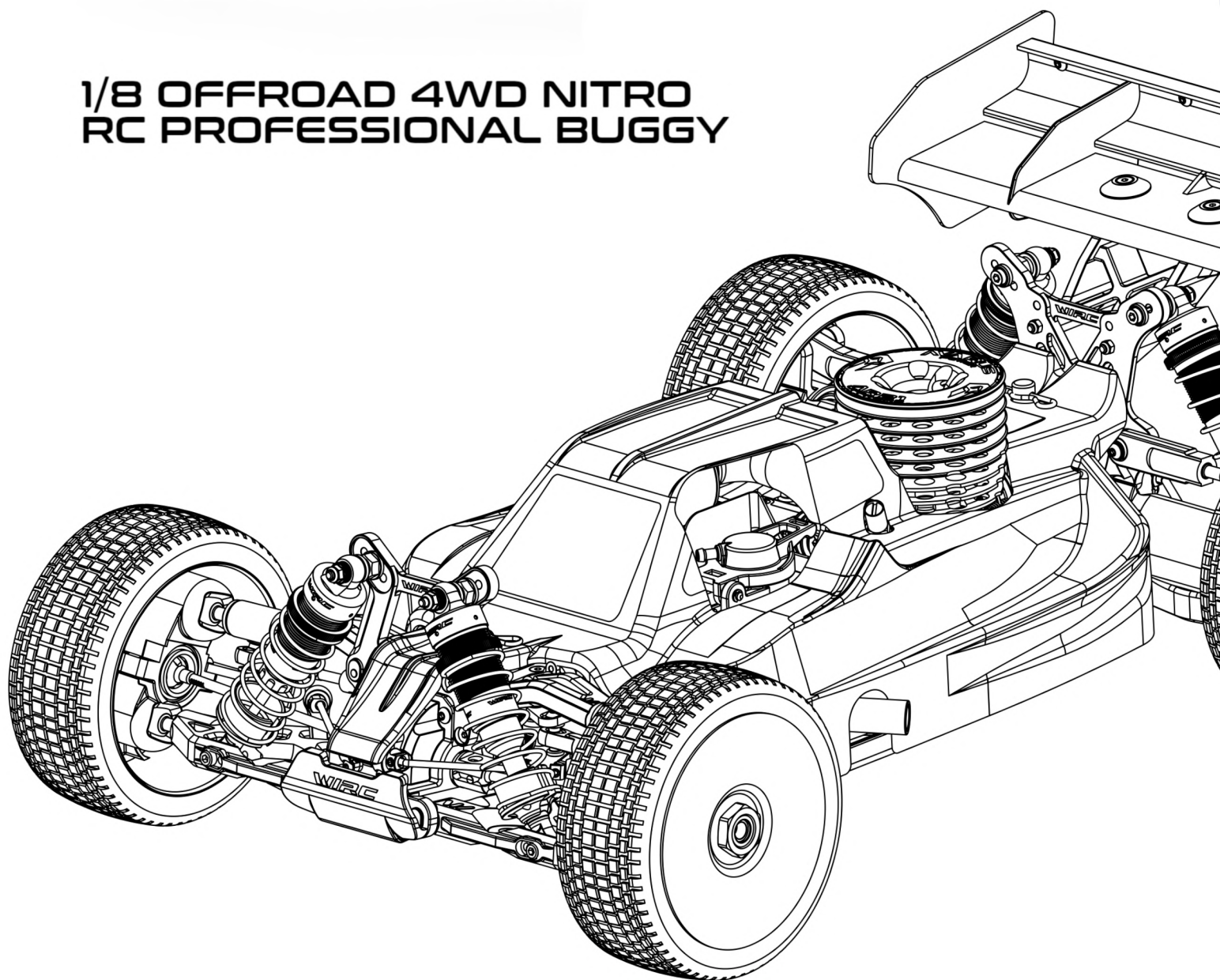


# **S3X4**

## **NEW GENERATION RC CAR**

**1/8 OFFROAD 4WD NITRO  
RC PROFESSIONAL BUGGY**



**INSTRUCTION MANUAL**

**WIRC**  
PROFESSIONAL RC CAR

[WWW.WIRCRCRACING.COM](http://WWW.WIRCRCRACING.COM)



## INTRODUCTION

SBX is a new generation high quality 1/8 scale nitro off-road buggy.  
SBX is supplied in a box, you can download the Instruction manual from [www.wircracing.com](http://www.wircracing.com)  
Its use is intended for more than 16 years old persons with experience on rc model car field.  
Children and all the persons without this requirement MUST have direct supervision of a knowledgeable adult responsible.

## SAFETY PRECAUTIONS

Instruction Manual MUST be read and fully understood before to start building and operating functions.  
Always keep Instruction Manual in safety place, ready to be consulted for any reference you need.  
Use only original WRC spare parts.

## GENERAL INFORMATION

Assemble the kit only away from the reach of children.  
Follow the building and operating instructions using the utmost care.  
Don't put any part of your body inside rotating and moving elements as this may cause damage or serious injury.  
Check and clean the model before putting it away.  
Don't use your model car in public places or in roads and areas where it could generate conflict with person or vehicular traffic.  
The model car is controlled by radio: you MUST put great care to avoid loss of radio control always keeping a safety margin all around your model in order to prevent any collision.  
Operating frequency: check and be sure it is clear and not shared with anybody at same time; it could cause loss of control of the RC model.  
Always turn on your transmitter before you turn on the receiver in the car and always turn off the receiver before you turn off your transmitter.  
Keep the wheels of the model off the ground when checking the operation of the radio equipment.  
Disconnect the battery pack before storing your model.

## WARRANTY

WIRC guarantees this model kit to be free from defects in both material and workmanship within 30 days of purchase.  
The total monetary value under warranty will in no case exceed the cost of the original kit purchased.  
This warranty doesn't cover any components damaged by use or modification or as result of wear.  
Part or parts missing from this kit must be reported within 30 days of purchase.  
No part or parts will be sent under warranty without proof of purchase.  
If you find a defective or missing part, contact the local distributor.  
Customer service and support will be provided through local hobby store.  
No warranties are expressed or implied that cover damage caused by what is considered normal use or cover or imply how long any model cars' components or electric components will last before requiring replacement.  
Due to the high performance level of this model car you will need to periodically maintain and replace consumable components; any and all warranty coverage will not cover replacement of any part or component damaged by neglect, abuse or improper or unreasonable use.  
This includes but is not limited to damage from crashing, excessive moisture, improper use or no maintenance or user modifications which compromise the integrity of components.  
Warranty will not cover components that are considered consumable on RC model car.  
WIRC doesn't pay nor refund on any component sent from WIRC or its distributor for warranty.  
WIRC reserves the right to make final determination of the warranty status of any component or part  
Use only original WIRC spare part:

## CUSTOMER SUPPORT

Please don't hesitate to contact WIRC support at [info@wircracing.com](mailto:info@wircracing.com) for any problem or question.  
Also kindly visit our website [www.wircracing.com](http://www.wircracing.com) to find last updates, set-up information, option parts and other information.

### World racing car s.r.l.

Via A.Volta 2 Bis  
36040 Brendola (VI)  
**ITALY**

Phone: 0039 0 444 1792263  
E-mail: [info@wircracing.com](mailto:info@wircracing.com)  
Website: [www.wircracing.com](http://www.wircracing.com)





## TECHNICAL INFORMATION

- BRAKE: Laser cut brake disc with Ferodo brake pad
- WHEELS LOCK: Lightweight 17 mm 7075 T6 Nut
- CHASSIS: 3.0 mm Swiss 7075 T6 aluminium
- RADIO PLATE: Composite Material
- DRIVETRAIN TYPE: Spring steel CVD Driveshafts
- FRONT DIFFERENTIAL: Differential Gear
- REAR DIFFERENTIAL: Differential Gear
- SUSPENSION: Pivot ball suspension
- RIDE HEIGHT: Adjustable Front & Rear
- CAMBER: Adjustable Front & Rear
- CASTER: Adjustable Front
- TOE: Adjustable Front & Rear
- ROLLCENTER: Adjustable Front & Rear
- ACKERMANN: Adjustable Front
- ANTI-ROLL BARS: Adjustable Front & Rear

- WIDTH: 310 mm
- WHEEL BASE: 315-320 mm

## ADDITIONAL ITEMS NEEDED FOR COMPLETION REQUIRED BUT NOT INCLUDED IN THE KIT



ENGINE AND MUFFLER



TRANSMITTER



RECEIVER



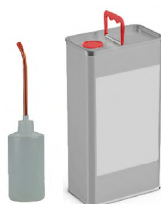
GLOW PLUG IGNITER



BATTERIES FOR TRANSMITTER  
AND RECEIVER



WHEELS, TYRES AND INSERTS



FUEL AND FUEL BOTTLE



STEERING AND THROTTLE SERVO



STARTER BOX

## TOOLS REQUIRED

THESE TOOLS ARE NOT INCLUDED IN THE KIT BUT ARE REQUIRED FOR PROPER ASSEMBLY



ALLEN:  
1.5mm, 2 mm, 2.5 mm, 3mm



SOCKET:  
5.5mm



SIDE CUTTERS



COMBINATION PLIERS



TURNBUCKLES, NUTS TOOL



WHEEL NUT TOOL  
17mm



HOLE REAMER



GREASE



OILS:  
5000 CST  
BEARING OIL

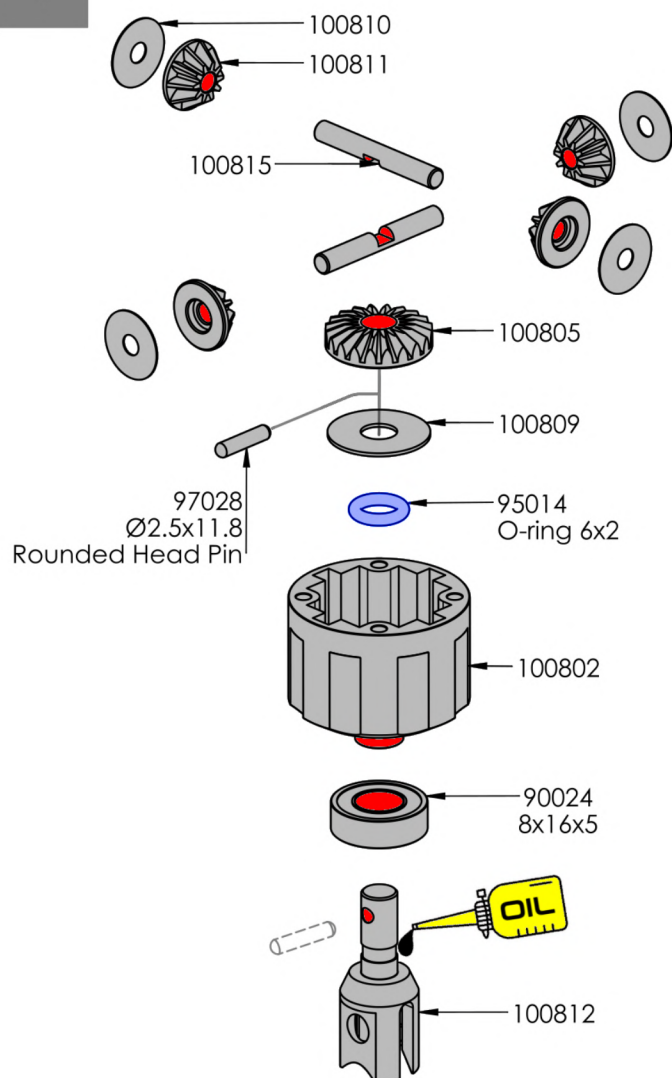
## NOTICE:

THESE ITEMS ARE NEEDED FOR COMPLETION OF THE SBX, THEY ARE NOT INCLUDED IN THIS KIT (UNLESS NOTED) AND SHOULD BE OBTAINED FROM YOUR LOCAL HOBBY SHOP.

BE SURE TO READ THE INSTRUCTION COMPLETELY PRIOR TO ASSEMBLY.



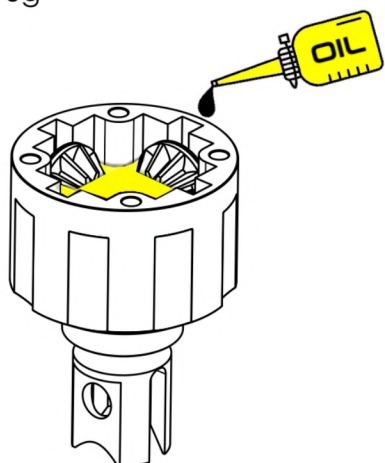
1



2

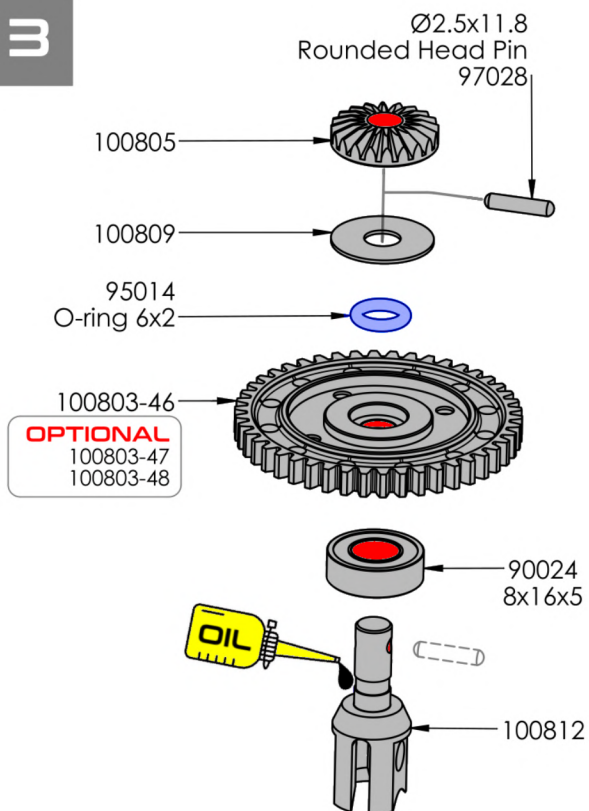
### DIFFERENTIAL OIL :

Type: 5000 cst  
Weight: 3g

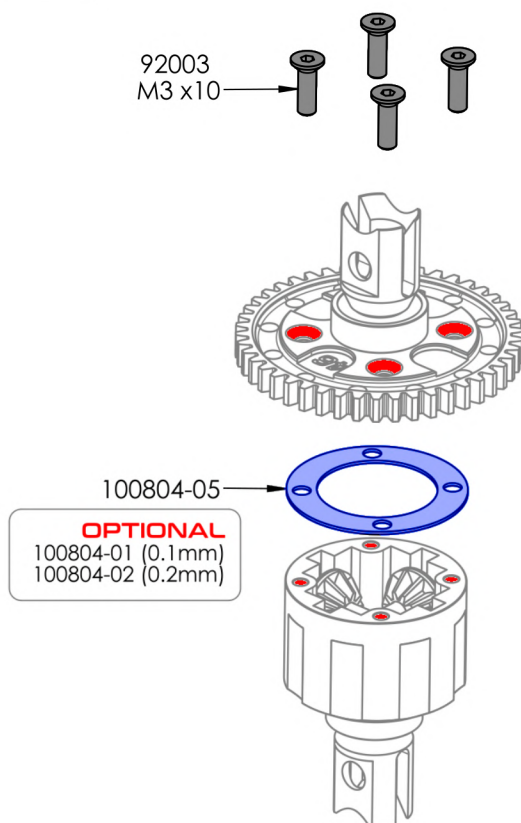


Fill the differential up to the top of the pin. **DO NOT** fill the diff. to the top of the housing.

3

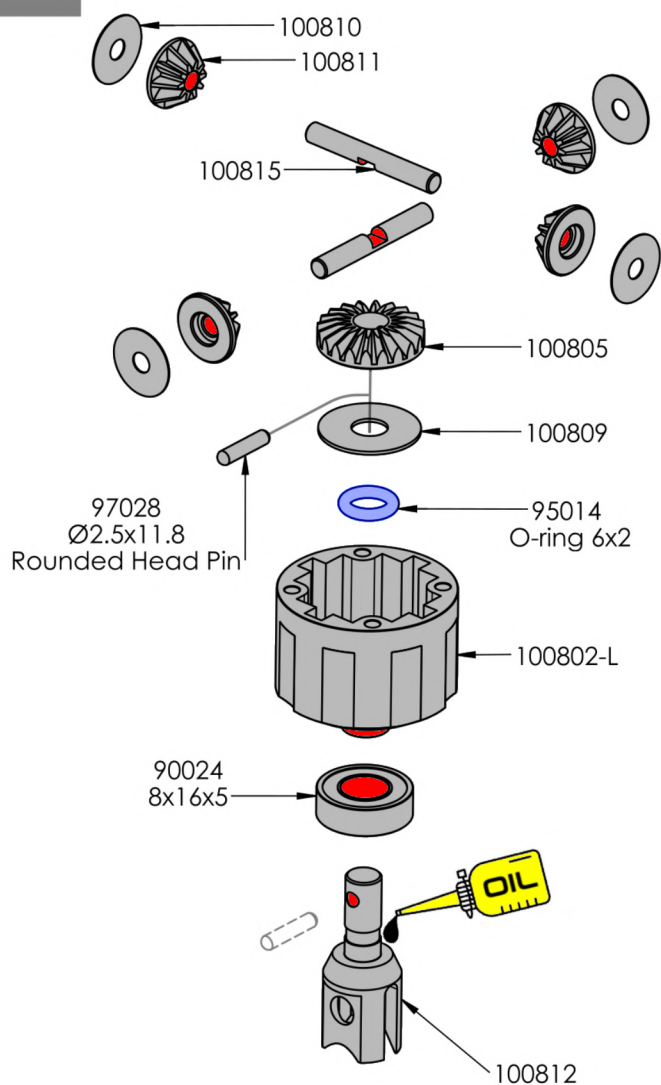


4





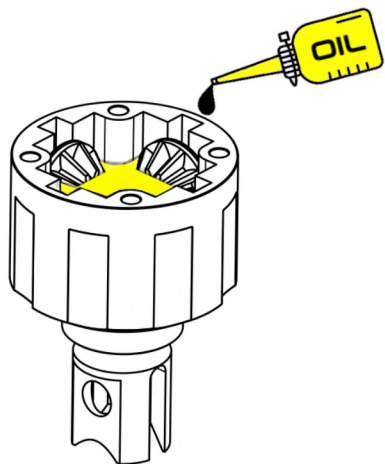
1



2

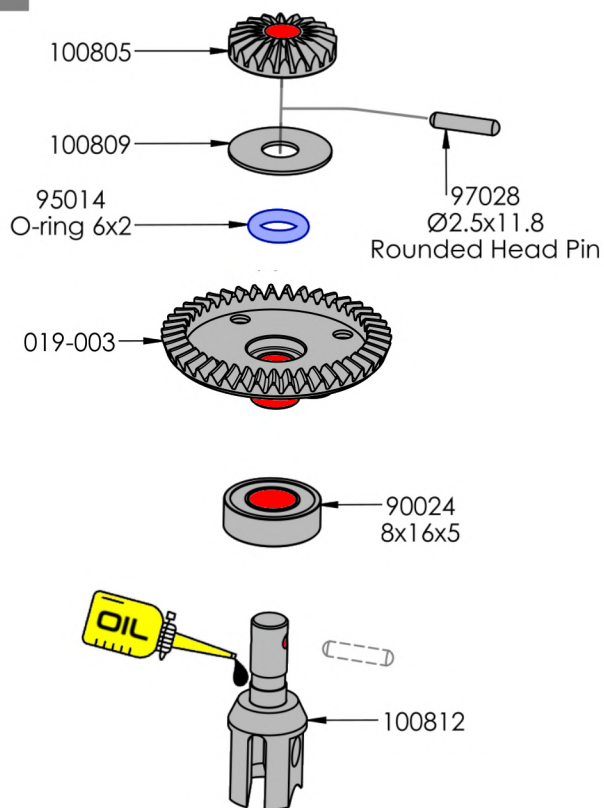
### DIFFERENTIAL OIL :

Type: 5000 cst  
Weight: 3g

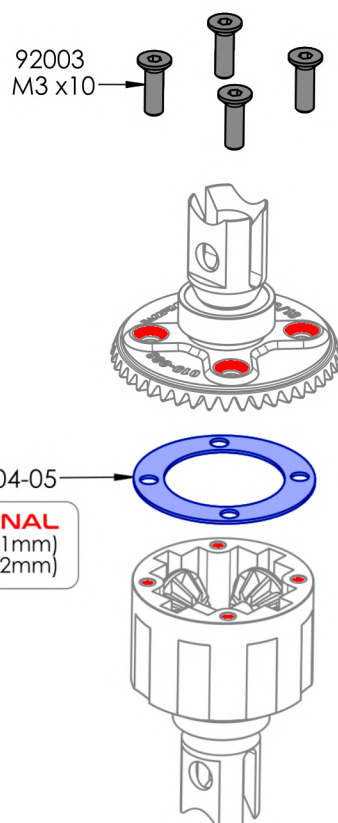


Fill the differential up to the top of the pin. **DO NOT** fill the diff. to the top of the housing.

3

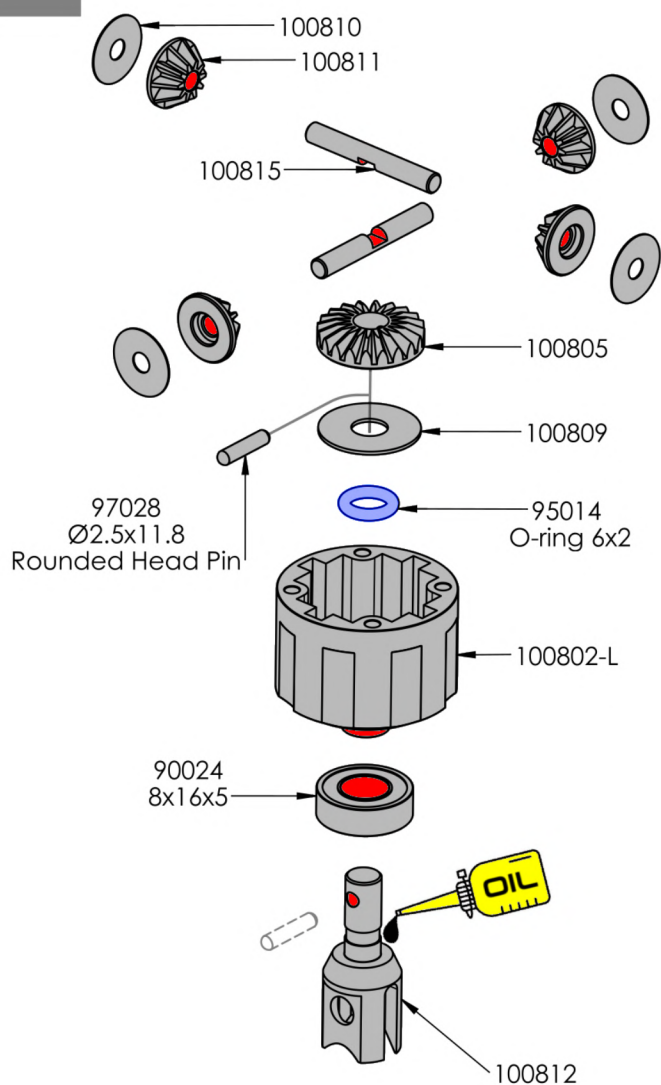


4



**OPTIONAL**  
100804-01 (0.1mm)  
100804-02 (0.2mm)

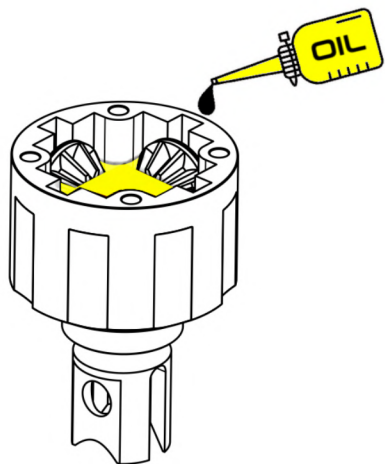
1



2

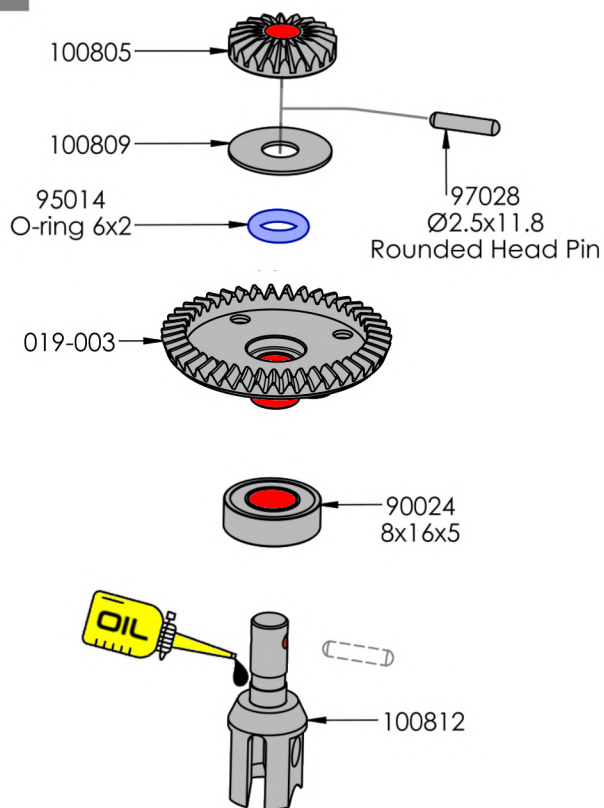
### DIFFERENTIAL OIL :

Type: 5000 cst  
Weight: 3g

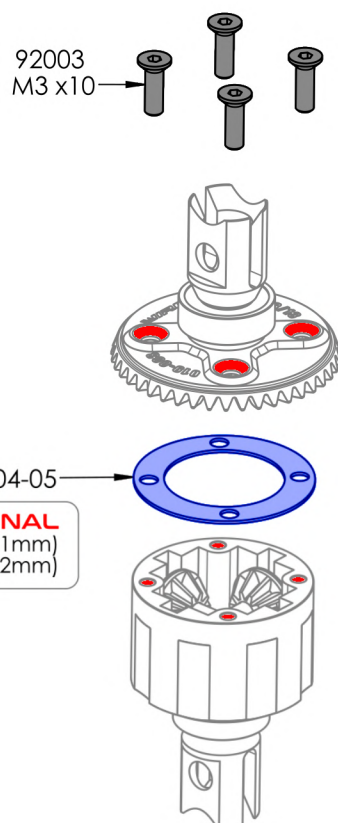


Fill the differential up to the top of the pin. **DO NOT** fill the diff. to the top of the housing.

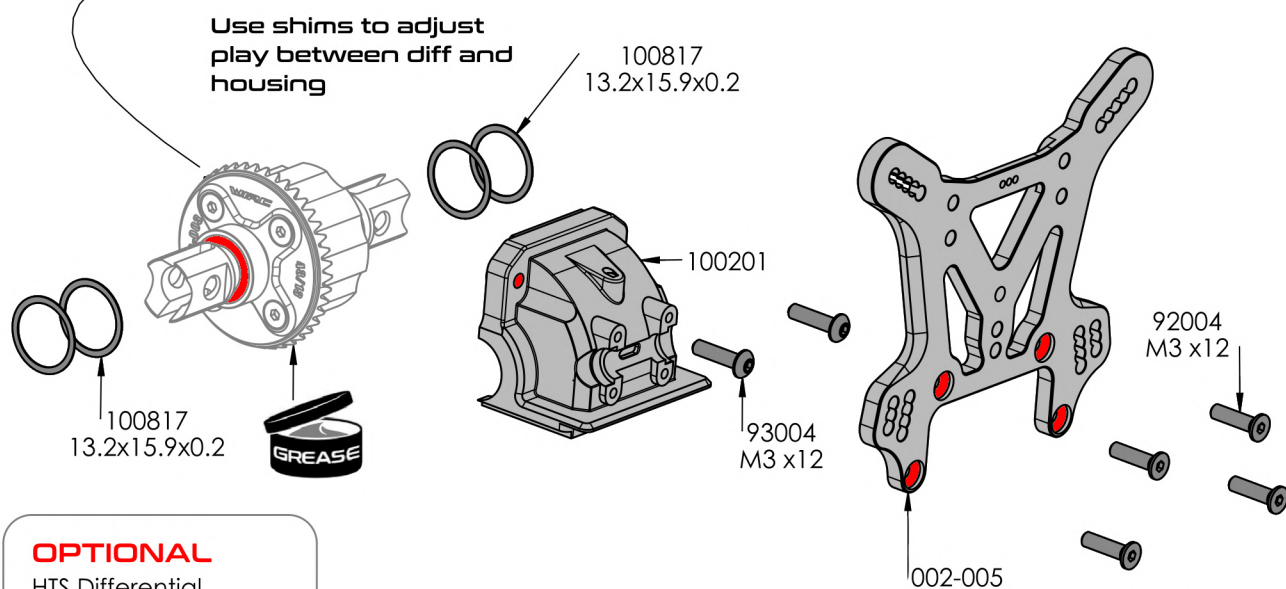
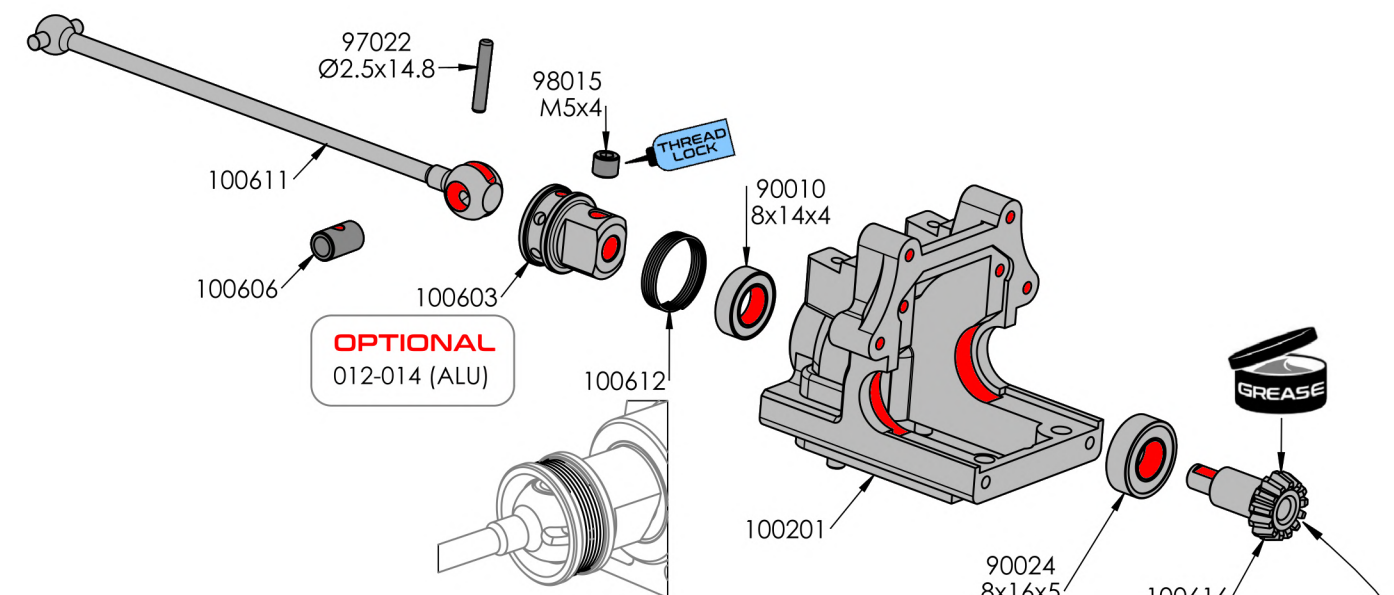
3



4



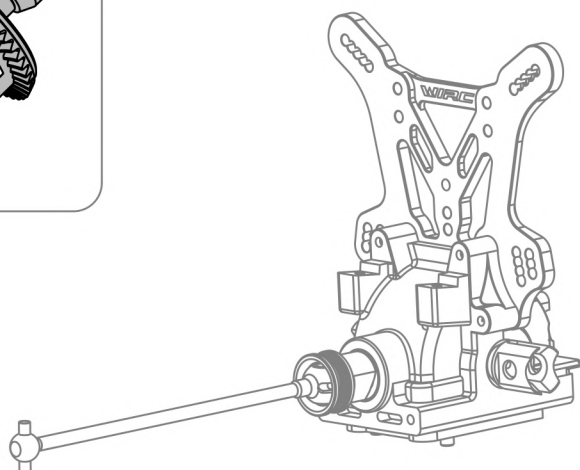
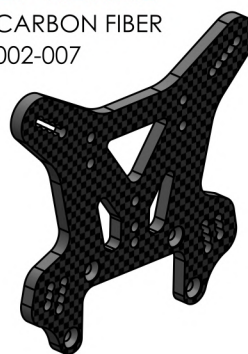
**OPTIONAL**  
100804-01 (0.1mm)  
100804-02 (0.2mm)



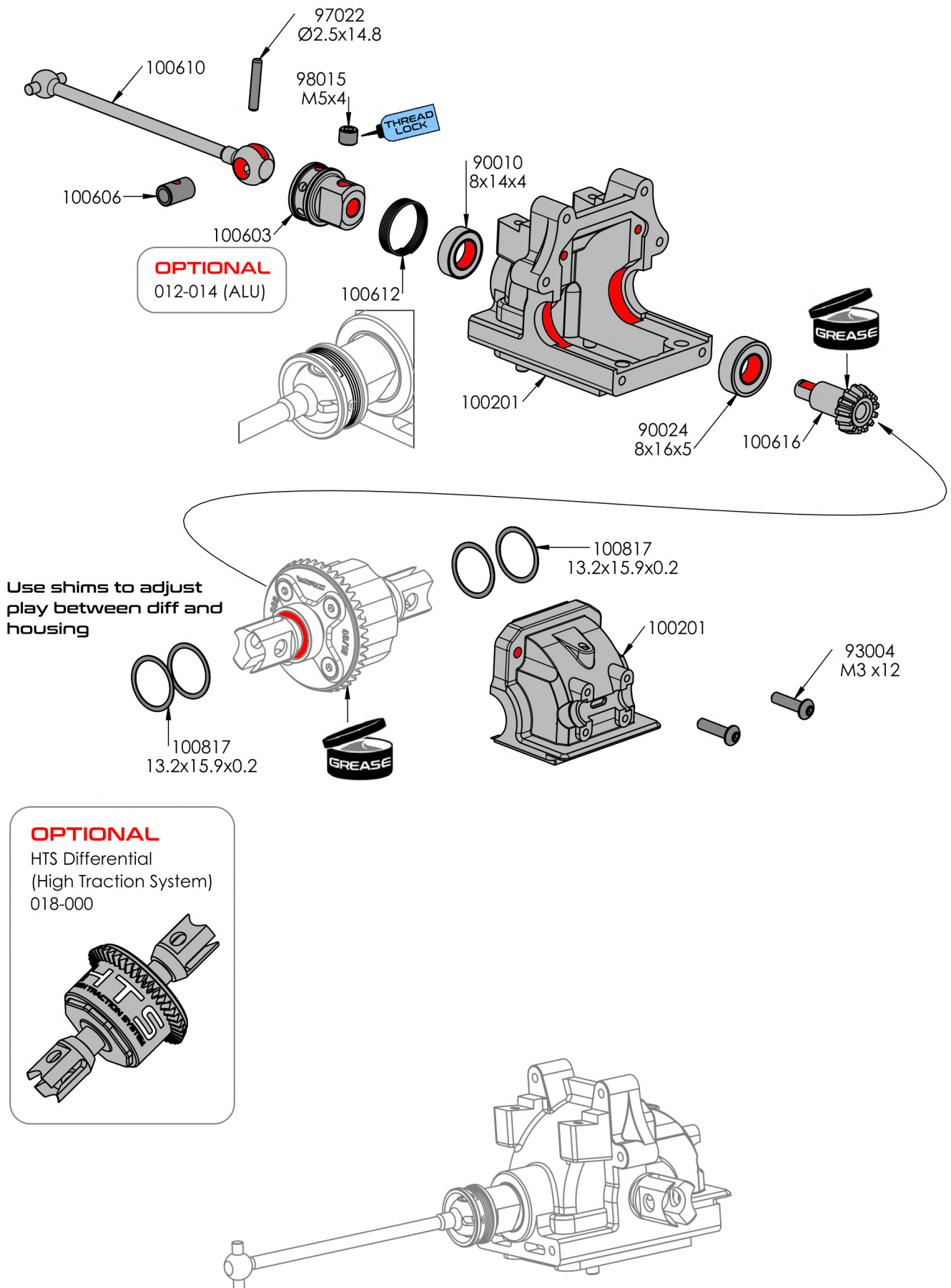
**OPTIONAL**  
HTS Differential  
(High Traction System)  
018-000

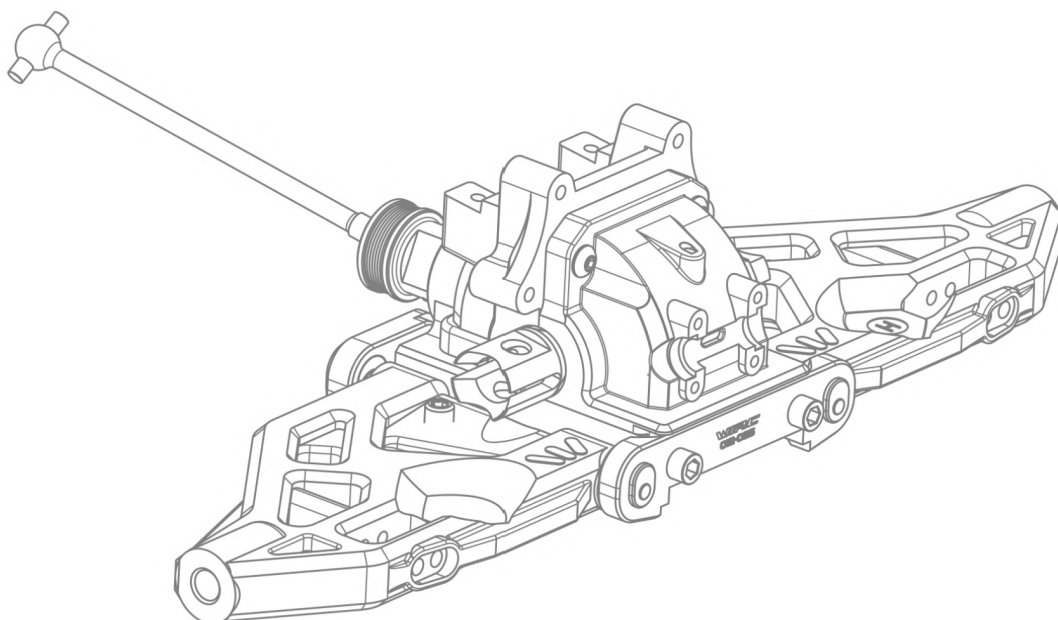
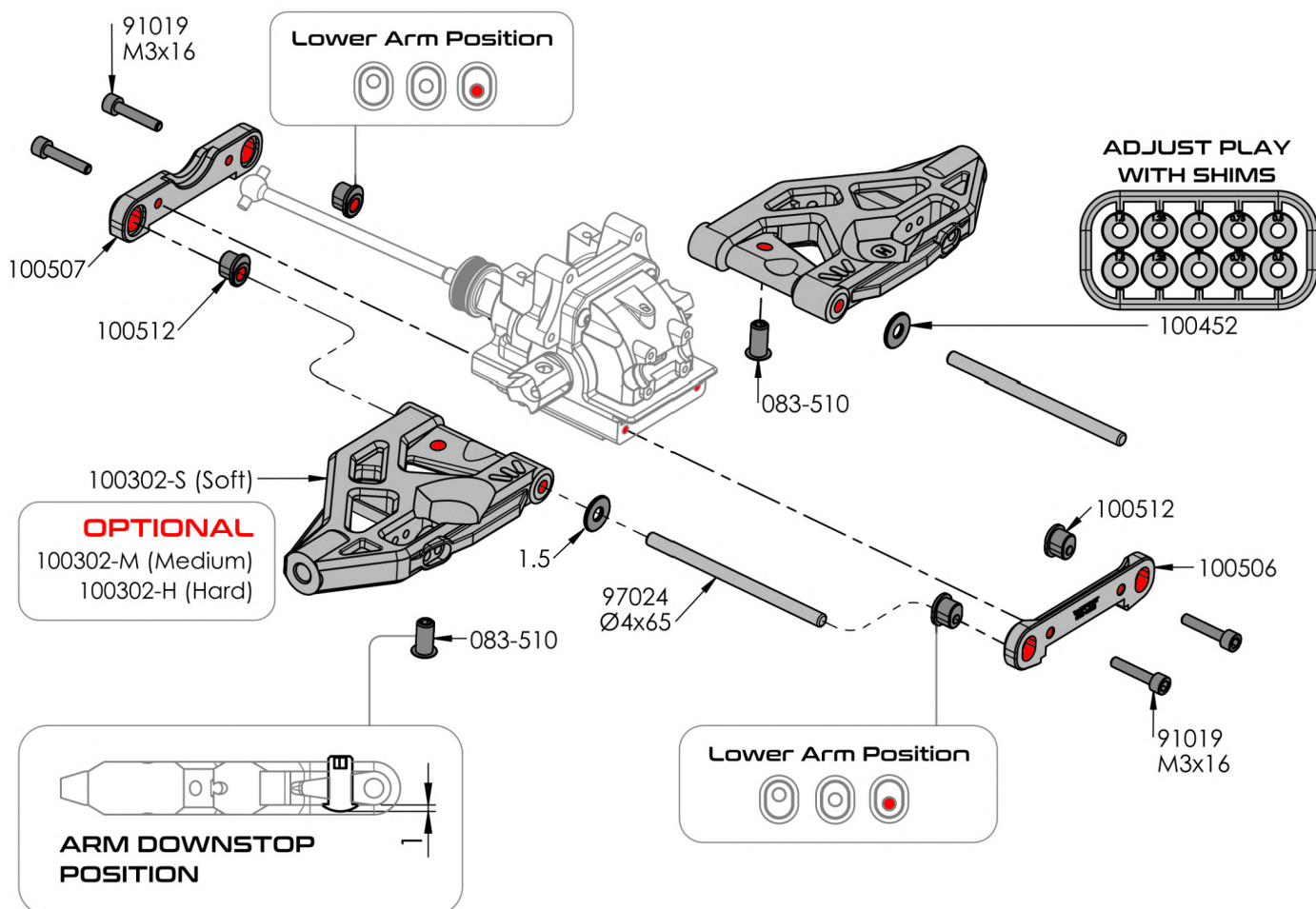


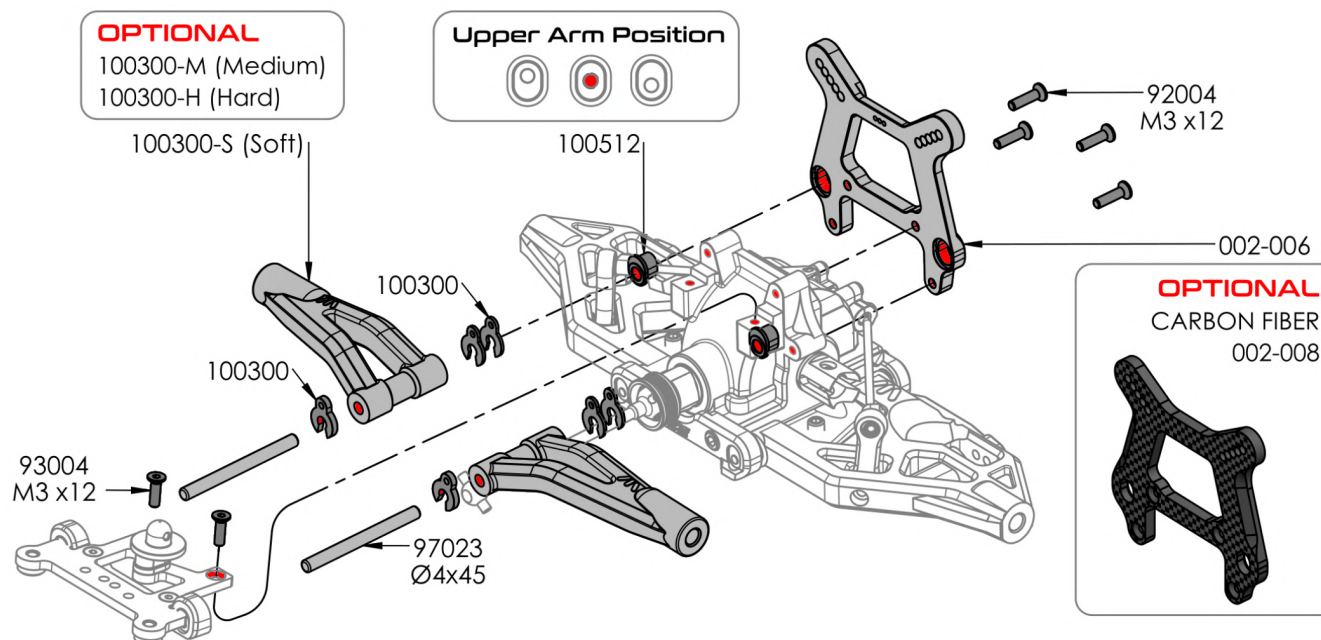
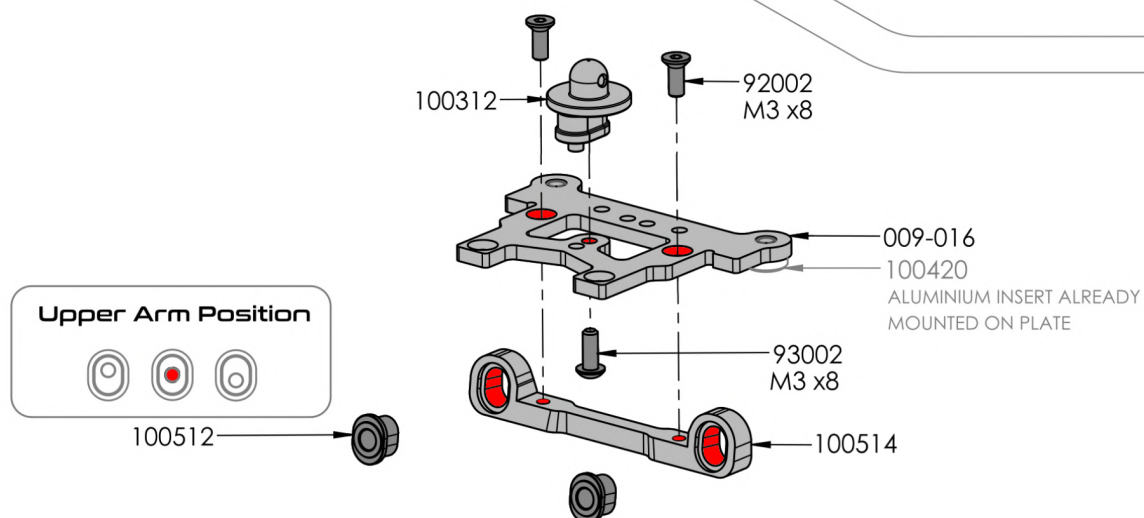
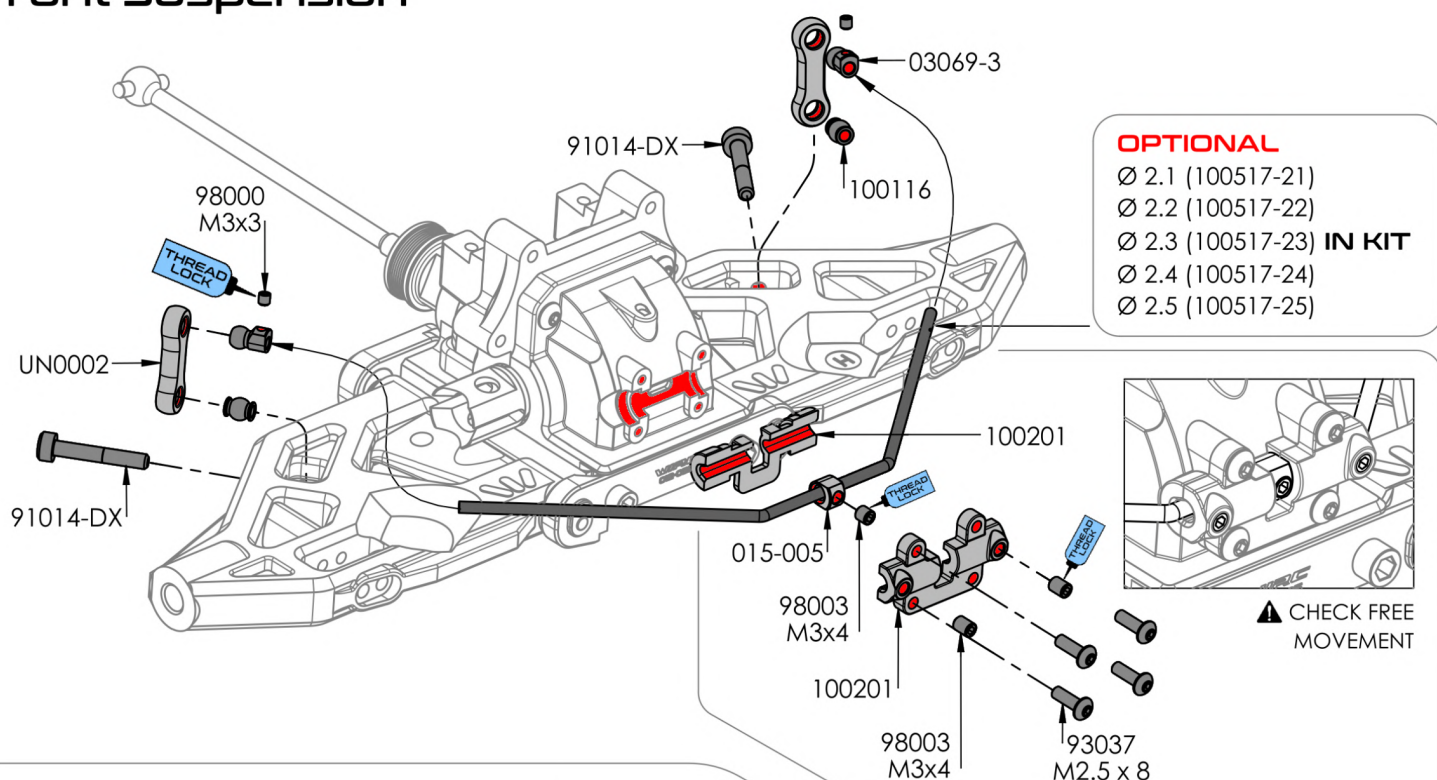
**OPTIONAL**  
CARBON FIBER  
002-007



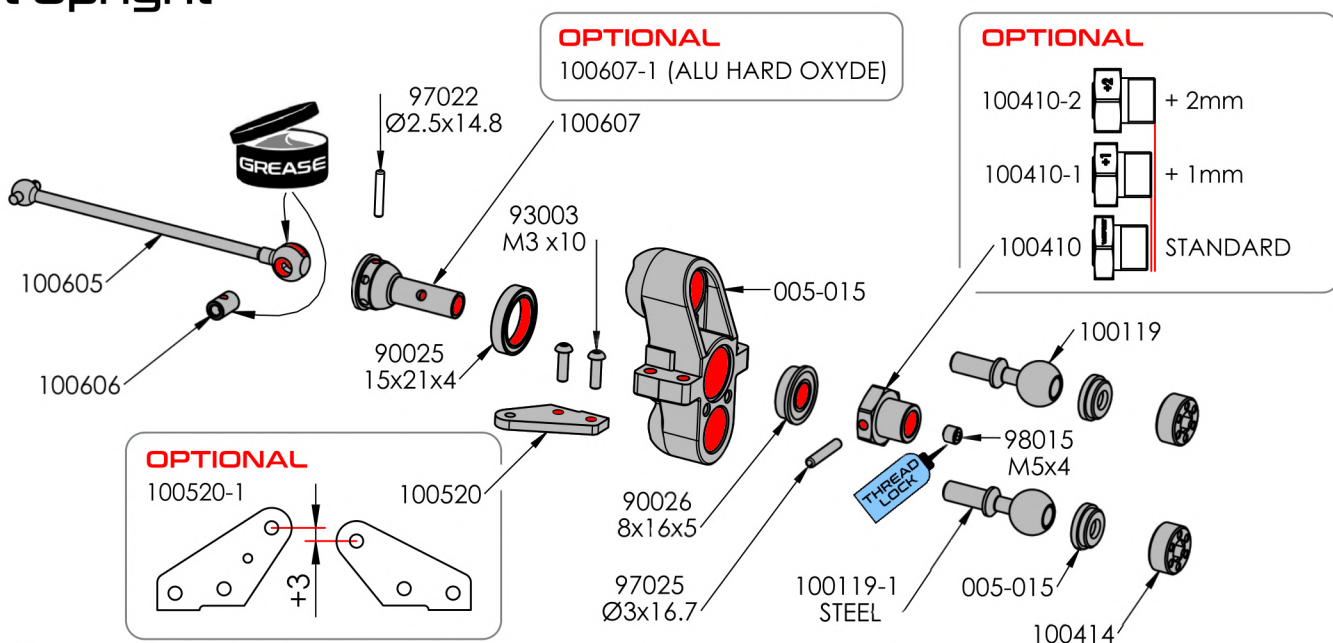






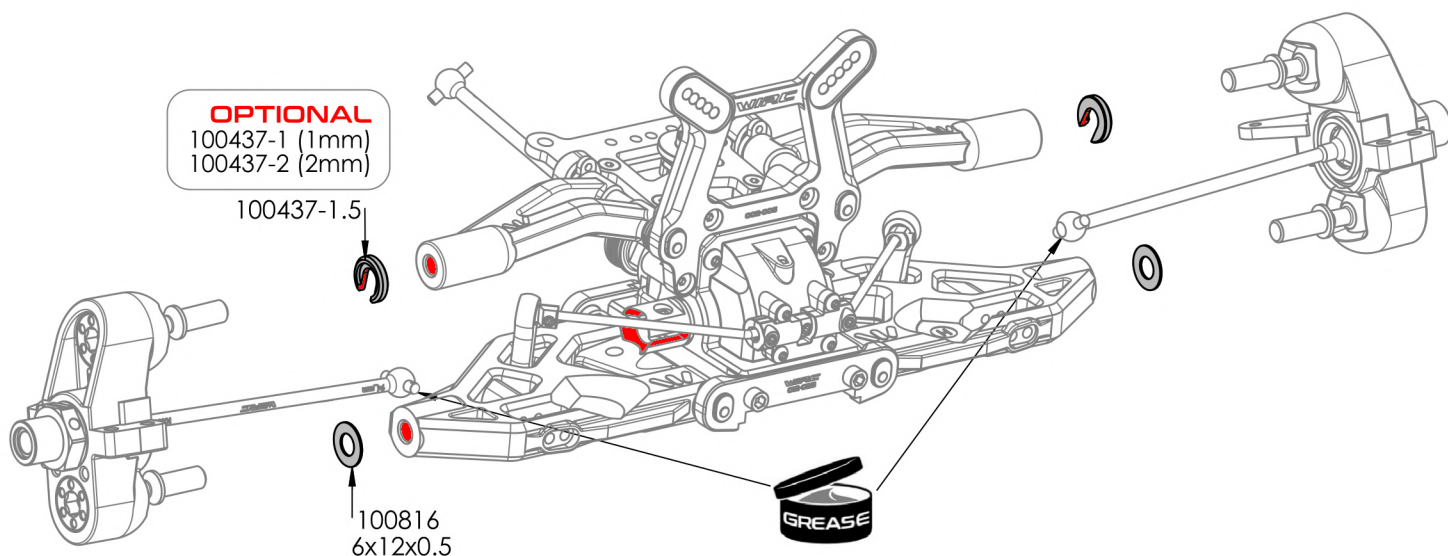
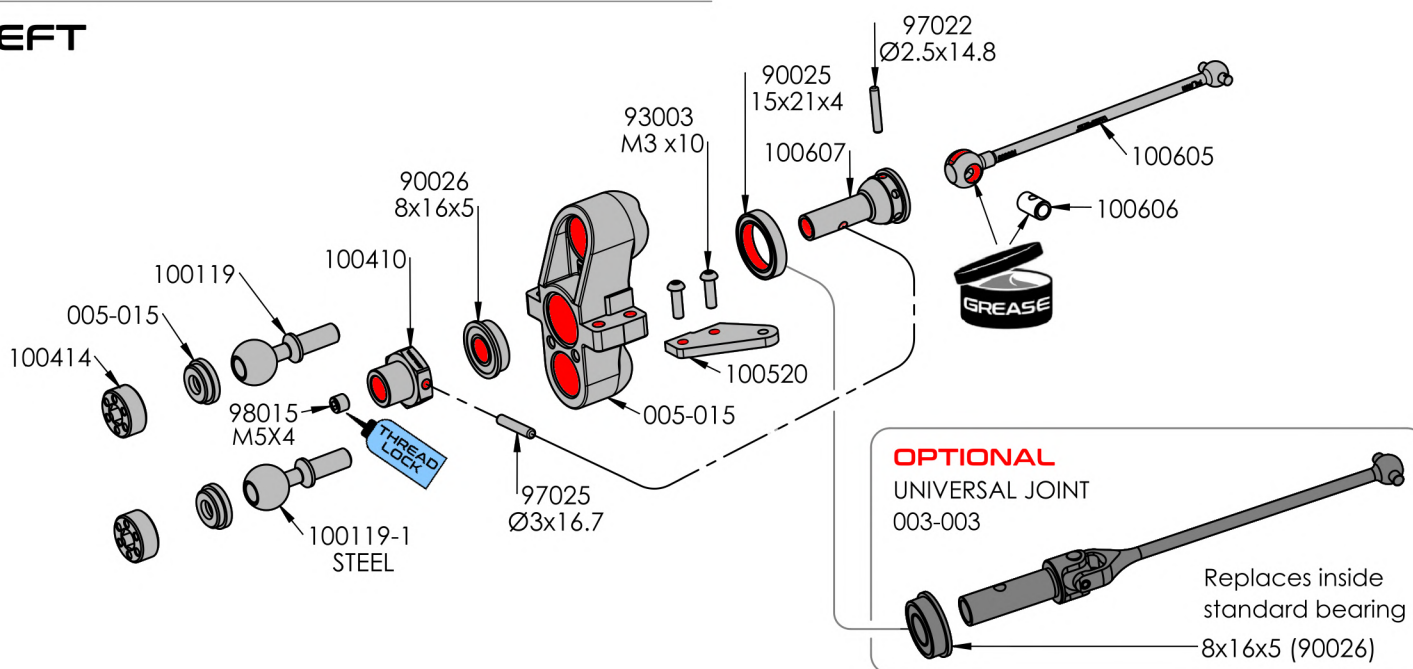


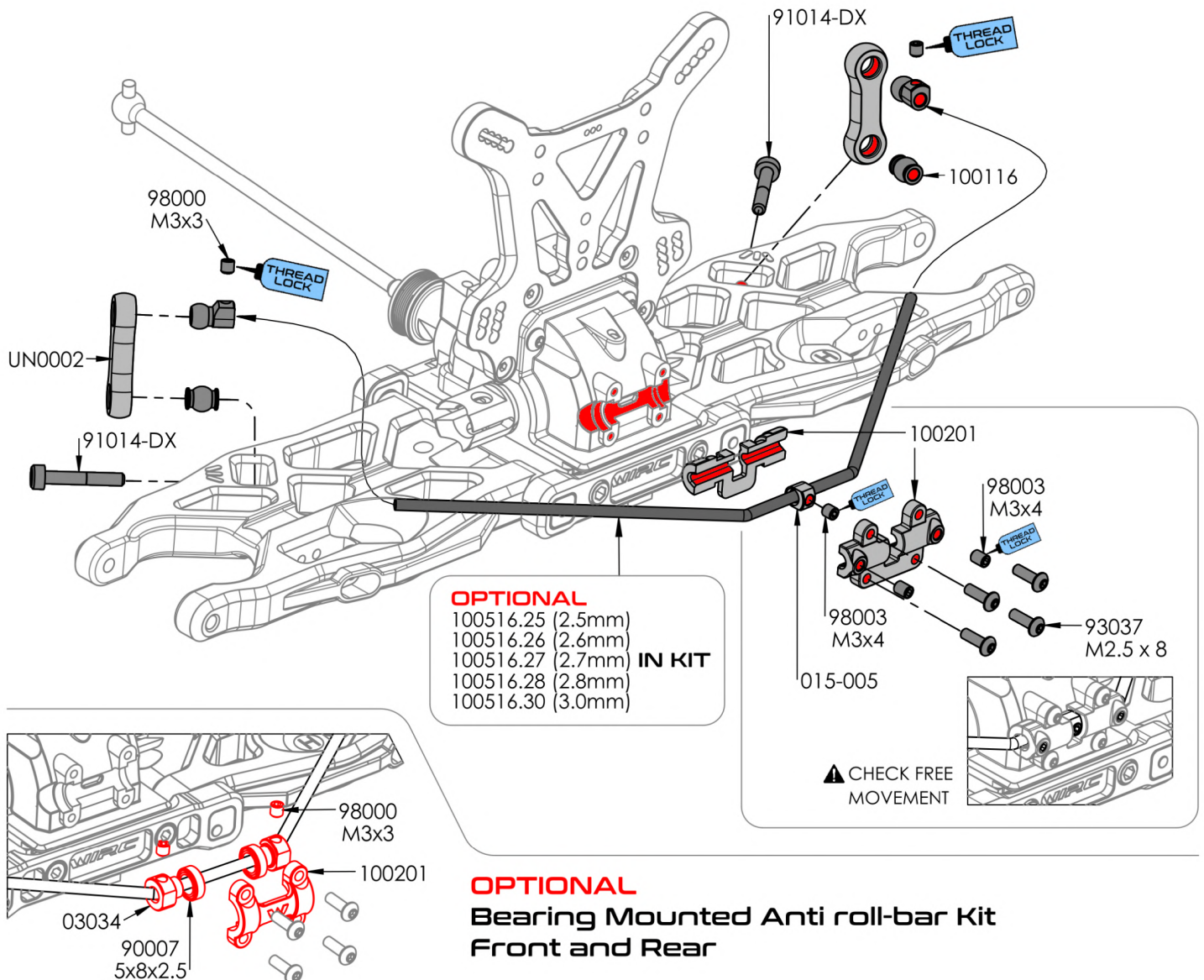
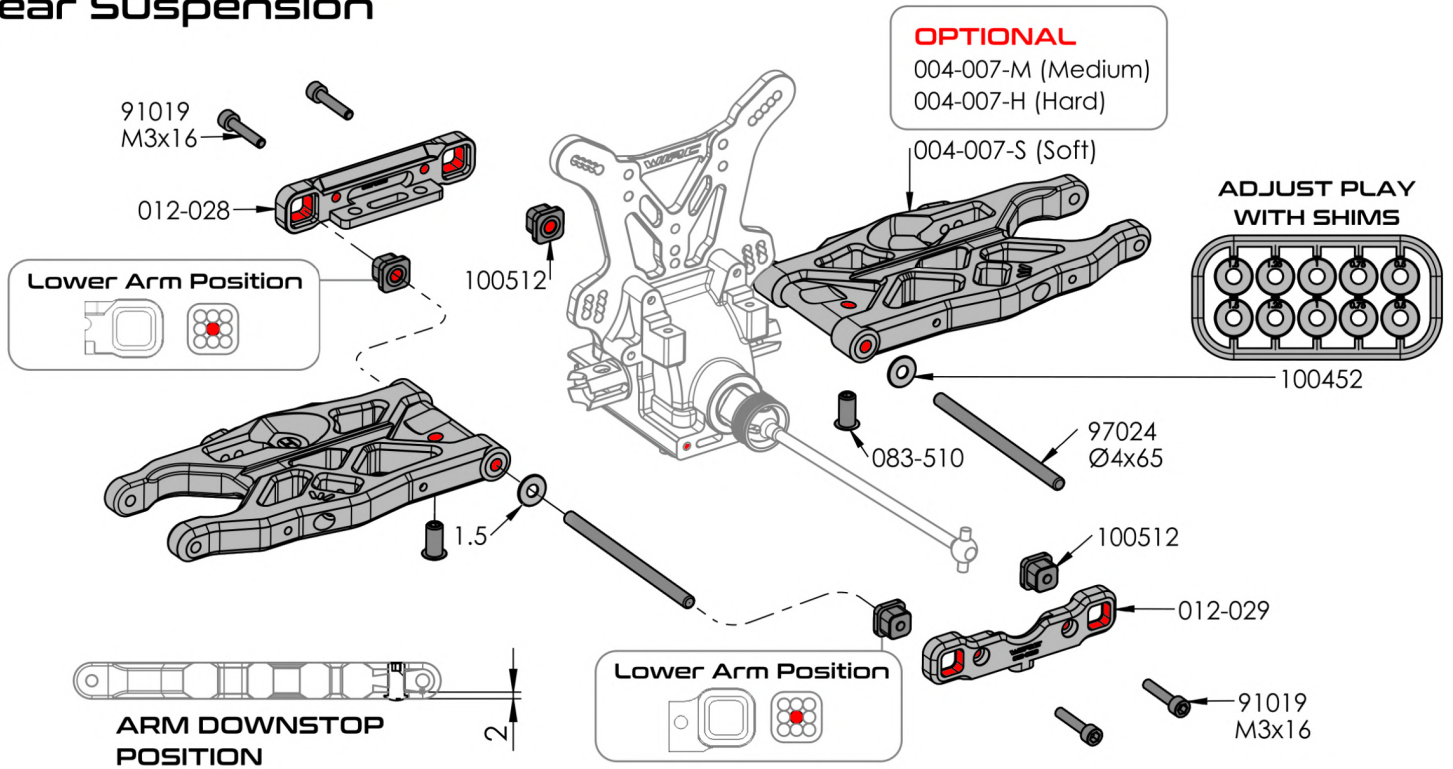




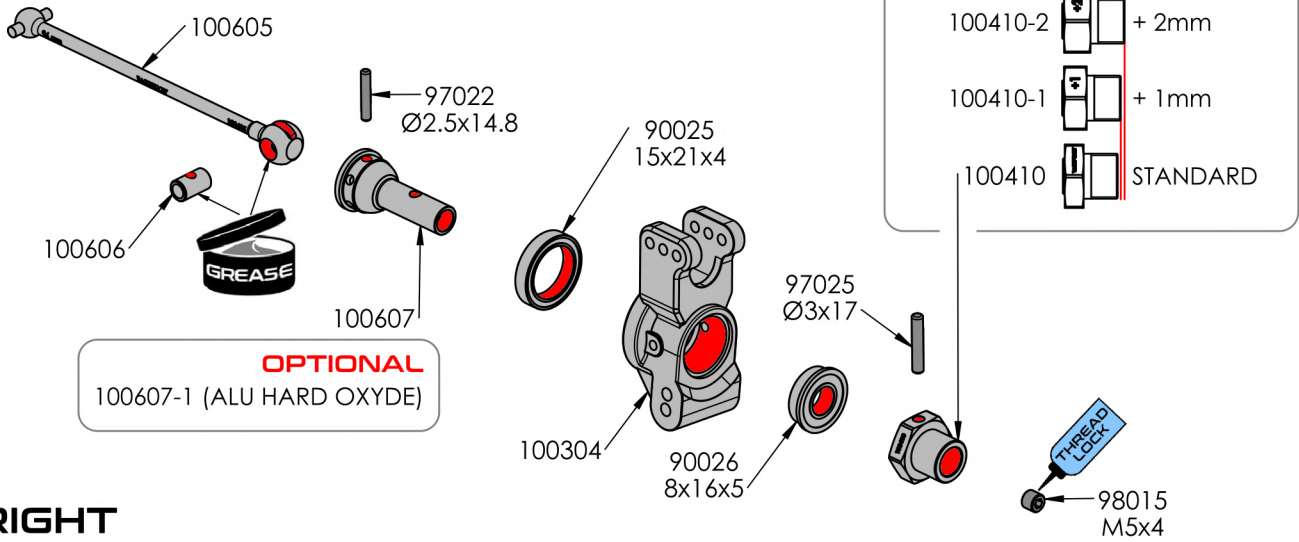
RIGHT

LEFT



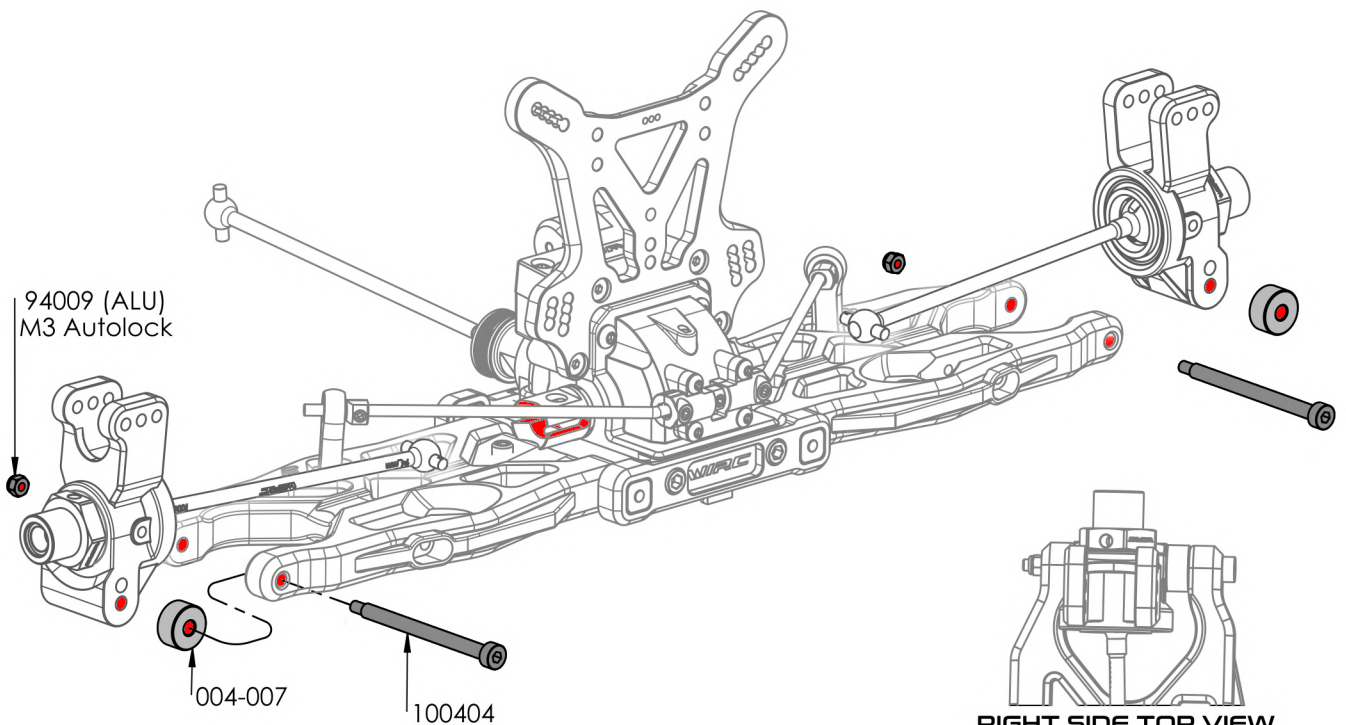
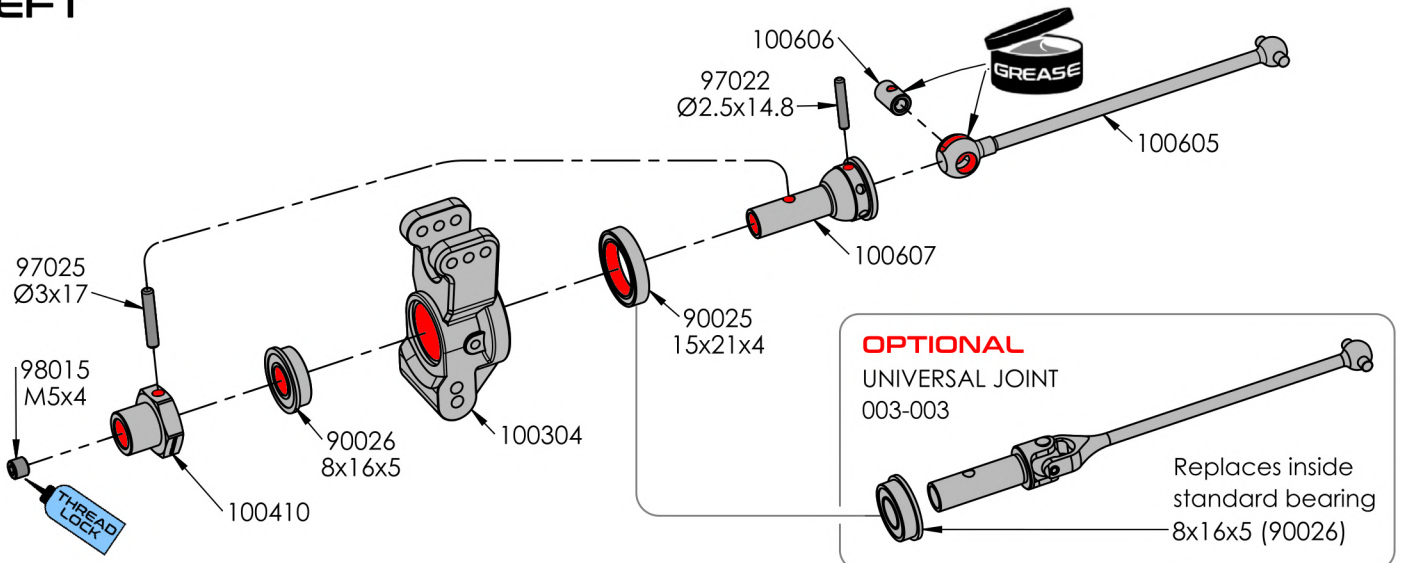






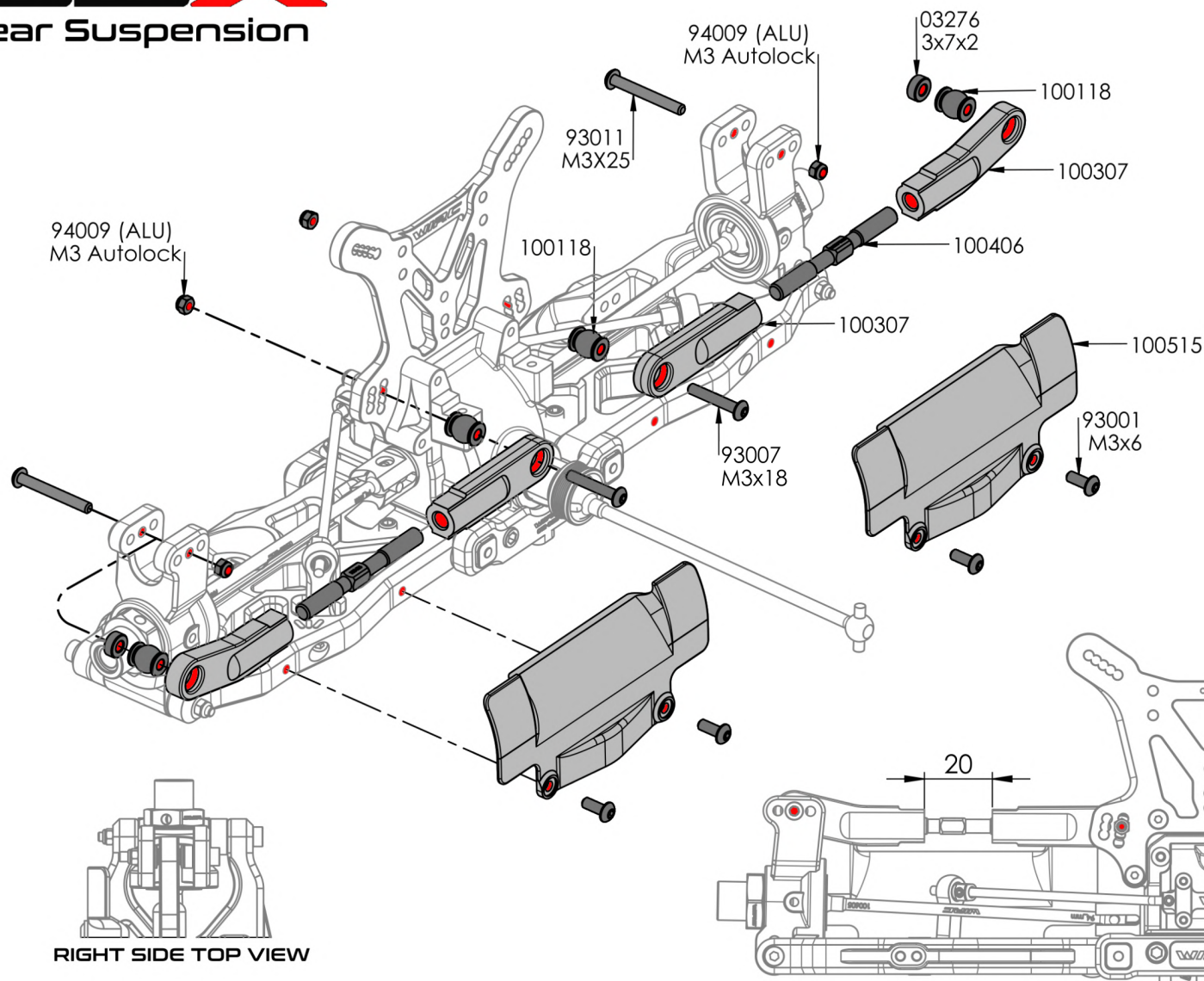
**RIGHT**

**LEFT**

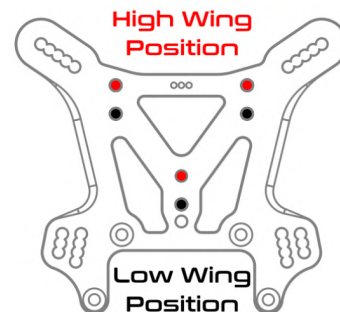
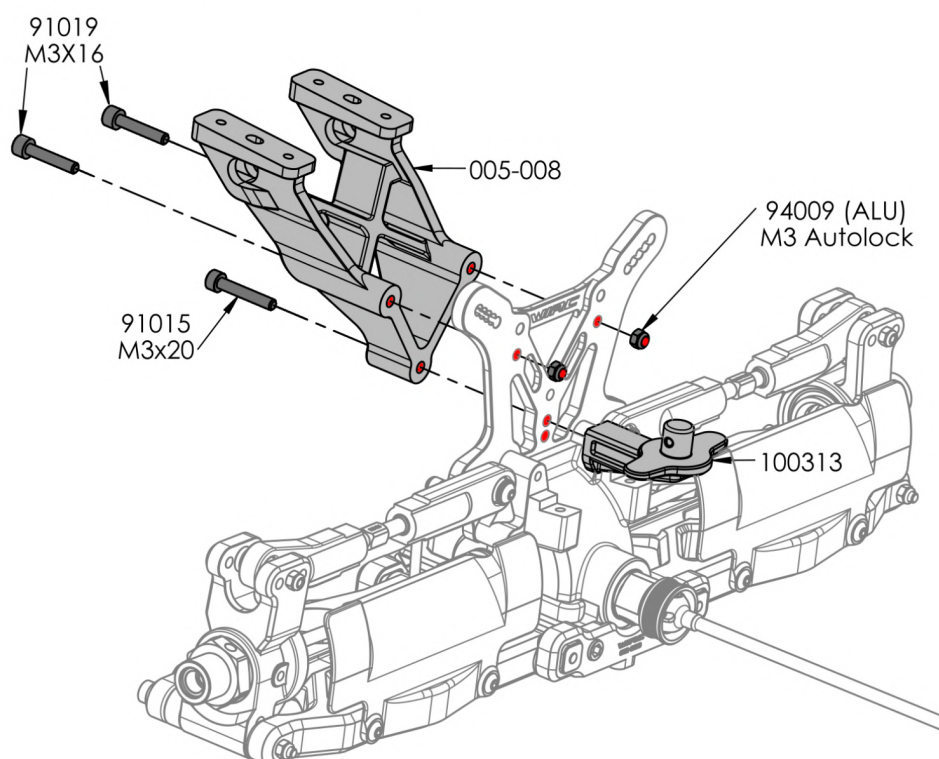


**RIGHT SIDE TOP VIEW**



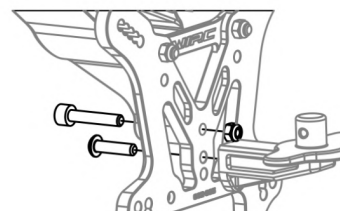


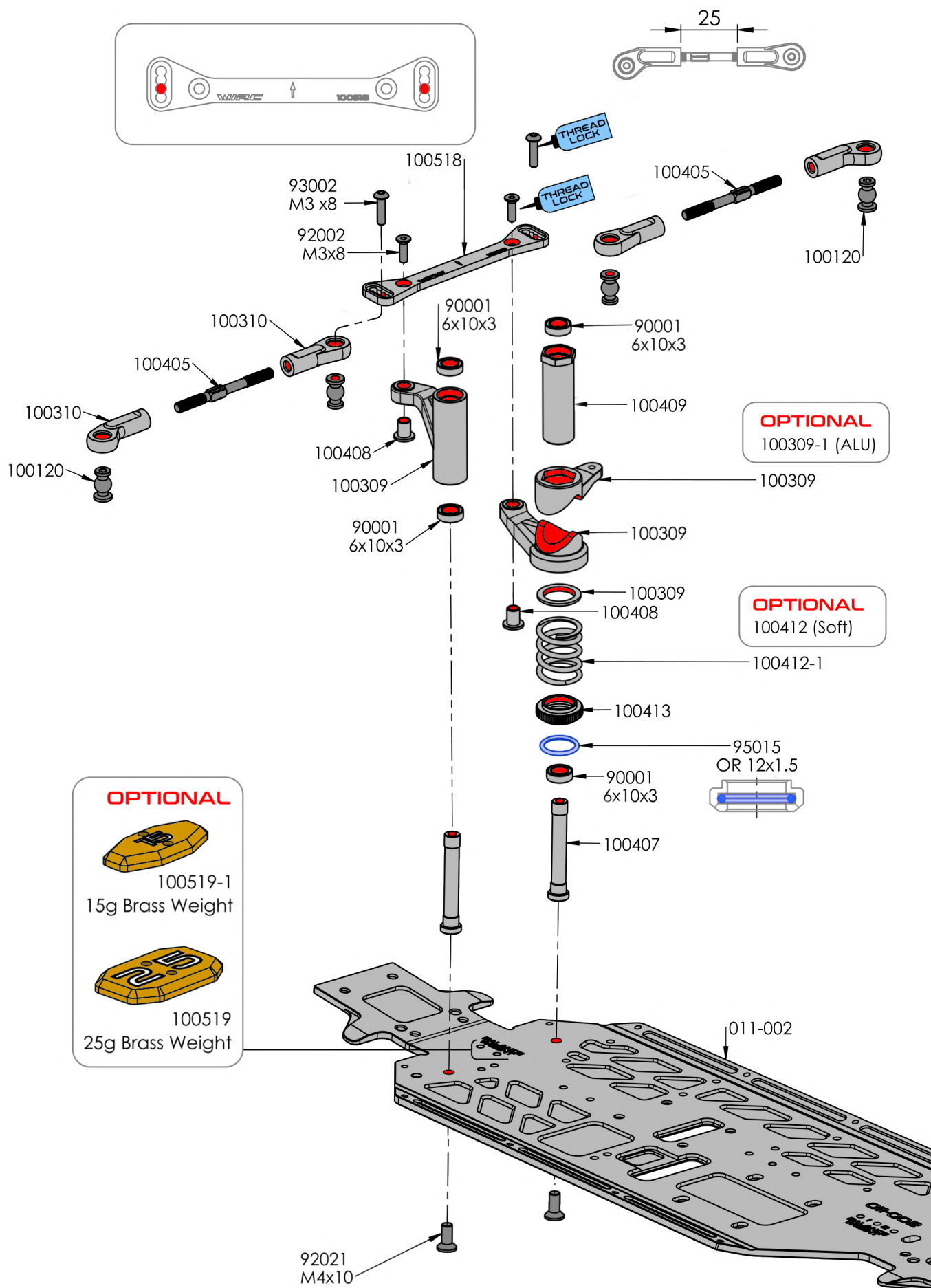
## Rear Wing Support



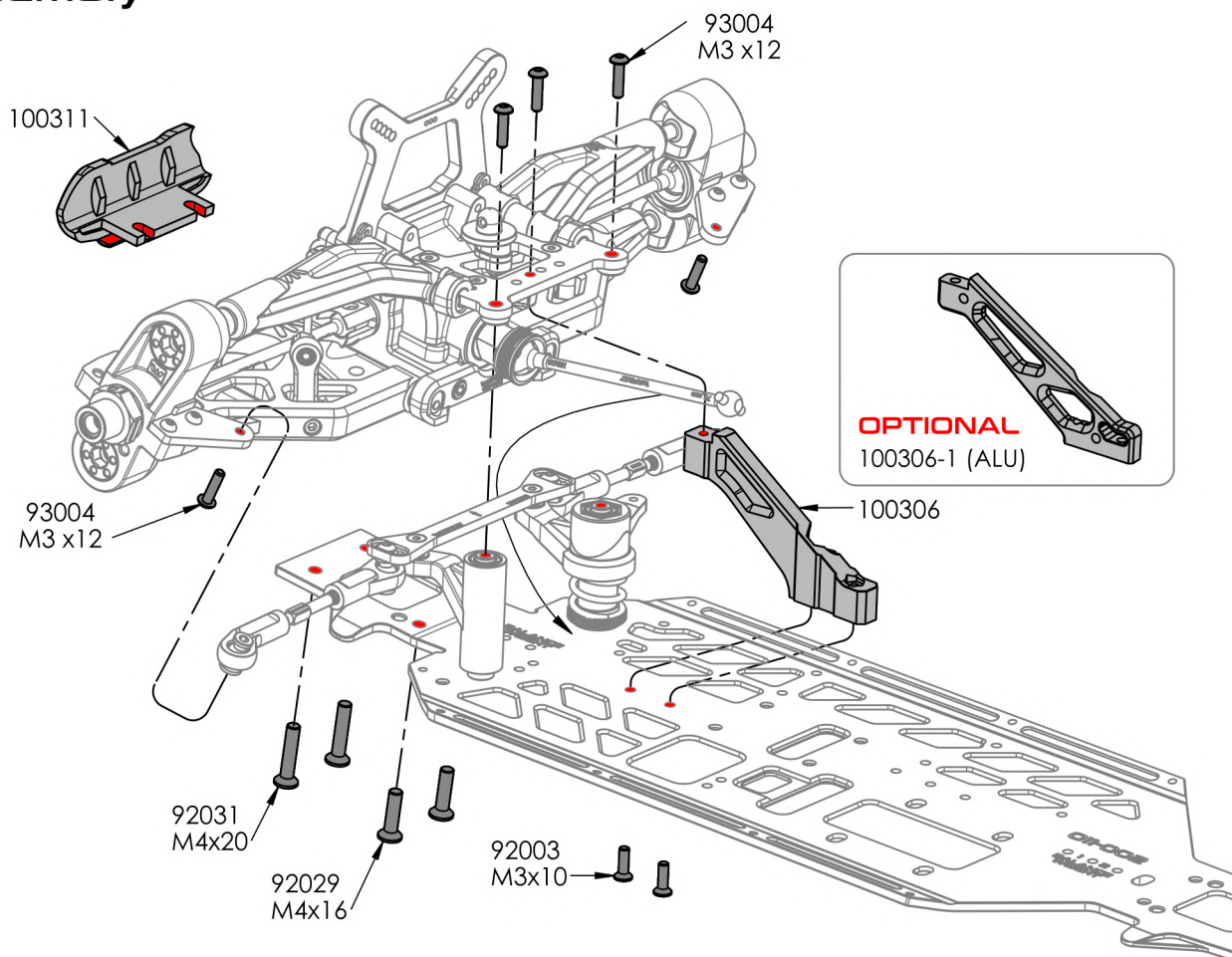
⚠ TO MOUNT THE WING ON HIGH POSITION THE FOLLOWING PARTS ARE NEEDED:

- 1x M3x16
- 1x M3 Autolock Nut
- 1x M3x12

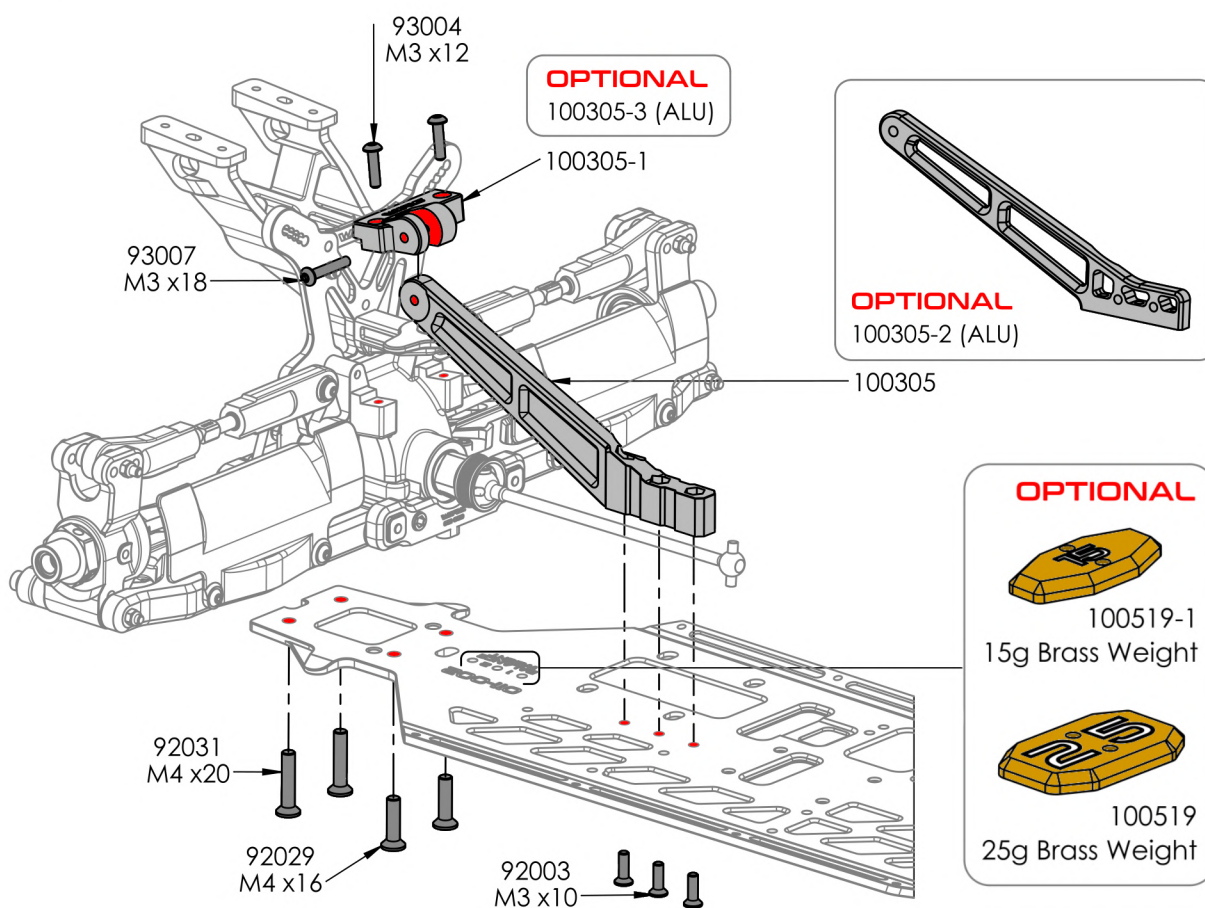




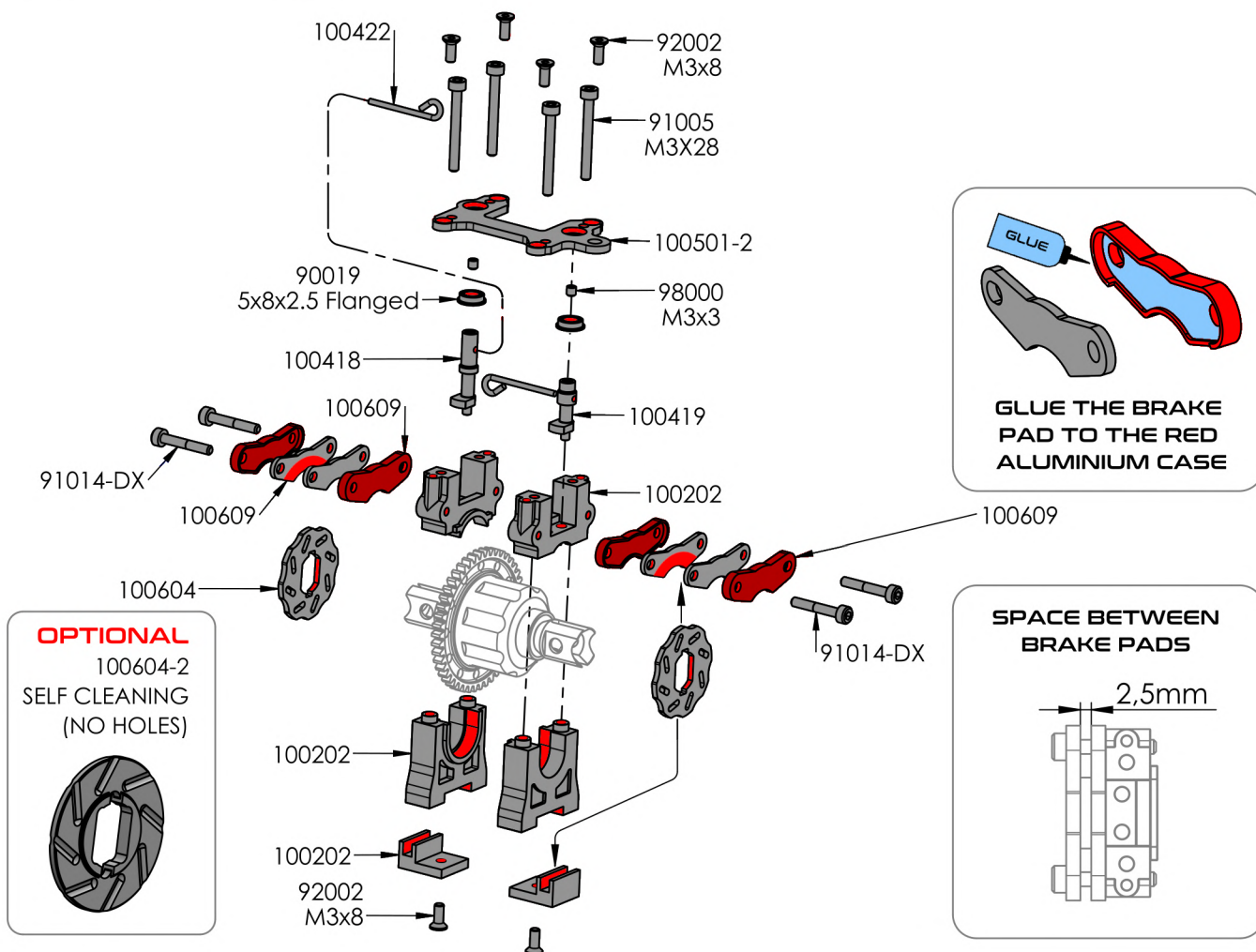




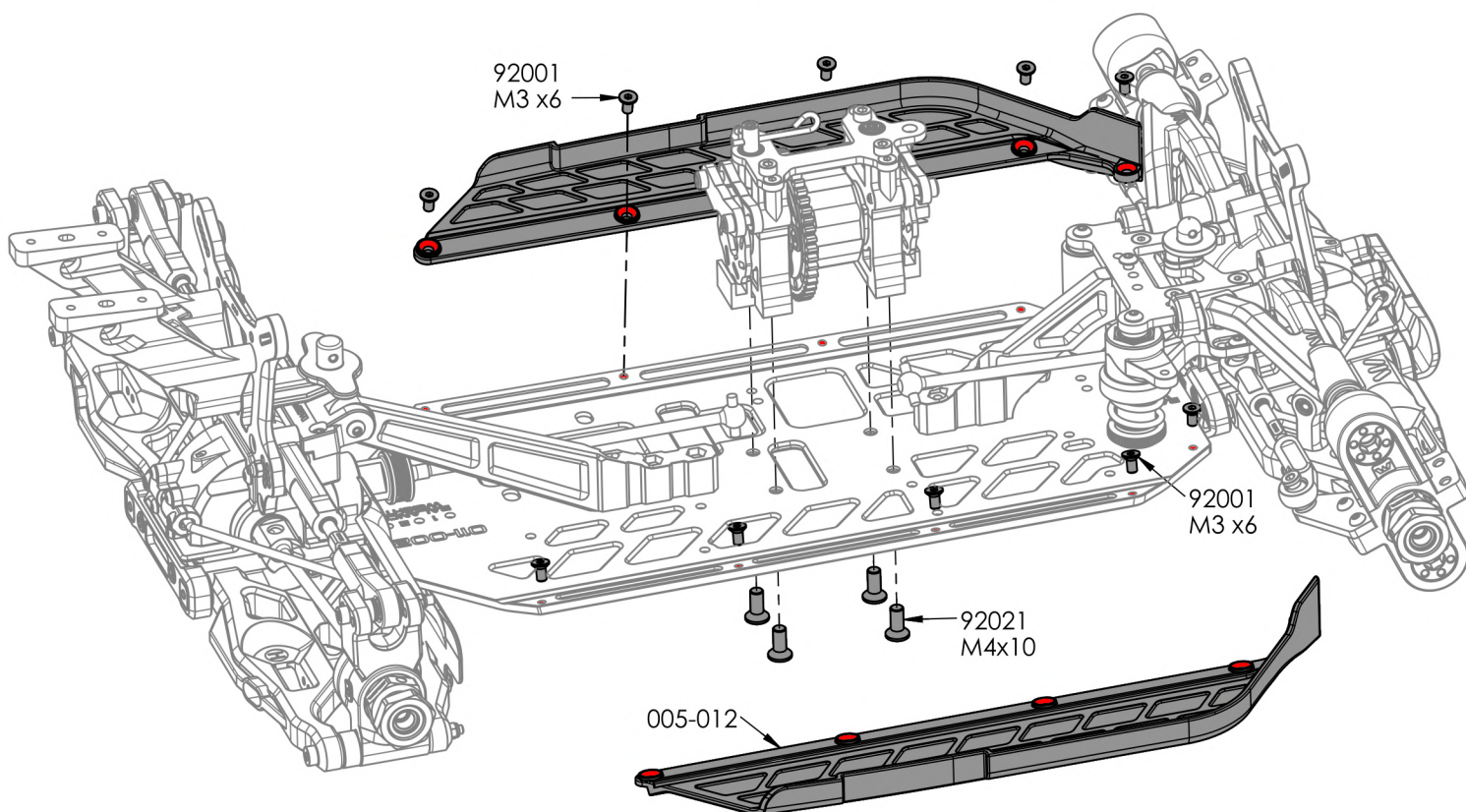
## Rear Assembly



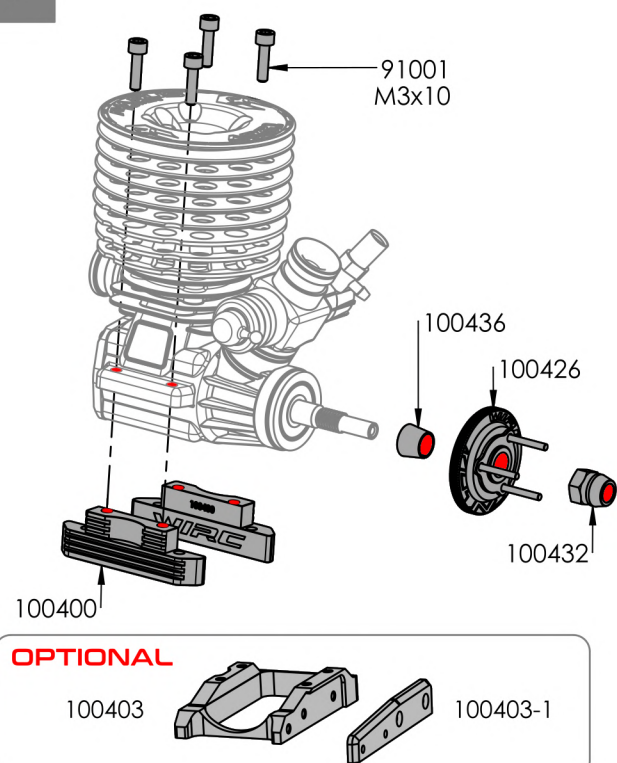




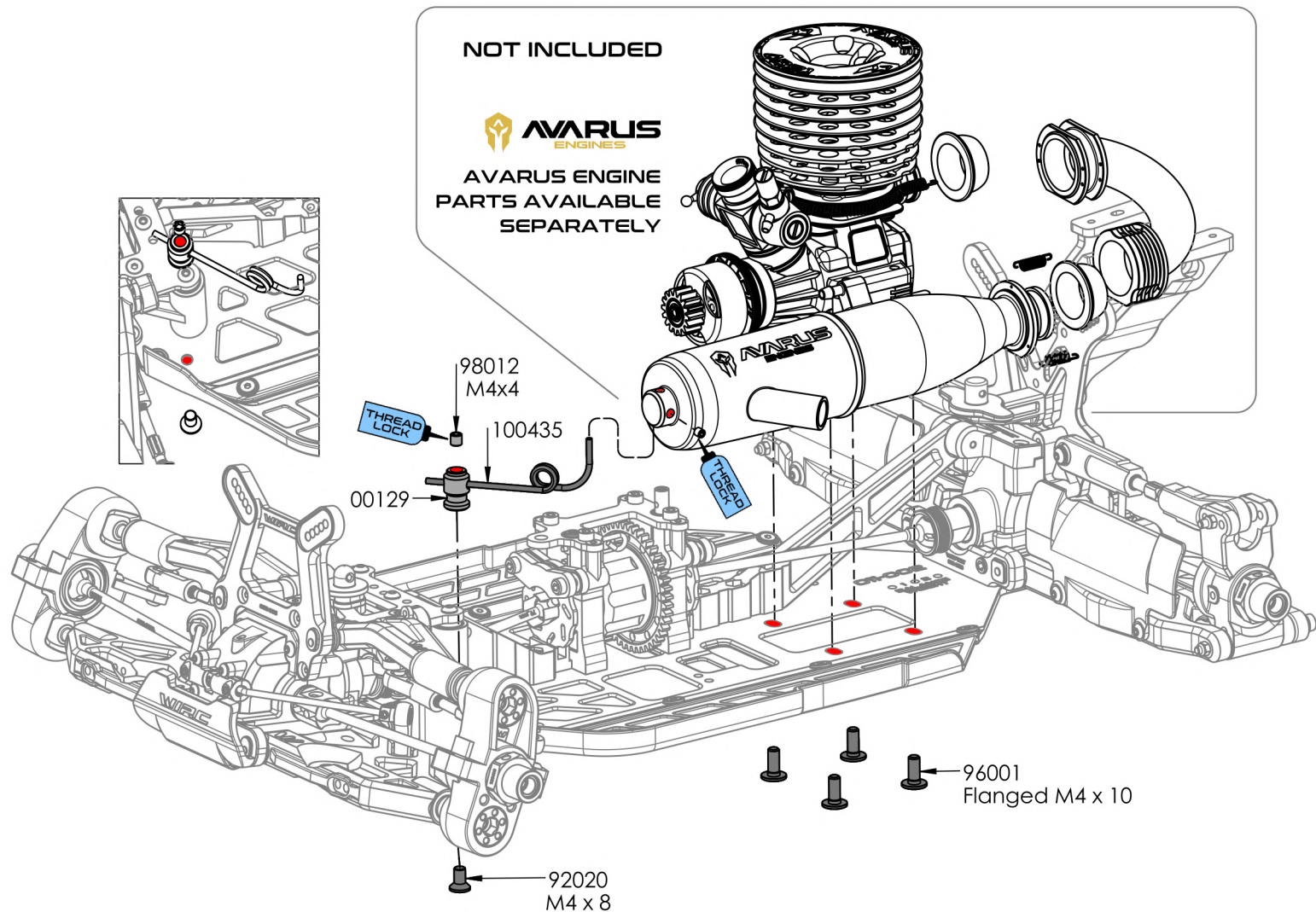
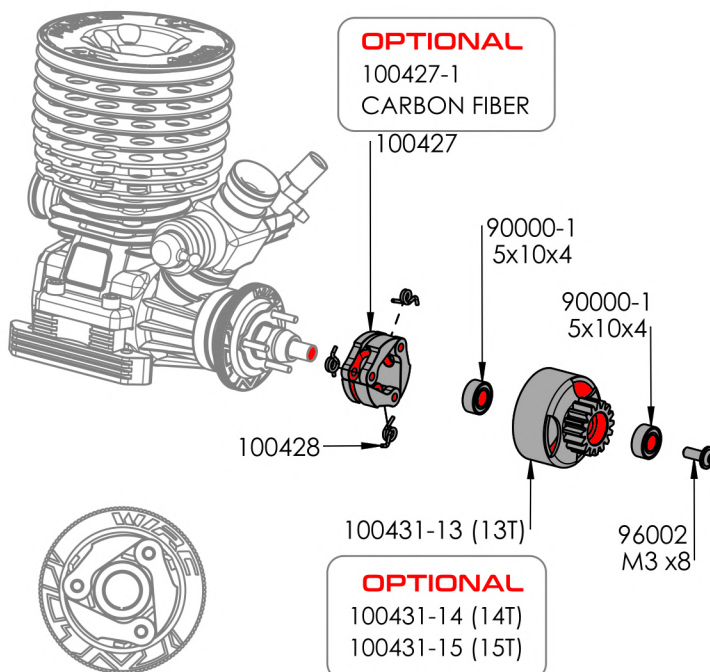
## Central transmission & Side Protection Mount



1



2





**OPTIONAL**

100326  
NOT INCLUDED

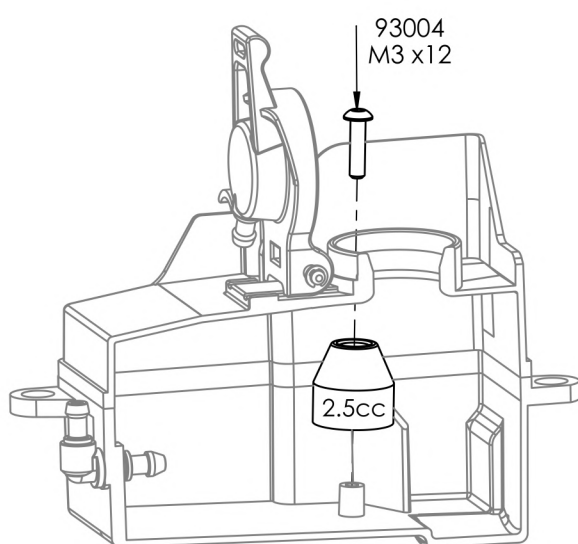
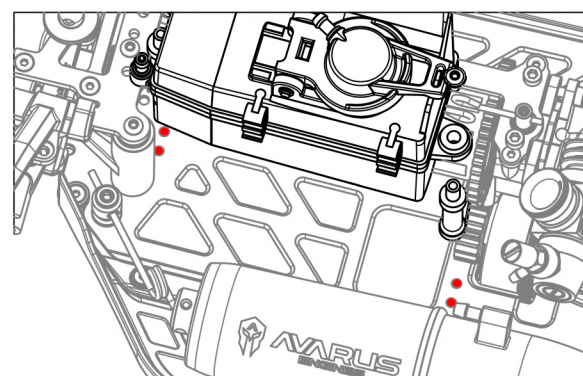


96002  
Flanged M3x8

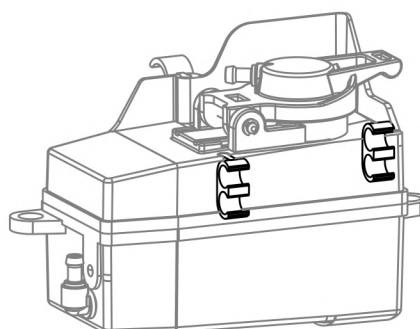
100325

100318

92003  
M3x10

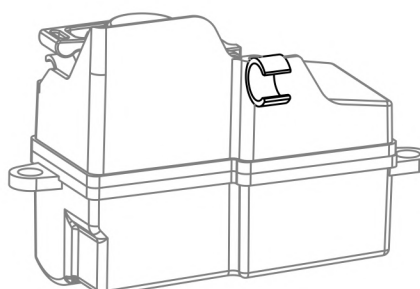


INSERT ALLOWS TO  
ADJUST THE FUEL  
VOLUME IN THE TANK



 HIGH POSITION

 LOW POSITION

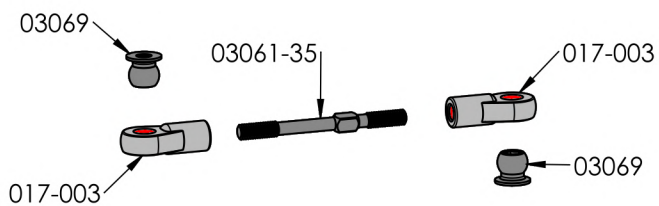


INTERCHANGEABLE  
WITH FUEL FILTER  
HOLDER



## Radio Case

1

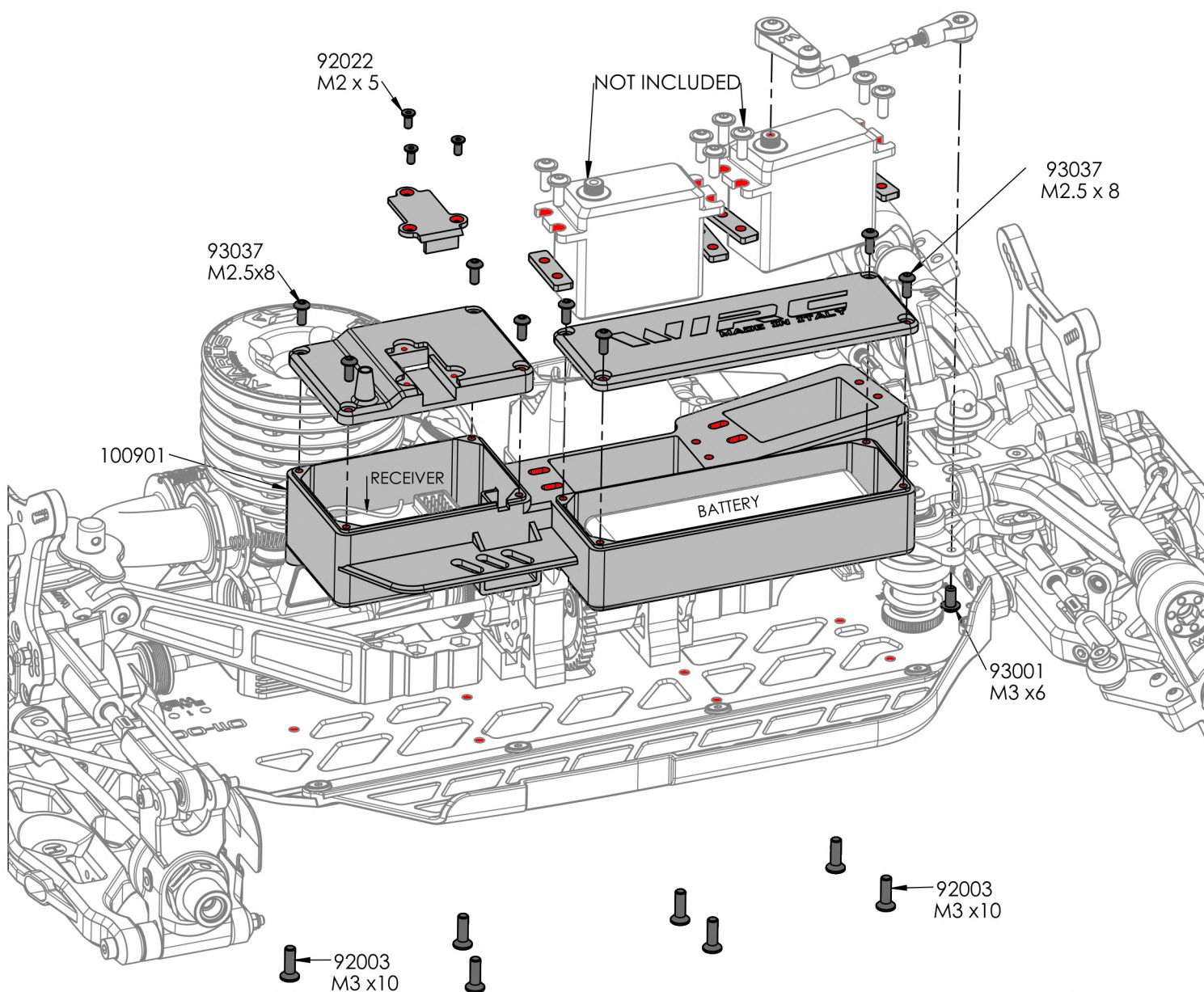
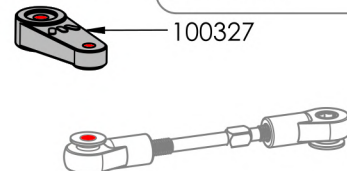


2

93002  
M3 x 8

**OPTIONAL**

ALU STEERING LEVER  
03471-23T  
03471-25T

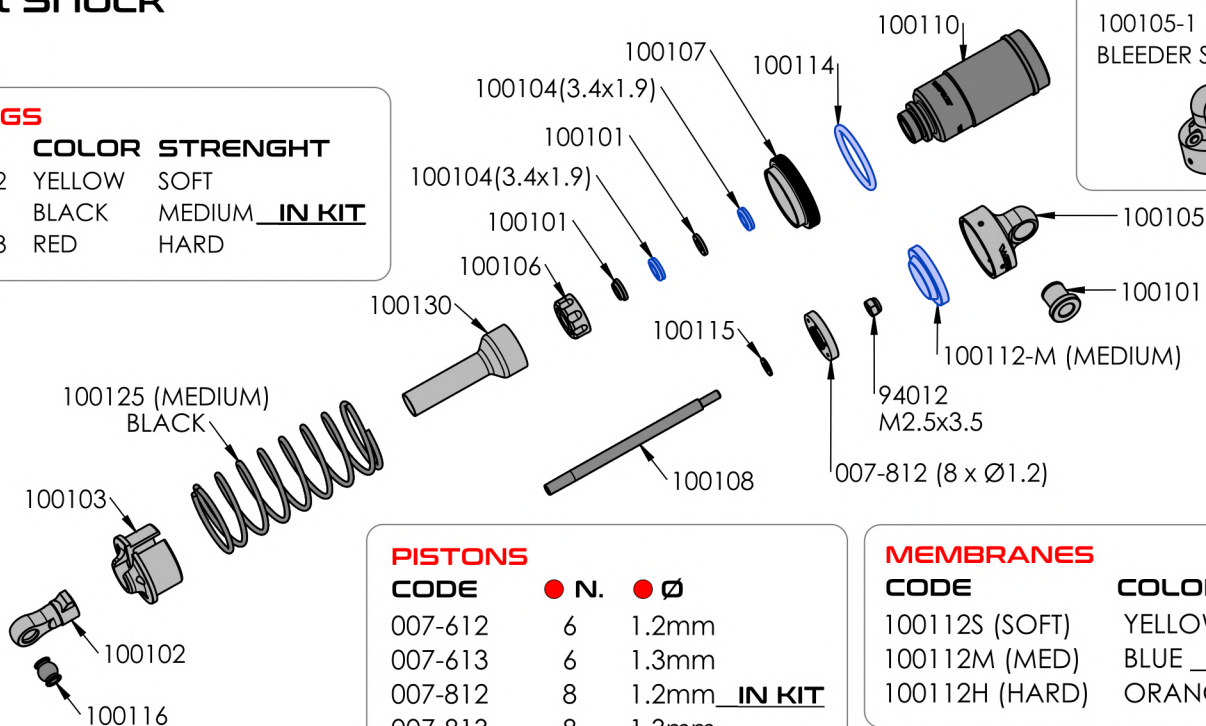


▲ BATTERY AND RECEIVER NOT INCLUDED

## Front Shock

### SPRINGS

CODE	COLOR	STRENGTH
100125-2	YELLOW	SOFT
100125	BLACK	MEDIUM <u>IN KIT</u>
100125-3	RED	HARD



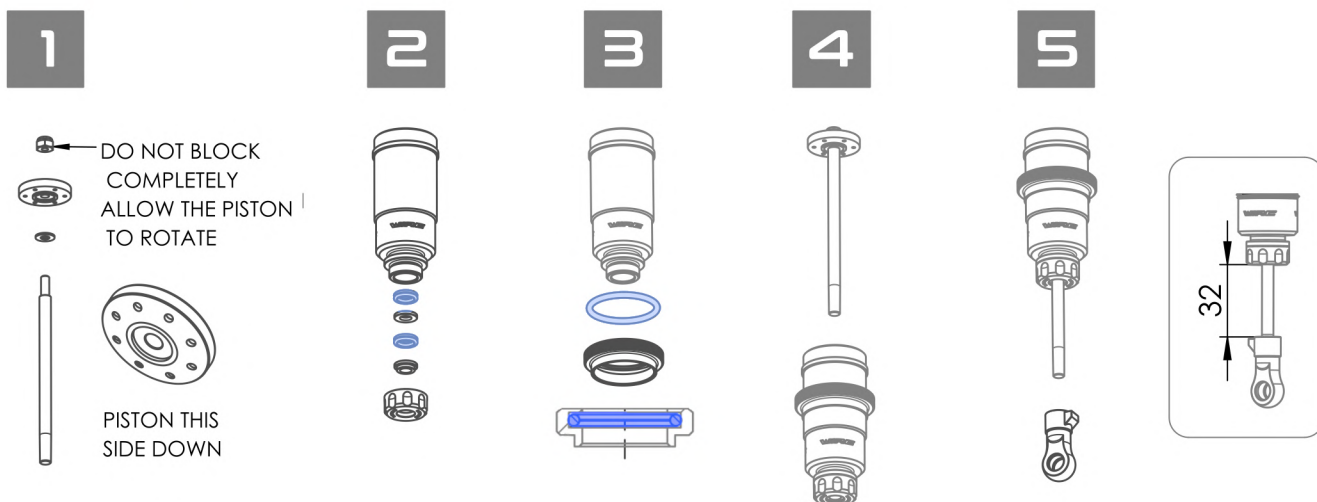
### PISTONS

CODE	N.	Ø
007-612	6	1.2mm
007-613	6	1.3mm
007-812	8	1.2mm <u>IN KIT</u>
007-813	8	1.3mm

### MEMBRANES

CODE	COLOR
100112S (SOFT)	YELLOW
100112M (MED)	BLUE <u>IN KIT</u>
100112H (HARD)	ORANGE

## ASSEMBLE 2 SETS



6



### SHOCK FILLING

Fully extend the piston rod so the piston is at the bottom of the shock body.

Hold the shock upright and fill the shock body with shock oil as in the picture.

Let the oil settle and allow air bubbles to rise to the top. Slowly move the piston up and down until no more air bubbles appear. Add shock oil as necessary.

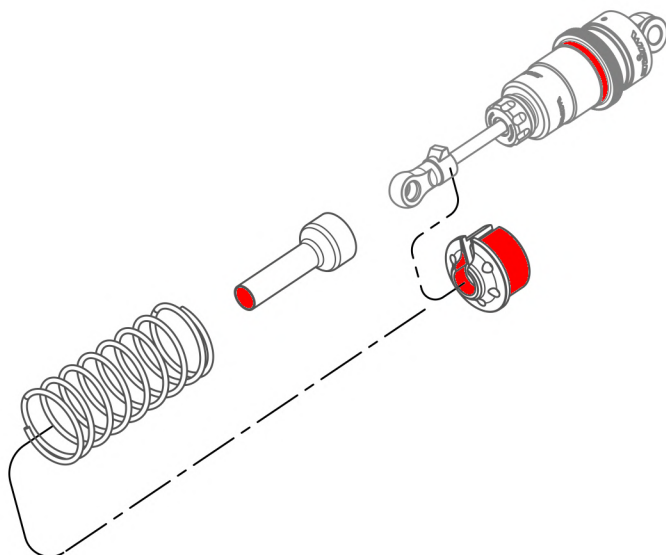
Pull the piston rod most of the way out of the shock bod. Let the shock rest for 5 minutes to allow the air bubbles to scape.



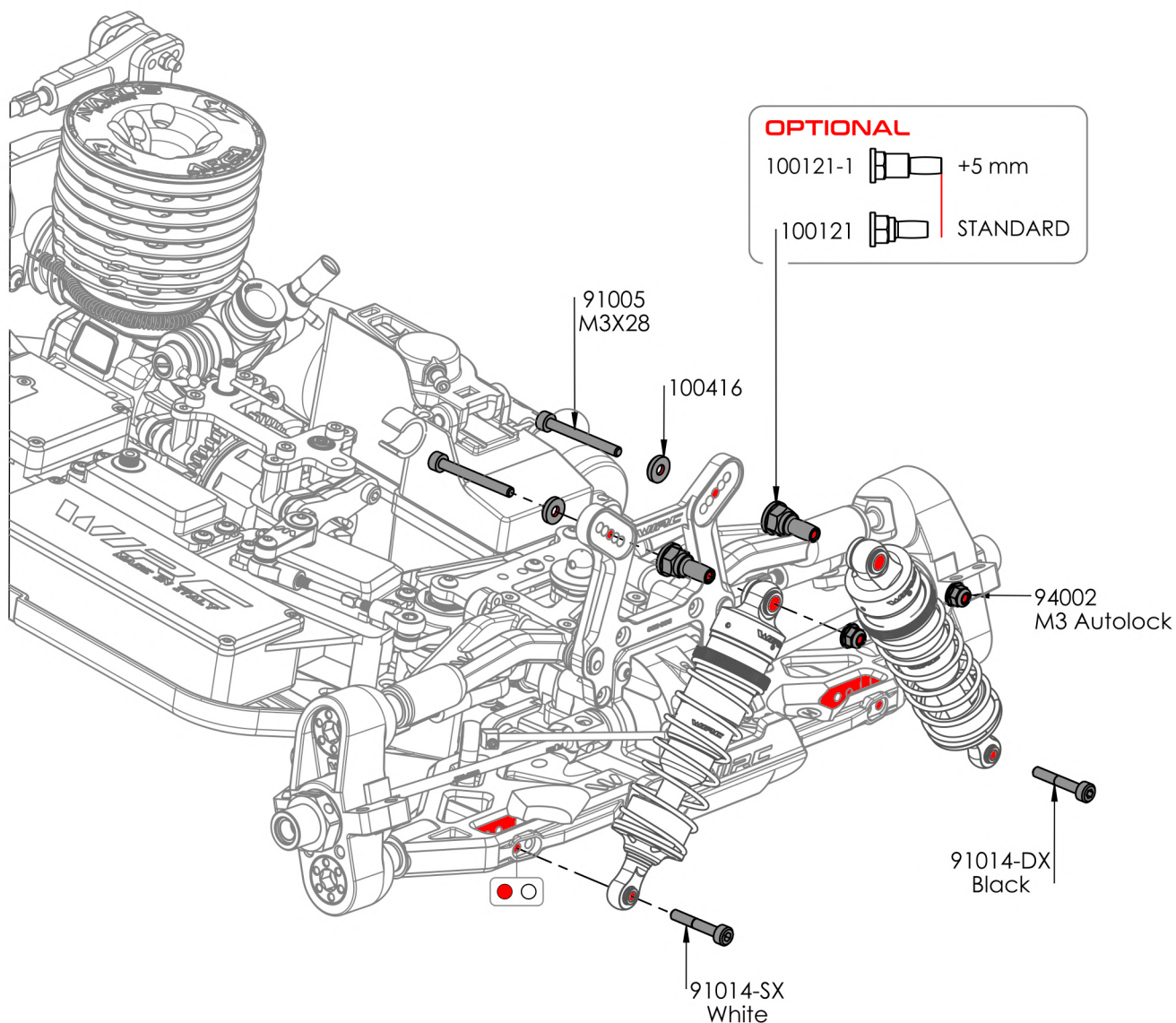
### P- ONE SHOCKS OIL

CODE	CST
SO-400	400
SO-500	500
SO-600	600 (IN KIT)
SO-700	700
SO-800	800

7



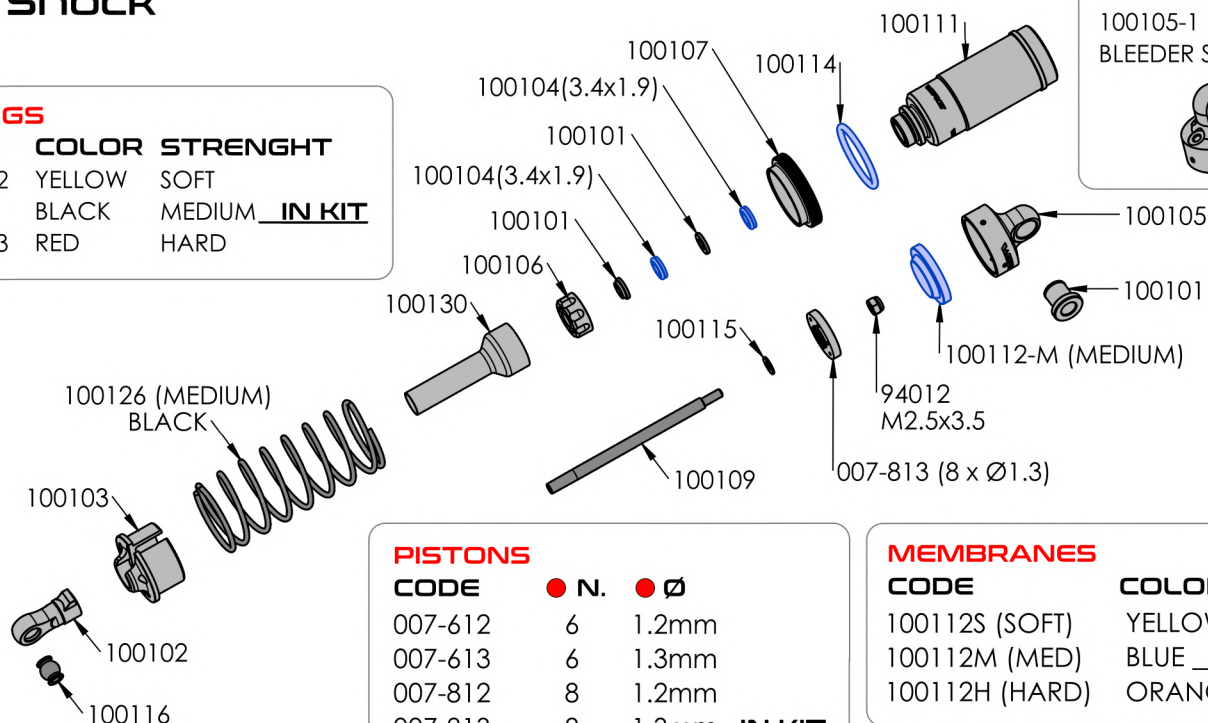
8





### SPRINGS

CODE	COLOR	STRENGTH
100126-2	YELLOW	SOFT
100126	BLACK	MEDIUM <u>IN KIT</u>
100126-3	RED	HARD



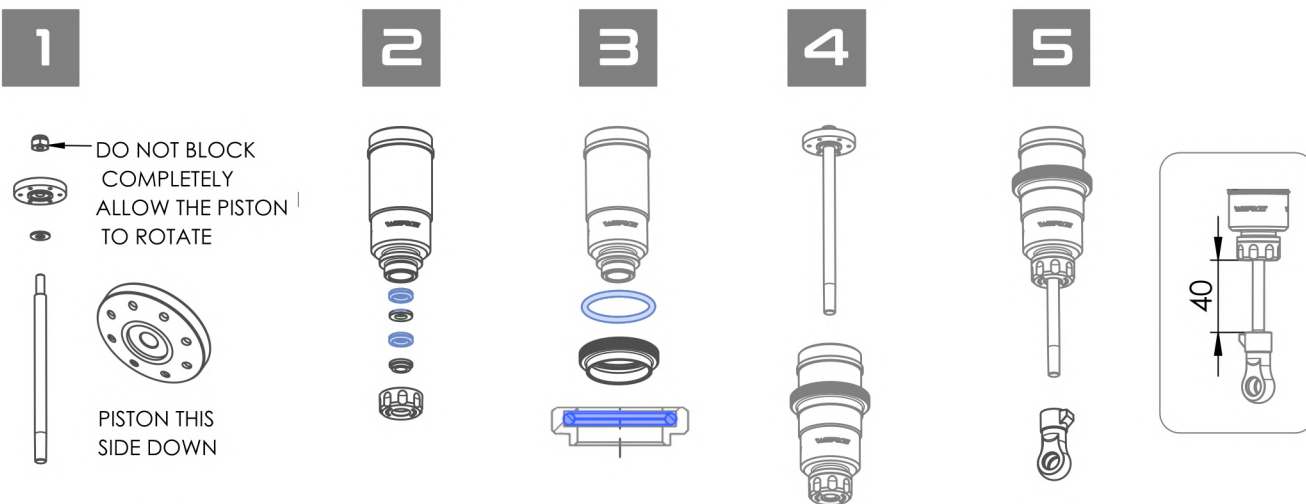
### PISTONS

CODE	N.	Ø
007-612	6	1.2mm
007-613	6	1.3mm
007-812	8	1.2mm
007-813	8	1.3mm <u>IN KIT</u>

### MEMBRANES

CODE	COLOR
100112S (SOFT)	YELLOW
100112M (MED)	BLUE <u>IN KIT</u>
100112H (HARD)	ORANGE

## ASSEMBLE 2 SETS



6



### SHOCK FILLING

Fully extend the piston rod so the piston is at the bottom of the shock body.

Hold the shock upright and fill the shock body with shock oil as in the picture.

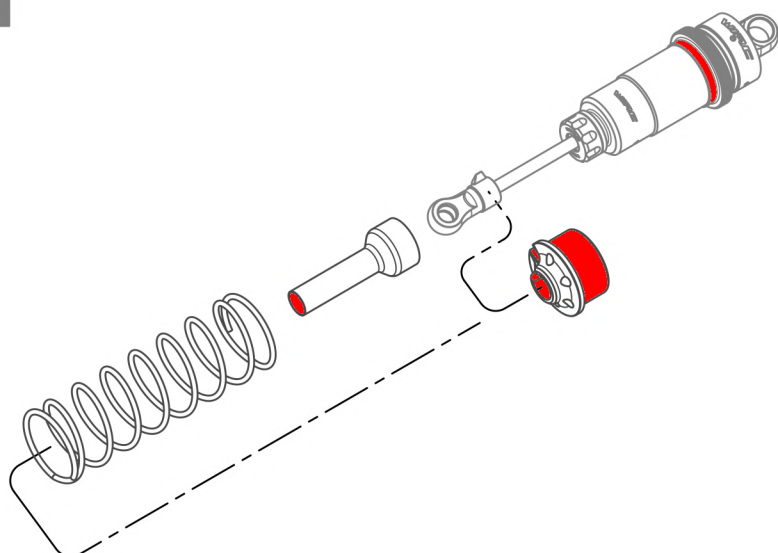
Let the oil settle and allow air bubbles to rise to the top. Slowly move the piston up and down until no more air bubbles appear. Add shock oil as necessary.

Pull the piston rod most of the way out of the shock body. Let the shock rest for 5 minutes to allow the air bubbles to scape.

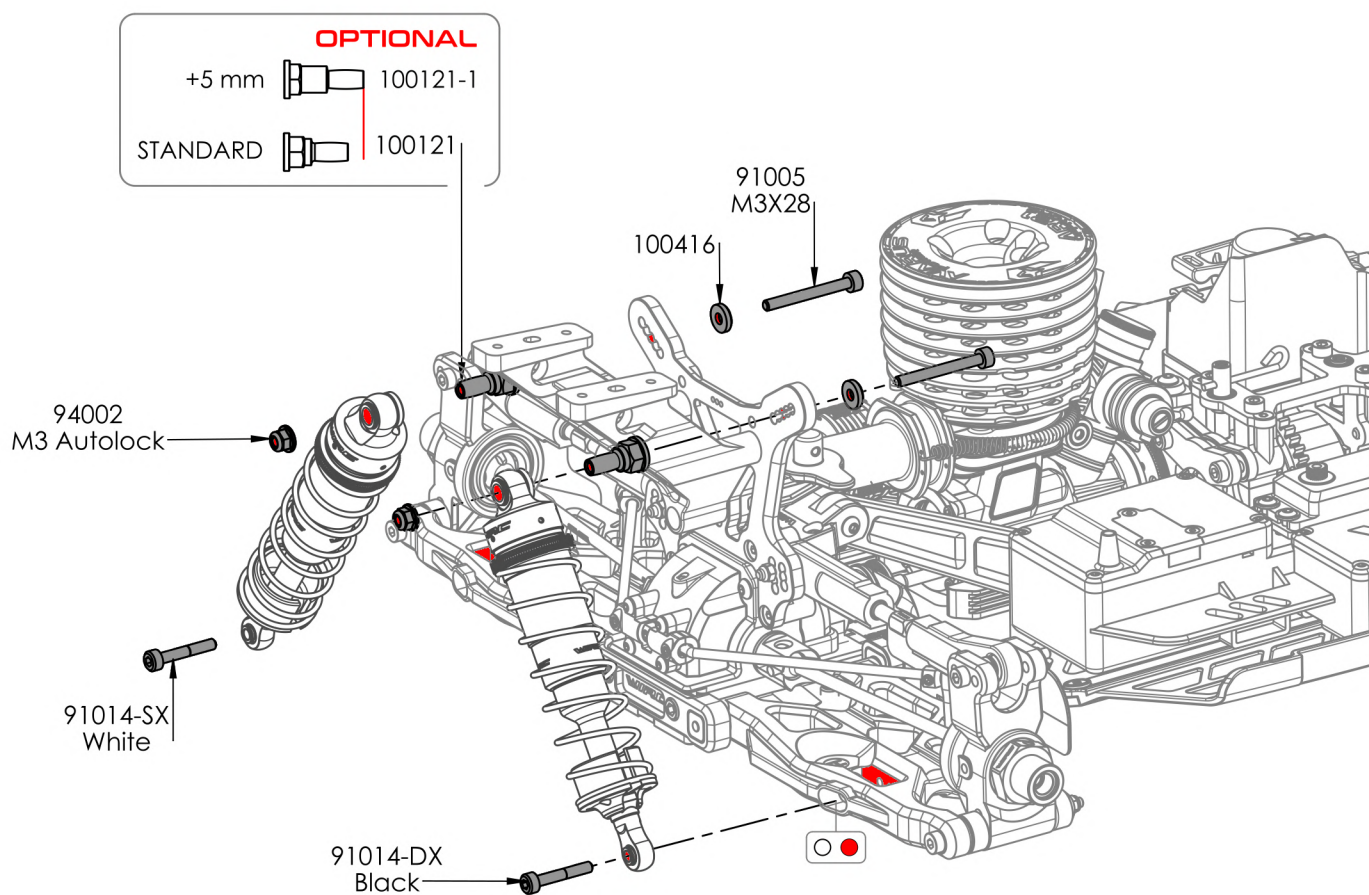
### P- ONE SHOCKS OIL

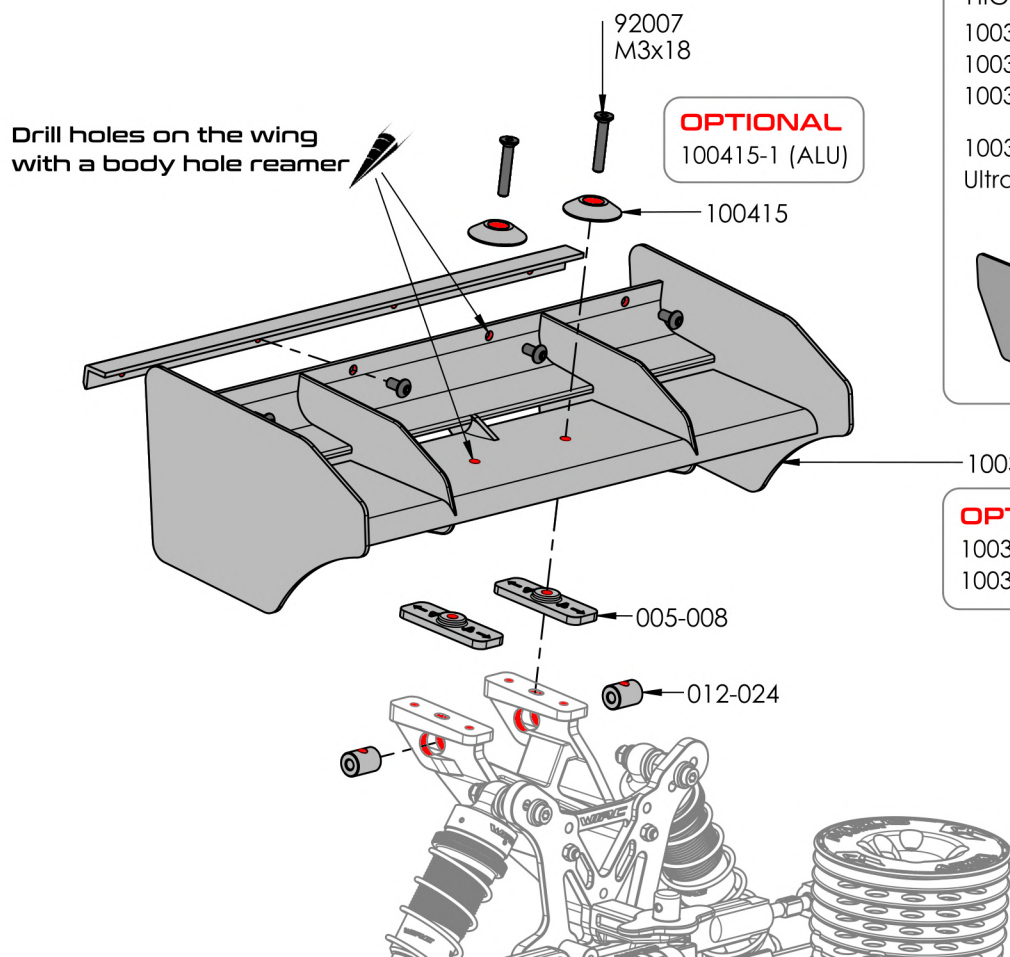
CODE	CST
SO-400	400
SO-500	500
SO-600	600 (IN KIT)
SO-700	700
SO-800	800

7



8





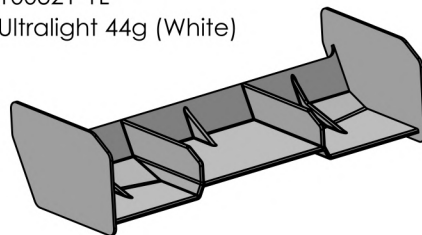
**OPTIONAL**  
100415-1 (ALU)

### OPTIONAL

HIGH DOWNFORCE WING

100321-1B (Black)  
100321-1Y (Fluo Yellow)  
100321-1W (White)

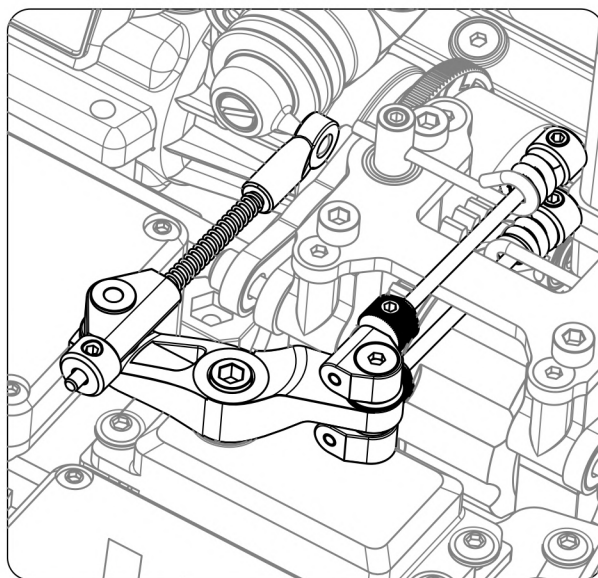
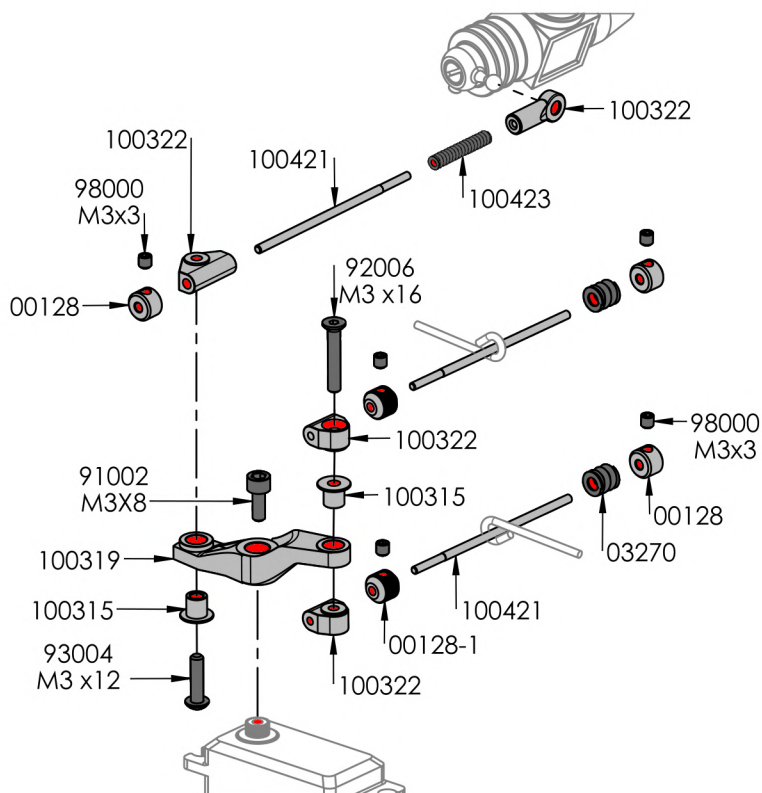
100321-1L  
Ultralight 44g (White)



### OPTIONAL COLORS

100321-W (White)  
100321-Y (Fluo Yellow)

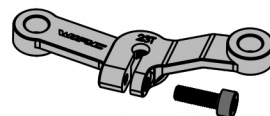
## Brake and Throttle leverage



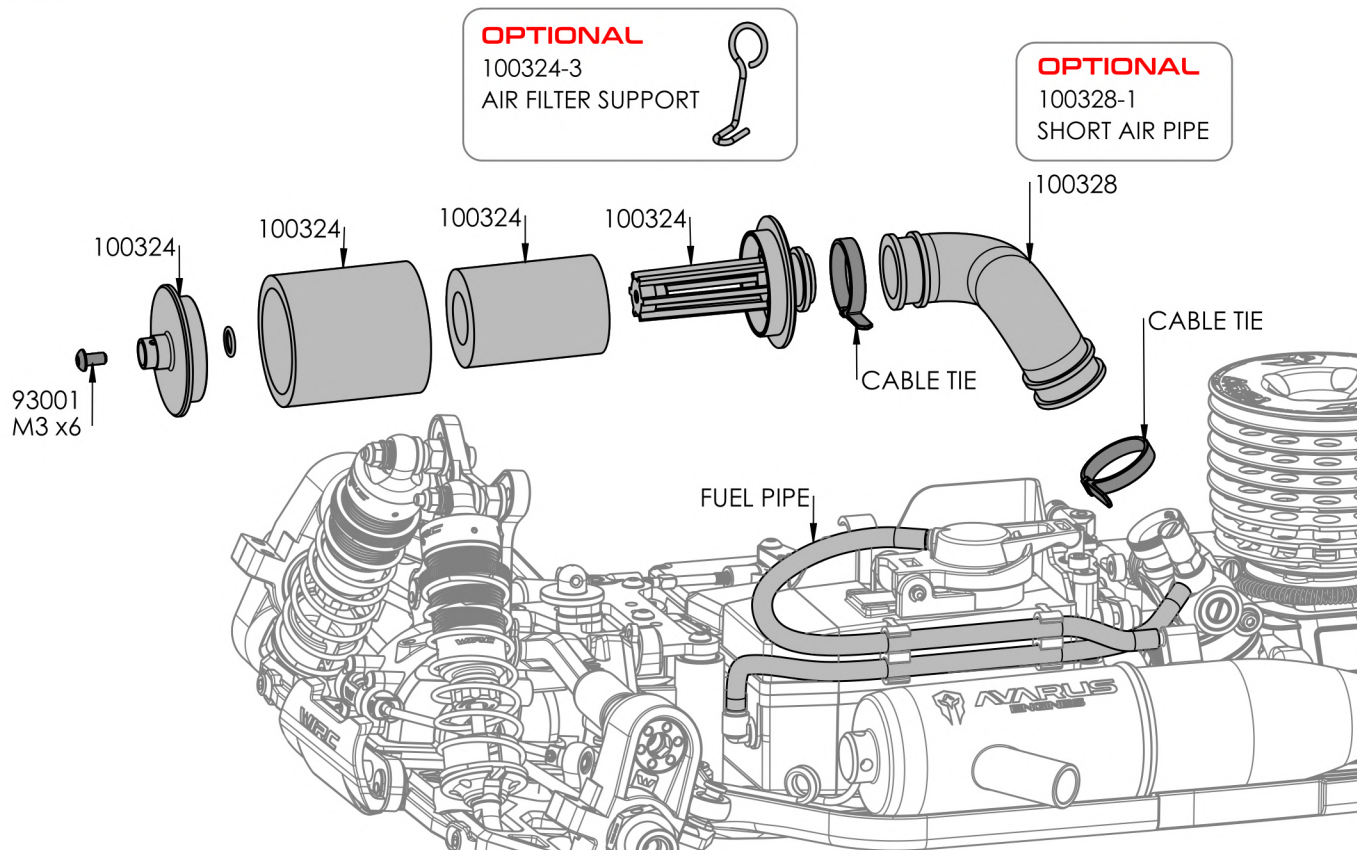
### OPTIONAL

ALU THROTTLE  
SERVO HORN

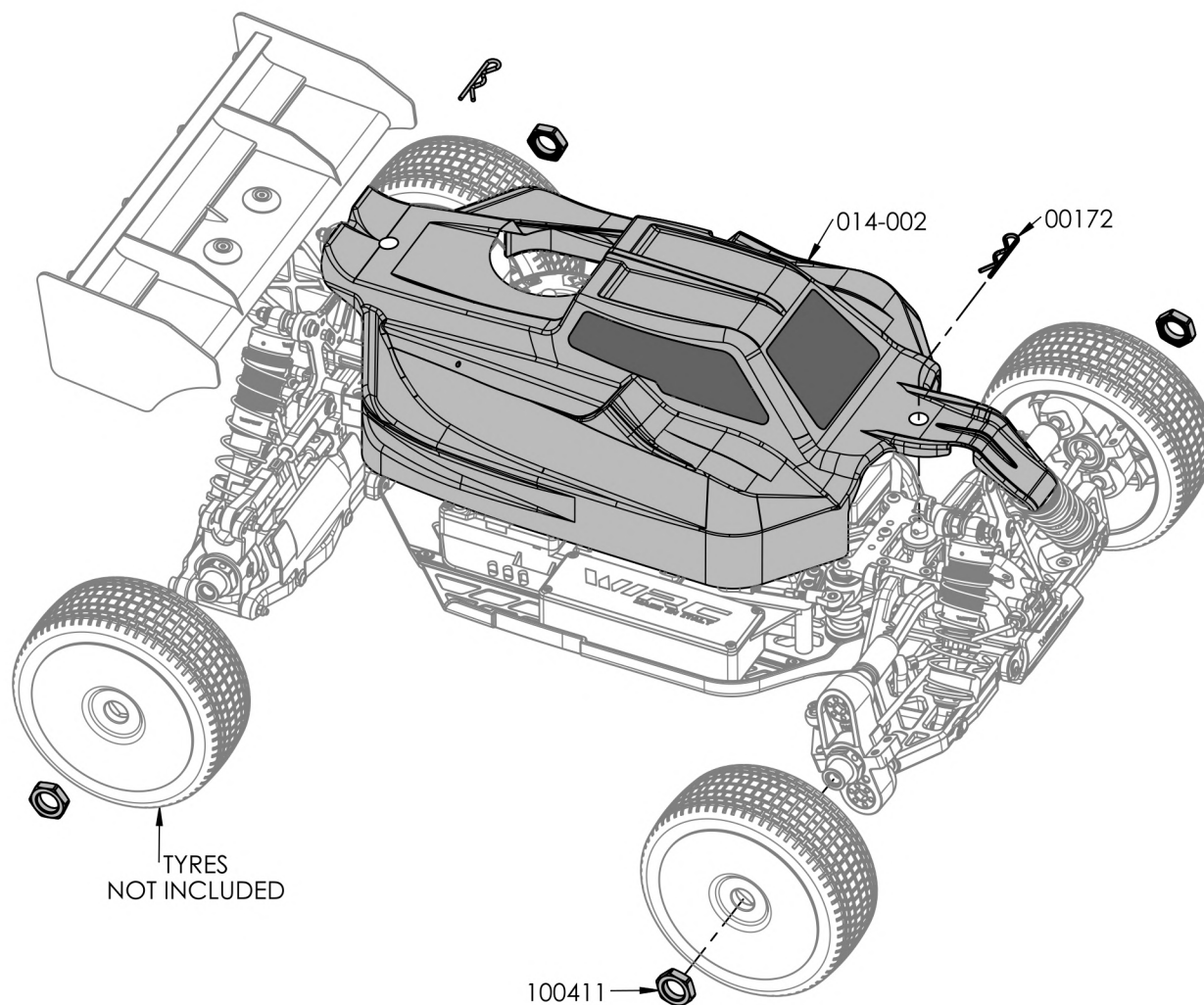
012-030 (23T)  
012-031 (25T)







## Final Assembly



Driver: \_\_\_\_\_

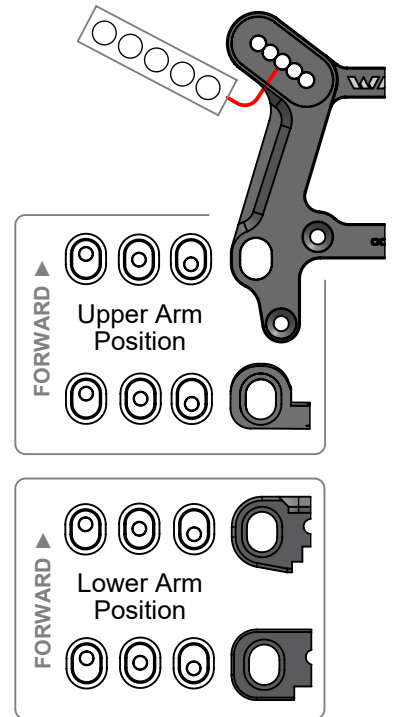
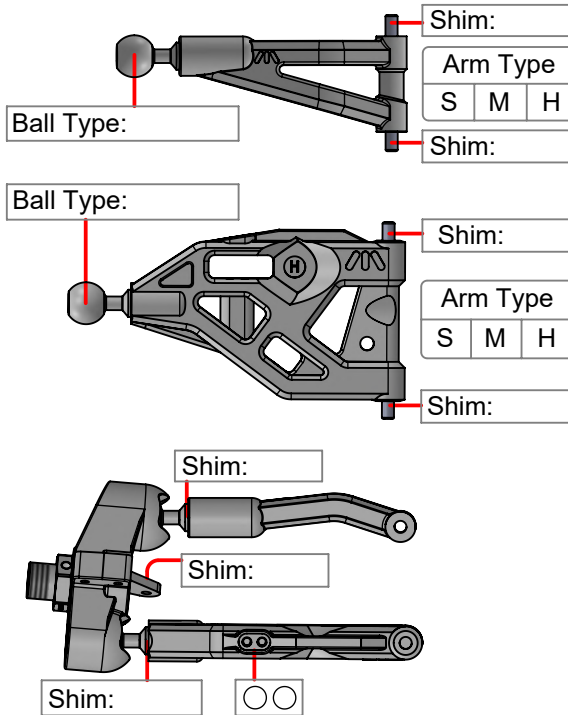
Track: \_\_\_\_\_

Date: \_\_\_\_\_

Event: \_\_\_\_\_

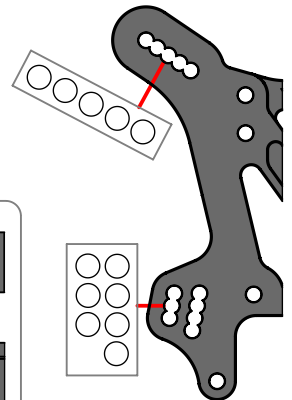
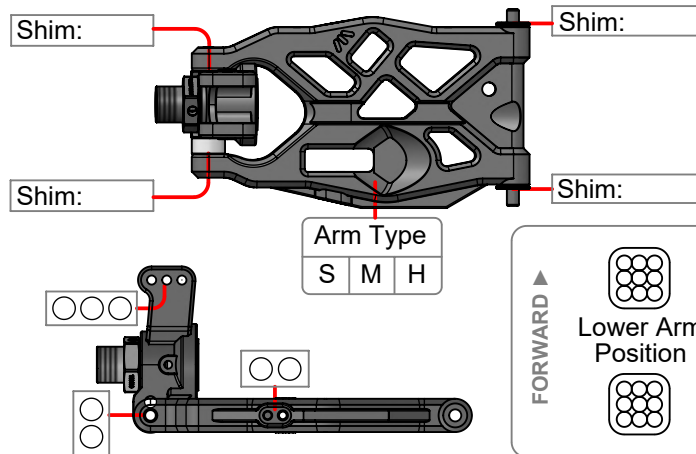
## FRONT

Ride Height:
Camber:
Toe:
Anti-Roll Bar
Size:
Gap:
Ackerman
Drive Shaft:
Chassie Brace:
Hex:



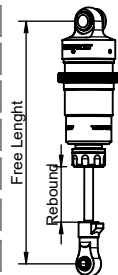
## REAR

Ride Height:
Camber:
Toe:
Anti-Roll Bar
Size:
Gap:
Drive Shaft:
Chassie Brace:
Hex:



## SHOCKS

	Front	Rear
Piston:		
Membrane:		
Oil:		
Spring:		
Rebound:		
Free Length:		



## DIFFERENTIAL

	Front	Center	Rear
Case Mat.:			
Oil:			
Crown Gear:			
Clutch Belt:		Spur Gear	
Shoe:		Spring	

## GEARING

## TYRES

	Front	Rear
Brand:		
Pattern:		
Insert:		
Wheels:		
Compound:		

## ENGINE

Type:	
Muffler:	
Manifold:	
Plug:	

## BODY & WING

Body:	
Wing:	
Wing Height:	
Gap to tower:	

## NOTES / OPTIONALS


## TRACK

Size :	
Traction:	
Surface:	

Total Vehicle Weight: \_\_\_\_\_

Driver: \_\_\_\_\_

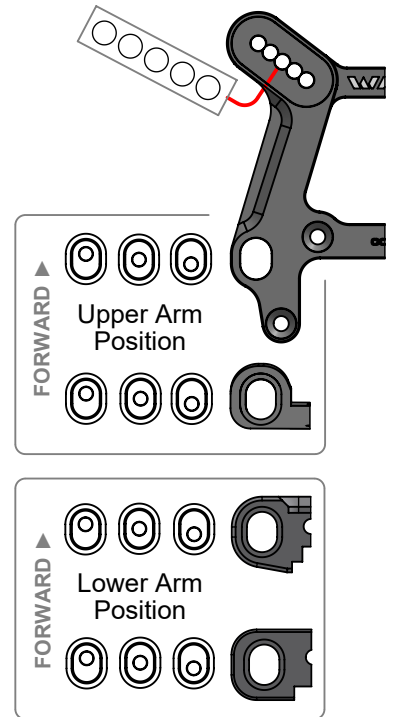
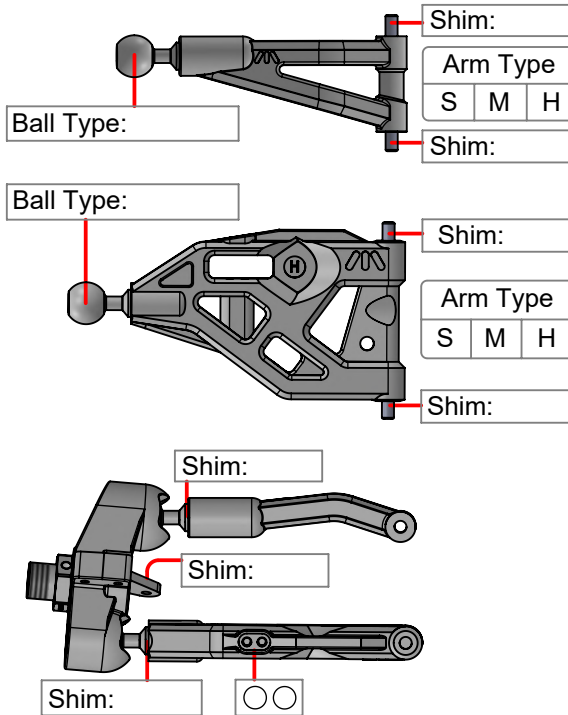
Track: \_\_\_\_\_

Date: \_\_\_\_\_

Event: \_\_\_\_\_

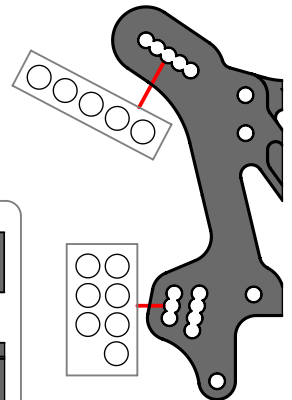
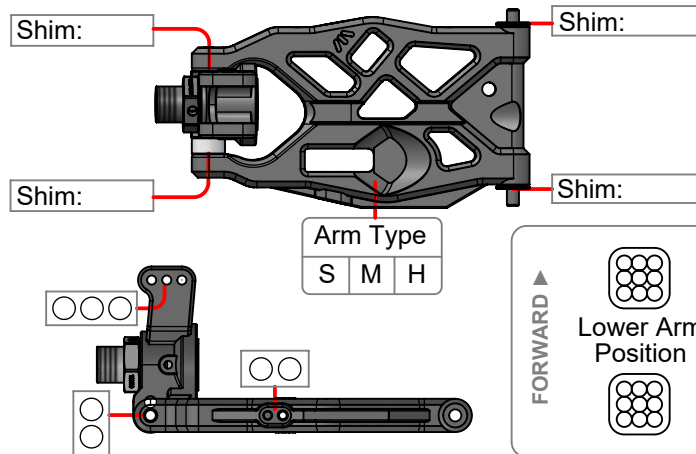
## FRONT

Ride Height:
Camber:
Toe:
Anti-Roll Bar
Size:
Gap:
Ackerman
Drive Shaft:
Chassie Brace:
Hex:



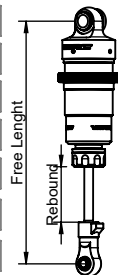
## REAR

Ride Height:
Camber:
Toe:
Anti-Roll Bar
Size:
Gap:
Drive Shaft:
Chassie Brace:
Hex:



## SHOCKS

	Front	Rear
Piston:		
Membrane:		
Oil:		
Spring:		
Rebound:		
Free Length:		



## DIFFERENTIAL

	Front	Center	Rear
Case Mat.:			
Oil:			
Crown Gear:			
Clutch Belt:			
Shoe:			

## GEARING

	Spur Gear	
Spring		

## TYRES

	Front	Rear
Brand:		
Pattern:		
Insert:		
Wheels:		
Compound:		

## ENGINE

Type:
Muffler:
Manifold:
Plug:

## BODY & WING

Body:
Wing:
Wing Height:
Gap to tower:

## NOTES / OPTIONALS


## TRACK

Size :
Traction:
Surface:

Total Vehicle Weight: \_\_\_\_\_





**NOTES:** \_\_\_\_\_

[illegible]



[WWW.WIRCACING.COM](http://WWW.WIRCACING.COM)