

Name: John Spencer

Date: 27/10/2013

Event: HNMC Winter Series

City: Ware

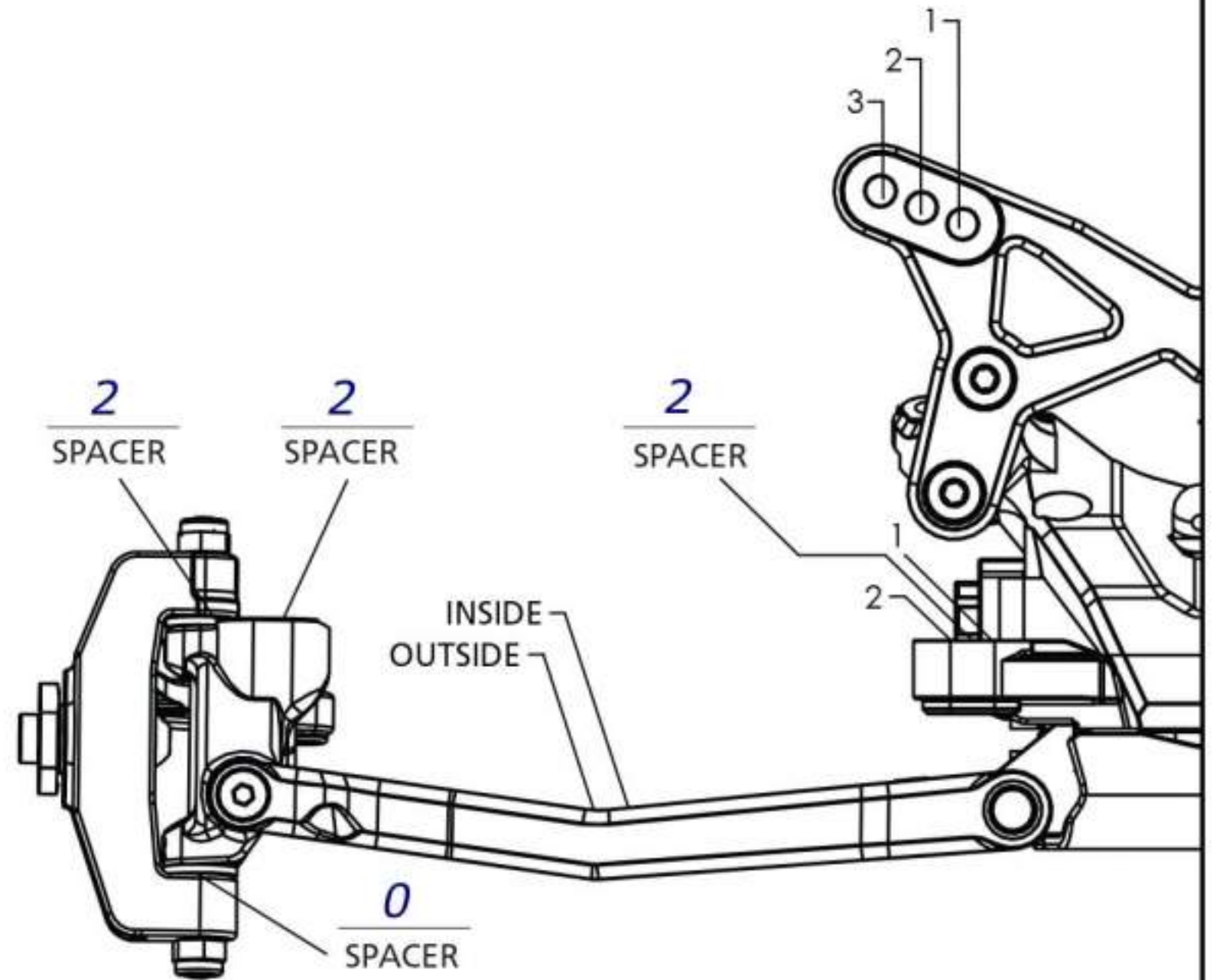
State: _____

Track: Herts (Westmill)

Track Conditions: Indoor Tight Smooth Hard Packed Blue Groove Wet Grass Low Bite High Bite
 Outdoor Open Rough Loose/Loamy Dry Dusty Astro Turf Med Bite Other _____

Front Suspension

Toe: 0
 Ride Height: 19mm
 Camber: 1°
 Caster: 0° 5° Trail: 2mm 4mm
 Kick Angle: 20° 25° 30°
 Sway Bar: -
 Oil: 600cst
 Piston: 4 x 55
 Spring: Standard Low Freq. Color: Blue
 Front Pivot: Aluminum Plastic HRC
 Kick Shim: Brass Plastic
 Shock Limiters: 2mm
 Shock Location: 2-inside
 Bump Steer Ball Stud: Standard Low Mount
 Bumper Steer Spacers: -
 Ackermann Ball Stud: Standard Low Mount
 Ackermann Spacers: -
 Camber Link: 1 - inside on hub

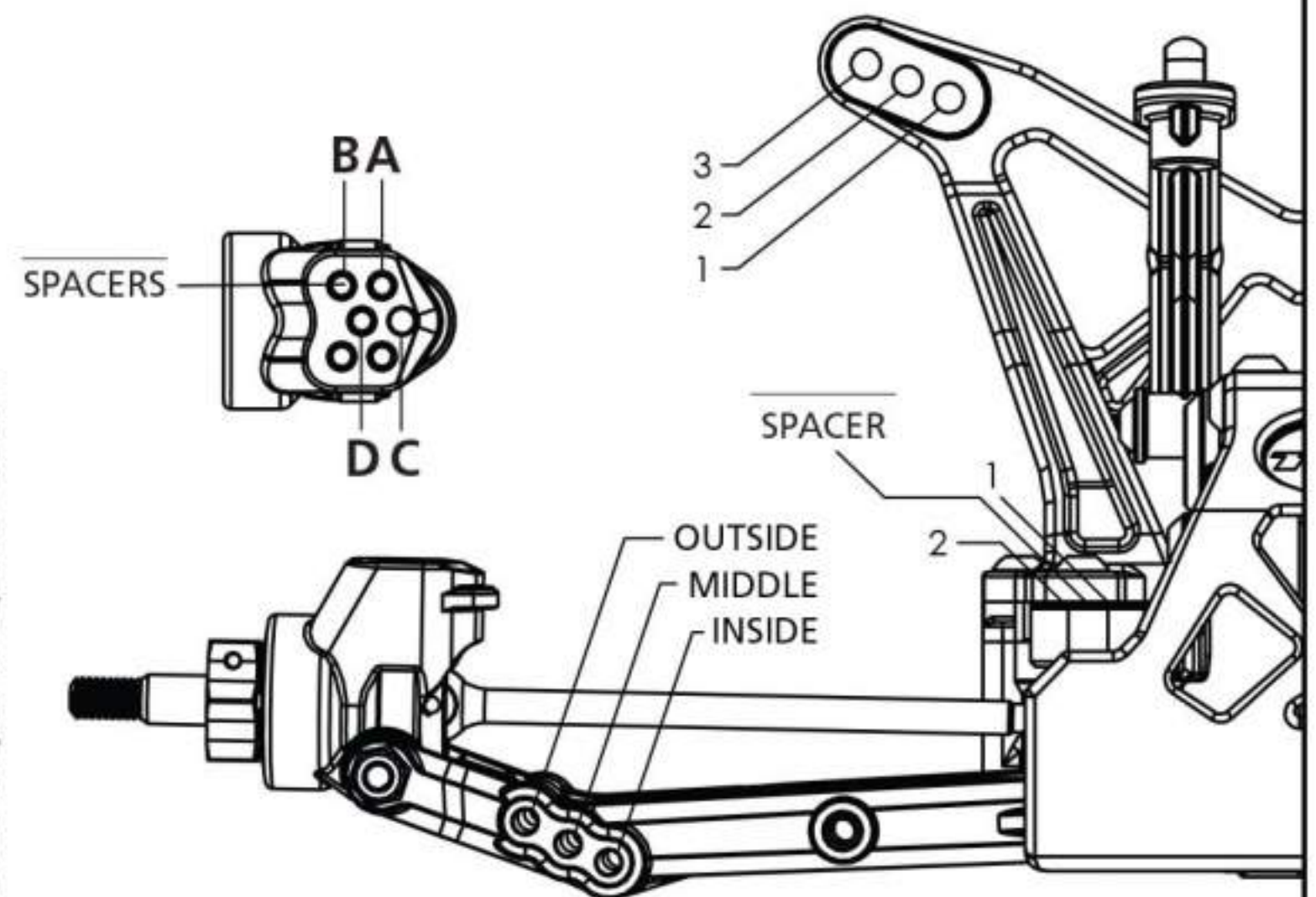


Notes: _____

Rear Suspension

Chassis Configuration: Rear Motor Mid Motor
 Toe: 3°
 Anti-Squat: 2°
 Roll Center: Low Roll Center (LRC) High Roll Center (HRC)
 Ride Height: 19
 Camber: -1
 Rear Hub Spacing: mid
 Hex Width: std
 Sway Bar: -
 Oil: 300
 Piston: 4 x 54
 Spring: Standard Low Freq. Color: Yellow
 Shock Limiters: -
 Camber Link: 1-d
 Shock Locations: 2-middle
 Wing/Wickerbill: Std/small gurney
 Battery Position: Saddle 5mm toward rear

Alterations by arm0 at petitrc dot com



Electronics

Radio: KO/DX3 Timing Advance: -
 Servo: Spektrum 6090 Throttle/Brake Expo: -20
 ESC: Dualsky Servo Expo: -
 Initial Brake: - Throttle/Brake EPA: -
 Drag Brake: - Motor: Dualsky 7.5
 Throttle Profile: custom Pinion: 24 Spur: 78
 Battery: Dualsky

Weight Placement
(Mark with "X")



Weight of each piece _____ oz./g

Tires
 Front: Cut Stagger Compound Yellow Insert _____ Additive _____
 Rear: BB Spike Green Answer
 Notes: _____