



INSTRUCTION MANUAL



PERFORMANCE FEATURES

- NEW DIFFERENTIAL HOUSING DESIGN ALLOWS FOR QUICK DIFFERENTIAL SWAPS / QUICK-ACCESS FRONT AND REAR DIFF DESIGN
- COVERED RECEIVER BOX AND ELECTRONICS MOUNTS
- NEWLY DESIGNED LOW-DRAG POLYCARBONATE (PC) BODYSHELL
- ANGLED BEVEL GEAR DESIGN IN FRONT AND REAR GEARBOXES FOR IMPROVED CENTER DOGBONE ALIGNMENT AND QUICKER ACCELERATION
- QUICK-RELEASE CENTER DIFF MOUNT FOR FAST DIFFERENTIAL ADJUSTMENT
- EQUIPPED WITH 17MM ANTI-LOOSENING HEX WHEEL NUTS
- ONE-PIECE WING MOUNT REDUCES DEFORMATION
- HIGH-STIFFNESS SHOCK SPRINGS
- NEW RECEIVER BOX DESIGN ALLOWS TRANSPONDER TO BE CONCEALED
- FRONT CASTER ANGLE ADJUSTABLE BLOCK FOR QUICK CASTER ANGLE ADJUSTMENT
- LIGHT WEIGHT FRONT, REAR AND CENTER DIFFERENTIALS

OFF ROAD ELECTRIC BUGGY

1/8 HIGH PERFORMANCE

- COMPLETE SET OF LIGHT WEIGHT OUT DRIVES
- 7075 CNC 5MM ALUMINIUM FRONT AND REAR SHOCK TOWERS
- 7075 CNC ARM HOLDER AND TOE PLATE
- 7075 3MM LIGHTENED CHASSIS WITH COUNTERSUNK SCREWS
- BATTERY TRAYS ACCOMMODATE THE LATEST SHORTY AND MID-SIZE BATTERIES
- COMPLETE HIGH PERFORMANCE BEARING SET
- TWO-PIECE CNC ALUMINUM MOTOR MOUNT
- FRONT / REAR CHASSIS RESERVATION SPACE FOR COUNTER WEIGHT AT FRONT / REAR CHASSIS
- CNC MACHINED HARDENED 13 TOOTH BEVEL PINION GEAR
- CNC MACHINED HARDENED 43 TOOTH BEVEL GEAR
- 2.5MM CARBON FIBER CENTER UPPER PLATE

THIS IS NOT TOY !

- DO NOT USE WITH CHILDREN UNDER 16 YEARS OF AGE OR WITHOUT ADULT SUPERVISION.

KIT IN INSTRUCTION MANUAL MAY BE DIFFER FROM PICTURE SHOWN.
ALL SPECIFICATIONS SUBJECT TO CHANGE WITHOUT PRIOR NOTICE.

CONTENTS

• REQUIRED FOR OPERATION	01
• INSTALLATION INSTRUCTION	02
• TIRES SETTING GUIDE	26
• SETUP SHEET	27
• SPARE PARTS LIST	28

WARNINGS

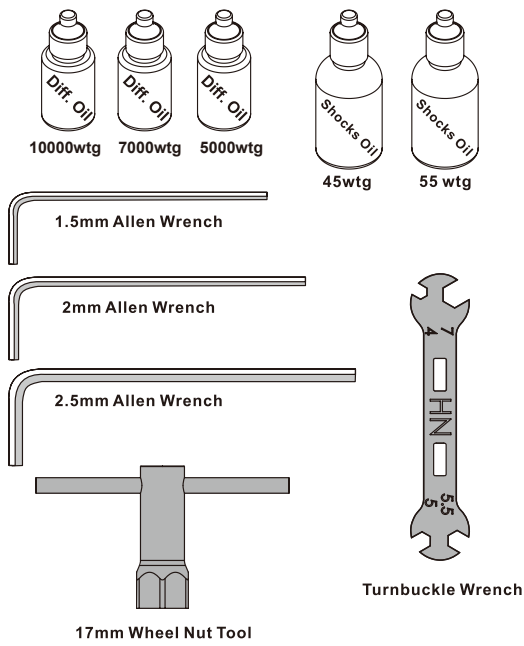
- This product is not intended for those under 14 years of age without proper adult supervision. The product is not a toy. It is a precision machine requiring proper assembly and setup to avoid accidents and it is the responsibility of the owner to operate this product in a safe manner as it can cause serious personal injury and damage to property due to carelessness or misuse.
- Operate this product within your ability. Do not operate under tired condition.
- Choose an appropriate operating site consisting of flat, smooth ground, and clear open field. Do not operate near buildings, high voltage cable lines, or trees to ensure safety operation. Operate in safe area only, away from other people. RC models are prone to accidents, failures, and crashes due to a variety of reasons including, lack of maintenance, user error, and radio interference. Users are responsible for their actions and damage or injury occurring during the operation.
- You should complete a successful pre-run check of your radio equipment and model prior to each run.

WARNING NOTES

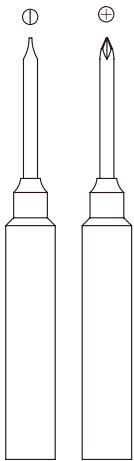
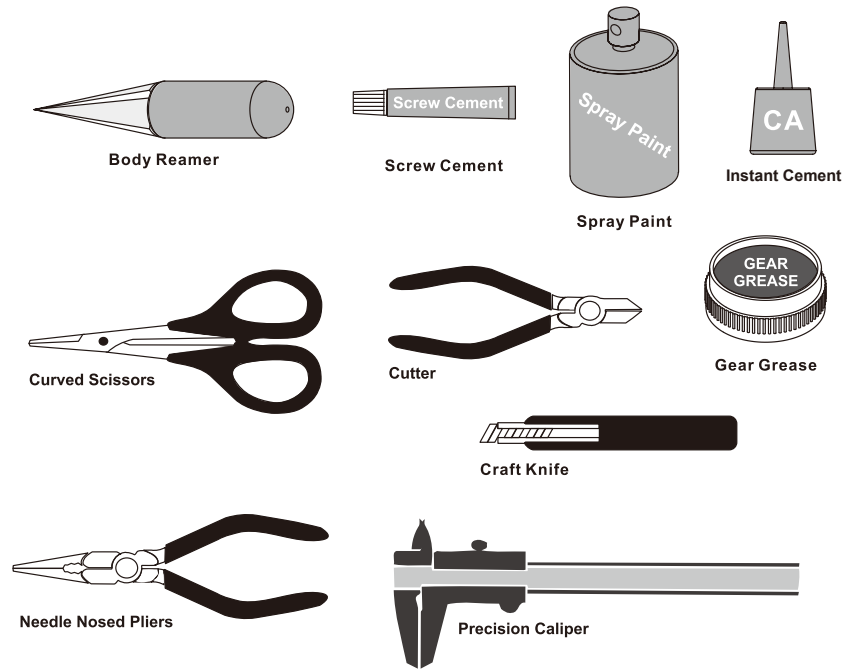
- Don't drive your model car when it raining or thundering to keep safety.
- Keep your model car in dry normal temperature condition, and keep away from water.
- Please do not use other optional parts to install our model car if you can not make sure it can match your car or not. And please do don't over load or or use it to do breaking local law.
- Please keep car away from fire as it was mostly made by plastic and electric material.
- If you are in doubt of your ability to operate the model, we strongly recommend that you seek assistance from experienced RC users or join your local modeling club to gain the required knowledge and skill. As the manufacture and distribution, we assume no liability for the use of this product.

REQUIRED FOR OPERATION

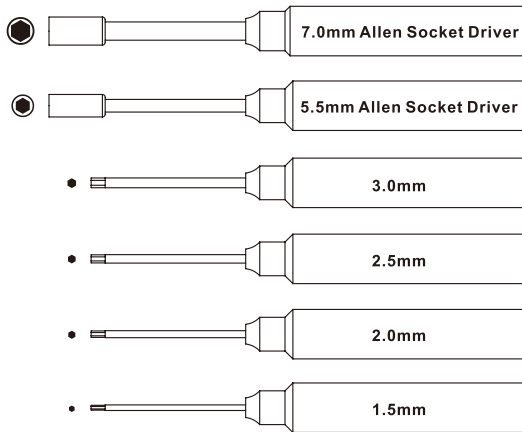
INCLUDED ITEMS



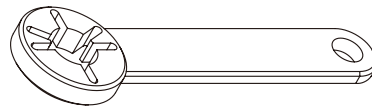
TOOLS NOT INCLUDED IN THE KIT



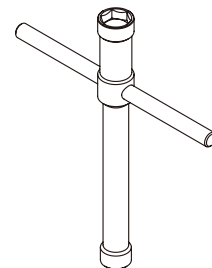
Screw Drivers



Allen Drivers



Flywheel Tool



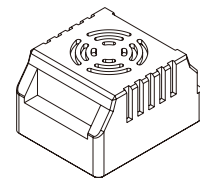
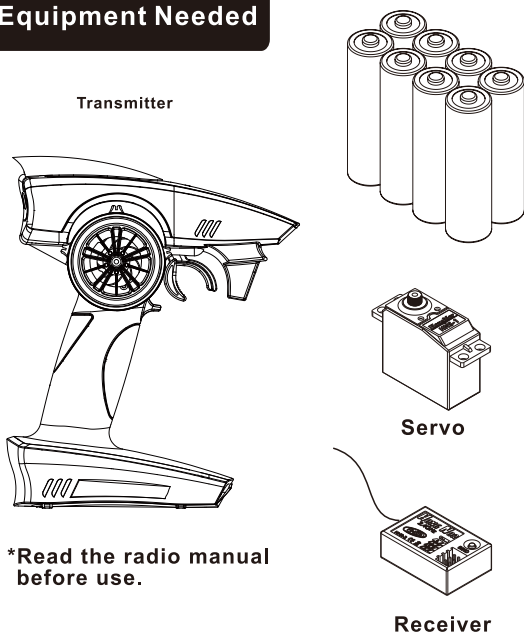
Cross Wrench

HONG NOR
#339

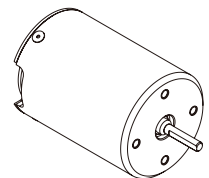


Air Filter Oil

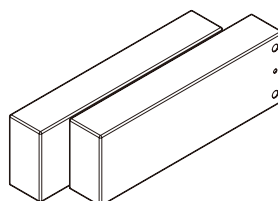
Equipment Needed



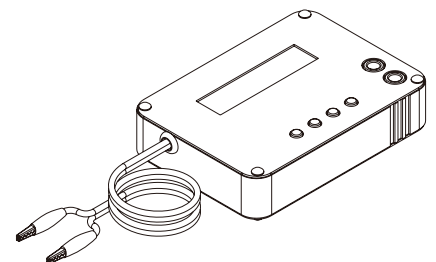
Brushless Electric Speed Controller



Brushless Motor



7.4V Li-Po Battery(Hard Case)



Li-Po Battery Charger

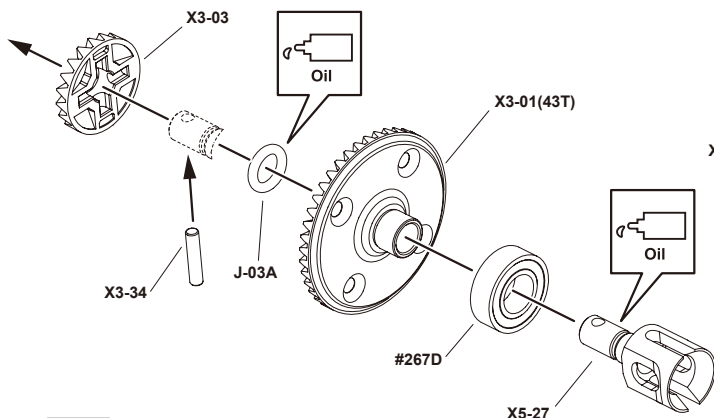
1 ASSEMBLY OF THE FRONT AND REAR DIFF.



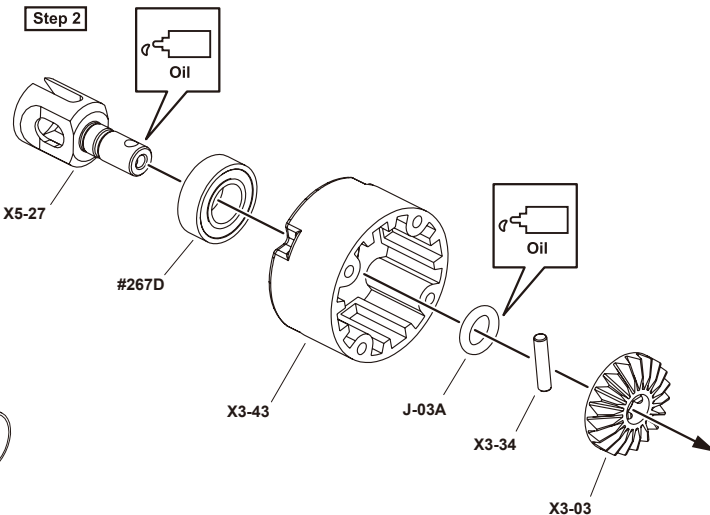
NO.1

Build two differentials for front and rear.

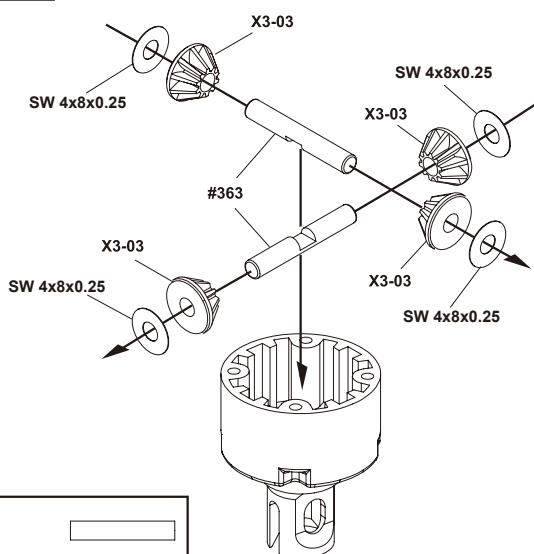
Step 1



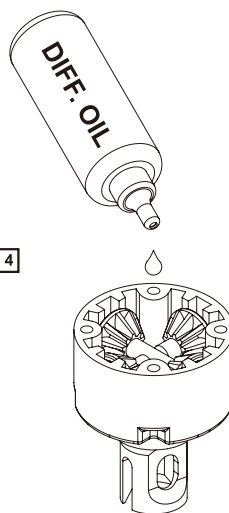
Step 2



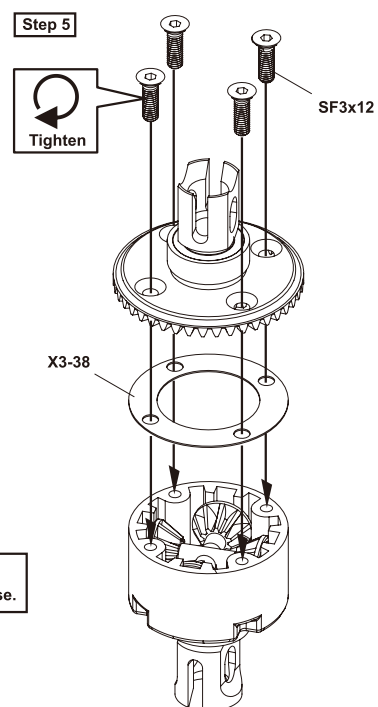
Step 3



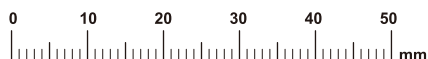
Step 4



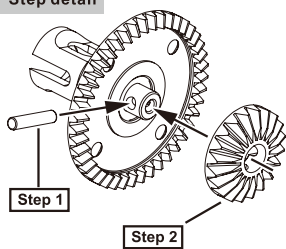
Step 5



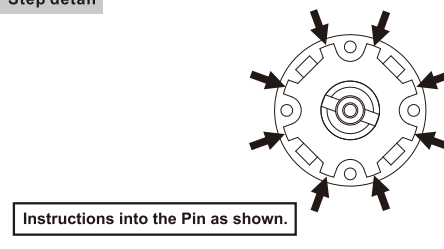
- Use the Diff. Oil #7000 for front and #5000 for rear.
- Use White Oil pen mark front diff. case and rear diff. case.



Step detail

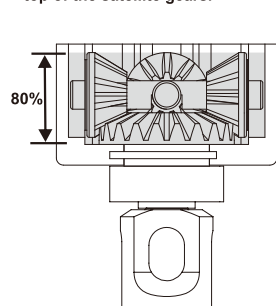


Step detail



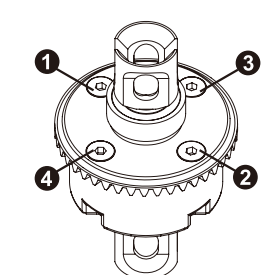
Step detail

Fill the diff oil just level with the top of the satellite gears.

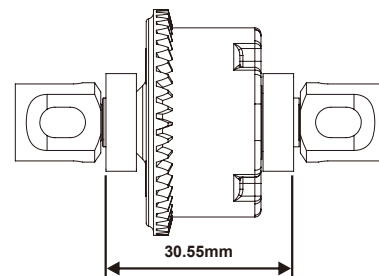


Step detail

Repeat tightening in this order



After assembly the differential should be 30.55 mm measured from the ends of the installed ball-bearings. If differential is longer, hold the bevel gear and retighten the 4 screws.



X3-34
2.5x11.8mm Pinx4

J-03A
P6 O-Ringx4

#267D
8x16x5mm
Ball Bearingx4

SW 4x8x0.25
4x8x0.25mm
Washerx8

#363
4mm Alum. Cross Pinx4

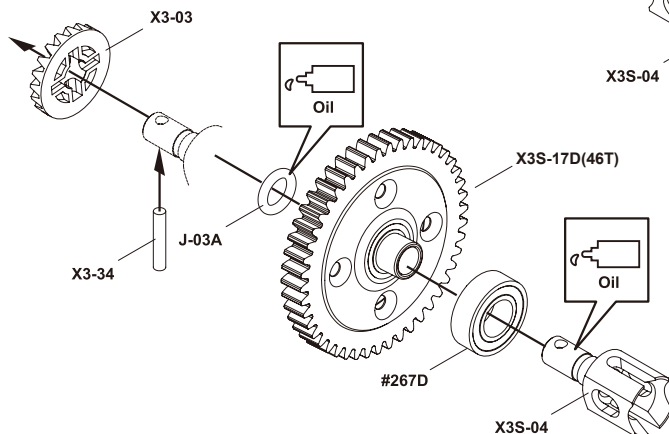
SF3x12mm
Flat Head Hex Screwx8

2 ASSEMBLY OF THE CENTER DIFF.

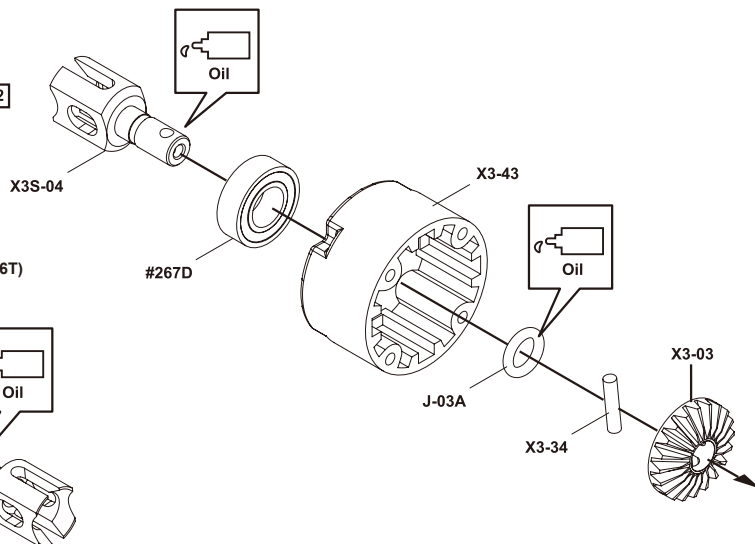


NO.1

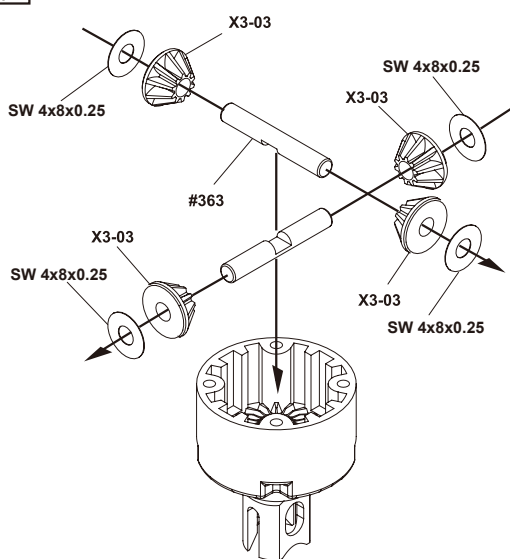
Step 1



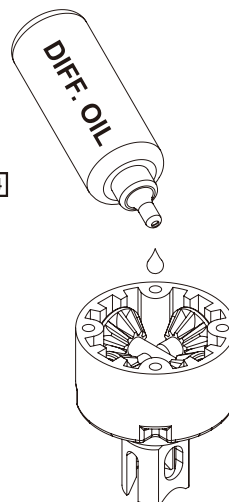
Step 2



Step 3

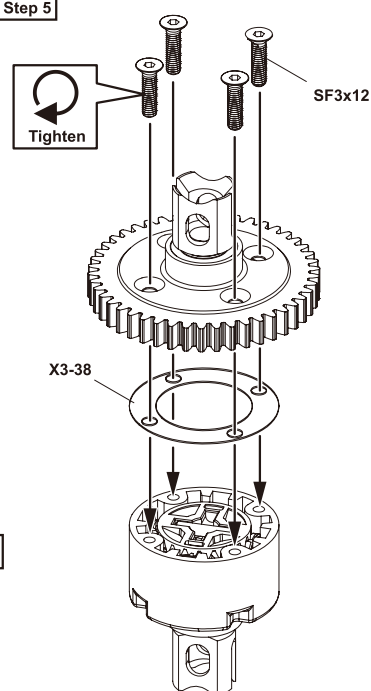


Step 4

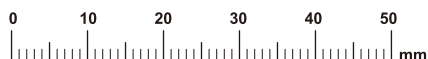


Use the Diff. Oil #10000 for the center diff.

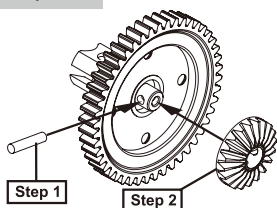
Step 5



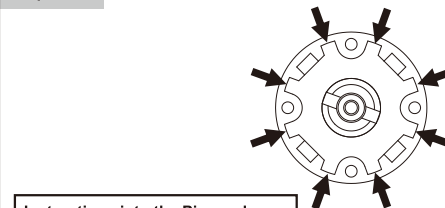
- X3-34
2.5x11.8mm Pinx2
- J-03A
P6 O-Ringx2
- #267D
8x16x5mm
Ball Bearingx2
- SW 4x8x0.25
4x8x0.25mm
Washerx4
- #363
4mm Alum. Cross Pinx2
- SF3x12mm
Flat Head Hex Screwx4



Step detail

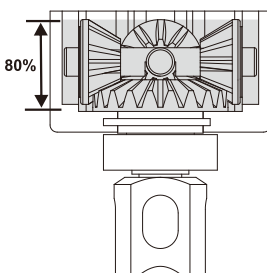


Step detail



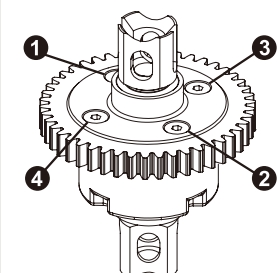
Step detail

Fill the diff oil just level with the top of the satellite gears.

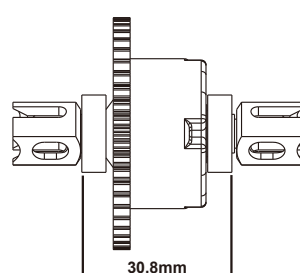


Step detail

Repeat tightening in this order



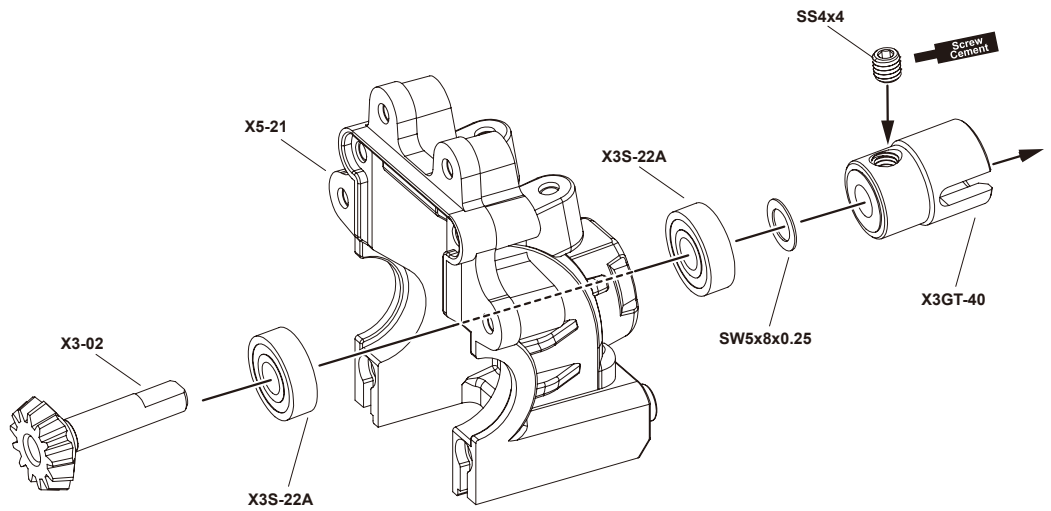
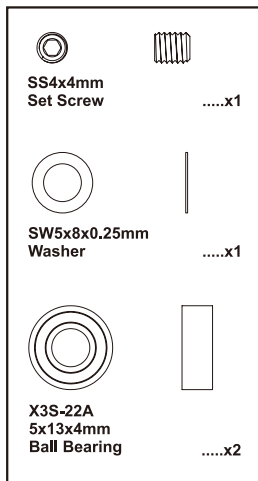
After assembly the differential should be 30.8mm measured from the ends of the installed ball-bearings. If differential is longer, hold the bevel gear and retighten the 4 screws.



3 ASSEMBLY OF THE FRONT GEAR CASE



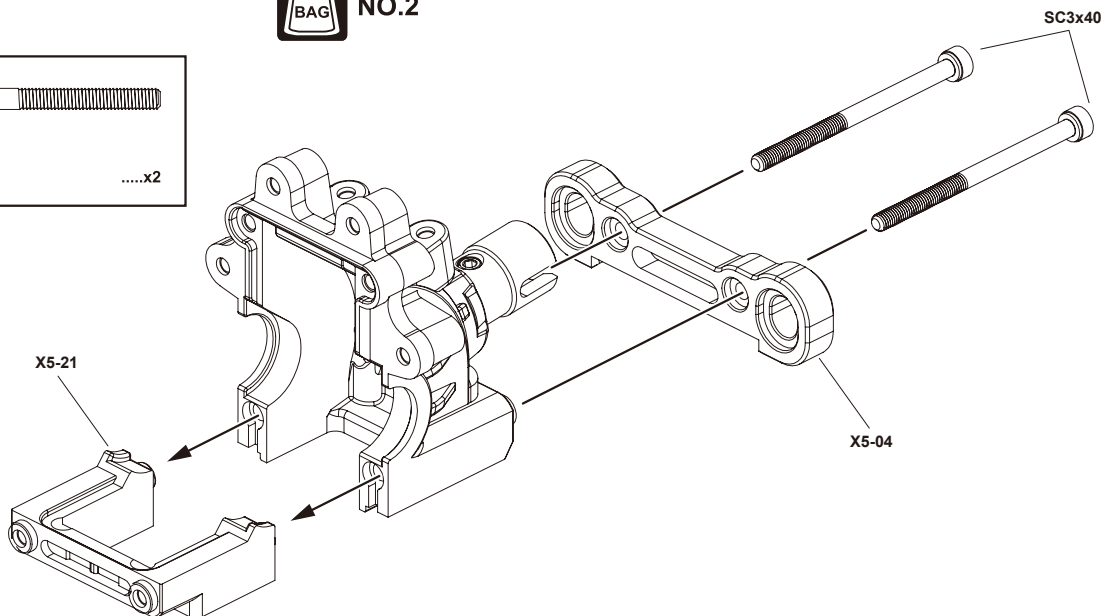
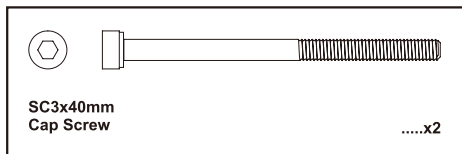
NO.2



4 ASSEMBLY OF THE FRONT GEAR CASE



NO.2

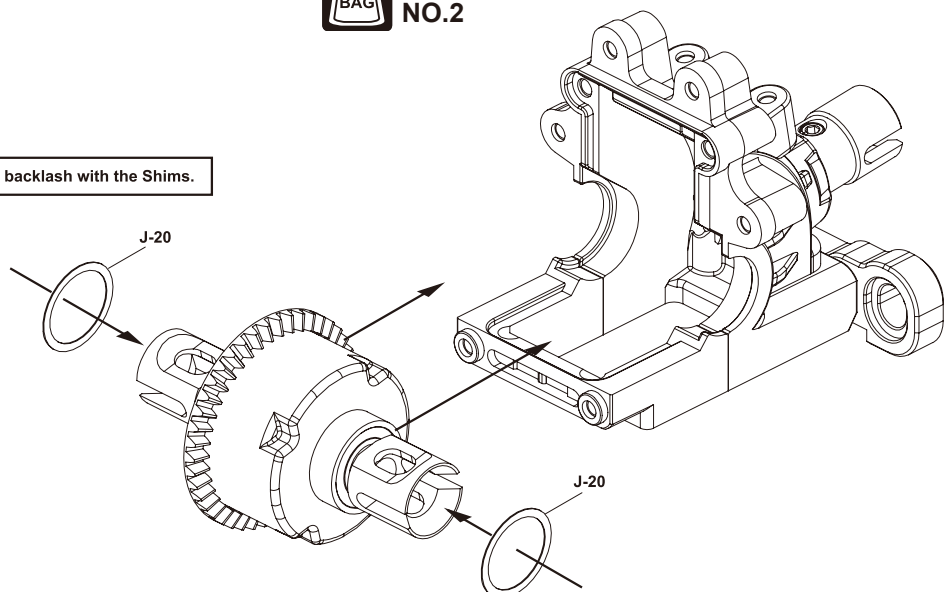
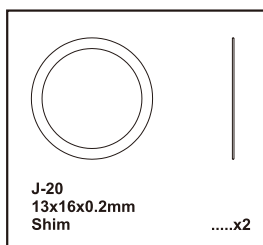


5 ASSEMBLY OF THE FRONT DIFFERENTIAL INTO GEAR CASE



NO.1
NO.2

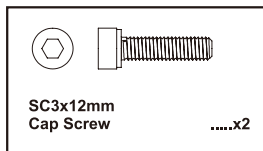
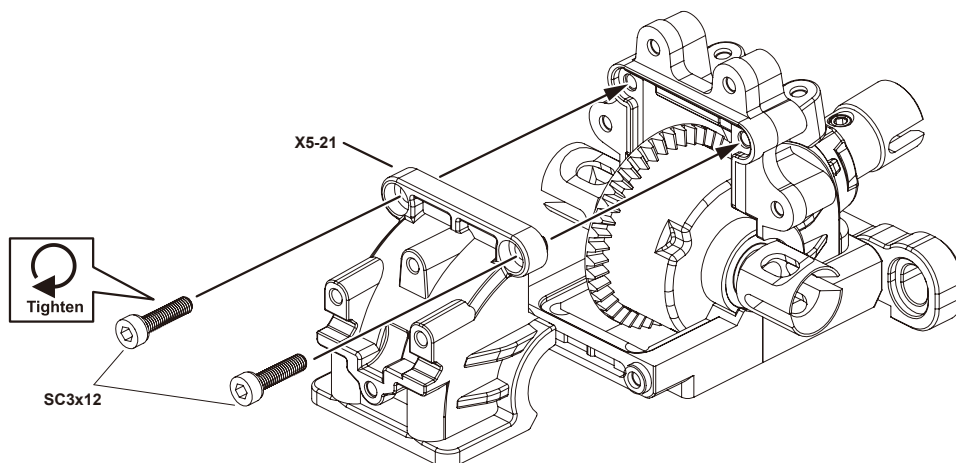
Adjust the backlash with the Shims.



6 ASSEMBLY OF THE FRONT GEAR CASE COVER



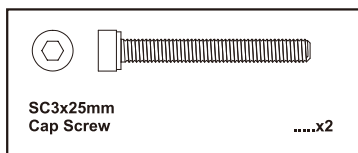
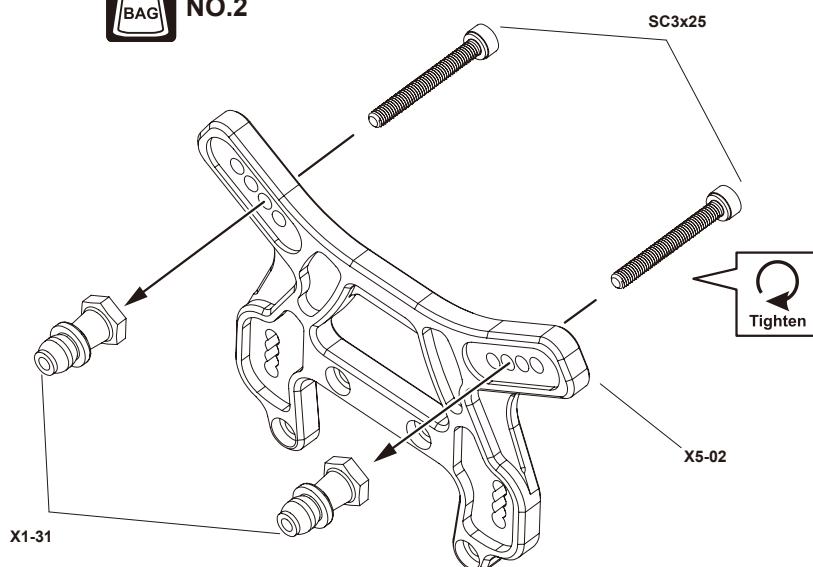
NO.2



7 ASSEMBLY OF THE FRONT SHOCK STAY



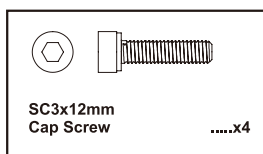
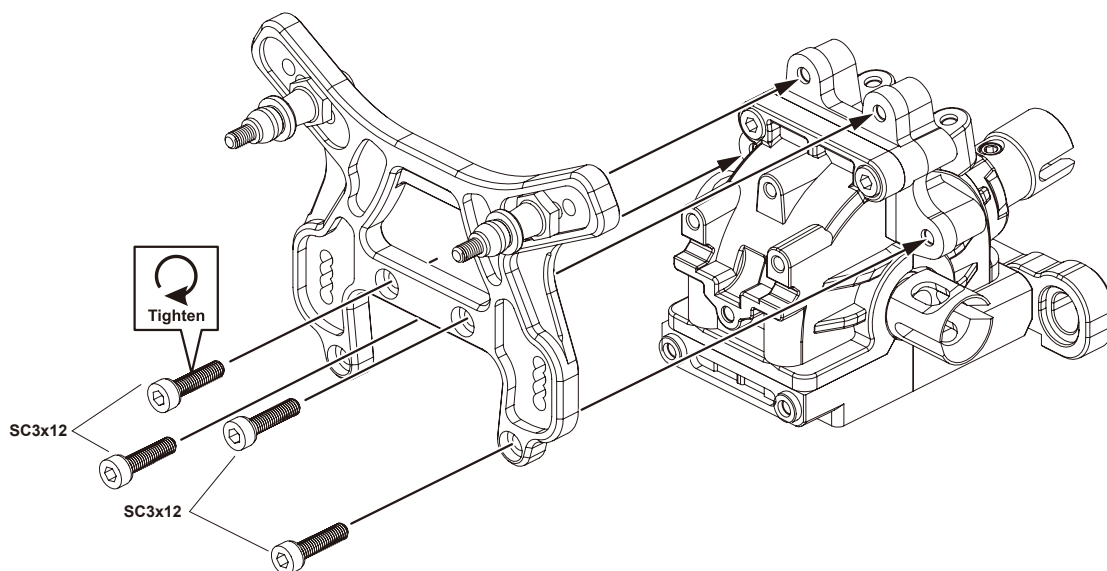
NO.2



8 ASSEMBLY OF THE FRONT SHOCK STAY ONTO GEAR CASE



NO.2



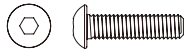
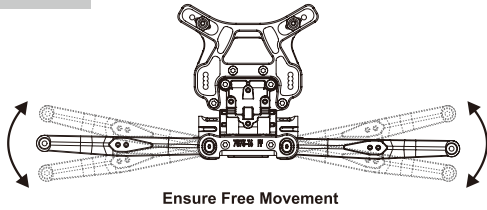
9 ASSEMBLY OF THE FRONT LOWER ARMS



NO.2

Assemble both right and left sides.

Step detail



SB3x12mm
Hex Screw

.....x2



X3-40
4x10mm
Round Head Set Screw

.....x2



Tighten

SB3x12

X5-05

X3-46

Initial setting

X3.6-07

X5-22



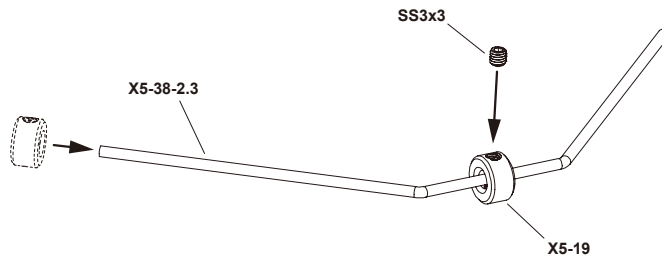
X3-46

10 ASSEMBLY OF THE FRONT STABILIZER ROD

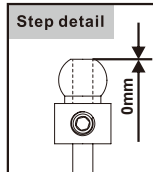
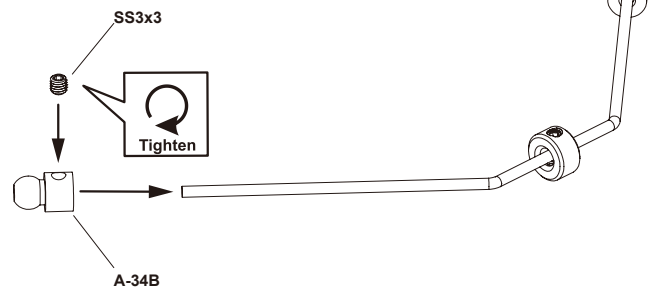


NO.2

Step 1



Step 2



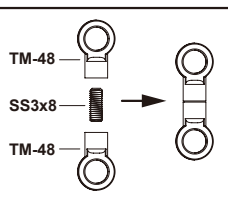
SS3x3mm
Set Screw

.....x3

11 ASSEMBLY OF THE FRONT STABILIZER ROD



NO.2



X5-10

A-41A

SS3x3

X5-21

SB3x8

SS3x5

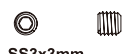


Do Not
Over Tighten



SB3x8mm
Hex Screw

.....x3



SS3x3mm
Set Screw

.....x2



SS3x5mm
Set Screw

.....x2



SS3x8mm
Set Screw

.....x2

12 ADJUSTABLE CASTER SET

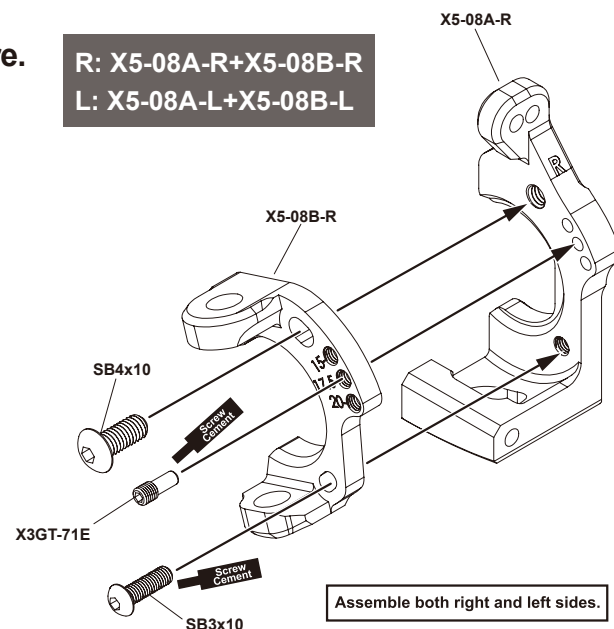
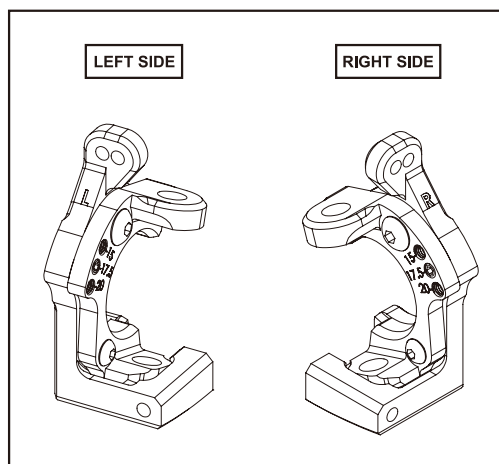
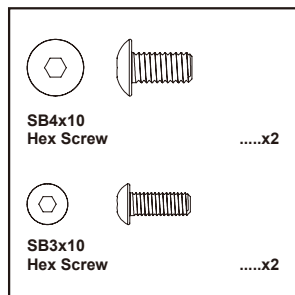


NO.2

Adjustable Caster Set installation, as shown in the figure.
(Take 17.5-degree caster angle on the right side as an example)

R: X5-08A-R+X5-08B-R

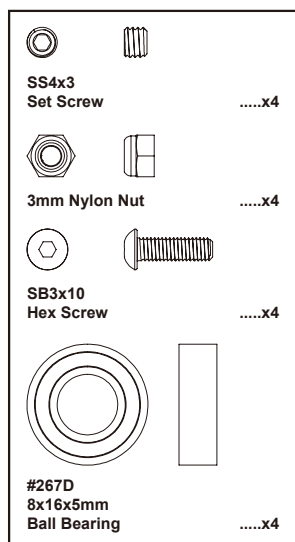
L: X5-08A-L+X5-08B-L



13 ASSEMBLY OF THE FRONT KNUCKLE ARMS

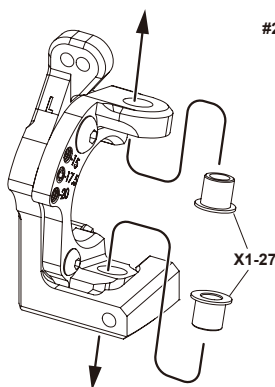


NO.2



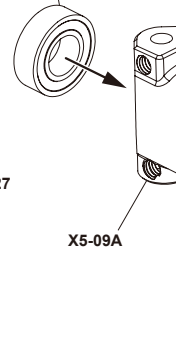
LEFT SIDE

Step 1



Step 2

#267D (Bearing 8X16X5)



SNN3

X5-09B

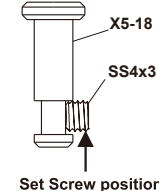
#267D
(Bearing 8X16X5)

Step 3

X5-18

X5-18

Step detail



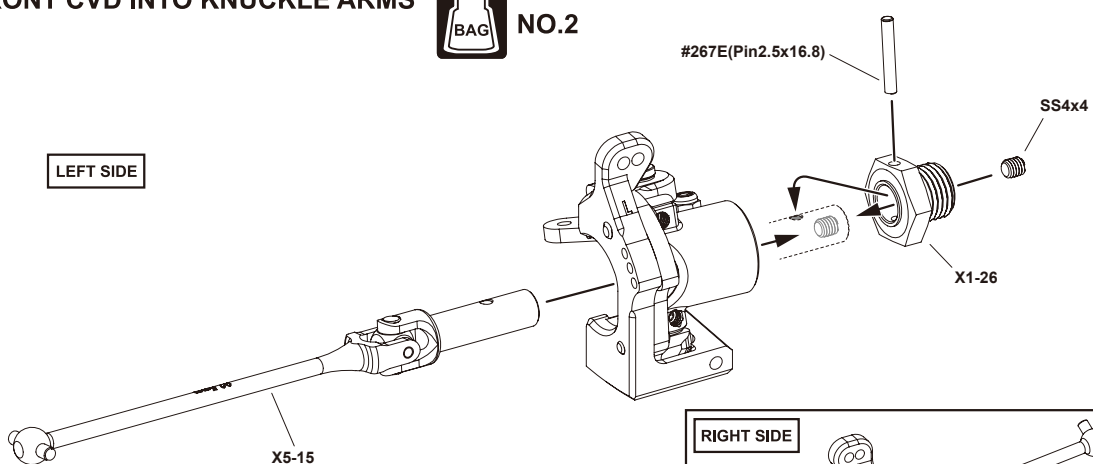
Assemble both right and left sides.

14 ASSEMBLY OF THE FRONT CVD INTO KNUCKLE ARMS



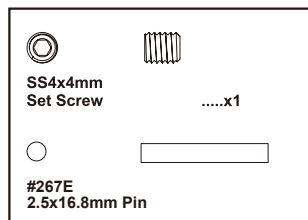
NO.2

LEFT SIDE



Assemble both right and left sides.

RIGHT SIDE



15 ASSEMBLY OF THE KNUCKLE ARMS ONTO FRONT LOWER ARMS



NO.2

R Right side

Assemble both right and left sides.



SNN3mm
Nylon Nut

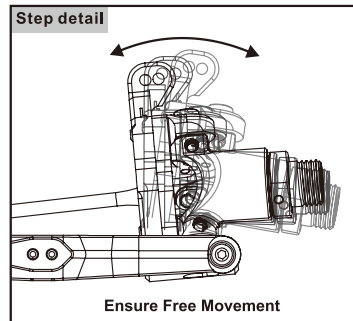
.....x2



X1S-19A



LEFT SIDE



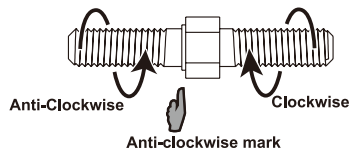
16 ASSEMBLY OF THE FRONT UPPER ARMS



NO.2

Step detail

Note the locking direction!



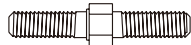
X3-32
7x12mm Ball

.....x2



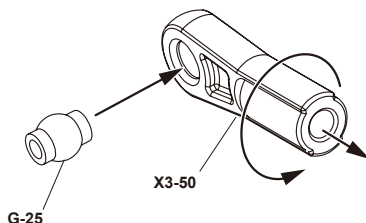
G-25
7mm Ball

.....x2



G-26
5x35mm Turnbuckle

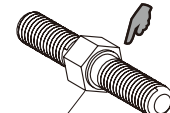
.....x2



G-25

X3-50

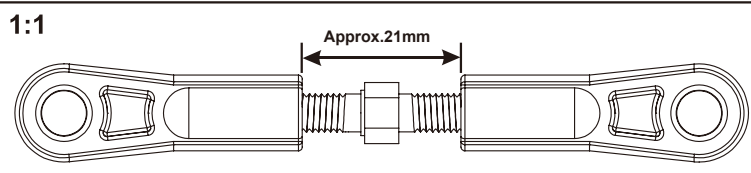
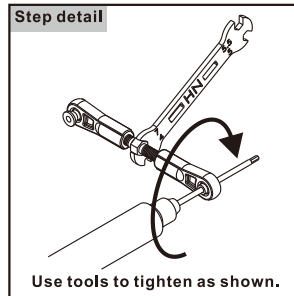
Anti-clockwise mark



G-26

x2

Step detail



1:1

Approx. 21mm

17 ASSEMBLY OF THE FRONT UPPER ARMS

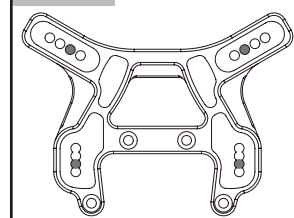


NO.2

R Right side

Assemble both right and left sides.

Step detail



SNN3mm
Nylon Nut

.....x4



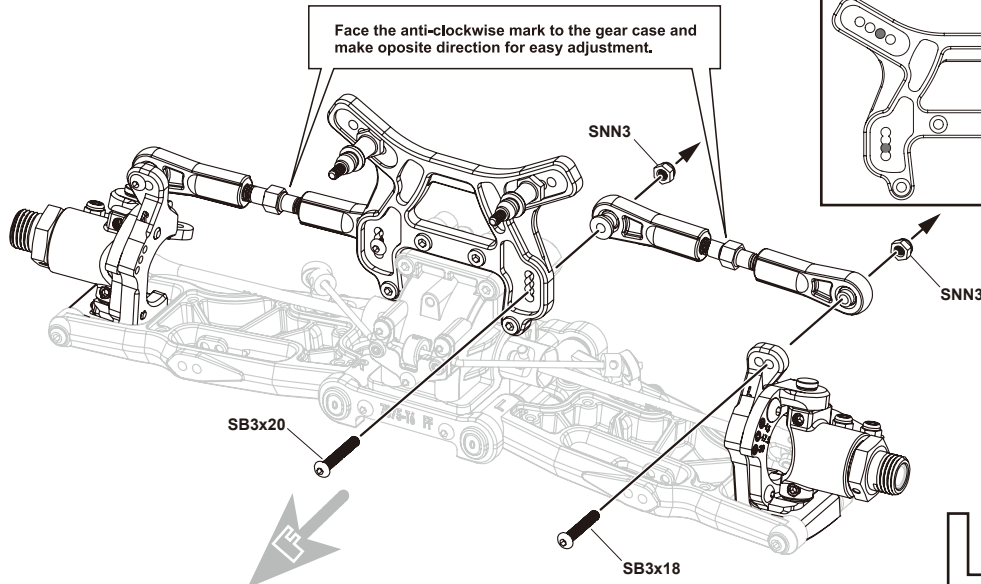
SB3x18mm
Hex Screw

.....x2



SB3x20mm
Hex Screw

.....x2

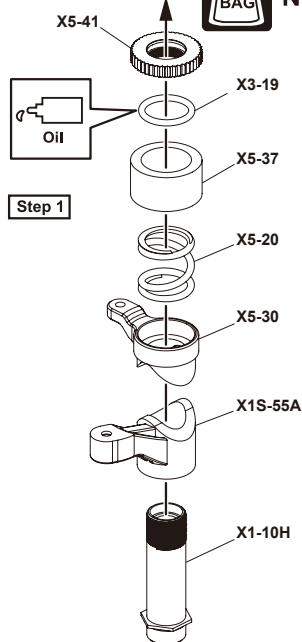
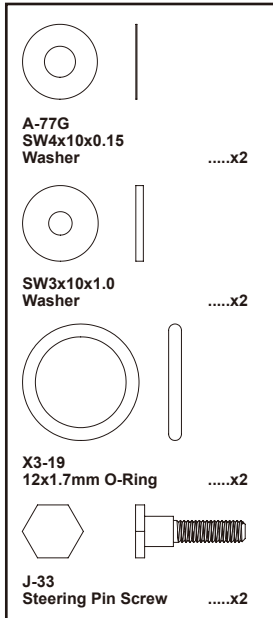


LEFT SIDE

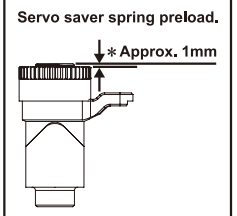
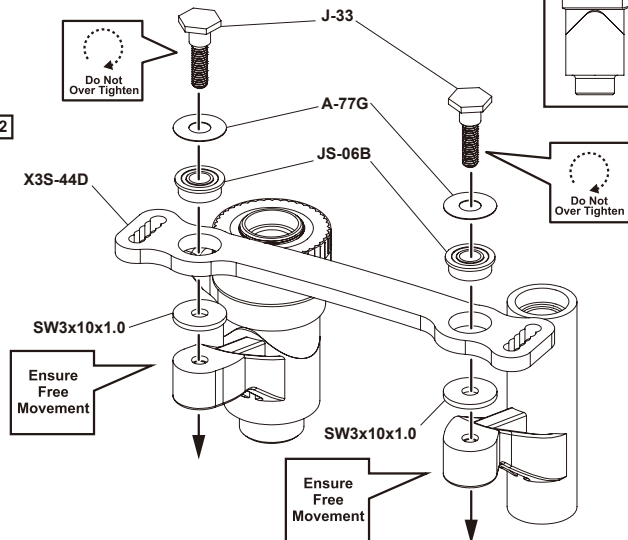
18 ASSEMBLY OF THE SERVO SAVER



NO.3



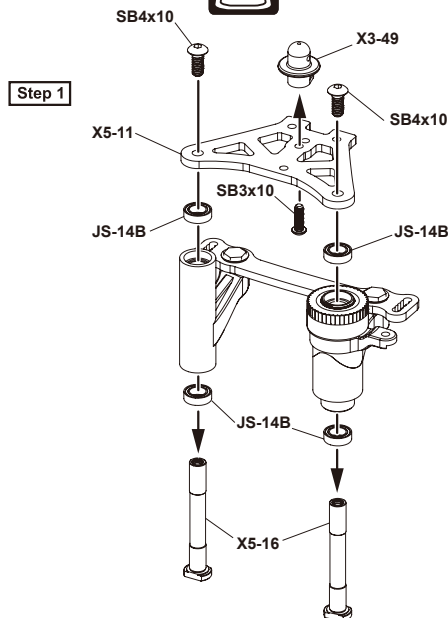
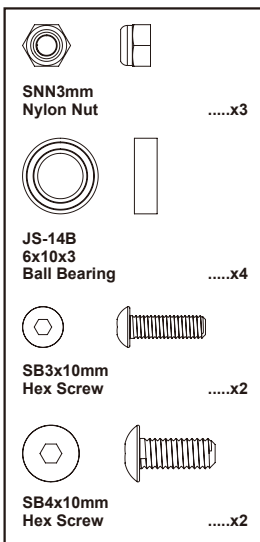
Step 2



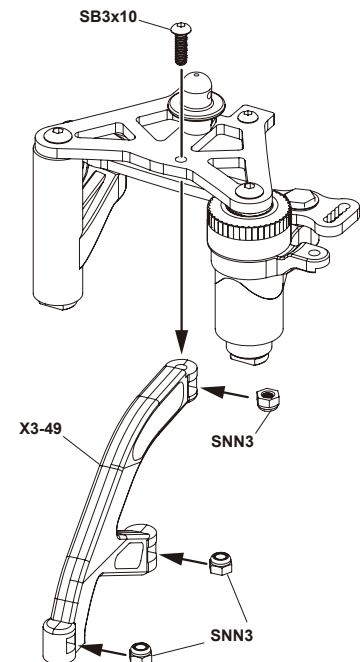
19 ASSEMBLY OF THE SERVO SAVER



NO.3



Step 2



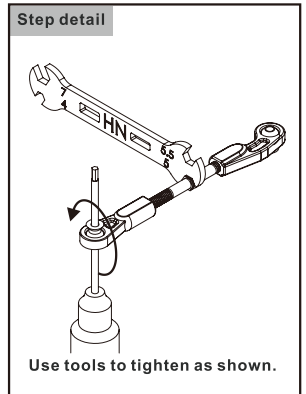
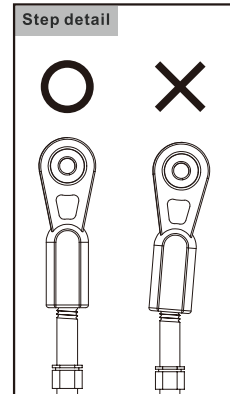
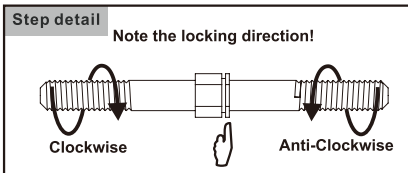
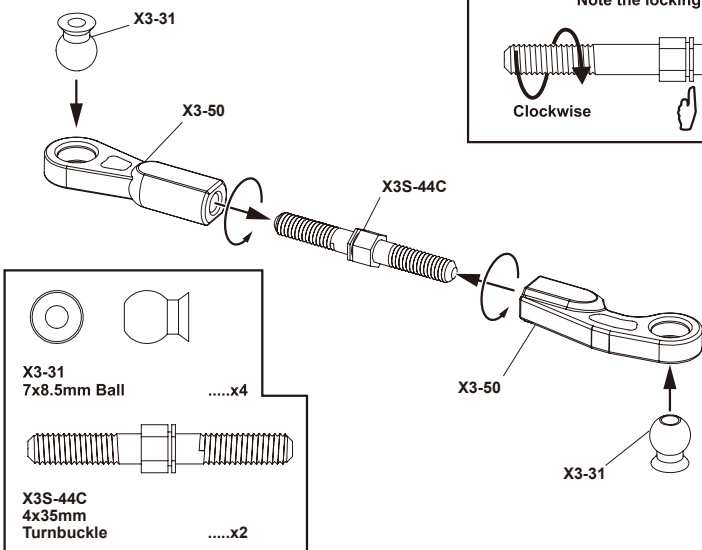
20 ASSEMBLY OF THE STEERING TIE-ROD



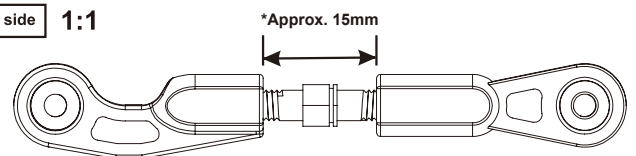
NO.3

Make two steering rods for left and right hand sides.

LEFT SIDE



Right side 1:1



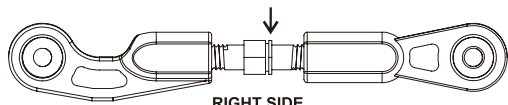
21 ASSEMBLY OF THE STEERING TIE-ROD



NO.3

Step detail

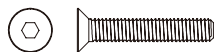
Face the anti-clockwise mark to the gear case and make oposite direction for easy adjustment.



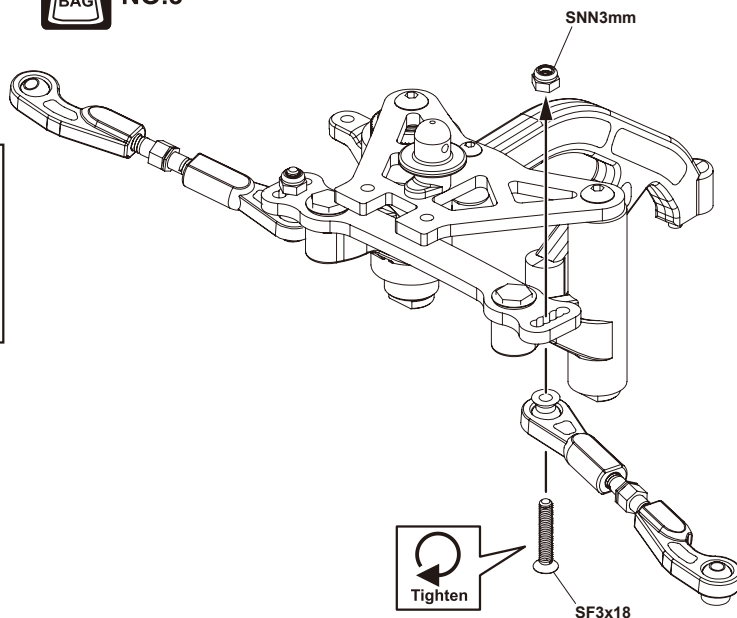
RIGHT SIDE



SNN3mm
Nylon Nutx2



SF3x18mm
Flat Head Hex Screwx2



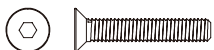
22 ASSEMBLY OF THE SERVO SAVER ONTO THE FRONT GEAR BOX



NO.3



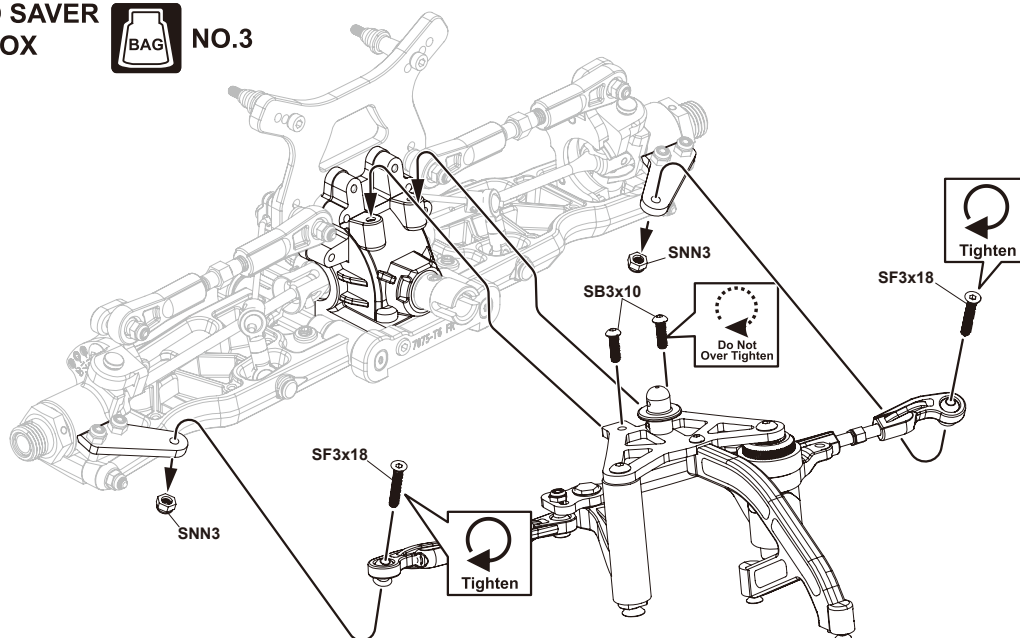
SNN3mm
Nylon Nutx2



SF3x18mm
Flat Head Hex Screwx2



SB3x10mm
Hex Screwx2



23 ASSEMBLY OH THE REAR PINION GEAR AND CVD SHAFT



NO.4



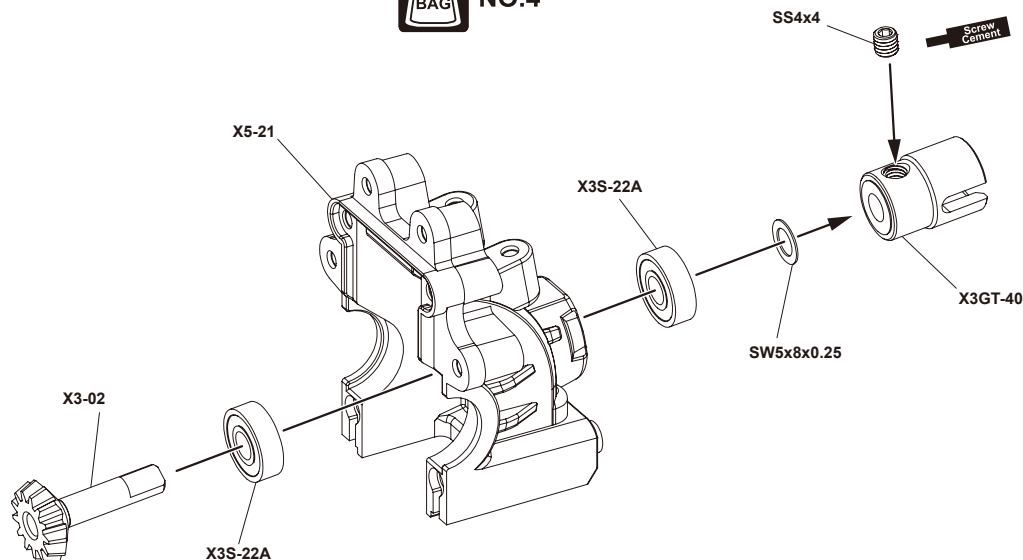
SS4x4mm
Set Screwx1



SW5x8x0.25mm
Washerx1



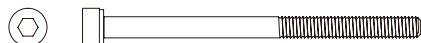
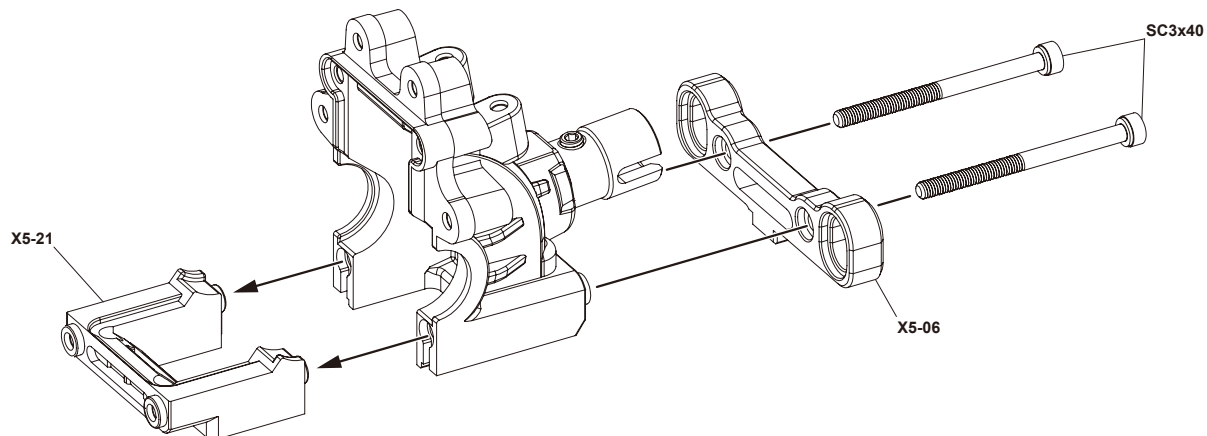
X3S-22A
5x13x4mm
Ball Beringx2



24 ASSEMBLY OF THE REAR GEAR CASE



NO.4



SC3x40mm
Cap Screw

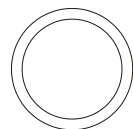
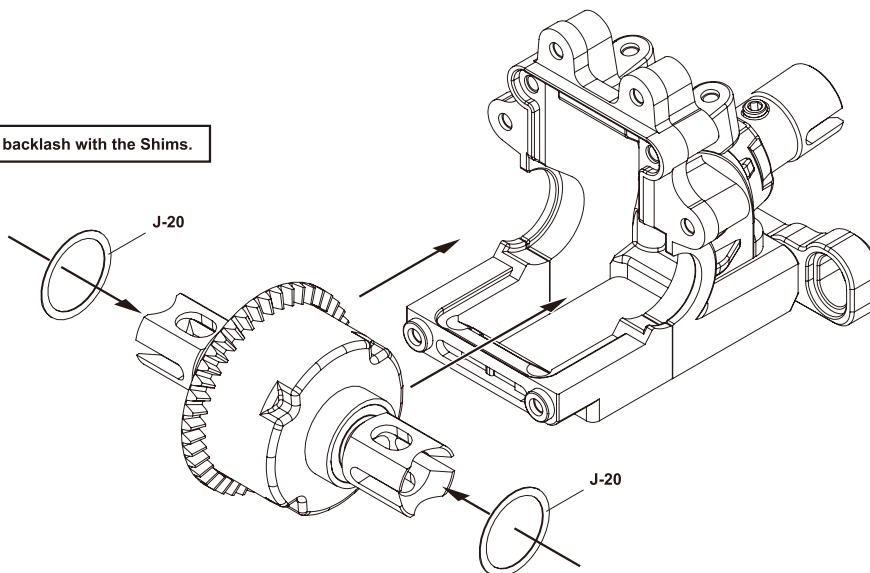
.....x2

25 ASSEMBLY OF THE REAR DIFFERENTIAL ONTO GEAR CASE



NO.4
NO.1

Adjust the backlash with the Shims.



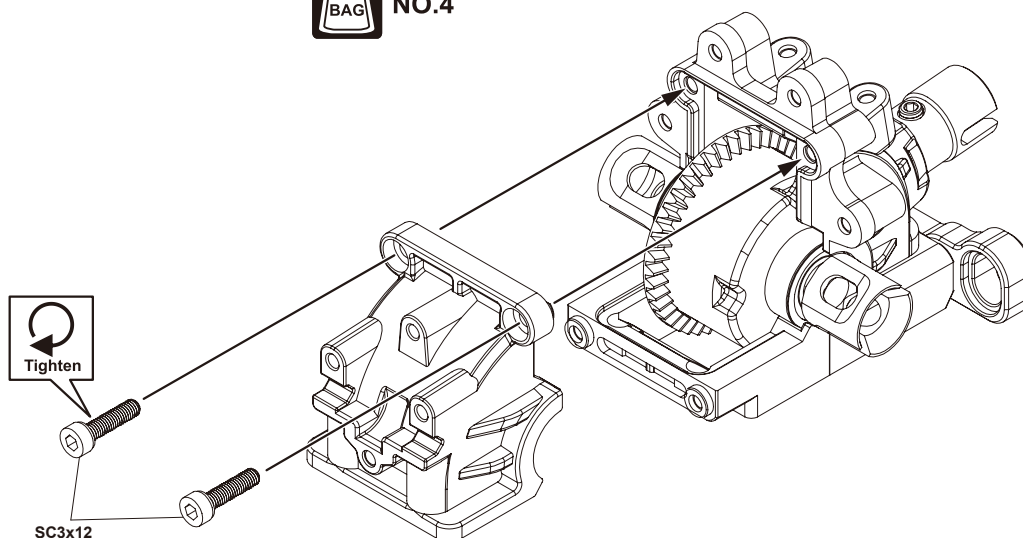
J-20
13x16x0.2mm
Shim

.....x2

26 ASSEMBLY OF THE REAR GEAR CASE COVER



NO.4



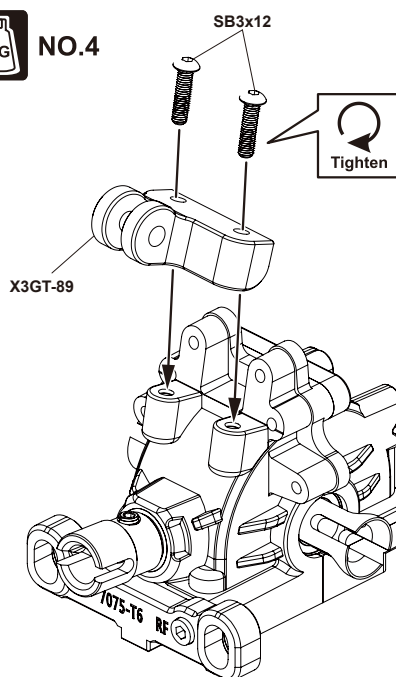
SC3x12mm
Cap Screw

.....x2

27 ASSEMBLY OF THE REAR BRACE MOUNT



NO.4

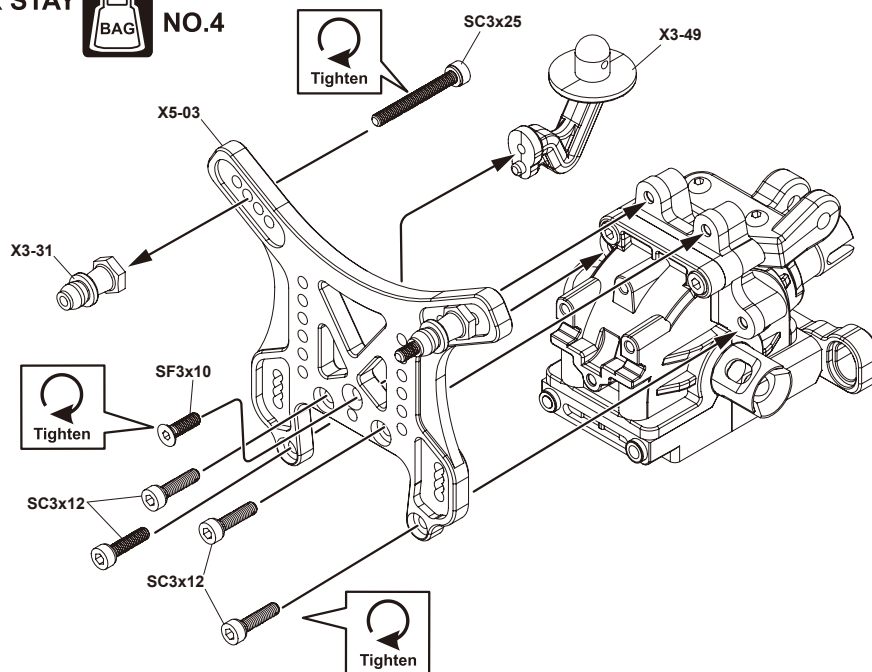


SB3x12mm
Hex Screwx2

28 ASSEMBLY OF THE REAR SHOCK STAY ONTO REAR GEAR CASE



NO.4



SF3x10mm
Flat Head Hex Screwx1



SC3x12mm
Cap Screwx4

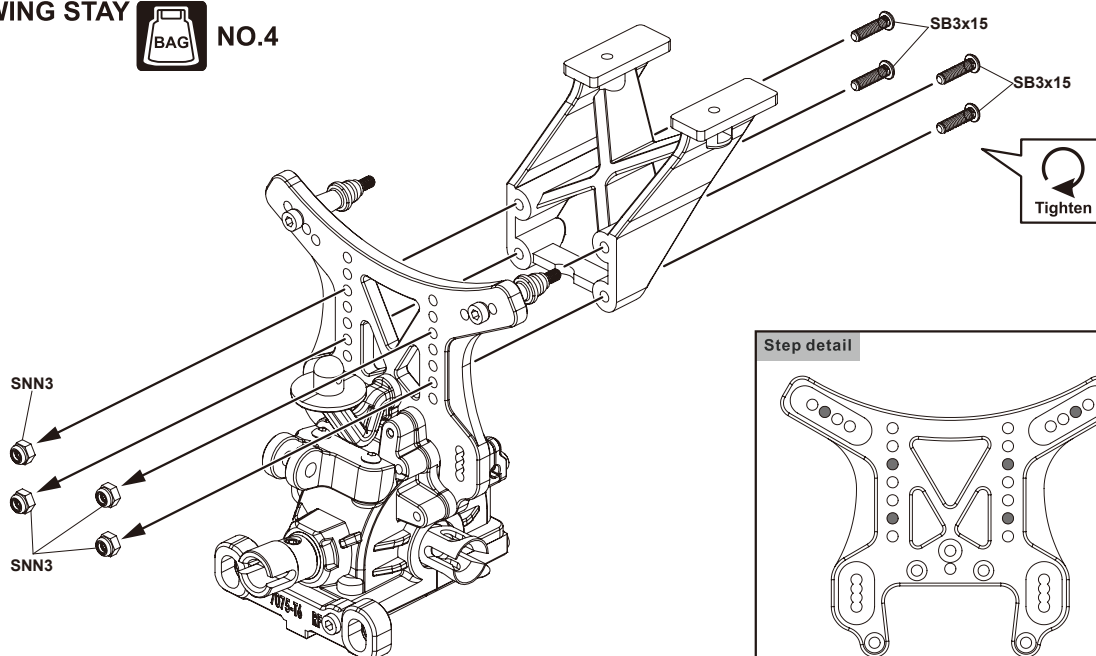


SC3x25mm
Cap Screwx2

29 ASSEMBLY OF THE WING STAY



NO.4



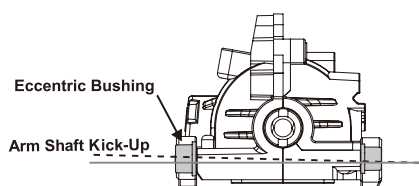
SNN3mm
Nylon Nutx4



SB3x15mm
Hex Screwx4

30 REAR KICK-UP (RF) & REAR TOE-IN (RR) SETTING

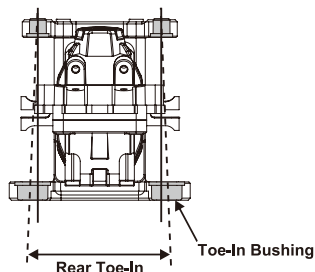
REAR KICK-UP SETTING



Rear Kick-Up	Characteristics
Less Rear Kick-Up	<ul style="list-style-type: none"> ● Absorb road shock less. ● Applicable flat surface.
More Rear Kick-Up	<ul style="list-style-type: none"> ● Absorb road shock more. ● Applicable uneven surface.

RF	Rear Kick-Up
3.3	2.8°
3	2.5°
2.5	2°
2	1.5°
2 (Reverse)	1°
2 (Reverse)	0.5°
2 (Reverse)	0°

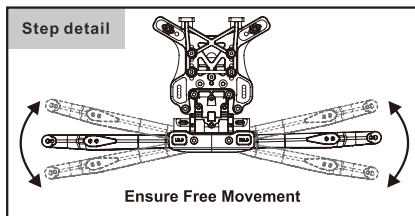
REAR TOE-IN SETTING



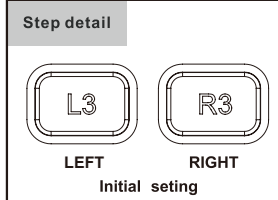
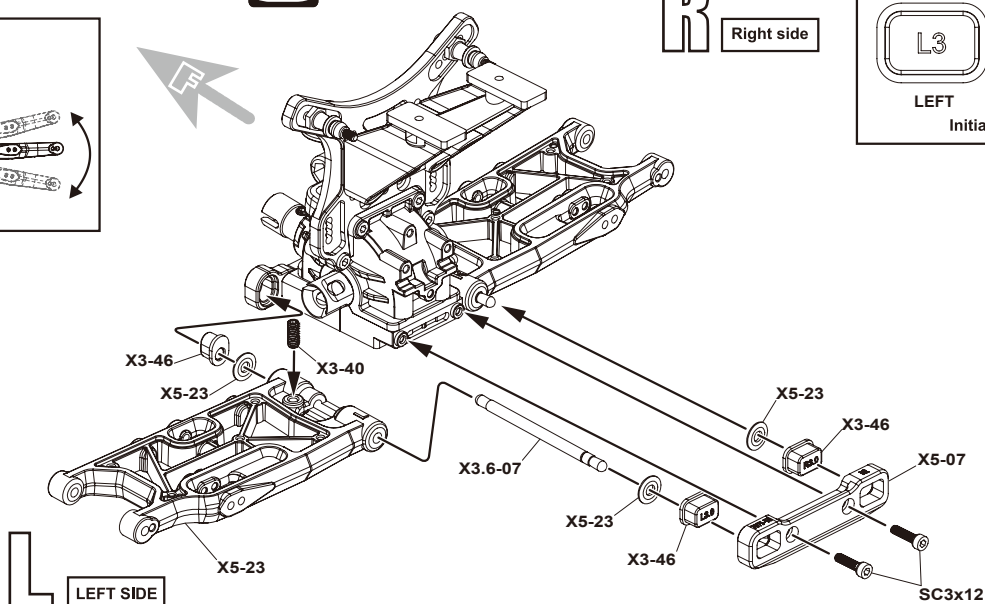
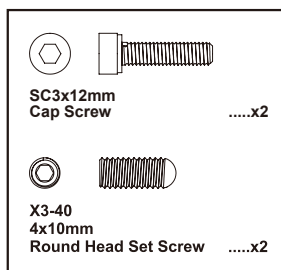
Rear Toe-In	Characteristics
Less Rear Toe-In	<ul style="list-style-type: none"> ● Reduced Grip. ● Oversteer tendency. ● Linear acceleration over the instability.
More Rear Toe-In	<ul style="list-style-type: none"> ● Increased grip. ● Understeer tendencies. ● Linear acceleration than the stability.

RR	Rear Toe-In
L3.5 R3.5	3.5°
L3.3 R3.3	3.3°
L3 R3	3°
L2.5 R2.5	2.5°
L2 R2	2°

31 ASSEMBLY OF THE REAR LOWER ARMS



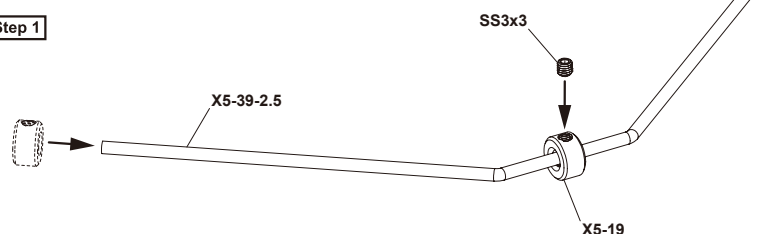
Assemble both right and left side.



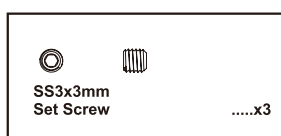
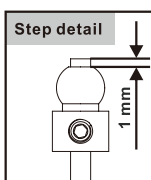
32 ASSEMBLY OF THE REAR STABILIZER ROD



Step 1



Step 2

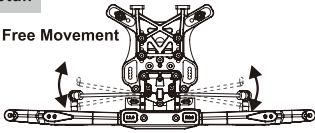


33 ASSEMBLY OF THE REAR STABILIZER

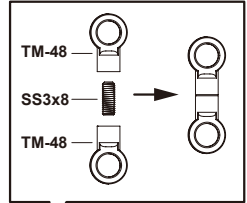
BAG NO.4

Step detail

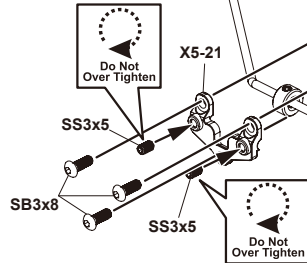
Ensure Free Movement



L LEFT SIDE



- SB3x8mm Hex Screwx3
- SS3x3mm Set Screwx2
- SS3x5mm Set Screwx2
- SS3x8mm Set Screwx2



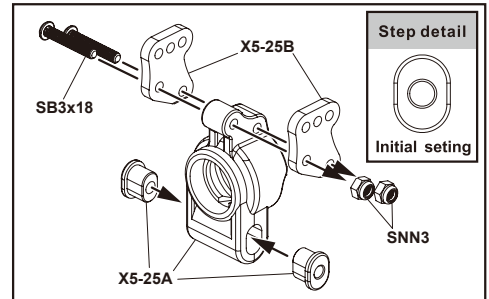
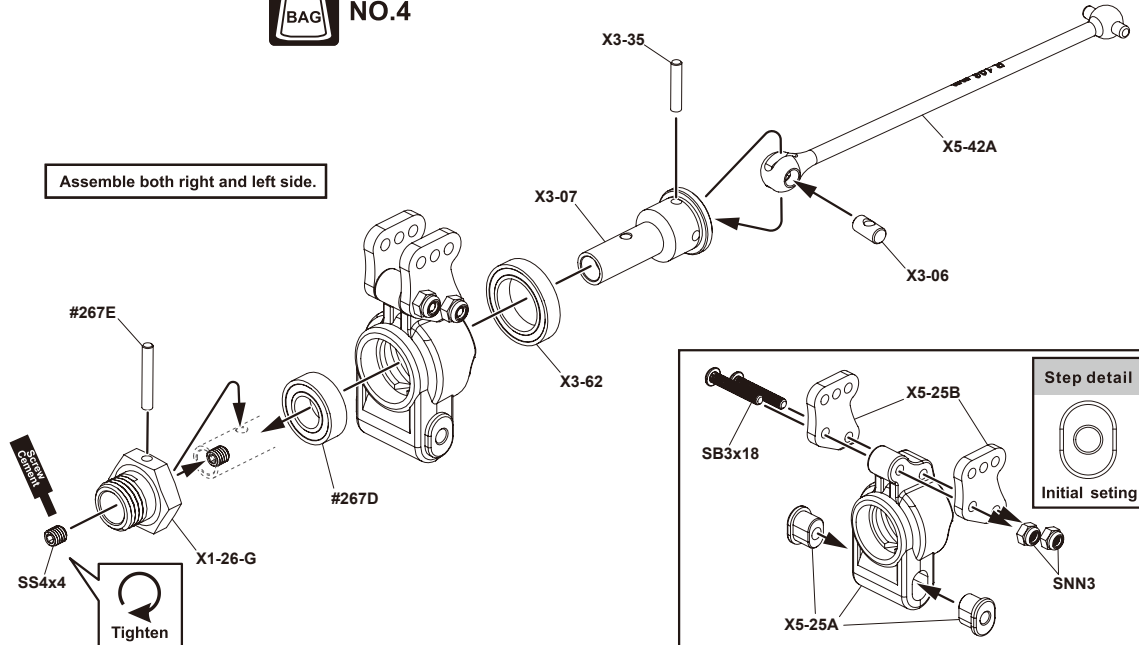
R Right side

34 ASSEMBLY OF THE REAR WHEEL HUBS

BAG NO.4

- SNN3mm Nylon Nutx4
- SB3x18mm Hex Screwx4
- X3-35 2.5x12.8mm Pinx2
滾針
- #267E 2.5x16.8mm Pinx2
滾針
- 4x4mm Set Screwx2
止付螺絲

Assemble both right and left side.

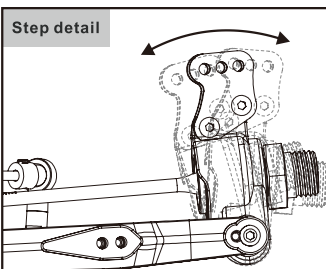


35 ASSEMBLY OF THE REAR SUSPENSION ARMS

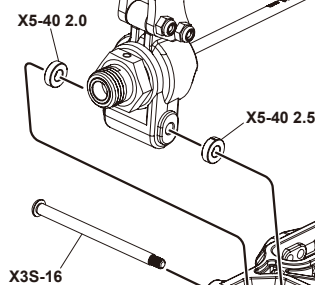
BAG NO.4

Step detail

Ensure Free Movement



L LEFT SIDE



Check screw direction.

Assemble both right and left side.

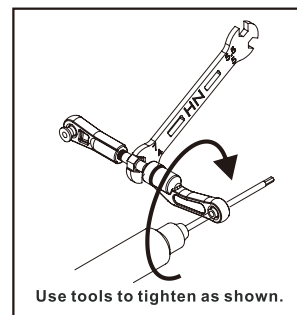
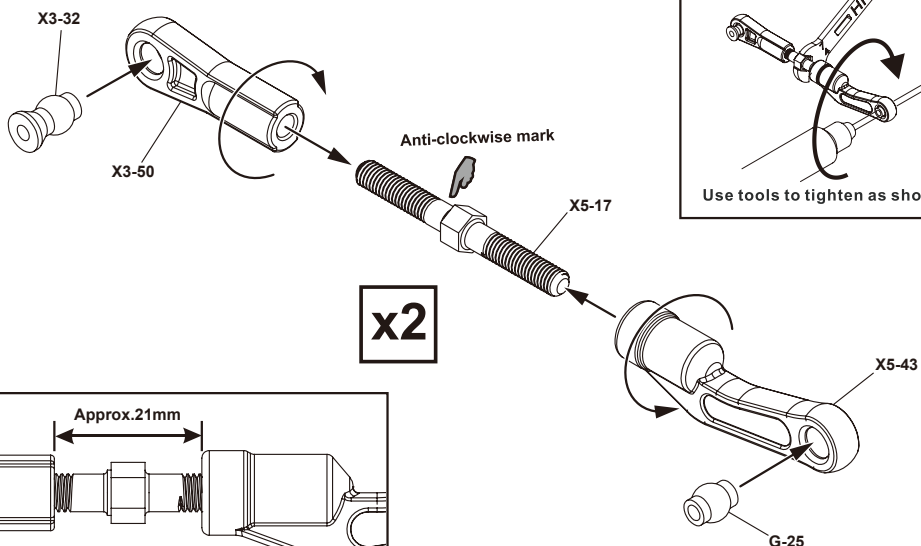
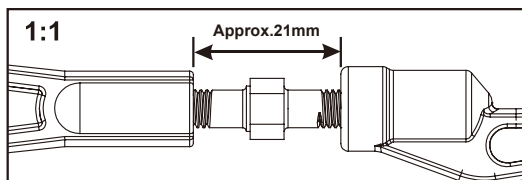
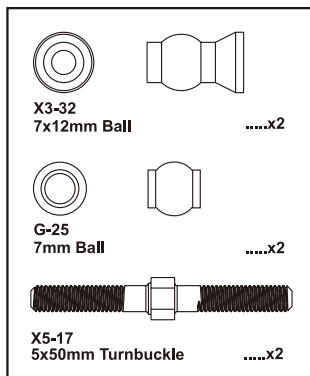
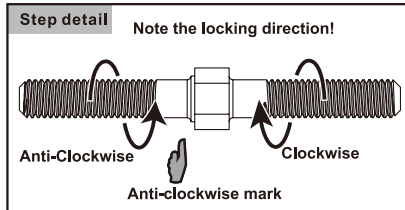
- SNN3mm Nylon Nutx2

R Right side

36 ASSEMBLY OF THE REAR UPPER ARMS



NO.4



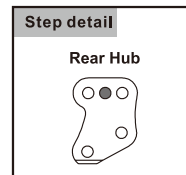
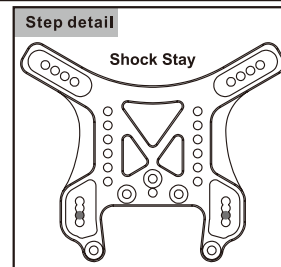
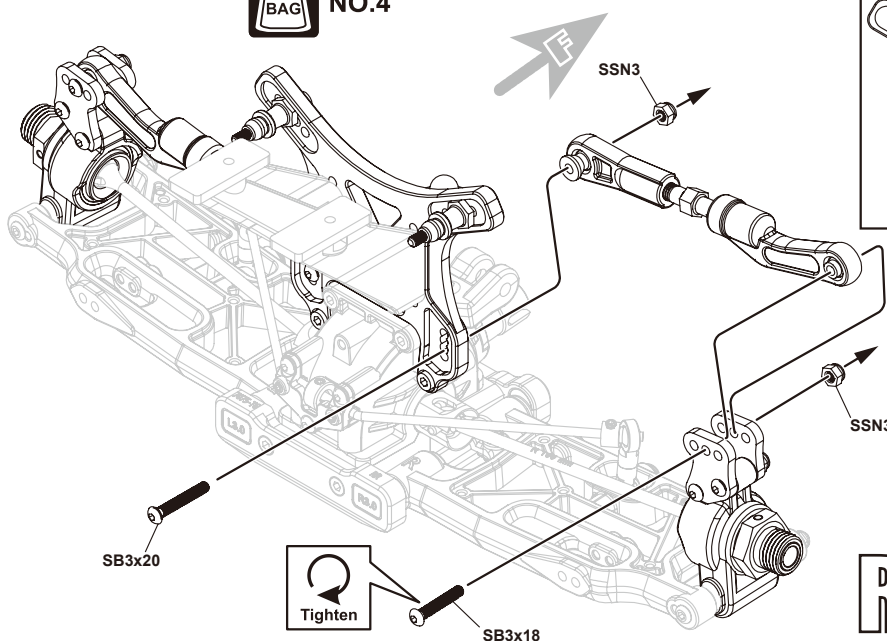
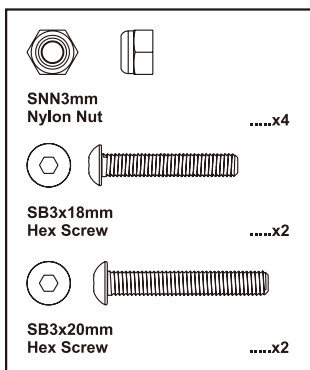
37 ASSEMBLY OF THE REAR UPPER ARMS



NO.4

L LEFT SIDE

Assemble both right and left side.



R Right side

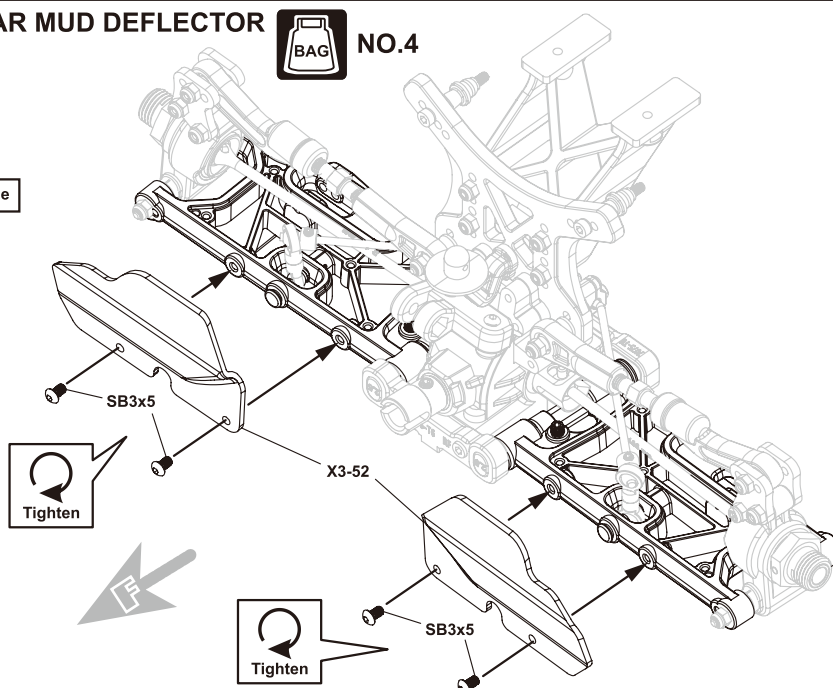
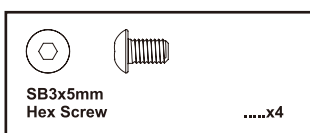
38 ASSEMBLY OF THE REAR MUD DEFLECTOR



NO.4

R Right side

Assemble both right and left side.



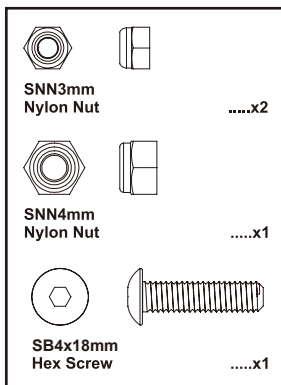
L LEFT SIDE

39 ASSEMBLY OF THE REAR CENTER BRACE

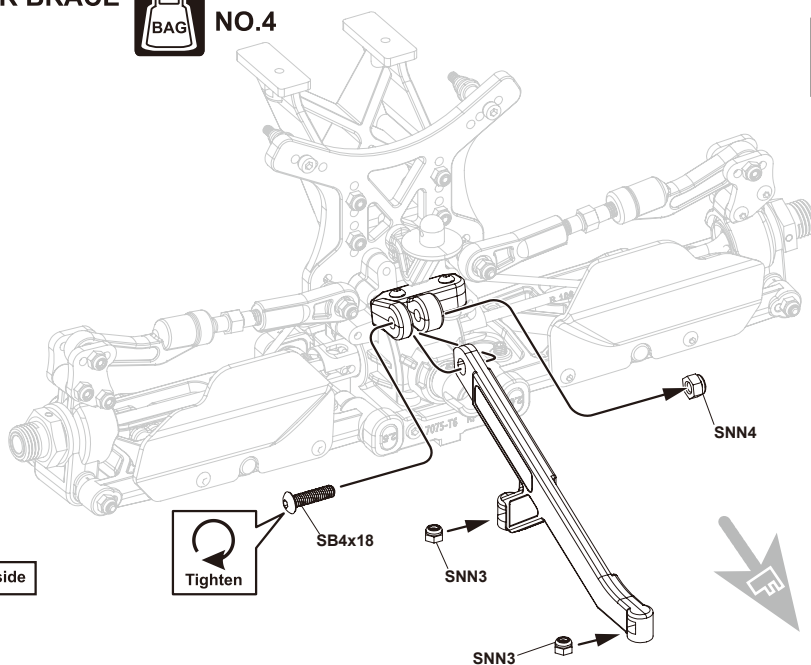


NO.4

L LEFT SIDE



R Right side

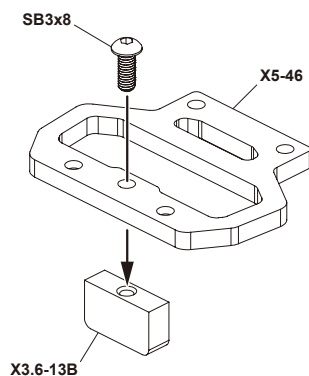


40 ASSEMBLY OF THE TOP CENTER DIFF MOUNT

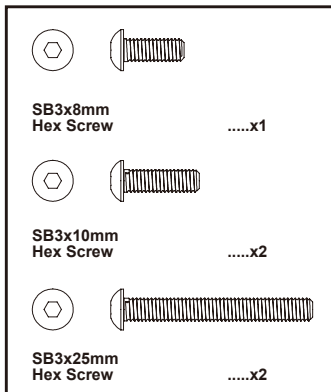
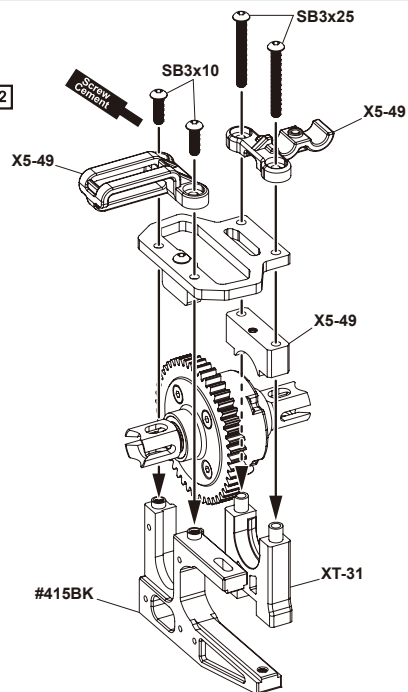


NO.5

Step 1



Step 2

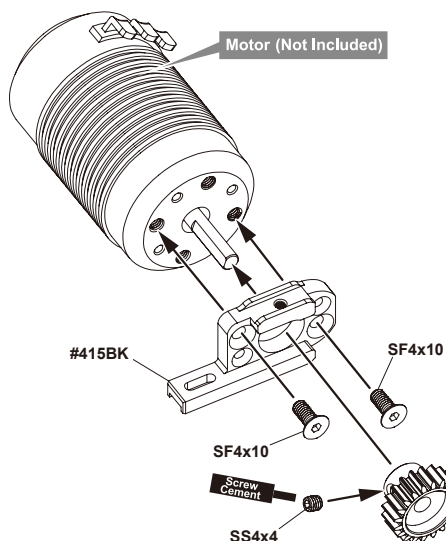


41 ASSEMBLY OF THE BOTTOM CENTER DIFF MOUNT & THE SPUR GEAR

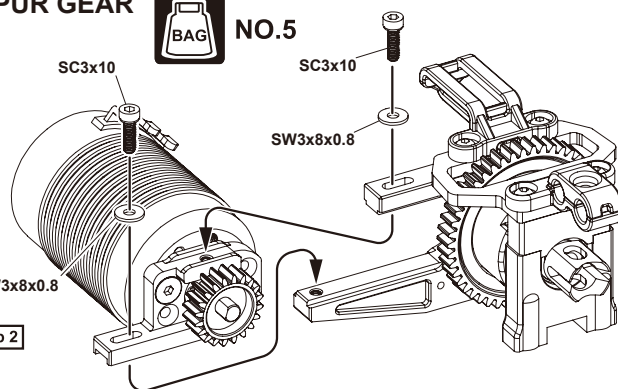


NO.5

Step 1



Step 2

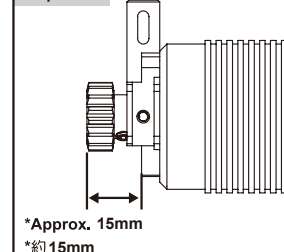


Option:

#397-13 (13T)
#397-14 (14T)
#397-15 (15T)
#397-16 (17T)
#397-18 (18T)

0 10 20 30 mm

Step detail

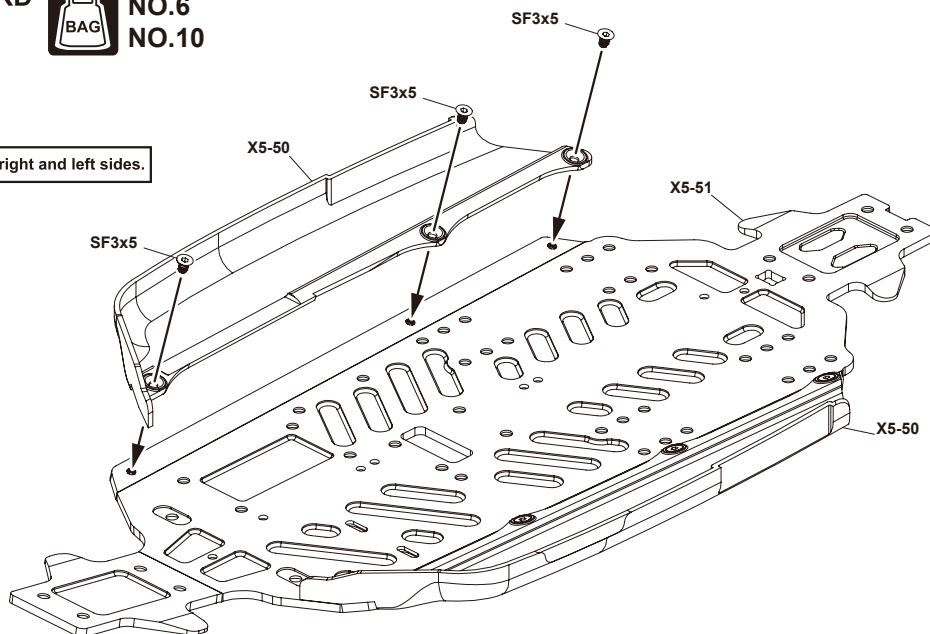


42 ASSEMBLY OF THE SIDE GUARD



NO.6
NO.10

Assemble both right and left sides.



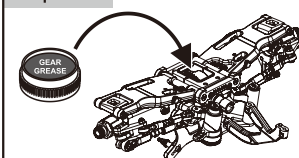
SF3x5mm
Flat Head Hex ScrewX7

43 ASSEMBLY OF THE FRONT GEAR CASE ONTO CHASSIS



NO.2
NO.10

Step detail



Fill the right amount of grease.



SF3x10mm
Flat Head Hex ScrewX2



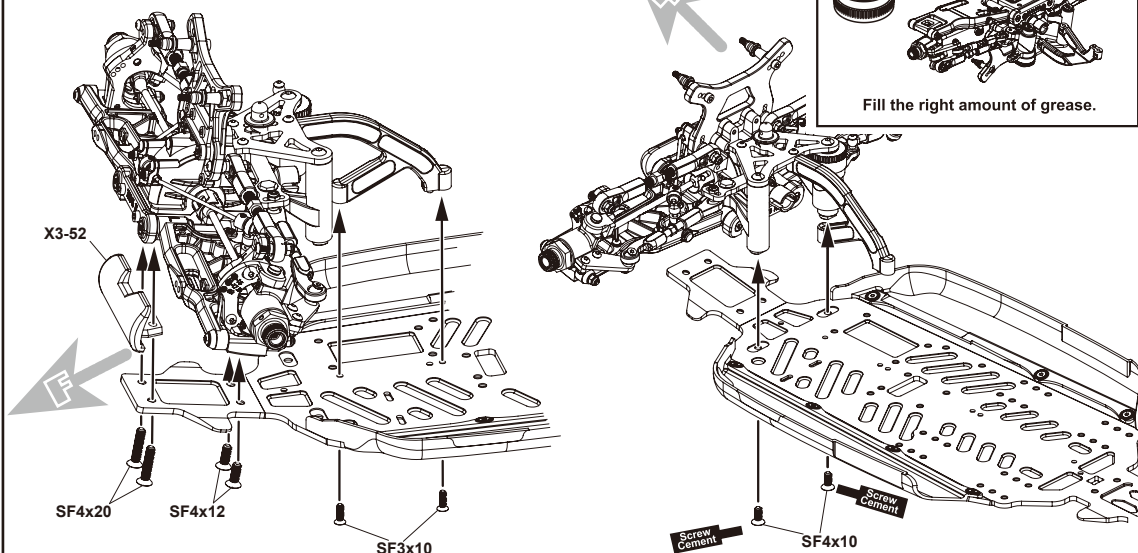
SF4x10mm
Flat Head Hex ScrewX2



SF4x12mm
Flat Head Hex ScrewX2



SF4x20mm
Flat Head Hex ScrewX2

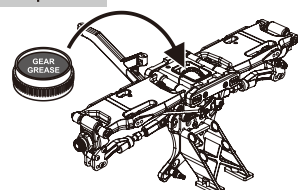


44 ASSEMBLY OF THE REAR GEAR CASE ONTO CHASSIS



NO.4
NO.10

Step detail



Fill the right amount of grease.



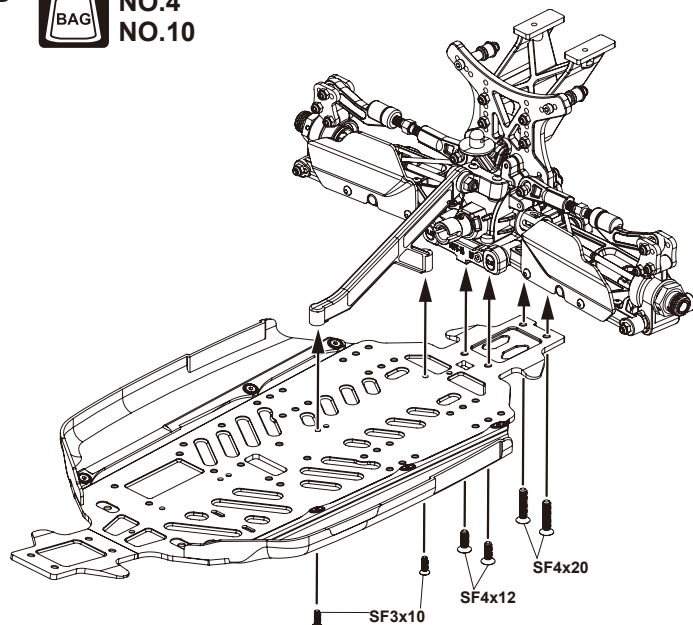
SF3x10mm
Flat Head Hex ScrewX2



SF4x12mm
Flat Head Hex ScrewX2



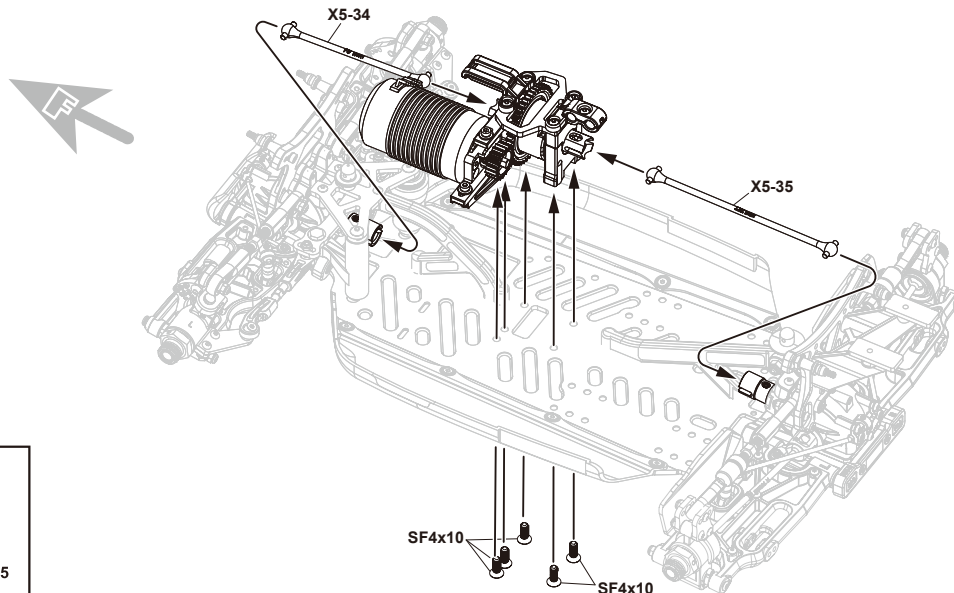
SF4x20mm
Flat Head Hex ScrewX2



45 ASSEMBLY OF THE CENTER DIFF. ONTO CHASSIS



NO.5
NO.10



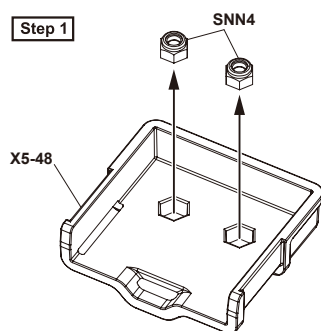
SF4x10mm
Flat Head Hex Screwx5

46 ASSEMBLY OF THE BATTERY CASES ONTO THE CHASSIS



NO.7
NO.10

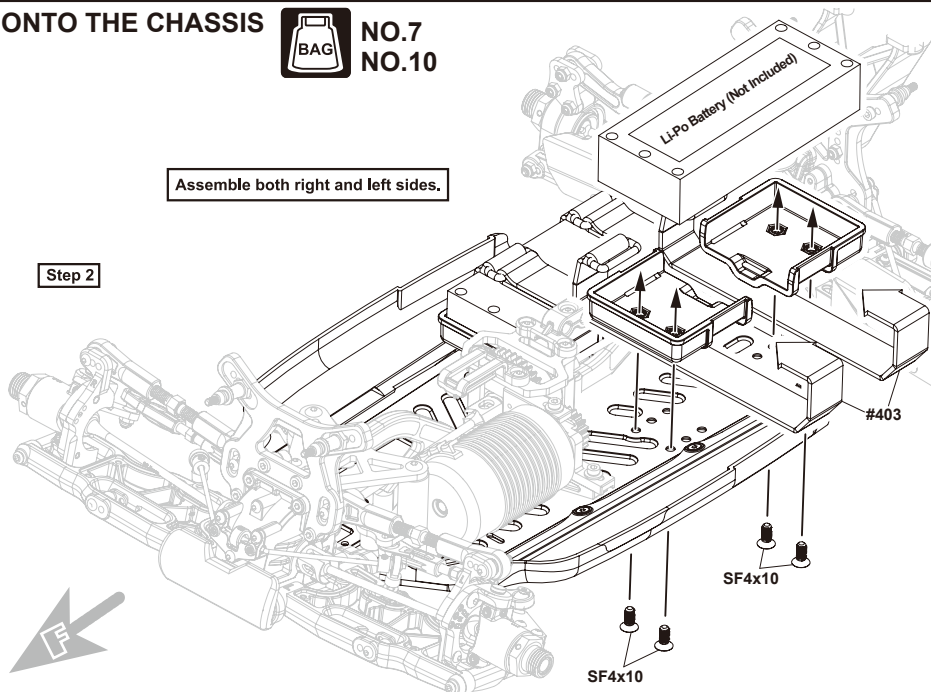
Step 1



X4

Assemble both right and left sides.

Step 2



SF4x10mm
Flat Head Hex Screwx8



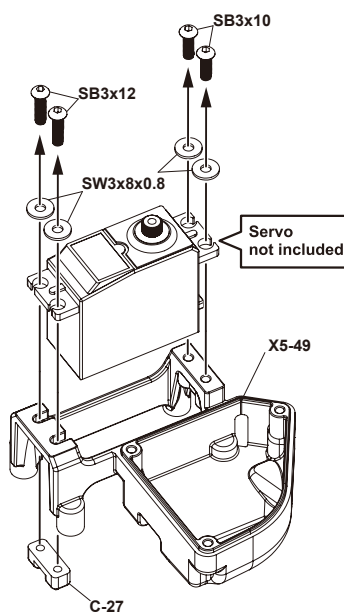
SNN4mm
Nylon Nutx8

47 ASSEMBLY OF THE STEERING SERVO ONTO SERVO BASE



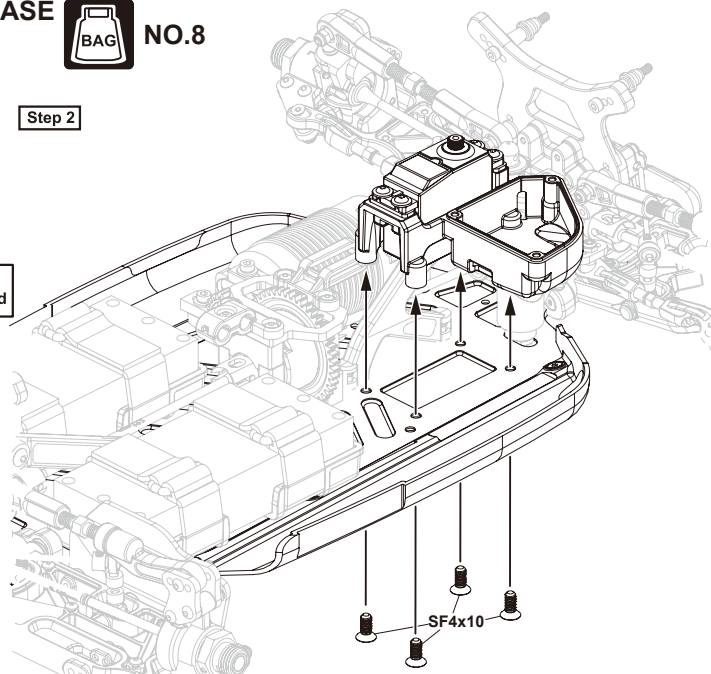
NO.8

Step 1



Servo
not included

Step 2



SW3x8x0.8mm
Washerx4



SB3x10mm
Hex Screwx2



SB3x12mm
Hex Screwx2

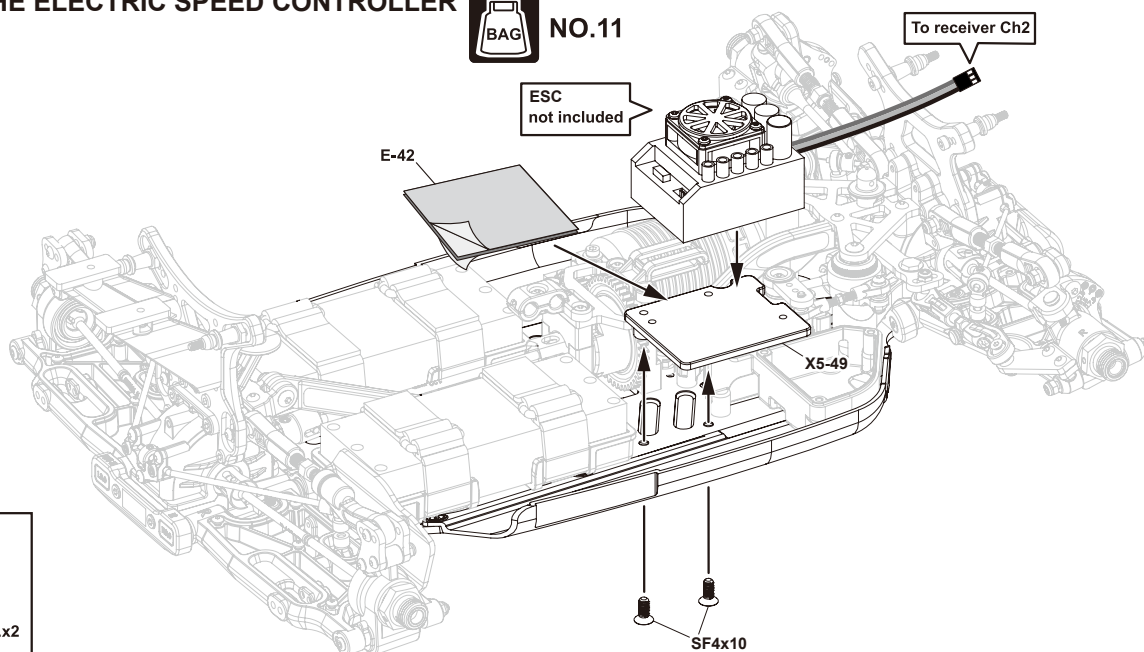


SF4x10mm
Flat Head Hex Screwx4

48 ASSEMBLY OF THE ELECTRIC SPEED CONTROLLER



NO.11



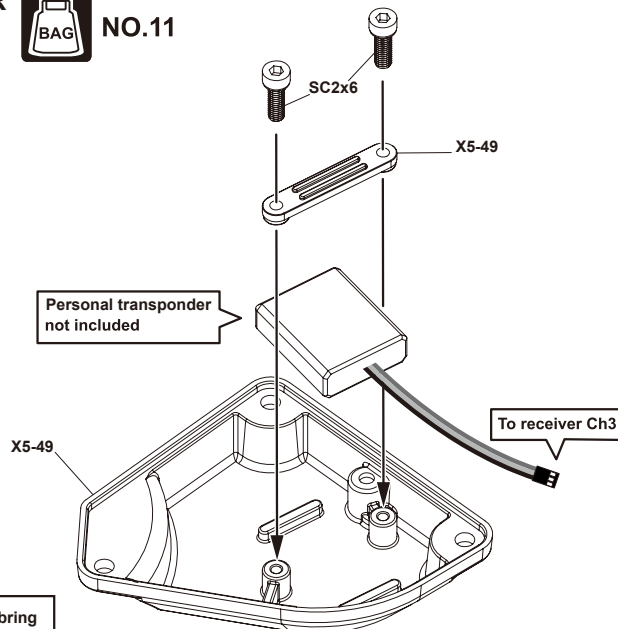
SF4x10mm
Hex Screw

.....x2

49 ASSEMBLY OF THE PERSONAL TRANSPONDER



NO.11



SC2x6mm
Cap Screw

.....x2

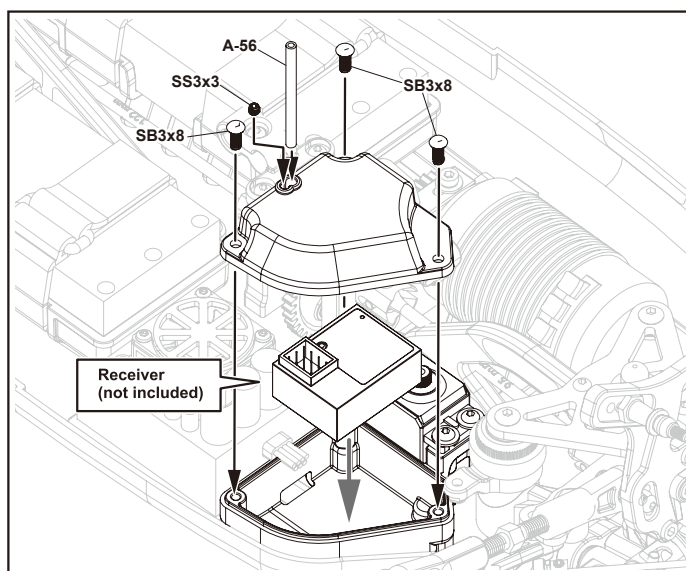


If participating in a competition, bring
your own transponder.

50 ASSEMBLY OF THE RECEIVER INTO RADIO CASE



NO.11



SS3x3mm
Set Screw

.....x1



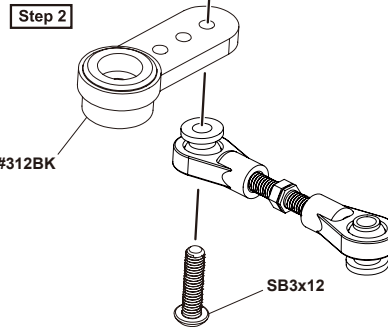
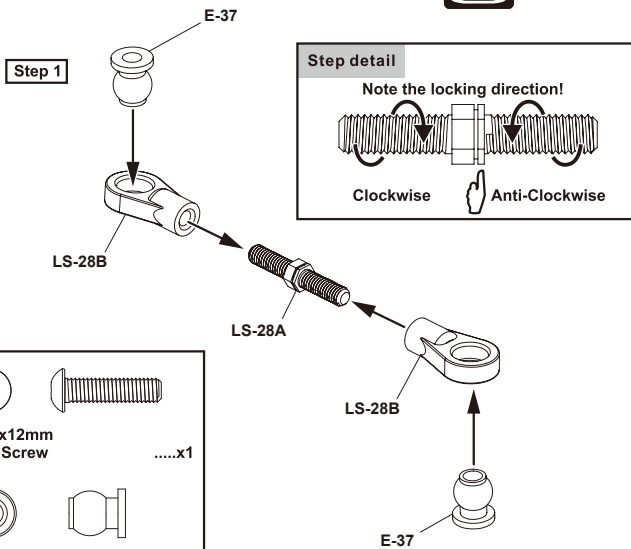
SB3x8mm
Hex Screw

.....x3

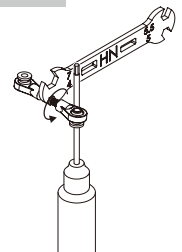
51 ASSEMBLY OF THE STEERING ROD



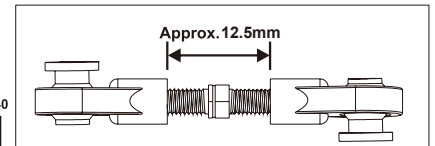
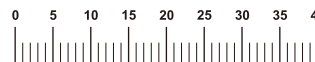
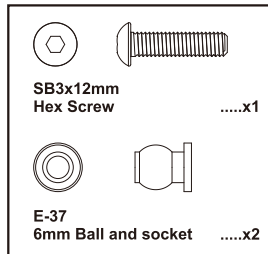
NO.8



Step detail



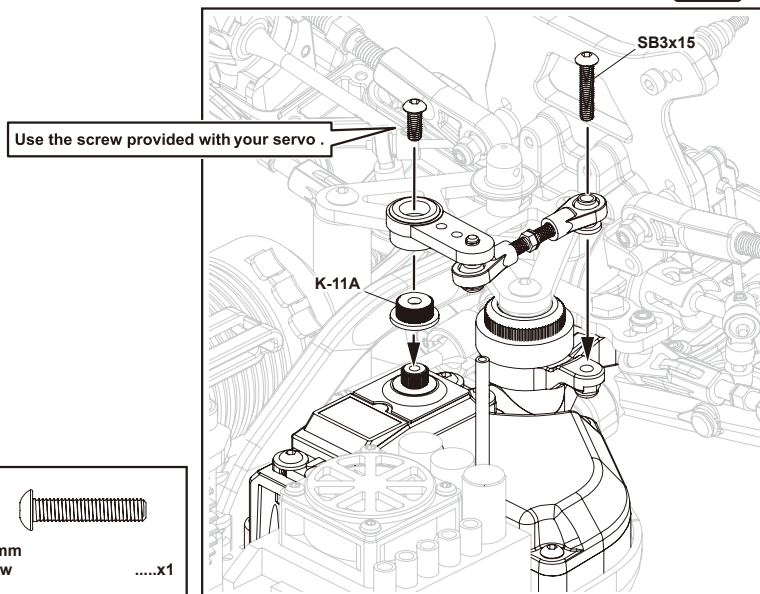
Use tools to tighten as shown.



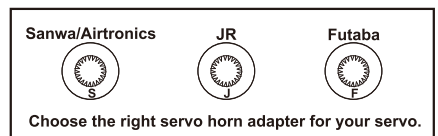
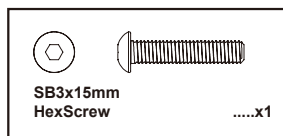
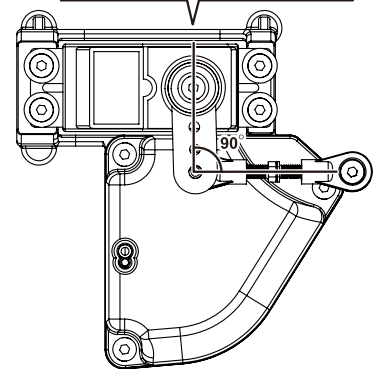
52 ASSEMBLY OF THE STEERING SERVO AND RADIO TRAY



NO.8



Note orientation of servo arm when servo is at neutral.

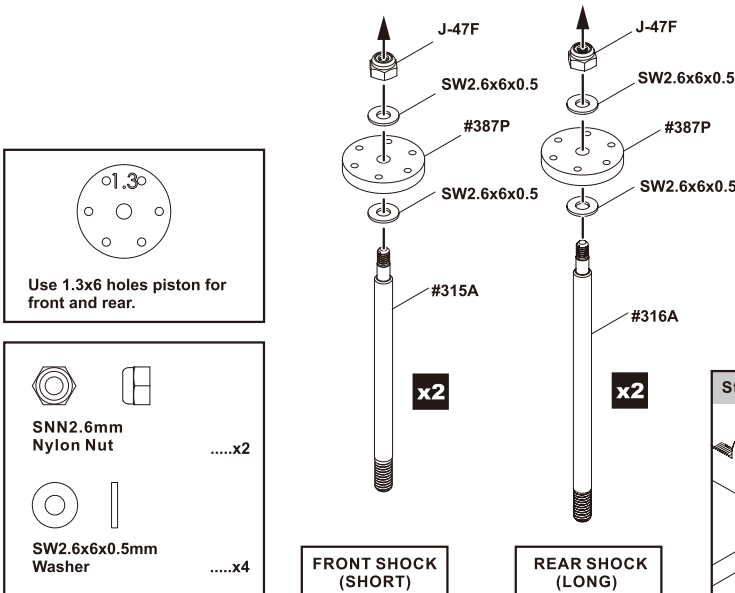


53 ASSEMBLY OF THE SHOCK SHAFTS



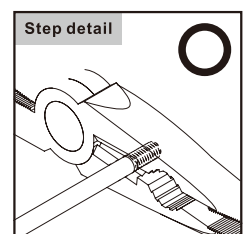
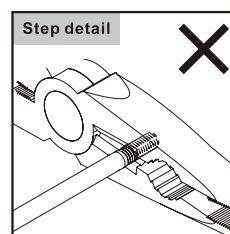
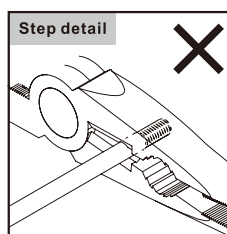
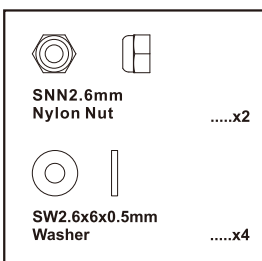
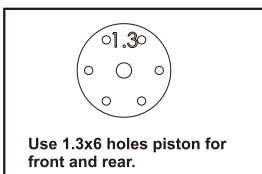
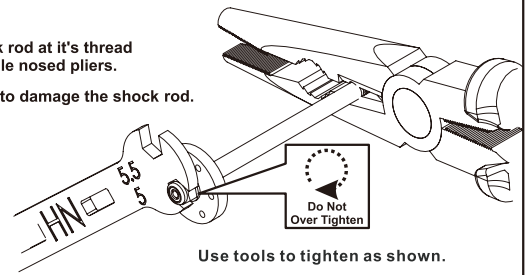
NO.9

Assemble both left and right sides.



Step detail

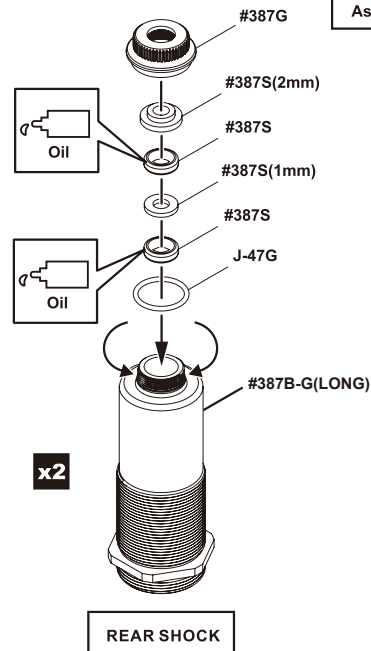
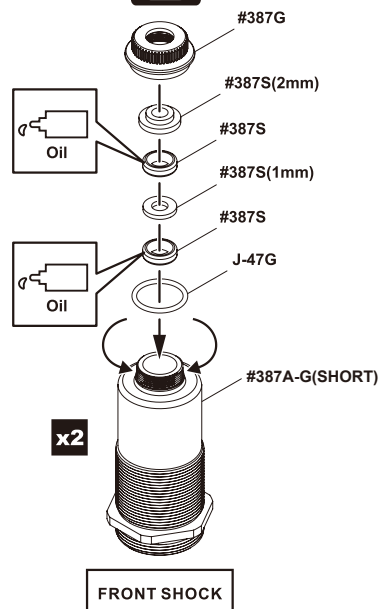
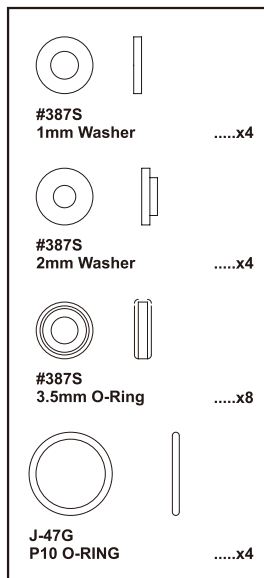
- Hold the shock rod at it's thread with side needle nosed pliers.
- Be careful not to damage the shock rod.



54 ASSEMBLY OF THE SHOCK O-RING

BAG NO.9

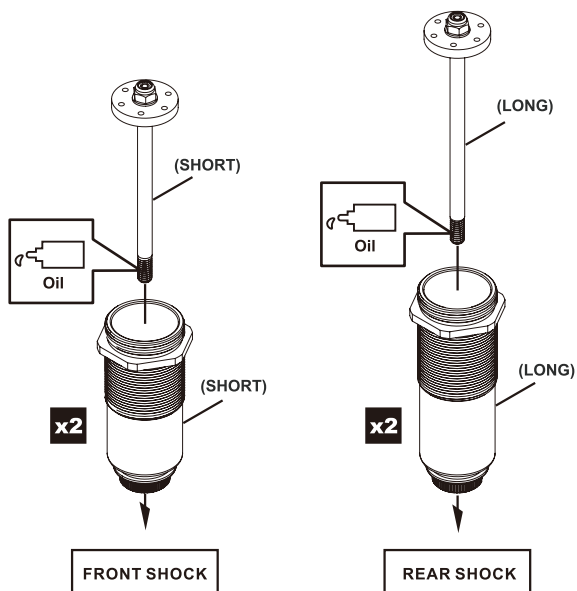
Assemble both left and right sides.



55 ASSEMBLY OF THE SHOCK SHAFTS INTO SHOCK BODIES

BAG NO.9

Assemble both left and right sides.



⚠ EXTREMELY IMPORTANT

Do not push the shock shaft straight down, O-ring can be damaged.

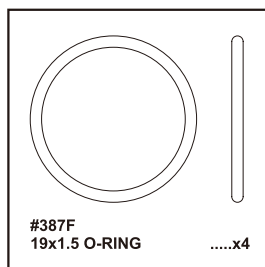
Slowly twist the shock shaft down to the bottom.



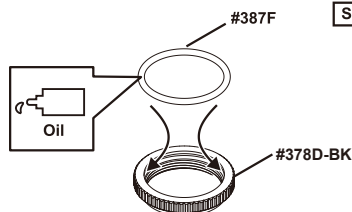
56 ASSEMBLY OF THE SHOCK ADJUST RING

BAG NO.9

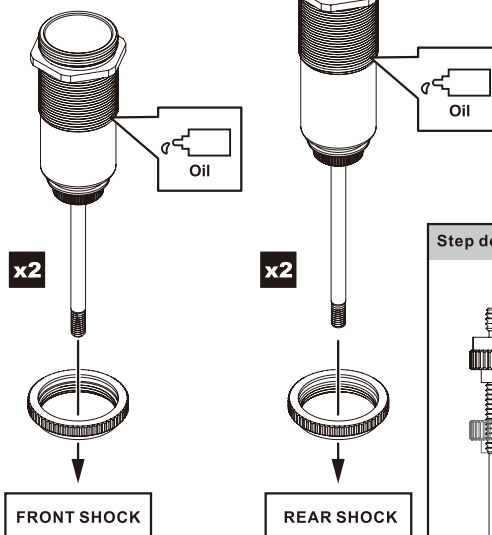
Assemble both left and right sides.



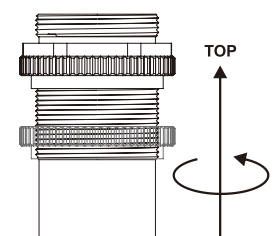
Step 1



Step 2



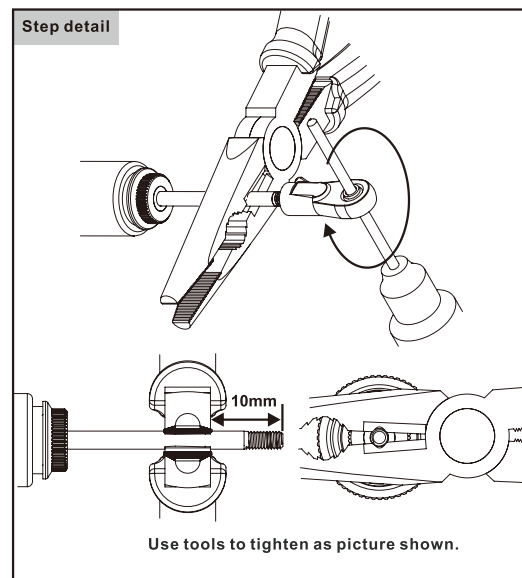
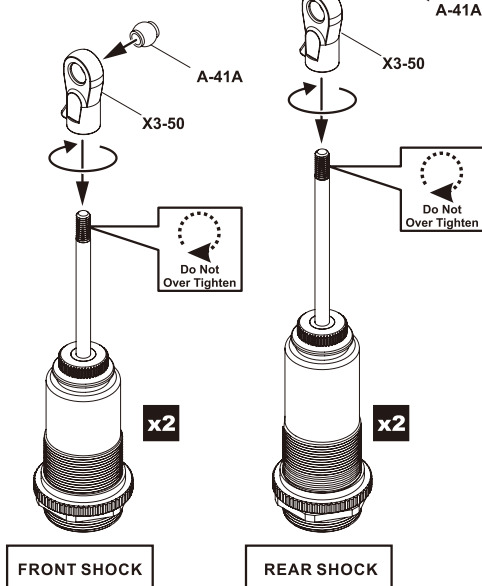
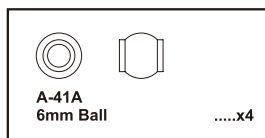
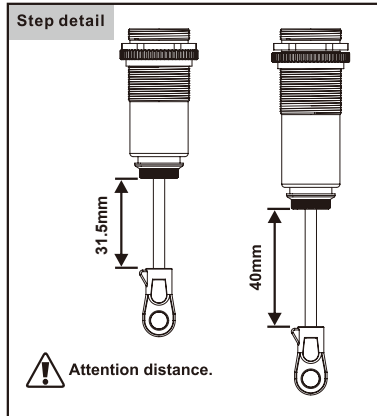
Step detail



57 ASSEMBLY OF THE SHOCK BALL END

BAG NO.9

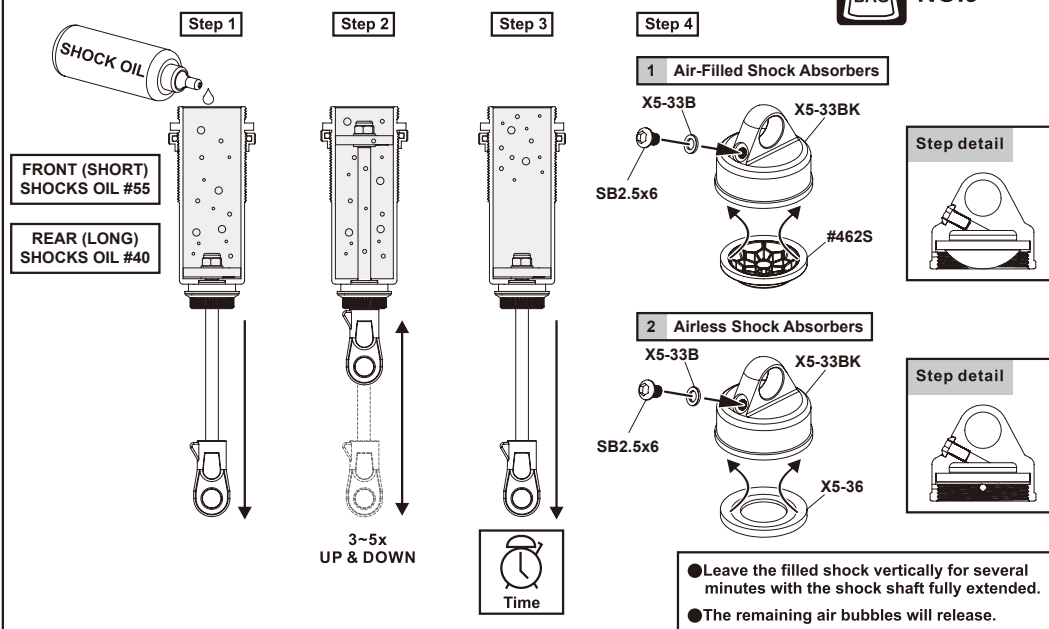
Assemble both left and right sides.



58 SETTING THE SHOCK REBOUND TO 100% (HIGH REBOUND)

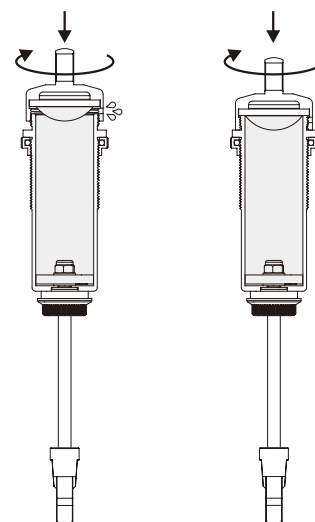
BAG NO.9

Assemble both left and right sides.



TIGHTENED HALF WAY 50%

TIGHTENED 100%



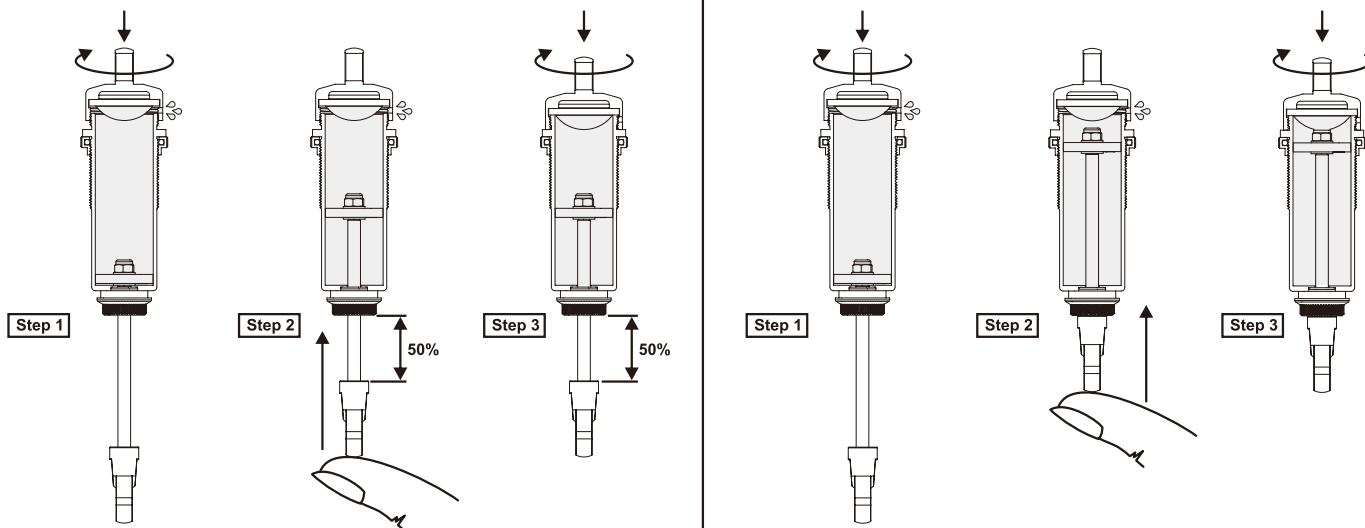
59 SETTING THE SHOCK REBOUND TO 50% & 0% (MEDIUM REBOUND & LOW REBOUND)

TIGHTENED HALF WAY 50%

TIGHTENED 100%

TIGHTENED HALF WAY 50%

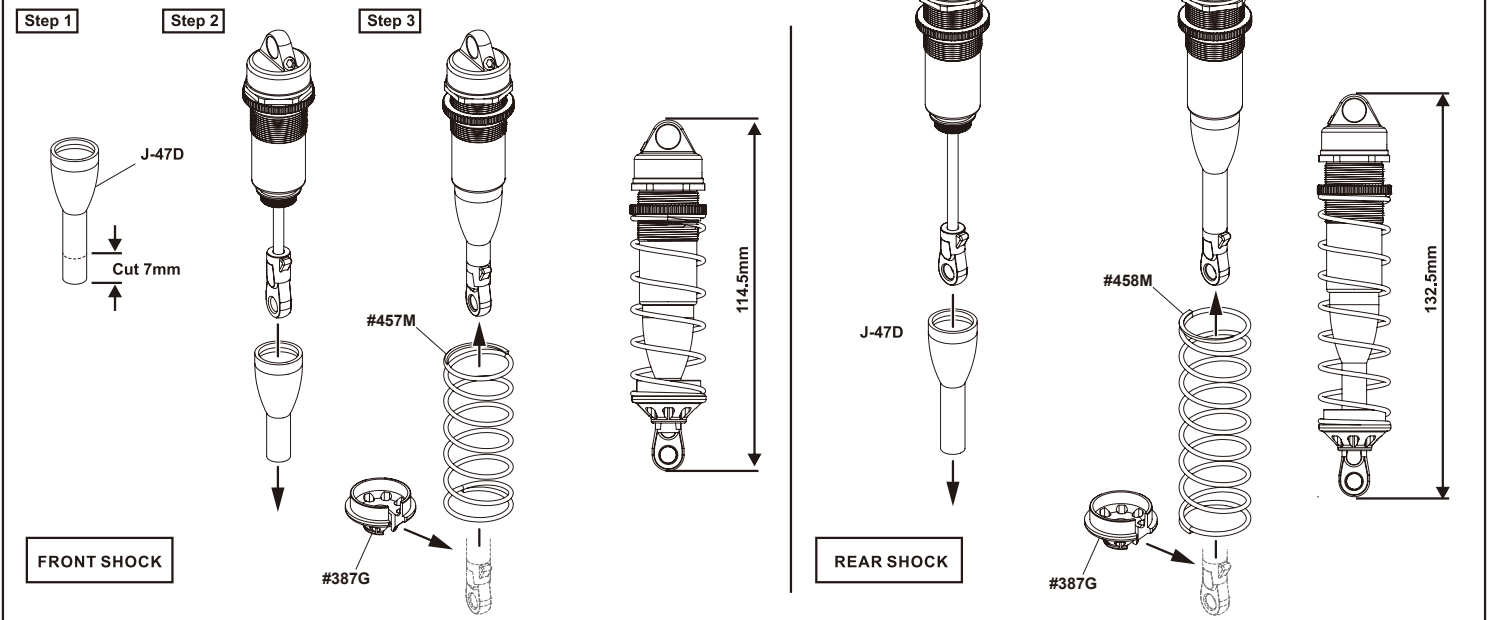
TIGHTENED 100%



60 ASSEMBLY OF THE SHOCKS SPRING



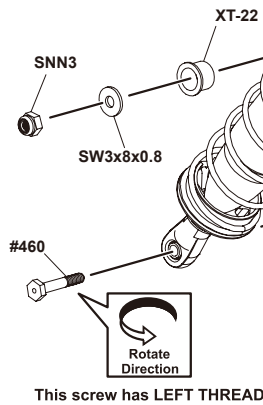
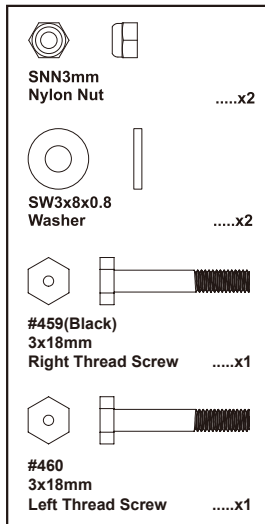
NO.9



61 ASSEMBLY OF THE SHOCKS INTO THE SHOCK STAY

Assemble both left and right sides.

R Right side



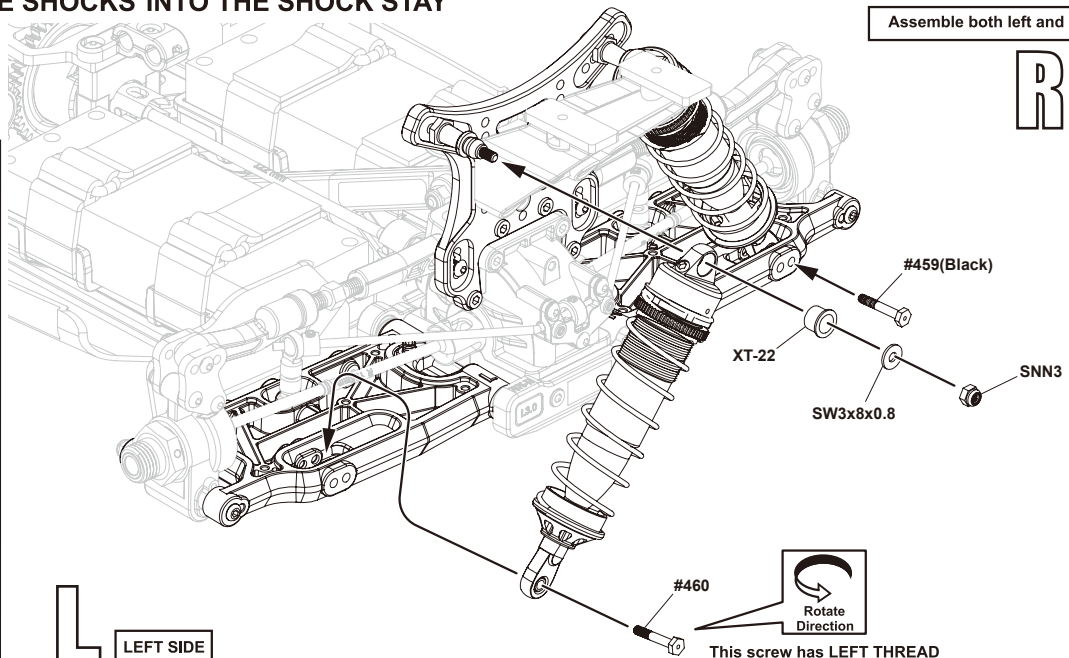
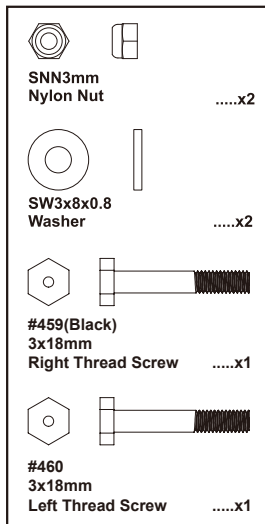
L LEFT SIDE

#459(Black)

62 ASSEMBLY OF THE SHOCKS INTO THE SHOCK STAY

Assemble both left and right sides.

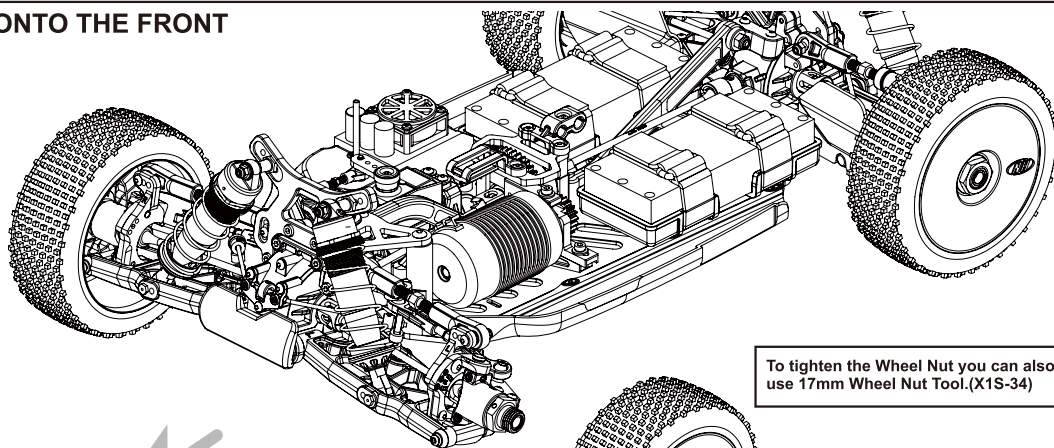
R Right side



L LEFT SIDE

63 ASSEMBLY OF THE TIRES ONTO THE FRONT KNUCKLE AND REAR HUB

R Right side

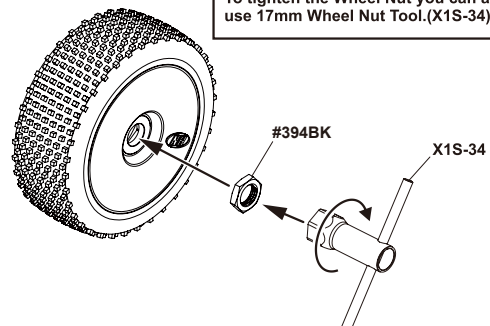


Assemble both left and right sides.



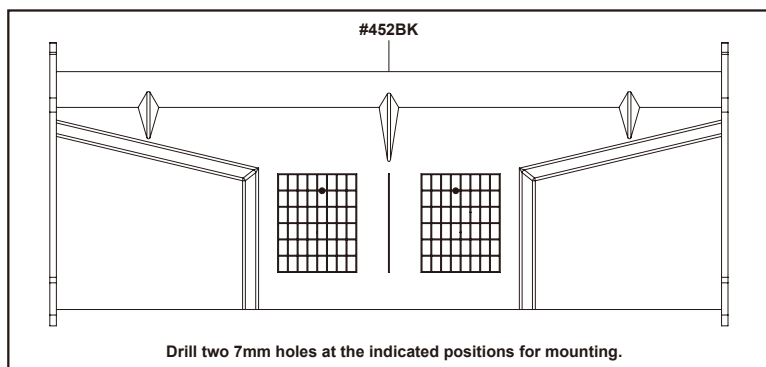
#394BK
Wheel Nutx4

To tighten the Wheel Nut you can also use 17mm Wheel Nut Tool.(X1S-34)



L LEFT SIDE

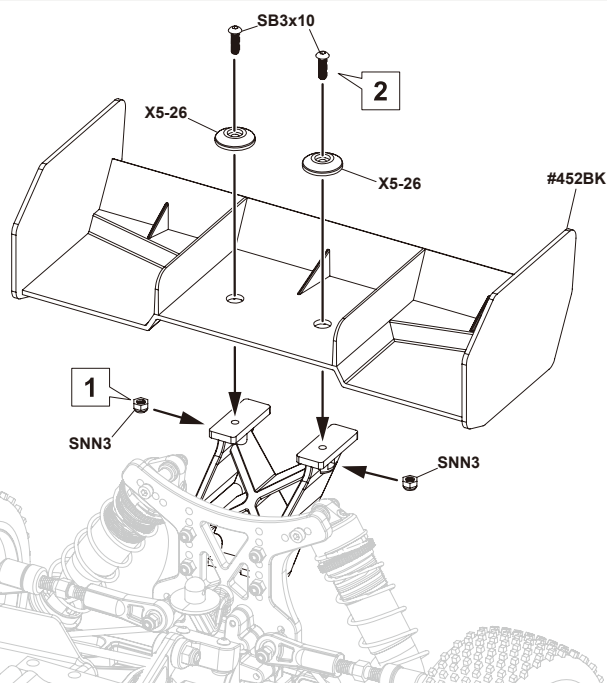
64 ASSEMBLY OF THE WING



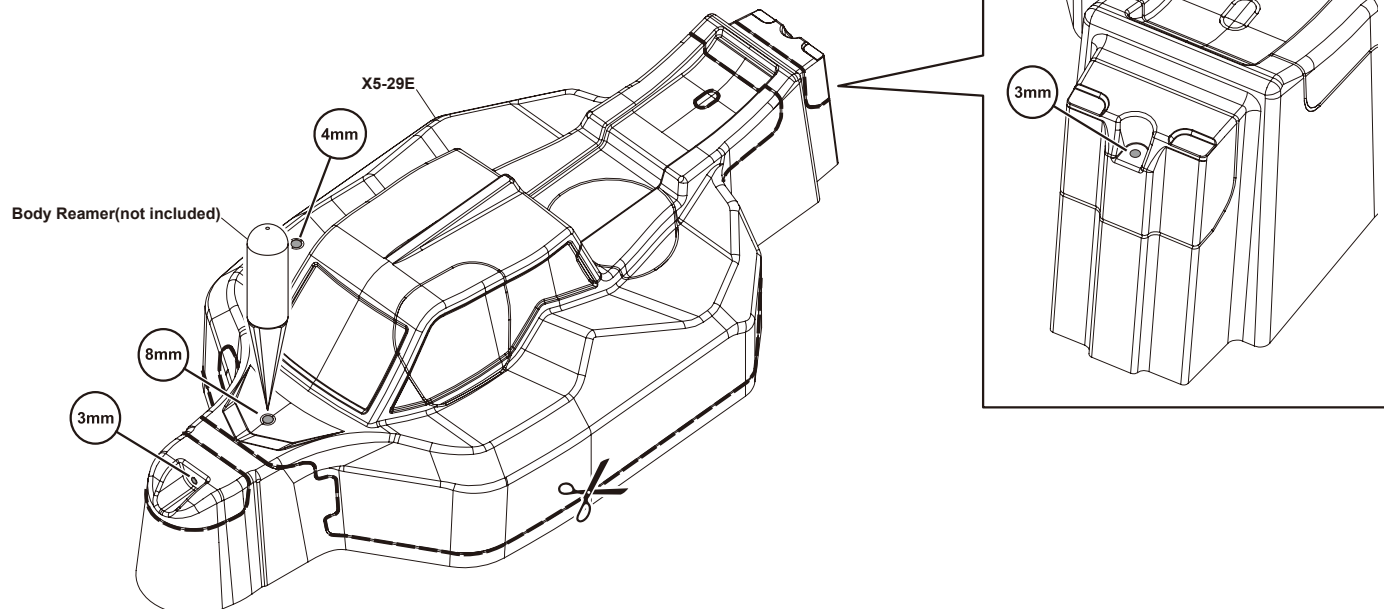
SNN3
Nylon Nutx2



SB3x10mm
Hex Screwx2

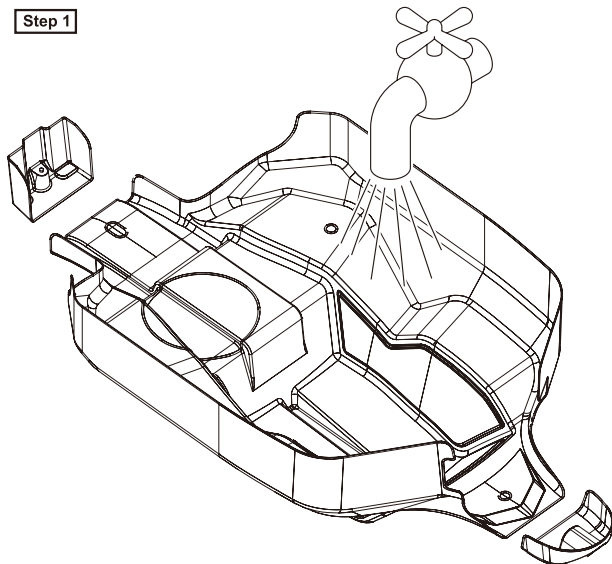


65 MAKING HOLES AND CUTTING ON THE BODY SHELL

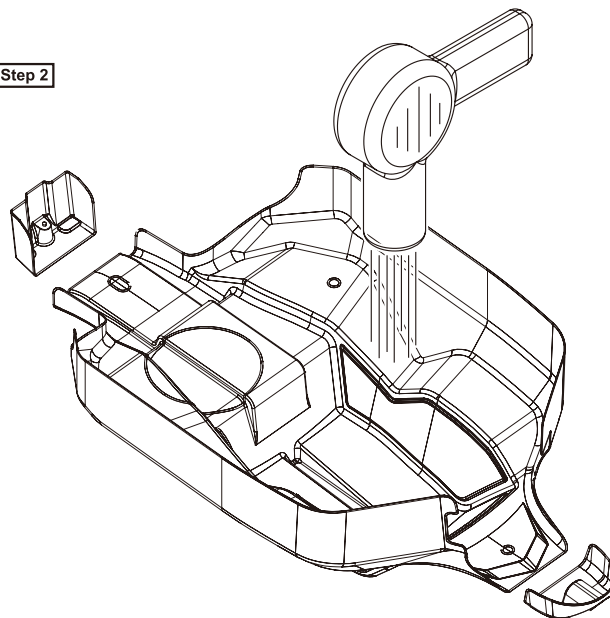


66 WASH THE INSIDE OF THE BODY SHELL

Step 1



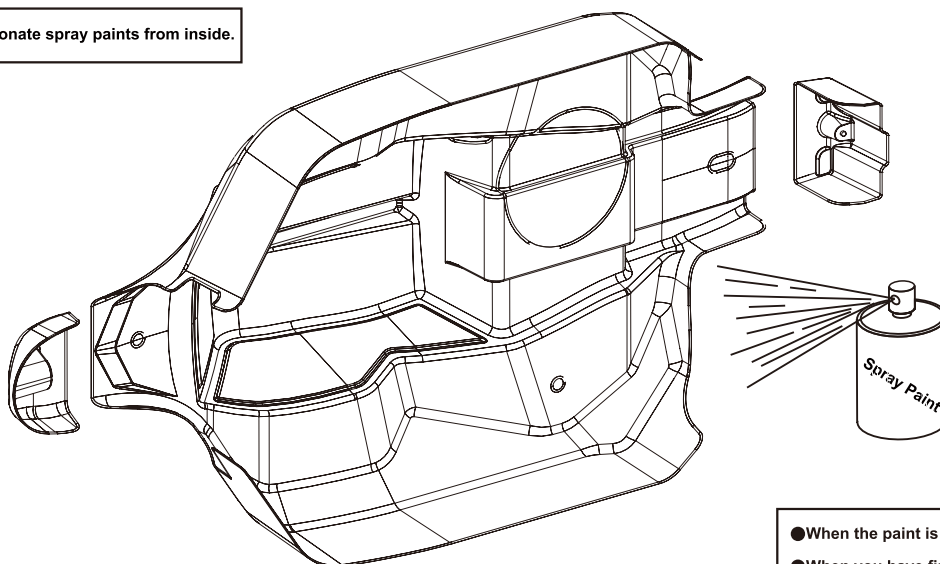
Step 2



Wash the inside of the body shell with mild detergent, and then rinse and dry thoroughly.

67 PAINTING BODY SHELL

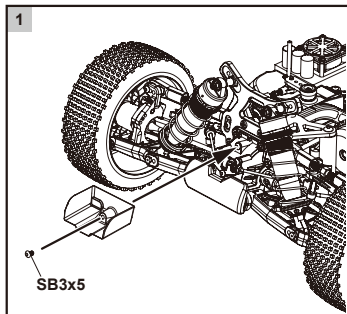
Paint the body with polycarbonate spray paints from inside.



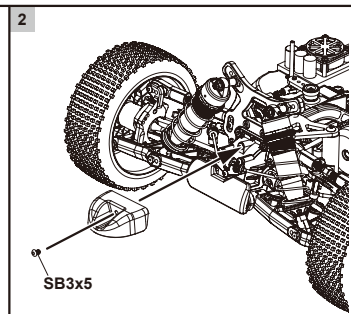
- When the paint is dry, remove the masking tape.
- When you have finished painting, peel off the external protective films.

68 MOUNTING THE BODY SHELL

1



2



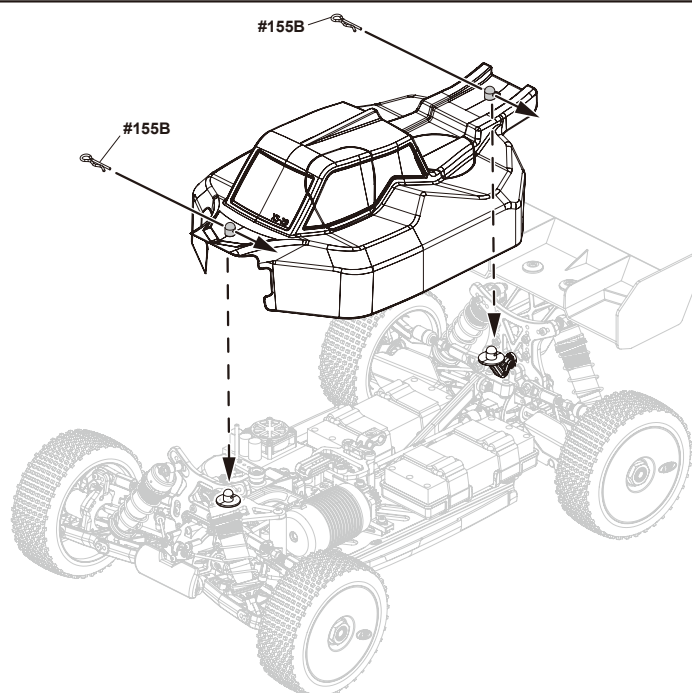
SB3x5

SB3x5

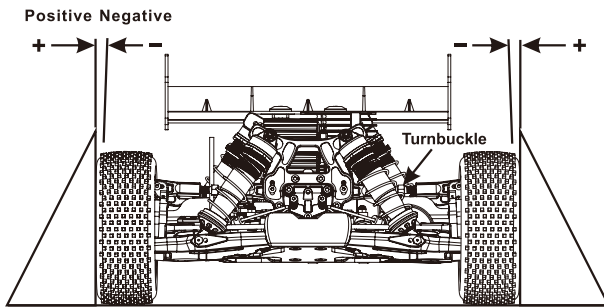


SB3x5mm
Hex Screw

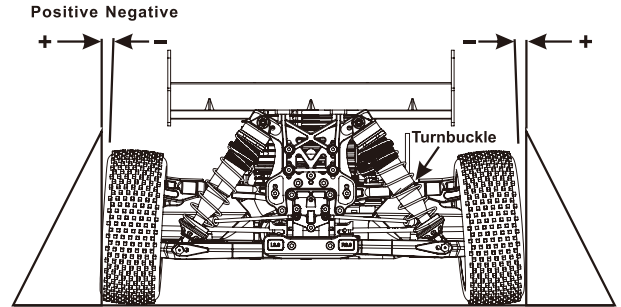
.....x1



FRONT CAMBER ANGLE SETTING

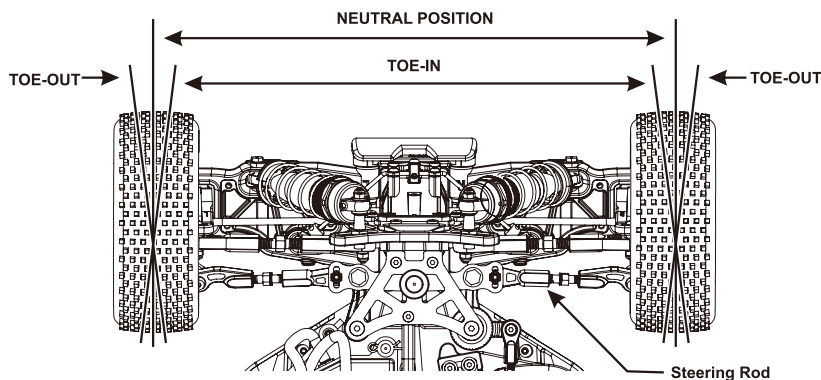


REAR CAMBER ANGLE SETTING



- Place the model car on flat surface. Raise the chassis to its clearance before the wheels leave the ground.
- Adjust the length of the front and rear upper arms so that the wheels are vertical to the ground.
- Adjust the camber angle by turning the turnbuckle rod on the upper arms clockwise or anti-clockwise.
(We suggest to use zero degree for the front and 1.5 degree negative for the rear.)

FRONT TOE-IN AND TOE-OUT SETTING

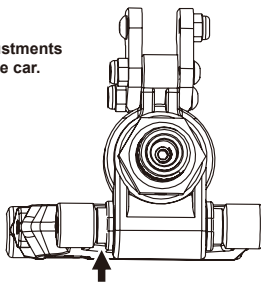
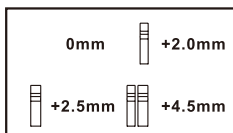


Adjust the length of front steering rod to change the toe angle.

- Making the tie rod longer will make front tires toed in.
Response will be slower and may over steer.
- Making the tie rod shorter will make front tires toed out.
Response will be quicker and may under steer.

REAR WHEELBASE

- Adjust the wheelbase by using the spacers on either side of the rear wheel hub (at the bottompin).
- **IMPORTANT!** Make equal adjustments on both left and right sides of the car.



Shorter wheelbase

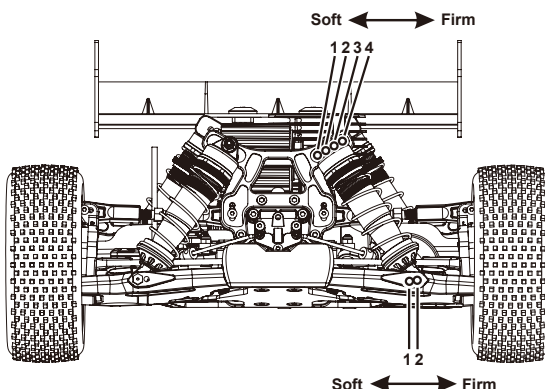
- Less spacers in front of the rear wheel hub.
- Increases rearward weight transfer during acceleration.
- Increases on-power traction.
- Quicker off-power steering into corners.
- Slight tendency to push on-power at corner exit.
- Increases steering response.
- Better on tighter, more technical tracks.

Longer wheelbase

- More spacers in front of the rear wheel hub.
- Decreases off-power steering into sharp corners.
- Increases stability.
- Slower initial steering reaction(off-power).
- Improves on-power steering at corner exit.
- Better handling over bumps and ruts.
- Better on more open tracks with high-speed corners.

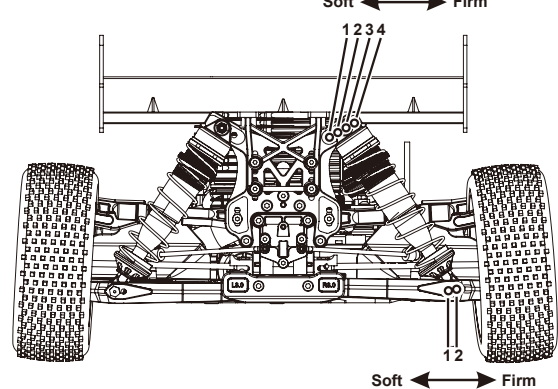
- Different shock positions will result in firmer or softer response of the suspension system.
- Install the shock in an inward angle will cause softer rebound. Softer or firmer suspension system will lead to different steering response.
- Adjust the shock angle positions according to track conditions.

FRONT SHOCK ANGLE SETTING



Firm front suspension, less steering.
Soft front suspension, more steering.

REAR SHOCK ANGLE SETTING



Firm rear suspension, over steering.
Soft rear suspension, under steering.

IX5B SETUP SHEET

NAME _____ RACE _____ DATE _____
 TRACK _____ CITY/COUNTRY _____ TRACK CONDITION _____

AIR TEMP _____ F° _____ °C

LAPS _____

BEST LAP TIME _____ in LAP

TRACK SIZE
☐ OPEN ☐ MEDIUM ☐ TIGHT

TRACK TRACTION
☐ HIGH ☐ MEDIUM ☐ LOW

DIFFERENTIAL OIL

FRONT	CENTER	REAR
<input type="checkbox"/> STD	<input type="checkbox"/> STD	<input type="checkbox"/> STD

OIL wt.
 FRONT ☐ CENTER ☐ REAR ☐

GEARING

SPUR GEAR	<input type="checkbox"/> T
PINION GEAR	<input type="checkbox"/> T

TIRES

FRONT TYPE _____
 COMPOUND _____
 INSERT FOAM _____

REAR TYPE _____
 COMPOUND _____
 INSERT FOAM _____

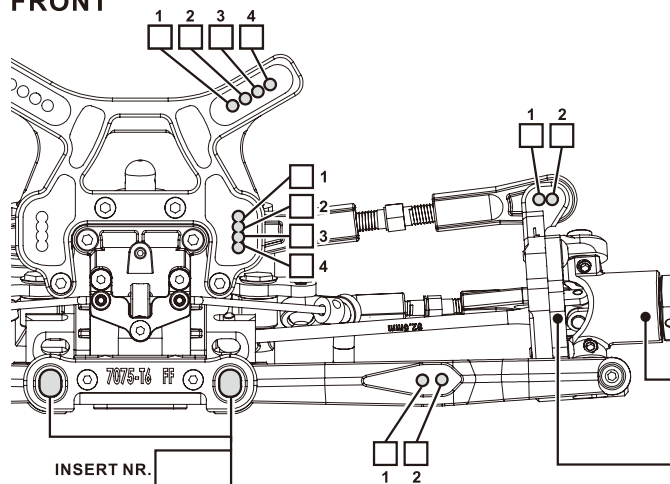
ELECTRIC MOTOR

TURN _____ /
 RPM _____
 KV _____
 BRAND _____

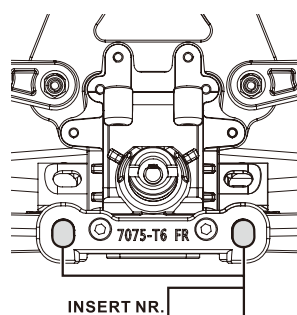
ELECTRIC SPEED CONTROLLER

BRAND _____
 TYPE _____

FRONT



INSERT NR. _____
☐ ☐ ☐ ☐



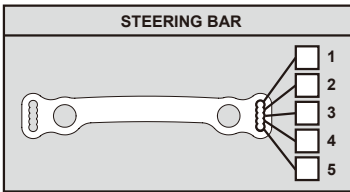
INSERT NR. _____
☐ ☐ ☐ ☐

RIDE HEIGHT	mm
SWAY BAR	mm
CAMBER ANGLE	°
TOE ANGLE	°
<input type="checkbox"/> PLASTIC <input type="checkbox"/> ALUM	

STEERING BLOCK
☐ +2° ☐ +4°

FRONT SPINDLE CARRIERS CASTER
☐ 15° ☐ 17.5° ☐ 20°

STEERING BAR

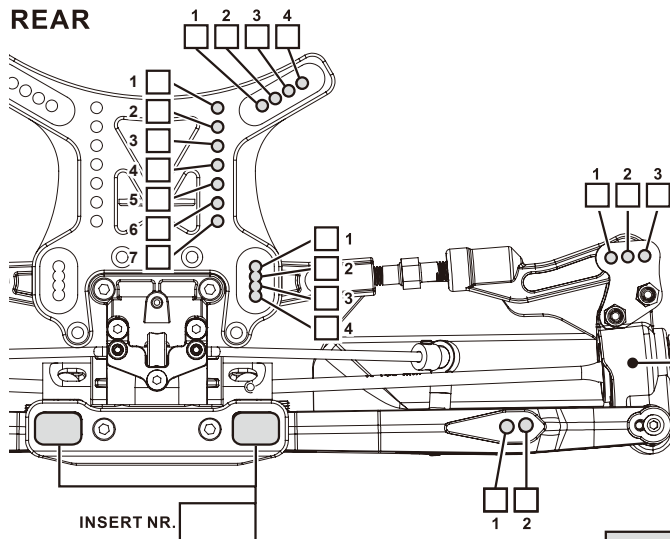


SHOCK

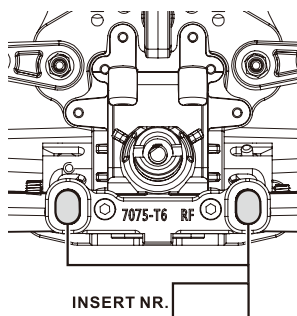
SHOCK LENGTH _____ mm
 OIL wt. _____
 PISTON _____
 SPRING _____



REAR



INSERT NR. _____
☐ ☐ ☐ ☐



INSERT NR. _____
☐ ☐ ☐ ☐

RIDE HEIGHT	mm
SWAY BAR	mm
CAMBER ANGLE	°
<input type="checkbox"/> PLASTIC <input type="checkbox"/> ALUM	

WHEEL HUB
☐ PLASTIC ☐ ALUM

REAR HUB BUSHING
☐ ☐ ☐

SHOCK

SHOCK LENGTH _____ mm
 OIL wt. _____
 PISTON _____
 SPRING _____



WHEELBASE SHIMS

☐ 0mm ☐ 2mm
☐ 2.5mm ☐ 4.5mm

X5B PARTS LIST

Part No.	Description	Q'TY	Part No.	Description	Q'TY
A-17A	Brake Lever	2	X3-43	Diff. Case (F&R)	1
A-17B	Brake Rod	2	X3-46	Suspension Bracket Inserts	1set
A-34B	Stabilizer Ball End	2	X3-49	Body Post/Center Brace	1set
A-41A	6mm Ball	6	X3-50	Plastic Rod End	1set
A-47A	Ball Bearing 5x10x4	2	X3-52	Front Bumper / Rear MudGuard	1set
A-53A	Throttle Spring	2	X3-60A	Air Filter Foam	2
A-80A-BK	2mm Brake Adjust Nut (Black)	2	X3-60P	Air Filter Plastic Parts	1set
A-80B	Throttle Linkage Plastic	1set	X3.6-07	4x67.6mm Arm Shaft	2
C-27	Servo Fixing (Lay down)	1set	X3S-04	Diff. Cap Joint (Lightweight)	2
E-37	6mm Ball & Socket	6	X3S-16	Rear Upright 3.5mm	2
G-25	7mm Ball	6	X3S-27B	CNC Brake Disk	1
G-26	5x35 Turnbuckle	2	X3S-27C	CNC Brake Disk, Small	1
J-03A	P-6 O-Ring	2	X3S-44C	4x35mm Turnbuckle	2
J-20	Diff Bevel Gear Shim 13x16x0.2mm	4	X3S-44D	CNC Alum. Servo Saver Connecting Plate	1
J-33	Steering Plate Hex Screws	2	X3GT-40	Cup Joint For Planet Gear	2
J-45-BK	Muffler Stay Post (Black)	1	X3GT-71E	Fixing Pin	2
J-47D	Shock Shaft Dust Covers	4	X5-01	CNC 7075-3mm Lightweight Chassis	1
JS-06B	Bearing 4x8 Flange	2	X5-02	CNC 7075 Front Shock Tower	1
JS-14B	6x10 Ball Bearing	4	X5-03	CNC 7075 Rear Shock Tower	1
K-11A	Insert for Servo Saver	1set	X5-04	CNC 7075 Suspension Bracket, FR	1
L-26	3x36mm Turnbuckle	2	X5-05	CNC 7075 Suspension Bracket, FF	1
TM-29	Brake Link 2x52mm	2	X5-06	CNC 7075 Suspension Bracket, RF	1
TM-48	Stabilizer Ball End	8	X5-07	CNC 7075 Suspension Bracket, RR	1
X1-10H	Servo Saver Tube, Hard-Coated	1	X5-08	Alum.Angle Adjustable C-Hub Set	1set
X1-26-G	Alum. Wheel Hub.(Gold)	2	X5-09A	Steering Block Set	1set
X1-27	Knuckle Arm Bushing	4	X5-09B	Carbon Steering Block Arm Set	1set
X1-29	Front Stabilizer 2.0mm	1	X5-10	Alum. Swaybar Pin	2
X1-30	Rear Stabilizer 2.5mm	1	X5-11	Topdeck Carbon	1
X1-31	Shock Ball End Post/ One-Piece/ Top	4	X5-12	Carbon Center Diff Top Plate	1
X1-49	Muffler Stay	1	X5-15	Front CVD Drive Shaft 92.5mm	2
X1S-52C	CNC Brake Cam, Long	1	X5-16	Servo Saver Post	2
X1S-52D	CNC Brake Cam, Short	1	X5-17	5x50mm Turnbuckle	2
X1S-55A	Servo Saver, Plastic	1set	X5-18	Steering King Pin	4
XT-22	Plastic Shock Parts Set	1	X5-19	Anti-roll Bar Collet	2
XT-30B	Fuel Tank Post	1set	X5-20	Servo Saver Spring	1
XT-31	Plastic Center Diff. Mount	1set	X5-21	Gear Case	1set
X3-01	Spiral Bevel Gear 43t	1	X5-22	Lower Arm Front	1set
X3-02	Spiral Bevel Gear 13t	1	X5-23	Lower Arm Rear	1set
X3-03	Diff. Gear 10Tx4, 20Tx2	1set	X5-24	Receiver/ Battery Box	1set
X3-06	Drive Shaft Insert, 2.5 x12.8 Pin	4	X5-25A	Rear Hub L, R	1set
X3-07	CVD Wheel Axle	2	X5-25B	Carbon Rear Plates	2
X3-26	Brake Spring	4	X5-26	Wing Mount	1set
X3-31	7x8.5mm Ball & Socket	4	X5-27	Diff. Cap Joint (Lightweight)	2
X3-32	7x12mm Ball & Socket	4	X5-28	Fuel Tank	1
X3-34	2.5x11.8 Pins	10	X5-29	X5B Clear Body	1
X3-35	2.5 x12.8 Pins	10	X5-30	Steering Servo Saver Alum.	1
X3-37-BK	Engine Mount L.R (Black)	1set	X5-31	Side Guard L,R	1set
X3-38	Diff Gasket 31x20x0.3	3	X5-32	Steel Spur Gear 46t	1
X3-39	4x8mm Engine Mount Screws	4	X5-33	16mm Alum. Aeration Shock Cap	2
X3-40	4x10 Round Head Set Screw	4	X5-34	Center Drive Shaft. 95mm	1

[illegible]



**1/8 HIGH PERFORMANCE
OFF ROAD
ELECTRIC BUGGY**

HONG NOR

Hong Nor Hobbies International Co., Ltd.

5F., No. 14, Wuquan 7 th Rd., Wugu Dist., New Taipei

City, 24890, Taiwan

Tel: +886-2-2888-1221

Fax: +886-2-2888-3533

www.hongnor-racing.com