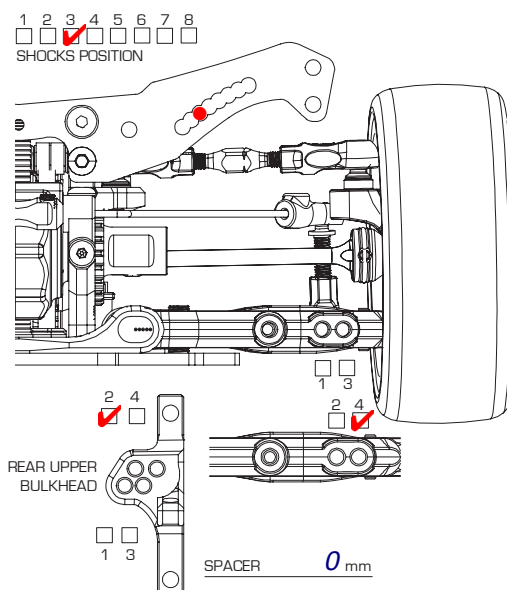
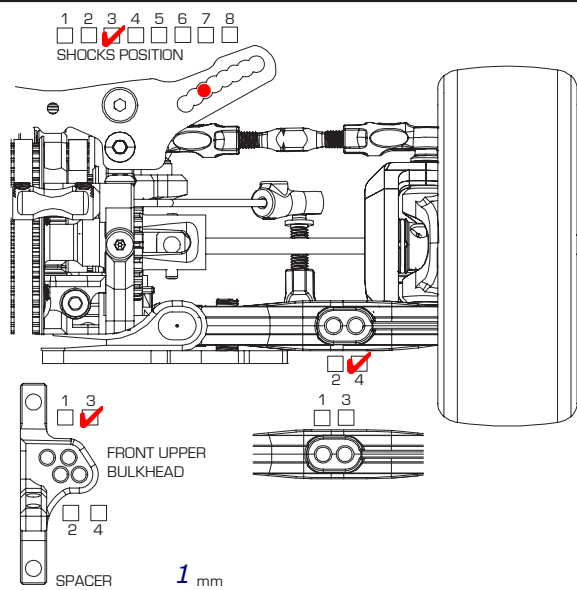


WILDFIRE 008

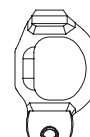
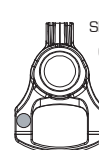
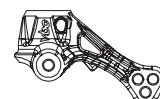
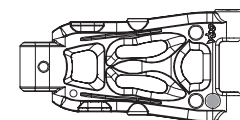
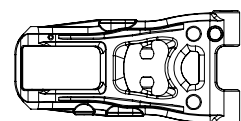
1/10 4WD ELECTRIC COMPETITION TOURING CAR KIT

SETUP SHEET

Arr0

TRACK **Hudy Arena** RESULT **12th**ASPHALT / CARPET INDOOR / OUTDOOR ☒ BEST LAP **20.5**HUMIDITY **50%** TRACK TEMP AIR TEMPGRIP LOW ☒ MEDIUM ☒ HIGH SURFACE BUMPY MEDIUM SMOOTH

COMPOSITES



FRONT

GROUND CLEARANCE **5.1** mm DROOP **5.2** mmCAMBER ANGLE **2** ° TOE ANGLE **1** °CASTER ANGLE **4** ° FRONT DRIVE DIFF (OIL) ☒ DIRECTSTABILIZER 1.2 ☒ 1.4 WHEEL SPACER mm

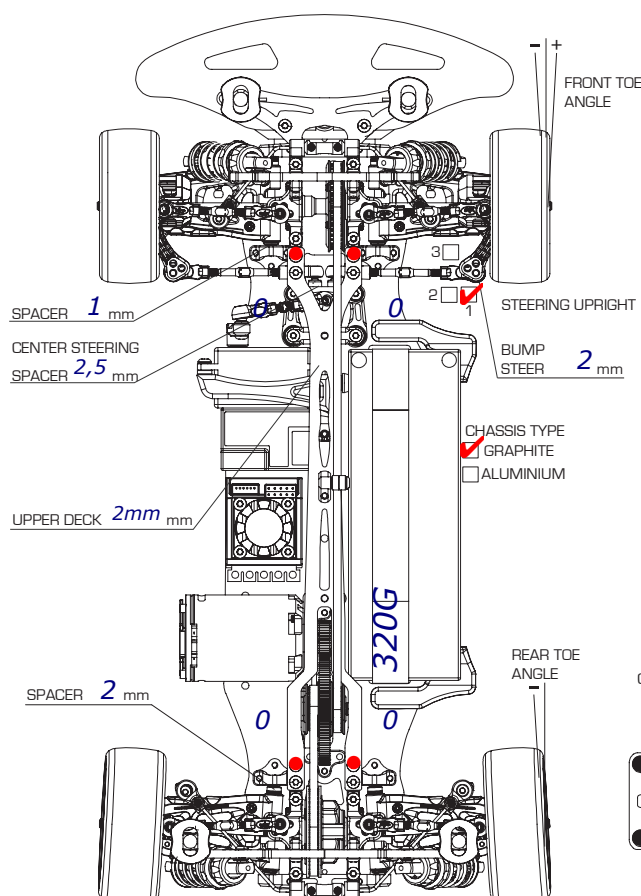
SUSPENSION SHIM (FF) mm SUSPENSION SHIM (FR) mm

SUSPENSION MOUNT (FF) **+2** SUSPENSION MOUNT (FR) **1**AXLE TYPE / SIZE TWO-PIECE JOINT / SINGLE JOINT (STEEL / ALUM) **KIT** mm

REAR

GROUND CLEARANCE **5,3** mm DROOP **1,4** mmCAMBER ANGLE **2** ° TOE ANGLE **2,5** °REAR DRIVE DIFF (OIL) **5000** DRIVE CUP ALUMINUM ☒ / STEELSTABILIZER 1.2 ☒ 1.4 WHEEL SPACER mm

SUSPENSION SHIM (FF) mm SUSPENSION SHIM (FR) mm

SUSPENSION MOUNT (FF) **1** SUSPENSION MOUNT (FR) **+3**AXLE TYPE / SIZE TWO-PIECE JOINT / SINGLE JOINT (STEEL / ALUM) **49** mm

FRONT

SHOCK LENGTH **9** mmPISTON 3 ☒ hole(s) / OTHERSOIL **450**SPRING **Xray 2,7**OIL SEALER CAP S / MS / ☒ / HREBOUND **0 %**NOTES **TBBS**MOTOR **13.5**TIRE **Volante**TIRE ADDITIVE **Hudy Carpet**ESC **Fleta Euro**REMARKS **27° Steering Lock, Tot weight 1365, No Stiffners**

REAR

SHOCK LENGTH **9** mmPISTON 3 ☒ hole(s) / OTHERSOIL **450**SPRING **Xray 2,7**OIL SEALER CAP S / MS / ☒ / HREBOUND **0 %**NOTES **TBBS**

Chassis Flex Setting (Fill in the Circle)

