

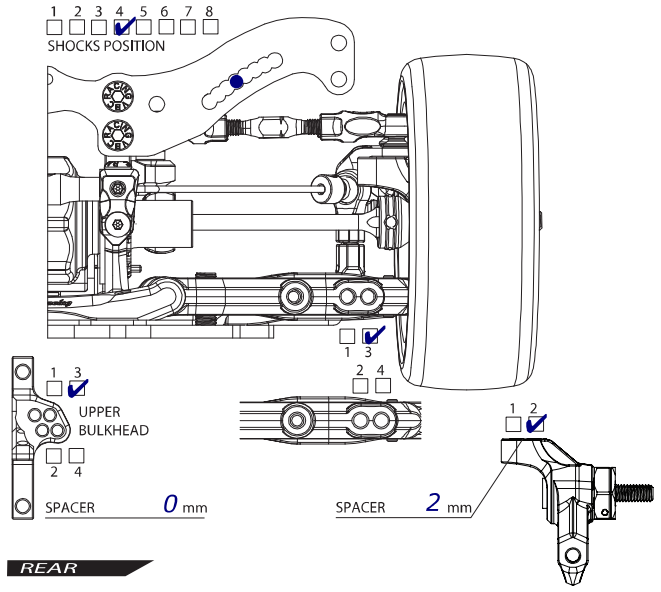
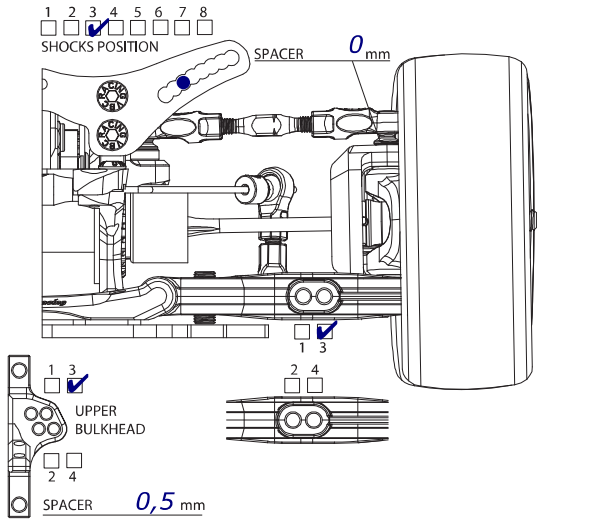
# WILDFIRE DO6

1/10 4WD ELECTRIC COMPETITION TOURING CAR KIT



DRIVER <i>Delisé Nicolas</i>	DATE <i>20-07-14</i>
TRACK NAME <i>Rucphen</i>	RESULT <i>3</i>
COMPOSITION (INDOOR/OUTDOOR) <i>✓</i>	BEST LAP <i>14,8</i>
HUMIDITY	TRACK TEMP <i>Hot</i>
GRIP <i>✓</i> MEDIUM LOW	SURFACE SMOOTH BUMPY

## SETUP SHEET

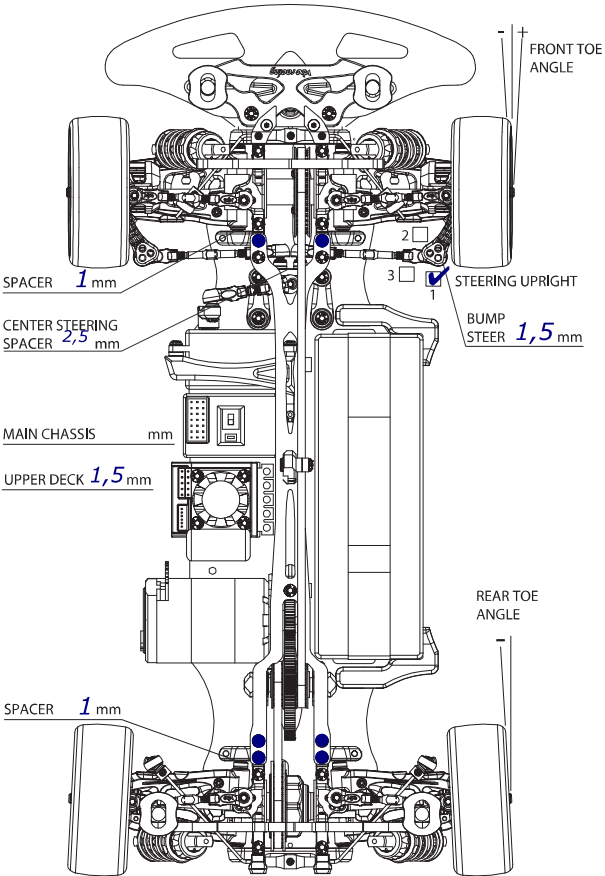


**FRONT**

GROUND CLEARANCE	<i>5</i> mm	DROOP	<i>5,5</i>	
CAMBER ANGLE	<i>1,5</i> °	TOE ANGLE	<i>1,5</i> °	
CASTER BLOCK	<i>4</i> °	FRONT DRIVE	DIFF (OIL ) / DIRECT <i>✓</i>	
STABILIZER	1.2 <i>✓</i>	1.4	WHEEL SPACER	<i>0</i> mm
SUSPENSION SHIM (FF)	<i>0,5</i> mm	SUSPENSION SHIM (FR)	<i>0,5</i> mm	
SUSPENSION MOUNT (FF)	<i>E10</i>	SUSPENSION MOUNT (FR)	<i>C10</i>	
WHEELBASE	FRONT <i>3</i>	REAR <i>1</i>	BELT TENSION	
AXLE TYPE / SIZE	TWO PIECE JOINT / SINGLE JOINT (STEEL/ALUM) mm			

**REAR**

GROUND CLEARANCE	<i>5,4</i> mm	DROOP	<i>1</i>	
CAMBER ANGLE	<i>1,5</i> °	TOE ANGLE	<i>2,5</i> °	
REAR DRIVE	DIFF (OIL <i>5000</i> )	DRIVE CUP	ALUMINUM/STEEL	
STABILIZER	1.2 <i>✓</i>	1.4	WHEEL SPACER	<i>0</i> mm
SUSPENSION SHIM (RF)	<i>1</i> mm	SUSPENSION SHIM (RR)	<i>1</i> mm	
SUSPENSION MOUNT (RF)	<i>C10</i>	SUSPENSION MOUNT (RR)	<i>E15</i>	
WHEELBASE	FRONT <i>1</i>	REAR <i>3</i>	BELT TENSION	
AXLE TYPE / SIZE	TWO PIECE JOINT / SINGLE JOINT (STEEL/ALUM) mm			



<b>FRONT</b>	<b>REAR</b>
SHOCK LENGTH <i>60</i> mm	SHOCK LENGTH <i>60</i> mm
PISTON <i>✓</i> 4 holes / OTHERS	PISTON <i>✓</i> 4 holes / OTHERS
OIL <i>400</i>	OIL <i>400</i>
SPRING <i>HPI Silver</i>	SPRING <i>HPI Silver</i>
OIL SEALER CAP S / MS / M / H	OIL SEALER CAP S / MS / M / H
REBOUND %	REBOUND %
NOTES <i>Hole in cap</i>	NOTES <i>Hole in cap</i>

MOTOR <i>MuchMore 4,5</i>	SPUR <i>116</i> T	PINION <i>27</i> T	PITCH <i>64</i>
TIRE <i>Ride Rex34</i>	TIRE INSERT	WHEEL	
TIRE ADDITIVE <i>LRP Carpet 2</i>	TIME <i>25</i>	TIRE WARMER <i>60</i>	
ESC	ESC SETTING		
BATTERY	BODY <i>LTC-R</i>	REAR WING <i>MR33</i>	
REMARKS	<i>Alu chassis Raceberry Shocktower</i>		