

# Caution

Ensure the Reventon ESC is **NOT** connected to the battery the cooling fan from the ESC before the Reventon ESC is connected to the PC. Failure to ensure these items are disconnected **WILL** result in Program Card, ESC, or PC damage.

Ensure power connectors on the Reventon ESC (red + and black-) are not touching each other or touching any other metal surfaces.

Ensure the Reventon Smart Program card USB driver is installed on the PC correctly before running the Reventon PC interface.

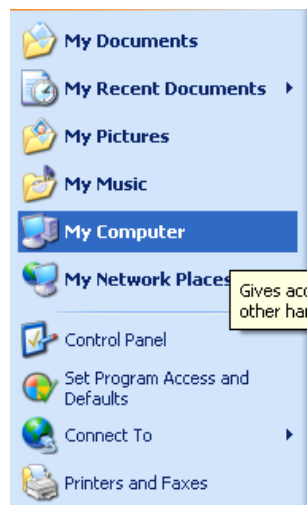
## Check Reventon Smart Program card for USB driver

Step1: Connect the Reventon Smart Program card to the PC (Reventon ESC should not be connected to the program card at this time)

Step2: In window, click “Start” (lower left corner) and open Computer (My Computer)

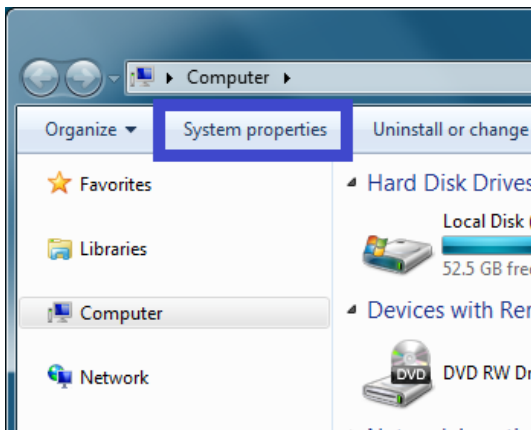


Windows 7

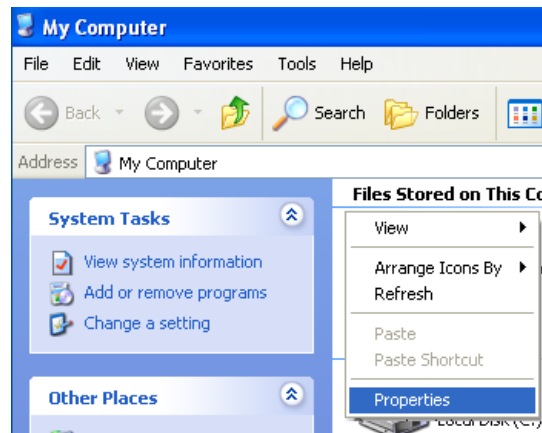


Windows XP

### Step3: Open System properties (Properties)

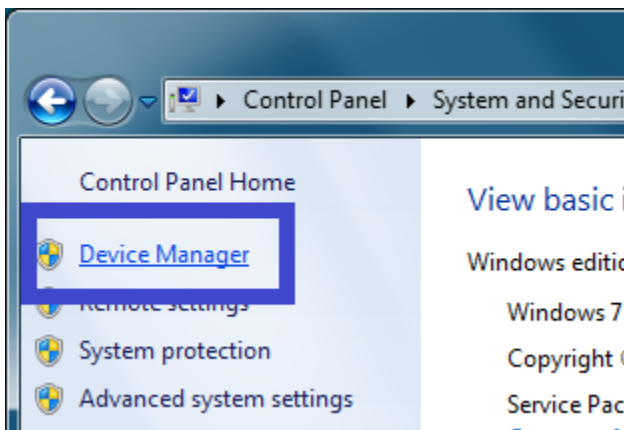


Windows 7



Windows XP

### Step4: Open Device Manager



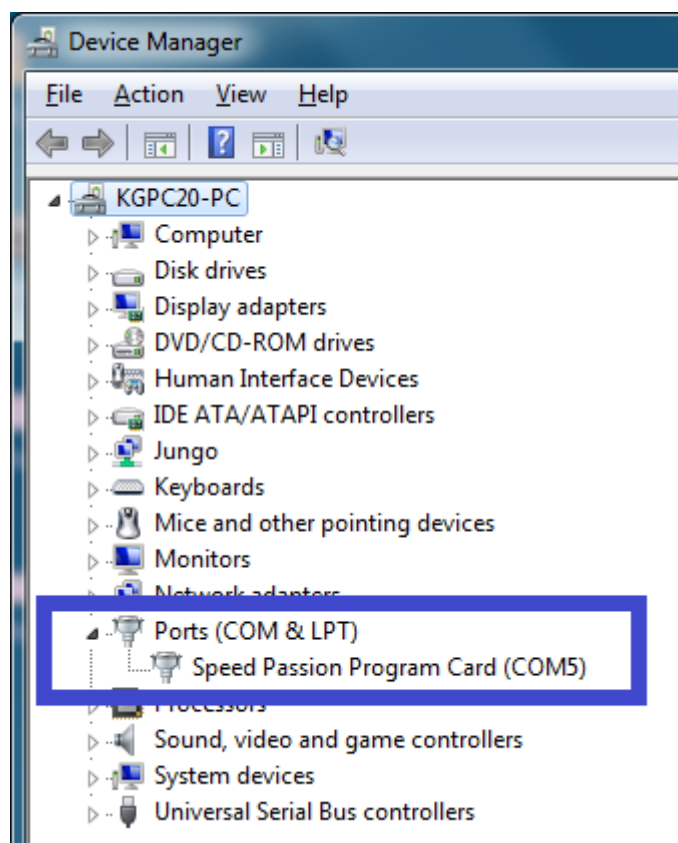
Windows 7



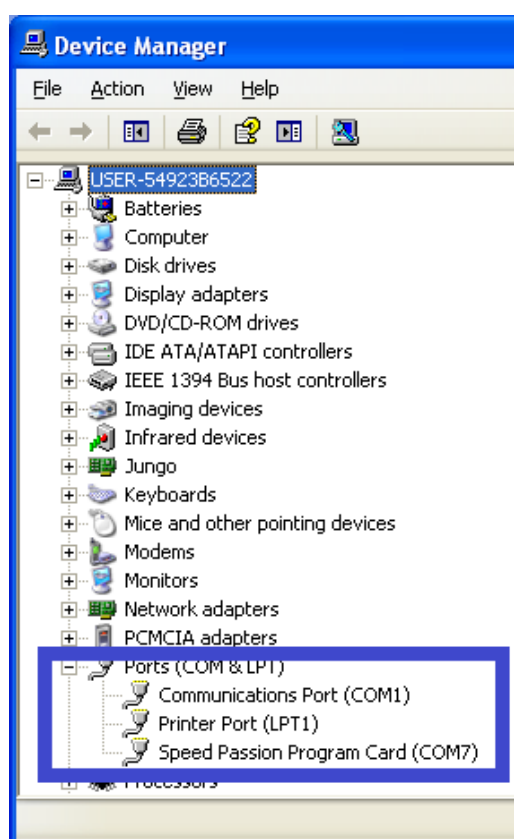
Windows XP

Step5: Check for devices connected to the PC in the “Ports” heading.

If “Speed Passion Program Card” is present, the USB driver installation is complete.

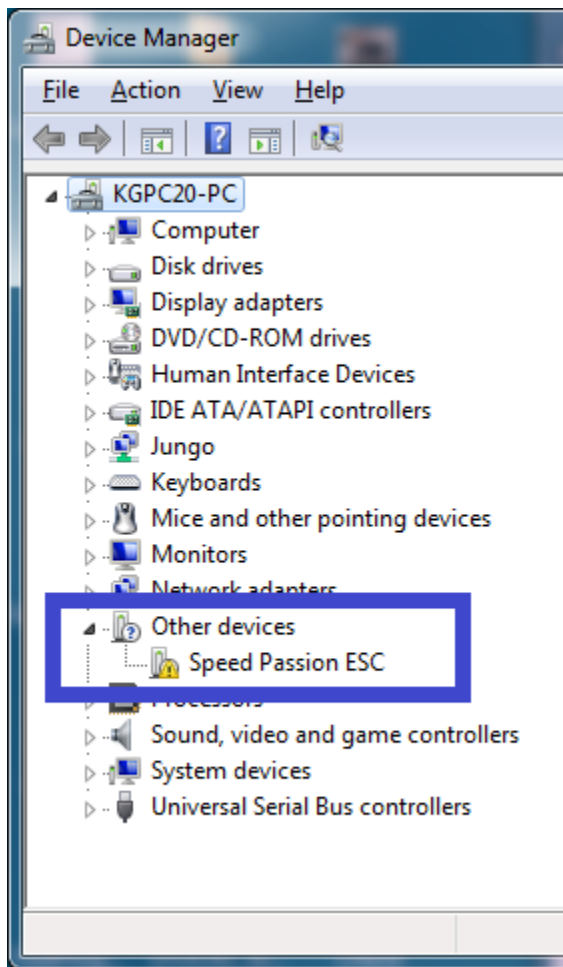


Windows 7

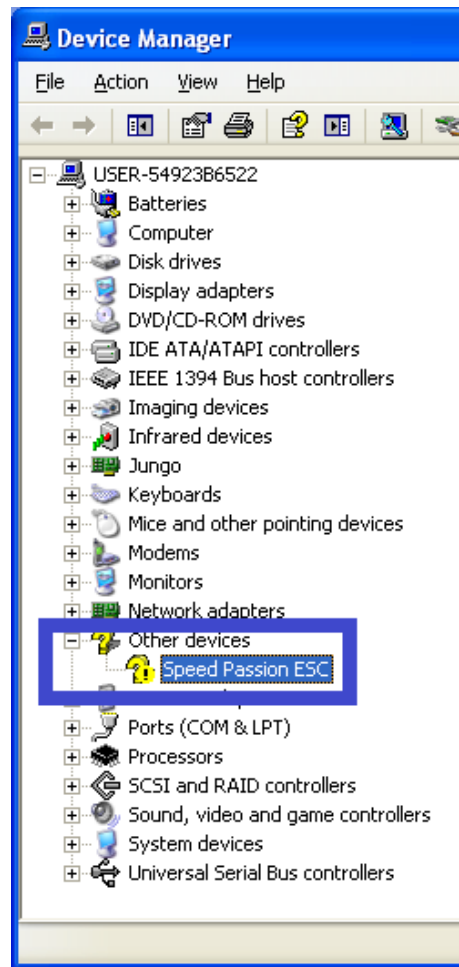


Windows XP

If “Speed Passion ESC” is displayed in the “Other devices” heading, the USB driver is not installed correctly. Please follow the instructions below to properly install the USB driver.



Windows 7



Windows XP

Video for the Reventon PC software installation guide (include USB driver installation)

<http://www.youtube.com/watch?v=qPDmp0Furhw>

USB driver installation guide (Reventon ESC User Manual - Page17)

<http://www.speedpassion.net/en/download.asp>