

# BLACKBOX 610R

## ELECTRONICS SET-UP SHEET

DRIVER: Joona Haatanen EVENT: Florida Carpet Championships TRACK: Beachline RC DATE: November 16, 2025

VEHICLE: RC-10B84 CONDITIONS: Indoors, carpet, large, medium grip BATTERY: #27604 Reedy Zapper SG6 4800 LP TEMP: N/A

### ESC INFO

FIRMWARE: 11858509

CAPACITOR TYPE: Default

FAN: No

WIRE SIZE: 13 AWG

### BRAKE

1A DRAG BRAKE: 8%

1B BRAKE STRGTH: 95%

1C INIT BRAKE: 0%

1D BRAKE FREQ: 2KHz

1E BRAKE PUNCH: Level 10

1F BRAKE MODE: Traditional

### THROTTLE

3A PUNCH CTRL: Level 15

3B INIT THROTTLE: 2%

3C DRIVE FREQ: 16KHz

3D DEADBAND: 4%

3E CURRENT LIMIT: 100%

### MOTOR POWER

EXPERT

4A BT SOFT PWIR: 0deg

4B BT SOFT RNG: 5%

4C COAST VALUE: 0%

4D BOOST TIMING: 0deg

4E BOOST TIM ACT: RPM

4F BOOST ST RPM: 5000

4G BOOST END RPM: 20000

4H TURBO TIMING: 20deg

4J TURBO DELAY: 0.05sec

4K SLEW RATE: 10deg/0.1s

4L RELEASE RATE: 12deg/0.1s

STANDARD

5A TIMING LEVEL: N/A

### RADIO SETTINGS

THROTTLE EPA: Set @ 100

BRAKE EPA: Set @ 100

THROTTLE EXPO: 0%

### MISC CONTROL

6A RUN MODE:  F/B  F/R/R

6B REVERSE PWR:  25%  50%  75%  100%

6C BATT CUTOFF:  NONE  3.2V/CELL  3.4V/CELL

6D ESC TEMP CUT:  OFF  221F/105C  257F/125C

6E MOT ROTATION:  NORMAL  REVERSE

6F BEC VOLTAGE: 6.0 V

### MOTOR SETTINGS

MOTOR: Reedy M4

WIND: #27452 4.5T

TIMING: 28\*

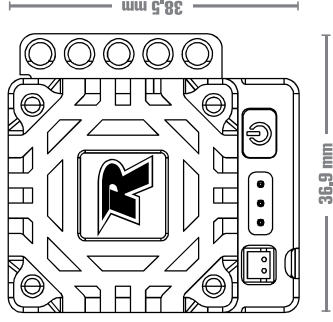
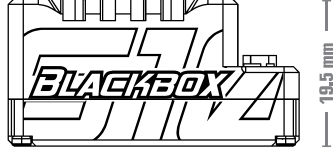
ROTOR: #27448 Reedy 12.5 x 5.0 mm

FDR/ROLLOUT: 19T / 78T

### MISCELLANEOUS

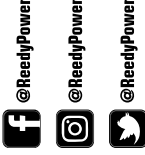
SERVO: #27155 Reedy RT2007A

CHARGER: #27203 Reedy 14116-C2L



### NOTES:

- Sanwa M17 Settings
- Throttle Rate = 100%
- Brake Rate = 95%
- Steering Expo = -30%
- Steering Speed = -20%



www.ReedyPower.com