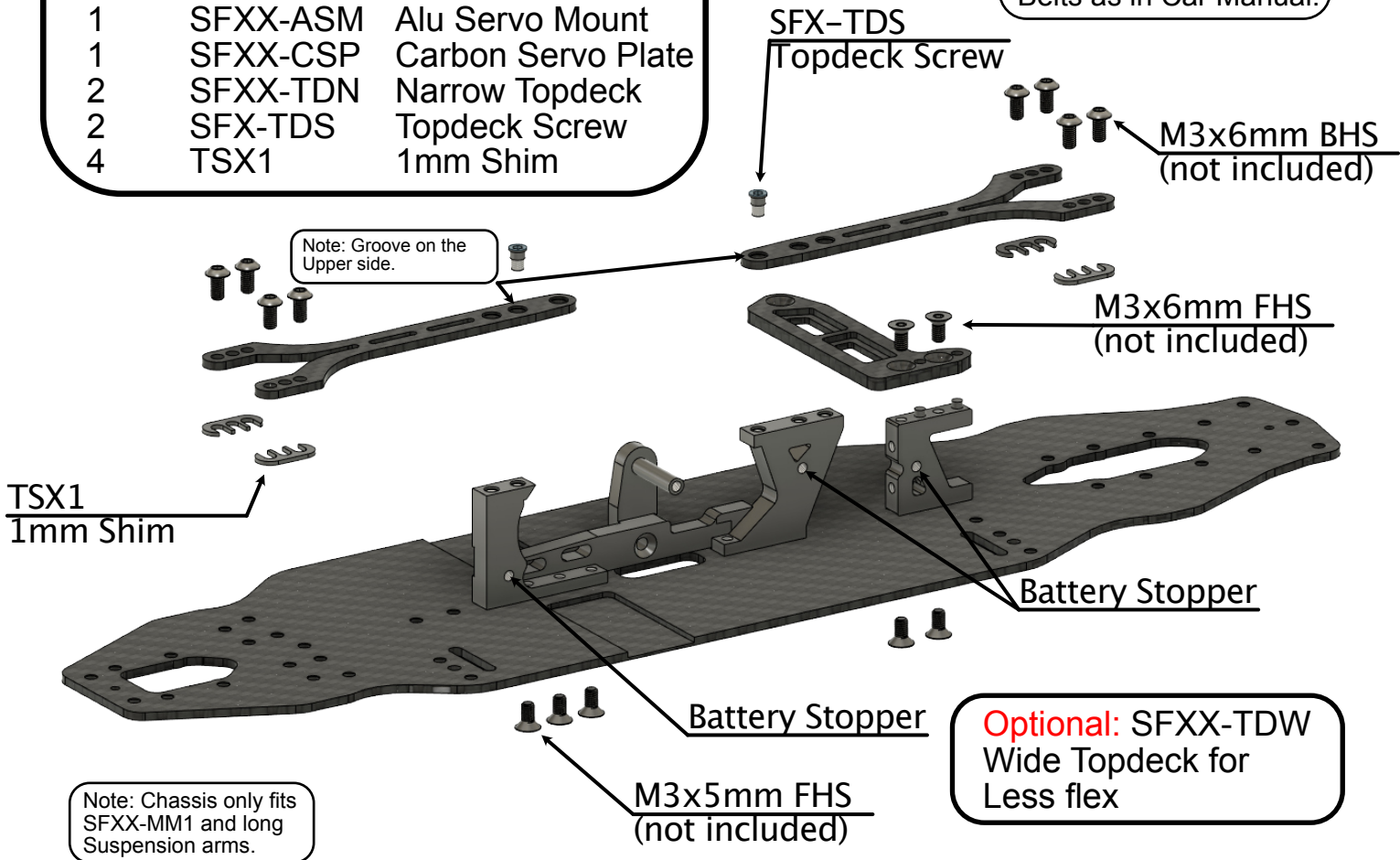


# T4 2020 SFX Conversion Manual and Set-up

Qty.	Nr.	Name
1	SFXX-CC1	Chassis
1	SFXX-MM1	Motormount
1	SFXX-ASM	Alu Servo Mount
1	SFXX-CSP	Carbon Servo Plate
2	SFXX-TDN	Narrow Topdeck
2	SFX-TDS	Topdeck Screw
4	TSX1	1mm Shim

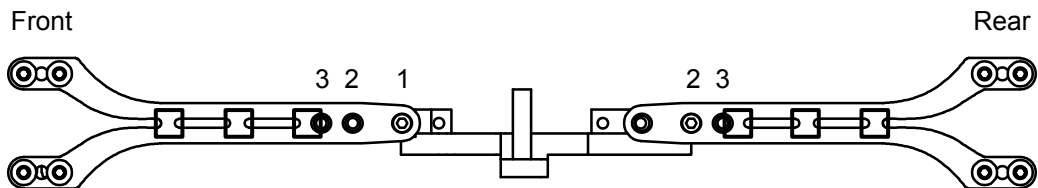
Note: Assemble Motor Mount, Spur Gear and Belts as in Car Manual.



**Optional:** SFXX-TDW Wide Topdeck for Less flex

Note: TSX1 not Included, instead 8 Standard S1 1mm shims Are included.

## Flex Set-up Sheet



- SFXX-TDN Narrow Topdeck
- SFXX-TDW Wide Topdeck

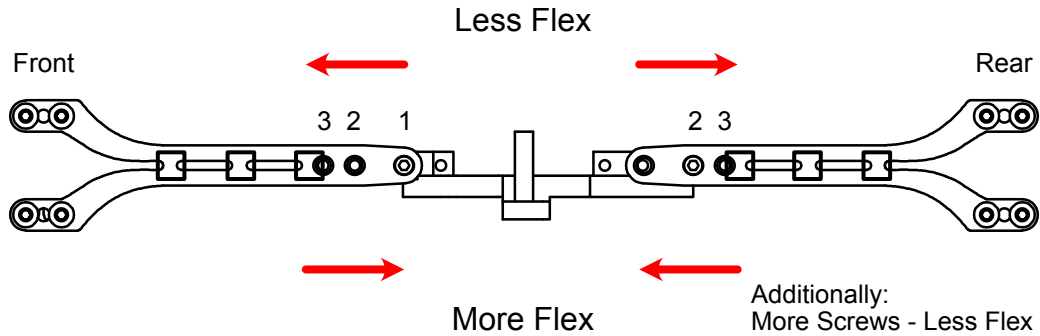
Notes:



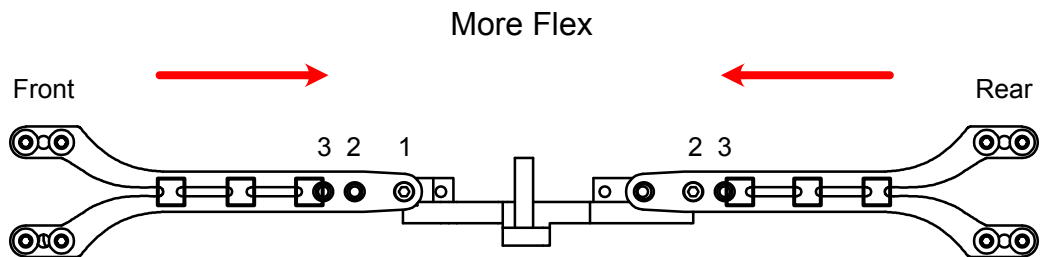
# T4 2020 SFX Conversion Tips and Tricks

## Tips and Tricks

### Screws



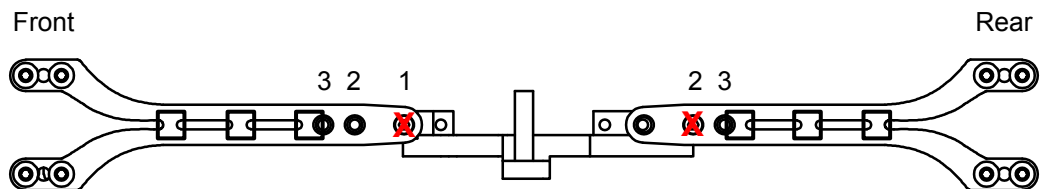
### Cutouts



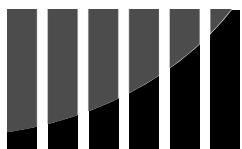
### Topdecks

- More Flex  **SFXX-TDN Narrow Topdeck**
- Less Flex  **SFXX-TDW Wide Topdeck**

### Standard Setting



**SFXX-TDN Narrow Topdeck**



Low to High Grip

