



# IRIS

# ONE

# .2

IRIS ONE.2 COMPETITION TOURING CAR KIT

#RACEIRIS

## **Thank you for purchasing the IRIS ONE.2 Touring Car.**

*Building on everything we learned with the IRIS ONE and the race-proven ONE.1, the ONE.2 represents a focused evolution: a new pullrod concept, refined suspension geometry and many detail changes that lower the center of gravity and overall weight while making setup simpler and more repeatable. Our team drivers continued to push the platform at major events world-wide, and their feedback shaped every update you find here.*

*Enjoy the IRIS ONE.2 and share the journey with us on and off the track. For setup sheets, PDF manuals and further information, please visit our website.*

### **Features**

- *New pullrod system for a lower damper position and reduced center of gravity*
- *Improved and optimized suspension geometry for increased corner speed and consistency*
- *Lower overall weight for quicker response and better balance*
- *Integrated, adjustable upstop limiter front and rear*
- *Adjustable suspension progressiveness*
- *Adjustable upper arm length*
- *Easy-to-set fixed caster position using separately sold tuning parts*

### **Technical data**

- *Scale/class: 1/10 electric 4WD touring car*
- *Suspension: double wishbone with pullrod-actuated dampers, adjustable progressiveness and upper arm length*
- *Chassis: carbon fiber main plate with flex-optimized layout*
- *Upstop system: integrated and individually adjustable front and rear (optional)*
- *Caster: fixed positions achievable via optional tuning parts*
- *Weight: reduced by about 20g compared to the ONE.1*

*For setups, PDF manuals or other information, please visit our website [www.iris-racing.com](http://www.iris-racing.com):*



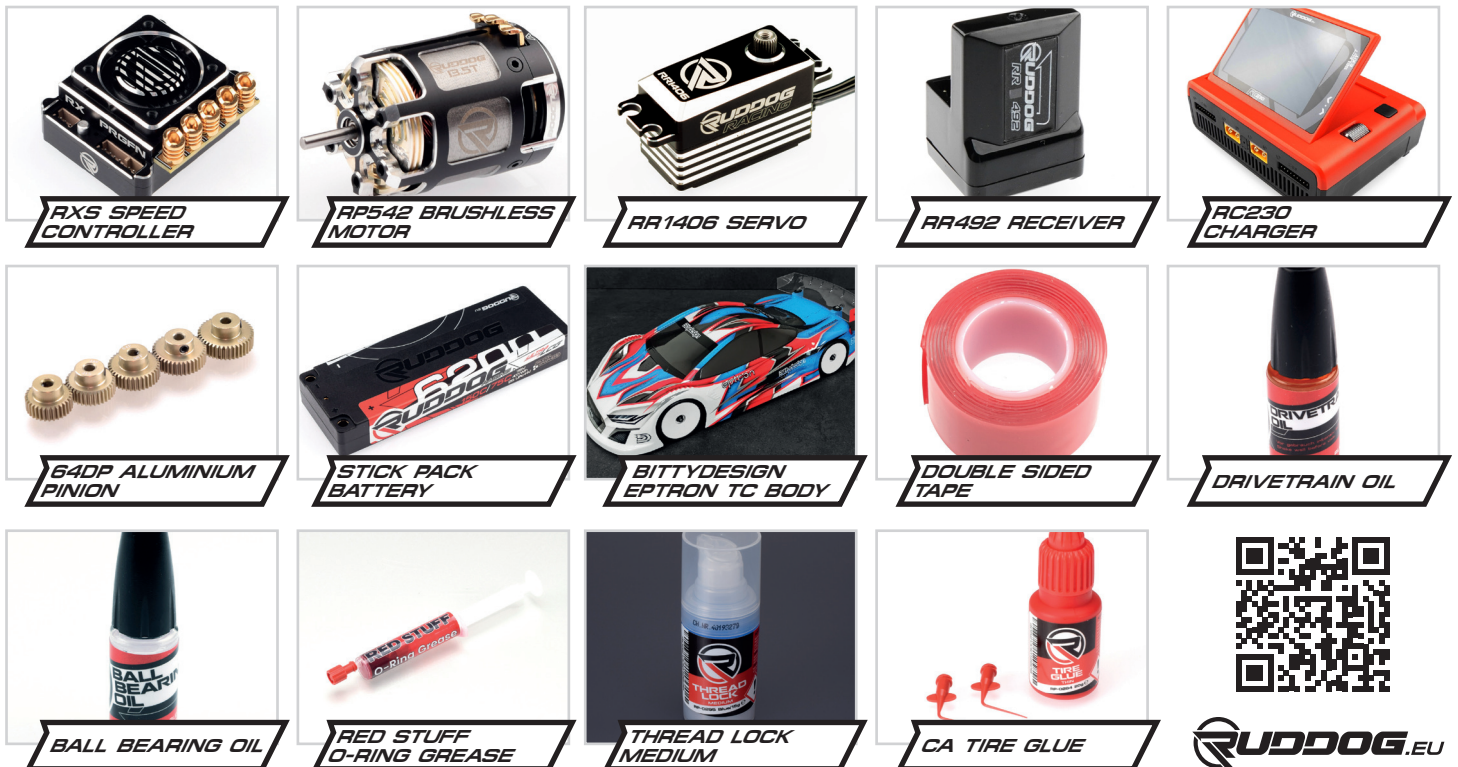
# GEAR UP WITH RUDDOG:

THE ESSENTIAL TOOLS FOR YOUR IRIS ONE.2.



# RACE AHEAD WITH RUDDOG:

ESSENTIAL RACING EQUIPMENT FOR YOUR IRIS ONE.2.



1.1

SPOOL

M3x8mm CS

x2  
M3x8mm  
Countersunk Screw

IRIS-32005

IRIS-32002

M3x8mm CS



Please note  
direction.  
Steep angle  
inside

1.2

DIFFERENTIAL

Lubricate using  
RUDDOG Red Stuff  
Grease or similar.

IRIS-32004

IRIS-32000

IRIS-32011

IRIS-83000

IRIS-32006

IRIS-32008

IRIS-32001

1.2

DIFFERENTIAL

Lubricate using  
RUDDOG Red Stuff  
Grease or similar.

IRIS-32004

IRIS-32000

IRIS-32011

IRIS-83000

IRIS-32006

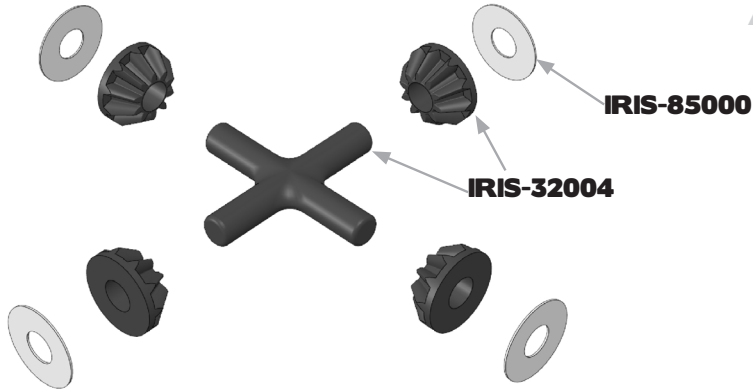
IRIS-32008

IRIS-32001



1.2

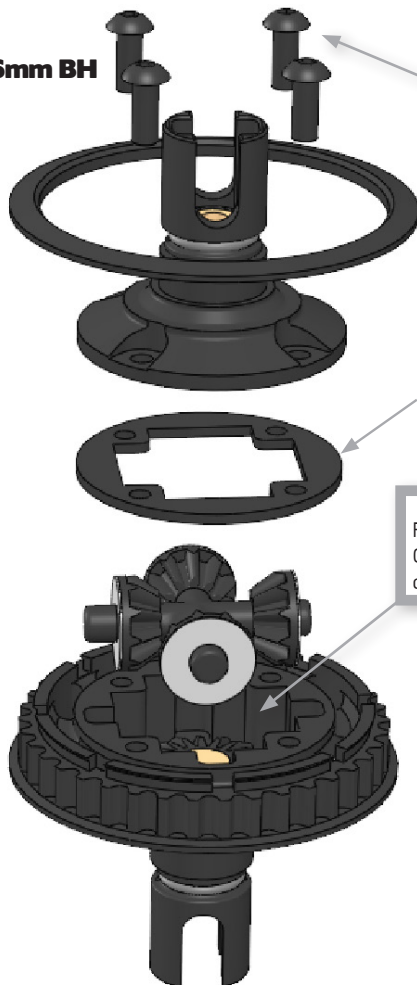
DIFFERENTIAL



1.2

DIFFERENTIAL

**M2.5x6mm BH**



Do not overtighten.

**x4**  
M2.5x6mm  
Button Head Screw

**IRIS-32011**

Fill with 1.0g of Silicone Oil. We recommend 5k cst as starting point.

## 1.3

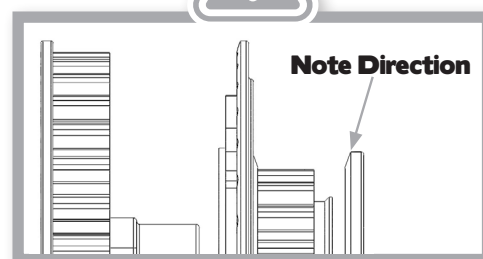
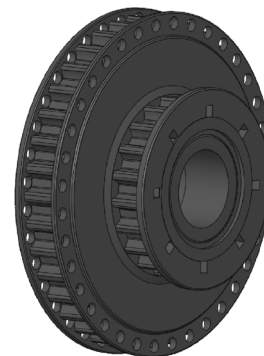
### FRONT MIDDLE GEAR



Front version has a round shape.



IRIS-32007



## 1.4

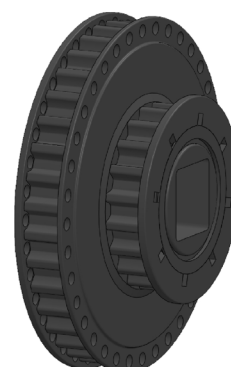
### REAR MIDDLE GEAR



Rear version has a square shape.

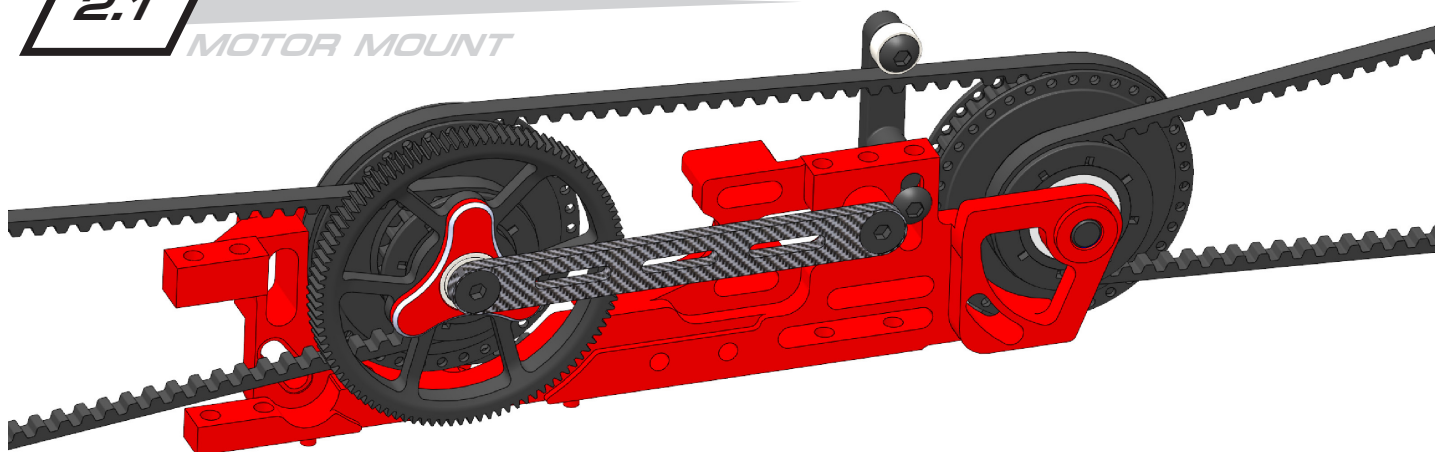


IRIS-32007



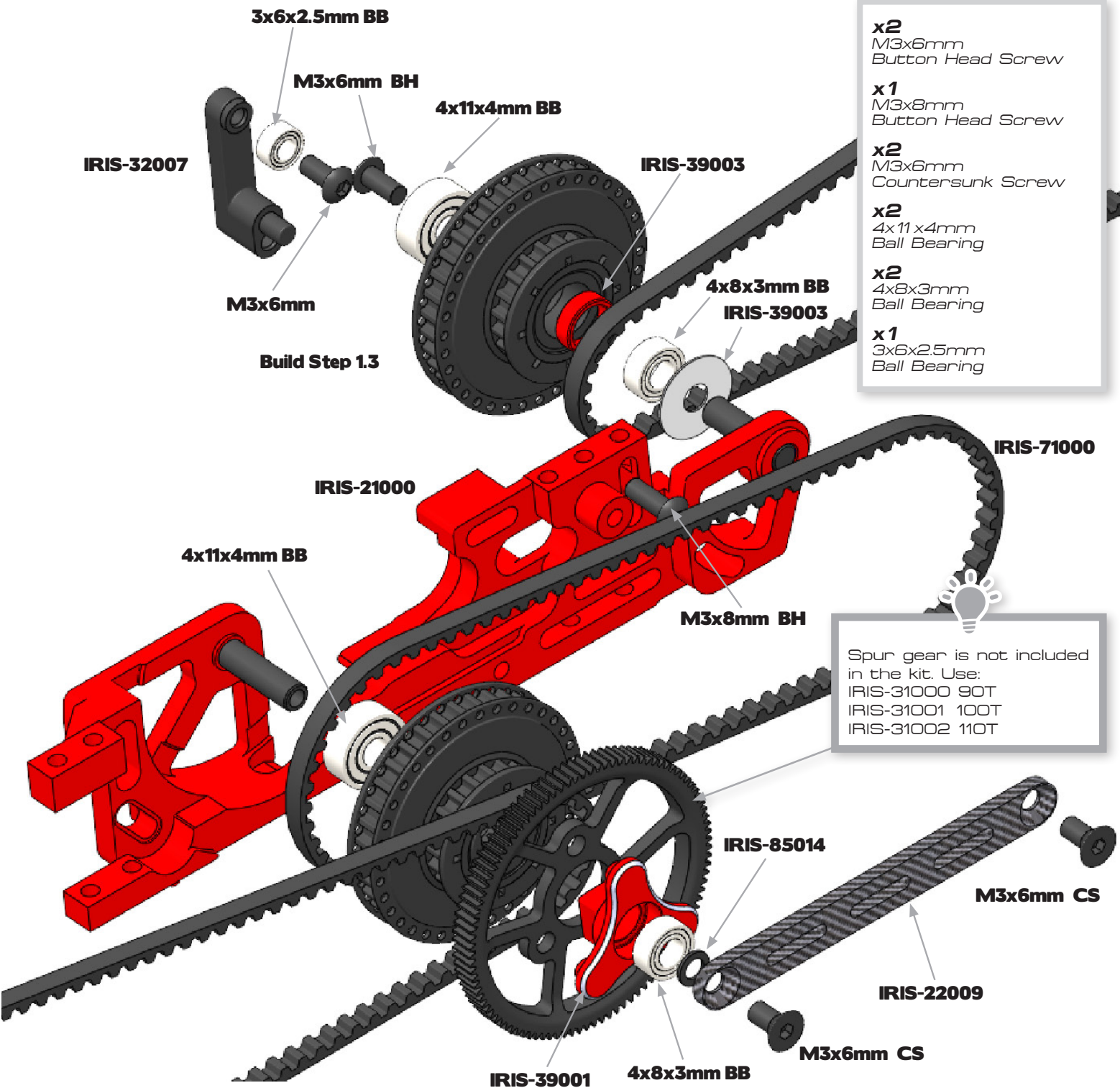
## 2.1

### MOTOR MOUNT



## 2.1

### MOTOR MOUNT



## 2.2

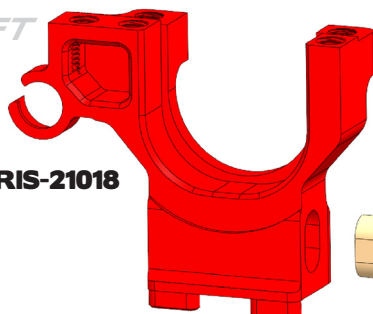
### BULKHEAD LEFT

x4  
M3x3mm  
Set Screw



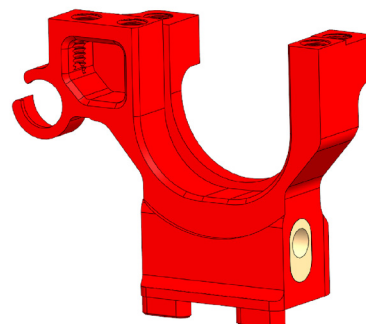
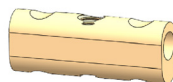
Build this step twice !

IRIS-21018



M3x3mm SS

IRIS-21005



## 2.3

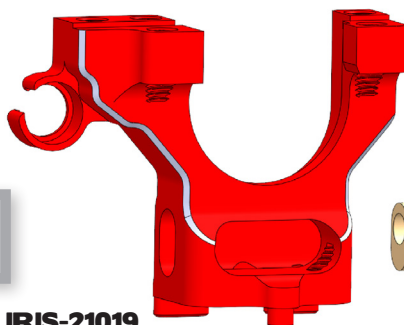
### BULKHEAD RIGHT

x4  
M3x3mm  
Set Screw



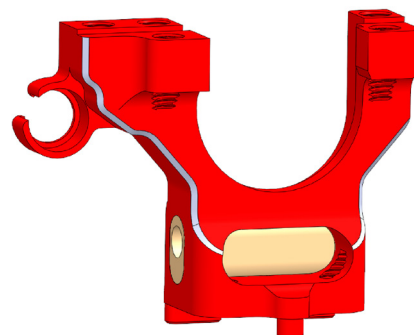
Build this step twice !

IRIS-21019



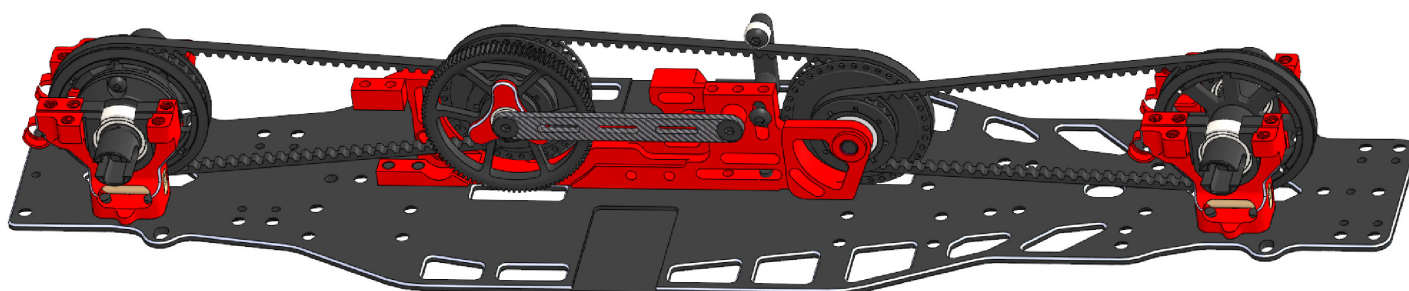
M3x3mm SS

IRIS-21005



## 3.1

### CHASSIS







Start with #1 inserts with the number facing the direction of the motor / center of the chassis to get the correct belt tension.



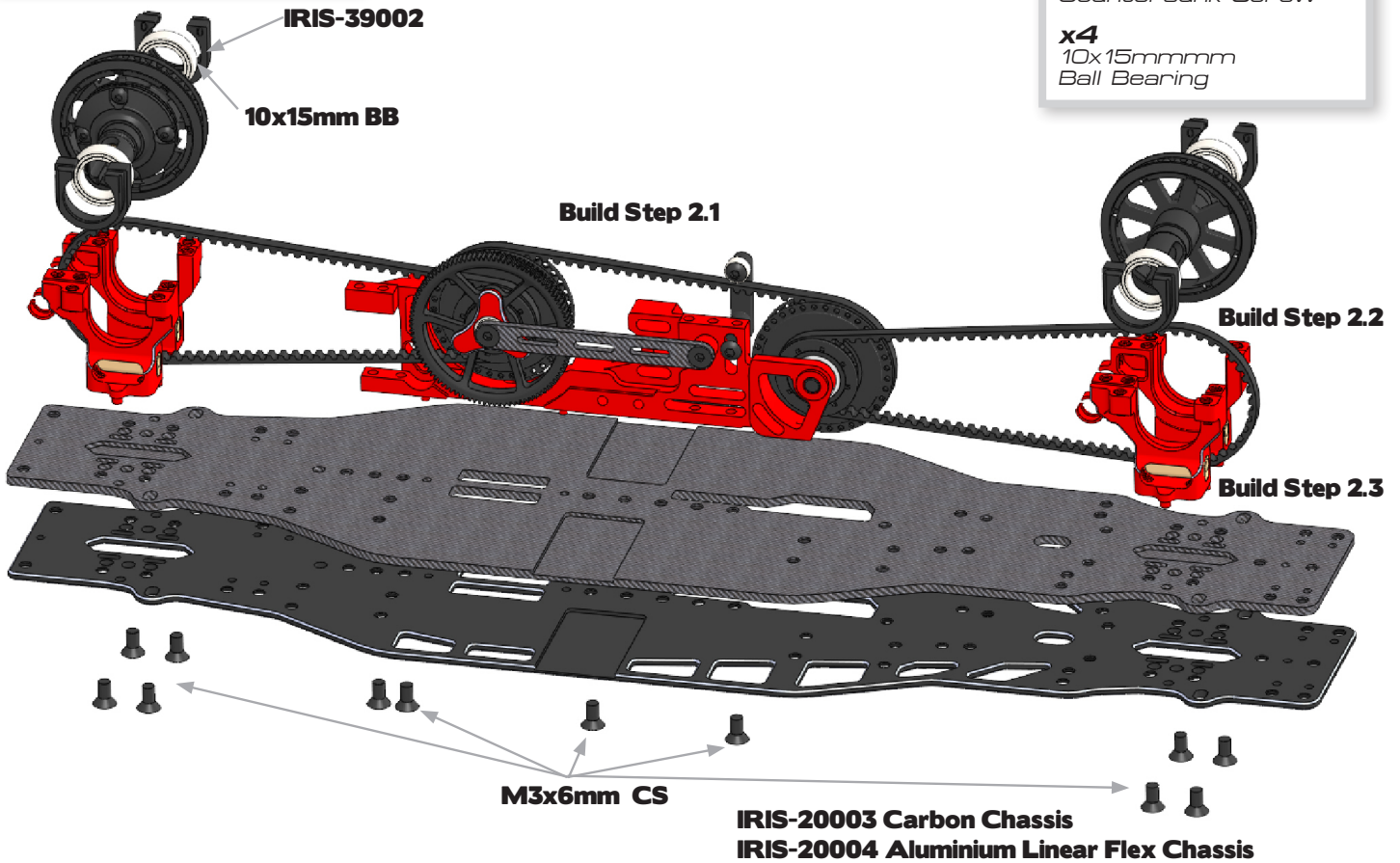
Internal drive ratio is 1.9

## 3.1

### CHASSIS

**x12**  
M3x6mm  
Countersunk Screw

**x4**  
10x15mmmm  
Ball Bearing



## 3.2

### TOPDECK

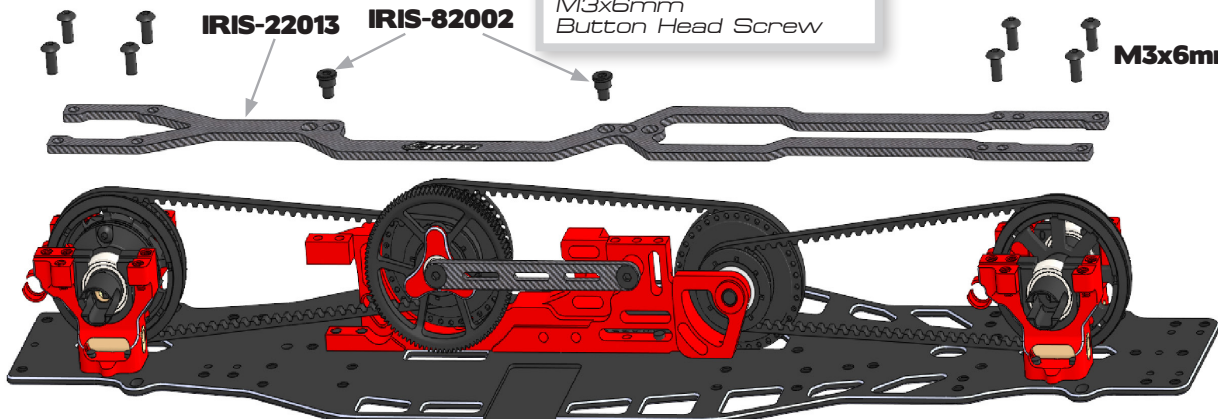
**M3x6mm BH**

**IRIS-22013**

**IRIS-82002**

**x8**  
M3x6mm  
Button Head Screw

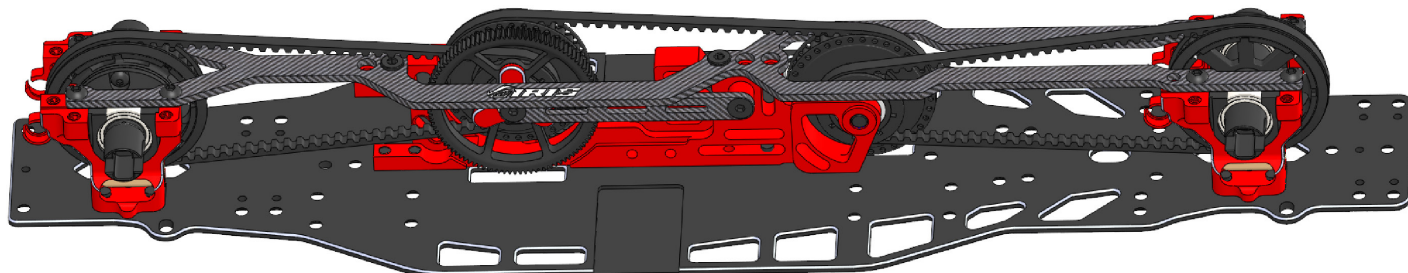
**M3x6mm BH**





## 3.2

### TOPDECK MOUNTED

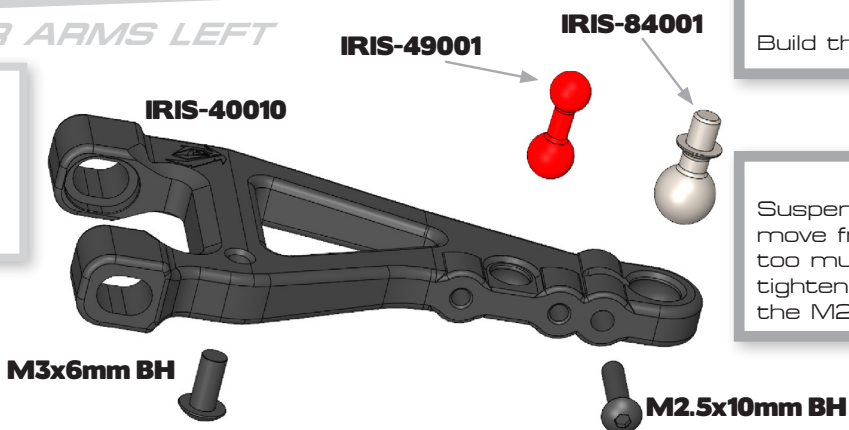


## 4.1

### LOWER ARMS LEFT

**x2**  
M2.5x10mm  
Button Head Screw

**x2**  
M3x6mm  
Button Head Screw

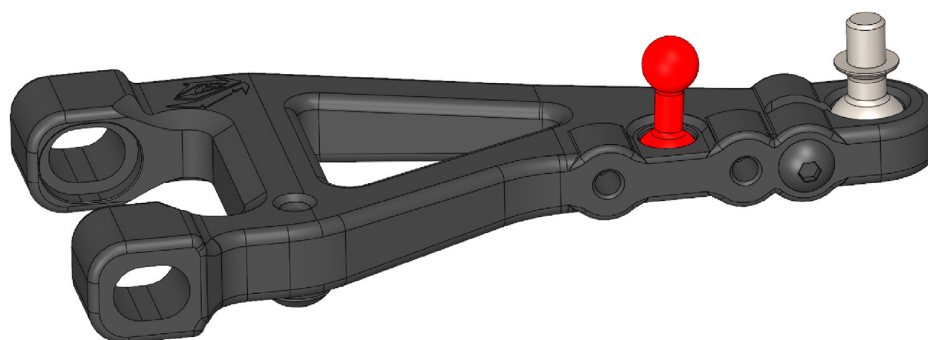


Build this step twice !

Suspension balls should move freely, yet have not too much play. Adjust by tightening or loosening the M2.5x10mm screw.

## 4.1

### LOWER ARMS LEFT



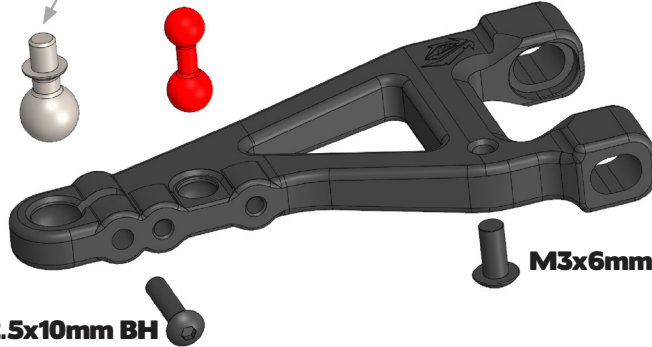


Build this step twice !



Suspension balls should move freely, yet have not too much play. Adjust by tightening or loosening the M2.5x10mm screw.

IRIS-49001  
IRIS-84001



M2.5x10mm BH

M3x6mm BH

4.1

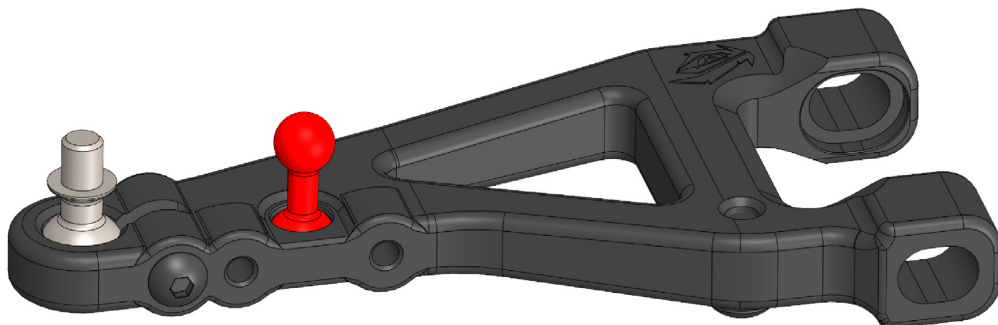
LOWER ARMS RIGHT

x2  
M2.5x10mm  
Button Head Screw

x2  
M3x6mm  
Button Head Screw

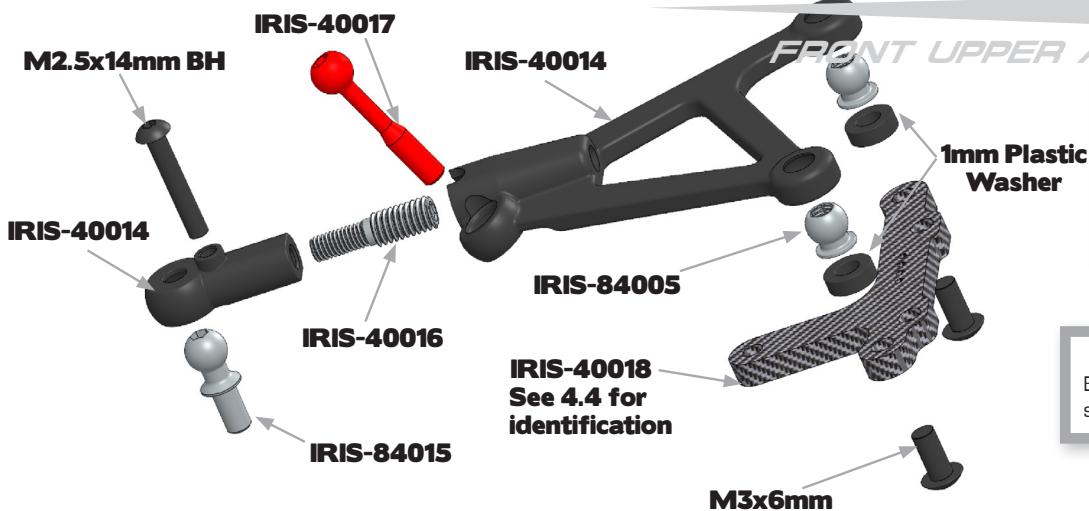
4.1

LOWER ARMS RIGHT



4.2

FRONT UPPER ARMS



x4  
M3x6mm  
Button Head Screw

x2  
M2.5x14mm  
Button Head Screw



Build left and right version.

4.2

FRONT UPPER ARMS ASSEMBLED



4.3

REAR UPPER ARMS

x4  
M3x6mm  
Button Head Screw

x2  
M2.5x14mm  
Button Head Screw

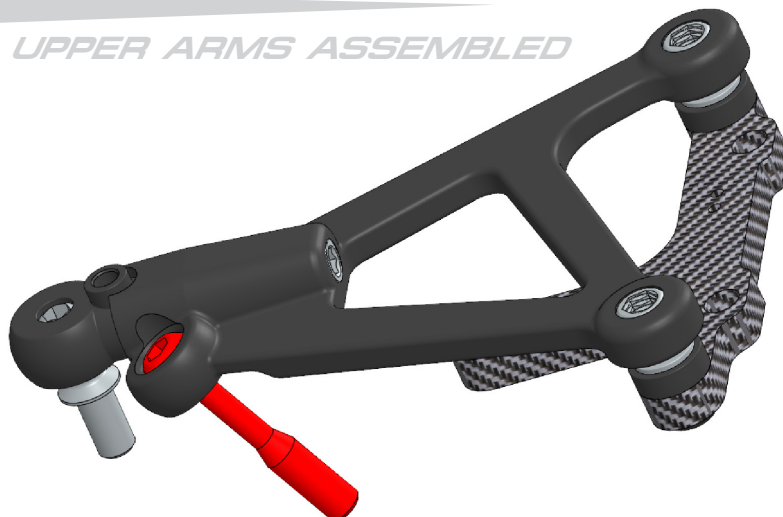


Build left and right version.



4.3

REAR UPPER ARMS ASSEMBLED



## 4.4

## OPTIONAL UPPER SUSPENSION MOUNTS OVERVIEW

# IRIS-40018

## 4 DEGREE KIT

**IRIS-40019**  
**4 DEGREE**  
**-1mm**

**IRIS-40020**  
**5 DEGREE**

**IRIS-40021**  
**5 DEGREE**  
**-1mm**

# FRONT

# REAR

# IRIS-40022 2 DEGREE KIT

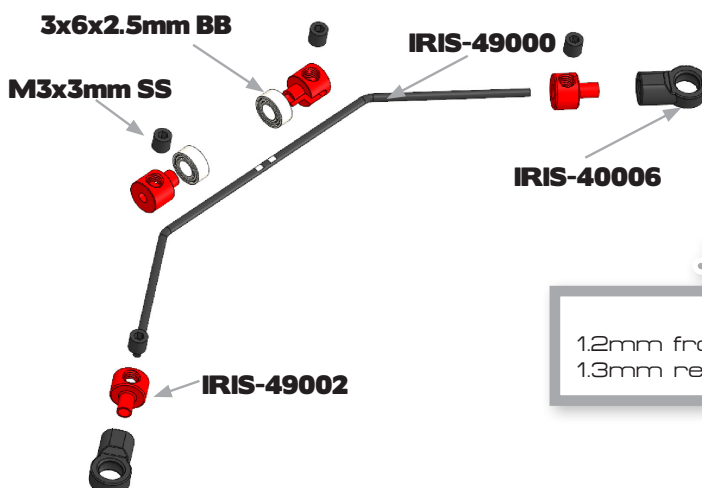
**IRIS-40023**  
**2 DEGREE**  
**-1mm**

**IRIS-40024**  
**4 DEGREE**

**IRIS-40025**  
**4 DEGREE**  
**-1mm**

## 4.5

**ANTI-ROLL BAR**



**x8**  
M3x3mm  
Set Screw

**x4**  
3x6x2.5mm  
Ball Bearing

1.2mm front anti-roll bar  
1.3mm rear anti-roll bar

Build this step twice !



## 4.6

### MOUNTING OF FRONT LOWER

x2  
M3x3mm  
Set Screw



Use a 3.0mm arm reamer to increase the insert hole size until the hinge pin moves freely.

IRIS-41000

Build Step 4.5

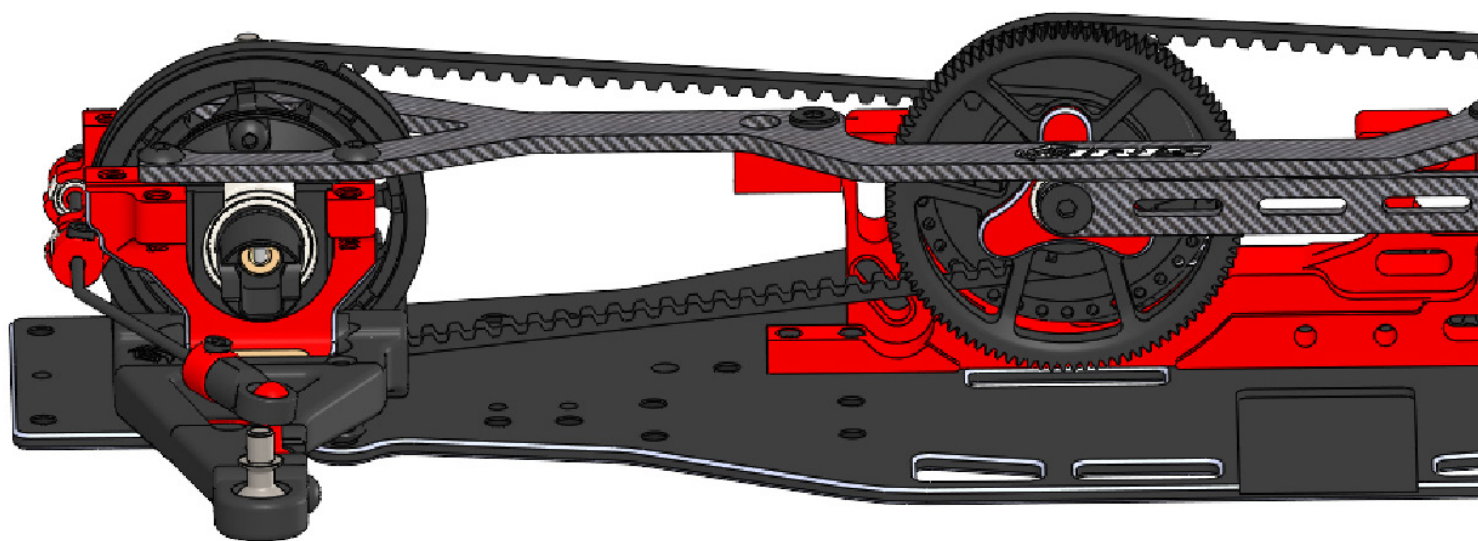
Build Step 4.1

IRIS-40010

M3x3mm SS

## 4.6

### LOWER ARMS MOUNTED





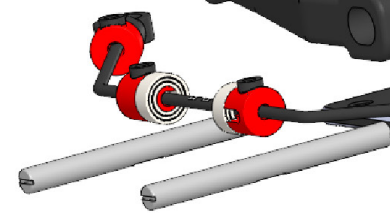
4.6

## MOUNTING OF REAR LOWER ARMS

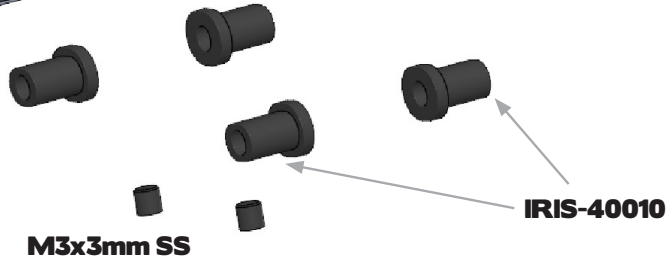
x2  
M3x3mm  
Set Screw

Build Step 4.5

Build Step 4.1

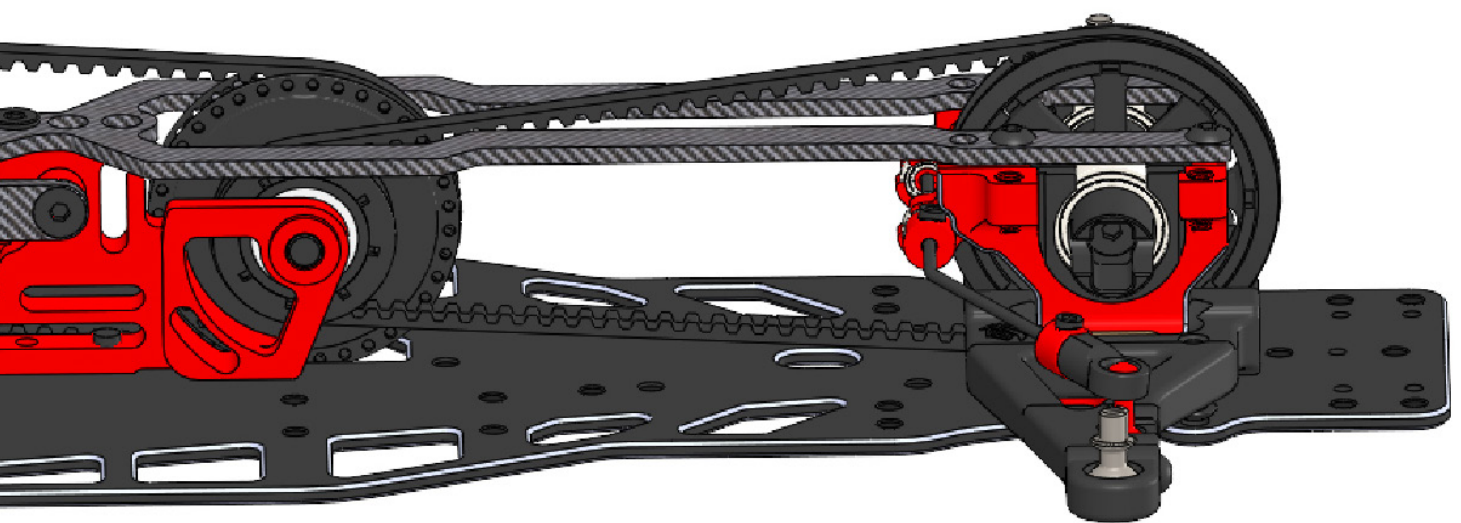


IRIS-41000



M3x3mm SS

IRIS-40010

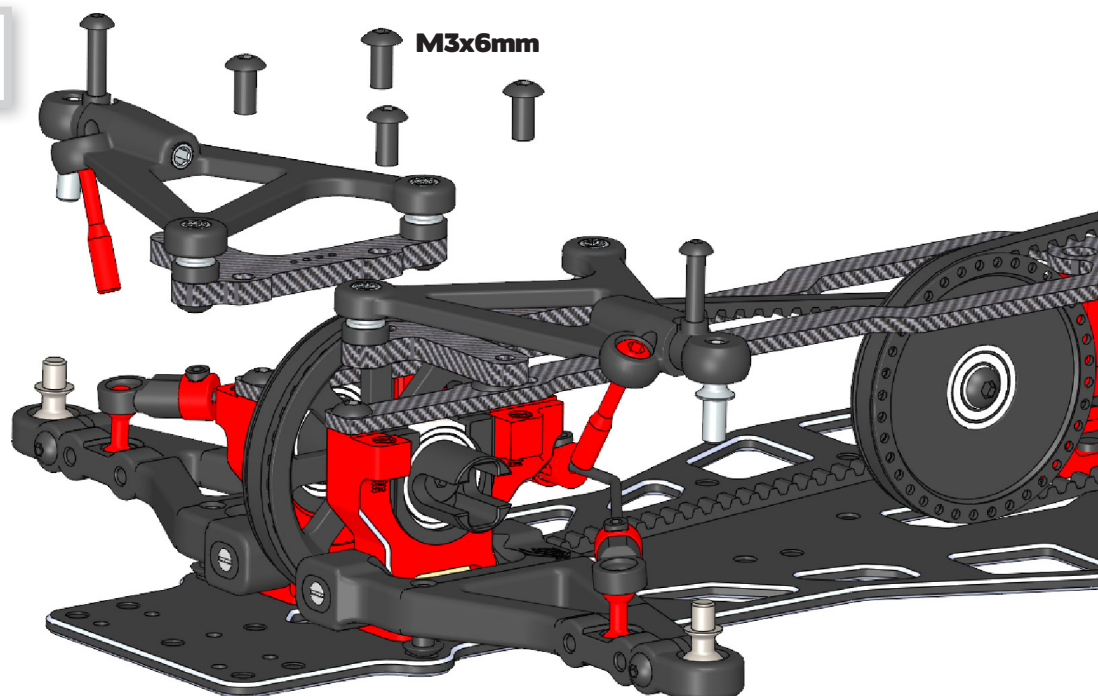


## 4.7

### MOUNTING OF FRONT UPPER ARMS

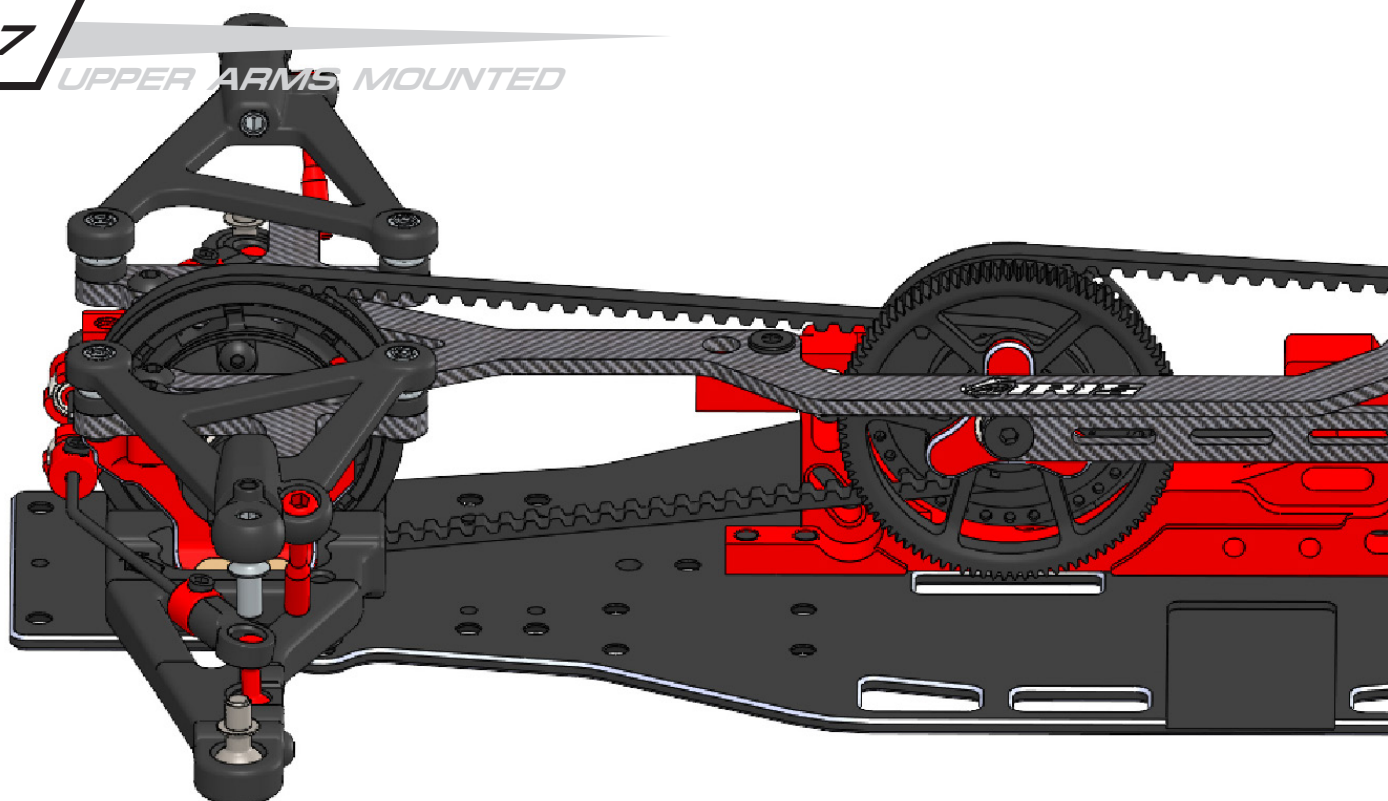
**x4**  
M3x6mm  
Button Head Screw

**Build Step 4.2**



## 4.7

### UPPER ARMS MOUNTED



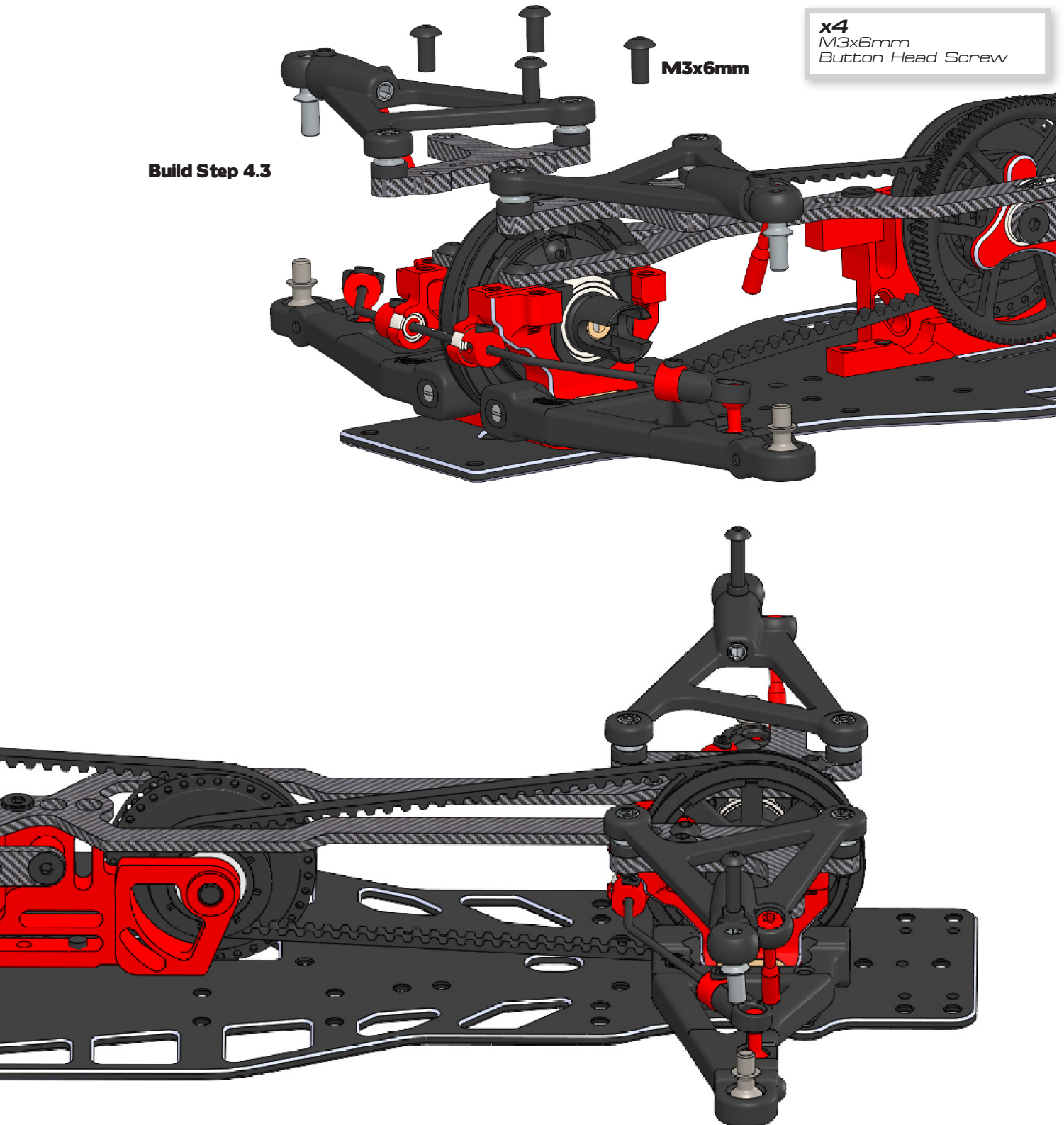
4.7

## MOUNTING OF REAR UPPER ARMS

Build Step 4.3

M3x6mm

x4  
M3x6mm  
Button Head Screw





## 5.1

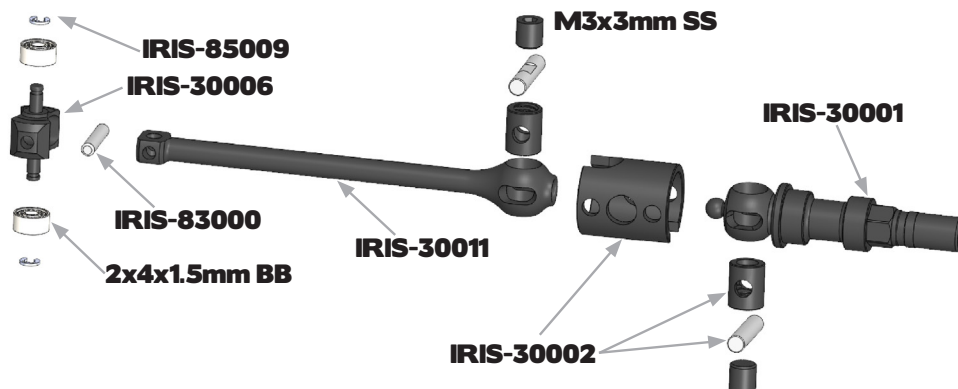
### FRONT DRIVESHAFT

**x2**  
M3x3mm  
Set Screw

**x2**  
2x4x1.5mm  
Ball Bearing



Build this step twice !

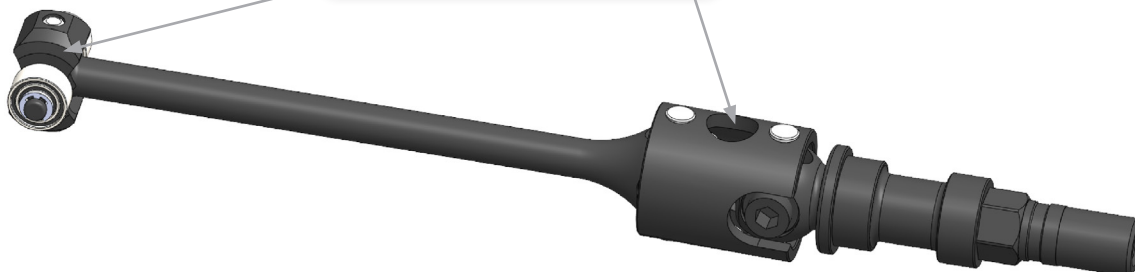


## 5.1

### FRONT DRIVESHAFT



Lubricate using RP-0494  
RUDDOG Drivetrain Oil



## 5.2

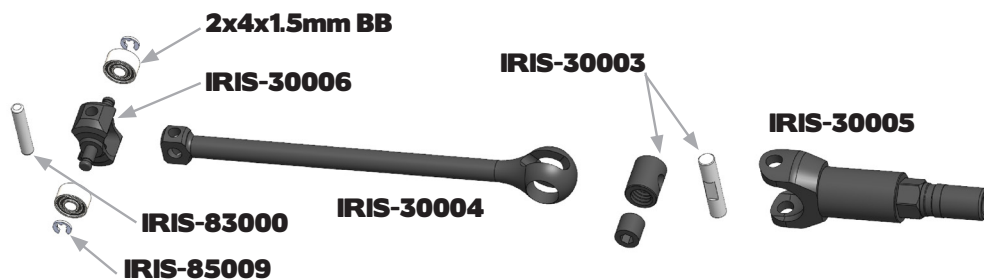
### REAR DRIVESHAFT

**x1**  
M3x3mm  
Set Screw

**x2**  
2x4x1.5mm  
Ball Bearing



Build this step twice !

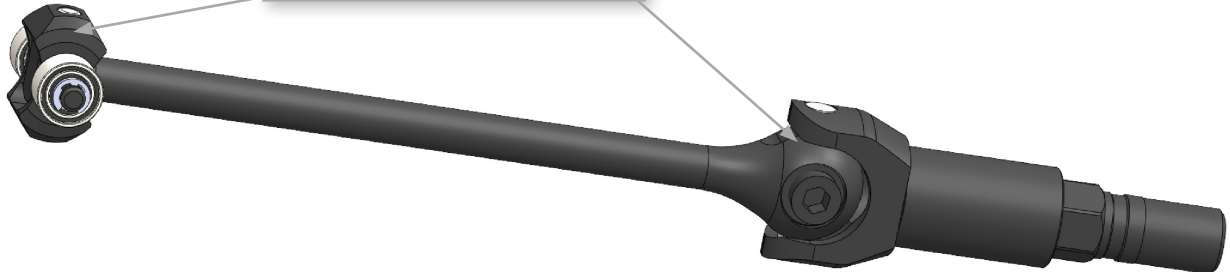




Lubricate using RP-0494  
RUDDOG Drivetrain Oil

5.2

## REAR DRIVESHAFT



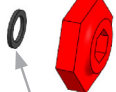
6.1

## STEERING KNUCKLE FRONT L+R

IRIS-30007

M2.5x8mm SH

M3x6mm BH



IRIS-39000



IRIS-40000



IRIS-40004

6x10x3mm BB



Build left and right version.



Build Step 5.1

**x4**  
M3x6mm  
Button Head Screw

**x2**  
M2.5x8mm  
Socket Head Screw

**x4**  
6x10x3mm  
Ball Bearing

6.1

## STEERING KNUCKLE FRONT L+R





## 6.2

### STEERING KNUCKLE REAR L+R

**x4**  
M3x6mm  
Button Head Screw

**x2**  
M2.5x8mm  
Socket Head Screw

**x4**  
6x10x3mm  
Ball Bearing

IRIS-39000

M3x6mm BH

IRIS-40011

6x10x3mm BB

IRIS-30007

M2.5x8mm SH

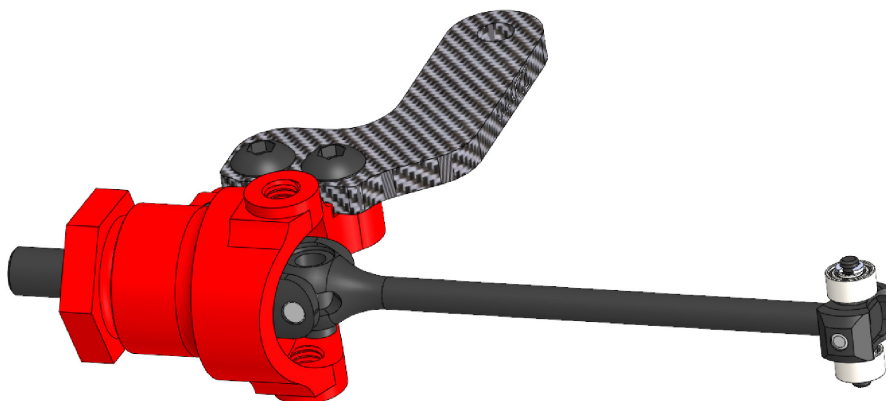


Build left and right version.  
Left shown in picture.



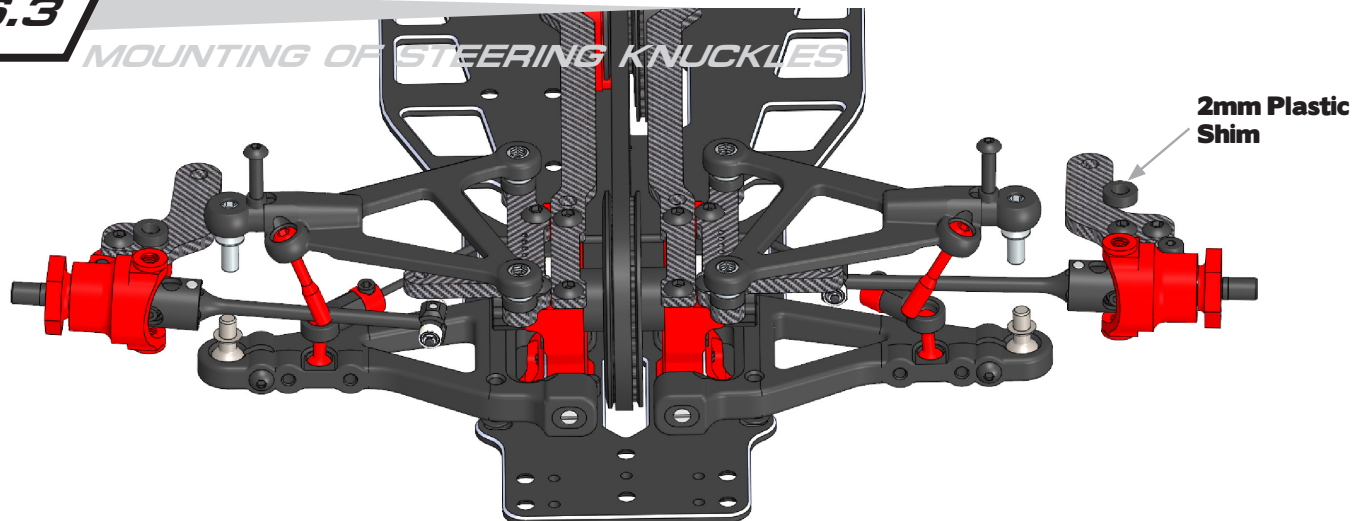
## 6.2

### STEERING KNUCKLE REAR L+R



## 6.3

### MOUNTING OF STEERING KNUCKLES

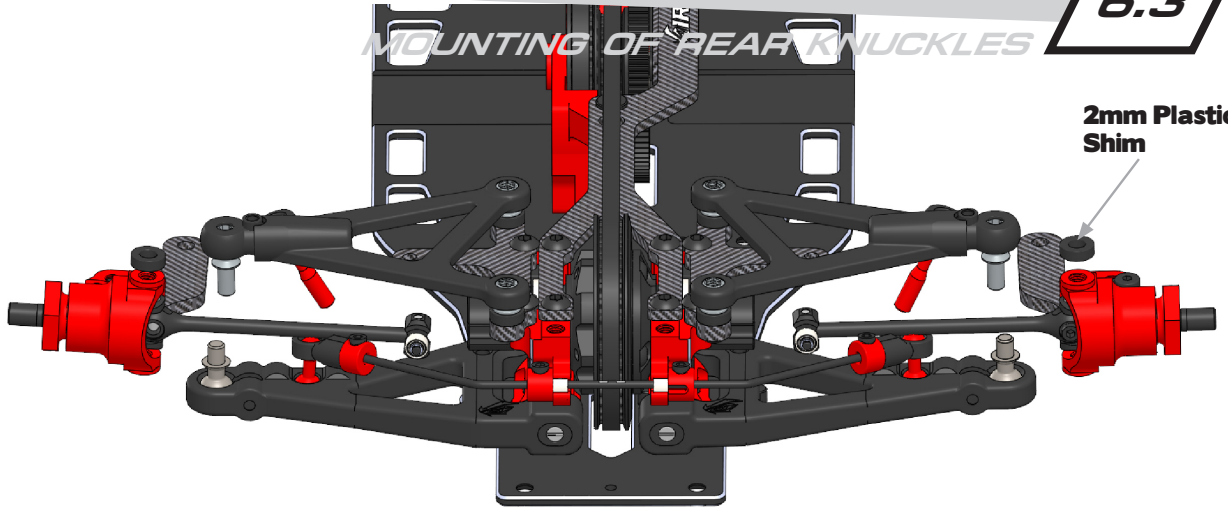


2mm Plastic  
Shim

6.3

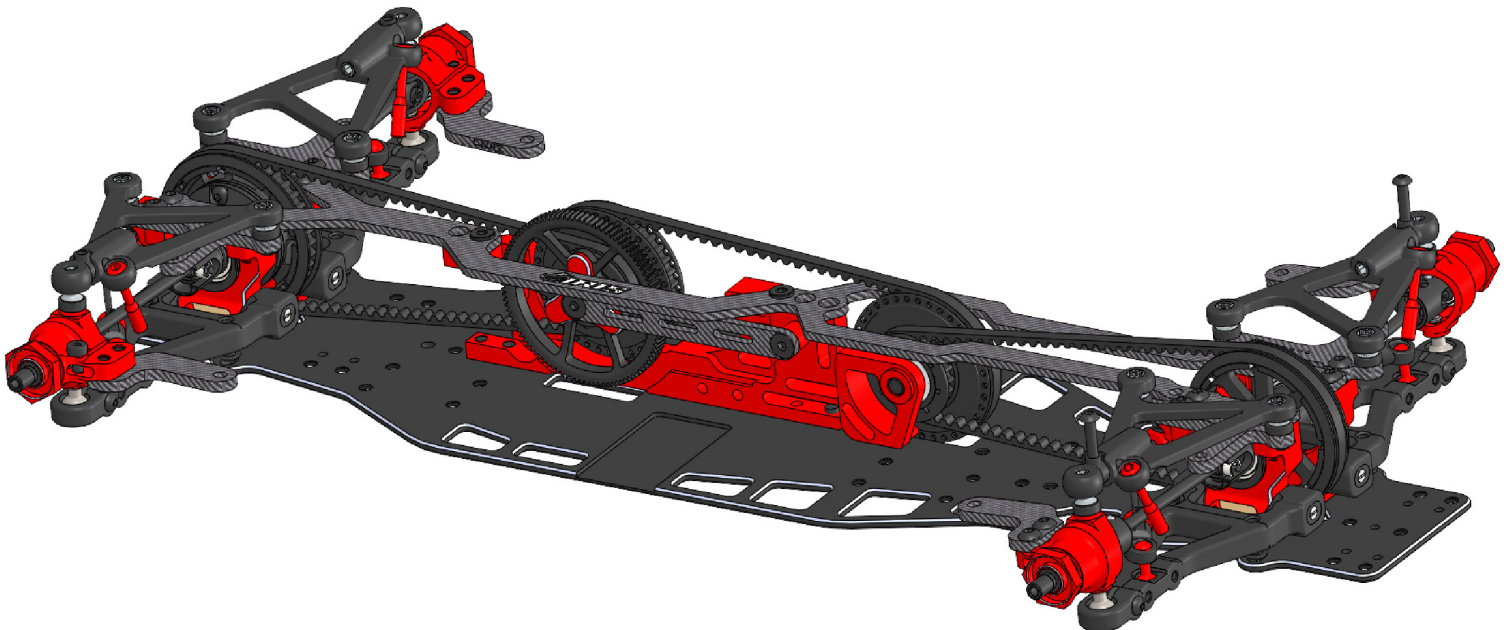
## MOUNTING OF REAR KNUCKLES

2mm Plastic Shim



6.3

## KNUCKLES MOUNTED



## 7.1

### SHOCKS

**x20**  
M2x6mm  
Counter Sunk Screw

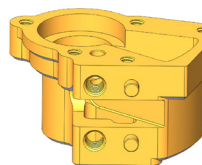


500 cst for front shocks  
800 cst for rear shocks

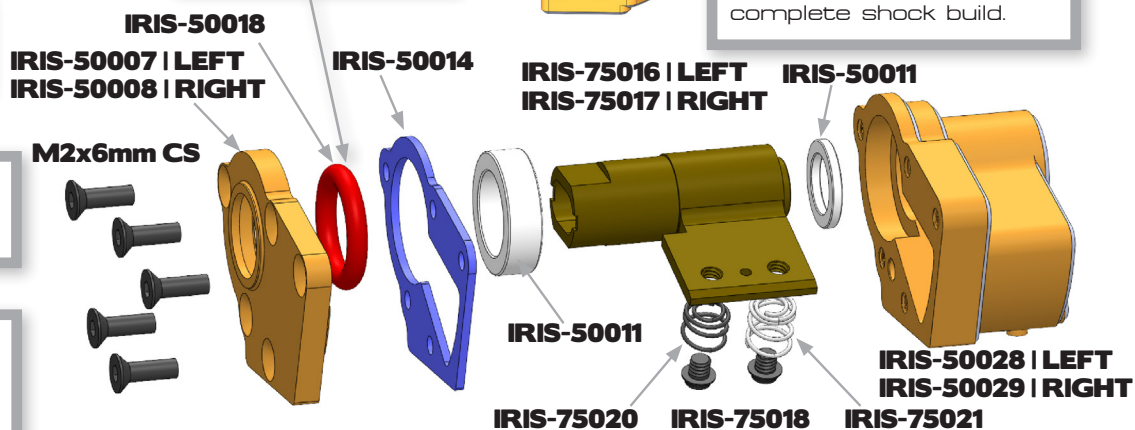


Build two sets of the left and right version. Left version in picture.

Lubricate using RUDDOG Red Stuff Grease or similar.



Insert guide shim and fill with silicone oil. Afterwards insert piston and complete shock build.



## 7.2

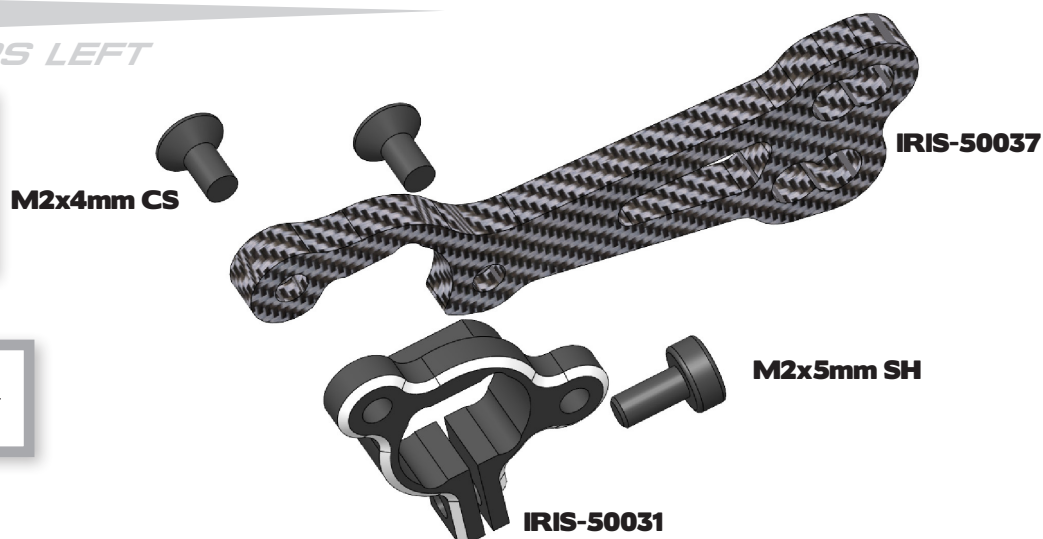
### ROCKERS LEFT

**x4**  
M2x4mm  
Counter Sunk Screw

**x2**  
M2x5mm  
Socket Head Screw



Build front and rear version



## 7.3

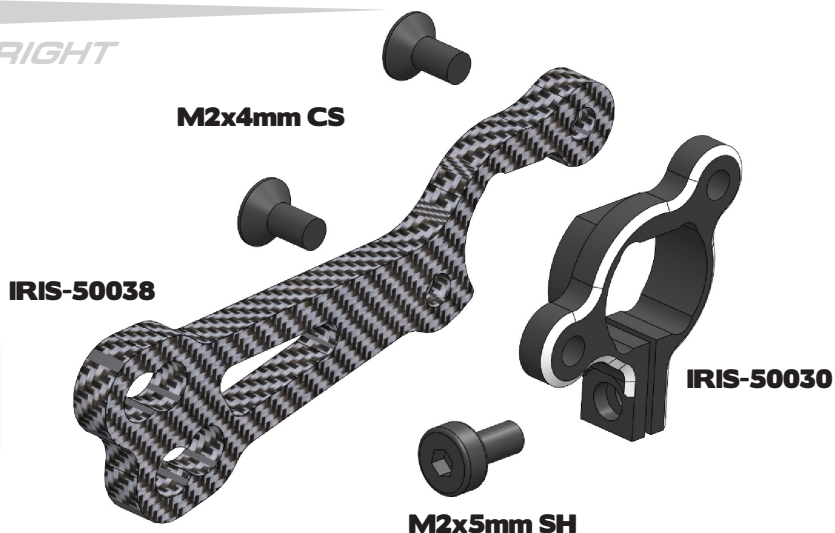
### ROCKERS RIGHT

**x4**  
M2x4mm  
Counter Sunk Screw

**x2**  
M2x5mm  
Socket Head Screw



Build front and rear version



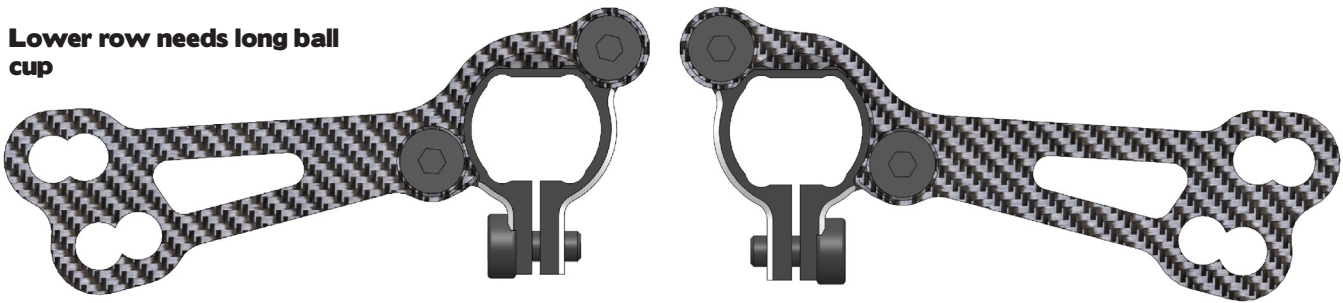
Inner hole = hard  
Outer hole = soft

Upper row = progressive  
Lower row = linear

Lower row needs long ball cup

LEFT VERSION

RIGHT VERSION



7.4

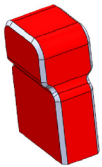
ROCKERS ASSEMBLED

7.5

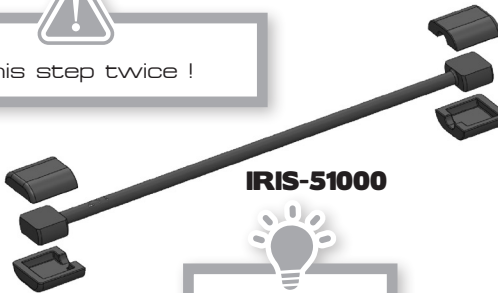
SPRING MOUNTS FRONT



Build this step twice !



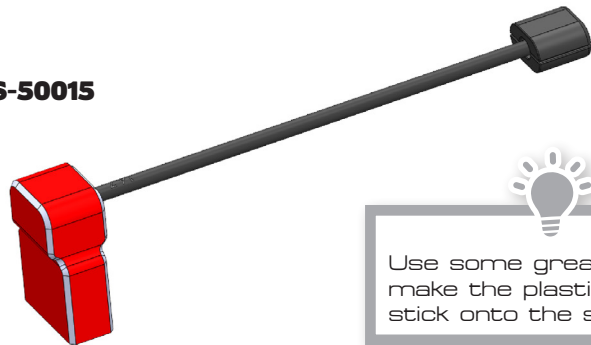
IRIS-41001



IRIS-51000

Front: C=12.9  
Rear: C=26.7

IRIS-50015

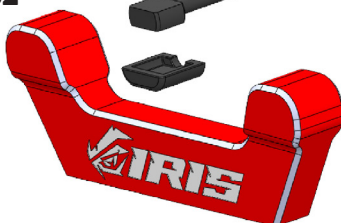


Use some grease to make the plastic inserts stick onto the spring.

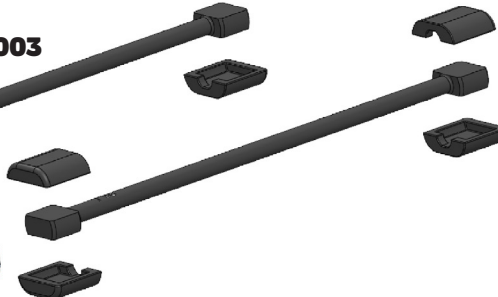
7.5

SPRING MOUNT REAR

IRIS-41002



IRIS-51003



IRIS-50015



Use some grease to make the plastic inserts stick onto the spring.

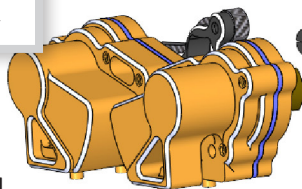


## 7.6

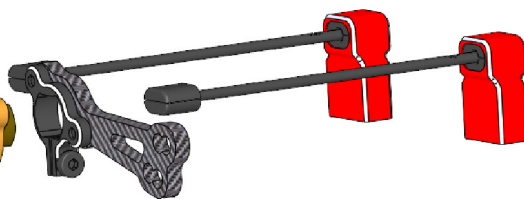
### MOUNTING OF FRONT SHOCKS

**x8**  
M3x6mm  
Counter Sunk Screw

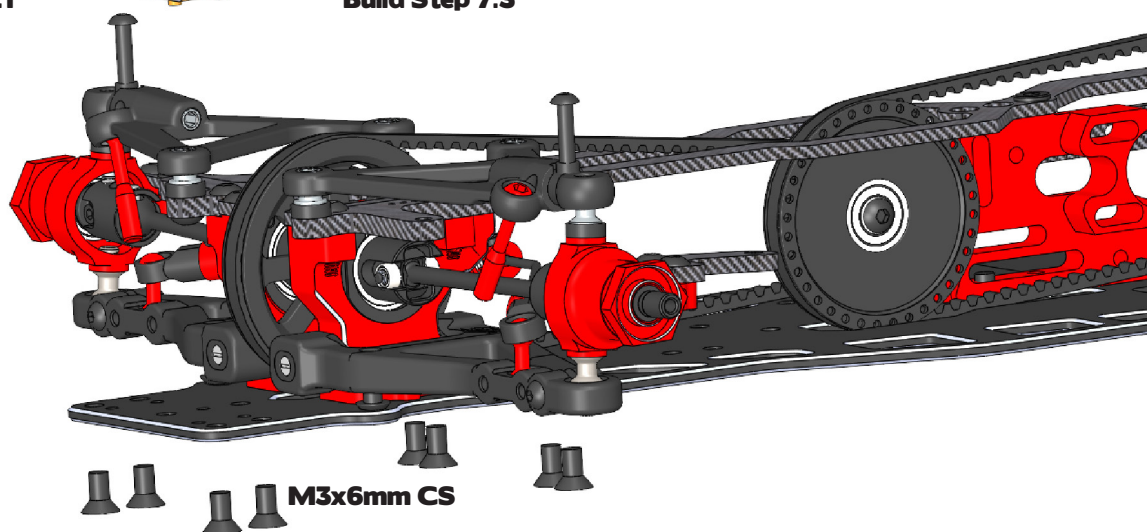
Build Step 7.1



Build Step 7.3



Build Step 7.5



M3x6mm CS

## 7.6

### MOUNTING OF REAR SHOCKS

**x8**  
M3x6mm  
Counter Sunk Screw

**x4**  
M2x4mm  
Counter Sunk Screw



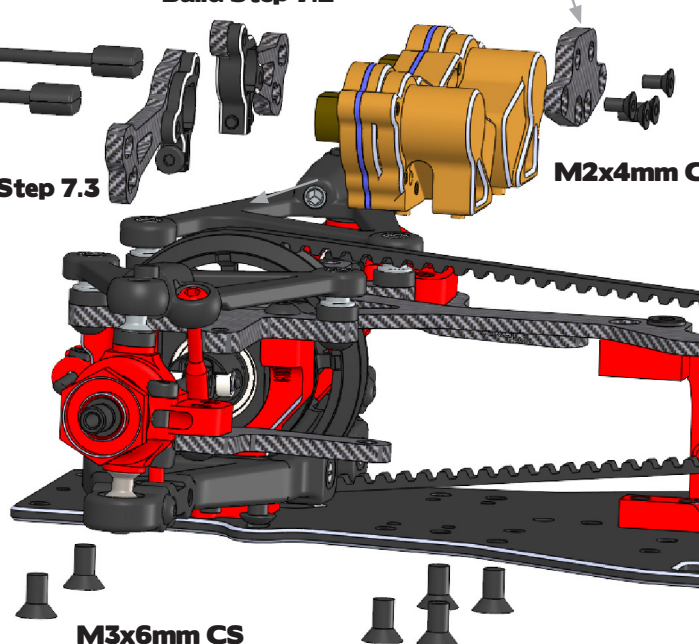
Build Step 7.5

Build Step 7.2

Build Step 7.3

IRIS-40012

M2x4mm CS

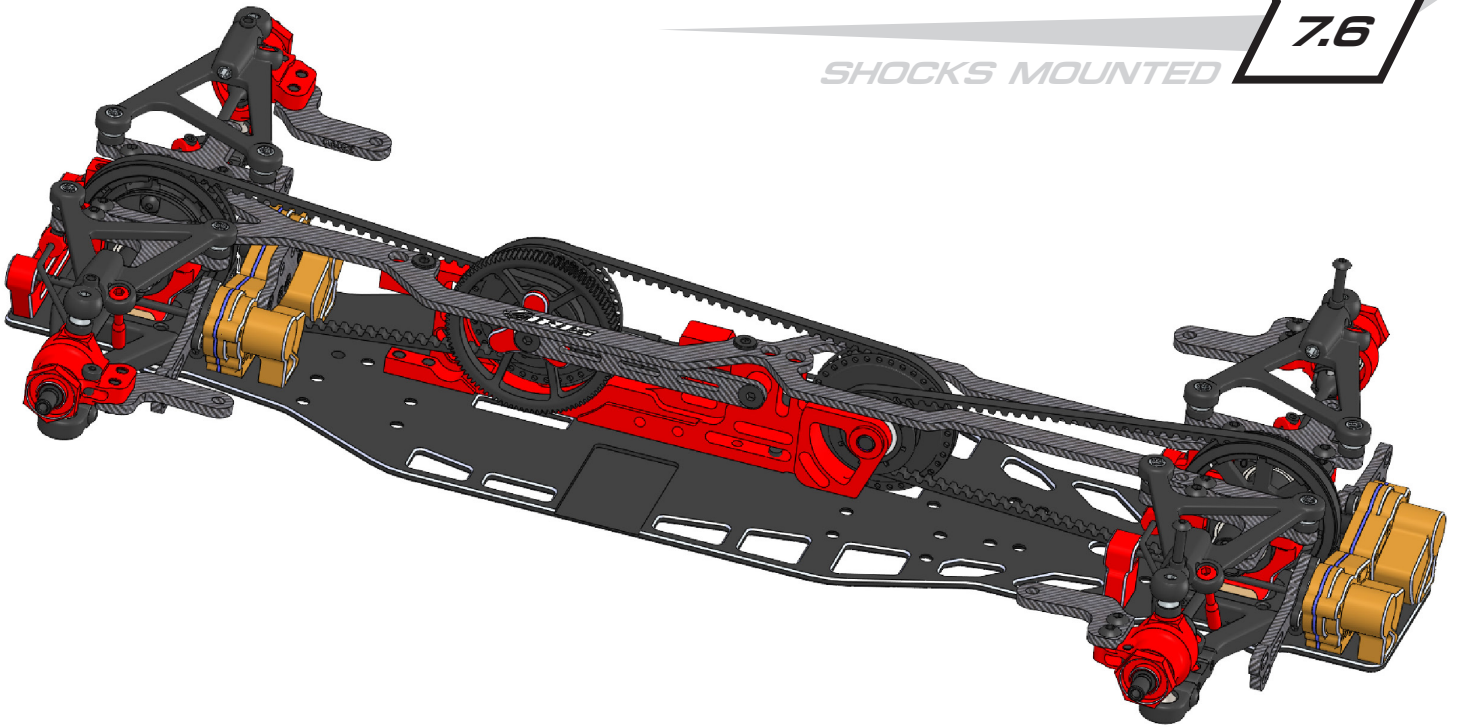


M3x6mm CS



7.6

## SHOCKS MOUNTED



8.1

## STEERING SYSTEM

IRIS-84002

M3x6mm BH

M2x6mm SH

M3x6mm BH

4x8x3mm BB

IRIS-21007

M2x4mm SH

IRIS-21008

IRIS-84002



Servo is not included. We recommend the RUDDOG Racing RR1406 servo.

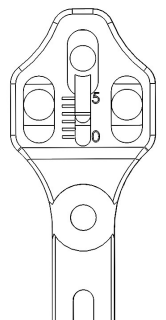
**x6**  
M3x6mm  
Button Head Screw

**x1**  
M2x6mm  
Socket Head Screw

**x2**  
M2x4mm  
Socket Head Screw

M3x6mm BH

Standard Setting

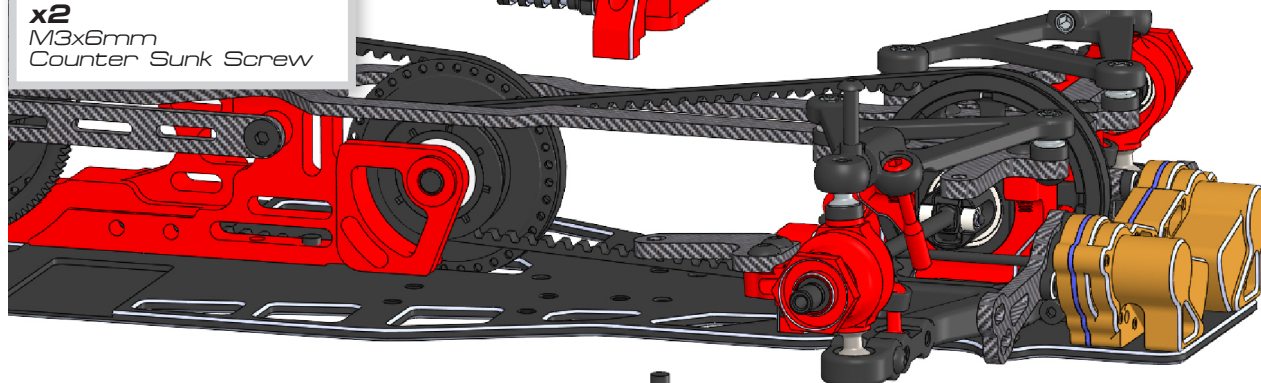


Servo Horn is not included. We recommend:  
IRIS-73000 | 25T Spline  
IRIS-73001 | 23T Spline

## 8.2

### MOUNT STEERING ON CHASSIS

x2  
M3x6mm  
Counter Sunk Screw



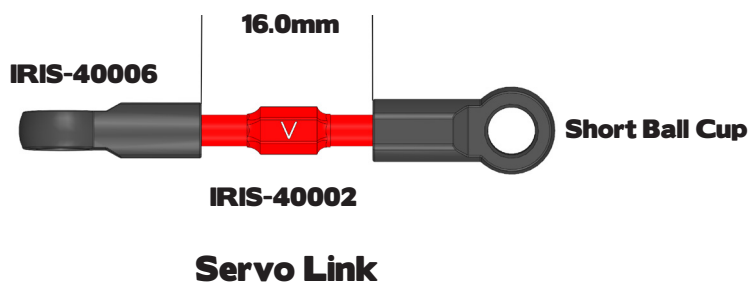
M3x6mm CS

## 9.1

### SERVO LINKS



Build the shock link 4 times!

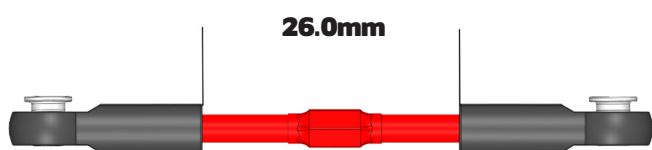
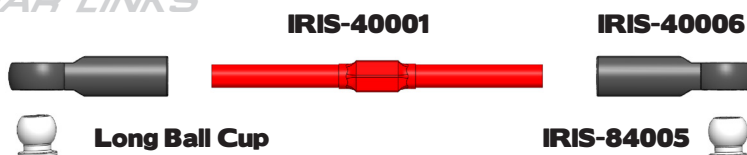


## 9.2

### FRONT AND REAR LINKS



Build this step twice!



**FRONT VERSION**



**REAR VERSION**

## 9.3

### SHOCK ROCKER BALLCUP



Build this step 4 times!

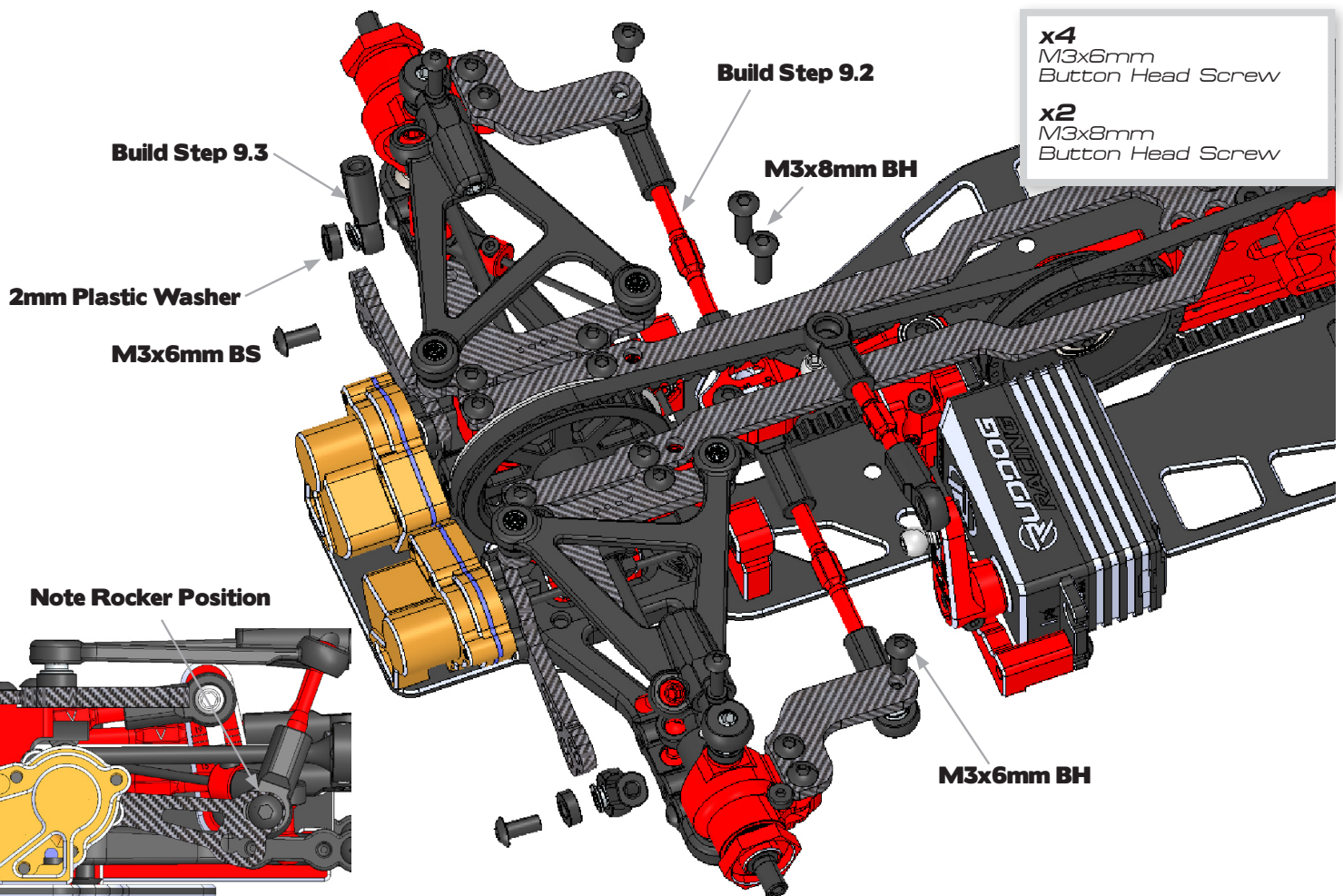


IRIS-84005

## 9.4

### MOUNTING OF FRONT LINKS

- x4**  
M3x6mm  
Button Head Screw
- x2**  
M3x8mm  
Button Head Screw





## 9.4

### MOUNTING OF REAR LINKS

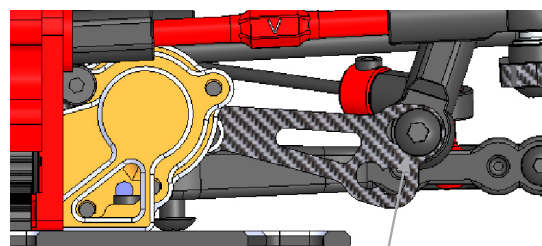
**x2**  
M3x6mm  
Button Head Screw

**x4**  
M3x6mm  
Countersunk Screw

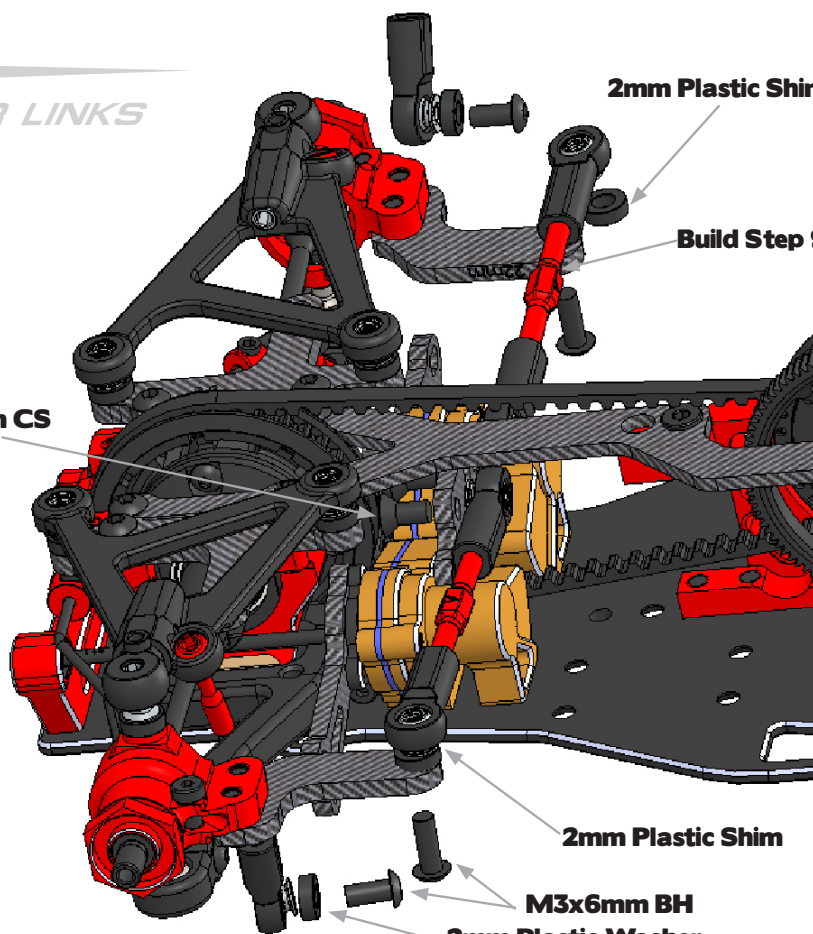
IRIS-40012

M3x6mm CS

M3x6mm CS



Note Rocker Position



2mm Plastic Shim

Build Step 9.2

2mm Plastic Shim

M3x6mm BH  
2mm Plastic Washer

## 10.1

### FRONT BUMPER

**x6**  
M3x8mm  
Countersunk Screw

M3x8mm CS

IRIS-70000

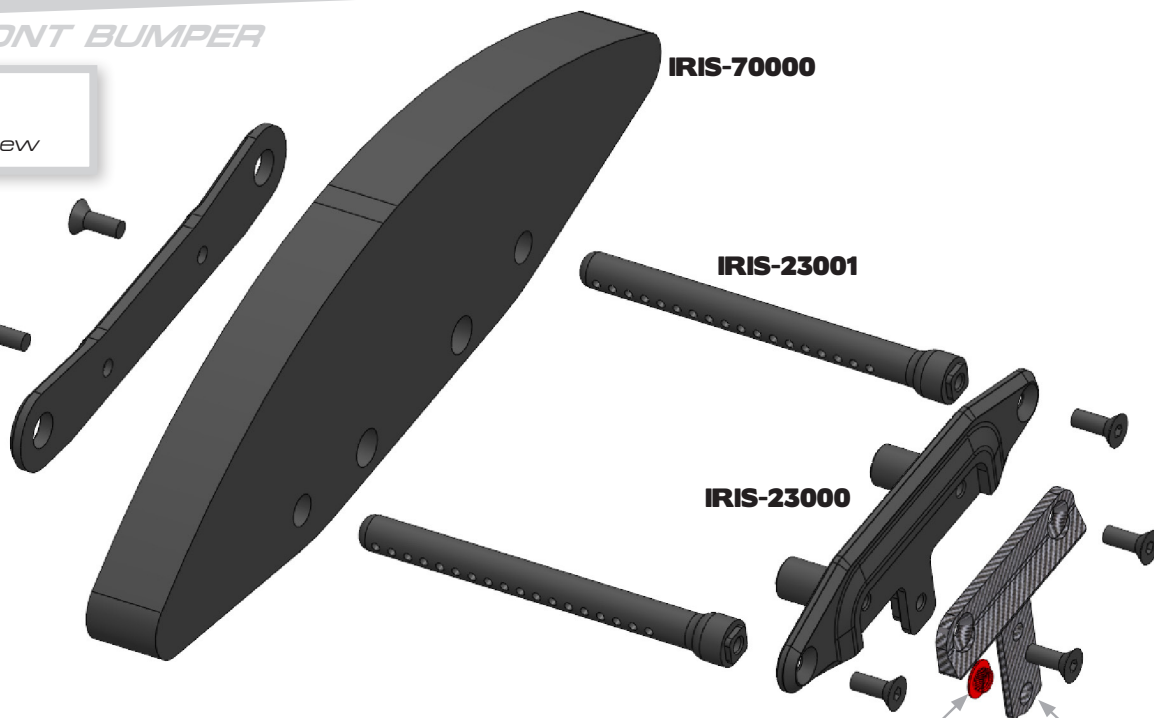
IRIS-23001

IRIS-23000

M3x8mm CS

IRIS-85013

IRIS-21021

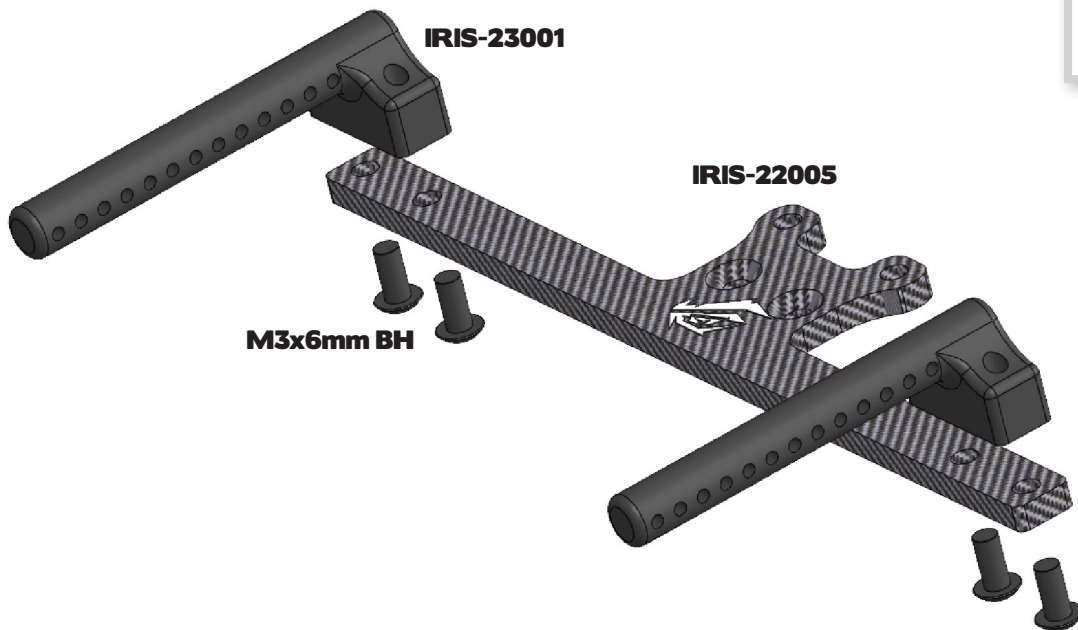




## 10.2

### REAR BODY MOUNT

**x4**  
M3x6mm  
Button Head Screw

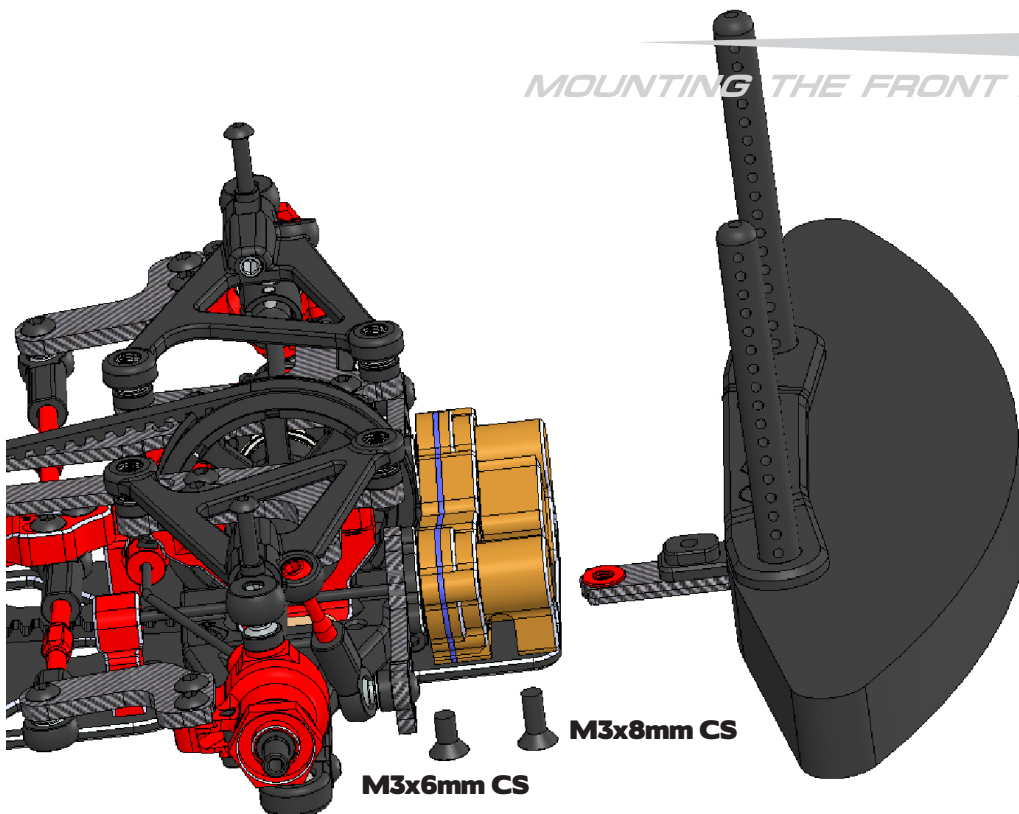


## 10.3

### MOUNTING THE FRONT BUMPER

**x1**  
M3x6mm  
Countersunk Screw

**x1**  
M3x8mm  
Countersunk Screw

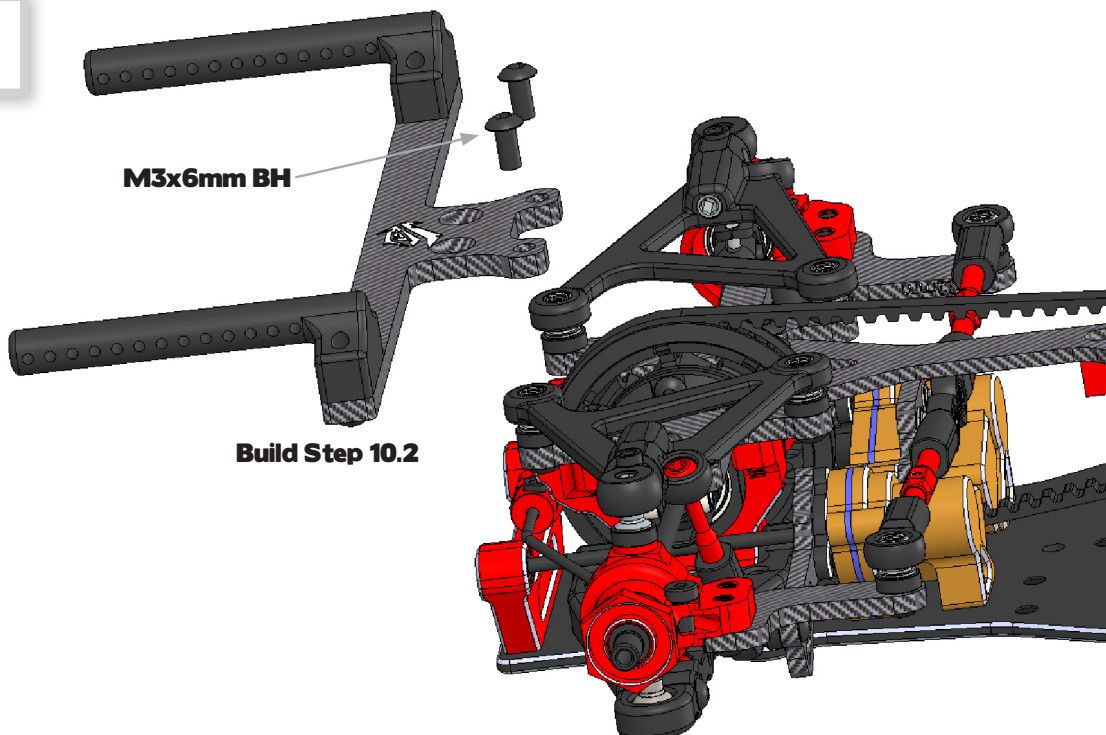


**Build Step 10.1**

## 10.3

### MOUNTING THE REAR BODY MOUNT

**x2**  
M3x6mm  
Button Head Screw



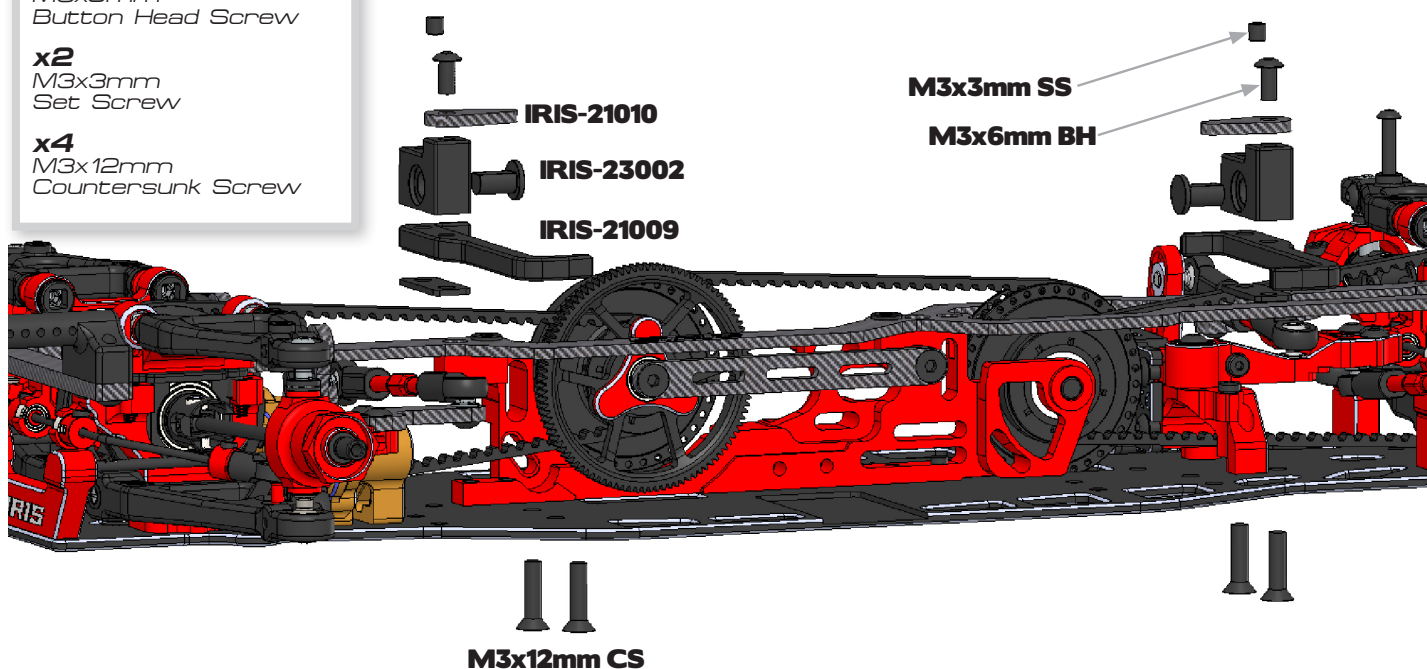
## 10.3

### INSTALL BATTERY MOUNT

**x2**  
M3x6mm  
Button Head Screw

**x2**  
M3x3mm  
Set Screw

**x4**  
M3x12mm  
Countersunk Screw



# GEAR UP, SPEED UP:

CHOOSE RUDDOG FOR YOUR IRIS ONE.2.



1/10 TOURING TIRE  
HEATING SYSTEM



RUDDOG HD LIPO  
CHARGING BAG



RSS65 SOLDERING  
STATION 65W



CAR BAG - 1/10  
TOURING CAR



ONROAD ALUMINIUM  
CAR STAND



SMALL  
RACING BAG



**RUDDOG.EU**

*[www.iris-racing.com](http://www.iris-racing.com)*



**RUDDOG**  
**Distribution GmbH**  
Sägewerkstr. 16  
83416 Saaldorf-Surheim  
GERMANY

**Email:** [support@ruddog.eu](mailto:support@ruddog.eu)  
**Tel:** +49 8654 5894818

