

RX-10SR

BODAR

DESTINY

RACING TEAM

1/10 SCALE COMPETITION TOURING CAR KIT

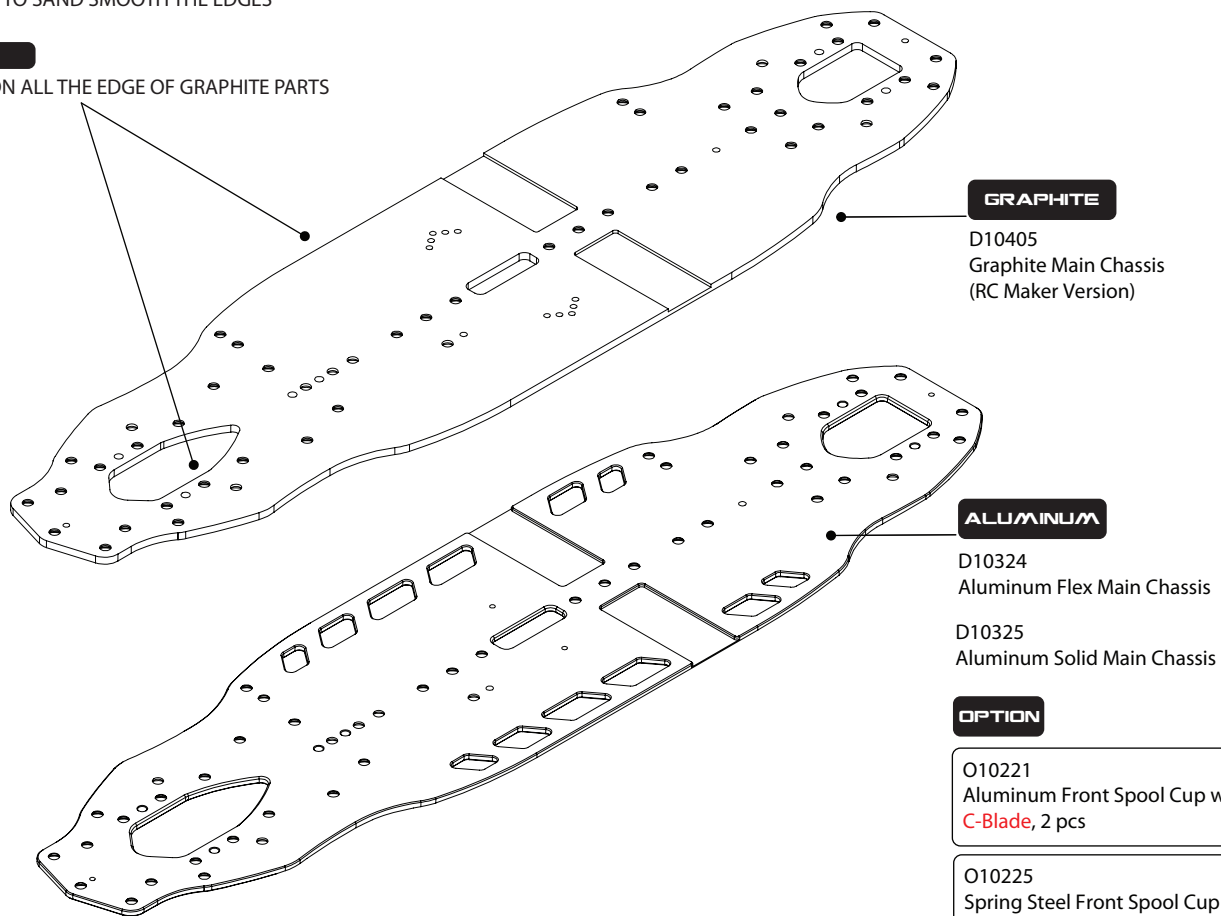
SEAL THE EDGES OF GRAPHITE PARTS FOR PROTECTION

SAND PAPER

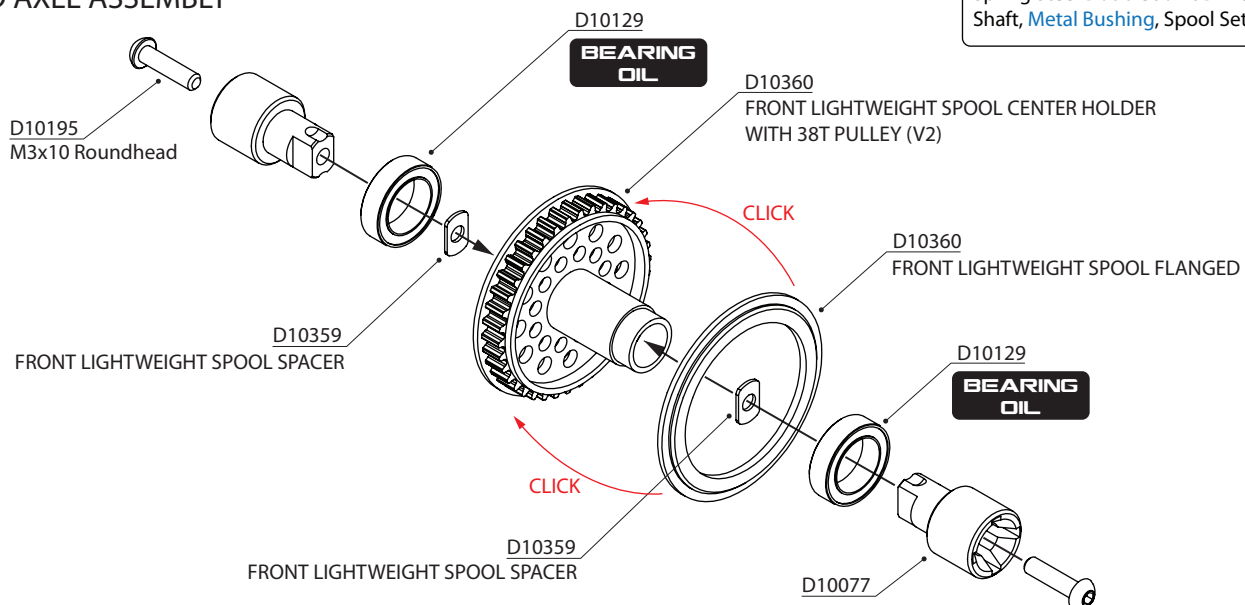
USE SAND PAPER TO SAND SMOOTH THE EDGES

CA GLUE

APPLY CA GLUE ON ALL THE EDGE OF GRAPHITE PARTS



SOLID AXLE ASSEMBLY

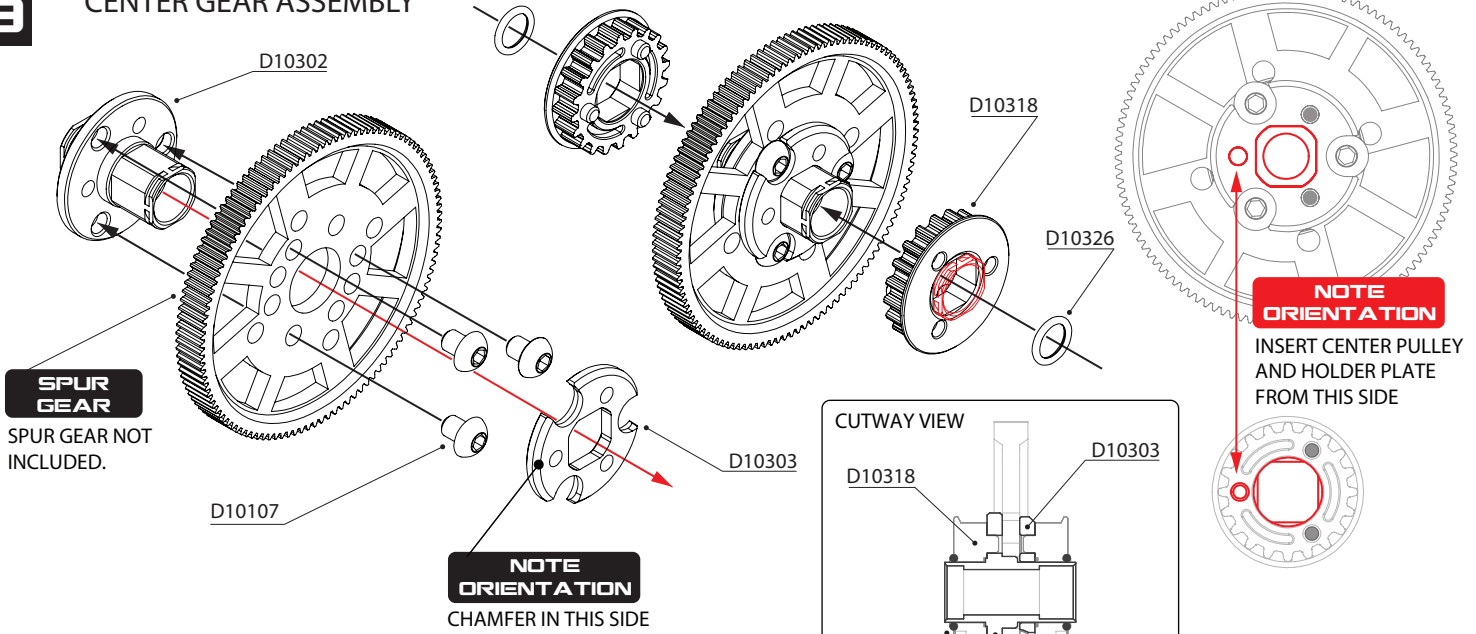


D10077 Front Spool Cup, Plastic, 2 pcs
D10102 M3x6 Flathead Screw, 10 pcs
D10129 10x15x4 Ball Bearing (Rubber Seal)
D10358 Front Lightweight Spool Center Holder
D10359 Front Lightweight Spool Spacer

D10195 M3x10 Roundhead Screw, 10 pcs
D10405 RX-10SR 3.0R Graphite Main Chassis
D10324 RX-10SR 3.0 Aluminum Flex Main Chassis
D10325 RX-10SR 3.0 Aluminum Solid Main Chassis

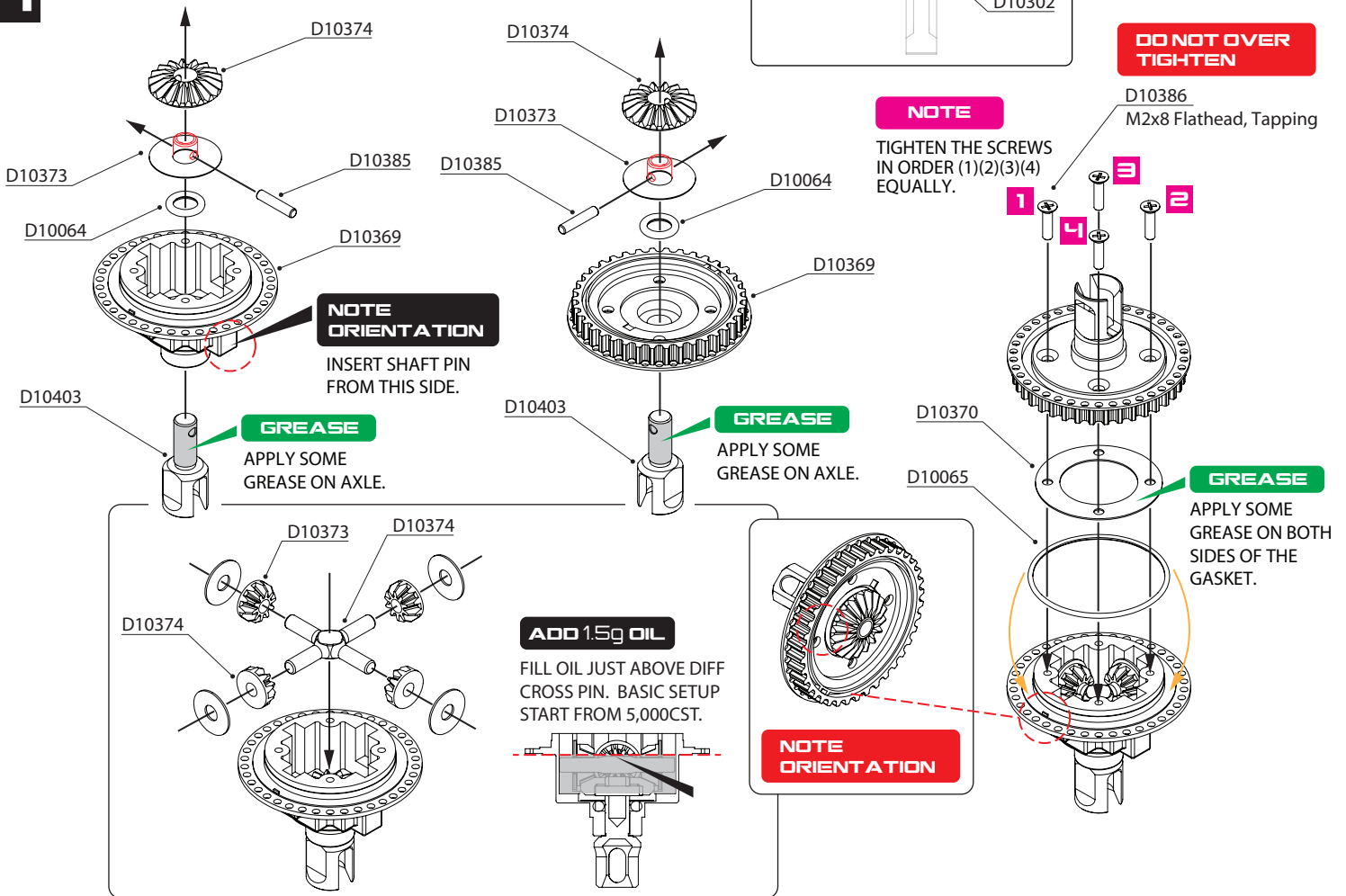
3

CENTER GEAR ASSEMBLY



4

GEAR DIFFERENTIAL ASSEMBLY



- D10107 M3x4 Roundhead Screw, 10 pcs
- D10064 Diff Shaft Sealer O-Ring
- D10065 Diff Housing Sealer O-Ring
- D10302 Aluminum Solid Layshaft
- D10303 Center Pulley Holder Plate
- D10318 Plastic Center Pulley 20T, 2 pcs
- D10326 O-Ring for Solid LayShaft, 10 pcs
- D10368 Gear Differential Set (38T) V2

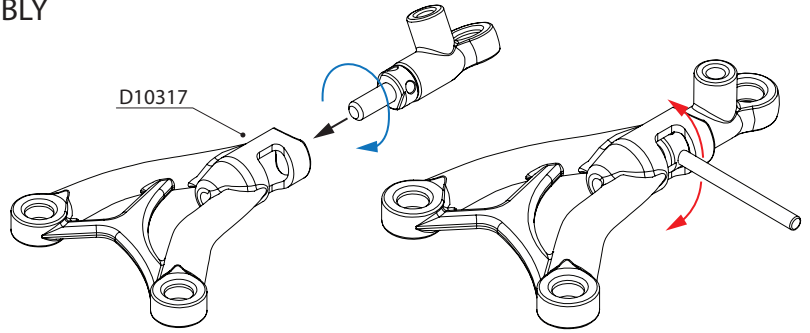
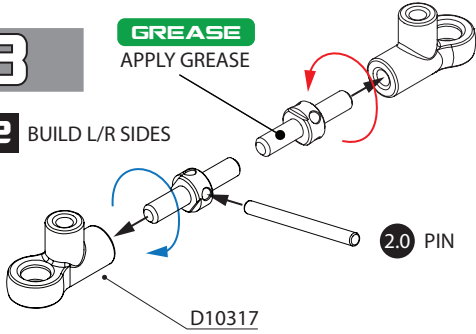
- D10369 Gear Differential Case Set (V2)
- D10370 Differential Seal Gasket (V2)
- D10373 Differential Washer Set (V2)
- D10374 Internal Differential Gear Set (V2)
- D10385 Shaft Pin 2x10mm
- D10386 M2x8 Flathead Tapping Screw
- D10401 RX-10SR 3.0 Gear Differential Set (V2), REAR, (38T)
- D10403 Aluminum Differential Cup

5 FRONT & REAR UPPER ARM ASSEMBLY

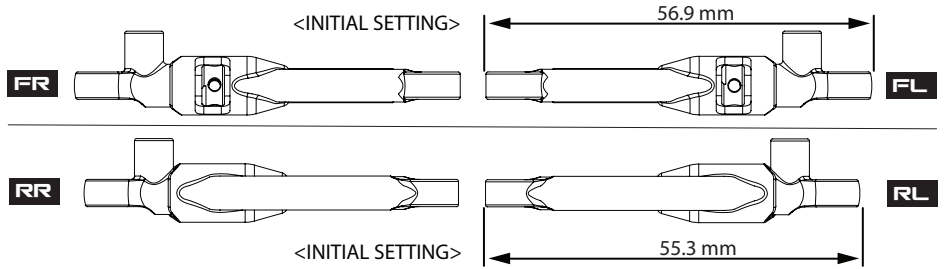
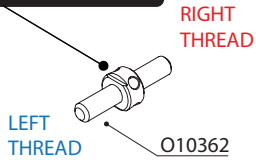
BAG **B**

GREASE
APPLY GREASE

X2 BUILD L/R SIDES



NOTE
ORIENTATION

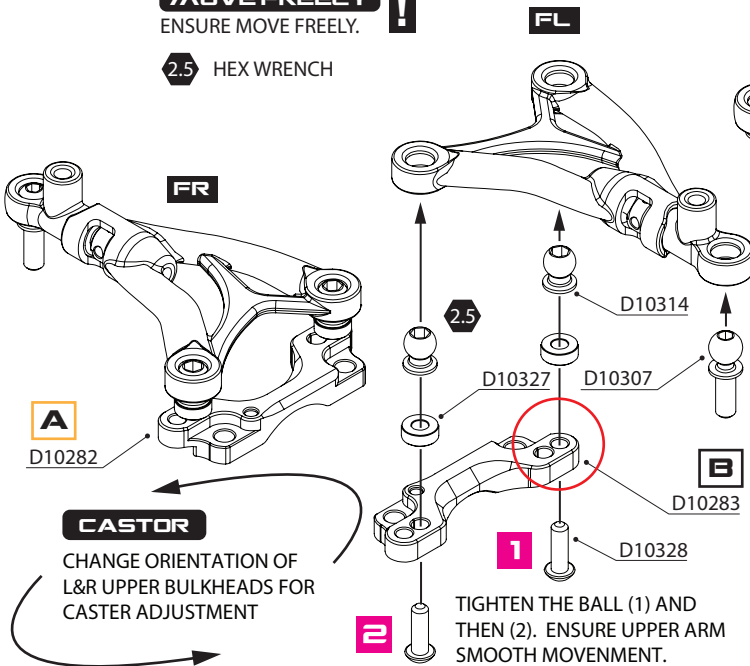


6 FRONT & REAR UPPER BULKHEAD ASSEMBLY

X2 BUILD L/R SIDES

MOVE FREELY !
ENSURE MOVE FREELY.

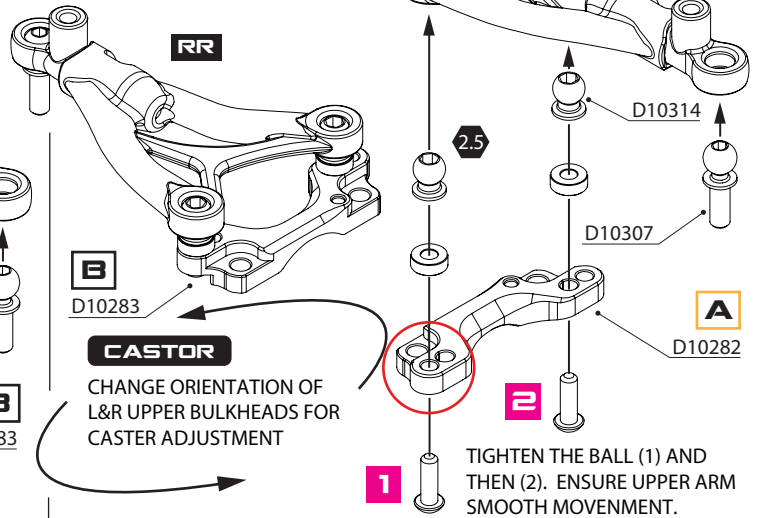
2.5 HEX WRENCH



X2 BUILD L/R SIDES

MOVE FREELY !
ENSURE MOVE FREELY.

2.5 HEX WRENCH

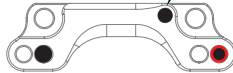
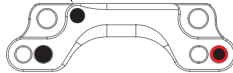


FRONT CASTER ADJUSTMENT

MARKING FORWARD **4°**

MARKING BACKWARD **5**

FRONT



<INITIAL SETTING>

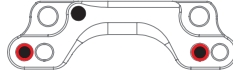
LEFT ● MORE ON POWER STEERING

REAR CASTER ADJUSTMENT

1° MARKING FORWARD

0° MARKING BACKWARD

FRONT



● LESS REAR TRACTION

LEFT

<INITIAL SETTING>

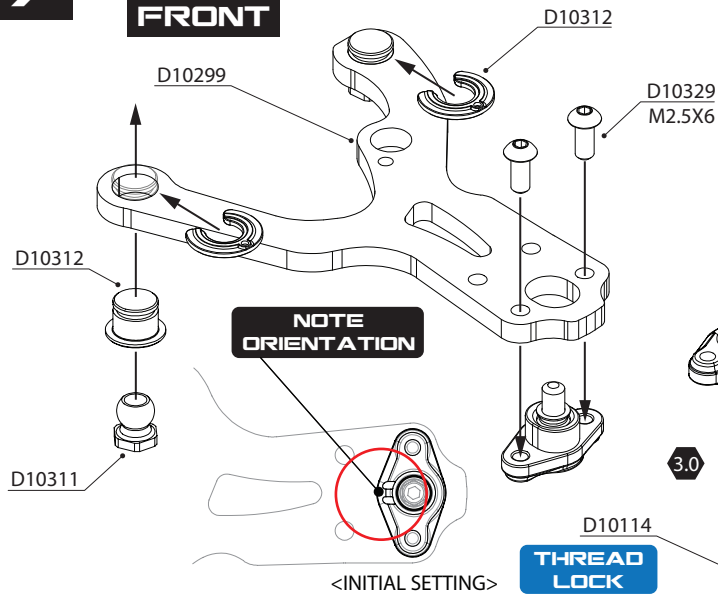
- D10282 RX-10SR 3.0 Aluminum Upper Bulkhead (A), F/R
- D10283 RX-10SR 3.0 Aluminum Upper Bulkhead (B), F/R
- D10307 5.0x14mm Kingpin Ball
- D10314 4.8mm Upper Arm Ball
- D10317 F/R Upper Arm Set, 2 pcs
- D10327 2.5x5.5x2mm Aluminum Spacer (Black), 10 pcs

OPTION

- D10198 2.5x5.5x0.5mm Aluminum Spacer (Black), 10 pcs
- O10331 2.5x5.5x1mm Aluminum Spacer (Black), 10 pcs

7 LOWER ARM ASSEMBLY

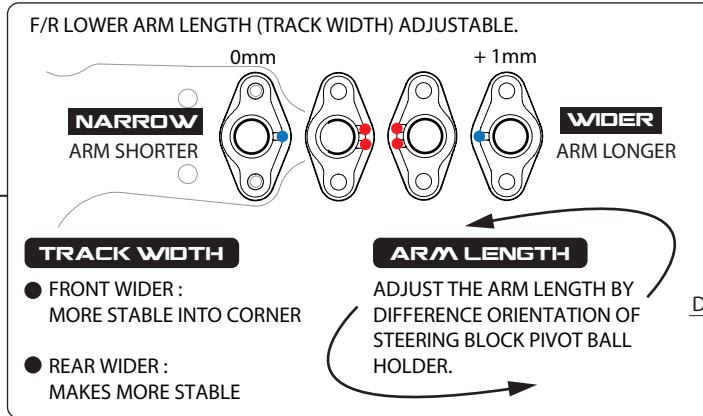
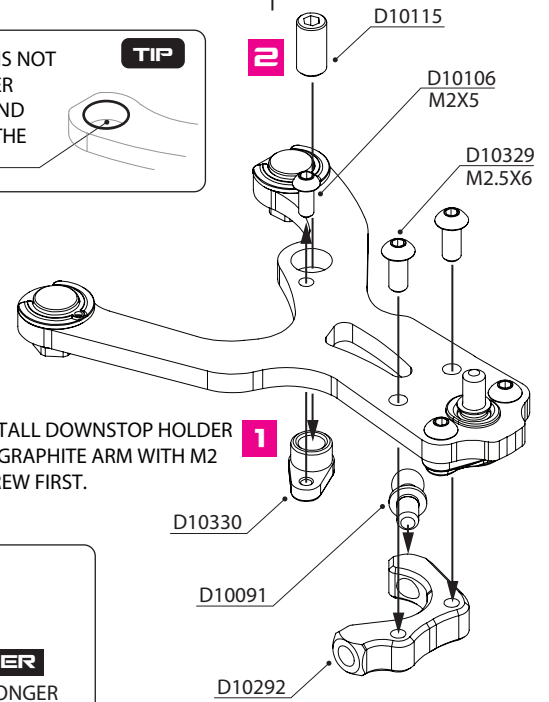
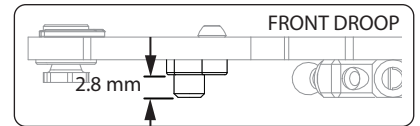
FRONT



X2 BUILD L/R SIDES

MOVE FREELY !
ENSURE SUSPENSION MOVE FREELY.

TIP
IF THE PIVOT BALL IS NOT MOVE FREELY AFTER ASSEMBLY, USE SAND PAPER TO POLISH THE INNER SURFACE.

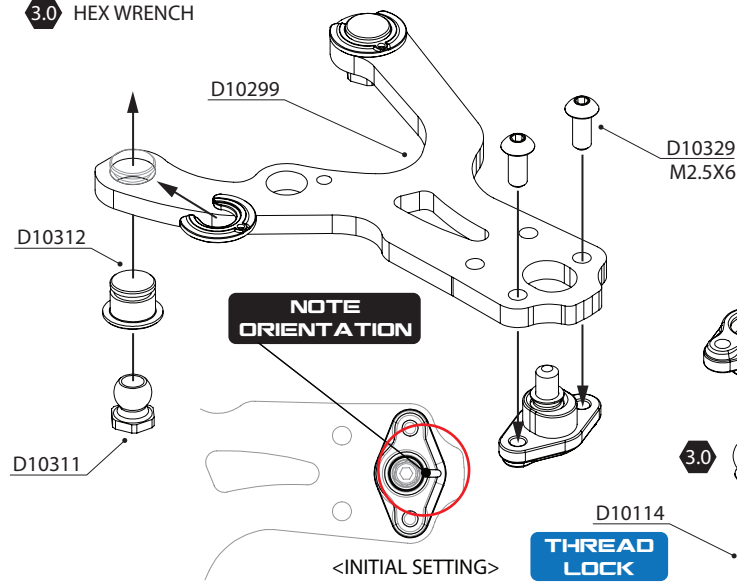


8 REAR

X2 BUILD L/R SIDES

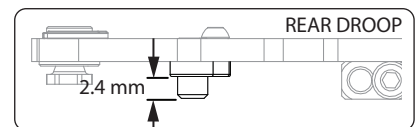
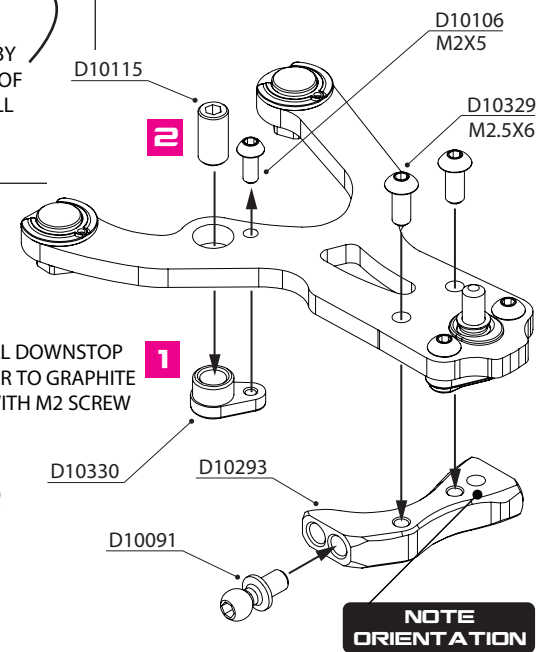
MOVE FREELY !
ENSURE SUSPENSION MOVE FREELY.

3.0 HEX WRENCH



1

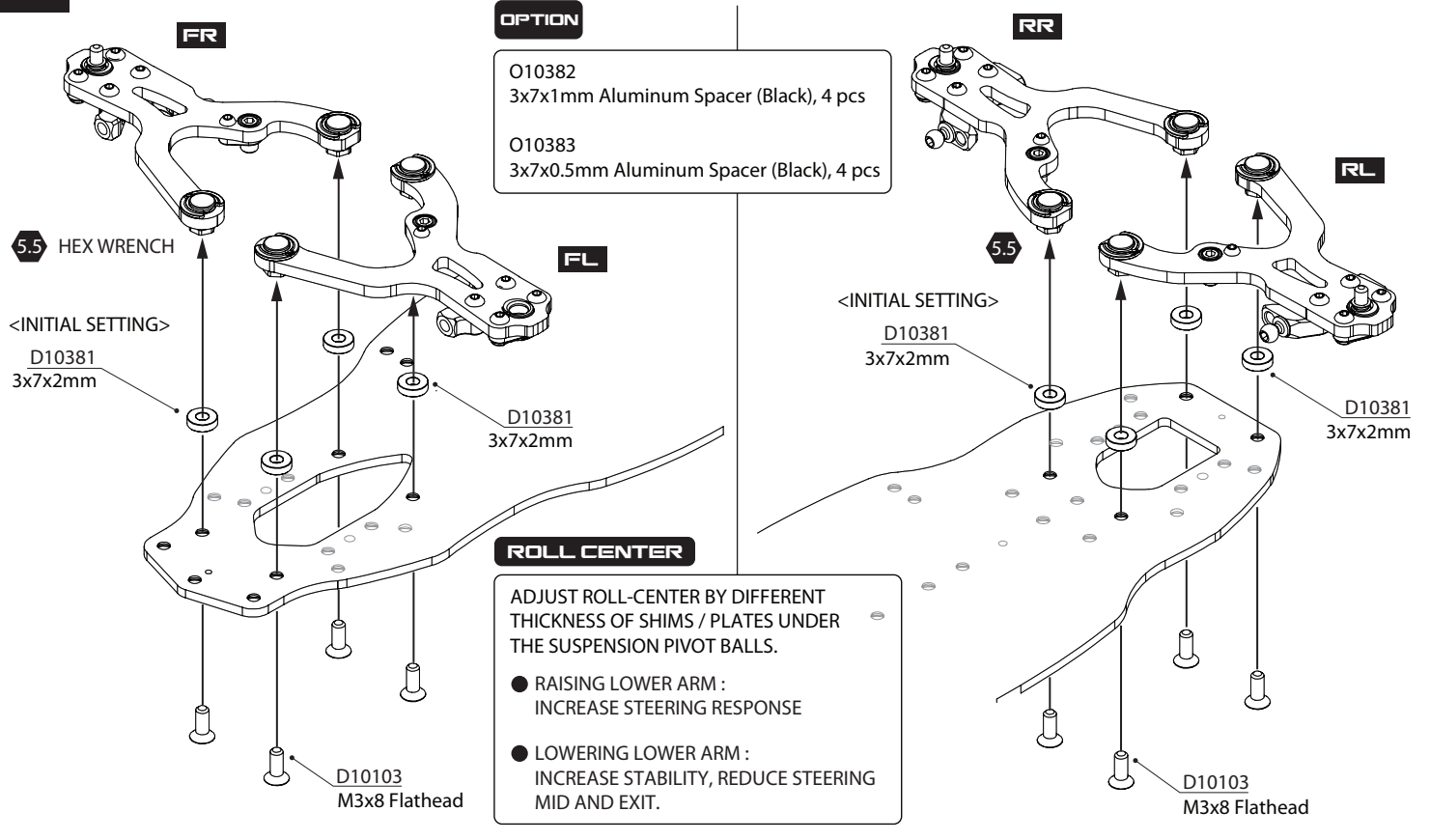
INSTALL DOWNSTOP HOLDER TO GRAPHITE ARM WITH M2 SCREW FIRST.



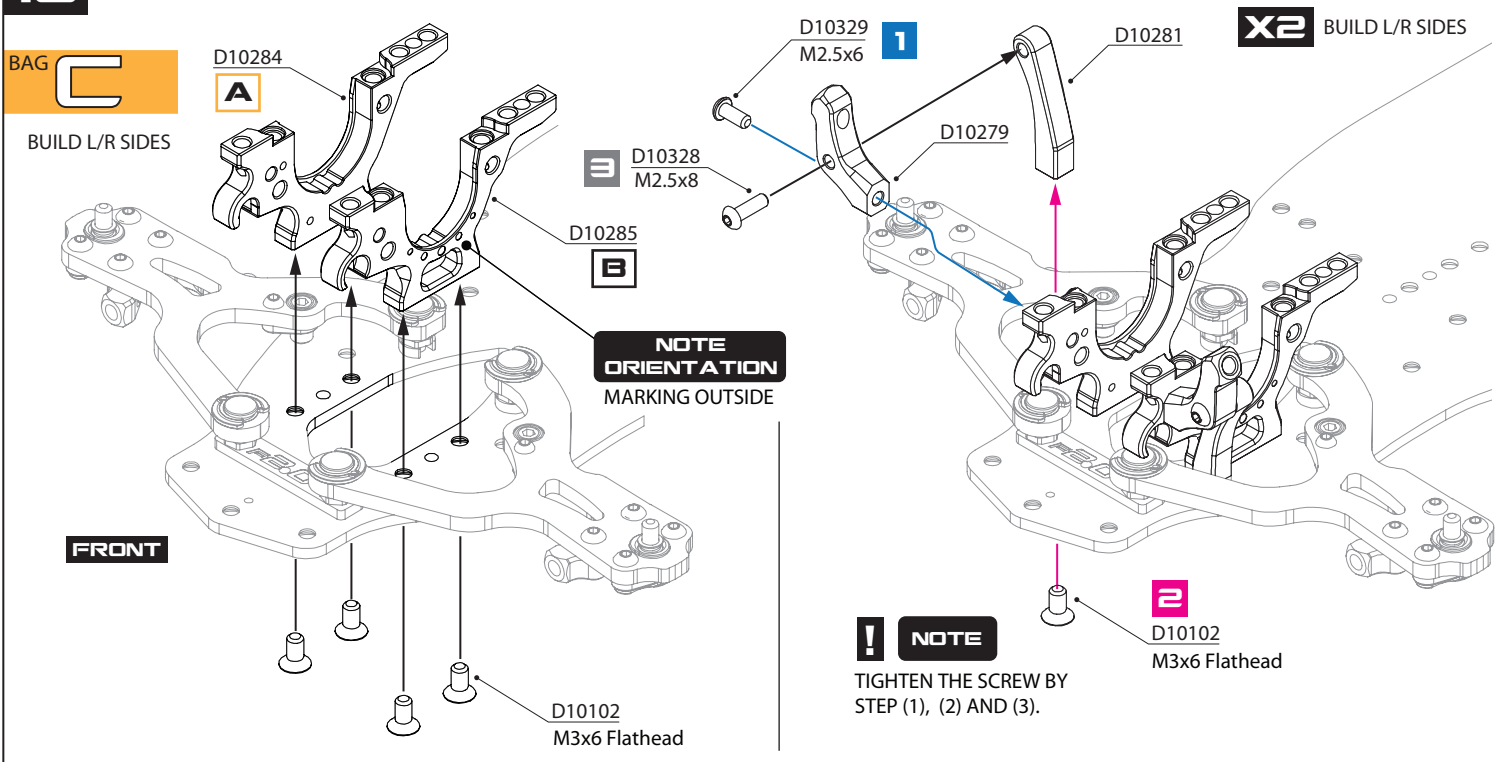
- D10091 Aluminum 4.3x10.8 Ballstud
- D10106 M2x5 Roundhead Screw, 10 pcs
- D10114 M3x8 Set Screw, 10 pcs
- D10115 M4x8 Set Screw, 10 pcs
- D10292 Aluminum Lower Shock Mount, Front
- D10293 Aluminum Lower Shock Mount, Rear
- D10299 Graphite Lower Arm

- D10311 Aluminum Suspension Pivot Ball, 4 pcs
- D10312 Suspension Pivot Ball Bushing, 2 pcs
- D10319 Steering Block Pivot Ball Holder (1&2)
- D10320 5mm Pivot Ball, 4 pcs
- D10329 M2.5x6 Roundhead Screw, 10 pcs
- D10330 Downstop Screw Holder, 4 pcs

9 FRONT & REAR LOWER SUSPENSION ARM



10 FRONT LOWER BULKHEAD & SHOCK TOWER ASSEMBLY



- D10102 M3x6 Flathead Screw, 10 pcs
- D10103 M3x8 Flathead Screw, 10 pcs
- D10279 Aluminum Shock Tower, Front
- D10281 Aluminum Shock Tower Holder (F/R)
- D10284 Aluminum Lower Bulkhead (A), F/R
- D10285 Aluminum Lower Bulkhead (B), F/R

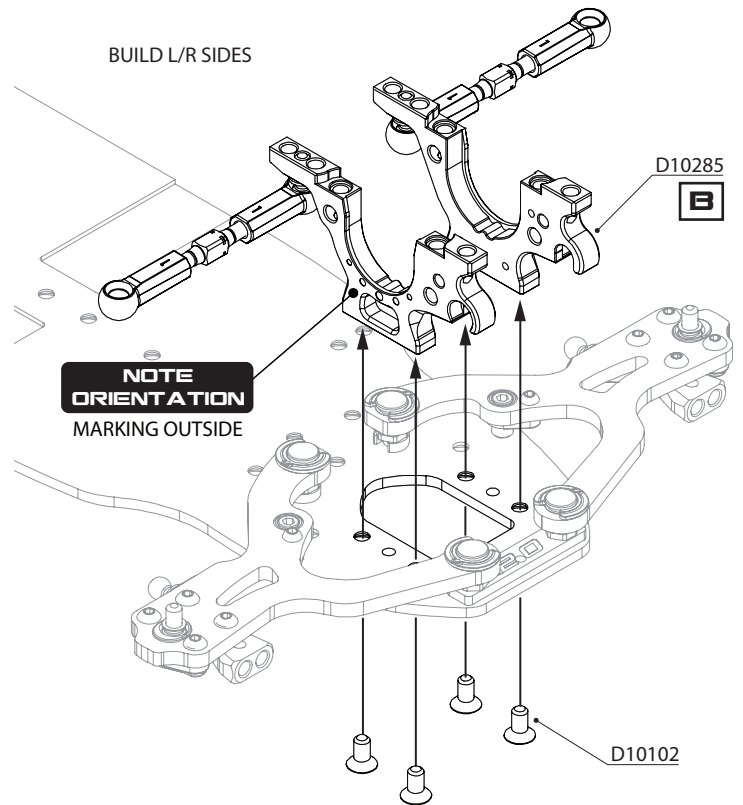
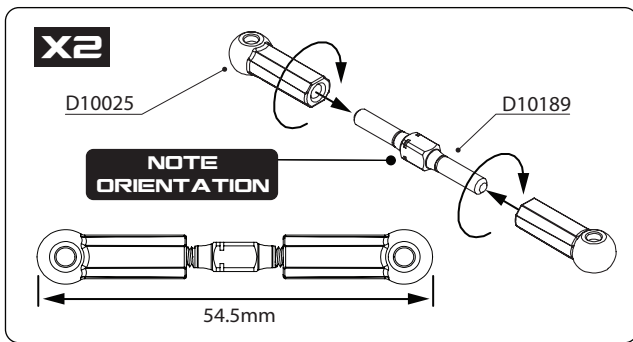
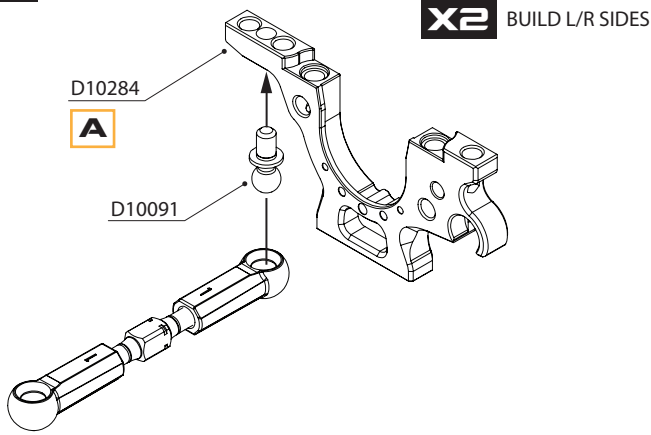
- D10328 M2.5x8 Roundhead Screw, 10 pcs
- D10329 M2.5x6 Roundhead Screw, 10 pcs
- D10381 3x7x2mm Aluminum Spacer (Black), 4 pcs

OPTION

- D10380 Graphite Lower Arm(B), REAR, Caster 4/5 Deg

11

REAR LOWER BULKHEAD ASSEMBLY



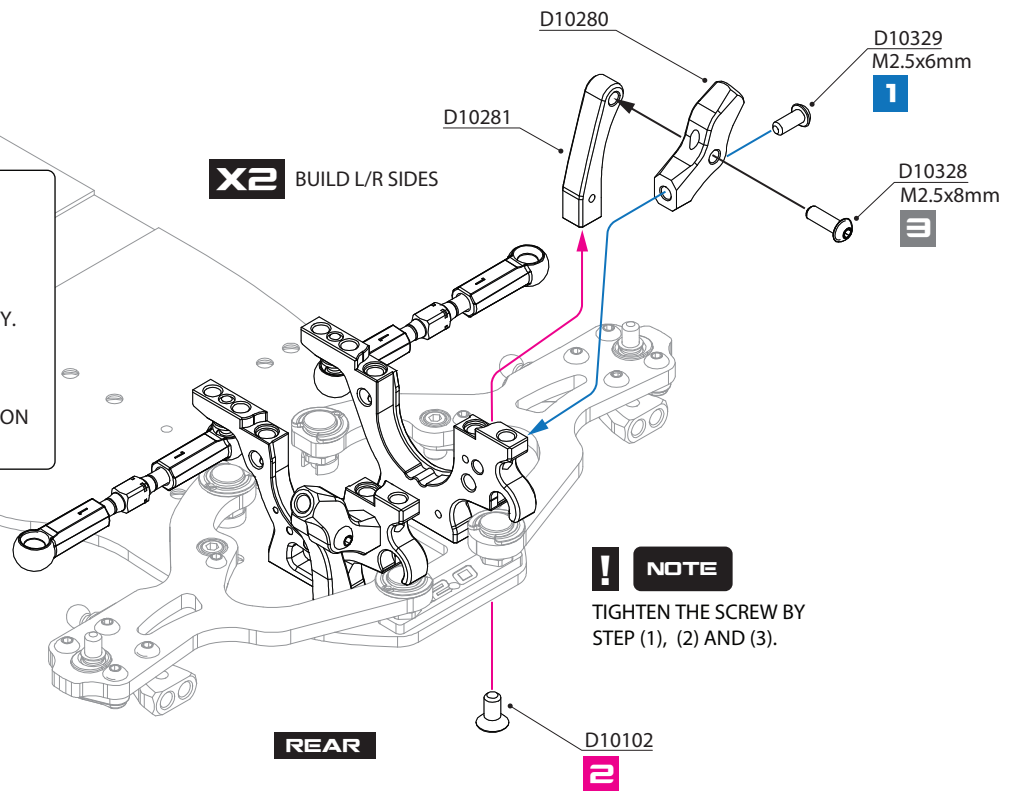
12

REAR SHOCK TOWER ASSEMBLY

REAR TOE - GAIN

TOE ANGLE ADJUST BY DIFFERENT LENGTH OF REAR TURNBUCKLES.

- MORE REAR TOE : TURNBUCKLES SHORTER. MORE REAR GRIP, MORE STABILITY.
- LESS REAR TOE : TURNBUCKLES LONGER. MORE CORNERING SPEED, MORE ON POWER STEERING.

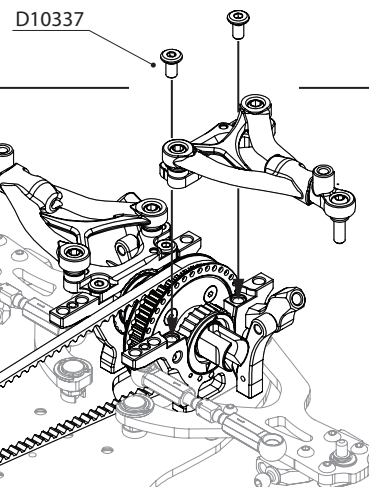
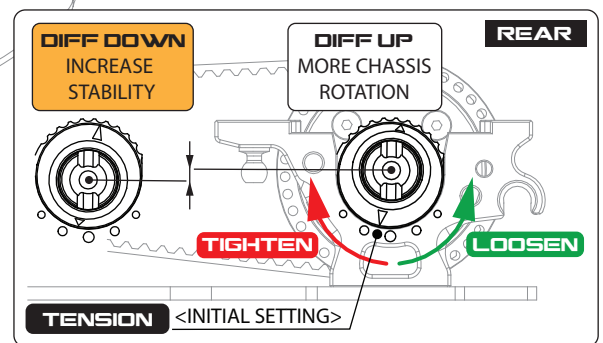
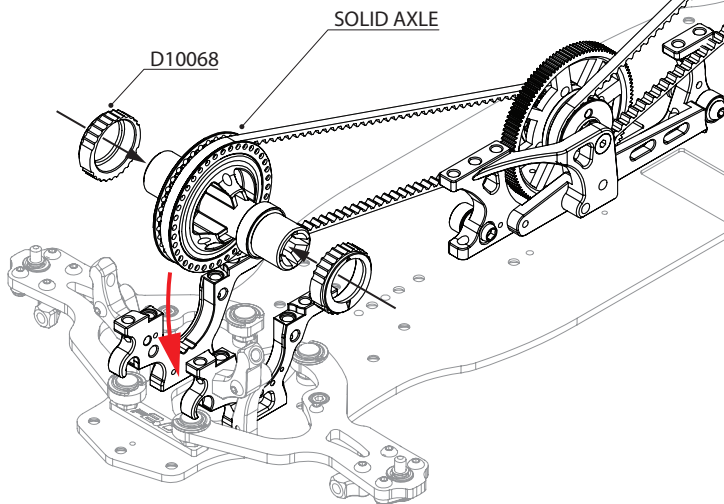
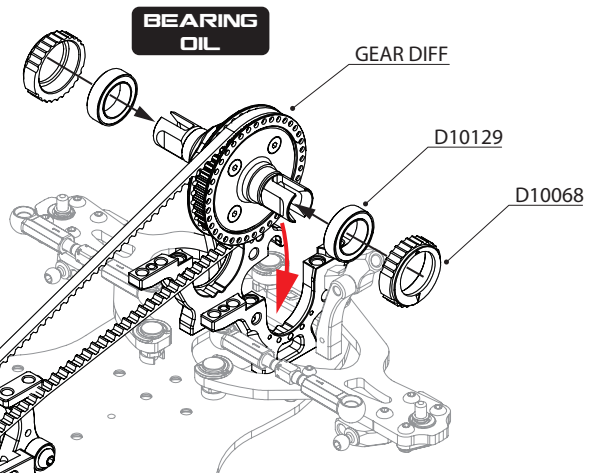
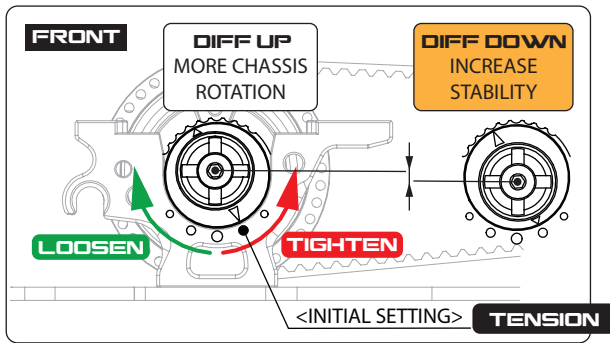


D10025 Plastic Ball Cups (4.3x16mm)
 D10091 Aluminum 4.3x10.8 Ballstud
 D10102 M3x6 Flathead Screw, 10 pcs
 D10189 M3x30mm Turnbuckle, Aluminum, Black
 D10280 Aluminum Shock Tower, Rear

D10281 Aluminum Shock Tower Holder (F/R)
 D10284 Aluminum Lower Bulkhead (A), F/R
 D10285 Aluminum Lower Bulkhead (B), F/R
 D10328 M2.5x8 Roundhead Screw, 10 pcs
 D10329 M2.5x6 Roundhead Screw, 10 pcs

15

FRONT & REAR DIFFERENTIAL ASSEMBLY

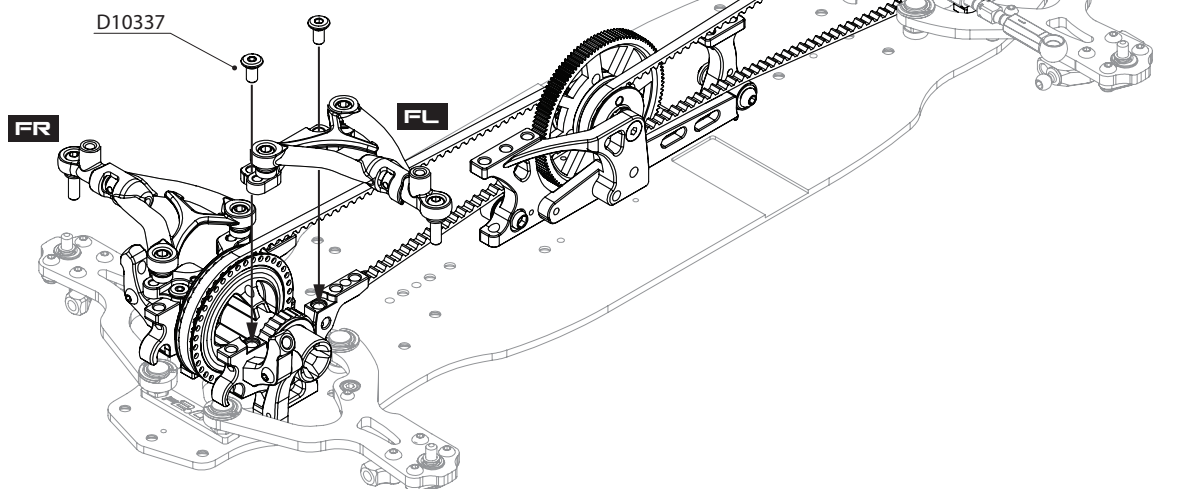


16

FRONT & REAR UPPER BULKHEAD ASSEMBLY

X2 BUILD L/R SIDES

ROTATE FREELY !
ENSURE TRANSMISSION
ROTATE FREELY.



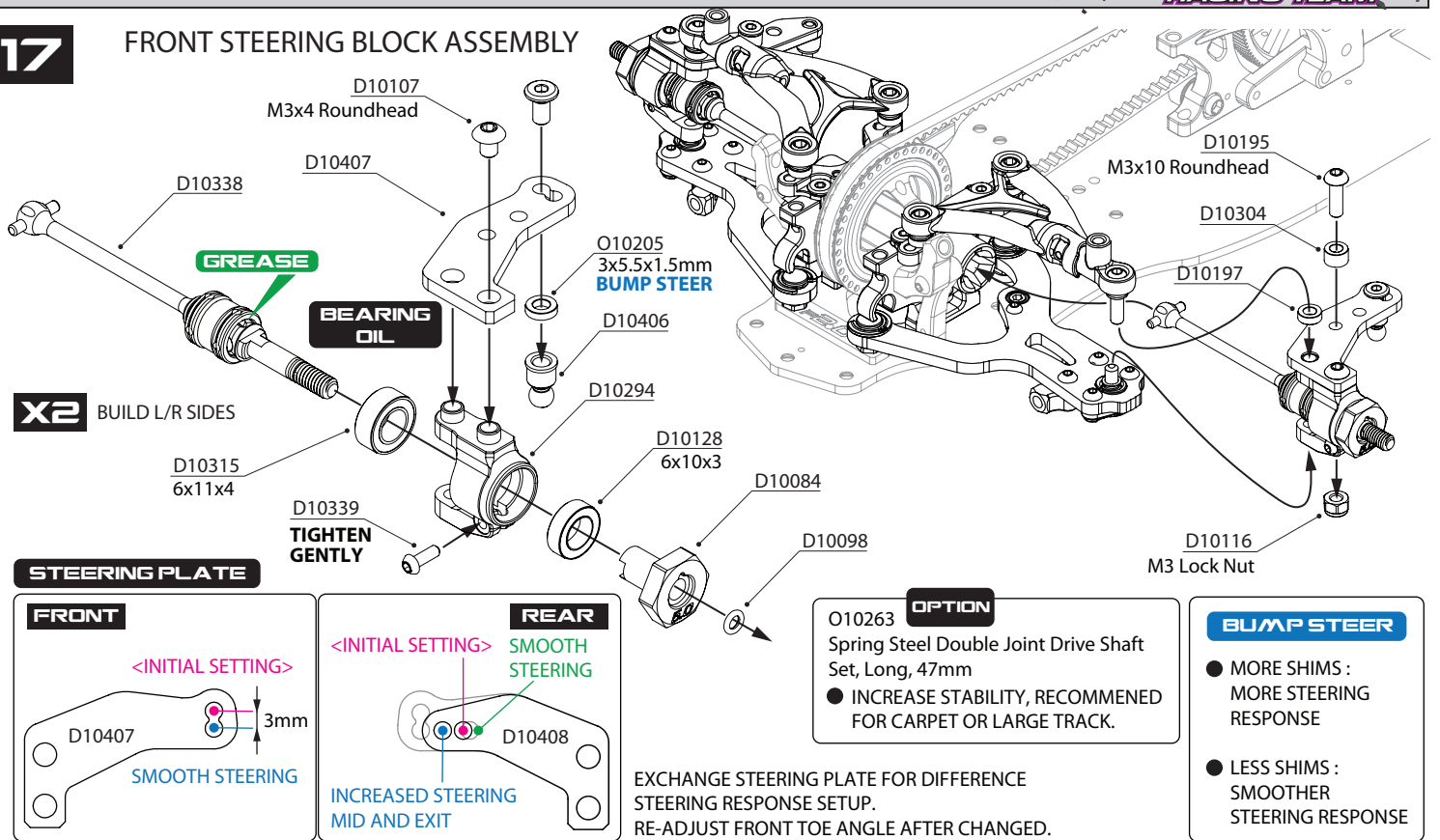
D10068 Plastic Adjustment Ball Bearing Hub
D10129 10x15x4 Ball Bearing (Rubber Seal)
D10337 M3x6 ULP head Screw, 10 pcs

OPTION

O10124K Alum Adjustment Ball Bearing Hub, 2 pcs, Black

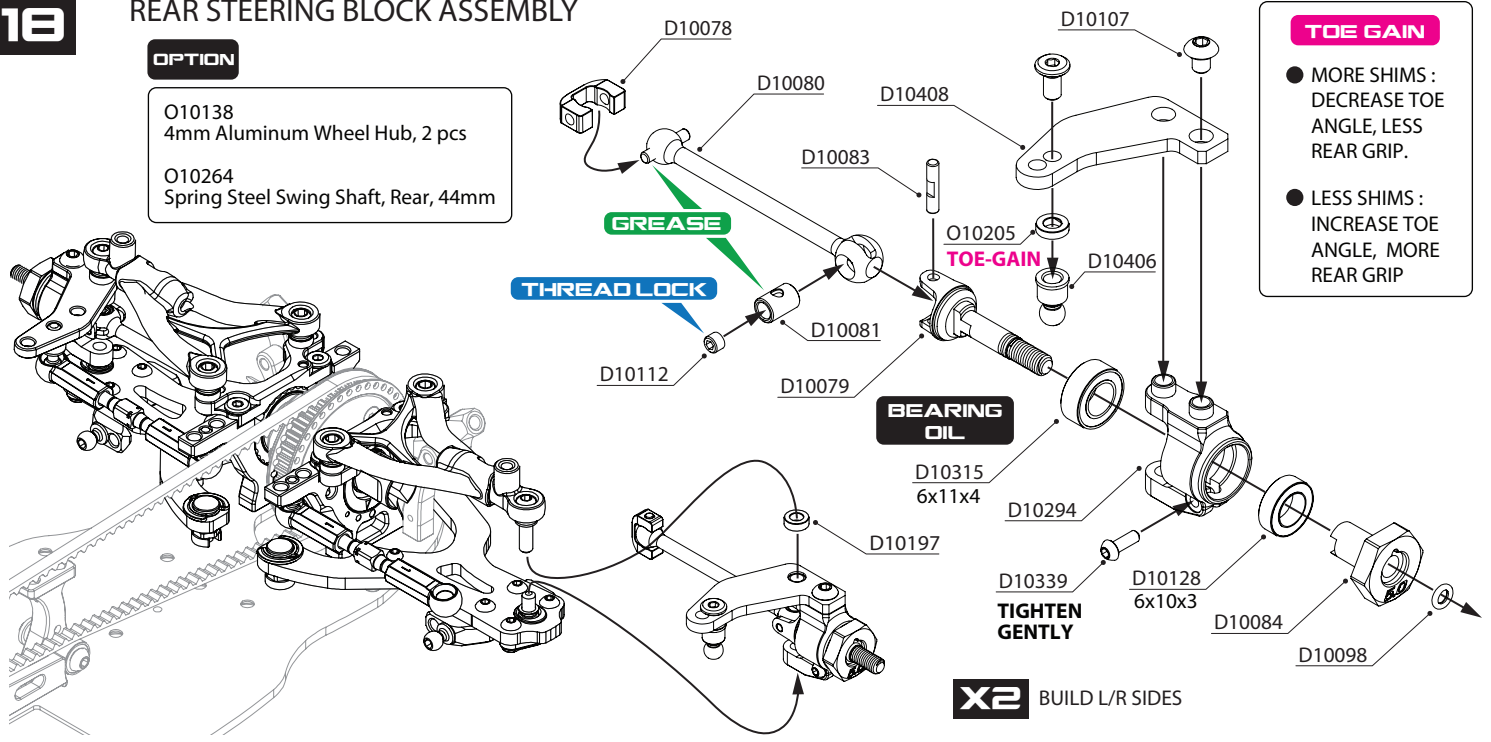
17

FRONT STEERING BLOCK ASSEMBLY



18

REAR STEERING BLOCK ASSEMBLY

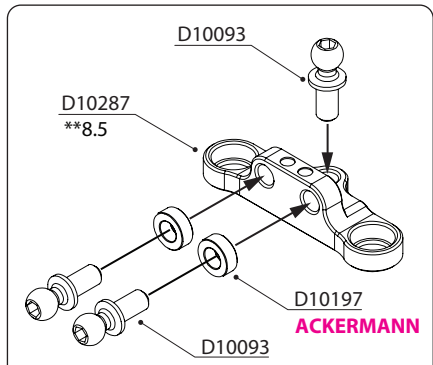


D10078 Drive Shaft Cap 3.5mm (Derlin), 4 pcs
 D10079 Lightweight Steel Joint Axle
 D10080 Aluminum Swing Shaft, Rear, 44mm
 D10081 Cross Joint, 4 pcs
 D10083 2x10mm Shaft Pin with Lock Slot
 D10084 5mm Aluminum Wheel Hub, 2 pcs
 D10092 Aluminum 4.3x12.7 Ballstud
 D10098 O-Ring for Drive Shaft, 10 pcs
 D10107 M3x4 Roundhead Screw, 10 pcs
 D10112 M3x2.5 Set Screw, 10 pcs
 D10128 6x10x3 Ball Bearing (Rubber Seal)

D10197 3x5.5x2.0mm Aluminum Spacer (Black), 10 pcs
 O10205 3x5.5x1.5mm Aluminum Spacer (Black), 10 pcs
 D10294 Aluminum Steering Block
 D10304 3x5.5x3.5mm Aluminum Spacer (Black), 10 pcs
 D10315 6x11x4 Ball Bearing (Rubber Seal)
 D10337 M3x6 ULP head Screw, 10 pcs
 D10338 Spring Steel Double Joint Drive Shaft Set, Front
 D10339 M2x6 Roundhead Screw, 10 pcs
 D10406 4.3x7mm Steering Ballstud, 4 pcs
 D10407 Graphite Steering Plate (0/+3)
 D10408 Graphite Steering Plate, REAR

19 STEERING ASSEMBLY

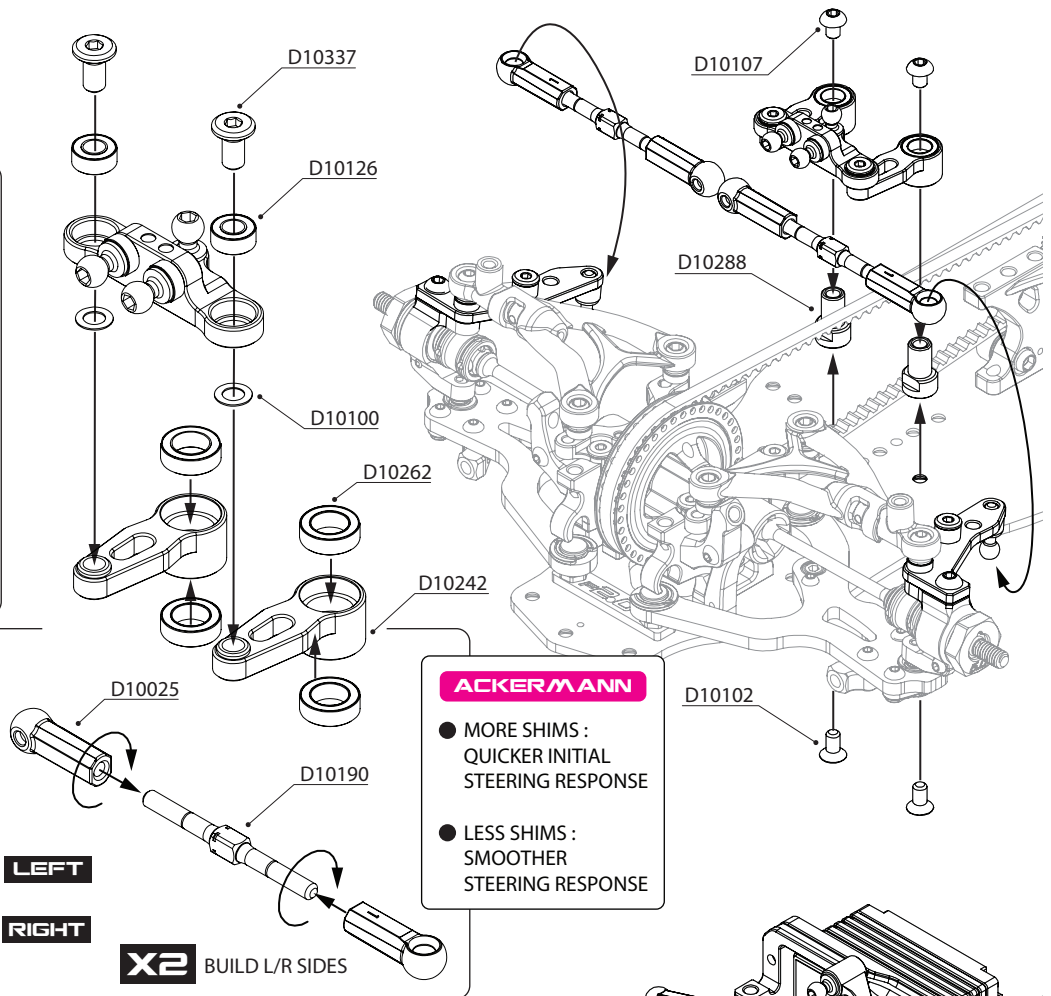
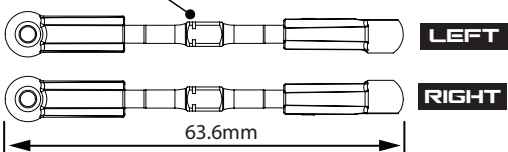
BAG 



OPTION

O10340 Aluminum Steering Center Plate with Bearings (*8)
 ● SMOOTH STEERING RESPONSE

NOTE ORIENTATION

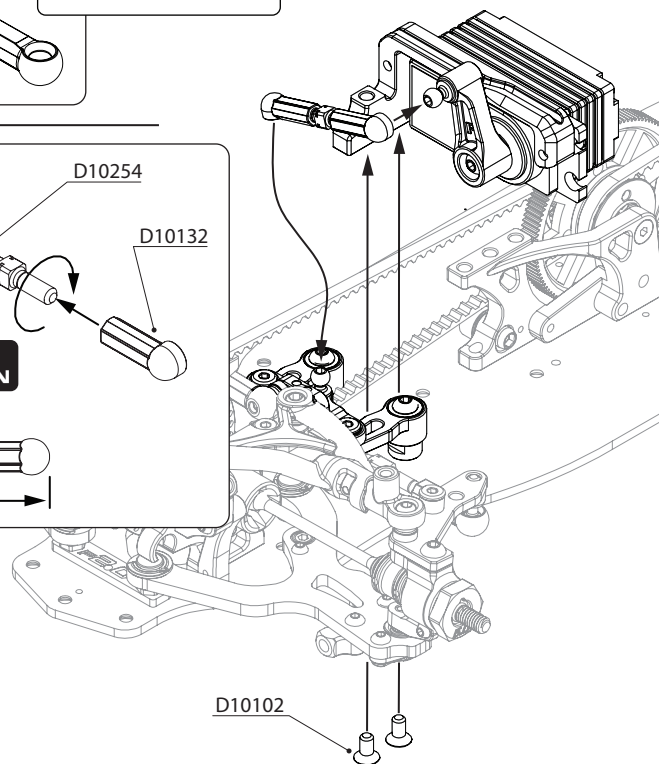
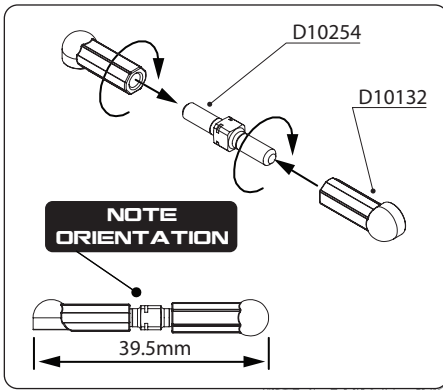
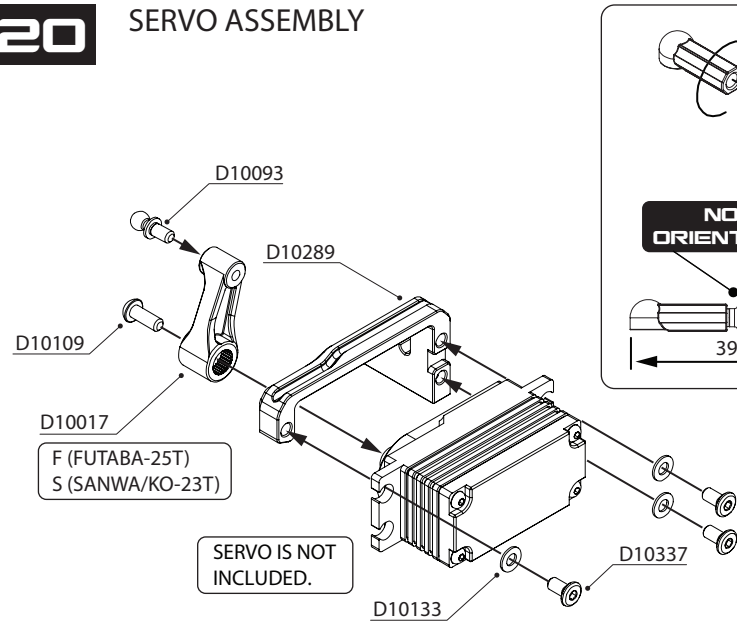


ACKERMANN

- MORE SHIMS : QUICKER INITIAL STEERING RESPONSE
- LESS SHIMS : SMOOTHER STEERING RESPONSE

X2 BUILD L/R SIDES

20 SERVO ASSEMBLY



- | | |
|---|---|
| D10017 Plastic Servo Horn Set | D10190 M3x39mm Turnbuckle, Aluminum, Black, 2 pcs |
| D10025 Plastic Ball Cups (4.3x16mm), 10 pcs | D10197 3x5.5x2.0mm Aluminum Spacer (Black), 10 pcs |
| D10093 Aluminum 4.3x11.8 Ballstud | D10242 Aluminum Bellcrank, 2 pcs |
| D10100 M3 Shim Set (0.1/0.2/0.3mm) | D10254 M3x20mm Turnbuckle, Aluminum, Black |
| D10102 M3x6 Flathead Screw | D10262 5x8x2.5 Ball Bearing, 2 pcs |
| D10107 M3x4 Roundhead Screw, 10 pcs | D10287 Aluminum Steering Center Plate with Bearings (**8.5) |
| D10109 M3x8 Roundhead Screw, 10 pcs | D10288 Aluminum Bellcrank Post, 2 pcs |
| D10132 Plastic Ball Cups (4.3x13mm), 4 pcs | D10289 Aluminum Floating Servo Mount |
| D10133 3mm Spacer (Steel), 10 pcs | D10337 M3x6 ULP head Screw, 10 pcs |

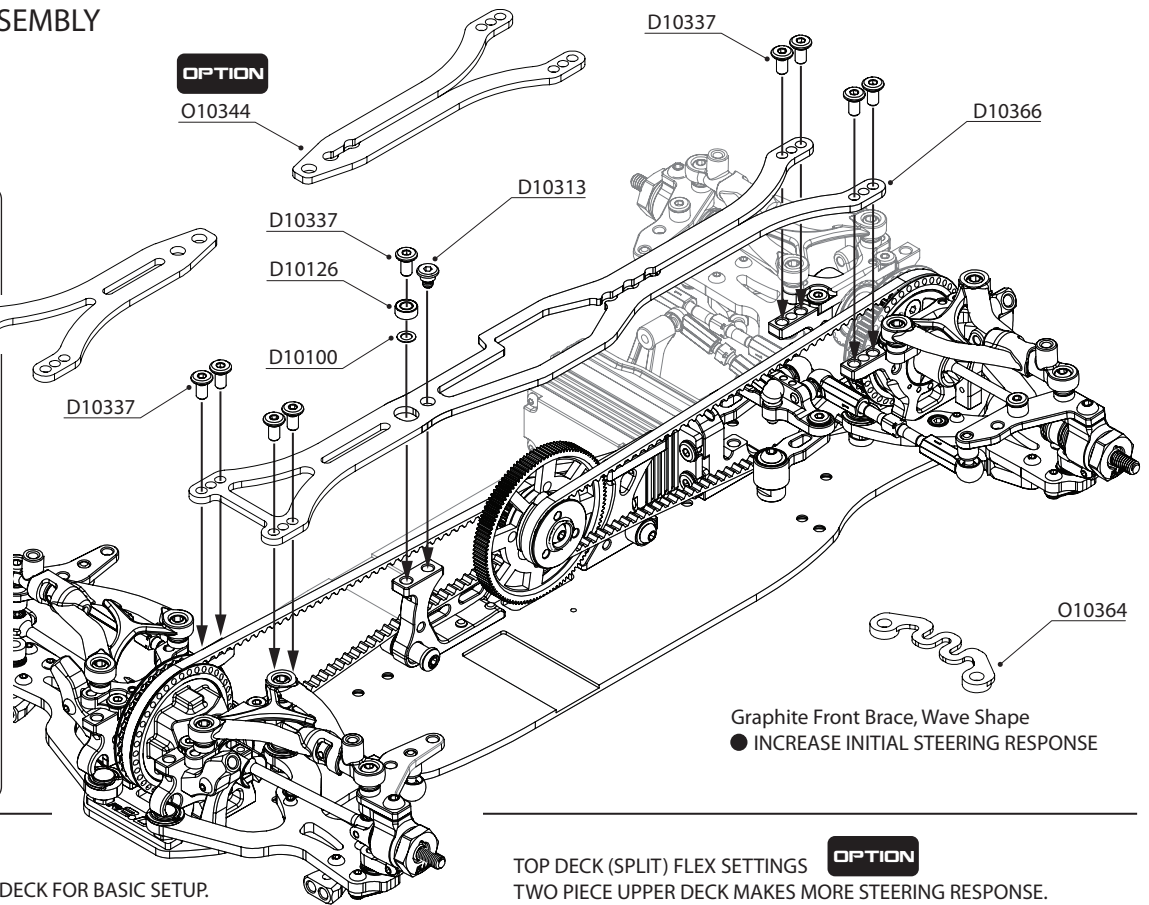
21

UPPER DECK ASSEMBLY

OPTION

O10286
Graphite Front Brace
● INCREASE STEERING RESPONSE

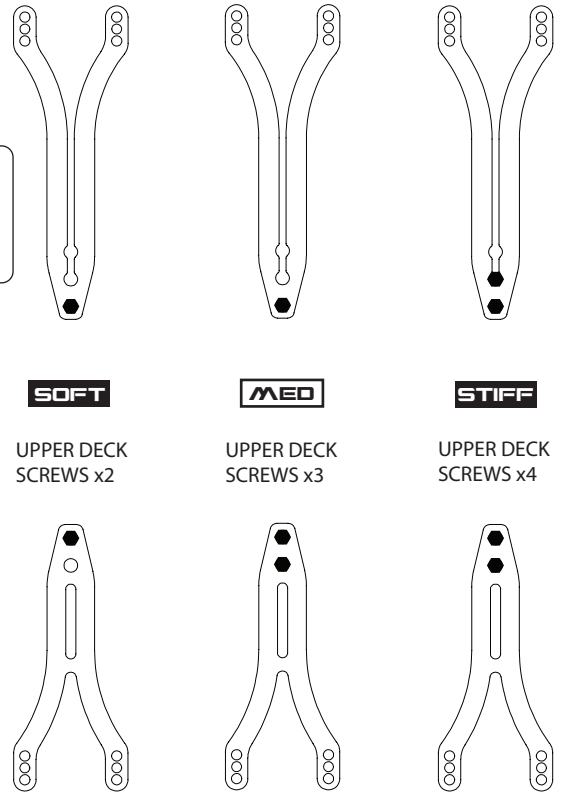
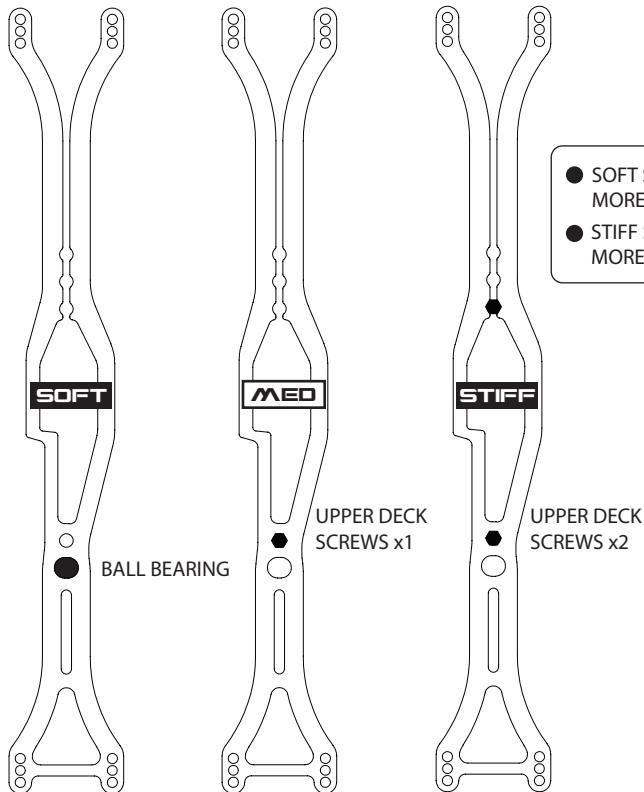
O10350
Aluminum Chassis T-Brace
O10351
Brass Chassis T-Brace (10g)
● CHASSIS T-BRACE PROVIDES MORE CHASSIS FLEX ADJUSTMENT.



TOP DECK FLEX SETTINGS
RECOMMEND SINGLE PIECE UPPER DECK FOR BASIC SETUP.
SUITED FOR MED-LOW GRIP SURFACE.

OPTION
TOP DECK (SPLIT) FLEX SETTINGS
TWO PIECE UPPER DECK MAKES MORE STEERING RESPONSE.
SUITED FOR HIGH GRIP SURFACE.

<INITIAL SETTING>

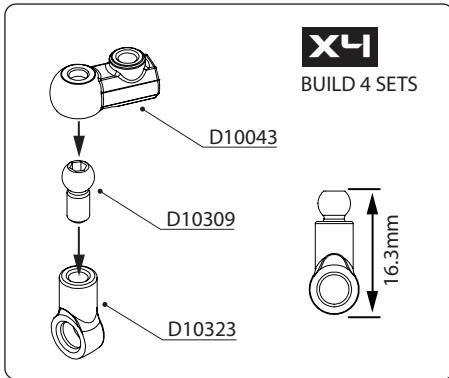
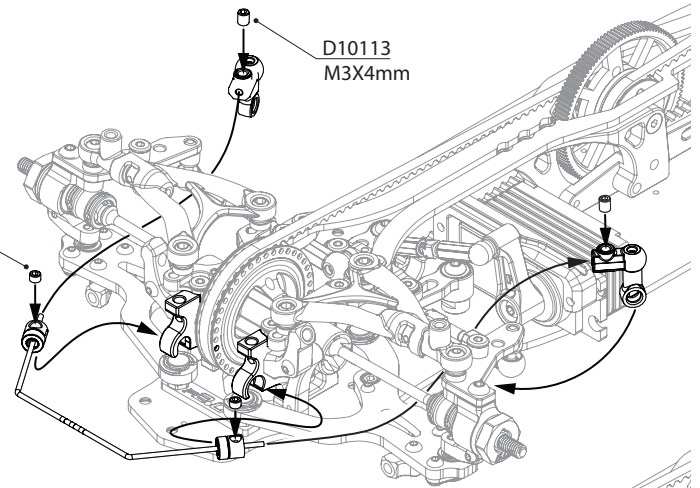
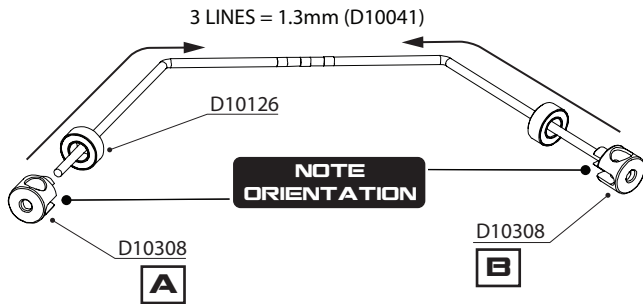


- D10100 M3 Shim Set (0.1/0.2/0.3mm)
- D10126 3x6x2.5 Ball Bearing
- D10366 Graphite Upper Deck (2.0mm) V2

- D10313 Aluminum Upper Deck Screw
- O10364 Graphite Front Brace, Wave Shape
- D10337 M3x6 ULP head Screw, 10 pcs

22

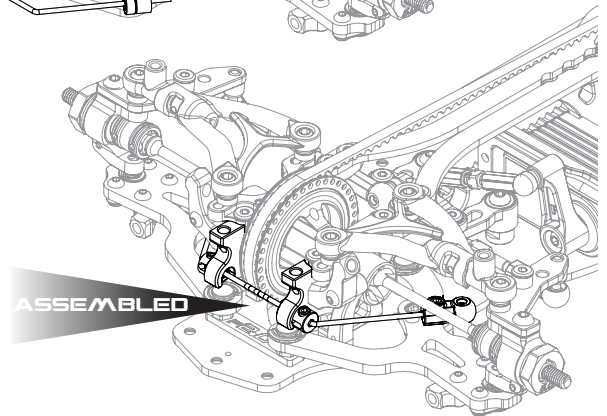
FRONT ANTI-ROLL BAR ASSEMBLY



FRONT ANTI-ROLL BAR

1.3 MORE CHASSIS ROLL,
INCREASE FRONT TRACTION.

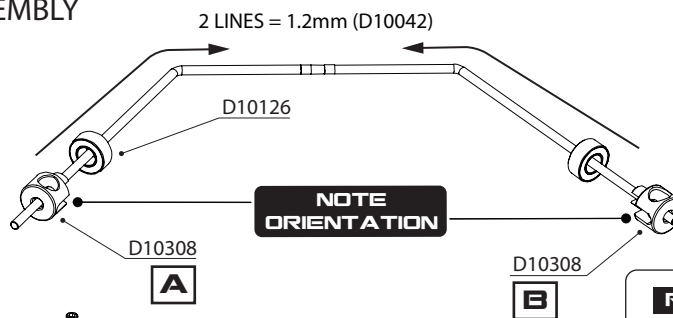
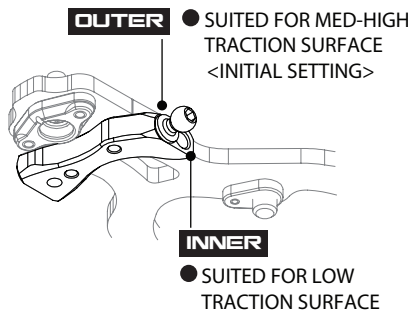
1.4 LESS CHASSIS ROLL,
DECREASE FRONT TRACTION.



23

REAR ANTI-ROLL BAR ASSEMBLY

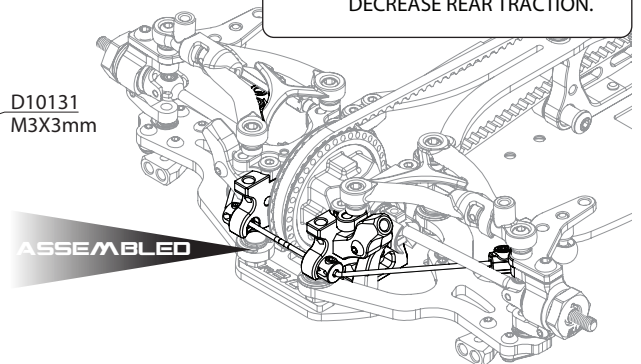
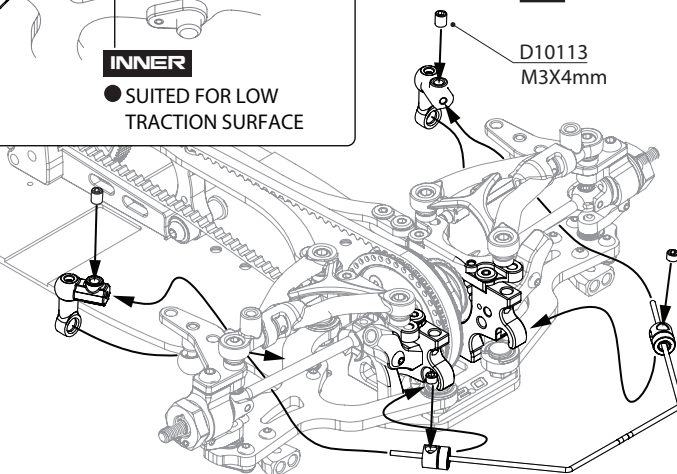
REAR ANTI-ROLL POSITION CHANGEABLE.



REAR ANTI-ROLL BAR

1.2 MORE CHASSIS ROLL,
INCREASE REAR TRACTION.

1.3 LESS CHASSIS ROLL,
DECREASE REAR TRACTION.



- D10041 Anti-Roll Bar 1.3, Front
- D10042 Anti-Roll Bar 1.2, Rear
- D10043 Plastic Anti-Roll Bar Ball Joint, 4 pcs
- D10113 M3x4 Set Screw, 10 pcs
- D10126 3x6x2.5 Ball Bearing
- D10131 M3x3 Set Screw, 10 pcs
- D10131 M3x3 Set Screw, 10 pcs

- D10308 Aluminum Anti-Roll Bar Bushing (A/B)
- D10309 Alum Anti-Roll Bar Ball, 4.3x8.5mm
- D10323 Roll Bar Short Ball Cup (4.3x9mm)

OPTION

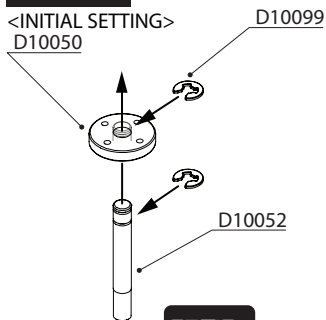
- O10145 Anti-Roll Bar 1.4, Front
- O10146 Anti-Roll Bar 1.3, Rear

24 SHOCK ASSEMBLY

BAG **E**

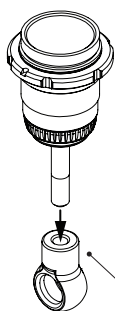
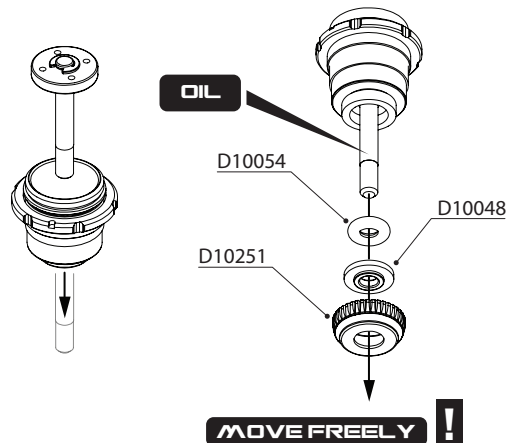
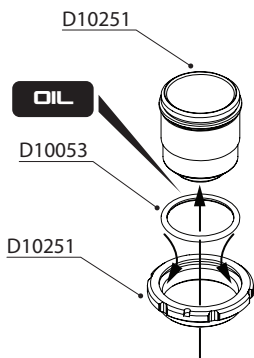
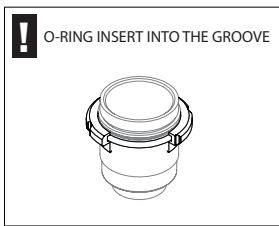
X4 BUILD 4 SETS SHOCKS

4 HOLES
<INITIAL SETTING>
D10050



OPTION

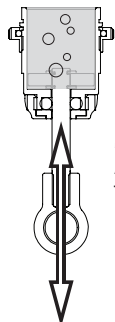
O10144
Titanium Coated Shock Shaft



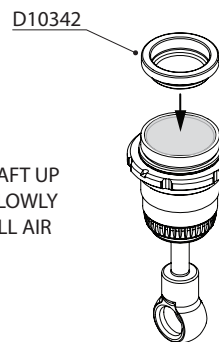
400 CST SHOCK OIL

EXTEND THE SHOCK SHAFT COMPLETELY. FILL THE SHOCK OIL INTO SHOCK BODY.

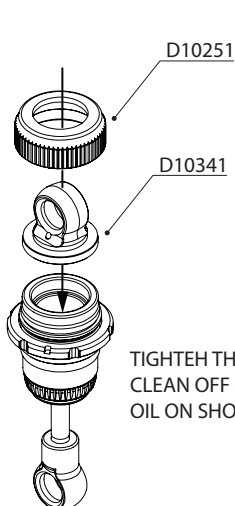
D10341



MOVE THE SHAFT UP AND DOWN SLOWLY TO REMOVE ALL AIR BUBBLES.



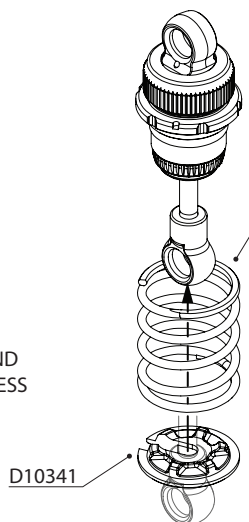
WHEN INSTALLING OIL SEALER CAP ONTO SHOCK BODY, EXCESS OIL WILL LEAK OUT FROM THE FILLED SHOCK BODY.



TIGHTEN THE CAP AND CLEAN OFF ANY EXCESS OIL ON SHOCK.

OPTION

O10140
Aluminum Shock Spring Retainer



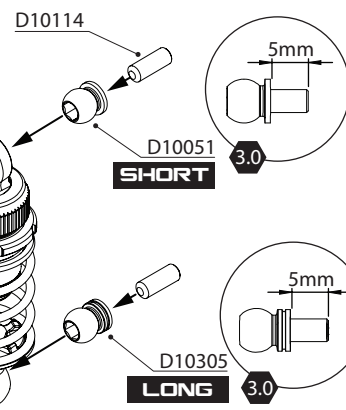
D10057 (2.6 - FRONT)
D10056 (2.5 - REAR)

D10341

OPTION

SHOCK LENGTH

52.3mm



SET SCREW SIZE IS SUBJECT TO CHANGE BASED ON SHOCK POSITION. **!**

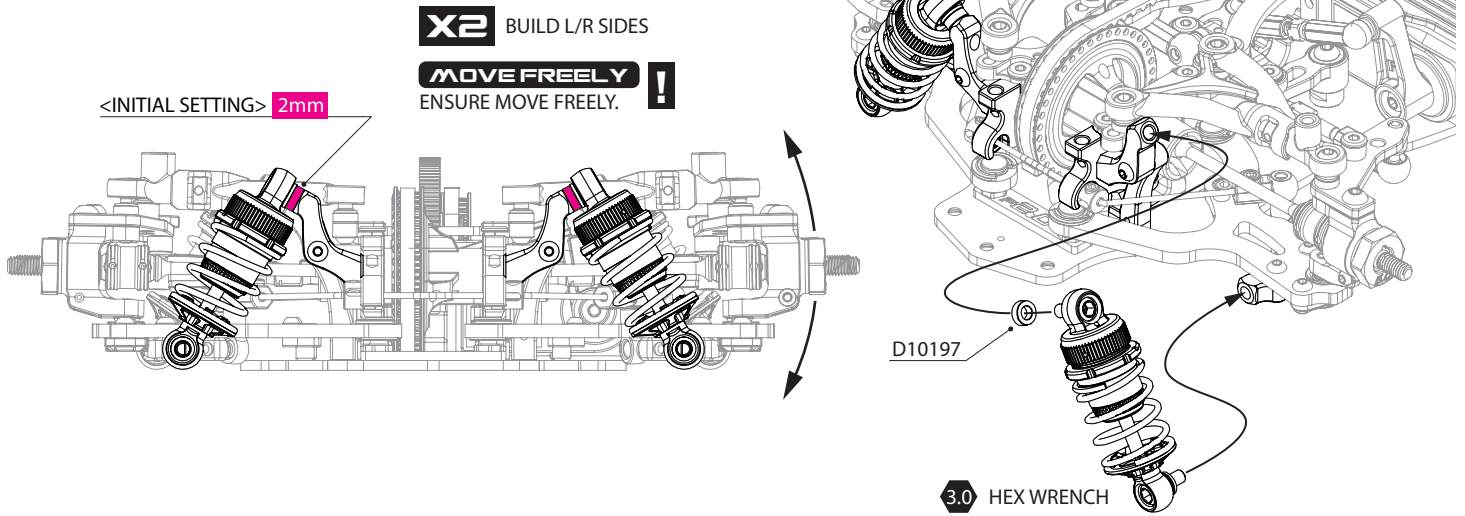
Part No.	Destiny Shock Springs (20mm)
D10056	Destiny Shock Spring (2.5), 20mm, Soft
D10057	Destiny Shock Spring (2.6), 20mm, Med.Soft
O10058	Destiny Shock Spring (2.7), 20mm, Medium

- D10048 Destiny Shock Maintenance Parts
- D10050 Destiny Shock Piston (4 holes), 4 pcs
- D10051 Destiny Shock Aluminum Ball (5.8mm), 8pcs
- D10052 Destiny Shock Shaft, 2 pcs
- D10053 O-Ring (13x1mm), 5 pcs
- D10054 Silicone O-Ring (Shock Shaft), 8 pcs
- D10099 M2 E-Clip, 10 pcs

- D10114 M3x8 Set Screw, 10 pcs
- D10251 Destiny Short Shock Body Set, 1 pair
- D10305 Destiny Shock Aluminum Ball (5.8mm), Long, 4pcs
- D10341 Destiny Shock Plastic Parts Set (V2)
- D10342 Destiny Shock Absorber Membrane (V2), 4 pcs
- D10343 Destiny Short Shock Set (V2), 4 pcs

25

FRONT SHOCK ASSEMBLY



SHOCK POSITION

SHOCK POSITION ADJUSTED BY DIFFERENT SIZE OF SHIM.

FRONT

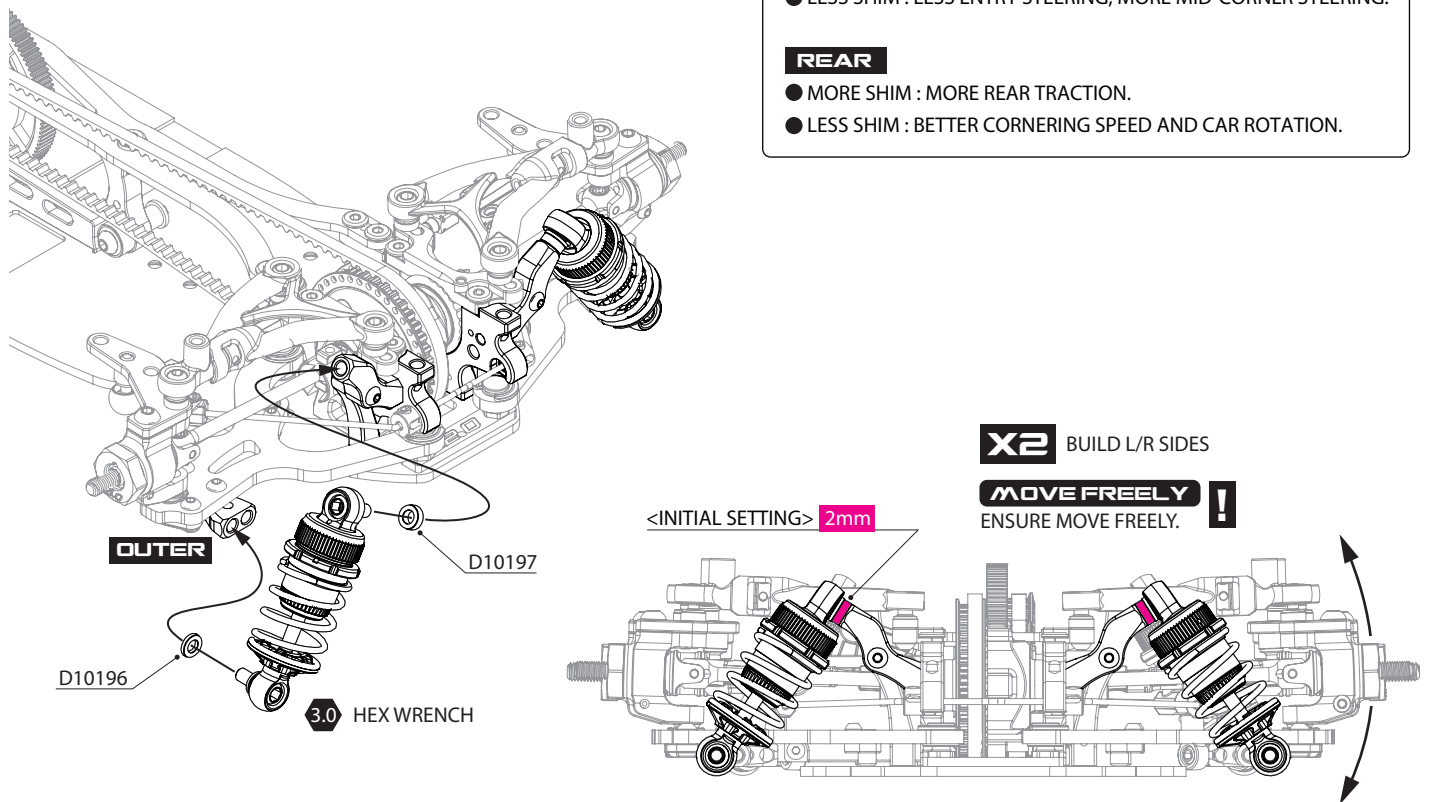
- MORE SHIM : MORE ENTRY CORNER STEERING.
- LESS SHIM : LESS ENTRY STEERING, MORE MID-CORNER STEERING.

REAR

- MORE SHIM : MORE REAR TRACTION.
- LESS SHIM : BETTER CORNERING SPEED AND CAR ROTATION.

26

REAR SHOCK ASSEMBLY



- D10196 3x5.5x1.0mm Aluminum Spacer (Black), 10 pcs
 D10197 3x5.5x2.0mm Aluminum Spacer (Black), 10 pcs

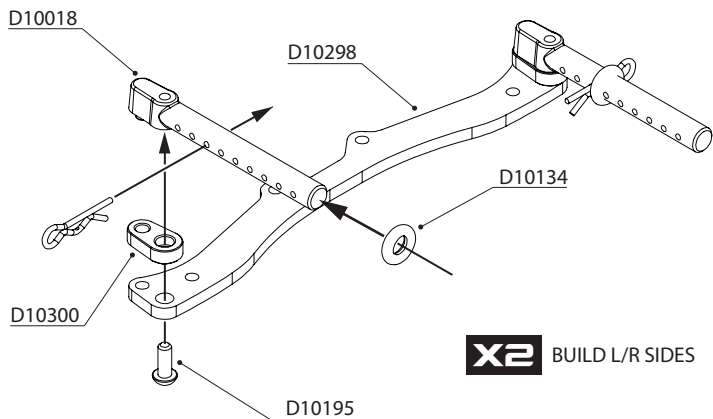
27 BUMPER AND BODY POSTS ASSEMBLY

REAR

BAG **F**

FRONT & REAR BODY CUSIONS

X4 INSTALL TO FRONT & REAR BODY POSTS

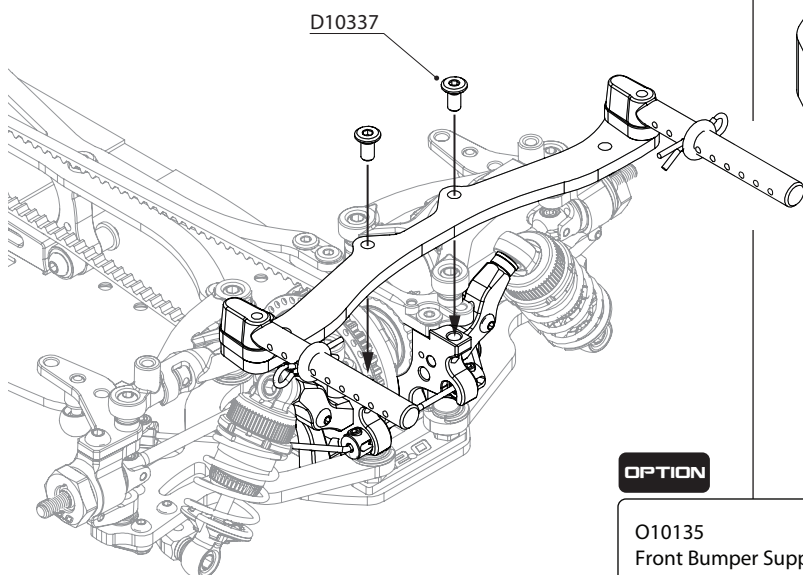
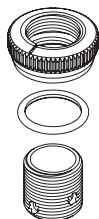


OPTION

RADTEC

#BA-10005
Alum Body Height Fine
Adjuster Set, BLACK

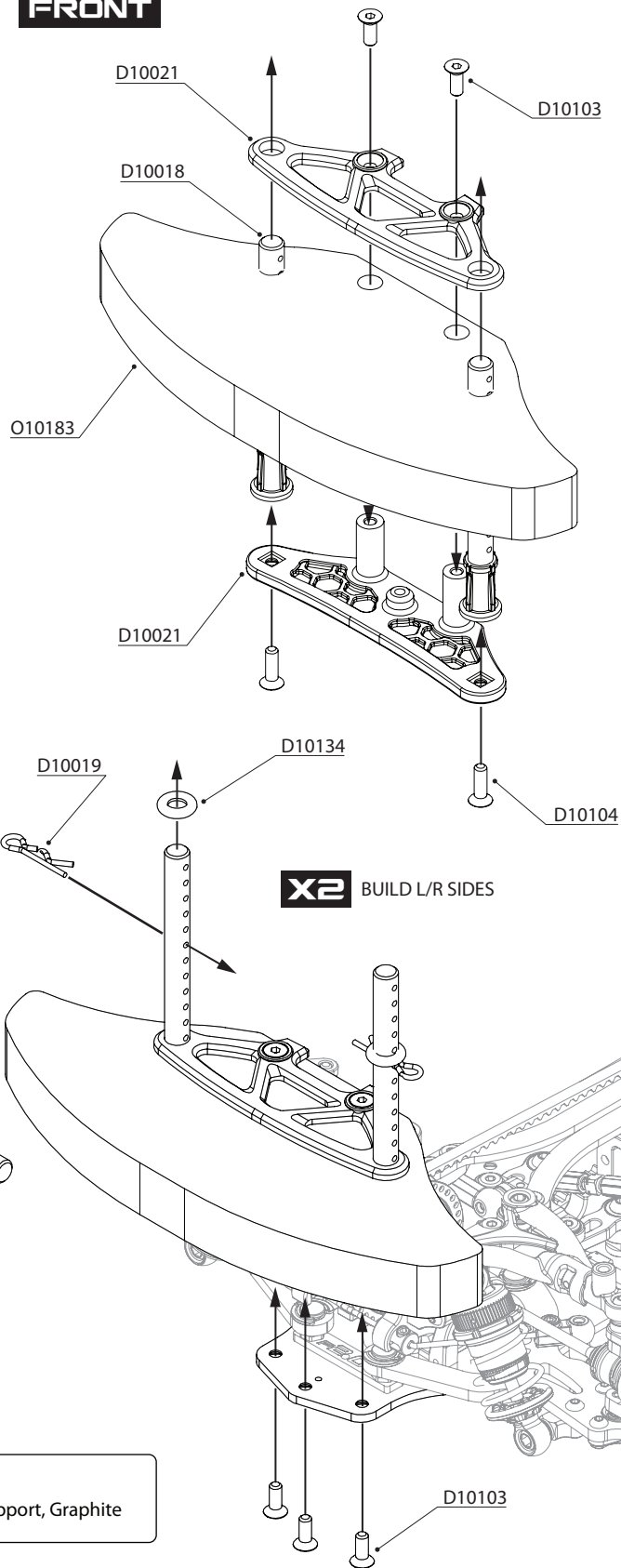
#BA-10002
Alum Body Height Fine
Adjuster Set, GREY



OPTION

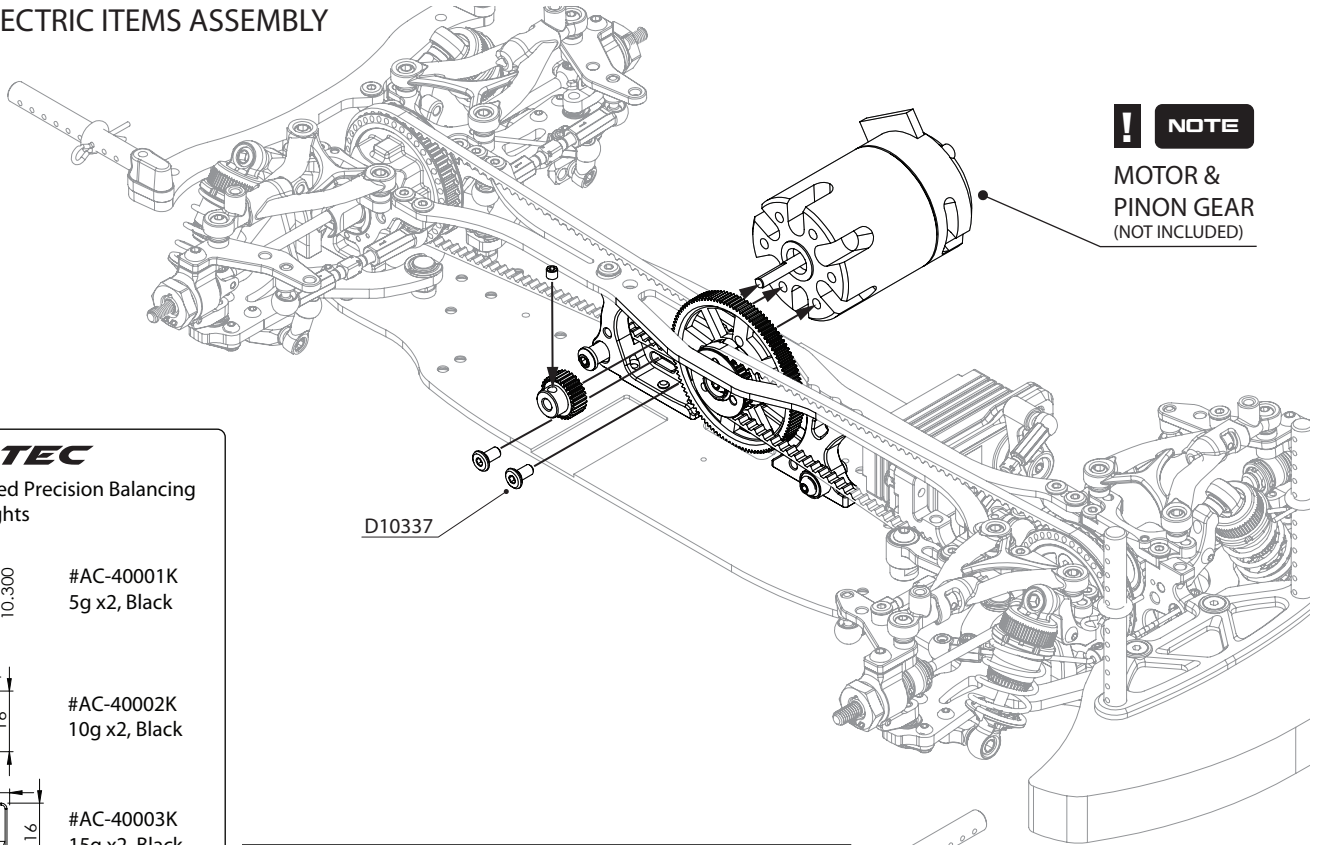
O10135
Front Bumper Support, Graphite

FRONT



- D10018 Plastic Front and Rear Body Post Set
- D10019 Body Clips
- D10021 Plastic Bumper Set
- D10103 M3x8 Flathead Screw
- D10104 M3x10 Flathead Screw

- D10134 Body Cusions, 10 pcs
- O10183 Urethane Foam Bumper (Large)
- D10298 Graphite Rear Body Post Mount
- D10300 Aluminum Rear Body Post Extension Mount
- D10337 M3x6 ULP head Screw, 10 pcs

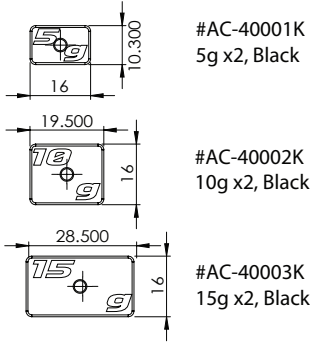


NOTE
MOTOR &
PINON GEAR
(NOT INCLUDED)

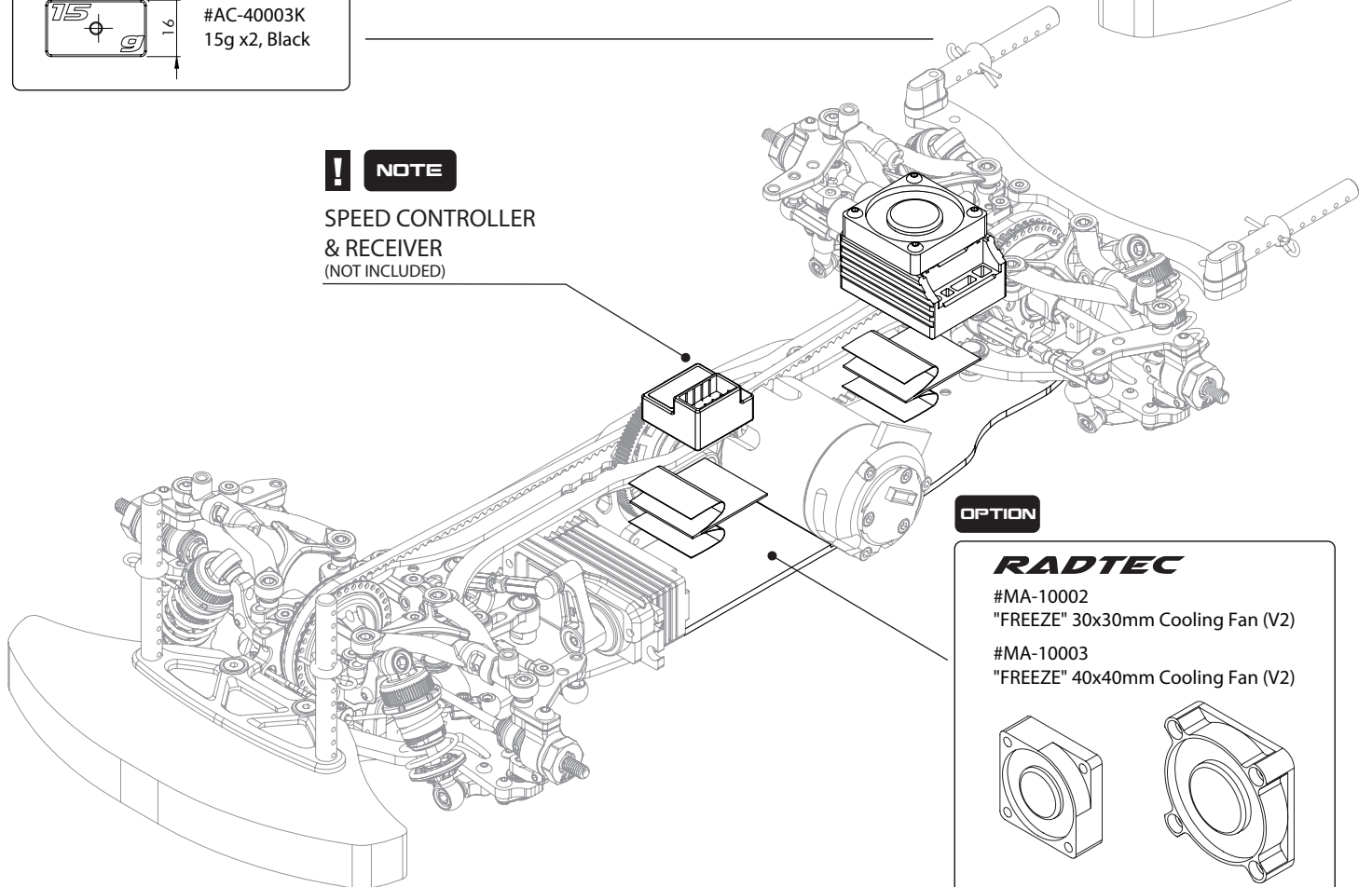
OPTION

RADTEC

CNC Machined Precision Balancing
Chassis Weights



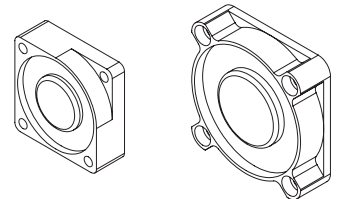
NOTE
SPEED CONTROLLER
& RECEIVER
(NOT INCLUDED)



OPTION

RADTEC

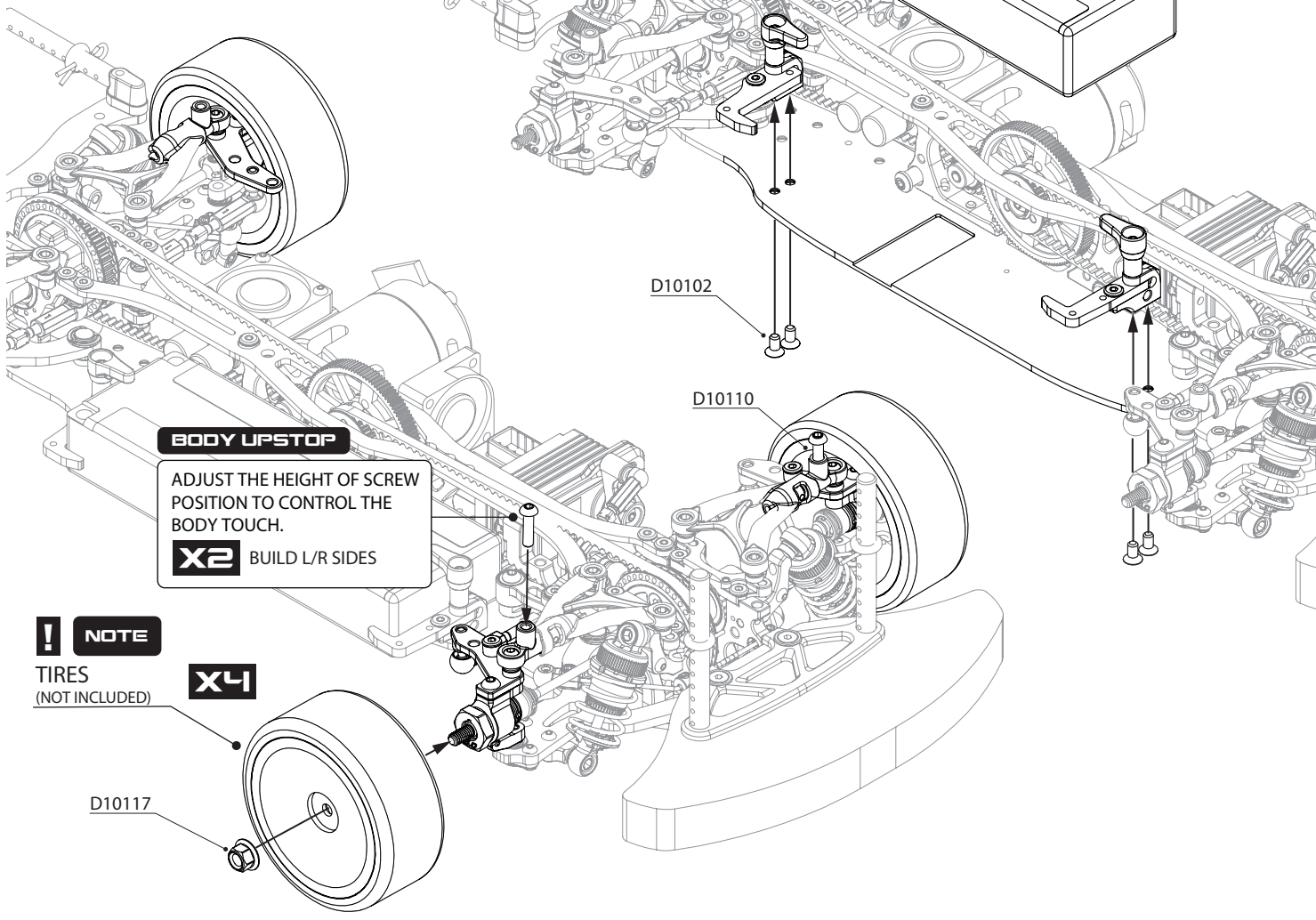
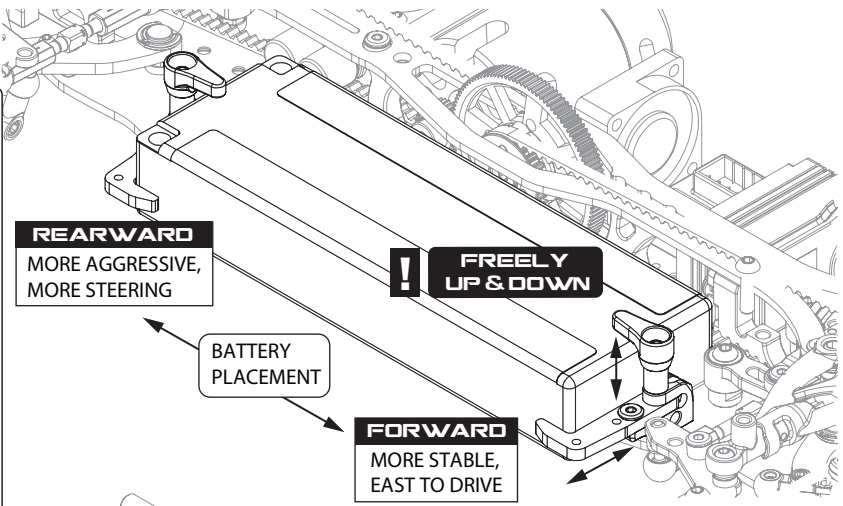
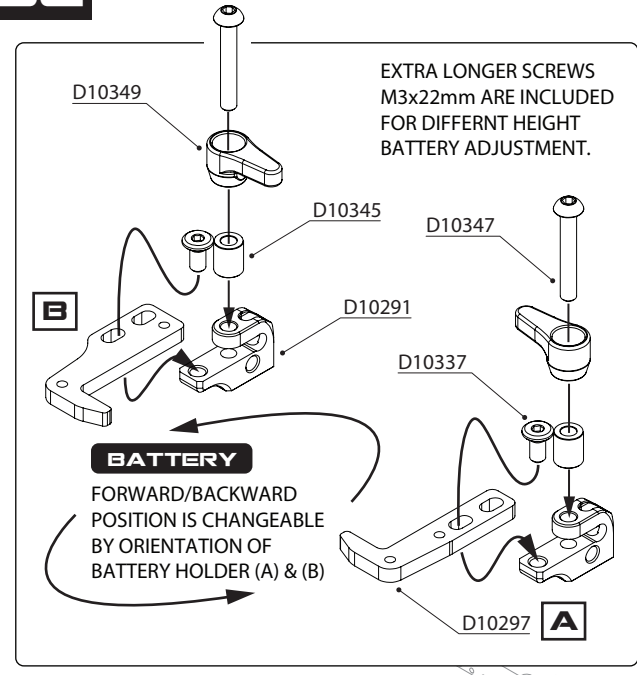
- #MA-10002
"FREEZE" 30x30mm Cooling Fan (V2)
- #MA-10003
"FREEZE" 40x40mm Cooling Fan (V2)



D10337 M3x6 ULP head Screw, 10 pcs

29

BATTERY AND TIRES ASSEMBLY



- D10102 M3x6 Flathead Screw, 10 pcs
- D10110 M3x12 Roundhead Screw, 10 pcs
- D10117 4mm Flanged Nut, 4 pcs
- D10291 Aluminum Battery Bracket
- D10297 Graphite Battery Holder Set (A & B)

- D10337 M3x6 ULP head Screw, 10 pcs
- D10345 3x5.5x6.5mm Aluminum Spacer (Black), 4 pcs
- D10349 Battery Backstop
- D10347 M3x20 Roundhead Screw, 10 pcs
- D10348 M3x22 Roundhead Screw, 10 pcs

DATE / /

DRIVER NAME

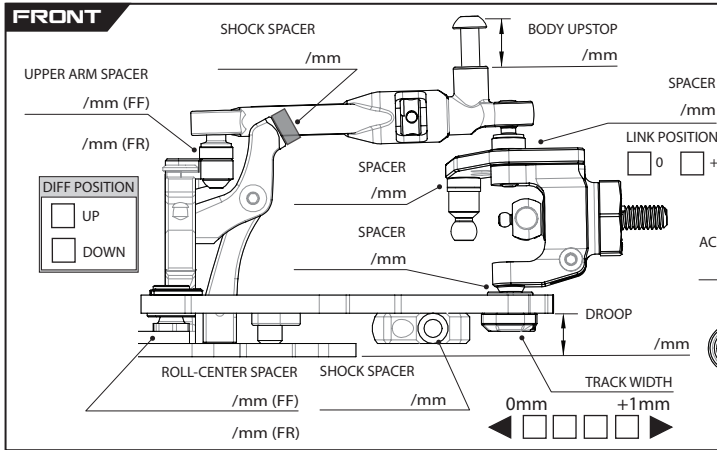
TRACK

CONDITION CARPET ASPHALT

TRACTION HIGH LOW

TEMP °C AIR TRACK

EVENT BEST LAP TIME QUALIFYING POSITION FINAL POSITION



FRONT DIFF SPOOL DIFF # /CST

WHEEL HUB 4.0mm 5.0mm

WHEEL SPACER /mm

ACKERMANN SPACER /mm

CENTER PLATE ● (8.5) ● (8.0)

STEERING SPACER /mm

RIDE HEIGHT /mm

CAMBER °

CASTER 4° 5° °

SWAY BAR 1.3 1.4 OTHERS

DOUBLE JOINT DRIVE SHAFT KIT (44.5) LONG (47)

TOE ANGLE °

SHOCK ABSORBER

OIL /CST

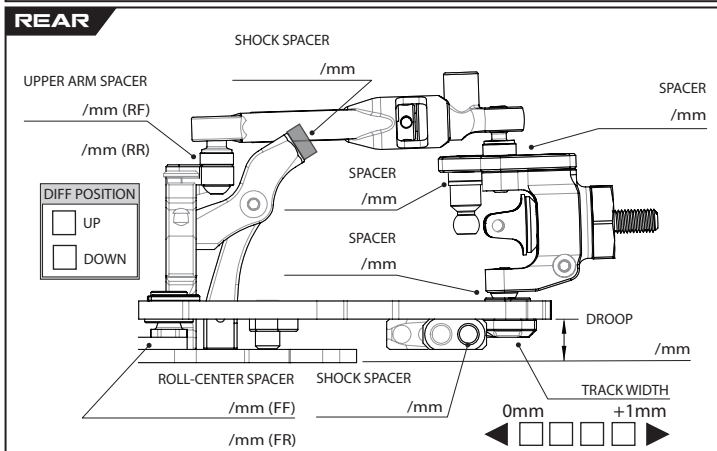
LENGTH /mm

REBOUND %

SPRING 2.5 2.6 2.7 OTHERS

ABSORBER MEMBRANCE

PISTON 3 HOLES 4 HOLES



DIFF OIL # /CST

WEIGHT g

WHEEL HUB 4.0mm 5.0mm

WHEEL SPACER /mm

ANTI-ROLL BAR POSITION INNER OUTER

REAR LINK POSITION

RIDE HEIGHT /mm

CAMBER °

CASTER 0° 1° 4° 5° °

SWAY BAR 1.2 1.3 OTHERS

DRIVE SHAFT ALUM SPRING STEEL

TOE ANGLE °

SHOCK ABSORBER

OIL /CST

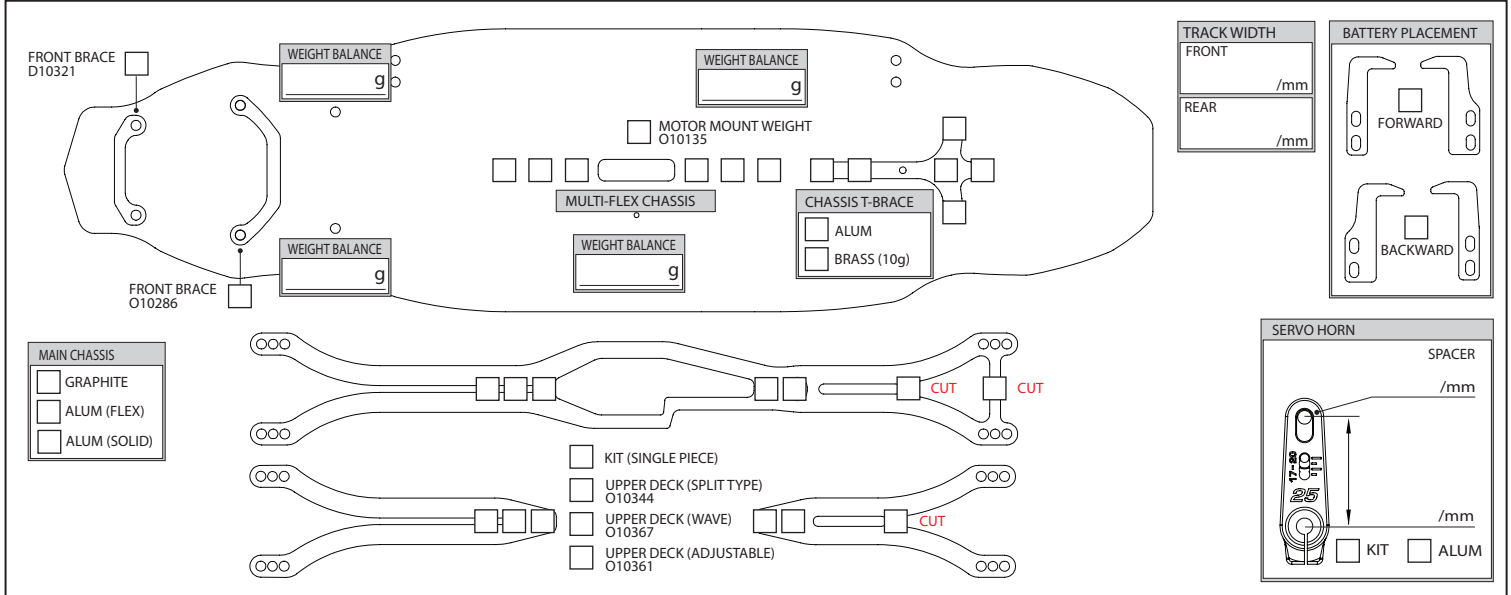
LENGTH /mm

REBOUND %

SPRING スプリング 2.5 2.6 2.7 OTHERS

ABSORBER MEMBRANCE

PISTON 3 HOLES 4 HOLES



TIRE SETTING

FRONT	REAR
TIRE	TIRE
INSERT	INSERT
WHEEL	WHEEL
ADDITIVE	ADDITIVE
ADDITIVE TIME /MINS	ADDITIVE TIME /MINS

MOTOR TURNS ROTOR /mm MOTOR TIMING °

PINON GEAR T SPUR GEAR T FINAL RATIO

ESC SETUP

BATTERY SHORTY BODY TOTAL WEIGHT /g

NOTE



DESTINY

<http://www.destinyracing.jp>