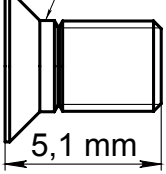


# Awesomatix C01B-RS steel lower deck installation notes.

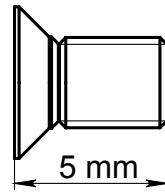
## Screw Set for Awesomatix C01B-RS steel lower deck.

Note the shoulder



### ST112-5

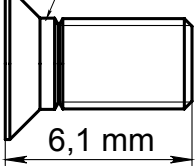
Used to secure AM278-EVO Bulkheads.



### ST212-5

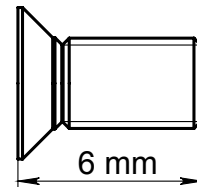
Used to secure motormount, servomount and AM279 rear belt tensioner.

Note the shoulder



### ST112-6

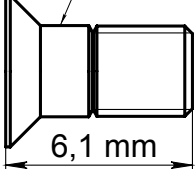
Used to secure bumper and dampers **without** ST237 spacers.



### ST212-6

Used to secure battery holders and AT21ST-A pivot balls at low roll centres ( $\leq 2.5\text{mm}$ ).

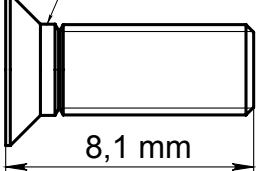
Note the longer shoulder



### ST112-6L

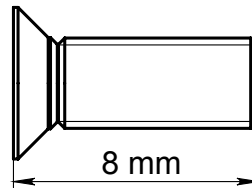
Used to secure dampers **with** ST237 spacers.

Note the shoulder



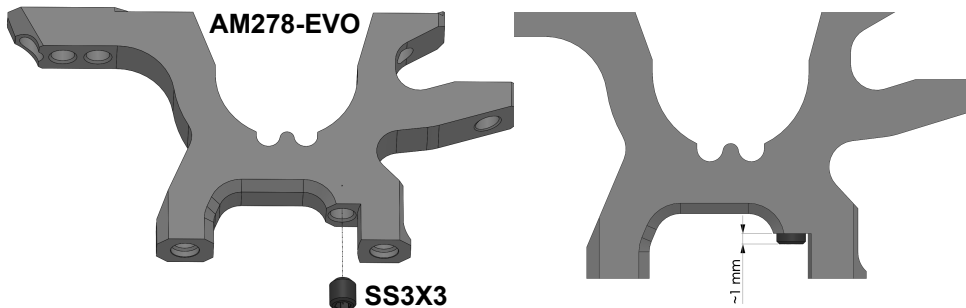
### ST112-8

Use these screws to mount P12X swaybar holders.



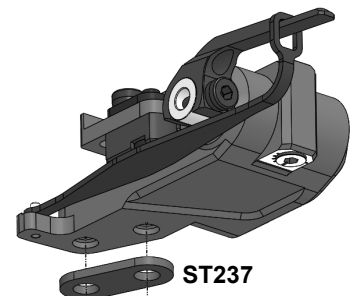
### ST212-8

Used to secure AT21ST-A at high roll centres ( $> 2.5\text{mm}$ ).



Insert **SS3X3** set screw into the **AM278-EVO** bulkhead as shown (protruding 1mm) when the dampers are mounted to the chassis **without** the **ST237** spacers. When using the **ST237** spacers, the **SS3X3** screws should be either fully screwed in or completely removed altogether.

Use **ST237** spacer under each damper as shown:

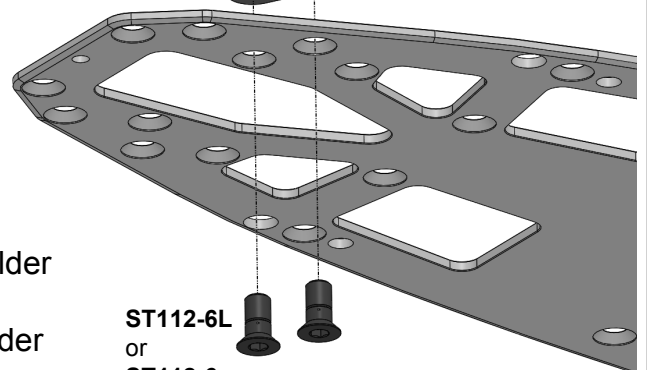


Some parts may require a slight chamfering ( $\sim 0.1\text{mm}$ ) of their mounting holes for proper installation - notably **AM24-20** servomount. It can be done by hand with a sharp 3.2-6mm range drill bit.

Similarly, an additional chamfer is recommended on the edge of **C45R** to increase clearance with **P13-4** toe link ball joint in order to avoid unwanted interference during suspension travel.

Use **ST112-6L** centering screws with longer shoulder when mounting dampers **with** **ST237** spacers.

Use **ST112-6** centering screws with shorter shoulder when mounting dampers **without** **ST237** spacers.



ST112-6L  
or  
ST112-6