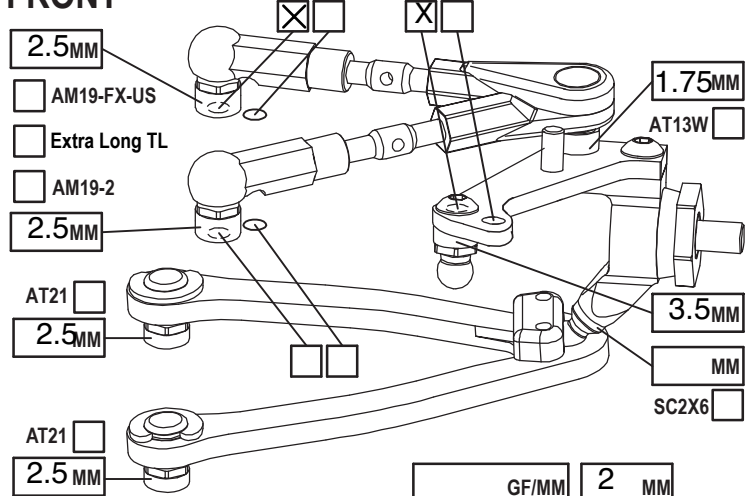


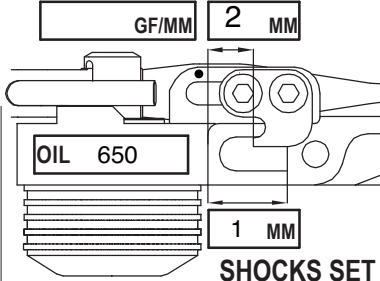
NAME Steven cornell
 COUNTRY Australia
 RACE Newcastle GP re run
 TRACK Newcastle

DATE Feb 22 TEMP. °C AIR / TRACK /
 ASPHALT OUTDOOR INDOOR CARPET
 TRACK CONDITION TECHNICAL MIXED FAST
 TRACTION LOW MEDIUM HIGH

FRONT

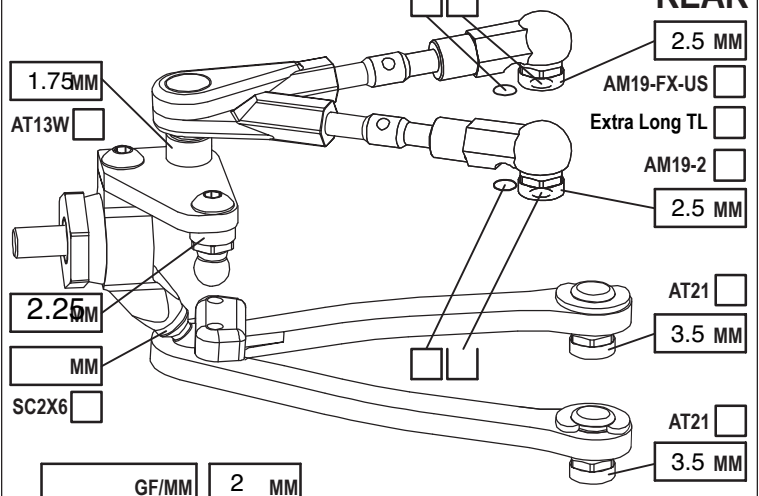


CAMBER ANGLE / ° 2
 CASTER ANGLE / ° 4
 TOE ANGLE / ° 1.25
 RIDE HEIGHT / MM 5.6
 DOWNSTOP / MM 5.6
 UPWNSTOP / MM
 STABILIZER Ø / MM
 LOW ARM C04M1+9.0 +8
 STEER. ARM AM14LS
 WHEEL SPACER / MM
 FRONT DRIVE SPOOL GB2B LOW HIGH
 DIFF. OIL
 DIFF WASHERS
 WHEELHUB AM06WL

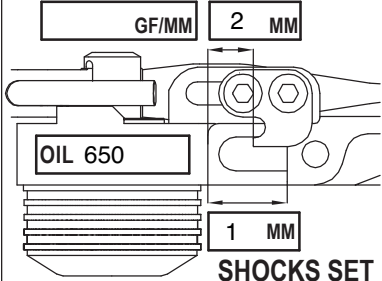


ROTOR STD
 SPRING STD S
 DAMPER D2.2
 SRS/RHS ARR. I II
 PSS SETUP 25% 15%

REAR

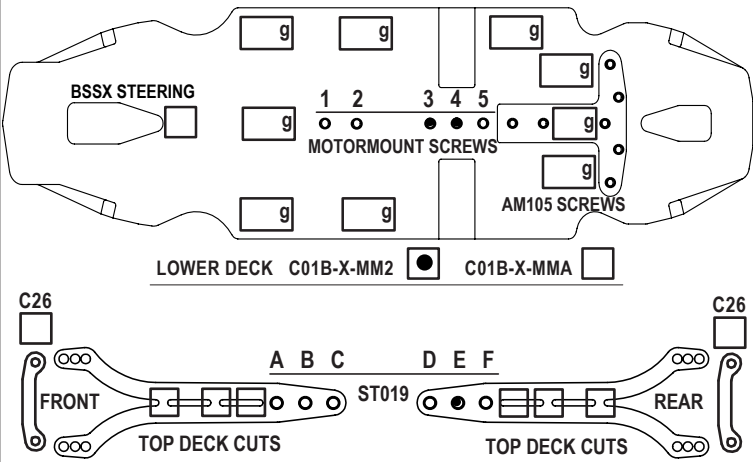


CAMBER ANGLE / ° 2
 CASTER ANGLE / ° 2
 TOE ANGLE / ° 3
 RIDE HEIGHT / MM 6
 DOWNSTOP / MM 4.6
 UPWNSTOP / MM
 STABILIZER Ø / MM 1.1
 LOW ARM C04M1+8.0 +7
 STEER. ARM AM23-1
 WHEEL SPACER / MM
 REAR DRIVE GB2B LOW HIGH
 DIFF. OIL 8,000 DIFF WASHERS Small
 WHEELHUB AM06WL



ROTOR STD
 SPRING STD S
 DAMPER D2.2
 SRS/RHS ARR. I II
 PSS SETUP 25% 15%

CHASSIS FLEX AND WEIGHT SETTINGS



TIRES GQ 36 handout

INSERTS
 WHEELS
 ADDITIVE Trinity TIME - FR RR
 TOTAL WEIGHT 1329 WEIGHT DISTRIBUTION F 48 % R 52 %
 NOTES: 15 min warmers on 65

MOTOR LATERAL SHIFT / MM
 MOTOR R1 ACKERMANN POSITION FWD
 SPUR PINION RATIO
 BODY Wolverine 5-6mm fwd SERVO R1
 WING Hard STEER TRAVEL IN OUT 25
 ESC R1 BATTERY R1 5200 shorty
 RECEIVER
 RADIO
 ESC SETTING
 BEST LAP TIME 14.5 QUALIF./FINAL POSITION 2nd / 3rd