

Part shown is TC701.3 for the right side. Please reference all dimensions and tolerances for TC701.4 which is a mirrored part for the left side.

TC701.3

TC701.4

M3x0.5 - 6H  $\nabla$  4.00

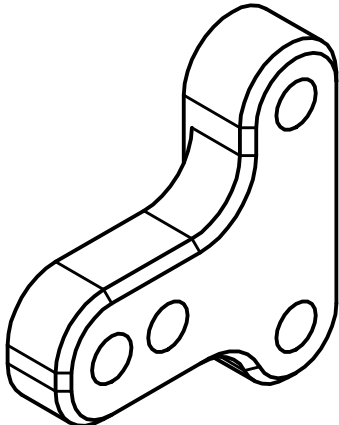
.5mm chamfer wraps around part

Use included artwork file 1up-arrow-etch for laser etching on back of parts. Logo height is 4mm, bottom of logo is positioned 1mm from outer edge.

All tolerances are  $\pm$  0.05mm unless otherwise noted.

**PROPRIETARY AND CONFIDENTIAL**

THE INFORMATION CONTAINED IN THIS DRAWING IS THE SOLE PROPERTY OF JRC PERFORMANCE LLC. ANY REPRODUCTION IN PART OR AS A WHOLE WITHOUT THE WRITTEN PERMISSION OF JRC PERFORMANCE LLC IS PROHIBITED.



DRAWN Randy Caster	7/5/2017
CHECKED	
QA	
MFG	
APPROVED	

JRC Performance, LLC

TITLE  
TC701.3 & TC701.4  
Material: 7075 T6 Aluminum  
Surface Treat: Fine Black Anodize  
Formed By: Machined

SIZE A	DWG NO TC701.3 - TC701.4	REV
SCALE 3:1	SHEET 1 OF 1	