



Driver: Minoru Utsugi Date: _____

Track/Event: YATABE ARENA

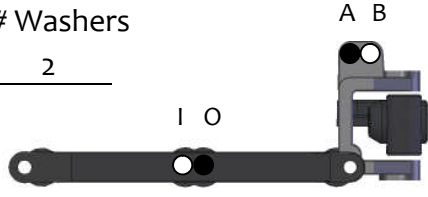
Front Suspension



Ride Height: 22 mm
 Camber: 1° Toe: 0°
 Ackerman: Forward Back

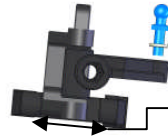
Servo: Fwd Back
 Axles: Trailing Inline
 Caster Block:
 20° 25° 30°

Washers 2



Axle Height:

- High
 Med
 Low



Washers 2

Position:

- Fwd Back

Front Shocks

	Spring	Piston	Oil
AE	Brown	#2	#30
Losi			
Kyosho			
HB			

Shock Length: 20mm (シャフト長)

Compressed Length: _____

Rear Suspension



Ride Height: 23mm
 Camber: 1°
 Transmission Height: 0 mm

Sway Bar: None

Washers 1

Wing

Height

- E-Speed High
 E-Speed Low

1 2

1 2

I M O

A B C

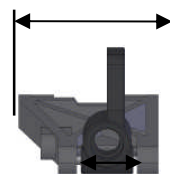


Anti-Squat:

1.6mm

Arm Position:

- Back Mid Fwd



Hub Position:

- Back Mid Fwd

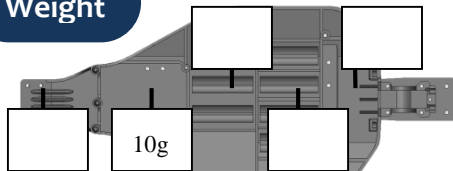
Rear Shocks

	Spring	Piston	Oil
AE	Silver	#2	#30
Losi			
Kyosho			
HB			

Shock Length: 28.5mm (シャフト長)

Compressed Length: _____

Weight



Total Weight: _____

F/R Bias: _____ / _____

Notes/Rants/Excuses

- アソシシヨック使用時のセッティングです。
- ブラックコンポジットシャーシ使用
- TEAM AJ アルミ製トーインバー使用

Wing: X-FACTORY ハイダウンフォースウイング (X-5用)

Battery: SPEED POWER LiPo4000 Motor: SPEED PASSION C3 8.5 Gearing: 25 / 81