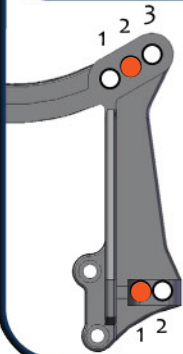




Driver: Ellis Stafford Date: 16.01.2010
 Track / Event: Maritime Raceway - Petit Race
 Layout: Open / Tight Surface: Smooth / Bumpy
 Grip: Low High Weather: _____

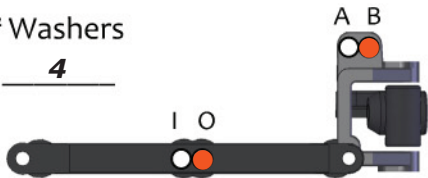
Front Suspension



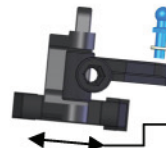
Ride Height: Just above level
 Camber: -1° Toe: 1°
 Ackerman: Forward Back

Servo: Fwd Back
 Axles: Trailing Inline
 Caster Block:
 20° 25° 30°

Washers
4



Axle Height:
 High
 Med
 Low



Washers
2
 Position:
 Fwd Back

Shocks & Tires

Brand	Spring	Piston	Oil
Losi	Black	Red	40 wt

Limiter - Top: _____ Bottom: _____
 Shock Length: _____
 Compressed Length: _____

Front Tire: Schuey Mini Pins Yellow
 Insert: _____

Rear Suspension

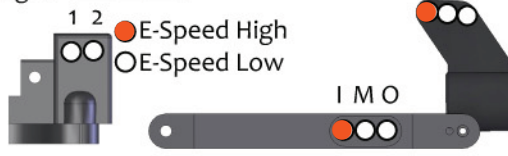


Ride Height: Level
 Camber: -1°
 Transmission Height: Low

Sway Bar: _____

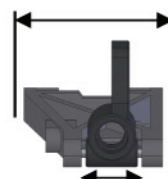
Washers
-

Wing Height
 E-Speed High
 OE-Speed Low



Anti-Squat:
3

Arm Position:
 Back Mid Fwd



Hub Position:
 Back Mid Fwd

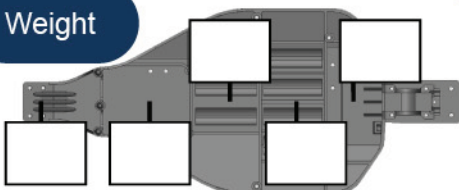
Shocks & Tires

Brand	Spring	Piston	Oil
Losi	Red	Red	30 wt

Limiter - Top: _____ Bottom: _____
 Shock Length: _____
 Compressed Length: _____

Rear Tire: Schuey Mini Pin Yellow
 Insert: _____

Weight



Total Weight: _____

F/R Bias: _____ / _____

Notes / Rants / Excuses

Rudsbits - 2 under ESC, 2 behind servo

Setup pretty similar to last year race, only some small changes

Wing: Front wing used

Battery: Speed Passion

Motor: Speed Passion

Gearing: _____ / _____