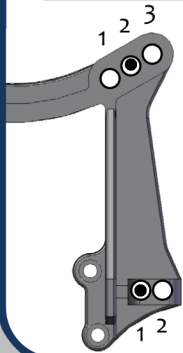




Driver: Clayton Easley Date: 05/2011
 Track/Event: Starting Set-Up

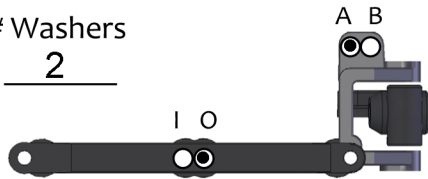
Front Suspension



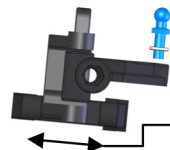
Ride Height: Front Arms Level
 Camber: -1 ° Toe: 0 °
 Ackerman: Forward Back

Servo: Fwd Back
 Axles: Trailing Inline
 Caster Block:
 20° 25° 30°

Washers 2



Axle Height:
 High
 Med
 Low



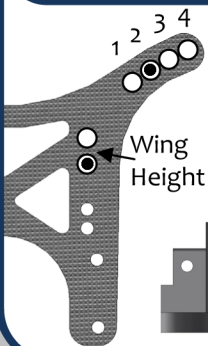
Washers 2
 Position:
 Fwd Back

Front Shocks

	Spring	Piston	Oil
AE	Brown	#2	30
Losi	Orange	56	30
Kyosho			

Shock Length: .030" inside limiter
 Compressed Length: _____

Rear Suspension

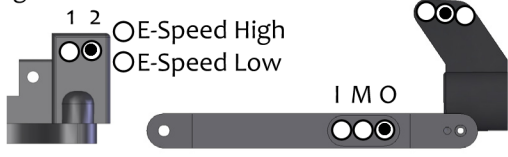


Ride Height: CVD Level, unless it's bumpy
 Camber: -1 °
 Transmission Height: .030" (slvr)

Sway Bar: _____

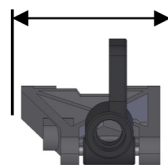
Washers _____
 Wing Height _____

E-Speed High
 E-Speed Low



Anti-Squat: .060

Arm Position:
 Back Mid Fwd



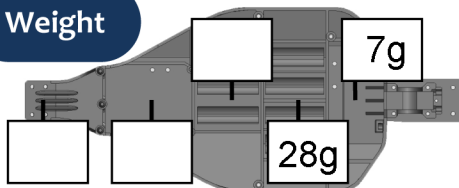
Hub Position:
 Back Mid Fwd

Rear Shocks

	Spring	Piston	Oil
AE	Silver	#2	30
Losi	Pink	57	27.5
Kyosho			

Shock Length: _____
 Compressed Length: An o-ring outside

Weight



Total Weight: _____
 F/R Bias: _____ / _____

Notes/Rants/Excuses

Saddle Pack Chassis, Aluminum Servo-Saver Replacement

Schuey Big Bores: 4x #54, 32.5, 2.5 spring Front; 4x #54, 27.5, 3.5 spring Rear

TLR Big Bores: 4x #54, 35, Orange spring Front; 4x #54, 27.5, Pink spring Rear

Wing: JConcepts 6.5" wing on Losi wing mounts

Battery: Speed Power Motor: SP 13.5, boosted Gearing: 24 / 75