

S12-1M

Track Conditions

Size: Open Med. Tight
Traction: High Med. Low
Surface: Smooth Med. Bumpy

Name: SWORKz
Date: 2015.10.05
Track: Yatabe Arena

Diff. Oil
Rear: _____
#5000

Diff. Type
 Gear Ditt
 Ball Ditt

Electric System

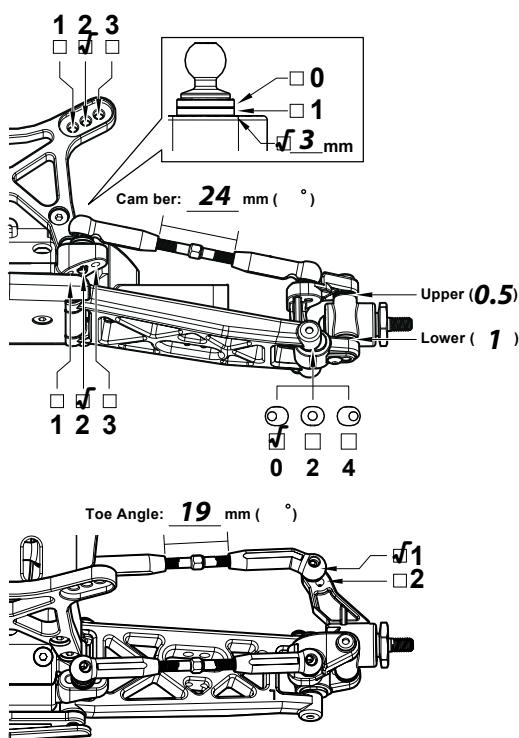
ESC Type: Hobby Wing V3.1
Motor Type: Hobby Wing V10 6.5T
Motor Gear/Spur Gear: 22/82T
Battery Type A: Saddle Pack _____
B: Shorty Pack ORCA

Tire

Front
Type: Schumacher
Foam: No Use

Rear
Type: Schumacher
Foam: Standard

Front Suspension



Front Shocks

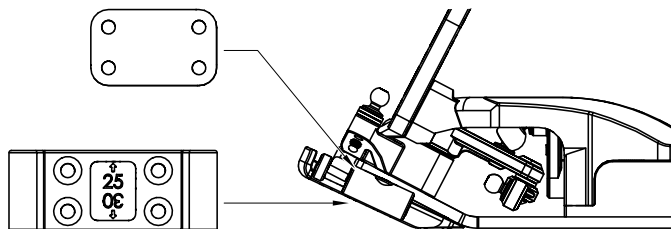
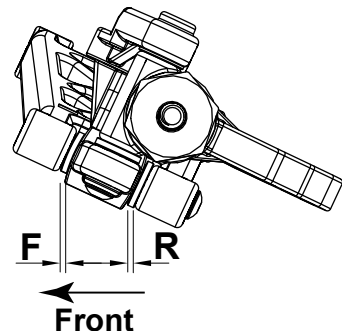
Oil: #650
Pistons: 1.5x2
Spring: Yatabe Red
Spacer: 5 mm

Body: SWORKz
Wing: SWORKz

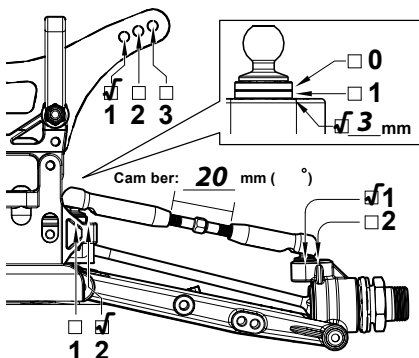
Front Lower Arm Holder
Adjustment
 0.5mm 1mm

Front Lower Arm Holder
 25° 30°

Ride High: 16 mm



Rear Suspension



Rear Shocks

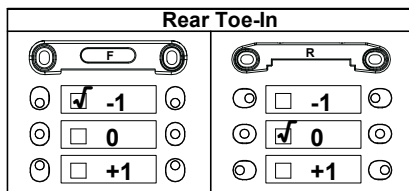
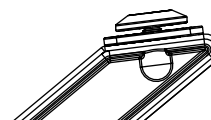
Oil: #550
Pistons: 1.5x2
Spring: Yatabe OR
Spacer: 3 mm

Wing spacer 2 mm

Wheelbase F 3 mm
adjustment R 0 mm

Sway bar Use _____ mm
 None

Ride High: 16 mm



Notes: _____

