

## DRIVER, TRACK AND RESULTS

**DRIVER** Jiri Mara **COUNTRY** CZ **WEATHER** AIR TEMP 18 TRACK TEMP  DRY  INTERMEDIATE  WET  
**RACE** Lestr cup **DATE** 28.01.17 **QUALY POS.** **STARTING POS.** **FINAL POS.** 4 **FASTEST LAP**  
**TRACK** **TYPE**  INDOOR  OUTDOOR **STYLE**  TIGHT  MEDIUM  OPEN  
**SURFACE GRIP**  LOW  MEDIUM  HIGH **CONDITION**  SMOOTH  ROUGH  
**TYPE**  HARD PACKED  CLAY  CARPET  MULTI/SURFACE  GRASS  BLUE GROOVE  DIRT  ASTRO-TURF

**FRONT SHOCK ABSORBERS** **REAR**  
50wt cst OIL 45wt cst  
4dots SPRINGS 3dots  
0 mm REBOUND 0 mm  
2 mm LIMITERS 2 mm  
 N° HOLES 2 Ø 1.6 mm PISTONS N° HOLES 2 Ø 1.7 mm  
 PISTONS TYPE  STOCK  CONICAL  SQUARE  
 SHORT  LONG SPRING BUCKETS  SHORT  LONG  
 BLADDER SEAL  BLADDER  
 EMULSION TYPE  EMULSION

FRONT **ANTI-ROLL BARS**  REAR  
           
 1.0 1.2 1.4 1.6 1.8 1.0 1.2 1.4 1.6 1.8

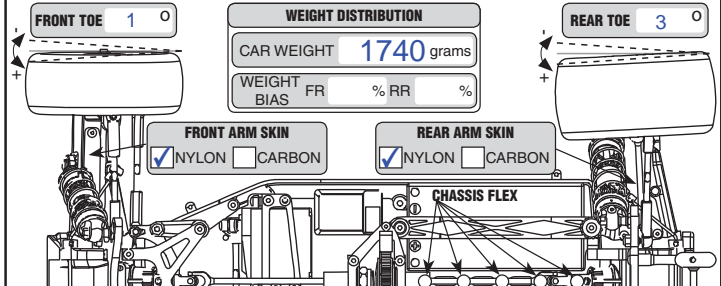
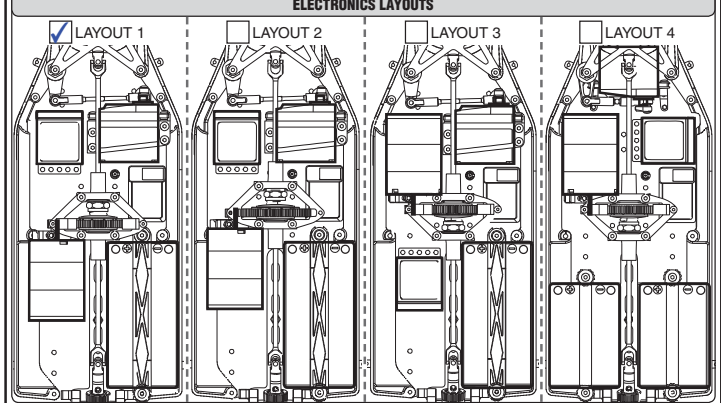
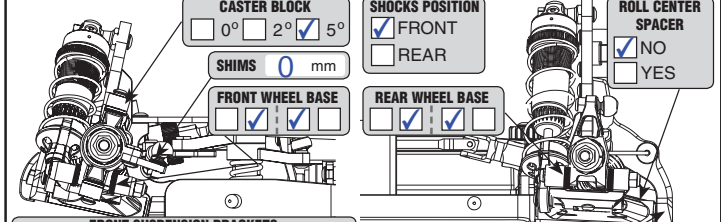
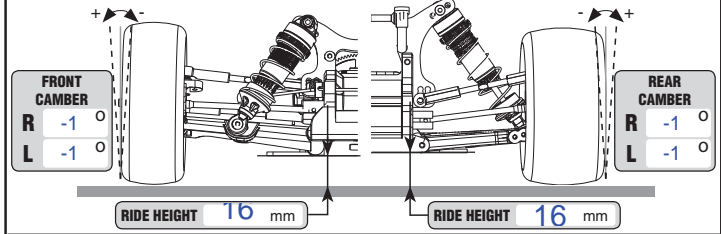
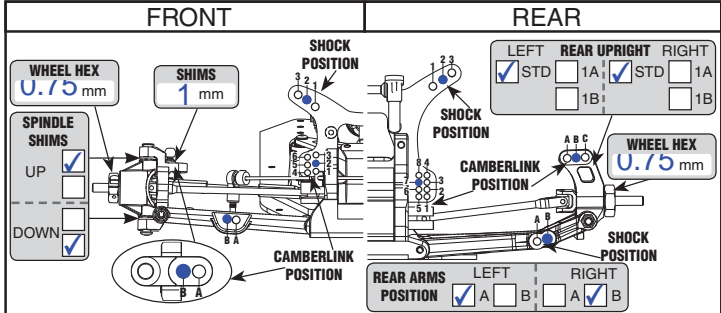
**TRANSMISSION**  
 FRONT DIFF 10000 cst  SLIPPER  CENTER DIFF 10000 cst REAR DIFF 10000 cst

**GEARING**  
 PINION 20 Teeth SPUR GEAR 86 Teeth

**ELECTRONICS**  
**BATTERY**  
 BRAND \_\_\_\_\_ CAPACITY \_\_\_\_\_ mAh  
**MOTOR**  
 BRAND \_\_\_\_\_ TYPE 4.5T TIMING Stock  
**ESC**  
 BRAND \_\_\_\_\_ TYPE \_\_\_\_\_

**AERODYNAMIC CONFIGURATION**  
 BODY BRAND Serpent TYPE 500598  
 REAR WING BRAND Serpent TYPE 500374  
 REAR WING WIDTH 6.5 REAR WING LIP 0 mm  
 FRONT WING  YES  NO TYPE \_\_\_\_\_

**FRONT TIRES** Controlled Tire  **REAR**  
Sch. Stagger MAKE Sch. Mini pin  
 TYPE \_\_\_\_\_  
White COMPOUND White  
PL INSERTS PL  
Serpent WHEELS Serpent  
 ADDITIVE \_\_\_\_\_



REMARKS