

Driver and Event

Name Stephen Maizer
 Date 9/2/2011
 Event Eastern States Championchips
 Weather sunny 85 deg
 Result 11th overall

Track Conditions

Surface clay/sand mix hard like concreet !
 Grip Level med to high
 Track Condition blue grove



Driver Notes

Chassis 8mm longer c/f with top deck.
 mod front arms to move yokes foward 2mm.

Electrics and Gearing

E.S.C tek in rs pro
 Servo savo 1257x
 Reciever spektrum
 Batteries ip 5200
 Motor 7.5 sp 2.0
 Spur 83 | Pinion 23
 Ext Gears 34/22
 33/23
 32/24

Wheels and Tyres

Rear Wheels rev lite
 Rear Tyre pro line hole shot m3
 Rear Insert pro line molded
 Front Wheels rev lite
 Front Tyre aka rebar soft
 Front Insert aka 4wd front

Differential Height

High Low

Topdeck

Stiff Medium Soft

Rear Shocks

Oil sch 35 | Spring 1.6
 Ball Short
 Socket Long
 Piston Holes 2 3 4 5 6



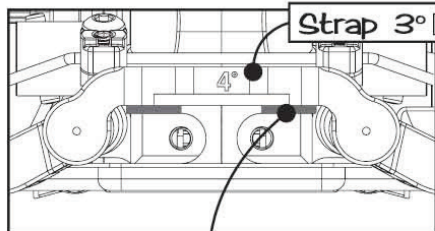
Front Shocks

Oil sch 40 | Spring 4.0
 Piston Holes 2 3 4 5 6



Rear Suspension

Anti roll bar No 1.20 1.40 1.60

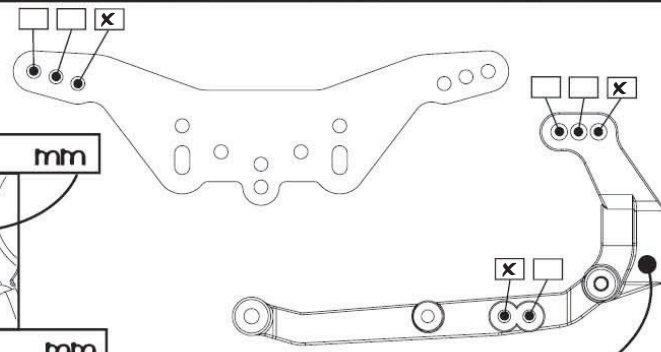


Strap 3° 4° 5°

Link Washers 0 mm

Antisquat Washers 0 mm

Link Washers 4 mm



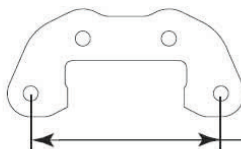
Rear Hub Carrier Alloy Std

Alloy Hub Carrier +1° -1°

Shock Postion Front Rear

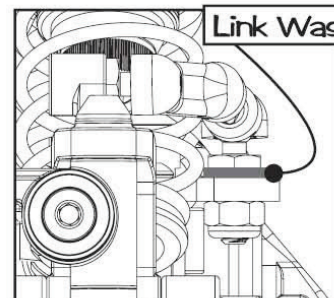
Wheelbase Short Med Long

Rear Camber at Ride Height 1 deg

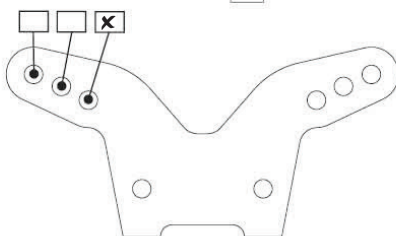


49 44 39 34

Front Suspension



Link Washers 1 mm

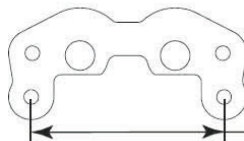


Yoke 0° 5°

Hub Carrier High Low

Front Camber at Ride Height 1 deg

Front Toe In 0



50.5 45.5 40.5