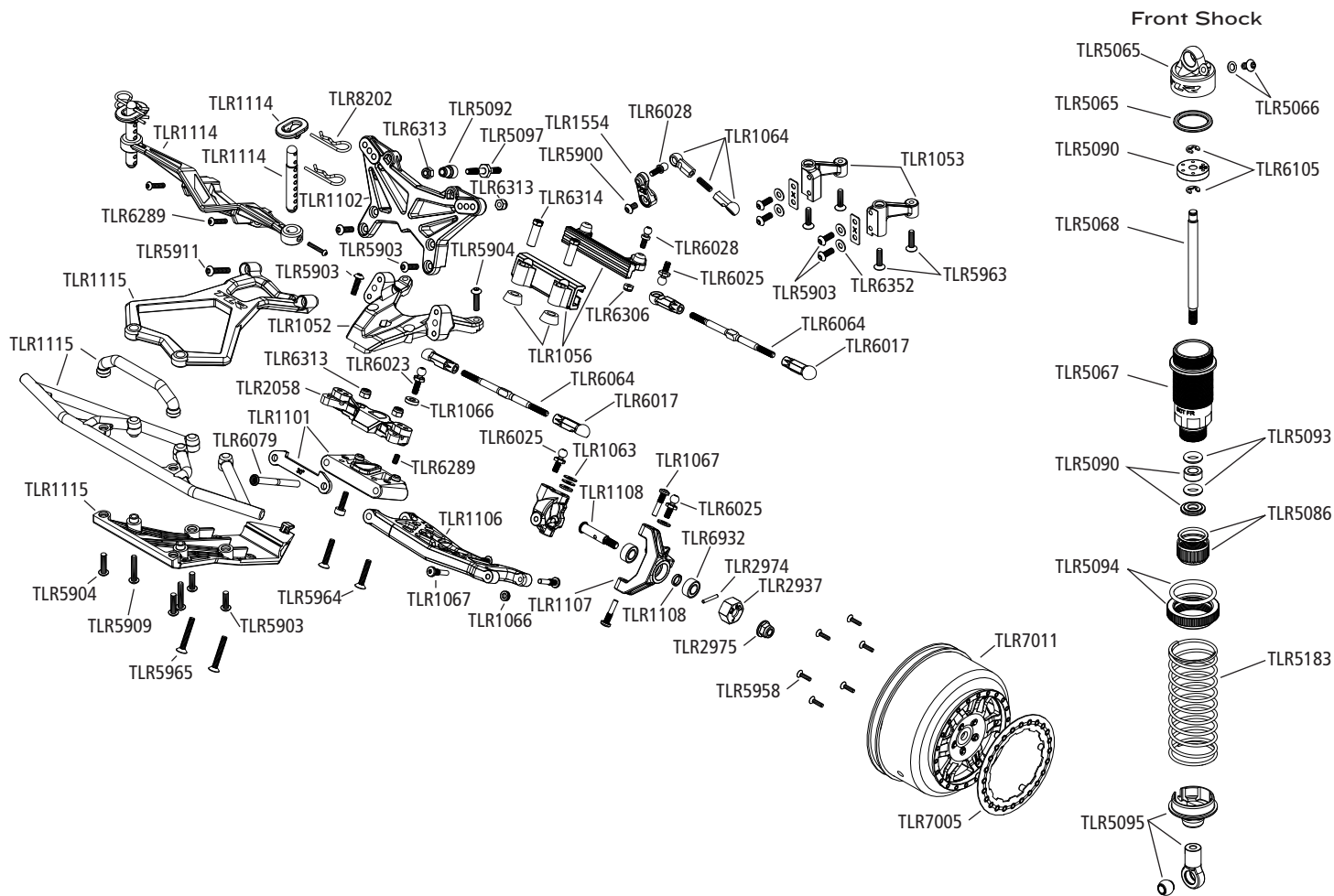


RRSCT TWENTYTWO

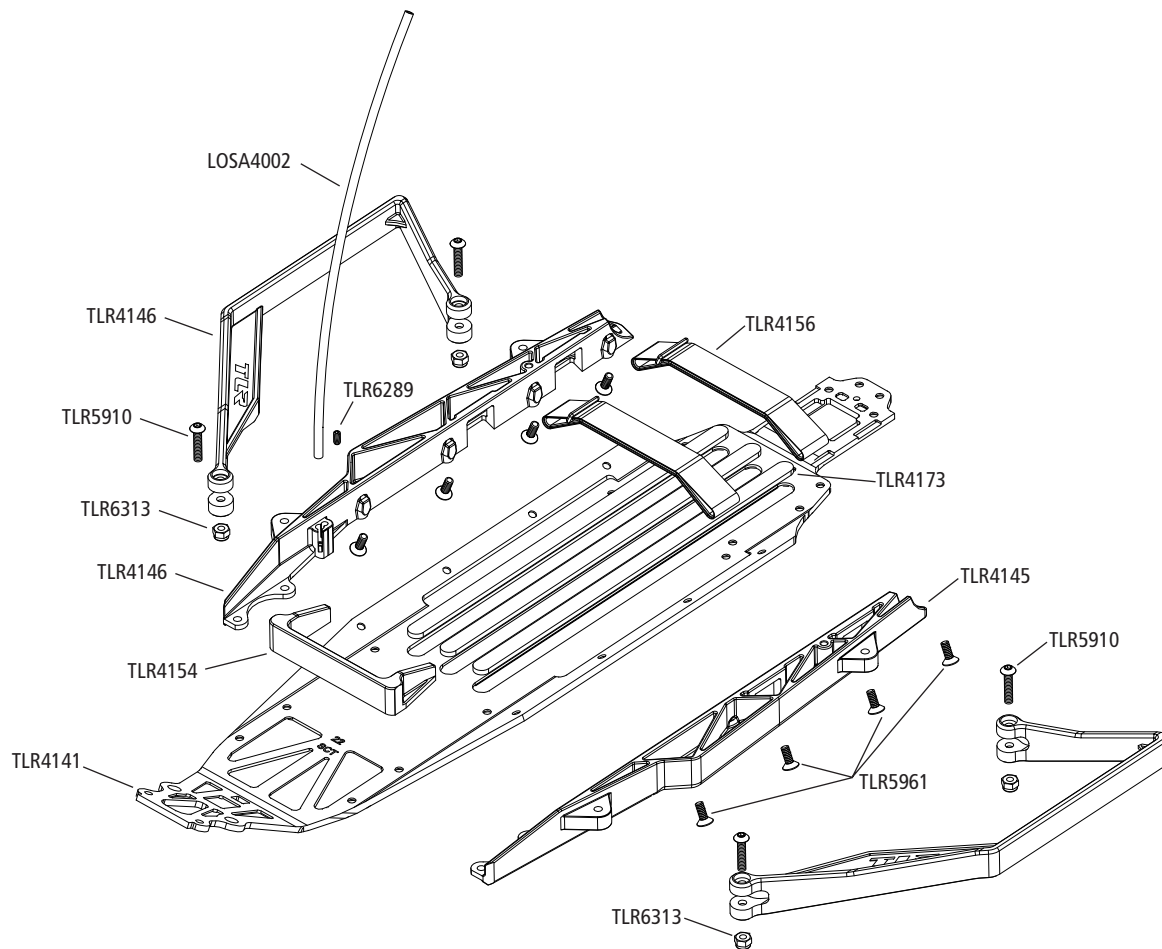


(R)evolution | EVOLUTION MEETS REVOLUTION

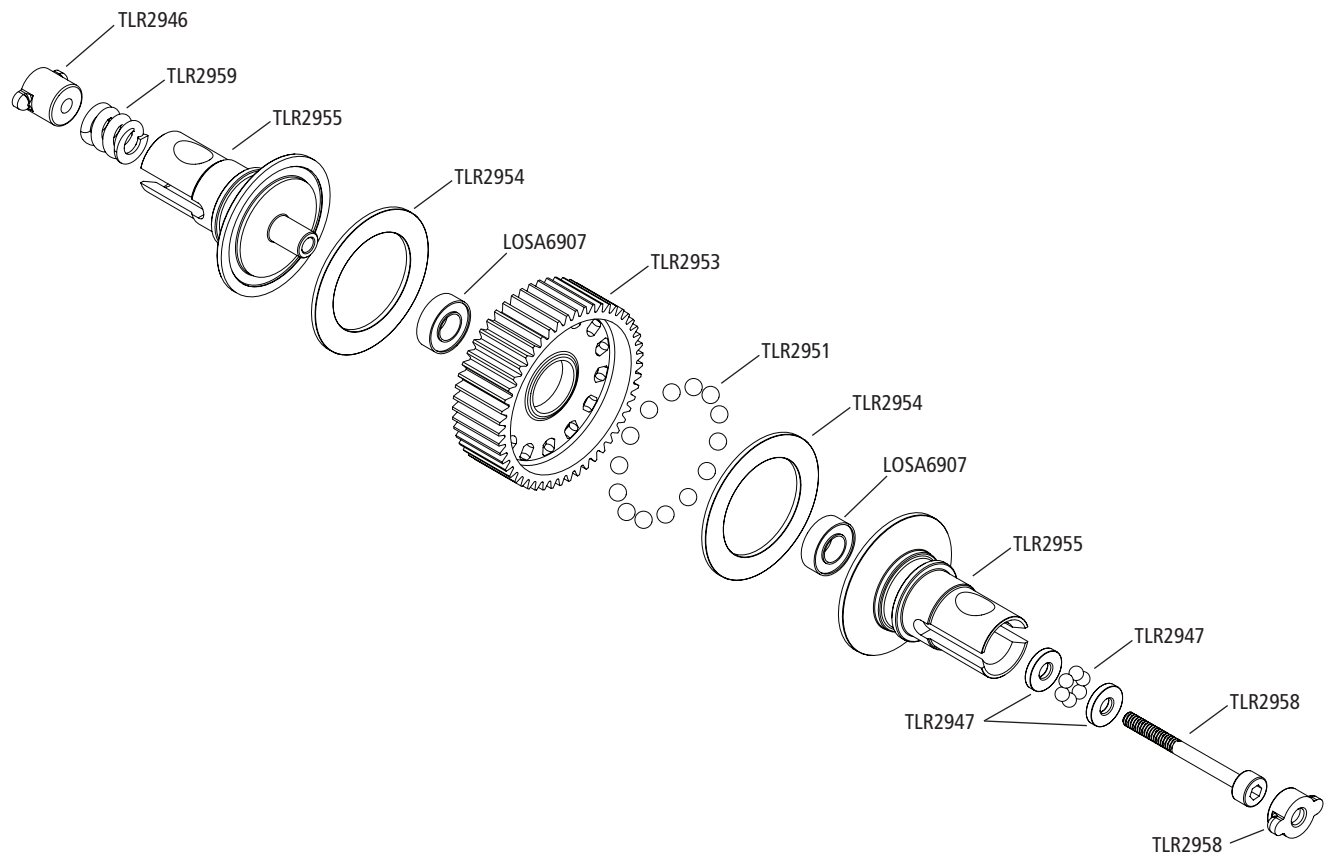
Part #	English	Deutsch	Français	Italiano	Español
LOSA3123	Slipper Friction Pad	Gleitbremsbelag	Patin d'embrayage à friction	Pastiglia pattino	Zapatas de fricción del slipper
LOSA4002	Antenna Kit	Antennenbausatz	Kit d'antenne	Kit dell'antenna	Kit de antena
LOSA6306	4-40 Aluminum Mini-Nuts (10)	4-40 Mminuttern, Aluminium (10)	Ecrous freins 4-40 Aluminium (10)	4-40 Mini dai in alluminio (10)	Mini tuercas de aluminio 4-40 (10)
LOSA6907	5x8mm Ball Bearings (2)	Kugellager 5 x 8 mm (2)	Roulements à billes 5x8 mm (2)	5x8mm Cuscinetti a sfera (2)	Rodamientos 5x8mm (2)
LOSA6937	5x10mm Ball Bearings (2)	Kugellager 5 x 10 mm (2)	Roulements à billes 5x10 mm (2)	5x10mm Cuscinetti a sfera (2)	Rodamientos 5x10mm (2)
LOSA6943	10x15mm Ball Bearings (2)	Kugellager 10 x 15 mm (2)	Roulements à billes 10x15 mm (2)	10x15mm Cuscinetti a sfera (2)	Rodamientos 10x15mm (2)
LOSA6955	5 x 13mm Ball Bearings (2)	Kugellager 5 x 13 mm (2)	Roulements à billes 5 x 13 mm (2)	5 x 13mm Cuscinetti a sfera (2)	Rodamiento 5x13mm (2)
TLRI052	Front Bulkhead, 22	Vordere Spritzwand, 22	Cloison AV, 22	Paratia anteriore, 22	Tabica delantera. 22
TLRI053	Front Servo Mount/Chassis Brace, 22	Vordere Hilfsbefestigung/Fahrgestellklammer, 22	Support de servo/renfort de châssis AV, 22	Montaggio anteriore / staffa chassis, 22	Protectores laterals del chasis y placa delantera, 22
TLRI056	Steering Rack/Rack Housing & Spacers, 22	Zahnstange/Lenkgehäuse u. Abstandhalter, 22	Paliers de direction/logement de paliers & rondelles, 22	Rack di sterzata /Rack alloggiamento & distanziatori, 22	Cremallera de dirección/ Soporte y espaciadores, 22
TLRI057	Caster Block, 10°, 22	Lenkrollensperre, 10°, 22	Block de chasse, 10°, 22	Blocco ruote, 10°, 22	Mangueta, 10°, 22
TLRI063	Spindle/Caster Block Shim set	Achsschenkel-/Lenkrollensperren-Scheibensatz	Jeu de cales de fusée/blocks de chasse	Set alberino / Distanziatore blocco ruote	Kit de arandelas de cáster para las manguetas
TLRI064	Plastic Ball Cup, Short, 30 Degree	Kunststoffkugelpfanne, kurz, 30 Grad	Coupelle de rotule plastique, courte, 30 degrés	Copertura in plastica, corta, 30 gradi	Bolas de plástico, Cortas, 30 Grados
TLRI065	Front and Rear Hinge Pin Brace, 22	Gelenkbolzenanker, vorne und hinten, 22	Renfort de fusée AV et AR, 22	Staffe del cardine anteriori e posteriori, 22	Placa soporte pasadores delanteros y traseros, 22
TLRI066	Ball Stud/Hub Spacer Set, 22	Kugelgelenkbolzen-/Nabenabstandhaltersatz, 22	Jeu de goujon à rotule/rondelle de fusée, 22	Perno della sfera / Set distanziatore, 22	Bolas/Espaciadores, 22



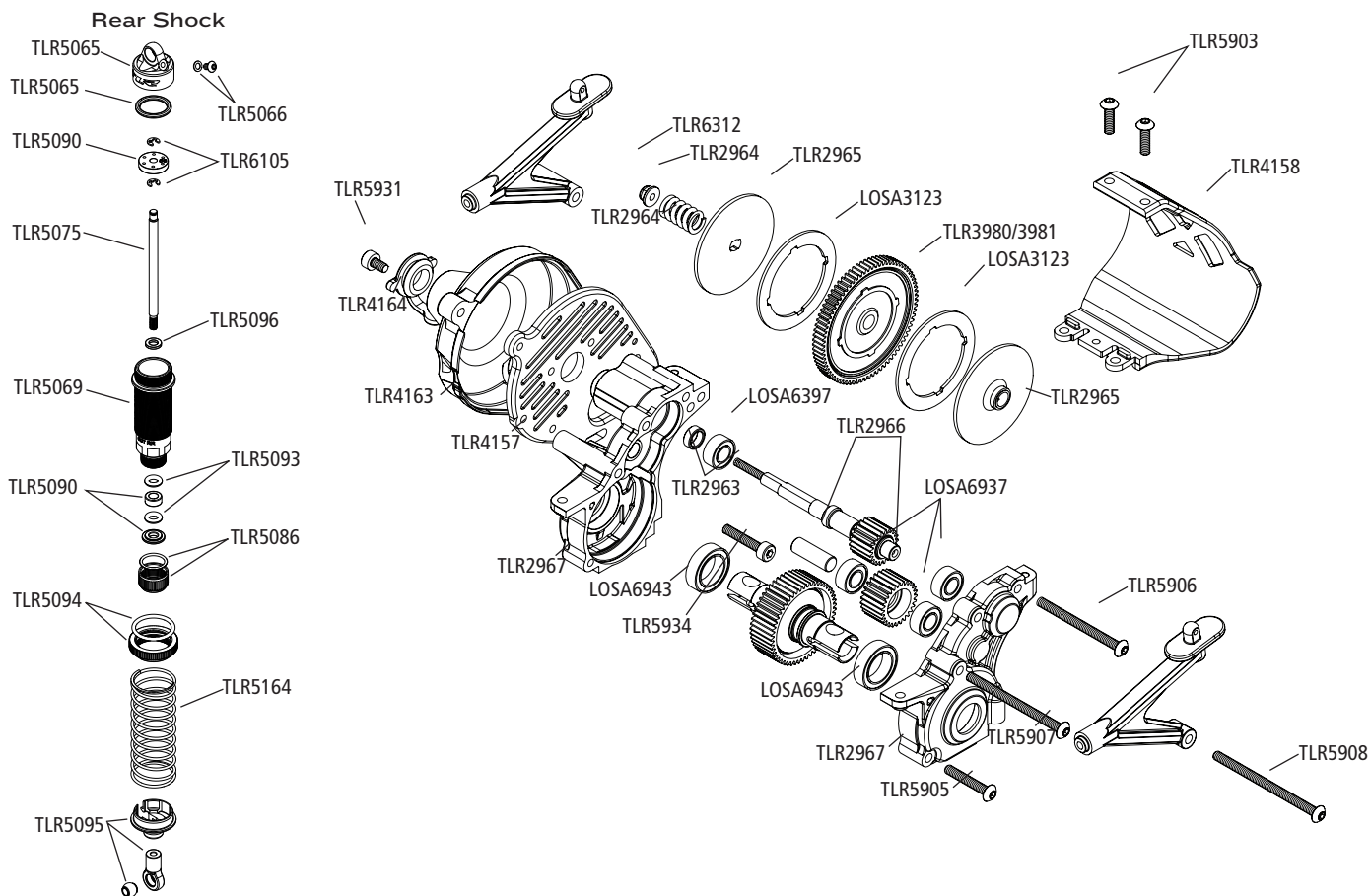
Part #	English	Deutsch	Français	Italiano	Español
TLR1067	King Pin Screw, 22 (8)	Achsschenkelbolzenschraube, 22 (8)	Vis de broche de fusée, 22 (8)	Vite King pin, 22 (8)	Tornillo de King Pin, 22 (8)
TLR1101	Front Pivot & Brace, 30 Degree, 22T & 22	Querlenkerhalter vorne 30° 22T & 22	Axe avant et renfort, 30°, 22T, 22	Perno e supporto anteriore, 30 gradi, 22T & 22	Placa y soporte trapecios delanteros 30°, 22T y 22
TLR1106	Front Arm Set: 22SCT	Querlenker Set vorne: 22 SCT	Set de bras de suspension avant : 22SCT	Set bracci anteriori: 22SCT	Trapecios delanteros: 22SCT
TLR1107	Spindle Set, 4mm Trail: 22B, SCT	Achschenkel 4mm: 22B, SCT	Set de fusées 4mm : 22B, SCT	Set perni, 4 mm Pista: 22B, SCT	Manguetas desplazadas 4mm: 22B, SCT
TLR1108	Front Axles (2) : 22SCT	Radachsen vorne (2) : 22SCT	Axes de roues avant (2) : 22SCT	Assali anteriori (2) : 22SCT	Ejes de rueda delanteros (2) : 22SCT
TLR1114	Body Mount Set: 22SCT	Karosseriebefestigung: 22SCT	Set de fixations de carrosserie : 22SCT	Set supporto carrozzeria: 22SCT	Soporte de carrocería: 22SCT
TLR1115	Front Bumper Set: 22SCT	Stoßfänger Set: 22SCT	Set de parechoc avant : 22SCT	Set paraurti anteriore: 22SCT	Parachoques delantero: 22SCT
TLR1554	Servo Horn Set, Steering, 22	Servohupensatz, Lenkung, 22	Jeu de bras de servo, direction, 22	Set Servo Horn, sterzo, 22	Kit brazos de servo, Dirección, 22
TLR2044	Anti-Squat Tuning Set, LRC, 22	Anti-Squat-Tuningsatz, LRC, 22	Jeu d'optimisation d'anticabrage, LRC, 22	Set impostazione anti-squat, LRC, 22	Kit de ajuste de Anti-squat, LRC, 22
TLR2046	Plastic Nut, Rear Inner Hinge Pin Brace, 22	Kunststoffmutter, Gelenkbolzenanker hinten innen, 22	Écrou plastique, pivot AR intérieur, 22	Dado in plastica, staffa del cardine interna posteriore, 22	Tuerca de plástico, soporte de pasador interior trasero, 22
TLR2048	Pivot Ball, Rear Inner Hinge Pin, 22	Kugelfassung, Gelenkbolzen hinten innen, 22	Bille pivot, pivot AR intérieur, 22	Sfera del perno, perno del cardine interno posteriore, 22	Pivot Ball, pasador interior trasero, 22
TLR2051	Front & Rear Camber Block Kit, 22	Spurklotzsetz vorne u. hinten, 22	Kit de blocage de cambrure AV & AR, 22	Kit bloccaggio camber anteriore & posteriore, 22	Kit de bloques de camber delantero y trasero, 22
TLR2052	Rear Hub & Hex, 22 (2)	Hintere Nabe u. Sechskant, 22 (2)	Fusée & vis hex AR, 22 (2)	Mozzo posteriore & dado, 22 (2)	Mangueta trasera & Hexágono, 22 (2)
TLR2054	Rear Outer Hinge pin, 22 (2)	Gelenkbolzen hinten außen, 22 (2)	Broche d'axe extérieur AR, 22 (2)	Perno esterno per cardini, 22 (2)	Pasador trasero exterior, 22 (2)



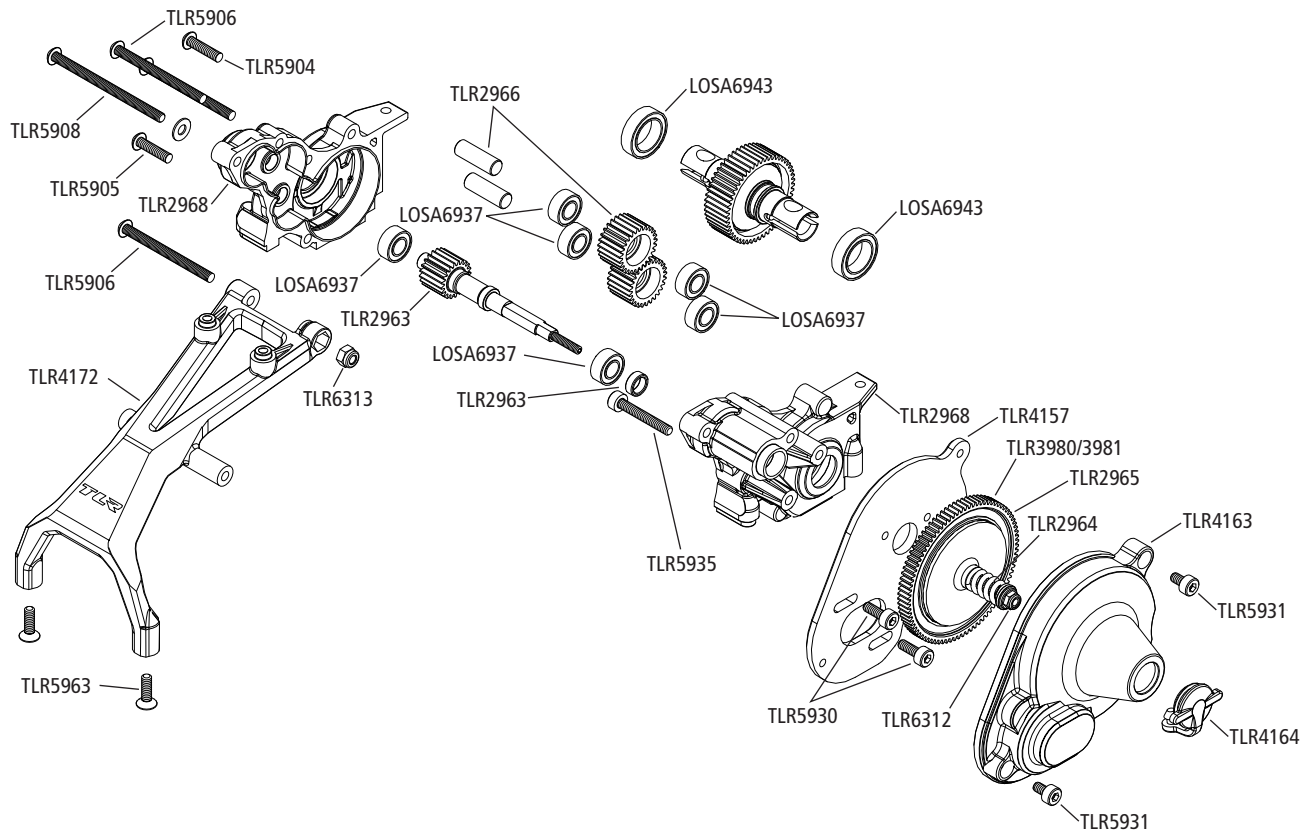
Part #	English	Deutsch	Français	Italiano	Español
TLR2055	Rear Inner Hinge pin, 22 (2)	Gelenkbolzen hinten innen, 22 (2)	Broche d'axe intérieur AR, 22 (2)	Perno interno per cardini, 22 (2)	Pasador trasero interior, 22 (2)
TLR2101	Rear Shock Tower, Rear Motor, 22T	Hinterer Dämpferdom, Heckmotor, 22T	Support d'amortisseur AR, moteur AR, 22T	Torre ammortizzatore posteriore, motore posteriore, 22T	Torreta trasera, Motor trasero, 22T
TLR2102	Rear Shock Tower, Mid Motor, 22T	Hinterer Dämpferdom, Mittelmotor, 22T	Support d'amortisseur AR, moteur Centre, 22T	Torre ammortizzatore posteriore, motore mediano, 22T	Torreta trasera, Motor central, 22T
TLR2103	Rear Arm Set: 22SCT	Querlenker hinten: (2) :22SCT	Set de bras de suspension arrière : 22SCT	Set bracci posteriori: 22SCT	Trapezios traseros: 22SCT
TLR2923	Rear Axles (2): 22SCT	Radachsen hinten (2) :22SCT	Axes de roues arrière (2) : 22SCT	Assali posteriori (2): 22SCT	Ejes de rueda traseros (2): 22SCT
TLR2924	Driveshafts (2): 22SCT	Antriebswellen (2) :22SCT	Tiges de cardans (2) : 22SCT	Semiassi (2): 22SCT	Cárdan (2): 22SCT
TLR2925	Driveshaft Set, Complete: 22SCT	Antriebswellen Set :kpl. 22SCT	Set de cardan complet : 22SCT	Set completo semiassi: 22SCT	Cárdan completo: 22SCT
TLR2937	Fr/R Wheel Hex: 22SCT	Radmitnehmer Vorne/ Hinten:22SCT	Hexagones de roues av/arr : 22SCT	Esagoni ruote F/R: 22SCT	Hexágono de rueda Delantero/Trasero: 22SCT
TLR2946	Diff Nut, Gen II, 22	Mutterhalter f. Diff-einstellung	Noix de diff, Gen II, 22	Dado Diff, Gen II, 22	Tuerca de diferencial, Gen II, 22
TLR2947	Tungsten Carbide Thrust Balls, 2mm (6)	Wolfram Carbid Differentialkugeln 2mm (6)	Billes de butée en Carbure de Tungstène, 2mm (6)	Sfere di spinta Tungsten Carbide, 2mm (6)	Bolas de tungsteno para rodamiento axial, 2mm (6)
TLR2951	Tungsten Carbide Diff Balls, 3/32 (14)	Wolfram Carbid Differentialkugeln 3/32 (14)	Billes de différentiel en Carbure de Tungstène, 3/32 (14)	Sfere Diff Tungsten Carbide, 3/32 (14)	Bolas de tungsteno para diferencial 3/32 (14)
TLR2952	Silicone Diff Grease, 8cc, 22	Silikon Differenzial Schmierfett, 8cc, 22	Graisse de différentiel silicone, 8cc, 22	Grasso silicone differenziale, 8cc, 22	Grasa de silicón diferencial, 8cc, 22
TLR2953	Diff Gear, 5IT, 22	Differenzial, 5IT, 22	Couronne de différentiel, 5I dents, 22	Ingranaggio differenziale, 5IT, 22	Corona de diferencial, 5IT, 22



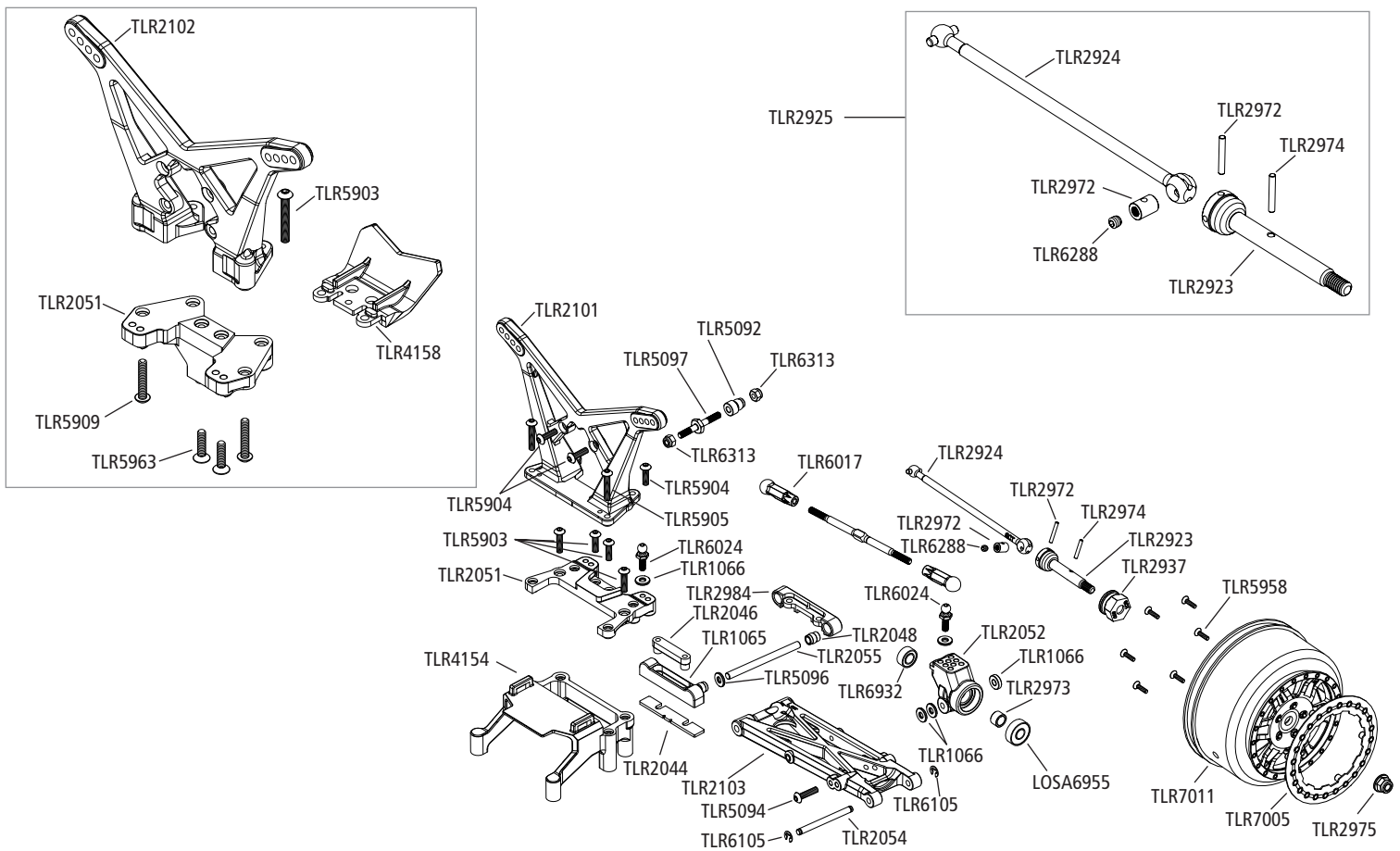
Part #	English	Deutsch	Français	Italiano	Español
TLR2954	Drive Rings, 22 (2)	Antriebsringe, 22 (2)	Couronne de transmission, 22 (2)	Anelli della trasmissione, 22 (2)	Pistas de diferencial, 22 (2)
TLR2955	Outdrive Set, 22	Abtriebssatz, 22	Jeu de cardan, (22)	Set bicchierini, 22	Vasos de diferencial, 22
TLR2956	Diff Ball Set, Hard (14)	Differenzial-Kugelsatz, hart (14)	Jeu de billes de différentiel, dur (14)	Set sfera differenziale, rigida (14)	Bolas de diferencial, Duras (14)
TLR2958	Diff Through Screw and Nut, 22	Durchgangsschraube u. -mutter, Differenzial, 22	Vis et écrou traversant de différentiel, 22	Vite passante e dado diff., 22	Tornillo pasante y tuerca del diferencial, 22
TLR2959	Diff Spring, 22 (1)	Differenzialfeder, 22 (1)	Ressort de différentiel, 22 (1)	Molla differenziale, 22 (1)	Muelle del diferencial, 22 (1)
TLR2962	Diff Service Kit, 22	Wartungssatz, Differenzial, 22	Kit d'entretien de différentiel, 22	Kit servizio diff., 22	Kit de reparación del diferencial, 22
TLR2963	Layshaft & Spacer, 22	Zwischenwelle u. Abstandhalter, 22	Arbre secondaire & entretoise, 22	Supporto & distanziatore, 22	Eje transmisión & Espaciador, 22
TLR2964	Slipper Spring, 22	Gleitfeder, 22	Ressort d'ensemble patinant, 22	Anello di scorrimento, 22	Muelle del slipper, 22
TLR2965	Slipper Plates, 22, all XXX (2)	Gleitbleche, 22, alle XXX (2)	Plateaux d'embrayage patinant, 22, tous XXX (2)	Piastre di scorrimento, 22, tutte XXX (2)	Placas del slipper, 22, Todos XXX (2)
TLR2966	Idle Gear & Shaft, 22 (2)	Zwischenrad u. -welle, 22 (2)	Pignon « fou » & arbre, 22 (2)	Ingranaggi & albero, 22 (2)	Piñón intermedio & Eje, 22 (2)
TLR2967	Gear Case, Rear Engine, 22	Getriebegehäuse, Heckmotor, 22	Carter de pignons, moteur AR, 22	Alloggiamento ingranaggi, motore posteriore, 22	Caja de transmisión, Motor trasero, 22
TLR2968	Gear Case, Mid Engine, 22	Getriebegehäuse, Mittelmotor, 22	Carter de pignons, moteur Centre, 22	Alloggiamento ingranaggi, motore centrale, 22	Caja de transmisión, Motor central, 22
TLR2972	Driveshaft Rebuild Kit, 22	Antriebswellen-Umbausatz, 22	Kit de reconstitution d'arbre de transmission, 22	Kit ricostruzione trasmissione, 22	Kit reparación de cárdan, 22
TLR2973	Rear Axle Spacer Set, 22	Abstandhaltersatz, Hinterachse, 22	Jeu de rondelles d'axe AR, 22	Set distanziatore assale posteriore, 22	Espaciadores para ejes traseros, 22
TLR2974	Drive Pin Set, 22	Mitnehmerstiftsatz, 22	Jeu d'axes d'entraînement, 22	Set perno trasmissione, 22	Kit de pins, 22
TLR2975	Rear Wheel Nut, 22, M4 (6)	Radmutter hinten, 22, M4 (6)	Écrou de roue AR, 22 M4 (6)	Dado ruota posteriore 22, M4 (6)	Tuerca trasera, 22, M4 (6)
TLR2984	Aluminum, Toe Plate, 3°, LRC, 22	Aluminumtritleiste, 3°, LRC, 22	Plaque de pincement aluminium, 3°, LRC, 22	Alluminio, piastra convergenza, 3°, LRC, 22	Placa de convergencia aluminio, 3°, LRC, 22



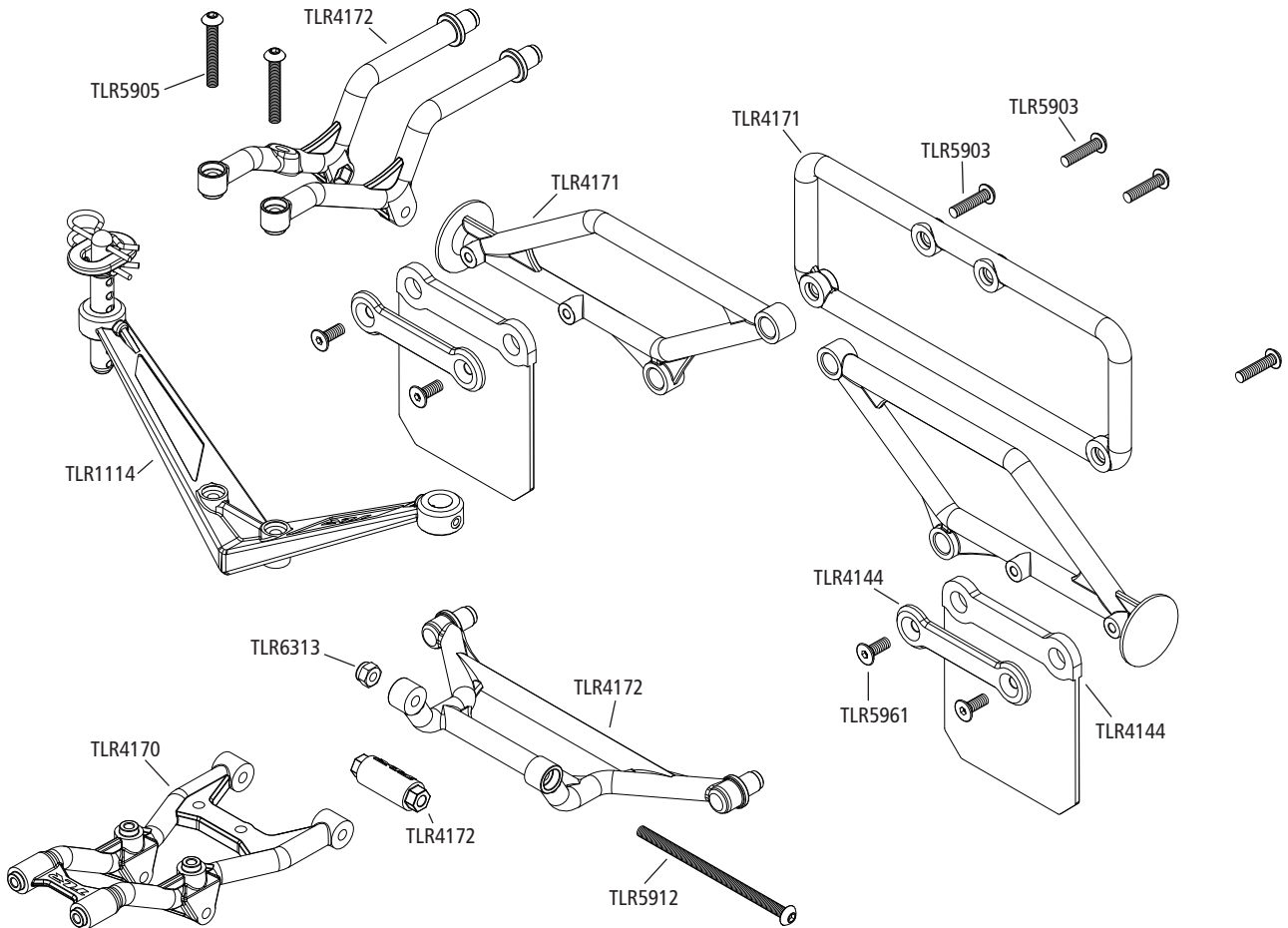
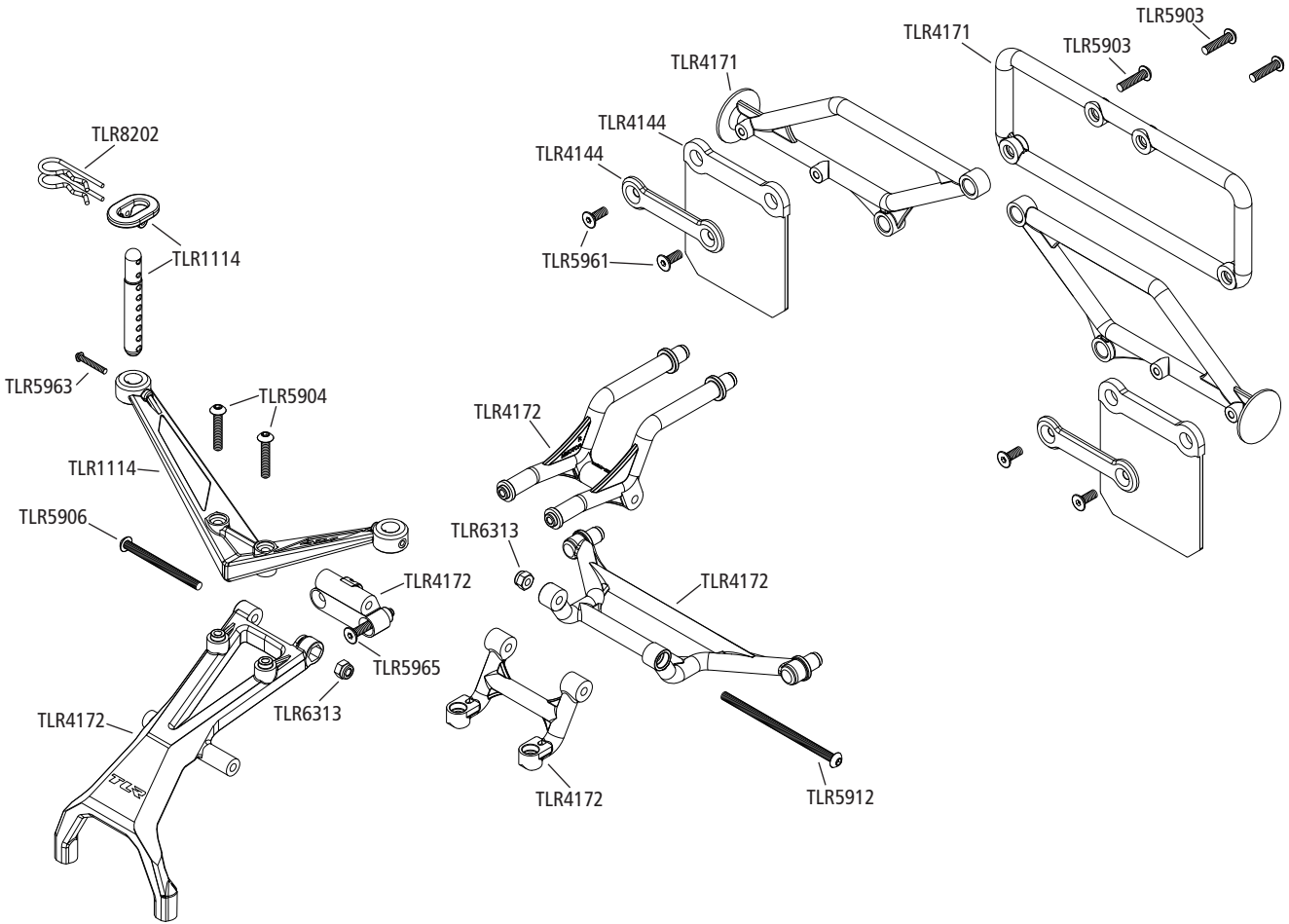
Part #	English	Deutsch	Français	Italiano	Español
TLR3980	78T Spur Gear, 22	78T Stirnradgetriebe, 22	Couronne 78 dents, 22	78T ruota dentata, 22	Corona 78T, 22
TLR3981	86T Spur Gear, 22	86T Stirnradgetriebe, 22	Couronne 86 dents, 22	86T ruota dentata, 22	Corona 86T, 22
TLR4141	Chassis: 22SCT	Chassis: 22SCT	Châssis : 22SCT	Telaio: 22SCT	Chasis: 22SCT
TLR4144	Mud Flaps & Straps: 22SCT	Schmutzfänger: 22SCT	Bavettes et fixations : 22SCT	Alette parafanghi e fascette: 22SCT	Guardabarros: 22SCT
TLR4145	Mud Guard Set: 22SCT	Spritzschutzset: 22SCT	Set de garde boue : 22SCT	Set parafanghi: 22SCT	Guardabarros trapecidos: 22SCT
TLR4146	Sideguards: 22SCT	Seitenschutz:22SCT	Protections latérales : 22SCT	Protezioni laterali: 22SCT	Protectores laterales: 22SCT
TLR4154	Battery Trays, 22	Batterieträger, 22	Brides de batterie, 22	Vassoio batteria, 22	Bandejas de baterías, 22
TLR4155	Battery Straps, Hook & Loop, 22 (2)	Gurte, Haken u. Öse, Batterie, 22 (2)	Brides de batterie, brides de fixation, 22 (2)	Fascette batteria, ganci & fasce, 22 (2):	Soportes de las baterías, 22 (2)
TLR4156	Chassis Foam Set	Schaumstoffsatz, Fahrgestell	Jeu de mousse pour châssis	Set schiuma chassis	Kit de Foam del chasis
TLR4157	Motor Plate, 22	Motorschild, 22	Plaque de support moteur, 22	Piastra motore, 22	Bancada motor, 22
TLR4158	Motor Guard & Rear Bumper, 22	Motorabdeckung u. Stoßstange hinten, 22	Protection moteur & pare-chocs AR, 22	Protezione motore & paraurti posteriore, 22	Protector de motor & Parachoques, 22
TLR4163	Gear Cover & Plug, 22	Getriebeabdeckung u. Stopfen, 22	Carter de pignon et bouchon, 22	Coperchio e tappo ingranaggi, 22	Cubierta de transmisión & Tapa, 22
TLR4164	Gear Cover Plug, 22 (2)	Getriebeabdeckungsstopfen, 22 (2)	Bouchon de carter de pignon, 22 (2)	Tappo copertura ingranaggi, 22 (2)	Tapa de cubierta de transmisión 22 (2)
TLR4170	R Bumper Set, Rear Motor: 22SCT	Stoßfänger Set Heckmotor: 22SCTer Set, Rear Motor: 22SCT	Set de parechoc arrière : 22SCT	Set paraurti posteriore, Motore posteriore: 22SCT	Parachoques trasero: Motor trasero: 22SCTSet, Rear Motor: 22SCT
TLR4171	Sub Bumper Set: 22SCT	Zusatzstoßfänger Set: 22SCT	Pare choc inférieur : 22SCT	Set sub paraurti: 22SCT	Parachoques inferior: 22SCT
TLR5065	Bleeder Shock Cap Set (2) : 22	Stoßdämpferkappen Set (2):22	Set de bouchons d'amortisseurs à purge (2) : 22	Set valvola di sfianto ammortizzatore (2) : 22SCT	Tapas de amortiguador (2): 22
TLR5066	BleederShockCapScrews/Washer:22	Schrauben / Unterlegscheiben f. Stoßdämpferkappen	Vis/rondelles de bouchon d'amortisseur à purge : 22	Viti e rondelle valvola di sfianto ammortizzatore: 22	Tornillos y arandelas de la tapa de amortiguador: 22

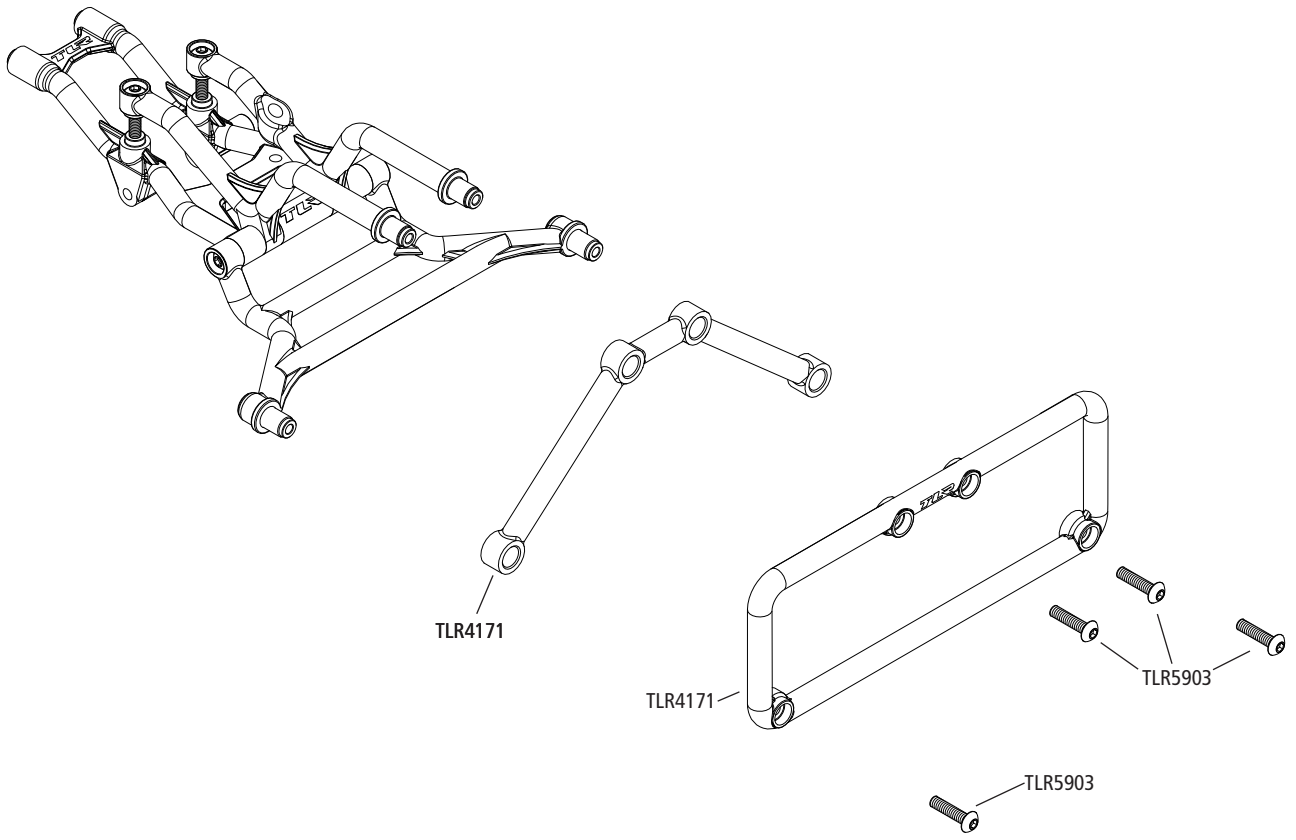


Part #	English	Deutsch	Français	Italiano	Español
TLR5067	Front Shock Body Set (2): 22SCT	Dämpfergehäuse Vorne Set (2): 22SCT	Corps d'amortisseur avant (2) : 22SCT	Set corpo ammortizzatore anteriore (2): 22SCT	Cuerpo amortiguador delantero (2): 22SCT
TLR5068	Fr Shock Shaft, TiNi (2): 22SCT	Kolbenstange TiNi (2): 22SCT	Tige d'amortisseur avant, Ti-Ni (2) : 22SCT	Albero ammortizzatore anteriore, TiNi (2): 22SCT	Vástago delantero TiNi (2): 22SCT
TLR5069	Rear Shock Body Set (2): 22SCT	Dämpfergehäuse hinten Set (2): 22SCT	Corps d'amortisseur arrière (2) : 22SCT	Set corpo ammortizzatore posteriore (2): 22SCT	Cuerpo amortiguador trasero (2): 22SCT
TLR5077	Shock Tool Kit, 12mm Shock	Dämpferwerkzeugsatz, 12-mm-Dämpfer	Kit d'outils pour amortisseur, amortisseur 12 mm	Kit utensili ammortizzatori, ammortizzatore da 12mm	Herramienta de amortiguadores, 12mm
TLR5086	Shock Cap, Bottom, 22 (2)	Dämpferdeckel unten, 22 (2)	Obturbateur d'amortisseur, bas, 22 (2)	Cappuccio ammortizzatore, inferiore 22 (2)	Tapa amortiguador, inferior, 22 (2)
TLR5089	Bladder Set, 12mm Shocks, 22 (4)	Blasensatz, 12-mm-Dämpfer, 22 (4)	Jeu de soufflets, amortisseurs 12 mm, 22 (4)	Set camera d'aria, ammortizzatori 12mm , 22 (4)	Membranas, Amortiguadores 12mm, 22 (4)
TLR5090	Piston Set and Bushings, 12mm Shock, 22	Kolbensatz und Buchsen, 12-mm-Dämpfer, 22	Jeu et bagues de pistons, amortisseurs 12 mm, 22	Set pistone boccola, ammortizzatori 12mm, 22	Pistones y casquillos, Amortiguador 12mm, 22
TLR5092	Upper Shock Bushing, 22 (4)	Obere Dämpferbuchse, 22 (4)	Bague supérieure d'amortisseur, 22 (4)	Boccola ammortizzatore superiore, 22 (4)	Casquillo superior de amortiguadores, 22 (4)
TLR5093	Shock Shaft O-ring Set, 22	O-Ringsatz, Dämpferwelle, 22	Jeu de joints toriques de tige d'amortisseur, 22	Set o-ring albero ammortizzatore, 22	Tóricas de amortiguador, 22
TLR5094	Shock Preload Adjuster Nut with O-rings	Einstellmutter, Dämpfervorspannung, mit O-Ringen	Écrou de réglage de précontrainte d'amortisseur avec joints toriques	Dado di regolazione carica ammortizzatore con O-ring	Tuerca de precarga de amortiguador con tóricas
TLR5095	Shock End Set with Spring Cups, 12mm Shock, 22	Dämpferendstücksatz mit Federtellern, 12-mm-Dämpfer, 22	Jeu d'extrémités d'amortisseurs avec coupelles de ressort, amortisseur 12 mm, 22	Set finecorsa ammortizzatore con coppe della molla, ammortizzatore da 12mm, 22	Rótulas de amortiguador con cazoleta, amortiguador 12mm, 22
TLR5096	Shock Limiter Set, 3.5mm Shaft, 22	Dämpferbegrenzungssatz, 3,5 mm, Welle, 22	Jeu de limiteurs d'amortisseur, tige de 3,5 mm, 22	Set limitatore ammortizzatore, 3.5mm albero, 22	Imitador de recorrido, eje 3.5mm, 22
TLR5097	Shock Standoff, 22	Dämpferabstandsbolzen, 22	Entretoise d'amortisseur, 22	Stallo ammortizzatore, 22	Sujeción superior amortiguador, 22
TLR5900	Button Head Screws, M3 x 5mm (10)	Halbrundkopfschrauben, M3 x 5 mm (10)	Vis à tête bouton, M3 x 5 mm (10)	Viti a testa bombata, M3 x 5mm (10)	Tornillo, M3 x 5mm (10)



Part #	English	Deutsch	Français	Italiano	Español
TLR5901	Button Head Screws, M3 x 6mm (10)	Halbrundkopfschrauben, M3 x 6 mm (10)	Vis à tête bouton, M3 x 6 mm (10)	Viti a testa bombata, M3 x 6mm (10)	Tornillo, M3 x 6mm (10)
TLR5902	Button Head Screws, M3 x 8mm (10)	Halbrundkopfschrauben, M3 x 8 mm (10)	Vis à tête bouton, M3 x 8 mm (10)	Viti a testa bombata, M3 x 8mm (10)	Tornillo, M3 x 8mm (10)
TLR5903	Button Head Screws, M3 x 10mm (10)	Halbrundkopfschrauben, M3 x 10 mm (10)	Vis à tête bouton, M3 x 10 mm (10)	Viti a testa bombata, M3 x 10mm (10)	TLR5903 Tornillo, M3 x 10mm (10)
TLR5904	Button Head Screws, M3 x 12mm (10)	Halbrundkopfschrauben, M3 x 12 mm (10)	Vis à tête bouton, M3 x 12 mm (10)	Viti a testa bombata, M3 x 12mm (10)	Tornillo, M3 x 12mm (10)
TLR5905	Button Head Screws, M3 x 18mm (10)	Halbrundkopfschrauben, M3 x 18 mm (10)	Vis à tête bouton, M3 x 18 mm (10)	Viti a testa bombata, M3 x 18mm (10)	Tornillo, M3 x 18mm (10)
TLR5906	Button Head Screws, M3 x 35mm (10)	Halbrundkopfschrauben, M3 x 35 mm (10)	Vis à tête bouton, M3 x 35 mm (10)	Viti a testa bombata, M3 x 35mm (10)	Tornillo, M3 x 35mm (10)
TLR5907	Button Head Screws, M3 x 40mm (4)	Halbrundkopfschrauben, M3 x 40 mm (4)	Vis à tête bouton, M3 x 40 mm (4)	Viti a testa bombata, M3 x 40mm (4)	Tornillo, M3 x 40mm (4)
TLR5908	Button Head Screws, M3 x 44mm (4)	Halbrundkopfschrauben, M3 x 44 mm (4)	Vis à tête bouton, M3 x 44 mm (4)	Viti a testa bombata, M3 x 44mm (4)	Tornillo, M3 x 44mm (4)
TLR5909	Button Head Screws, M3 x 16mm (10)	Halbrundkopfschrauben, M3 x 16 mm (4)	Vis à tête bouton, M3 x 16 mm (4)	Viti a testa bombata, M3 x 16mm (4)	Tornillo, M3 x 16mm (4)
TLR5910	Button Head Screws, M3 x 14mm (10)	Halbrundkopfschrauben, M3 x 14 mm (10)	Vis à tête bouton, M3 x 14 mm (10)	Viti a testa bombata, M3 x 14mm (10)	Tornillo, M3 x 14mm (10)
TLR5911	Button Head Screws, M3 x 20mm (10)	Halbrundkopfschrauben, M3 x 20 mm (10)	Vis à tête bouton, M3 x 20 mm (10)	Viti a testa bombata, M3 x 20mm (10)	Tornillo, M3 x 20mm (10)
TLR5912	Button Head Screws, M3 x 54mm (2)	Halbrundkopfschrauben, M3 x 54 mm (2)	Vis à tête bouton, M3 x 54 mm (2)	Viti a testa bombata, M3 x 54mm (2)	Tornillo, M3 x 54mm (2)
TLR5913	Button Head Screws, M2.5 x 12mm (10)	Halbrundkopfschrauben, M2.5 x 12mm (10)	Vis à tête bouton, M2.5 x 12mm (10)	Viti a testa bombata, M2.5 x 12mm (10)	Tornillo, M2.5 x 12mm (10)
TLR5914	Button Head Screws, M2 x 8mm (10)	Halbrundkopfschrauben, M2 x 8mm (10)	Vis à tête bouton, M2 x 8mm (10)	Viti a testa bombata, M2 x 8mm (10)	Tornillo, M2 x 8mm (10)
TLR5930	Cap Head Screws, M3 x 8mm (10)	Innensechskantschrauben, M3 x 8 mm (10)	Vis à tête creuse, M3 x 8 mm (10)	Viti a testa bombata, M3 x 8mm (10)	Tornillos C/Allen, M3 x 8mm (10)
TLR5931	Cap Head Screws, M3 x 5mm (10)	Innensechskantschrauben, M3 x 5 mm (10)	Vis à tête creuse, M3 x 5 mm (10)	Viti a testa bombata, M3 x 5mm (10)	Tornillos C/Allen, M3 x 5mm (10)





Part #	English	Deutsch	Français	Italiano	Español
TLR5934	Cap Head Screws, M3 x 16mm (10)	Innensechskantschrauben, M3 x 16 mm (10)	Vis à tête creuse, M3 x 16 mm (10)	Viti a testa bombata, M3 x 16mm (10)	Tornillos C/Allen, M3 x 16mm (10)
TLR5935	Cap Head Screws, M3 x 20mm (4)	Innensechskantschrauben, M3 x 20 mm (4)	Vis à tête creuse, M3 x 20 mm (4)	Viti a testa bombata, M3 x 20mm (4)	Tornillos C/Allen, M3 x 20mm (4)
TLR5958	Flathead Screw, M2 x 8mm, (10)	Flachkopfschrauben, M2 x 8mm, (10)	Vis à tête plate, M2 x 8mm, (10)	Viti a testa piatta, M2 x 8mm, (10)	Tornillos avellanados, M2 x 8mm, (10)
TLR5959	Flathead Screw, M2.5 x 16mm, (10)	Flachkopfschrauben, M2.5 x 16 mm (10)	Vis à tête plate, M2.5 x 16 mm (10)	Viti a testa piatta, M2.5 x 16mm (10)	Tornillos avellanados, M2.5 x 16mm (10)
TLR5960	Flathead Screws, M2 x 6mm (10)	Flachkopfschrauben, M2 x 6 mm (10)	Vis à tête plate, M2 x 6 mm (10)	Viti a testa piatta, M2 x 6mm (10)	Tornillos avellanados, M2 x 6mm (10)
TLR5961	Flathead Screws, M3 x 8mm (10)	Flachkopfschrauben, M3 x 8 mm (10)	Vis à tête plate, M3 x 8 mm (10)	Viti a testa piatta, M3 x 8mm (10)	Tornillos avellanados, M3 x 8mm (10)
TLR5962	Flathead Screws, M3 x 10mm (10)	Flachkopfschrauben, M3 x 10 mm (10)	Vis à tête plate, M3 x 10 mm (10)	Viti a testa piatta, M3 x 10mm (10)	Tornillos avellanados, M3 x 10mm (10)
TLR5963	Flathead Screw, M3 x 12mm (10)	Flachkopfschraube, M3 x 12 mm (10)	Vis à tête plate, M3 x 12 mm (10)	Viti a testa piatta, M3 x 12mm (10)	Tornillos avellanados, M3 x 12mm (10)
TLR5964	Flathead Screw, M3 x 16mm (10)	Flachkopfschraube, M3 x 16 mm (10)	Vis à tête plate, M3 x 16 mm (10)	Viti a testa piatta, M3 x 16mm (10)	Tornillos avellanados, M3 x 16mm (10)
TLR5965	Flathead Screw, M3 x 20mm (10)	Flachkopfschraube, M3 x 20 mm (10)	Vis à tête plate, M3 x 20mm (10)	Viti a testa piatta, M3 x 20mm (10)	Tornillos avellanados, M3 x 20mm (10)
TLR6017	RodEnd, 4mm Turnbuckle:22SCT	Kugelpfannen 4mm: 22SCT	Chape pour biellette 4mm : 22SCT	Terminale asta, tenditore 4 mm: 22SCT	Rótulas de 4mm: 22SCT
TLR6023	Ball Stud, 4.8mm, 10mm, 22 (4)	Kugelgelenkbolzen, 4,8 mm, 10 mm, 22 (4)	Goujon à rotule, 4,8 mm, 10 mm, 22 (4)	Perno della sfera, 4.8mm, 10mm, 22 (4)	Bolas, 4.8mm, 10mm, 22 (4)
TLR6024	Ball Stud, 4.8mm, 8mm, 22 (4)	Kugelgelenkbolzen, 4,8 mm, 8 mm, 22 (4)	Goujon à rotule, 4,8 mm, 8mm, 22 (4)	Perno della sfera, 4.8mm, 8mm, 22 (4)	Bolas, 4.8mm, 8mm, 22 (4)
TLR6025	Ball Stud, 4.8mm, 6mm, 22 (4)	Kugelgelenkbolzen, 4,8 mm, 6 mm, 22 (4)	Goujon à rotule, 4,8 mm, 6mm, 22 (4)	Perno della sfera, 4.8mm, 6mm, 22 (4)	Bolas, 4.8mm, 6mm, 22 (4)
TLR6028	Ball Stud, Short Neck, 5mm (2)	Kugelgelenkbolzen, kurzer Hals, 5 mm (2)	Goujon à rotule, cou court, 5 mm (2)	Perno della sfera, collo corto, 5mm (2)	Bolas, Cuello corto, 5mm (2)
TLR6063	Turnbuckle, HD, 60mm (2): 22SCT	Gewindestange, HD, 60mm (2): 22SCT	Biellette renforcée, 60mm (2) : 22SCT	Tenditore, HD, 60mm (2): 22SCT	Tirante HD 60mm (2): 22SCT
TLR6064	Turnbuckle, HD, 65mm (2): 22SCT	Gewindestange, HD, 65mm (2): 22SCT	Biellette renforcée, 65mm (2) : 22SCT	Tenditore, HD, 65mm (2): 22SCT	Tirante HD 65mm: 22SCT
TLR6065	Turnbuckle, HD, 70mm (2): 22SCT	Gewindestange, HD, 70mm (2): 22SCT	Biellette renforcée, 70mm (2) : 22SCT	Tenditore, HD, 70mm (2): 22SCT	Tirante HD 70mm: 22SCT
TLR6079	Hinge Pin Set, Front, Inner, 22 (2)	Gelenkbolzensatz vorne innen, 22 (2)	Jeu de broche d'axe, AV, intérieur, 22 (2)	Set perno cardine, anteriore, interno, 22 (2)	Pasadores, Delanteros, Interior, 22 (2)
TLR6105	E-Clips, 3mm Shaft (12)	E-Clips, 3-mm-Welle (12)	E-Clips, axe 3 mm (12)	E-Clips, 3mm albero (12)	E-Clips, 3mm (12)
TLR6288	Setscrew, M3 x 2.5mm (10)	Gewindestift, M3 x 2,5 mm (10)	Vis de réglage, M3 x 2,5 mm (10)	Vite di regolazione, M3 x 2,5mm (10)	Kit de tornillos, M3 x 2.5mm (10)
TLR6289	Setscrew, M3 x 5mm (10)	Gewindestift, M3 x 5 mm (10)	Vis de réglage, M3 x 5 mm (10)	Vite di regolazione, M3 x 5mm (10)	Kit tornillos, M3 x 5mm (10)
TLR6312	Locknut, M2.5 x .45 x 5mm (6)	Sicherungsmutter, M2,5 x 0,45 x 5 mm (6)	Écrou de blocage M2.5 x .45 x 5 mm (6)	Dado di fermo, M2.5 x 45 x 5mm (6)	Tuerca, M2.5 x .45 x 5mm (6)
TLR6313	Locknut, M3 x .5 x 5.5mm (10)	Sicherungsmutter, M3 x 0,5 x 5,5mm (10)	Écrou de blocage M3 x .5 x 5,5 mm (10)	Dado di fermo, M2.5 x 5 x 5,5mm (10)	Tuerca, M3 x .5 x 5.5mm (10)
TLR6314	Nut Insert, M3 x 14.5, 22 (2)	Gewindebuchse, M3 x 14,5, 22 (2)	Insert d'écrou, M3 x 14.5, 22 (2)	Inserto dado, M3 x 14.5, 22 (2)	Tuerca, M3 x 14.5, 22 (2)
TLR6352	Washers, M3 (10)	Unterlegscheiben, M3 (10)	Rondelles, M3 (10)	Rondelle, M3 (10)	Arandelas, M3 (10)
TLR6932	5x10x4mm HD Bearings (2)	5x10x4mm HD Kugellager (2)	Roulements 5x10x4mm (2)	Cuscinetti HD 5x10x4 mm (2)	Rodamientos HD 5x10x4 (2): 22SCT
TLR6933	Bearing Kit, 22	Lagersatz, 22	Kit de roulements, 22	Kit cuscinetto, 22	Kit de rodamientos, 22
TLR7004	Wheel (2): 22SCT	Räder Schwarz (2): 22SCT	Jantes, noires (2) : 22SCT	Ruota nera (2): 22SCT	Llanta negra (2): 22SCT
TLR7005	Beadlock Ring w/Screws (4):22SCT	Beadlock Ringe Gelb m Schrauben (4)	Anneaux Beadlock, jaunes avec vis (4) : 22SCT	Anello Beadlock, giallo c/viti (4): 22SCT	Aro Beadlock amarillo con tornillería (4):22SCT
TLR7006	Wheel Disks (4): 22SCT	Felgen, Gelb (4):22 SCT	Flasques de jantes, jaunes (4) : 22SCT	Dischi ruote, giallo c/viti (4): 22SCT	Discos de llanta amarillos (4): 22SCT
TLR8060	Body Set w/ Stickers: 22SCT	Karoserieset mit Sticker	Carrosserie avec planche de décoration : 22SCT	Set carrozzeria con adesivi: 22SCT	Carrocería con adhesivos: 22SCT

Part #	English	Deutsch	Français	Italiano	Español
TLR8201	Wing Washer (4): 22/T	Unterlegscheiben Flügel (4): 22T	Rondelles d'aileron (4): 22/T	Rondella (4): 22/T	Arandelas del alerón (4): 22/T
TLR8202	Body Clips, Black (12): 22/T	Body Clips, Schwarz (12): 22/T	Clips de carrosserie, noir (12) : 22/T	Clips per carrozzeria, Nere (12): 22/T	Clips carrocería, negros (12): 22/T
TLR8302	Sticker Sheet: 22 SCT	Sticker /Dekorbogen: 22SCT	Planche de décoration : 22SCT	Foglio adesivi: 22SCT	Adhesivos: 22SCT

Option Parts\Optionale Bauteile\Pièces optionnelles\Pezzi opzionali\Piezas Opcionales

Part #	English	Deutsch	Français	Italiano	Español
LOSA3954	Gear Differential, Complete: 22RTR	Getriebedifferential, Komplett: 22 RTR	Pignons de diff Complets : 22RTR	Ingranaggi differenziale, Completo: 22RTR	Diferencial de planetarios completo: 22RTR
LOSA3985	84T 48 Pitch Kevlar Spur Gear	84T 48 Pitch Kevlar Zahnrad	Couronne Kevlar 84T 48dp	84T 48 Ingranaggio Pitch Kevlar	Corona 84T 48 de Kevlar
LOSA5006	Upper & Lower Shock Caps: 22RTR	Stoßdämpferendkappen: 22RTR	Bouchons sup et inf d'amortisseurs : 22RTR	Tappi inferiore e superiore per ammortizzatore: 22RTR	Tapa superior e inferior de amortiguadores: 22RTR
LOSA99172	Camber Gauge	Sturzlehre	Jauge de carrossage	Misuratore di camber	Medidor de caídas
LOSA99173	Ride Height Gauge	Höhenmesser	Jauge de garde au sol	Misuratore di altezza	Medidor de altura
TLR0902	Support Kit: 22SCT	Support Kit: 22SCT	Kit de supports : 22SCT	Kit supporto: 22SCT	Kit de apoyo: 22SCT
TLRI043	Threaded Front King Pin, TiNitride, (2), 22	Achsschenkelgewindebolzen vorne, Ti-Nitrid, (2), 22	Axe de fusée AV fileté, TiNitride, 22 (2)	PernoKingfilettatoanteriore, Nitruro di titanio, (2), 22	KingPindelanterosca do, TiNitride, (2), 22
TLRI044	Aluminum Carrier, 0°, 22	Aluminumträger, 0°, 22	Porte-fusée aluminium, 0°, 22	Supporto in alluminio, 0°, 22	Portamanguetas de aluminio, 0°, 22
TLRI045	Aluminum Carrier, 3°, 22	Aluminumträger, 3°, 22	Porte-fusée aluminium, 3°, 22	Supporto in alluminio, 3°, 22	Portamanguetas de aluminio, 3°, 22
TLRI046	Aluminum Carrier, 5°, 22	Aluminumträger, 5°, 22	Porte-fusée aluminium, 5°, 22	Supporto in alluminio, 5°, 22	Portamanguetas de aluminio, 5°, 22
TLRI047	Aluminum Carrier, 10°, 22	Aluminumträger, 10°, 22	Porte-fusée aluminium, 10°, 22	Supporto in alluminio, 10°, 22	Portamanguetas de aluminio, 10°, 22
TLRI051	Front Pivot & Kick Shims, 22	Vordere Drehachse u. Rückstoßscheiben, 22	Pivot AV & cales de battement, 22	Cardine anteriore e & rondelle, 22	Arandelas de Kick y Roll center delanteras, 22
TLRI058	Caster Block, 5°, 22	Lenkrollensperre, 5°, 22	Block de chasse, 5°, 22	Blocco ruote, 5°, 22	Mangueta, 5°, 22
TLRI059	Caster Block, 3°, 22	Lenkrollensperre, 3°, 22	Block de chasse, 3°, 22	Blocco ruote, 3°, 22	Mangueta, 3°, 22
TLRI060	Caster Block, 0°, 22	Lenkrollensperre, 0°, 22	Block de chasse, 0°, 22	Blocco ruote, 0°, 22	Mangueta, 0°, 22
TLRI075	4mm Trailing Spindle, Alum: 22	4mm Radträger hinten	Fusée déportée 4mm, aluminium : 22	Fuso terminale 4 mm, alluminio: 22	Manguetas desplazadas 4mm, Aluminio: 22SCT
TLRII05	Aluminum Front Pivot, 30°, 22T	Vordere Aluminiumdrehachse, 30°, 22T	Pivot AV aluminium, 30°, 22T	Alluminio Front Pivot, 30°, 22T	Soporte pasadores delantero en aluminio, 30°, 22T
TLRI550	Servo Mounts, Aluminum: 22	Servohalter Aluminium: 22	Supports de servo, aluminium : 22	Supporto servo, alluminio: 22	Soportes del servo, aluminio: 22
TLRI555	Aluminum Servo Horn 23 Spline	Aluminiumservohupe 23 Schiebekeil	Bras de servo aluminium, cannelure 23,	Servo Horn alluminio linguetta da 23,	Brazo de servo de aluminio 23,
TLRI556	Aluminum Servo Horn 24 Spline	Aluminiumservohupe 24 Schiebekeil	Bras de servo aluminium, cannelure 24,	Servo Horn alluminio linguetta da 24	Brazo de servo de aluminio 24
TLRI557	Aluminum Servo Horn 25 Spline	Aluminiumservohupe 25 Schiebekeil	Bras de servo aluminium, cannelure 25,	Servo Horn alluminio linguetta da 25	Brazo de servo de aluminio 25
TLR2045	Anti-Squat Tuning Set, HRC, 22	Anti-Squat-Tuningsatz, HRC, 22	Jeu d'optimisation d'anticabrage, HRC, 22	Set impostazione anti-squat, HRC, 22	Kit de ajuste de Anti-squat, HRC, 22
TLR2056	Ti Nitride Hinge Pin, Rear Outer, Threaded (2), 22	Gelenkbolzen hinten außen, Ti-Nitrid, mit Gewinde (2), 22	Broche d'axe Ti Nitride, extérieur AR, fileté, 22 (2)	Nitruro di titanio perno cardine, posteriore esterno filettato (2), 22	Pasador roscado Ti Nitride, Trasero Exterior (2)
TLR2057	Aluminum Rear Hubs, 0 degree, 22	Hintere Aluminiumnaben, 0 Grad, 22	Moyeux AR aluminium, 0 degré, 22	Mozzi posteriori in alluminio, 0 gradi, 22	Manguetas traseras de aluminio, 0 grados, 22
TLR2060	Rear Camber Block, Mid Motor, Aluminum	Aluminium Spurstangenhalter hinten Heck Motor	Bloc de carrossage arrière, aluminium	Blocco camber posteriore, motore centrale, alluminio	Módulo camber trasero, motor trasero, aluminio

Part #	English	Deutsch	Français	Italiano	Español
TLR2061	Rear Camber Block, Mid Motor, Aluminum	Aluminium Spurstangenhalter hinten Mittel Motor	Bloc de carrossage arrière, moteur central, aluminium	Blocco camber posteriore, motore centrale, alluminio	Módulo camber trasero, motor central, aluminio
TLR2062	Front Camber Block, Alum: 22SCT	Spurstangenhalter Aluminium:22SCT	Block de carrossage avant, aluminium : 22SCT	Blocco camber anteriore, alluminio: 22SCT	Bloque camber delantero, aluminio: 22SCT
TLR2933	Rear Hex, Standard Width, Aluminum: 22SCT	Mitnehmer Hinten, Standard, Aluminium: 22SCT	Hexagone de roue arrière, largeur standard, aluminium : 22SCT	Esagono posteriore, larghezza standard, alluminio: 22SCT	Hexágono trasero estándar, Aluminio: 22SCT
TLR2934	Rear Hex, +.75mm Width, Aluminium: 22SCT	Mitnehmer Hinten, +75mm, Aluminium: 22SCT	Hexagone de roue arrière, +0.75mm de large, aluminium : 22SCT	Esagono posteriore, larghezza + 0,75mm, alluminio: 22SCT	Hexágono trasero, +0,75mm, Aluminio: 22SCT
TLR2935	Rear Hex, +1.5mm Width, Aluminium: 22SCT	Mitnehmer Hinten, + 1,5 mm, Aluminium: 22SCT	Hexagone de roue arrière, +1.5mm de large, aluminium : 22SCT	Esagono posteriore, larghezza + 1,5mm alluminio: 22SCT	Hexágono trasero +1,5mm, Aluminio: 22SCT
TLR2936	Front Hex, Aluminum: 22SCT	Schmutzfänger für Chassis: 22SCT	Protection de châssis : 22SCT	Copertura antipolvere per telaio: 22SCT	Protector chasis: 22SCT
TLR2950	Aluminum Hex Diff Wrench, 22	Aluminiumbuschlüssel, Differenzial, 22	Clé d'écrou de différentiel, aluminium, 22	Chiave dado differenziale alluminio, 22	Herramienta de aluminio para diferencial, 22
TLR2979	Aluminum, Toe Plate, 3.5°,HRC, 22	Aluminiumtritleiste, 3,5°, HRC, 22	Plaque de pincement aluminium, 3,5°, HRC, 22	Alluminio, piastra convergenza, 3,5°,HRC, 22	Placa de convergencia aluminio, 3,5°,HRC, 22
TLR2980	Aluminum, Toe Plate, 4°,HRC, 22	Aluminiumtritleiste, 4°, HRC, 22	Plaque de pincement aluminium, 4°, HRC, 22	Alluminio, piastra convergenza, 4°,HRC, 22	Placa de convergencia aluminio, 4°,HRC, 22
TLR2981	Aluminum, Toe Plate, 4.5°,HRC, 22	Aluminiumtritleiste, 4,5°, HRC, 22	Plaque de pincement aluminium, 4,5°, HRC, 22	Alluminio, piastra convergenza, 4,5°,HRC, 22	Placa de convergencia aluminio, 4,5°,HRC, 22
TLR2982	Aluminum, Toe Plate, 5°,HRC, 22	Aluminiumtritleiste, 5°, HRC, 22	Plaque de pincement aluminium, 5°, HRC, 22	Alluminio, piastra convergenza, 5°,HRC, 22	Placa de convergencia aluminio, 5°,HRC, 22
TLR2983	Aluminum, Toe Plate, 3°, HRC, 22	Aluminiumtritleiste, 3°, HRC, 22	Plaque de pincement aluminium, 3°, HRC, 22	Alluminio, piastra convergenza, 3°,HRC, 22	Placa de convergencia aluminio, 3°, HRC, 22
TLR2985	Aluminum, Toe Plate, 3.5°, LRC, 22	Aluminiumtritleiste, 3,5°, LRC, 22	Plaque de pincement aluminium, 3,5°, LRC, 22	Alluminio, piastra convergenza, 3,5°,LRC, 22	Placa de convergencia aluminio, 3,5°, LRC, 22
TLR2986	Aluminum, Toe Plate, 4°, LRC, 22	Aluminiumtritleiste, 4°, LRC, 22	Plaque de pincement aluminium, 4°, LRC, 22	Alluminio, piastra convergenza, 4°,LRC, 22	Placa de convergencia aluminio, 4°, LRC, 22
TLR2987	Aluminum Toe Plate, 4.5°. LRC, 22	Aluminiumtritleiste, 4,5°, LRC, 22	Plaque de pincement aluminium, 4,5°, LRC, 22	Alluminio, piastra convergenza, 4,5°. LRC, 22	Placa de convergencia aluminio, 4,5°. LRC, 22
TLR2988	Aluminum Toe Plate, 5°, LRC, 22	Aluminiumtritleiste, 5°, LRC, 22	Plaque de pincement aluminium, 5°, LRC, 22	Alluminio, piastra convergenza, 5°,LRC, 22	Placa de convergencia aluminio, 5°, LRC, 22
TLR2990	22 Slipper Adjustment Tool	22 Einstellwerkzeug Rutschkupplung	Outil de réglage de slipper, 22	22 Attrezzo regolazione attrito	Herramienta para slipper 22
TLR3979	76T Spur Gear, 22	76T Stirnradgetriebe, 22	Couronne 76 dents, 22	76T ruota dentata, 22	Corona 76T, 22
TLR4142	Chassis Dirt Cover: 22SCT	Schmutzfänger für Chassis: 22SCT	Protection de châssis : 22SCT	Copertura antipolvere per telaio: 22SCT	Protector chasis: 22SCT
TLR4143	Dirt Cover Mounts (2): 22SCT	Schmutzfängerhalter (2) :22SCT	Supports de protection de châssis : 22SCT	Supporti copertura antipolvere (2): 22SCT	Soportes del protector del chasis: 22SCT
TLR4150	Aluminum Battery Tray, 22	Aluminiumbatterieträger, 22	Réceptacle de batterie aluminium, 22	Alluminio vassoio batteria, 22	Soporte de baterías en aluminio, 22
TLR4151	Brass Weight System, Mid Motor, 22	Messinggewichtsschema, Mittemotor, 22	Système de poids laiton, moteur centre, 22	Sistema di pesatura in ottone, motore centrale, 22	Kit de lastre de latón, Motor central, 22
TLR4166	Titanium Shock Mounts, 22 (4)	Titandämpferbefestigungen, 22 (4)	Supports d'amortisseur titane, 22 (4)	Supporti in titanio ammortizzatore, 22 (4)	Soportes de amortiguador en titanio, 22 (4)
TLR5074	Low Friction Shock O-rings (8)	Stoßdämpferdichtungen (8)	Joints toriques d'amortisseurs basse friction (8)	O-rings ammortizzatori basso attrito (8)	Tóricas de baja fricción (8)
TLR5099	Aluminum, Shock Tool Kit, 12mm Shock	Aluminiumdämpferwerkzeug-satz, 12-mm-Dämpfer	Kit d'outils pour amortisseur aluminium, amortisseur 12 mm	Kit utensili ammortizzatori, ammortizzatore da 12mm, Alluminio	Herramienta de amortiguador aluminio, 12mm
TLR5162	Shock Spring, Rear, 1.6 Rate, Grey, 22T	Dämpferfeder hinten, Federkonstante 1,6, grau, 22T	Ressort d'amortisseur, AR, Taux 1.6 Gris, 22T	Molla ammortizzatore, posteriore, 1,6 grigio, 22T	Muelle trasero, 1,6 Gris, 22T
TLR5163	Shock Spring, Rear, 1.8 Rate, White, 22T	Dämpferfeder hinten, Federkonstante 1,8, weiß, 22T	Ressort d'amortisseur, AR, Taux 1.8 Blanc, 22T	Molla ammortizzatore, posteriore, 1,8 bianca, 22T	Muelle trasero, 1,8 Blanco, 22T
TLR5164	Shock Spring, Rear, 2.0 Rate, Yellow, 22T	Dämpferfeder hinten, Federkonstante 2,0, gelb, 22T	Ressort d'amortisseur, AR, Taux 2.0 Jaune, 22T	Molla ammortizzatore, posteriore, 2,0 gialla, 22T	Muelle, Trasero, 2,0 Amarillo, 22T

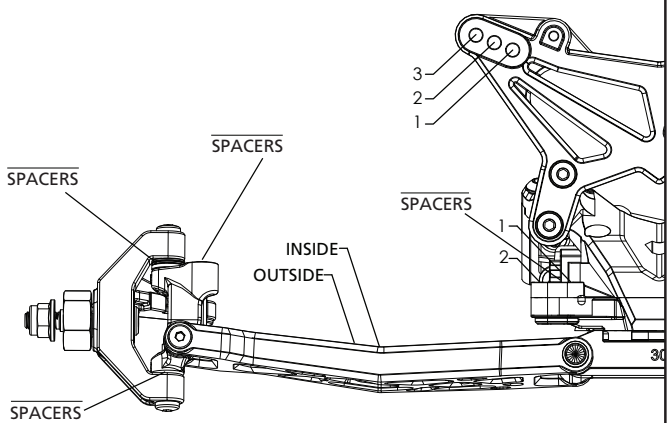
Part #	English	Deutsch	Français	Italiano	Español
TLR5179	Shock Spring, Front, 2.5 Rate Red, 22T	Dämpferfeder vorne, Federkonstante 2,5, Rôte, 22T	Ressort d'amortisseur, AV, Taux 2.5 rouge, 22T	Molla ammortizzatore, anteriore, 2,5 rosso, 22T	Muelle delantero, 2.5 rojo, 22T
TLR5180	Shock Spring, Front, 2.9 Rate, Orange, 22T	Dämpferfeder vorne, Federkonstante 2,9, orange, 22T	Ressort d'amortisseur, AV, Taux 2.9 Orange, 22T	Molla ammortizzatore, anteriore, 2,9 arancione, 22T	Muelle delantero, 2.9 Naranja, 22T
TLR5181	Shock Spring, Front, 3.2 Rate, Silver, 22T	Dämpferfeder vorne, Federkonstante 3,2, silber, 22T	Ressort d'amortisseur, AV, Taux 3.2 Argent, 22T	Molla ammortizzatore, anteriore, 3,2 argentata, 22T	Muelle delantero, 3.2 Plata, 22T
TLR5184	Shock Spring, Front, 4.1 Rate, Blk: 22T	Stoßdämpferfedern vorne Stärke 4,1 schwarz: 22T	Ressorts d'amortisseur avant, dureté 4.1, noir : 22T	Molla ammortizzatore anteriore, tasso 4.1, nero: 22SCT	Muelles delanteros, 4.1, Negros: 22T
TLR6019	Ballstud/Hub Spacer Set, Aluminum, 22	Kugelenbolzen-/Nabenabstandhaltersatz, Aluminum, 22	Jeu de goujons à rotule/ronnelles de fusée aluminium, 22	Perno della sfera / Set distanziatore mozzo, alluminio, 22	Bolas/Espaciadores, Aluminio, 22
TLR6030	Titanium Ball Stud, 4.8 x 6mm (2)	Kugelenbolzen, Titan, 4,8 x 6 mm (2)	Goujon à rotule titane 4,8 x 6 mm (2)	Perno della sfera, titanio 4.8 x 6mm (2)	Bolas de titanio, 4.8 x 6mm (2)
TLR6031	Titanium Ball Stud, 4.8 x 8mm (2)	Kugelenbolzen, Titan, 4,8 x 8 mm (2)	Goujon à rotule titane 4,8 x 8 mm (2)	Perno della sfera, titanio 4.8 x 8mm (2)	Bolas de titanio, 4.8 x 8mm (2)
TLR6032	Titanium Ball Stud, 4.8 x 10mm (2)	Kugelenbolzen, Titan, 4,8 x 10 mm (2)	Goujon à rotule titane 4,8 x 10 mm (2)	Perno della sfera, titanio 4.8 x 10mm (2)	Bolas de titanio, 4.8 x 10mm (2)
TLR6056	HD Turnbuckle Kit, Titanium (6): 22SCT	HD Gewindestange Kit, Titanium (6): 22SCT	Kit de biellettes en titane (6) : 22SCT	Kit tenditore HD, titanio (6): 22SCT	Tirantes HD de titanio (6): 22SCT
TLR7004	Wheel Yellow (2): 22SCT	Rad, gelb (2):22SCT	Jantes, jaunes (2) : 22SCT	Ruota gialla (2): 22SCT	Llanta amarilla (2): 22SCT
TLR7008	Wheel Disk, White (4): 22SCT	Wheel Disk, White (4): 22SCT	Flasques de jante, blancs (4) : 22SCT	Disco ruota bianco (4): 22SCT	Disco de llanta blanco (4): 22SCT
TLR7009	Bdlk Ring w/Scrws,Blk:22SCT	Beadlock Ring m. Schrauben, Schwarz: 22SCT	Anneaux Beadlock avec vis, noirs : 22SCT	Anello Beadlock c/viti, nero: 22SCT	Aro Beadlock negro con tornillería: 22SCT
TLR7010	Bdlk Rinw/Scrws,White:22SCT	Beadlock Ring m. Schrauben, Weiss: 22SCT	Anneaux Beadlock avec vis, blancs : 22SCT	Anello Beadlock c/viti, bianco: 22SCT	Aro Beadlock blanco con tornillería: 22SCT
TLR7012	Wheel, White (2): 22SCT	Rad, weiss (2):22SCT	Jantes, blanches (2) : SCT	Ruota bianca (2): 22SCT	Llanta blanca (2): 22SCT
TLR7013	Wheel Disk, Black (4): 22SCT	Wheel Disk, Black (4): 22SCT	Flasques de jante, noirs (4) : 22SCT	Disco ruota nero (4): 22SCT	Disco de llanta negro (4): 22SCT
TLR8061	Hi Performance PRE-CUT SCT Body: 22SCT	Hi Performance PRE-CUT SCT Body: 22SCT	Carrosserie SCT hautes performances prédécoupée : 22SCT	Carrozzeria SCT pretagliata, alte prestazioni: 22SCT	Carrocería Hi-performance, precortada: 22SCT
TLR8300	TLR Decal Sheet	TLR-Dekorbogen	Planche de décalcomanies TLR	TLR Foglio con decalcomanie	Adhesivos TLR
TLR99101	Shock Shaft Pliers	Dämpfer Kolbenstange Zange	Pince à tige d'amortisseur	Pinze albero ammortizzatore	Alicates para vástagos de amortiguador
TLR99102	Turnbuckle Wrench, 22, 8B, 8T	Stellschlüssel für Gewindestift, 22, 8B, 8T	Clé à biellettes ,22, 8B, 8T	Chiave tenditore, 22, 8B, 8T	Herramienta para ajustar tirantes, 22, 8B, 8T

Name: _____ Date: _____ Event: _____
 City: _____ State: _____ Track: _____

Track Conditions: Indoor Tight Smooth Hard Packed Blue Groove Wet Grass Low Bite High Bite
 Outdoor Open Rough Loose/Loamy Dry Dusty Astro Turf Med Bite Other _____

Front Suspension

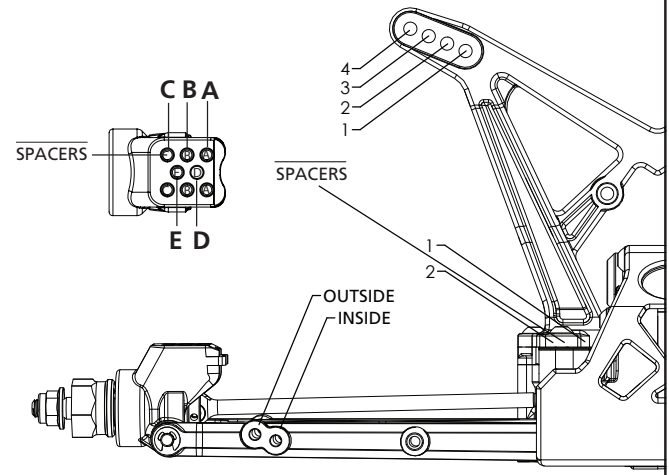
Toe: _____
 Ride Height: _____
 Camber: _____
 Caster: 0° 3° 5° 10°
 Kick Angle: 20° 25° 30°
 Sway Bar: _____
 Shock Type: Bladder Emulsion Oil: _____
 Piston: _____
 Spring: _____
 Shock Limiters: _____
 Shock Location: _____
 Bump Steer: _____
 Camber Link: _____



Notes: _____

Rear Suspension

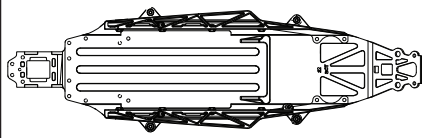
Chassis Configuration: Rear Motor Mid Motor
 Differential: Ball Diff Gear Diff Gear Diff Fluid: _____
 Toe: _____
 Anti-Squat: _____
 Roll Center: Low Roll Center (LRC) High Roll Center (HRC)
 Ride Height: _____
 Camber: _____
 Rear Hub Spacing: _____
 Hex Width: _____
 Sway Bar: _____
 Shock Type: Bladder Emulsion Oil: _____
 Piston: _____
 Spring: _____
 Shock Limiters: _____
 Camber Link: _____
 Shock Locations: _____
 Battery Position: _____



Electronics

Radio: _____ Timing Advance: _____
 Servo: _____ Throttle/Brake Expo: _____
 ESC: _____ Servo Expo: _____
 Initial Brake: _____ Throttle/Brake EPA: _____
 Drag Brake: _____ Motor: _____
 Throttle Profile: _____ Pinion: _____ Spur: _____
 Battery: _____

Weight Placement
(Mark with "X")



Tires	Compound	Insert	Additive
Front: _____	_____	_____	_____
Rear: _____	_____	_____	_____

Weight of each piece _____ oz./g

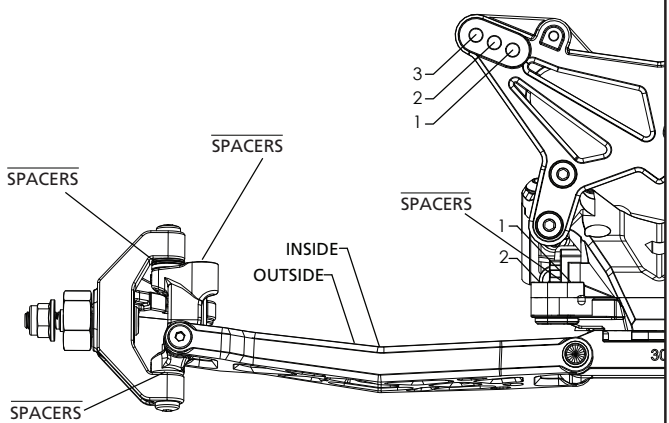
Notes: _____

Name: _____ Date: _____ Event: _____
 City: _____ State: _____ Track: _____

Track Conditions: Indoor Tight Smooth Hard Packed Blue Groove Wet Grass Low Bite High Bite
 Outdoor Open Rough Loose/Loamy Dry Dusty Astro Turf Med Bite Other _____

Front Suspension

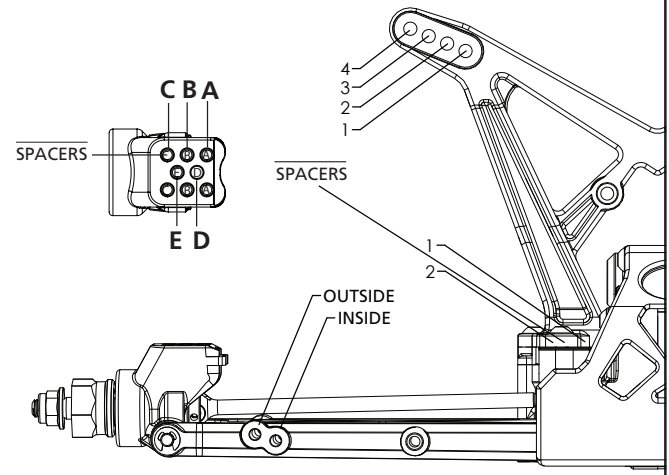
Toe: _____
 Ride Height: _____
 Camber: _____
 Caster: 0° 3° 5° 10°
 Kick Angle: 20° 25° 30°
 Sway Bar: _____
 Shock Type: Bladder Emulsion Oil: _____
 Piston: _____
 Spring: _____
 Shock Limiters: _____
 Shock Location: _____
 Bump Steer: _____
 Camber Link: _____



Notes: _____

Rear Suspension

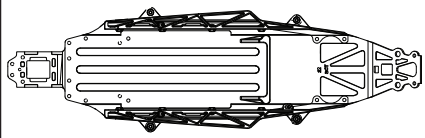
Chassis Configuration: Rear Motor Mid Motor
 Differential: Ball Diff Gear Diff Gear Diff Fluid: _____
 Toe: _____
 Anti-Squat: _____
 Roll Center: Low Roll Center (LRC) High Roll Center (HRC)
 Ride Height: _____
 Camber: _____
 Rear Hub Spacing: _____
 Hex Width: _____
 Sway Bar: _____
 Shock Type: Bladder Emulsion Oil: _____
 Piston: _____
 Spring: _____
 Shock Limiters: _____
 Camber Link: _____
 Shock Locations: _____
 Battery Position: _____



Electronics

Radio: _____ Timing Advance: _____
 Servo: _____ Throttle/Brake Expo: _____
 ESC: _____ Servo Expo: _____
 Initial Brake: _____ Throttle/Brake EPA: _____
 Drag Brake: _____ Motor: _____
 Throttle Profile: _____ Pinion: _____ Spur: _____
 Battery: _____

Weight Placement
(Mark with "X")



Weight of each piece _____ oz./g

Tires	Compound	Insert	Additive
Front: _____	_____	_____	_____
Rear: _____	_____	_____	_____

Notes: _____



TLRACING.COM

Printed 6/2012 © 2012 Horizon Hobby, Inc. Team Losi, the TLR logo and Losi-Lok are trademarks or registered trademarks of Horizon Hobby, Inc. 800-0473 35317

Horizon Hobby, Inc.
4105 Fieldstone Road,
Champaign, IL 61822 USA

Horizon Hobby Limited
Units 1-4 Ployters Rd
Staple Tye, Harlow, Essex
CM18 7NS, United Kingdom

Horizon Hobby GmbH
Christian-Junge-Straße 1
25337 Elmshorn, Germany
