

NAME: Remy BERTRAND DATE: _____

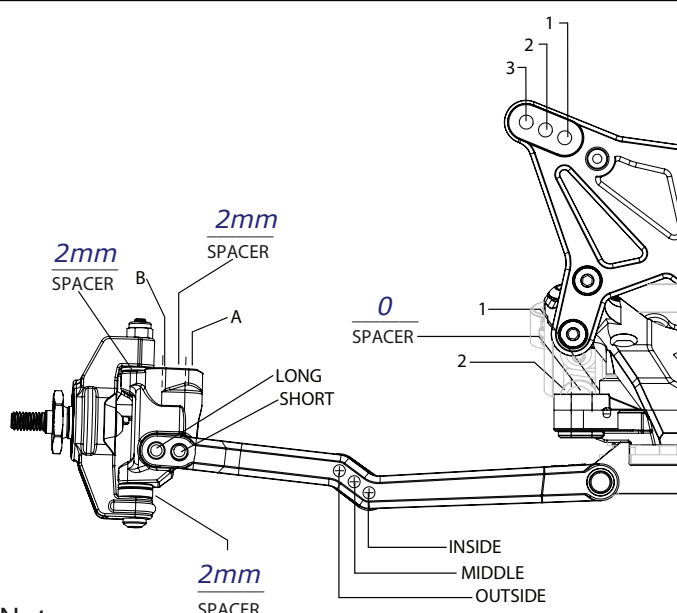


EVENT: starting set-up TRACK: carpet indoor

TRACK CONDITIONS: Indoor Tight Smooth Hard Packed Blue Groove Wet Grass Low Bite Med Bite High Bite
 Outdoor Open Rough Loose/Loamy Dry Dusty Astro turf Other: carpet

FRONT SUSPENSION

Toe: 0
 Ride Height: 18mm Camber: -1°
 Caster: 0° 5°
 Kick Angle: 20° 25° 30°
 VLA Setting: Short Arm Long Arm
 Oil: 35wt
 Piston: 2 x 1,6
 Spring: Standard Low Freq. Color: Asso orange
 Front Pivot: Aluminum Plastic HRC
 Kick Shim: Brass Plastic
 Shock Limiters: 2mm Stroke: _____
 Shock Location: 2 - outside
 Steering Type: Slide Rack Bell Cranks
 Spindle Ball Stud: Standard Low Mount
 Bumper Steer Spacers: 1mm
 Ackermann Ball Stud: Standard Low Mount
 Ackermann Spacers: 0,5 mm
 Ackerman Arm: #1 #2 #3 _____
 Trail: 2mm 3mm 4mm
 Camber Link: 2 - A

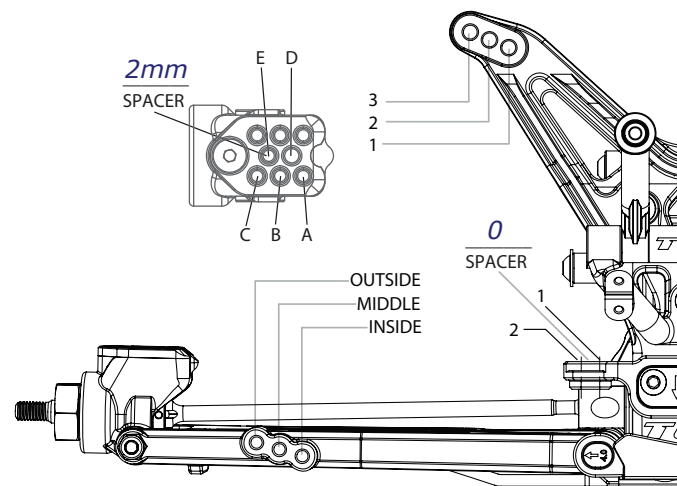


Notes:

*Servo mounted behind servo mount
 +3mm aluminium rear hubs
 45g brass plate under ESC
 50g + 30g brass plates under battery*

REAR SUSPENSION

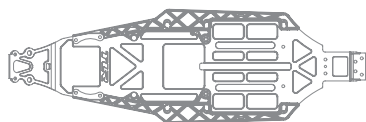
Transmission Type: 3-Gear 4-Gear Laydown
 Toe Inserts: 0.5° 1° 1.5° 2° 2.5° 3° 3.5° 4°
 Anti-Squat Inserts: 0° .5° 1° 1.5° 2° 2.5° 3°
 Roll Center: Low Roll Center (LRC) High Roll Center (HRC)
 Ride Height: 18mm Camber: -1,5°
 Rear Hub Spacing: middle
 Hex Width: std
 Sway Bar: no
 Oil: 35wt
 Piston: 2 x 1,6
 Spring: Standard Low Freq. Color: Yatabe green
 Shock Limiters: 7mm Stroke: _____
 Shock Location: 2 - middle
 Inner Link Spacer: -1mm 0mm +1mm
 Camber Link: 1 - D
 Body: Proline flo-tek
 Battery Position: front
 Diff Type: Ball Gear Setting: #10000



ELECTRONICS

Radio: Sanwa MT44 Timing Advance: _____
 Servo: Savox 1257TG Throttle/Brake Expo: 0
 ESC: HW v2.1 Servo Expo: -20%
 Initial Brake: drag brake Motor: 8.5T
 Drag Brake: 5% Pinion: 18 Spur: kit
 Throttle Profile: linear Battery: shorty LCG (150g)

Weight Placement
 (Mark with "X")



TIRES Brand & Type

Front: Schum. stagger

Rear: Schum. minipin

Notes:

A bit too much front roll, front sway bar would be great.

Compound

yellow

yellow

Insert

hard

hard

Additive