

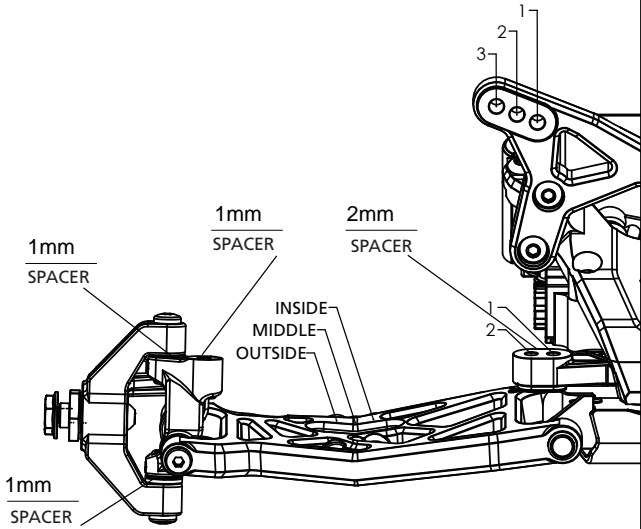
Name: Jared Kirkwood Date: 10/6/2012 Event: SRI Showdown

City: Louisville State: KY Track: SRI Raceway

Track  Indoor  Tight  Smooth  Hard Packed  Blue Groove  Wet  Grass  Low Bite  High Bite  
 Conditions  Outdoor  Open  Rough  Loose/Loamy  Dry  Dusty  Astro Turf  Med Bite  Other 50 deg

**Front Suspension**

Toe: 0  
 Ride Height: 23.5mm  
 Camber: .5 deg  
 Caster:  0°  3°  5°  10°  
 Kick Angle:  20°  25°  30°  
 Sway Bar: none  
 Oil: Losi 25wt (Use 30wt in warmer temps)  
 Piston: 1.6x2 squared  
 Spring: Avid Yellow  
 Spindle Type:  Inline  Trailing  
 Shock Limiters: 3mm  
 Shock Location: 2-Middle  
 Bump Steer: 1 (use zero with plastic spindle carrier)  
 Camber Link: 1

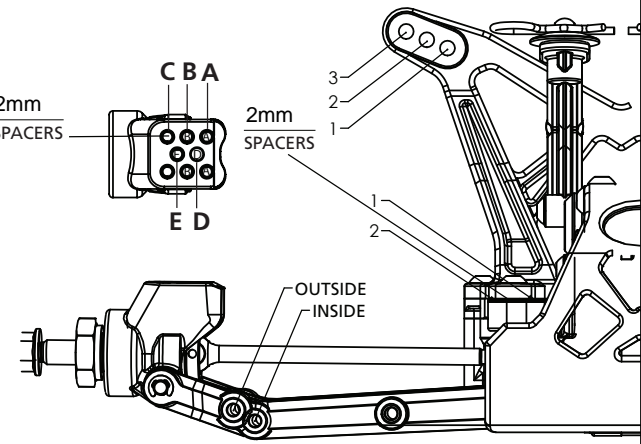


Notes: 4mm Aluminum Trailing Spindles, Aluminum Pivot Titanium Links, BallStuds, Screws and Shock Mounts  
 -5mm Shorter Chassis

Results: TQ, 2nd place finish.

**Rear Suspension**

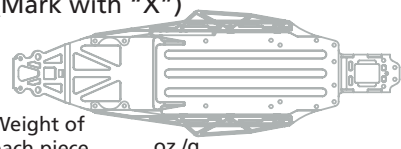
Chassis Configuration:  Rear Motor  Mid Motor  
 Toe: 3.5  
 Anti-Squat: HRC #2 shim used, a little less than 2 deg, see notes below.  
 Roll Center:  Low Roll Center (LRC)  High Roll Center (HRC)  
 Ride Height: 23.25mm  
 Camber: -1 deg  
 Rear Hub Spacing: 1mm back  
 Hex Width: +.75mm  
 Sway Bar: none  
 Oil: 22.5 wt (use 27.5wt in warmer temps)  
 Piston: 1.6mmx2 squared  
 Spring: Avid Yellow  
 Shock Limiters: .5mm  
 Camber Link: 1-B  
 Shock Locations: 2-Inside  
 Wing/Wickerbill: JC Stepped cut at line 2  
 Battery Position: Fullsize Tray, 1 pad laid down in front.



**Electronics**

Radio: M11 Timing Advance: 0  
 Servo: Orion Throttle/Brake Expo: -4  
 ESC: Viper Servo Expo: -3  
 Initial Brake: 0 Throttle/Brake EPA: 140/120  
 Drag Brake: -18 Motor: Orion 7.5  
 Throttle Profile: #2 Pinion: 21 Spur: 81  
 Battery: Speedpower 96mm

Weight Placement (Mark with "X")



Weight of each piece oz./g

Tires Front: 7202 chamfered Compound Silver Insert 3/4 Losi Rear Additive none  
 Rear: AKA Impacts Super Soft Trinity Bomb 2 none  
 Notes: JC Mono AE Rear Wheel, Plastic Rear Antisquat Pivot, 14g on chassis under ESC, greased  
 HRC spaced up .5. Transmission spaced up 1.5mm total. Motor lowered 1mm.