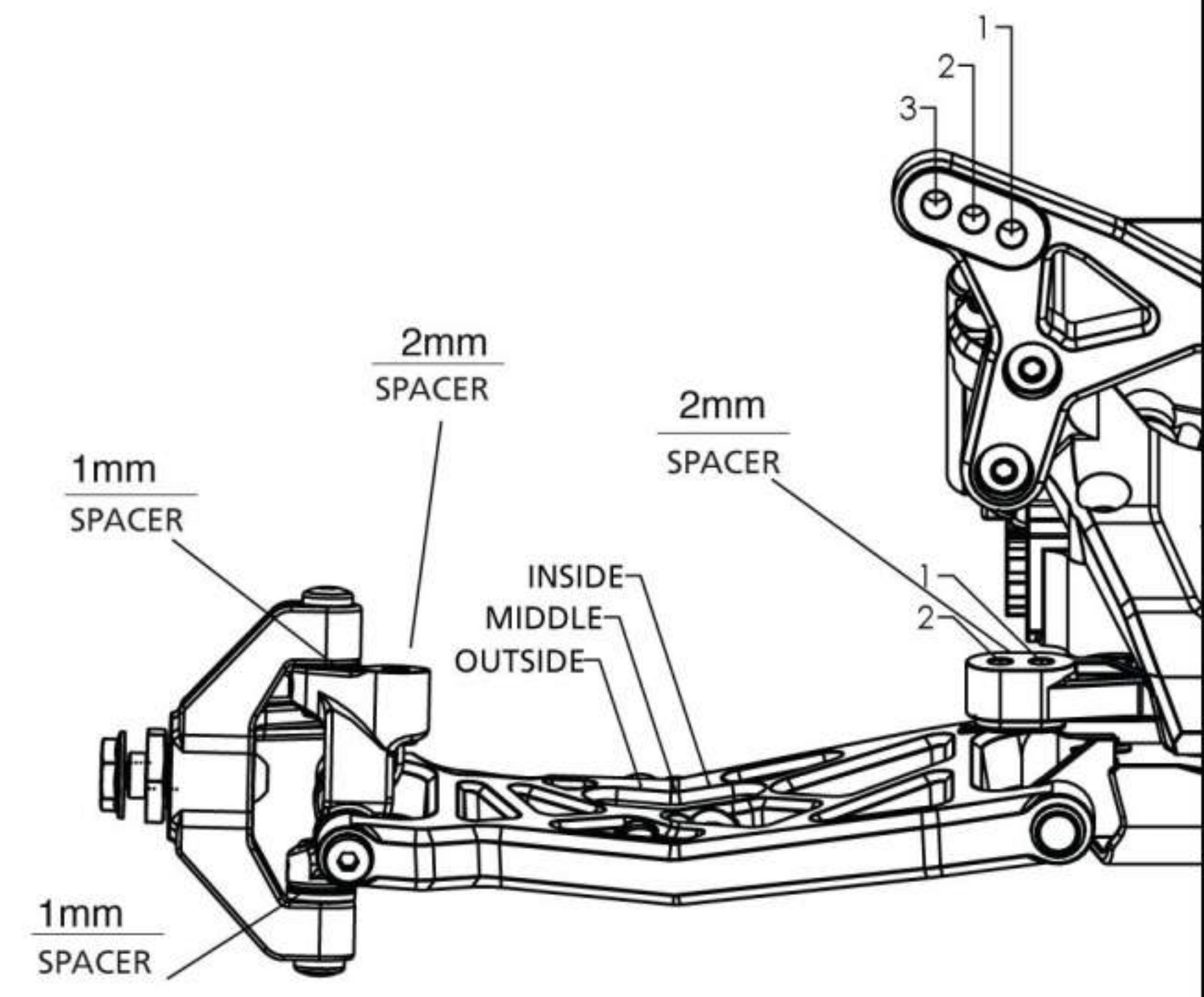


Name: Christopher Delves Date: _____ Event: _____
 City: _____ State: _____ Track: Starting Point for Mid Motor Kit at Maritime Raceway
 Track Conditions: Indoor Tight Smooth Hard Packed Blue Groove Wet Grass Low Bite High Bite
 Outdoor Open Rough Loose/Loamy Dry Dusty Astro Turf Med Bite Other Carpet/Astro/Wood

Front Suspension

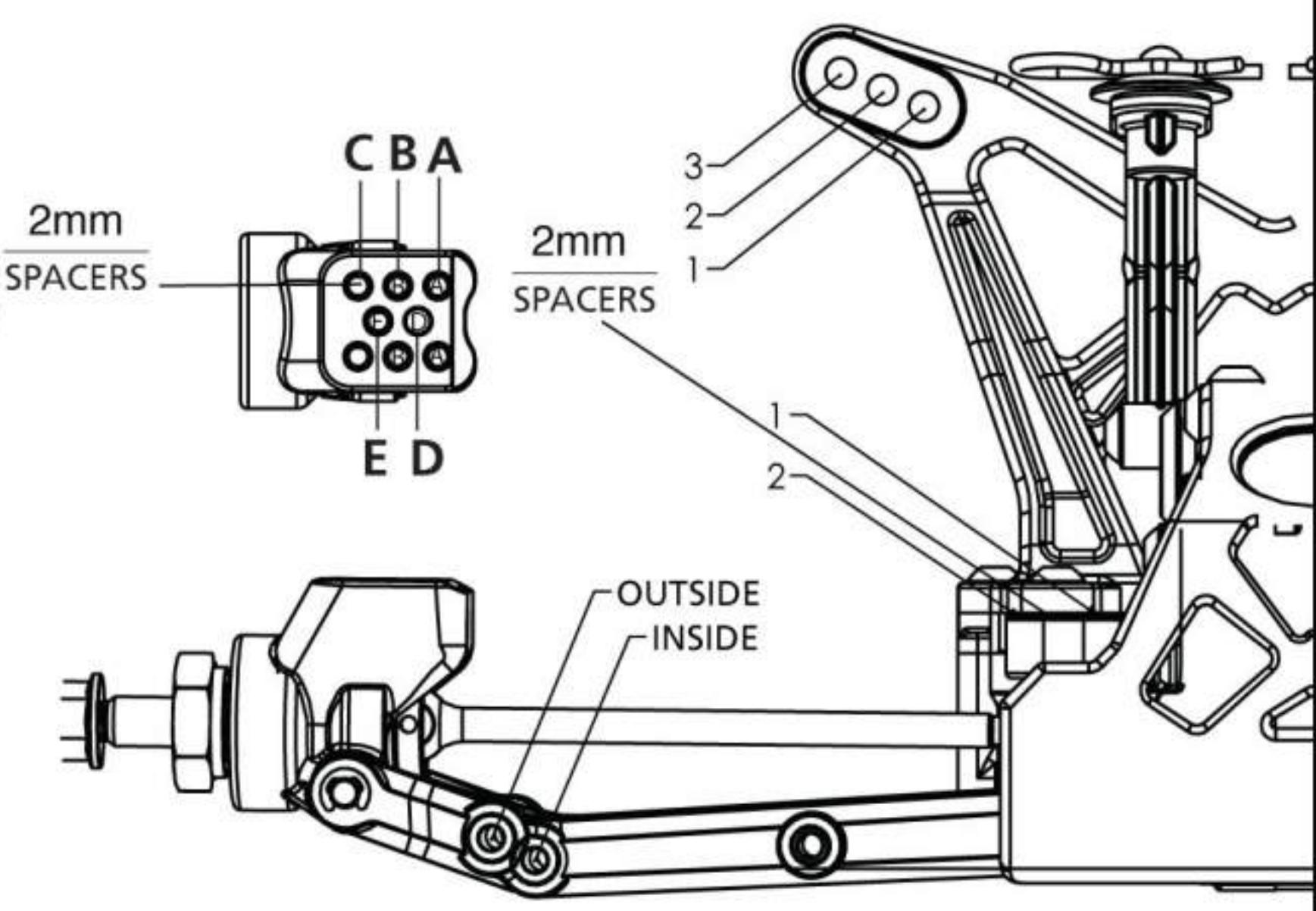
Toe: 0.5 Degree Toe-Out
 Ride Height: 19mm
 Camber: -1.5 degree
 Caster: 0° 3° 5° 10°
 Kick Angle: 20° 25° 30°
 Sway Bar: N/A
 Oil: Losi 30wt
 Piston: 4x55 (Rounded edge of piston)
 Spring: Green
 Spindle Type: Inline Trailing
 Shock Limiters: 2mm
 Shock Location: Tower = 2 Wishbone = Middle
 Bump Steer: No Washers
 Camber Link: Position 1



Notes: Droop Front Shock Bottoms - No thread showing.
Droop Rear Shock Bottom - 3 complete turns

Rear Suspension

Chassis Configuration: Rear Motor Mid Motor
 Toe: 4 Degrees
 Anti-Squat: 2 Degrees
 Roll Center: Low Roll Center (LRC) High Roll Center (HRC)
 Ride Height: 20mm
 Camber: -1.5 Degree
 Rear Hub Spacing: Middle
 Hex Width: Std
 Sway Bar: N/A
 Oil: Losi 25Wt
 Piston: 4x55 (Rounded edge of piston)
 Spring: Yellow
 Shock Limiters: None
 Camber Link: Hub = E Tower = 1
 Shock Locations: Tower = 2 Wishbone = Std Inside
 Wing/Wickerbill: Standard Wing
 Battery Position: Saddle Xcelorin's up against the motor gaurd



Electronics

Radio: KO with SPM Timing Advance: None
 Servo: SPM 6070 Throttle/Brake Expo: None
 ESC: _____ Servo Expo: -15
 Initial Brake: _____ Throttle/Brake EPA: None
 Drag Brake: _____ Motor: _____
 Throttle Profile: _____ Pinion: 20 Spur: 78
 Battery: Xcelorin Saddle

Weight Placement (Mark with "X")

 Weight of each piece _____ oz./g

Tires
 Front: SHU Stagger Rib Compound Yellow Insert Answer RC Blue Foam Additive _____
 Rear: SHU Mini Pin Compound Yellow Insert Answer RC Blue Foam Additive _____
 Notes: Motor Gaurd Screws removed