

Setup Sheet

Track: Dalton Raceway ROAR Nats

Driver: Brian Kinwald

Indoor
 Outdoor

Smooth
 Rough

Slippery
 High-Bite
 Blue-Groove

Date: August 20, 2000

Tight / Open

FRONT SUSPENSION

(Circle or Check the Appropriate Settings)

Toe In 1°
 Out

Ride Height Arms level

Camber - 0°
 +

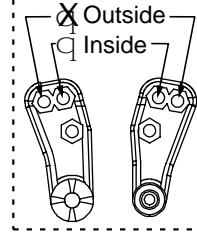
Caster Stock
 Other 25°

Sway Bar No
 Yes size _____

of washers under steering / tie-rod ball studs

Spindle ball stud: 2

Bellcrank ball stud: 1



of washers under ball stud: 1

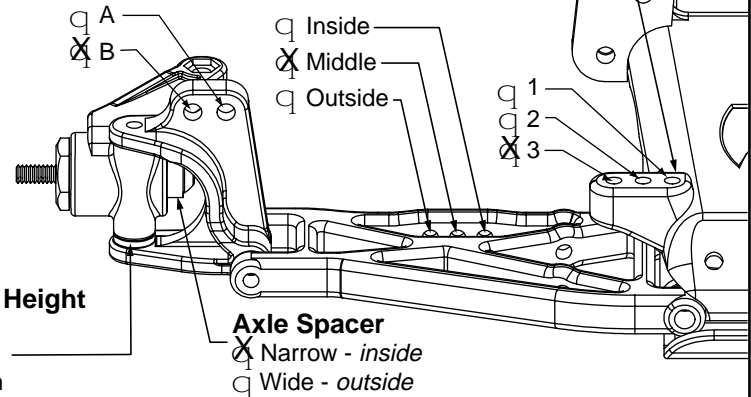
Front Shocks

Oil: 30 wt Losi

Piston: 56 Standard / Drilled

Spring: Green

Limiters: Inside- .050 Outside- _____



REAR SUSPENSION

Toe-In Inside 3°
 Outside

Pivot Support 1 No Shim
 Shim Under Front
 Shim Under Rear } # of shims: _____

Ride Height Bones Level

Camber - 0°
 +

Drive Shafts Dogbones Aluminum
 CVDs Steel

Rear Hub Spacing Forward
 Center
 Rear

Outdrives Steel
 Plastic

Sway Bar No
 Yes size _____

Rear Shocks

Oil: 30 wt Losi

Piston: 56 Standard / Drilled

Spring: Red

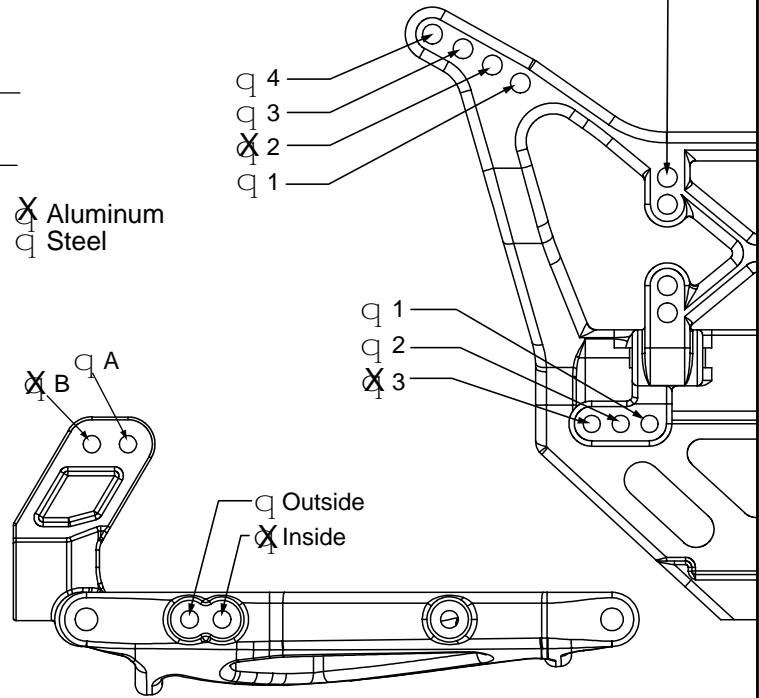
Limiters: Inside- .100 Outside- 0

Wing Position

Forward
 Back

Wing Mount

Top
 Bottom



Tires Front: 4wd Taper Pin

Compound Silver

Foam Trinity Blue

Motor: 11x2 Pinion/Spur 24/92
Losi 21/82

Rear: Taper Pin

Silver

Trinity Blue

Battery Position: Forward

Notes: _____