



Offert par [www.petitrc.fr.st](http://www.petitrc.fr.st)

# Setup Sheet

Track: Trelleborg EURO 2000

Driver: Hubert Honigl

Indoor  
 Outdoor

Smooth  
 Rough

Slippery  
 High-Bite  
 Blue-Groove

Date: Jul 20, 2000

Tight /  Open

## FRONT SUSPENSION (Circle or Check the Appropriate Settings)

Toe  In 1 °  
 Out

Ride Height Arms Level

Camber  - 1 °  
 +

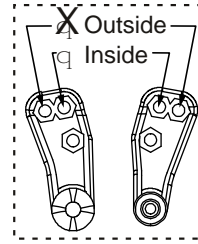
Caster  Stock  
 Other

Sway Bar  No  
 Yes size

# of washers under steering / tie-rod ball studs

Spindle ball stud: 1

Bellcrank ball stud: \_\_\_\_\_



# of washers under ball stud 2

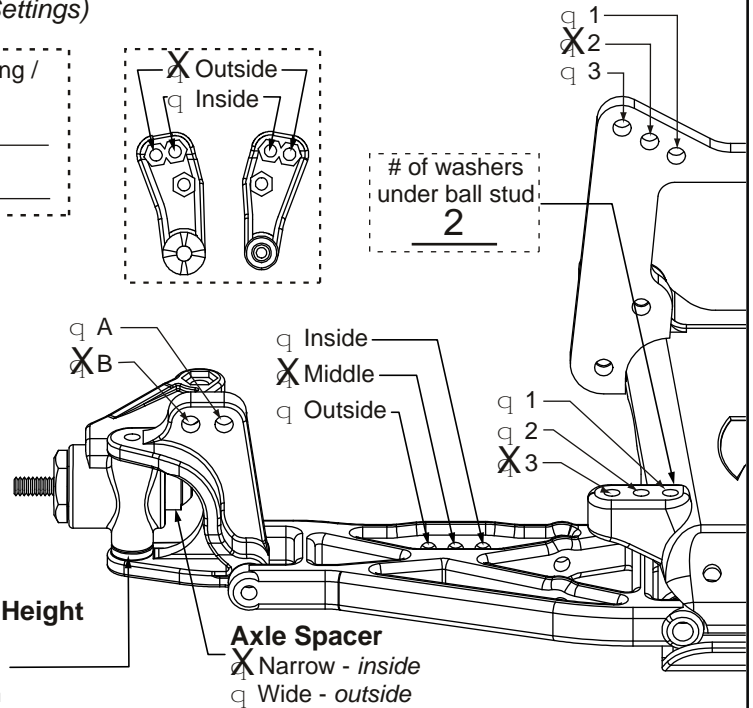
### Front Shocks

Oil: 25 wt Losi

Piston: 56  Standard /  Drilled

Spring: Green

Limiters:  Inside- \_\_\_\_\_  Outside- \_\_\_\_\_



## REAR SUSPENSION

Toe-In  Inside 3 °  
 Outside

Pivot Support 2  No Shim  
 Shim Under Front  
 Shim Under Rear > # of shims: 7°

Ride Height Dogbones level

Camber  - 1 °  
 +

Drive Shafts  Dogbones  Aluminum  
 CVDs  Steel

Rear Hub Spacing  Forward  
 Center  
 Rear

Outdrives  Steel  
 Plastic

Sway Bar  No  
 Yes size

### Rear Shocks

Oil: 27 1/2 wt Losi

Piston: 56  Standard /  Drilled

Spring: Red

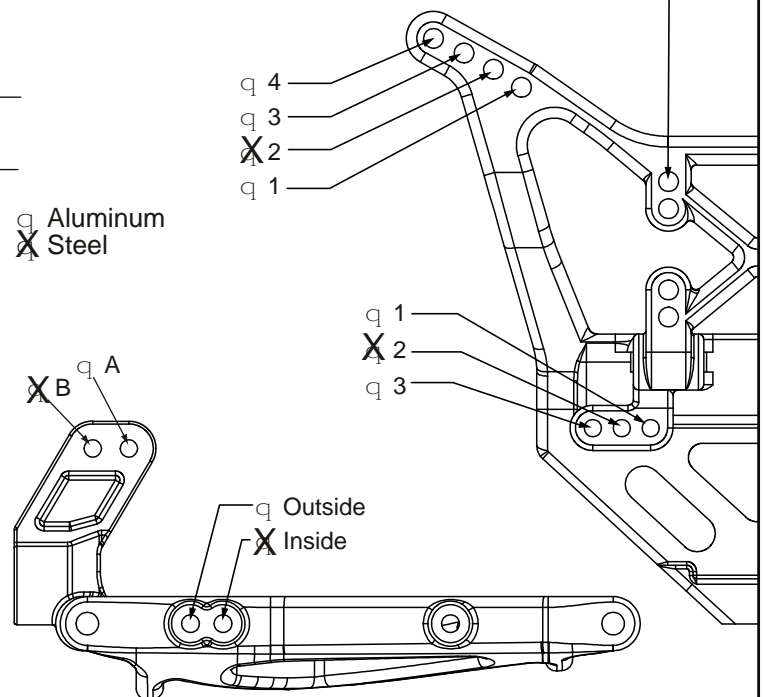
Limiters:  Inside- \_\_\_\_\_  Outside- \_\_\_\_\_

### Wing Position

Forward  
 Back

### Wing Mount

Top  
 Bottom



Tires Front: A-7204 Ex-Wide body

Compound Silver

Foam Original

Rear: Proline Bow Tie

M3

Original

Motor: 11x2 LRP Pinion/Spur: 21/84

Battery Position: Forward

Notes: Front Wing, V-wing, 15g under in front bulkhead