



# PRICE LIST REFERENCE GUIDE

Effective: 8/1/97

©1997 TEAM LOSI, INC.

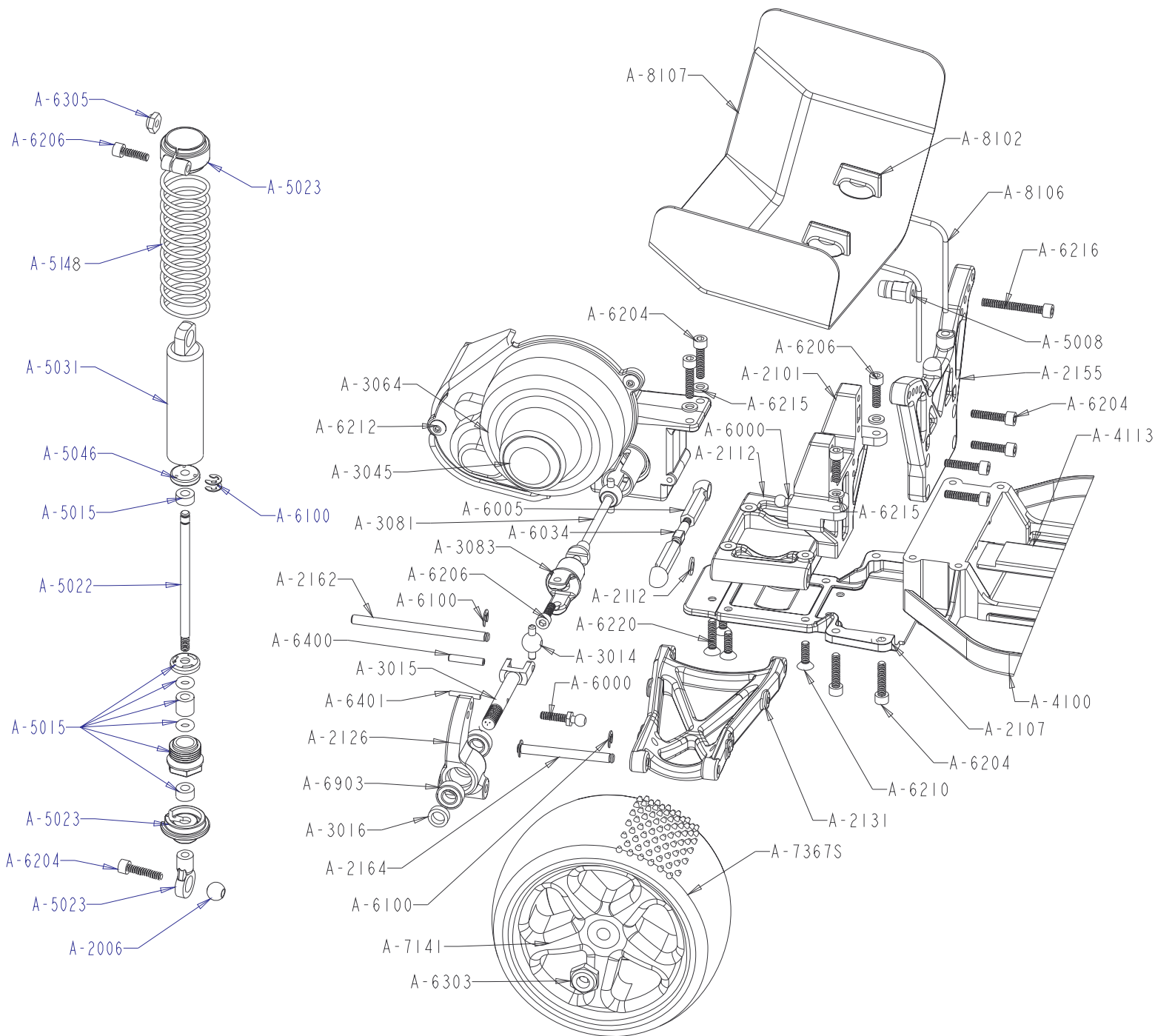
NOT RESPONSIBLE FOR TYPOGRAPHICAL ERRORS

ALL PRICES SUBJECT TO CHANGE WITHOUT NOTICE

## TEAM LOSI PERFORMANCE

## CHOICE OF CHAMPIONS

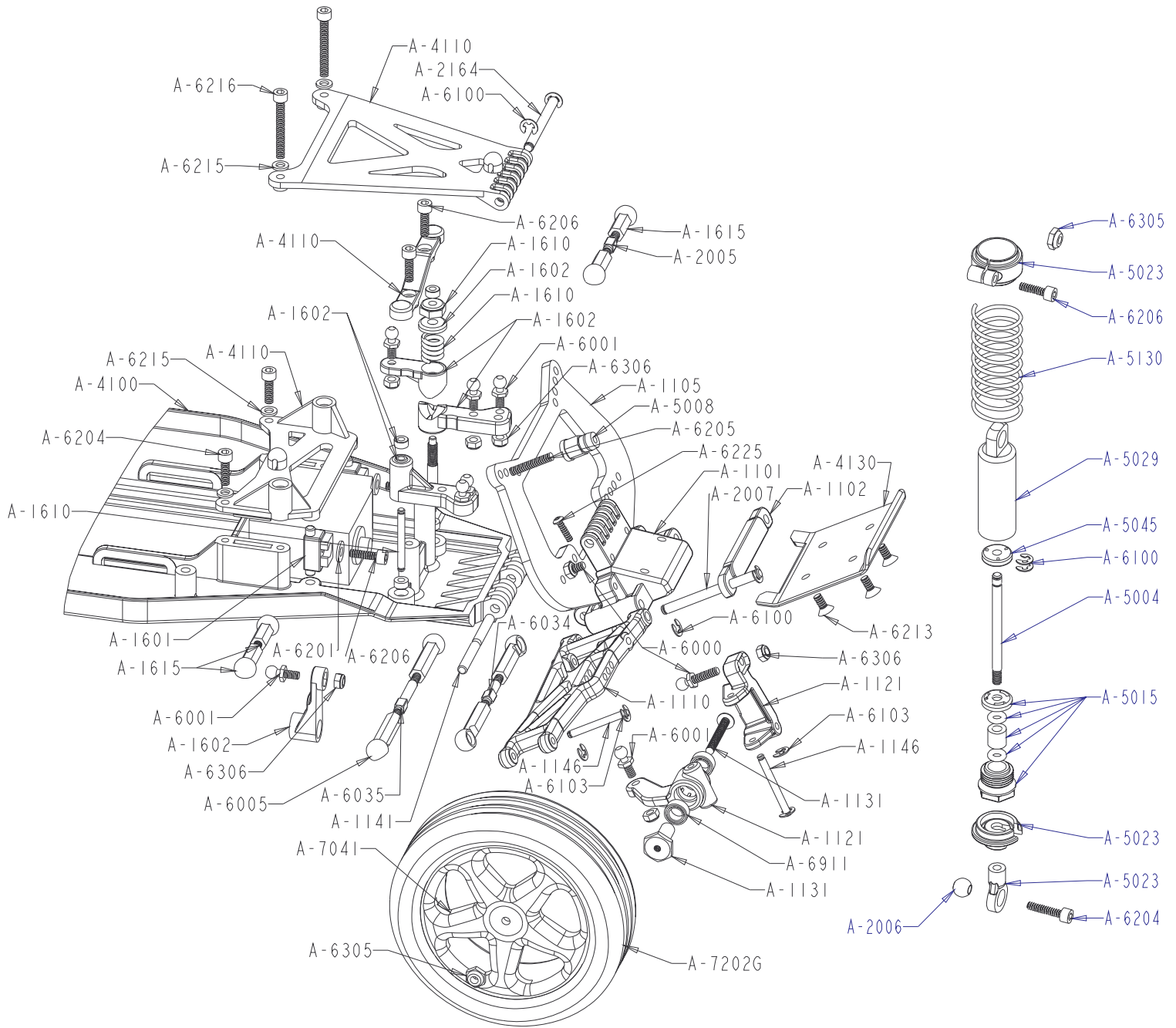
A-0026	Double-X 'CR' Kit w/Bearings, Slipper, Hydra-Drive .....	1	\$349.95	A-3125	9/16" x 1/4" Thrust Bearing Assy .....	1	2.50
A-1101	Front Bulkhead .....	1	5.00	A-3126	Hydra-Drive Fluid "Standard" .....	1	3.00
A-1105	Front Shock Tower (XX) .....	1	6.00	A-3130	Hydra-Drive Rebuild Kit .....	1	9.95
A-1110	Front Suspension Arms (XX) .....	2	6.50	A-3132	Slipper Back Plate (XX,XXT) .....	1	6.00
A-1121	25° Front Spindles & Carriers (XX) .....	4	9.00	A-3904	84T Hydra-Drive / Slipper Gear .....	1	3.50
A-1131	Front Stub Axles and Screws (XX) .....	2	5.00	A-4002	Antenna Kit .....	1	2.25
A-1141	Pin Set for Front Bulkhead (upper & lower) .....	2	3.00	A-4003	Antenna Caps .....	8	1.25
A-1143	Inner Front Hinge pins (XX) .....	2	3.00	A-4004	Servo Tape .....	6	1.75
A-1146	Front Outer & King Pin 3/32" (XX) .....	2	3.00	A-4010	Battery Strap Set .....	2	2.75
A-1602	Adjustable Steering & Servo Mount Set .....	1	6.00	A-4015	Foam Battery Block Set (XX,XXT) .....	2	2.50
A-1610	Steering Hardware Set (XX,XXT) .....	4	3.50	A-4100	Main Chassis w/Brace (XX) .....	1	24.95
A-1615	Short Ball Cups & Threaded Rod (XX,XXT) .....	1	2.75	A-4110	Chassis Brace Set (XX,XXT) .....	1	6.00
A-2005	Adjustable L/R Threaded Rods w/ends (1.125") .....	2	4.50	A-4113	Battery Hold-Down Strap Standard (XX) .....	1	3.00
A-2006	Swivel Suspension Balls .250" .....	8	4.00	A-4130	Front Bumper (XX,XXT) .....	1	3.00
A-2012	Assembly Wrench .....	1	1.50	A-5004	Shock Shaft .6" .....	1	3.00
A-2101	Rear Bulkhead .....	1	5.00	A-5008	Upper Shock Mount Bushing .....	4	2.00
A-2107	'CR' Rear Pivot Plate .....	1	4.00	A-5015	Double O-Ring Shock Cartridge .....	1	2.00
A-2112	'CR' Rear Pivot Block 0° .....	1	3.50	A-5022	Shock Shaft 1.2" .....	1	3.00
A-2113	'CR' Rear Pivot Block 2° .....	1	3.50	A-5023	Spring Clamps & Cups .....	2	2.50
A-2126	'CR' Rear Hub Set .....	2	6.00	A-5029	.6" Shock Body Hard Anodized .....	1	8.00
A-2131	'CR' Rear Suspension Arms (XX) .....	2	7.00	A-5031	1.2" Shock Body Hard Anodized .....	1	8.00
A-2155	Rear Shock tower (XX) .....	1	6.00	A-5043	Teflon Shock Pistons #60 (Natural) .....	4	3.00
A-2162	'CR' Rear Inner Hinge Pins .....	2	3.00	A-5045	Teflon Shock Pistons #57 (Black) .....	4	3.00
A-2164	Outer Rear Hinge Pins .....	2	3.00	A-5046	Teflon Shock Pistons #56 (Red) .....	4	3.00
A-3014	Universal Pivots .....	2	4.50	A-5047	Teflon Shock Pistons #55 (Orange) .....	4	3.00
A-3015	Rear Axle, Spacer & Pin .....	1	6.00	A-5048	Teflon Shock Pistons #54 (Blue) .....	4	3.00
A-3016	Rear Axle Spacers .....	2	1.25	A-5060	.6" Titanium Nitrided Shock Shaft .....	1	7.00
A-3045	Slipper Gear Cover Plug .....	4	1.50	A-5062	1.2" Titanium Nitrided Shock Shaft .....	1	7.00
A-3052	Trans w/Friction Slipper 2.19:1 .....	1	120.00	A-5130	2" Spring 3.2 Rate (Silver) .....	2	2.00
A-3058	Trans Case Set 2.19:1 .....	2	6.00	A-5148	2.75" Spring 2.0 Rate (Yellow) .....	2	2.50
A-3060	Slipper Shaft, Spacer & Hardware .....	1	5.50	A-5224	SILATECH Competition Shock Fluid 350 / 30 wt .....	1	3.50
A-3061	Transmission Screw Set .....	4	2.00	A-6000	Studded Balls w/Rod Ends 4-40 X 3/8" .....	4	3.50
A-3063	Motor Plate .....	1	8.00	A-6001	Studded Balls w/Rod Ends 4-40 X 3/16" .....	4	3.50
A-3064	Gear Cover & Plug .....	1	2.50	A-6003	Foam Things (Linkage Rings) .....	8	1.50
A-3065	Silicone Differential Compound .....	1	2.50	A-6005	H.D. 30° Plastic Rod Ends .....	16	5.00
A-3069	Complete Diff Assembly (2.19 & 2.61:1) .....	1	44.95	A-6034	Adjustable L/R Rod Set 1.375" w/ends .....	2	3.50
A-3070	Differential Drive Rings .....	2	2.00	A-6035	Adjustable L/R Rod Set 1.625" w/ends .....	2	3.50
A-3071	Differential Thrust Bearing Assy .....	1	6.75	A-6100	E-Clips 1/8" .....	12	1.25
A-3072	Diff Tube .....	1	2.25	A-6102	C-Clips 3/16" .....	12	1.75
A-3073	Outdrive Cup .....	1	7.00	A-6103	E-Clips 3/32" .....	12	1.25
A-3074	Diff Gear only 2.19:1 .....	1	2.00	A-6201	3mm x 8mm Socket Head w/Washers (Motor) .....	10	3.00
A-3075	Upper Gear, Etc 2.19:1 .....	1	6.00	A-6204	4-40 x 1/2" Socket Head .....	10	1.50
A-3078	Diff Screw,Hardware & Seal .....	7	3.50	A-6205	4-40 x 3/4" Socket Head .....	10	1.50
A-3079	Idler Gear 2.19:1 .....	2	3.50	A-6206	4-40 x 3/8" Socket Head .....	10	1.50
A-3081	Buggy Dog Bones/Drive Shaft w/Yoke .....	1	7.50	A-6210	4-40 x 3/8" Flat Head Socket .....	10	1.50
A-3083	Yoke & Screw for Dogbone/Drive Shaft .....	2	3.50	A-6212	4-40 x 1/8" Button Head .....	4	1.25
A-3119	Hydra-Drive Housing Set .....	1	14.95	A-6213	4-40 x 1/4" Flat Head Socket .....	6	1.25
A-3122	Hydra-Drive Friction Slipper Gear Plate .....	1	6.00	A-6215	#4 Narrow Washers .....	10	1.25
A-3123	Hydra-Drive Friction Slipper Pad .....	1	3.00	A-6220	4-40 x 1/2" Flat Head Socket .....	6	1.50
A-3124	Hydra-Drive Slipper Spring, Cup, Spacer & Washer .....	1	3.00	A-6223	4-40 x 1" Socket Head .....	6	2.00



## **The easy access modular rear end**

Features wide-based, extra-long and rigid suspension arms, strong hub carriers, and multi-adjustable bulk-head. The ultra-stiff components provide critical suspension alignment and maintain proper suspension geometry. This well engineered system offers easy access for routine service and quick adjustments.

A-6224	#4 Nylon Filler Screws & Washers for Hydra-Drive .....	6	2.00
A-6225	2-56 x 5/16" Button Head (Slipper, Wheel Disks) .....	10	2.00
A-6230	Shim Assortment - 3/16", 1/4", 1/2" .....	20	2.50
A-6303	10-32 Nylon Locking Nuts (4ea. Nylon & Steel) .....	8	1.50
A-6305	4-40 Locking Nuts Low Profile .....	10	3.50
A-6306	4-40 Aluminum Mini Nuts .....	10	3.50
A-6400	Pins, U-Joint .....	8	1.25
A-6401	Pins, Wheels & Gear .....	4	1.25
A-6903	3/16" x 3/8" Bearings .....	2	5.50
A-6905	3/16" x 5/16" Bearings (Slipper) .....	2	7.50
A-6907	5mm x 8mm Bearings (XX Trans) .....	2	6.50
A-6908	1/2" x 3/4" Bearings w/Teflon Seal (XX Trans) .....	2	13.50
A-6909	1/8" x 3/8" Bearings (XX Trans) .....	2	6.00
A-6911	3/16" x 5/16" Teflon Sealed Bearings .....	2	8.50
A-6912	3/32" x 3/16" Bearings for Steering (XX,XXT) .....	4	19.95



A-6918	3/16" x 3/8" Teflon Seals & Clips .....	16	5.00
A-6951	3/32" Carbide Diff Balls .....	12	10.95
A-7041	5 Spoke Front Wheel (XX) (Yellow) .....	2	6.00
A-7141	5 Spoke Rear Wheel (XX) (Yellow) .....	2	6.00
A-7202G	Front WIDE BODY Rib (Gold) w/Foam Liners .....	2	11.00
A-7367S	2.2 Rear IFMAR PIN (Silver) w/Foam Liners .....	2	12.00
A-8040	Double-X 'CR' Body .....	1	16.00
A-8102	Adjustable Wing Button Set .....	1	2.75
A-8107	Large 'V' Wing .....	1	2.50
A-8106	XX Wing Wire .....	1	1.25
A-8200	Body Clips .....	12	1.25
A-8311	Machine Cut XX Logo Sticker Set (Pink) .....	1	5.95
A-8312	Machine Cut XX Logo Sticker Set (Yellow) .....	1	5.95
A-8317	XX 'CR' Sticker Sheet .....	1	3.00
A-8320	Machine Cut 24" TEAM LOSI LOGO (White) .....	1	7.95

### **Exclusive Swing-Away front end**

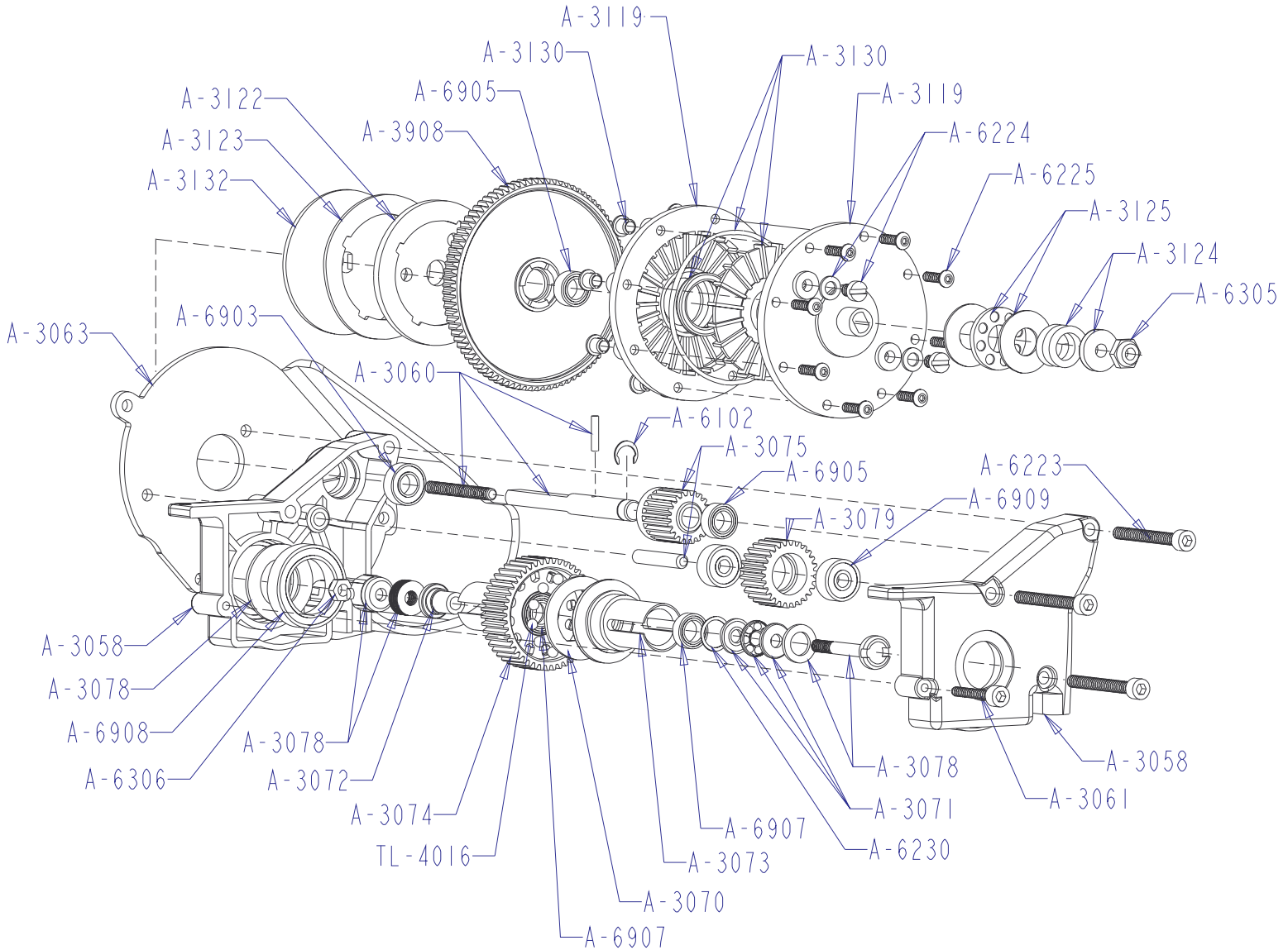
Construction features extreme rigidity and exceptionally easy access to the fully proportional bellcrank steering with helical design servo saver. Computer optimized ackerman and bump-steer provide positive steering for consistent performance.

# TEAM LOSI

## Racing



13848 Magnolia Ave., Chino, CA 91710  
 Phone: (909) 465-9400 / Fax: (909) 590-1496  
<http://www.teamlosi.com>



### Optional Parts For Double-X 'CR' Buggy

#### The Double-X "Laydown" transmission

includes carbide balls, precision-grooved thrust assembly, hardened and polished diff rings and Teflon sealed outdrive bearings. The low CG design and precise gear profiles provide quicker acceleration and handling. The patented Hydra-Drive® is included for the ultimate in power handling and traction control.

A-2113	'CR' Rear Pivot Block 2° .....	1	3.50
A-4140	Sway Bar Kit (XX,XXT) .....	4	9.95
A-9701	Graphite/Composite Front Arms (XX) .....	2	10.95
A-9802	'CR' Graphite/Composite Rear Arms (XX) .....	2	10.95
A-9813	Graphite/Composite Rear Shock Tower (XX) .....	1	9.95
A-9830	Graphite/Composite Rear Pivot Plate .....	1	6.50
A-9900	Graphite/Composite Chassis Brace Set .....	1	11.00
A-9907	Graphite/Composite Battery Hold-Down Strap Standard ...	1	5.00
A-9901	Graphite/Composite Short Chassis w/Braces .....	1	49.95
A-9902	Graphite/Composite Standard Chassis w/Braces .....	1	49.95
A-9920	Machined Lite Weight / Anodized Motor Plate .....	1	11.95
A-9930	Alum Gear/Slipper Shaft 2.19:1 Ratio Hard Coated .....	1	11.95