

BJ4 WORLDS EDITION SET-UP SHEET:

DRIVER Jason Ruona

DATE January 21-22 2006

TRACK/CITY Lake Park - Tampa, FL

EVENT 2006 Region 4 Championships

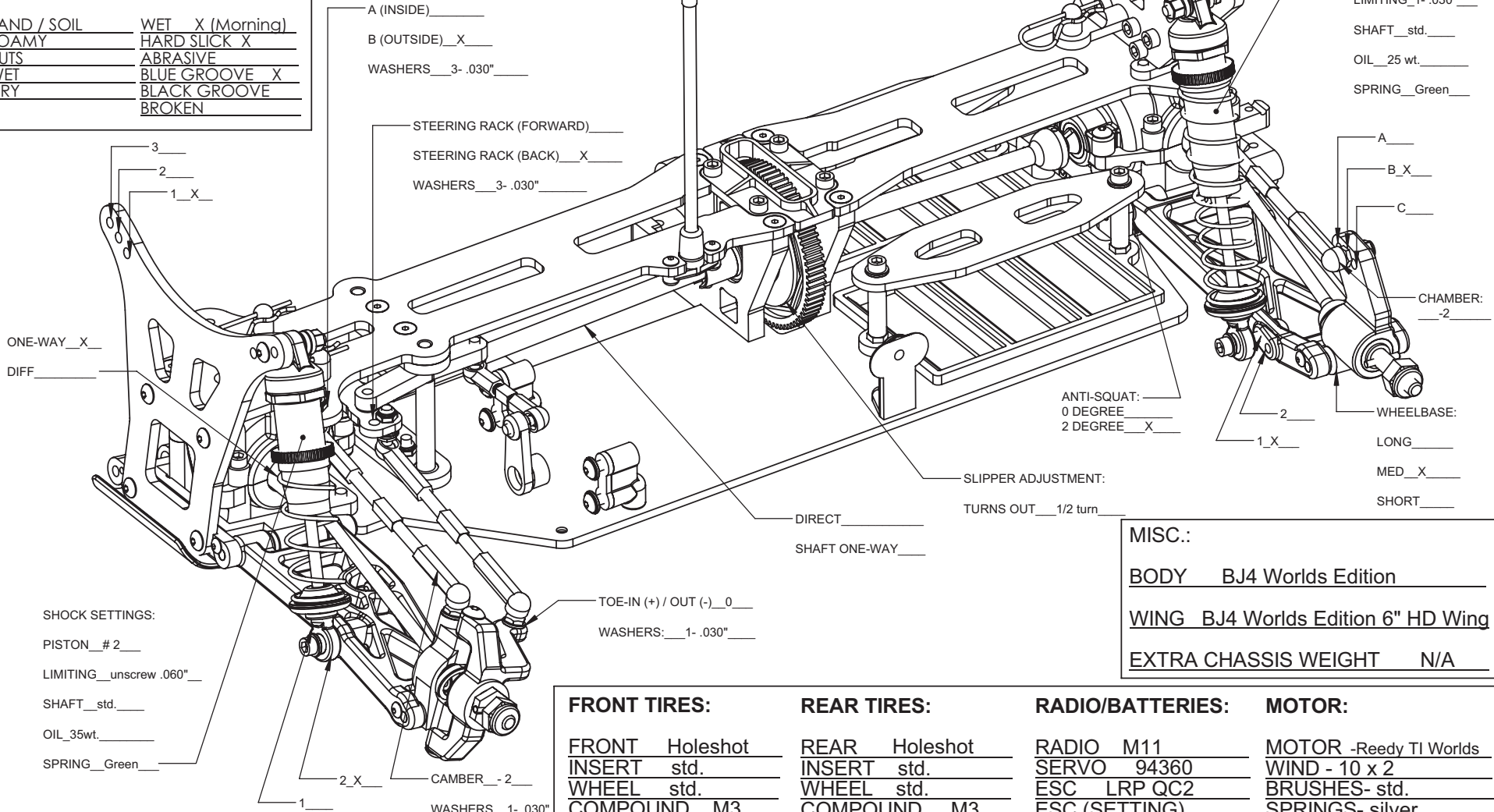
NOTES: RUNNING OPTIONAL REAR SWAY BAR .055" std. WIRE.
TRACK WAS ESPECIALLY LARGE 37-40 SECOND LAP TIMES WERE NORMAL.



TRACK CONDITIONS:

SOFT SURFACES: HARD SURFACES:

SAND / SOIL	WET <u>X</u> (Morning)
LOAMY	HARD SLICK <u>X</u>
RUTS	ABRASIVE
WET	BLUE GROOVE <u>X</u>
DRY	BLACK GROOVE
	BROKEN



MISC.:

BODY BJ4 Worlds Edition

WING BJ4 Worlds Edition 6" HD Wing

EXTRA CHASSIS WEIGHT N/A

FRONT TIRES:	REAR TIRES:	RADIO/BATTERIES:	MOTOR:
FRONT <u>Holeshot</u>	REAR <u>Holeshot</u>	RADIO <u>M11</u>	MOTOR <u>-Reedy TI Worlds</u>
INSERT <u>std.</u>	INSERT <u>std.</u>	SERVO <u>94360</u>	WIND <u>- 10 x 2</u>
WHEEL <u>std.</u>	WHEEL <u>std.</u>	ESC <u>LRP QC2</u>	BRUSHES- <u>std.</u>
COMPOUND <u>M3</u>	COMPOUND <u>M3</u>	ESC (SETTING)	SPRINGS- <u>silver</u>
ADDITIVE <u>n/a</u>	ADDITIVE <u>n/a</u>	BATTERIES- <u>Reedy 3700</u>	PINON/SPUR- <u>19x78</u>