



# D216 Pro Setup Sheet

Driver Ty Tessmann

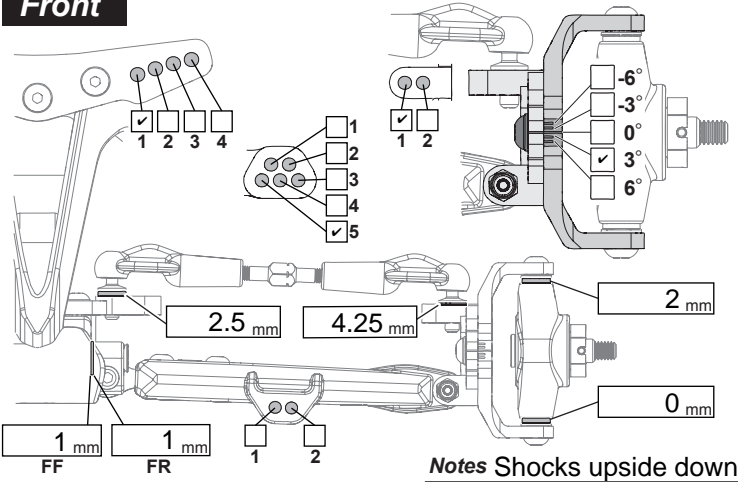
Date July 2016

Track Hot Rod Hobbies

Event Shootout

Track Condition Smooth, slightly bumpy, big jumps, medium bite

## Front



Ride Height 21 mm  
 Camber Angle -0.5°  
 Toe Angle 0°

Front Center Back

### Front Kick-Up

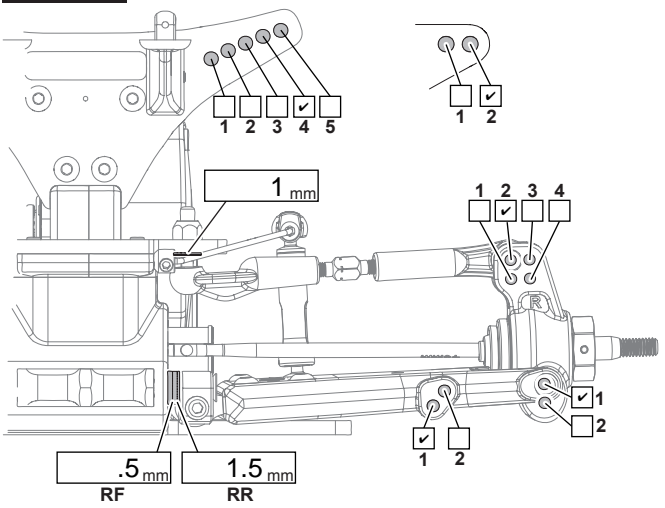
F/F	F/R	Kick-Up
•	•	22.5°
••	•	21.2°
•••	•	20.0°
•	••	23.8°
••	••	22.5°
•••	••	21.2°
•	•••	25.0°
••	•••	23.8°
•••	•••	22.5°

### Front Shocks

Oil Weight 35 losi<sub>wt</sub>  
 Piston 3x1.3  
 Spring HB grn  
 \*Shock Length 23 mm  
 Notes 3mm inside

Notes Shocks upside down

## Rear



Ride Height 21 mm  
 Camber Angle .5°  
 Toe Angle 3°  
 Sway Bar none

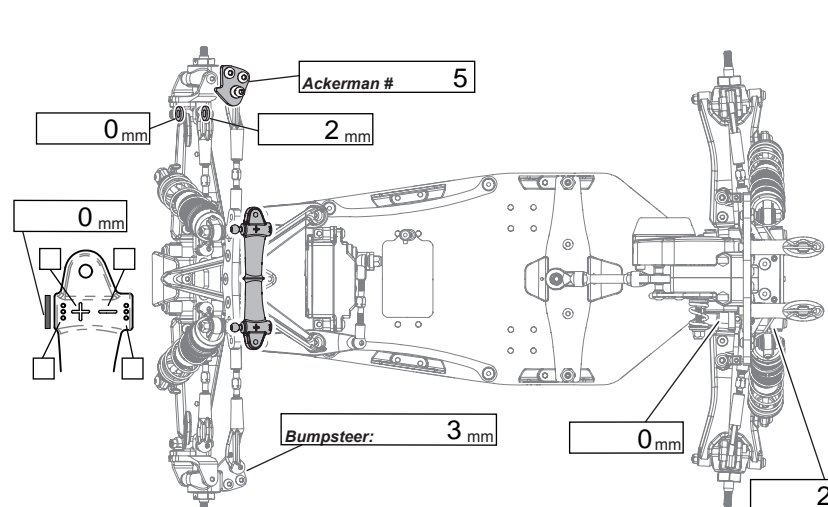
### Rear Anti-Squat

R/F	R/R	Anti-Squat
•	•	1.5°
••	•	0.5°
•••	•	-0.5°
•	••	3.0°
••	••	1.5°
•••	••	0.5°
•	•••	4.0°
••	•••	3.0°
•••	•••	1.5°

### Rear Shocks

Oil Weight 32.5 losi<sub>wt</sub>  
 Piston 4x1.35  
 Spring HB gold  
 \*Shock Length 29.5 mm  
 Notes 2mm inside

Notes shocks upside down



### Rear Toe-in

R/F	R/R	Toe-in
0.5mm	1.5mm	1.5°
0.5mm	2.0mm	2.0°
0.5mm	2.5mm	2.5°
0.5mm	3.0mm	3.0°

Differential  
 Gear  Oil Wt. 3k  
 Ball

Servo  
 Front  Rear

Wing Height  
 Low  Mid  High

Tires	Front	Rear
Tire	electron	electron
Insert	4wd front	stock

Battery orion 3800

Motor orion 6.6

Pinion 22 Spur 78

Body/Wing proline /

### Battery Position

<input type="checkbox"/> Inline	<input type="checkbox"/> •	<input type="checkbox"/> ••
<input checked="" type="checkbox"/> Sideways	<input type="checkbox"/> ••	<input checked="" type="checkbox"/> •••

Notes