

Driver **David Ronnefalk**

Date **6-8/1-2017**

Track **Odense, Denmark**

Event **DHI-CUP 2017**

Composition: Astro turf Clay Carpet Dirt Grass Wood

Traction: Low Medium High

Dry

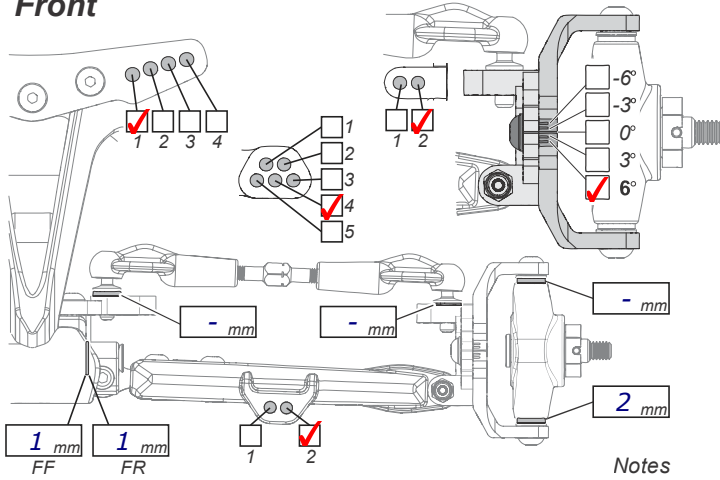
Track Condition

Other:

Surface: Bumpy Smooth

Wet

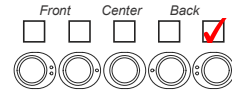
Front



Ride Height 15.5 mm

Camber Angle 1°

Toe Angle +0.5°



Front Kick-Up

F/F	F/R	Kick-Up
•	•	22.5°
••	•	21.2°
•••	•	20.0°
•	••	23.8°
••	••	22.5°
•••	••	21.2°
•	•••	25.0° <input checked="" type="checkbox"/>
••	•••	23.8°
•••	•••	22.5°

Front Shocks

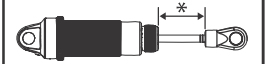
Oil Weight XTR 50 wt

Piston 2x1.6

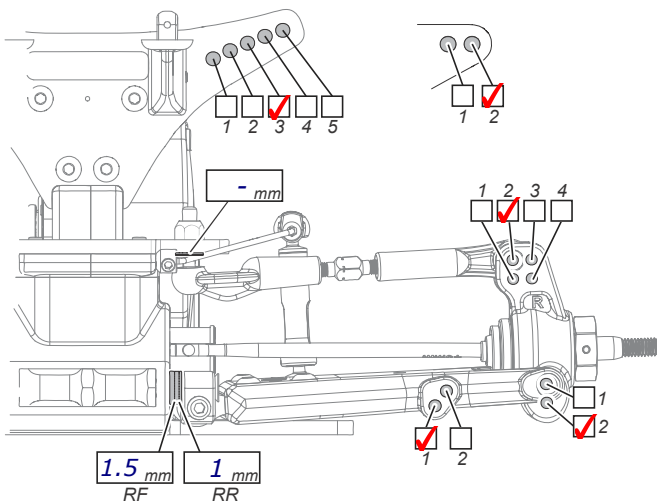
Spring HB Racing Red

*Shock Length - mm

Notes
2mm limiter inside, 2 O-rings limiter on the outside



Rear



Ride Height 15.5 mm

Camber Angle 1.5°

Toe Angle 0°

Sway Bar None

Rear Anti-Squat

R/F	R/R	Anti-Squat
•	•	1.5°
••	•	0.5°
•••	•	-0.5°
•	••	3.0°
••	••	1.5°
•••	••	0.5° <input checked="" type="checkbox"/>
•	•••	4.0°
••	•••	3.0°
•••	•••	1.5°

Rear Shocks

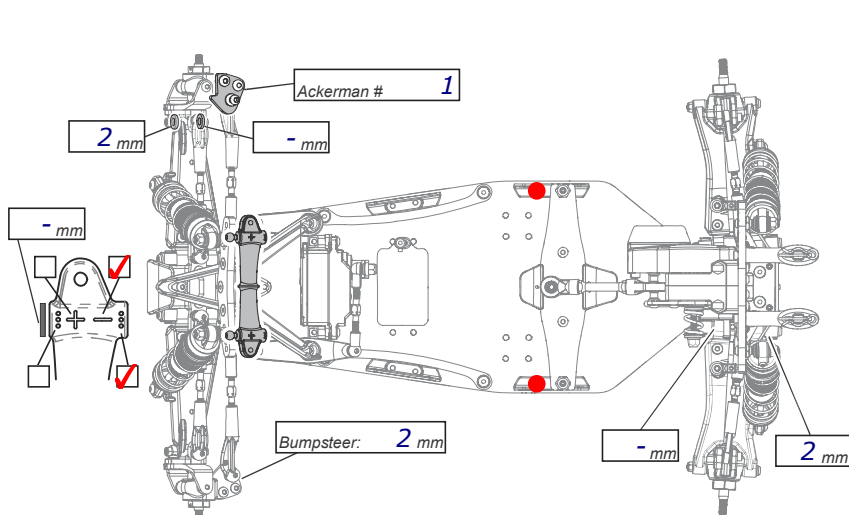
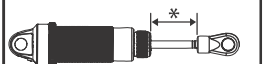
Oil Weight XTR 40 wt

Piston 2x1.7

Spring HB Racing Gold

*Shock Length - mm

Notes
No limiter. Spring cut at 8 full coils.



Rear Toe-in

R/F	R/R	Toe-in
0.5mm	1.5mm	1.5
0.5mm	2.0mm	2.0
0.5mm	2.5mm	2.5
0.5mm	3.0mm	3.0

Differential

Gear Oil Wt. 30k

Ball

Servo

Front Rear

Wing Height

Low Mid High

Tires	Front	Rear
Tire	<u>Swaggers</u>	<u>Pin Downs</u>
Insert	<u>None</u>	<u>JC Open Cell</u>
Notes		

Battery Team Orion 4500

Motor Team Orion 5.5 VST2 LW

Pinion 21 Spur STD

Body/Wing Jconcepts S2 / Jconcept

Battery Position

Inline

Sideways

Wheel axles level with chassi, this is the way I set the shock length. Shocks in the back in front of the tower with new hole drilled in the arm on the front.

Notes Arm in std position to keep the right dogbone sweep.