

Front Suspension:

Reset Forms

Ride Height:	25 mm (Body Off)
Camber:	-1
Toe:	0 (Tierod Gap = 41.6 mm)
Arm Type:	#71103 Flat, Standard
Tower Type:	#71115 Flat
Caster Block Insert:	5°
Steering Block:	4
Bulkhead Type:	#91656 Plastic
Kick-Up Angle:	25°
Wheel Hex:	#71111 8.5 mm Steel
Notes:	#1366 FT Aluminum Servo Horn, 25T #91667 Plastic Steering Rack #91668 Aluminum Steering Bellcranks

Anti Roll Bar:

White (1.2mm)

Gray (1.3mm)

Blue (1.4mm)

Other:

Bump Steer Spacing: 1 mm

Axle Height:

+3

+2

+1

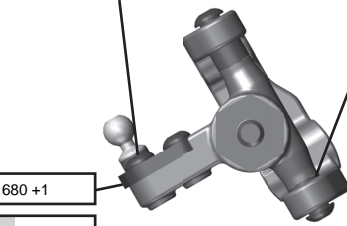
0

Ball Stud Spacing: 2 mm

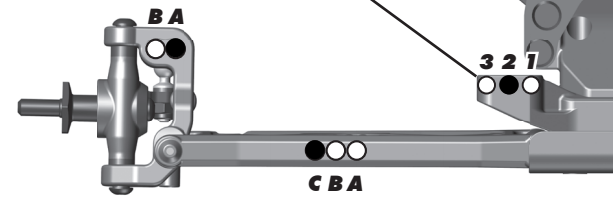
Steering Plate: #91680 +1

Steering Stop Spacing: 0 mm

Caster Block Spacing: 1 mm



Ball Stud Spacing: 1 mm



Rear Suspension:

Ride Height:	24 mm (Body Off)
Camber:	-1
Arm Type:	#71105 Standard
Tower Type:	#71116 Standard
Wheel Hex:	#91610 FT 7.0 mm
Hub Spacing:	Forward <input type="checkbox"/> Middle <input checked="" type="checkbox"/> Back <input type="checkbox"/>
Shock Mounting Position:	Front of Arm <input checked="" type="checkbox"/> Rear of Arm <input type="checkbox"/>
Notes:	

Anti Roll Bar:

White (1.1mm)

Gray (1.2mm)

Blue (1.3mm)

Other:

Rear Hub Link Setting:

Plastic Hub Aluminum Hub Ball Stud Spacing: _____

Up Down

C Mount Inserts: 1° 0.5°

Aluminum Brass

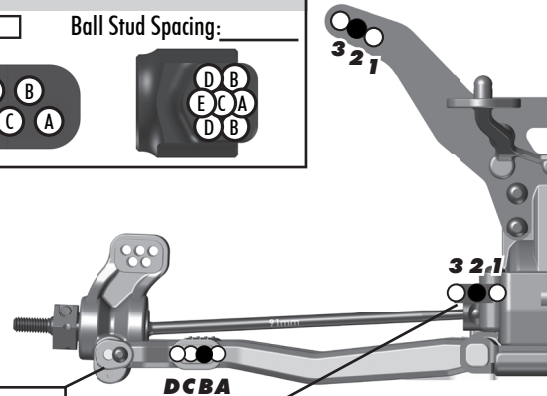
D Mount Inserts: 1° 0.5°

Aluminum Brass

Hub Insert:

+3 +2 +1 0

Ball Stud Spacing: 3 mm



Electronics:

Radio:	Sanwa M12S	Servo:	#27101 Reedy RT1508
EPA: Throttle:	100 %	Brake:	82 %
ESC:	#27004 Reedy Blackbox 510R		
ESC Settings:	Blinky - Punch Level=10, Drive Freq=6khz, Dead Band =6%		
Motor:	#27402 Reedy S-Plus		
Wind:	17.5	Timing:	36°
Pinion:	26	Spur:	78
Battery:	#27322 Reedy Zappers SG 4800 mAh 110C		
Battery Position:	3F		

Drivetrains:

Transmission: Laydown:

3 Gear: Layback:

4 Gear: Stand Up:

Differential: Ball Diff:

Height: 1 Gear Diff:

Notes: #6584 Ceramic Diff Balls

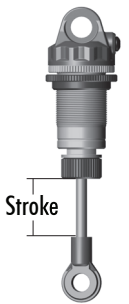
Slipper Clutches:

Type: Team Associated

of Pads: 2 x #91197 LCF

Shocks:

	Front	Rear
Piston:	2 x 1.6 Flat Machined	2 x 1.7 Flat Machined
Fluid:	35 wt	32.5 wt
Spring:	#91835 Red	#91839 Gray
Limiters:	1	0
Stroke:	27 mm	35 mm
Eyelet Length:	Long	Short
Cup Offset:	9 mm	9 mm
Notes:	#91494 Machined Shock Spacers	



Track Info:

Size: Small Medium Large Extra Large

Surface: Dirt Carpet Astroturf Multi Surface

Traction: Low Medium High Very High

Moisture: Dry Damp Wet

Condition: Indoor Outdoor Dusty Hard Packed

Bumpy Grooved Smooth Loamy

Temperature: Ambient: 60F Track: 60F

Notes:

Tires:

Front Tires: JConcepts Dirt Webs

Front Compound: Gold

Front Insert: JConcepts Dirt Tech

Rear Tires: JConcepts Dirt Webs

Rear Compound: Gold

Rear Insert: JConcepts Dirt Tech

Wheel (F/R): #7852 Team Associated

Notes:

Body, Wing, Weight:

Body: Team Associated Kit

Team Associated Kit Spoiler

Servo Weights:

None Aluminum Steel Other

Electronic Weights:

None Aluminum Steel Other

Total Vehicle Weight:

Vehicle Comments:

Notes: #91577 & #91579 Fox Shock Bodies; #91620 & 91624 Chrome Shock Shafts;