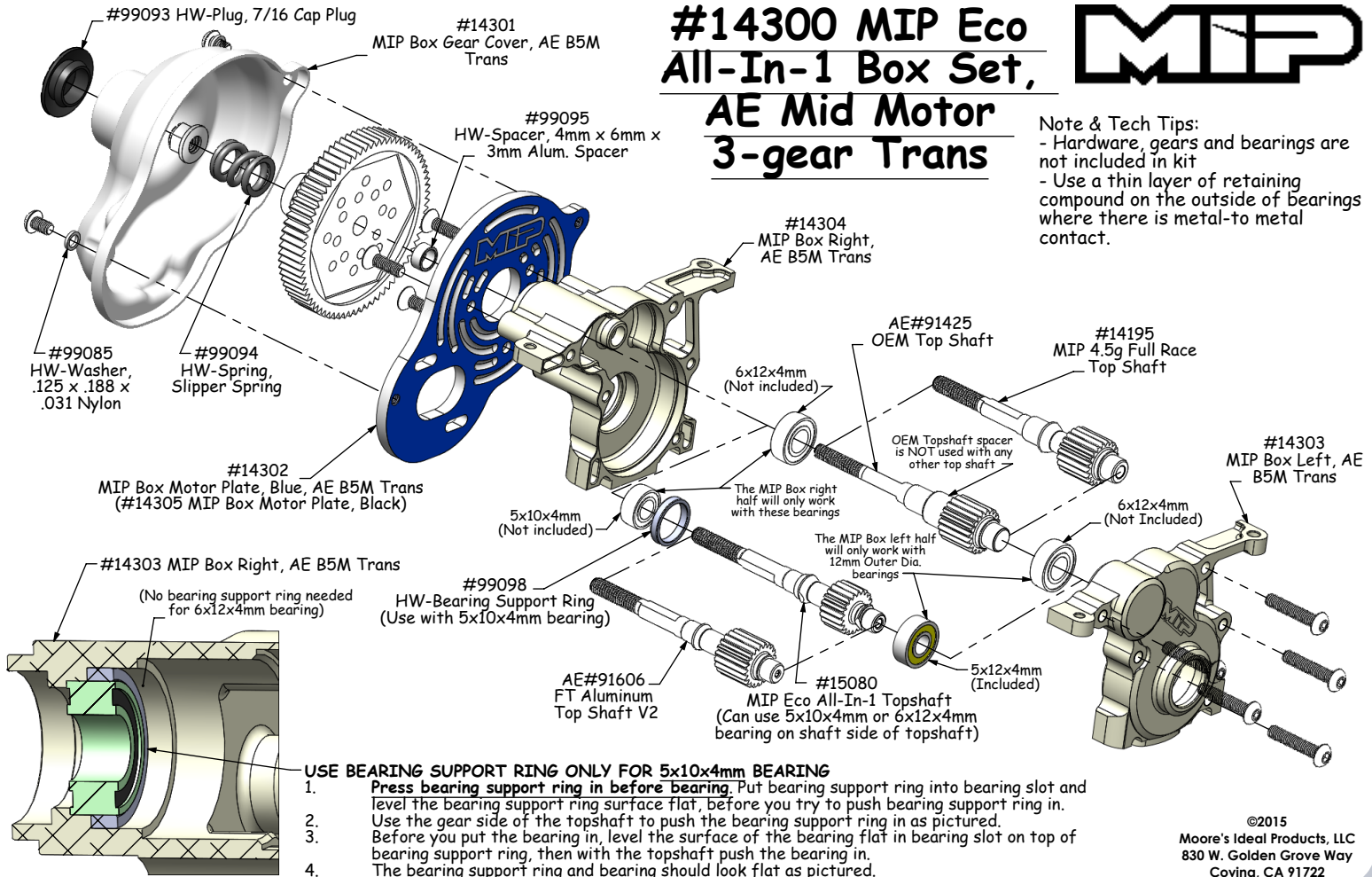


#14300 MIP Eco All-In-1 Box Set, AE Mid Motor 3-gear Trans



Note & Tech Tips:

- Hardware, gears and bearings are not included in kit
- Use a thin layer of retaining compound on the outside of bearings where there is metal-to-metal contact.

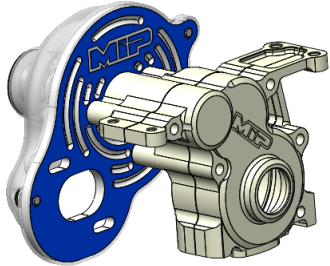


©2015

Moore's Ideal Products, LLC
830 W. Golden Grove Way
Covina, CA 91722

MIP Eco All-In-1 Box Set, AE Trans

Competitive Advantages:

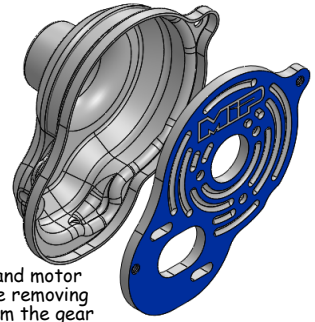


- o Aluminum construct acts as a giant heat sink which will cool the motor offering more consistent power due to reduced fade (less heat more power).
- o Aluminum construct will offer stiffer bracing over plastic OEM case.
- o Polycarbonate gear cover removes half the weight compared to the stock "molded" gear cover.
- o Machined cases offer higher precision, which optimizes gear mesh and efficiency when compared to molded plastic cases.
- o Less drag than a four gear transmission (One less idler gear).
- o Aluminum 3-gear MIP Transmission package will be relatively the same overall weight as OEM 4-gear transmission. This will keep the weight distribution the same as what the car was designed to have.
- o Motor offset 3mm to the right to optimize left to right weight distribution and balance. (Small spacer and new spring provided to accommodate this feature)
- o AE & MIP Top Shaft Compatible
- o 7075 Aluminum
- o Made 100% in the USA

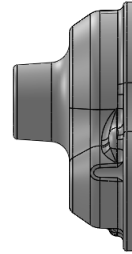
MIP P/N: 01-482

How to cut the MIP Gear Cover

1. For best results place gear cover over motor plate before cutting.

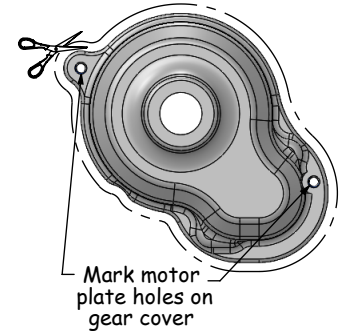


2. Hold gear cover and motor plate together while removing excess material from the gear cover



Cut the gear cover to align with the edge of the motor plate

3. Before removing motor plate, mark the screw holes to ream out.



4. Remove plastic film.

Tech Tip:

1. Gear cover can be painted from the inside with any hobby paint used to paint your body.
2. Always use Thread Lock on metal-to-metal screws!

©2015
Moore's Ideal Products, LLC
830 W. Golden Grove Way
Covina, CA 91722