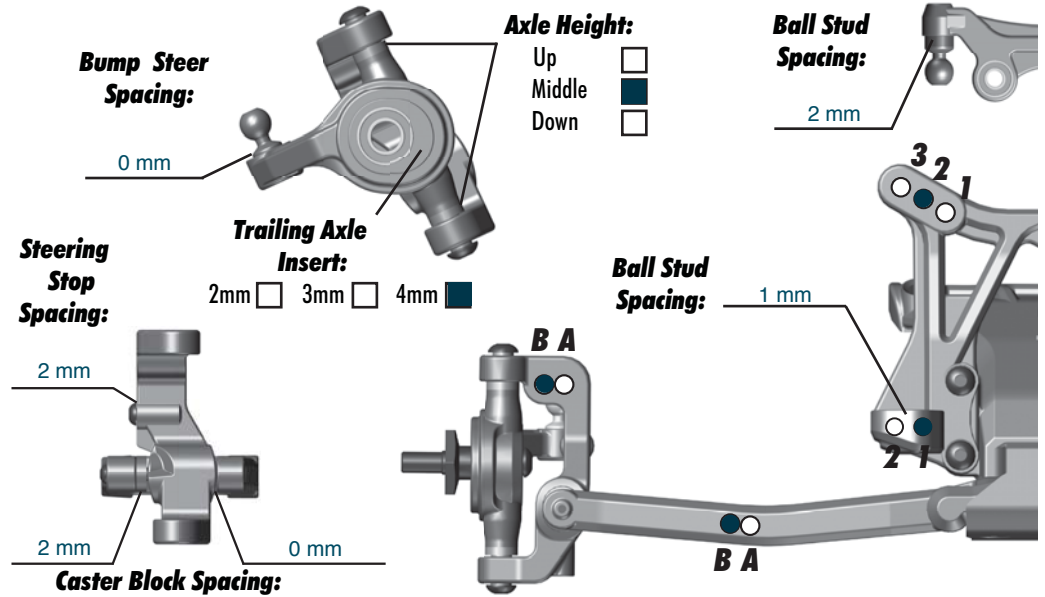


FRONT SUSPENSION:

Camber: -1 °
Total Toe: n/a °
Ride Height: 20mm
Arm Type: flat hard
Tower Type: flat hard
Caster Block Insert: 0 °
Kick-Up Angle: 25 °
Wheel Hex: 12mm ultra hex

Notes: Additional weight added to front end:
 - brass front bulkhead 45 grams
 - plus 110 grams
 - total 155 grams added

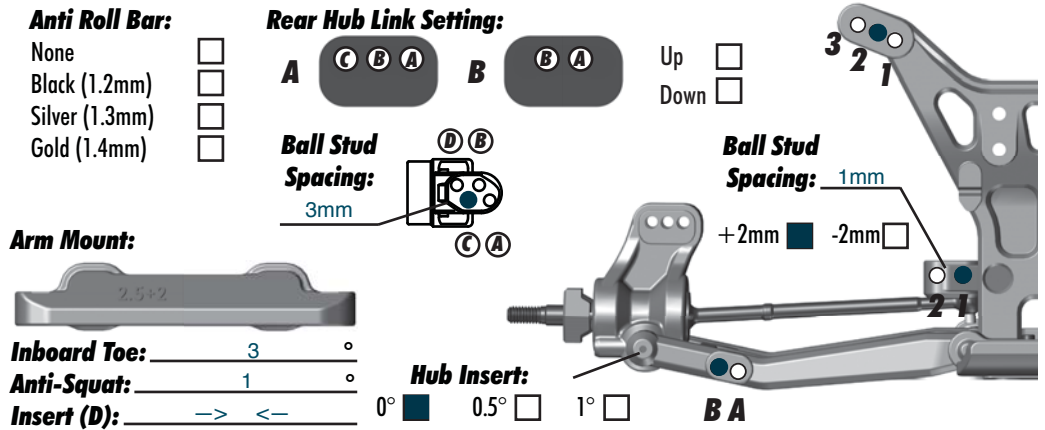
Jconcepts front brace
 Jconcepts dirt turnbuckles
 Jconcepts steering rack
 Jconcepts steering bell-cranks
 Jconcepts titanium knurl tip front



REAR SUSPENSION:

Camber: -1 °
Ride Height: 20mm
Wheel Hex: 12mm ultra hex
Hub Spacing:
 Forward Middle Back

Notes: Hard arms and tower
 Jconcepts 4 hole ball-stud mount
 Jconcepts aluminum wing mounts
 Jconcepts dirt turnbuckles



ELECTRONICS:

Radio: _____ **Servo:** _____
EPA: Throttle: _____ % **Brake:** _____ %
ESC: _____
ESC Settings: _____
Motor: _____
Wind: _____ **Timing:** _____
Pinion: _____ **Spur:** _____
Battery: _____
Battery Position: _____

DRIVETRAIN:

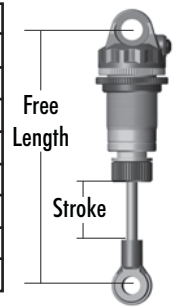
Differential: Ball Gear
Gearbox: 3 Gears 4 Gears
Notes: _____

SLIPPER CLUTCH:

Type: Associated
of Pads: 2
Notes: Vented slipper hub

SHOCKS:

	Front	Rear
Piston:	3x1.4	3x1.4
Oil:	30wt	30wt
Spring:	white	white
Limiters:	2	2
Cup Offset:	5mm	5mm
Stroke:	21.5	28.5
Free Length:	n/a	n/a
Notes:	x-rings, kashima bodies	



TRACK INFO:

Size: Small Medium Large Extra Large
Surfaces: Dirt Carpet Astroturf Multi Surface
Traction: Low Medium High Very High
Moisture: Dry Damp Wet
Condition: Indoor Outdoor Dusty Hard Packed
 Bumpy Grooved Smooth Loamy

Temperature: Ambient: _____ Track: _____
Notes: _____

TIRES:

jconcepts smoothies :F - Tires - R: jconcepts smoothies
gold :F - Compound - R: gold
dirt-tech :F - Insert - R: dirt-tech
60mm bullets :F - Wheel - R: 60mm bullets
 :F - Notes - R: _____

BODY & WING:

Body: Jconcepts Silencer
Wing: Jconcepts
Wing Angle: 0° 3° 6°
Notes: Lowrid3r wing mounts

RACE RESULTS:

Qualify: _____ **Main:** _____
Finish: _____ **TQ:**

VEHICLE COMMENTS:

Weight distribution:
 front: 45 rear: 55 front:790 rear: 988
 left: 50 right: 50 left: 897 right: 881

*additional 155 grams added to the front