

GT X '016
MADE IN ITALY

**1/8 SCALE ON ROAD
NITRO RACING CAR**



INSTRUCTION MANUAL





INTRODUCTION

GTX is a new generation high quality 1/8 scale nitro onroad car.
GTX is supplied in a box equipped with Instruction Manual.
Its use is intended for more than 16 years old persons with experience on rc model car field.
Children and all the persons without this requirement MUST have direct supervision of a knowledgeable adult responsible.

SAFETY PRECAUTIONS

Instruction Manual MUST be read and fully understood before to start building and operating functions.
Always keep Instruction Manual in safety place, ready to be consulted for any reference you need.
Use only original WRC spare parts.

GENERAL INFORMATION

Assemble the kit only away from the reach of children.
Follow the building and operating instructions using the utmost care.
Don't put any part of your body inside rotating and moving elements as this may cause damage or serious injury.
Check and clean the model before putting it away.
Don't use your model car in public places or in roads and areas where it could generate conflict with person or vehicular traffic.
The model car is controlled by radio: you MUST put great care to avoid loss of radio control always keeping a safety margin all around your model in order to prevent any collision.
Operating frequency: check and be sure it is clear and not shared with anybody at same time; it could cause loss of control of the RC model.
Always turn on your transmitter before you turn on the receiver in the car and always turn off the receiver before you turn off your transmitter.
Keep the wheels of the model off the ground when checking the operation of the radio equipment.
Disconnect the battery pack before storing your model.

WARRANTY

WRC guarantees this model kit to be free from defects in both material and workmanship within 30 days of purchase.
The total monetary value under warranty will in no case exceed the cost of the original kit purchased.
This warranty doesn't cover any components damaged by use or modification or as result of wear.
Part or parts missing from this kit must be reported within 30 days of purchase.
No part or parts will be sent under warranty without proof of purchase.
If you find a defective or missing part, contact the local distributor.
Customer service and support will be provided through local hobby store.
No warranties are expressed or implied that cover damage caused by what is considered normal use or cover or imply how long any model cars' components or electric components will last before requiring replacement.
Due to the high performance level of this model car you will need to periodically maintain and replace consumable components; any and all warranty coverage will not cover replacement of any part or component damaged by neglect, abuse or improper or unreasonable use.
This includes but is not limited to damage from crashing, excessive moisture, improper use or no maintenance or user modifications which compromise the integrity of components.
Warranty will not cover components that are considered consumable on RC model car.
WRC doesn't pay nor refund on any component sent from WRC or its distributor for warranty.
WRC reserves the right to make final determination of the warranty status of any component or part
Use only original WRC spare part:

CUSTOMER SUPPORT

Please don't hesitate to contact WRC support at info@wrc-racing.com for any problem or question.
Also kindly visit our website www.wrc-racing.com to find last updates, set-up information, option parts and other information.

W.R.C. world racing car s.r.l.

Via Meucci, 23/B
36040 Brendola (VI)

ITALY

Phone: 0039 0 444 401138
fax: 0039 0 444 401139
E-mail: info@wrc-racing.com
Website: www.wrc-racing.com



TECHNICAL INFORMATION

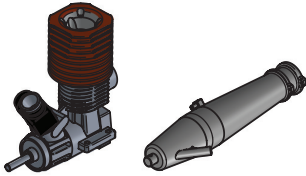
- BODY: PROTOTYPE MODEL (NOT INCLUDED)
- ADJUSTABLE FRONT TOE, CAMBER AND CASTER
- ADJUSTABLE REAR TOE AND CAMBER
- BUMPER /FRONT BACKSTOP
- ALUMINIUM CHASSIS
- FULL BALL BEARING
- CARBON RADIO PLATE
- TRANSMISSION: TRIPLE BELT 4WD
- FRONT DIFFERENTIAL: ONE-WAY
- REAR DIFFERENTIAL: SOLID AXLE
- FRONT AND REAR ADJUSTABLE ANTI-ROLL BARS
- PIVOT BALL SUSPENSIONS

TECHNICAL DATA

- LENGTH435 MM.
- WIDTH260 MM.
- WHEEL BASEadjustable 294-298 MM.
- WEIGHT CHASSIS.....2080 GR.

REQUIRED BUT NOT INCLUDED IN THE KIT

ADDITIONAL ITEMS NEEDED FOR COMPLETION



ENGINE AND MUFFLER



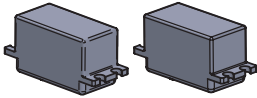
TRANSMITTER



RECEIVER



LEXAN BODY



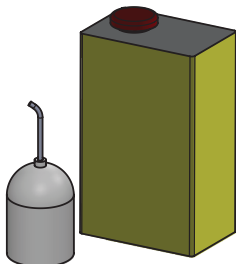
2 LOW PROFILE STEERING SERVO



AA ALKALINE BATTERIES
FOR TRANSMITTER
AND RECEIVER



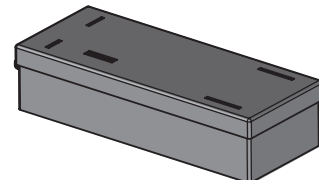
WHEEL - TYRES - INSERTS



FUEL AND FUEL PUMP



POCKET BOOSTER



STARTER

TOOLS REQUIRED

THESE TOOLS ARE NOT INCLUDED IN THE KIT BUT ARE REQUIRED FOR PROPER ASSEMBLY



ALLEN:
1.5 MM.
2.0 MM.
2.5 MM.
3.0 MM.



RING PLIERS



SIDE CUTTER

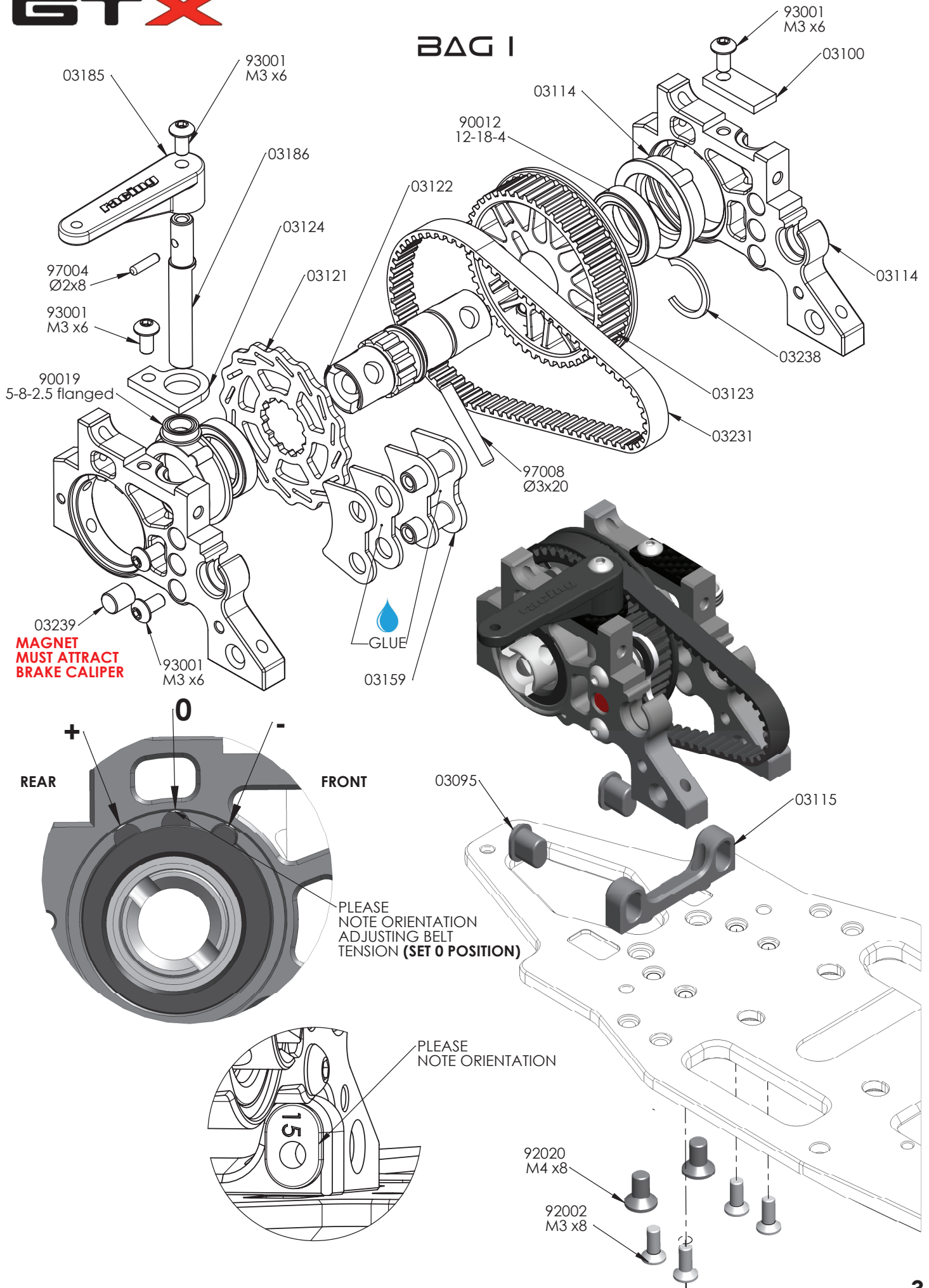


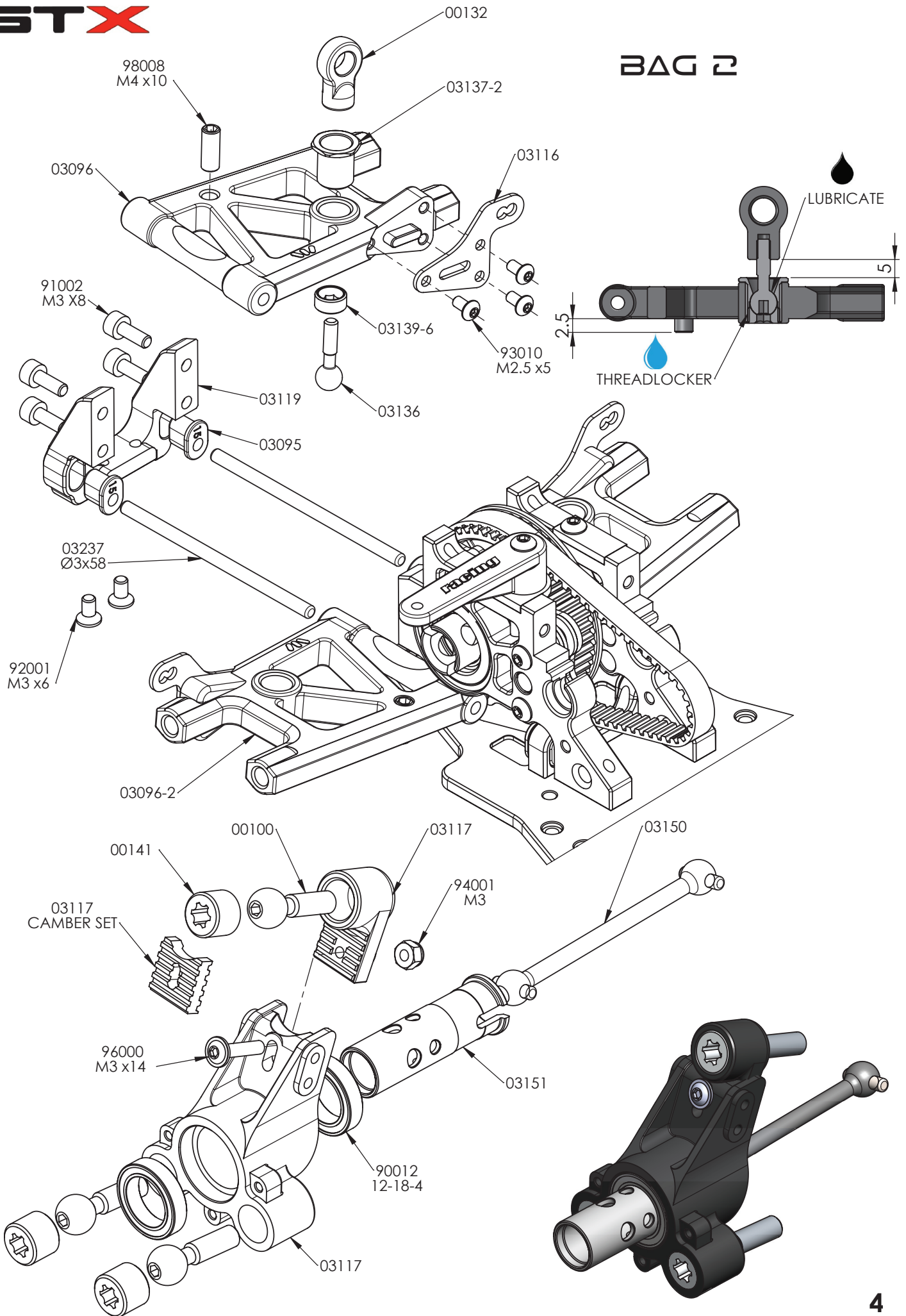
SCISSORS

NOTICE:

THE FOLLOWING ITEMS ARE NEEDED FOR COMPLETION OF THE GTX; THEY ARE NOT INCLUDED IN THIS KIT (UNLESS NOTED) AND SHOULD BE OBTAINED FROM YOUR LOCAL HOBBY SHOP.
BE SURE TO READ THE INSTRUCTION COMPLETELY PRIOR TO ASSEMBLY

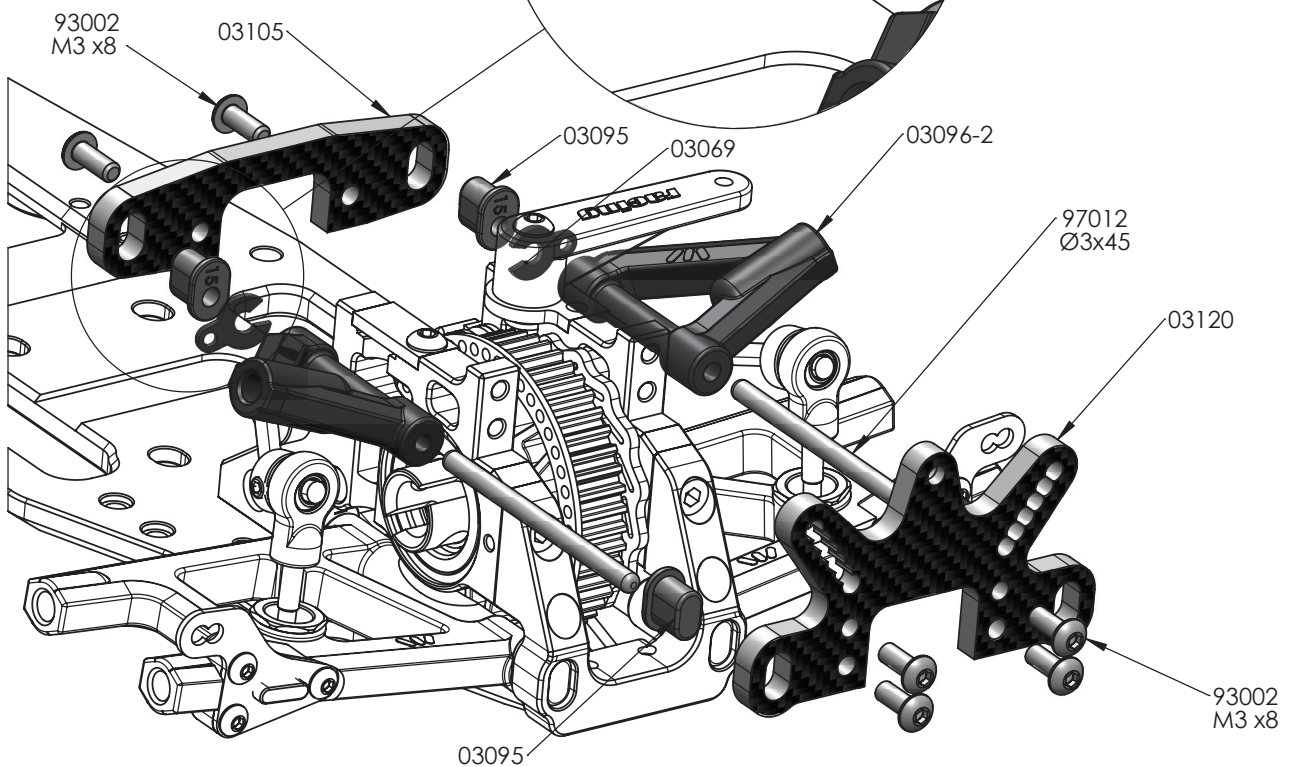
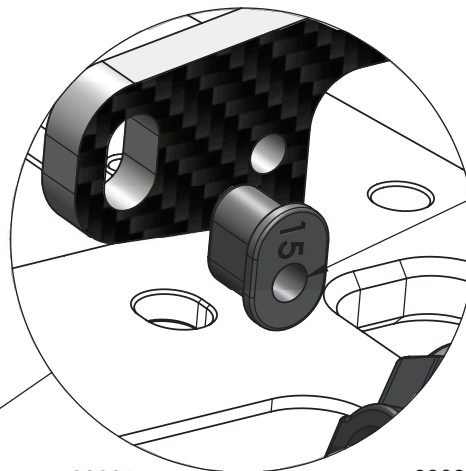
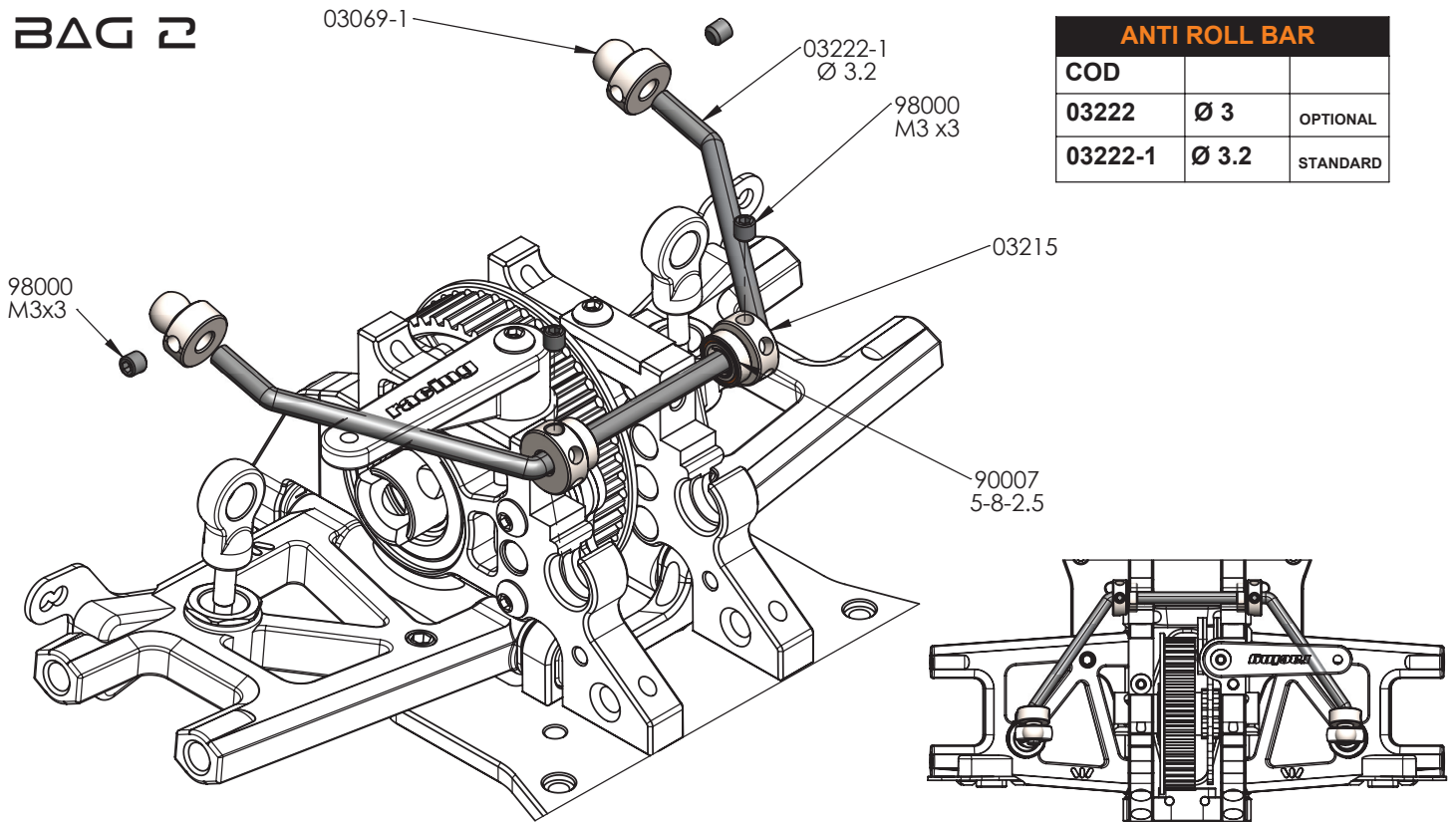
BAG 1

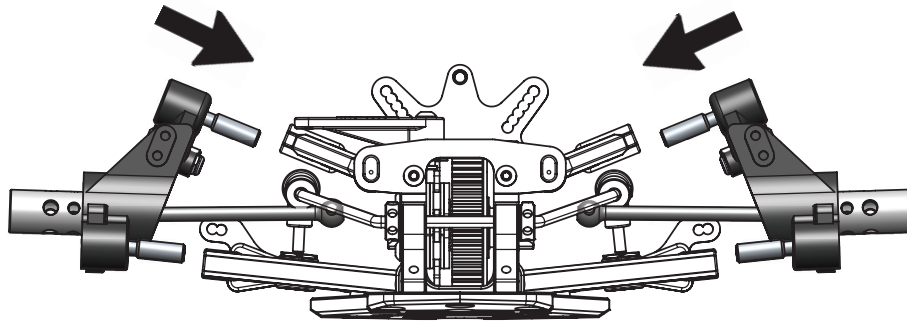




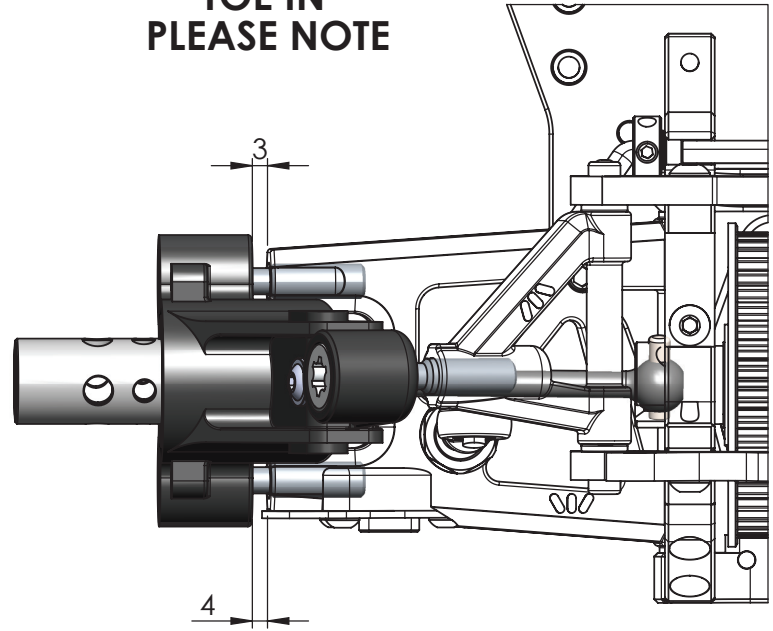
ANTI ROLL BAR

ANTI ROLL BAR		
COD		
03222	Ø 3	OPTIONAL
03222-1	Ø 3.2	STANDARD

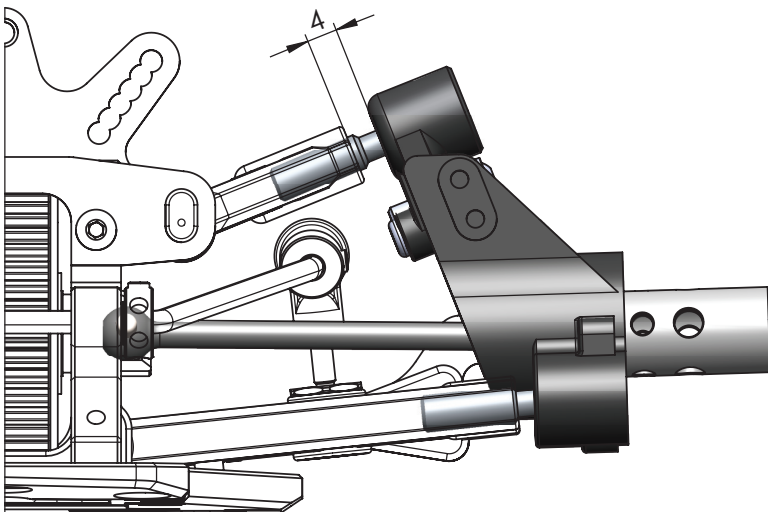


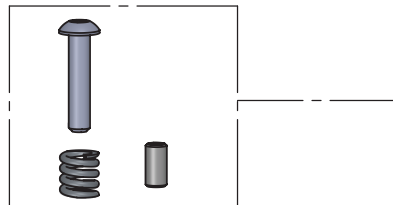
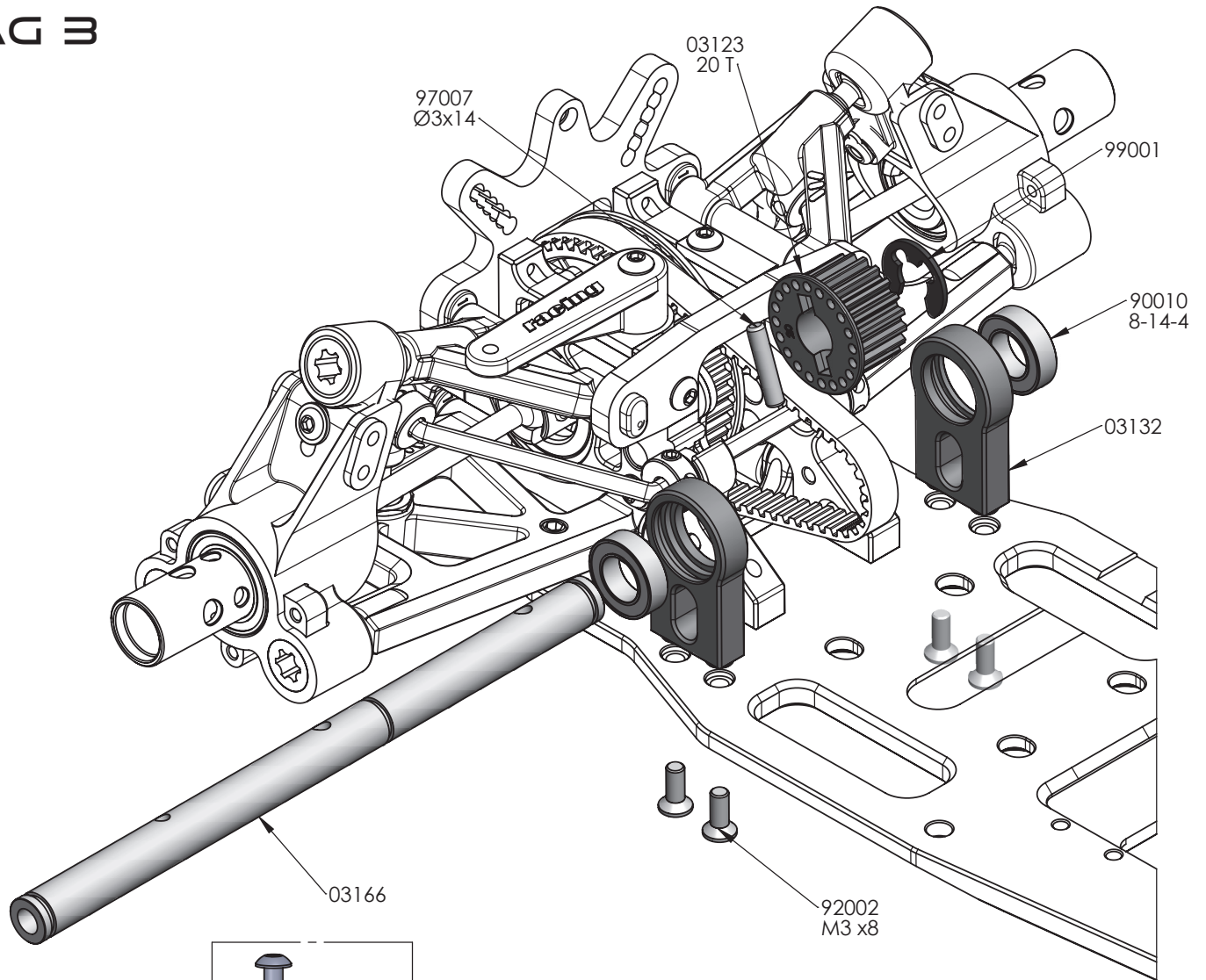


**TOE IN
PLEASE NOTE**

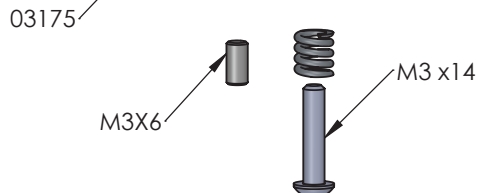
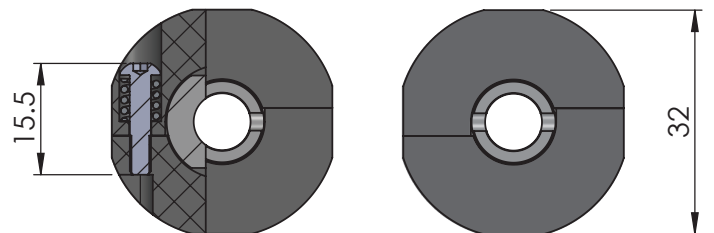
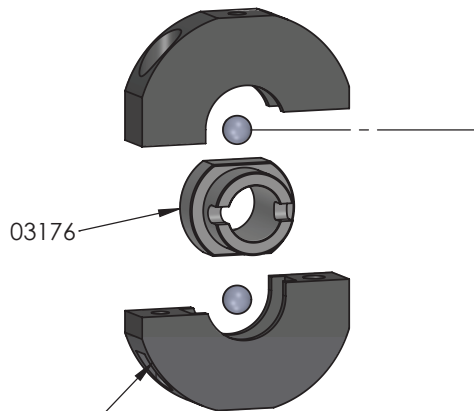


**SET
REAR CAMBER**

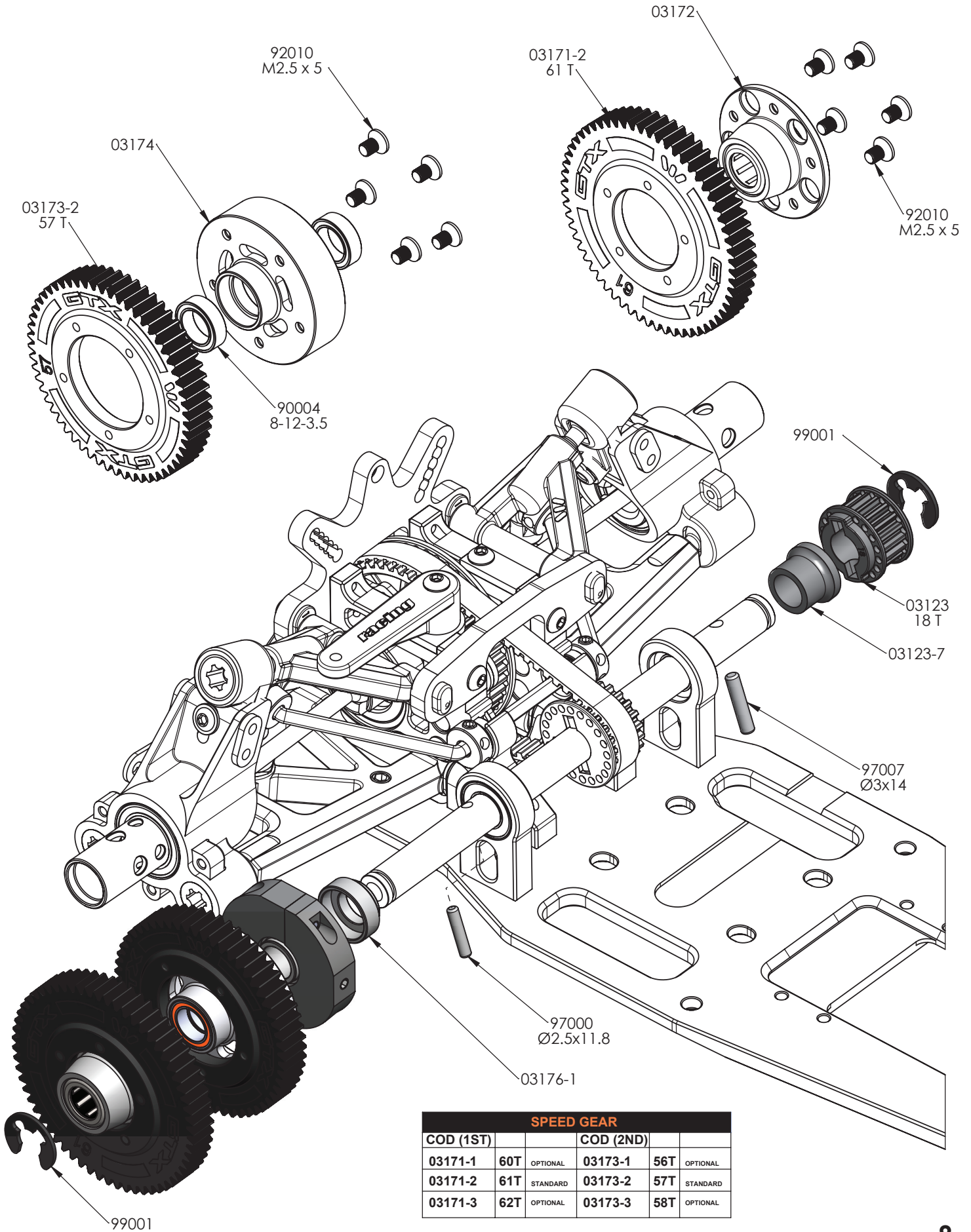




03241

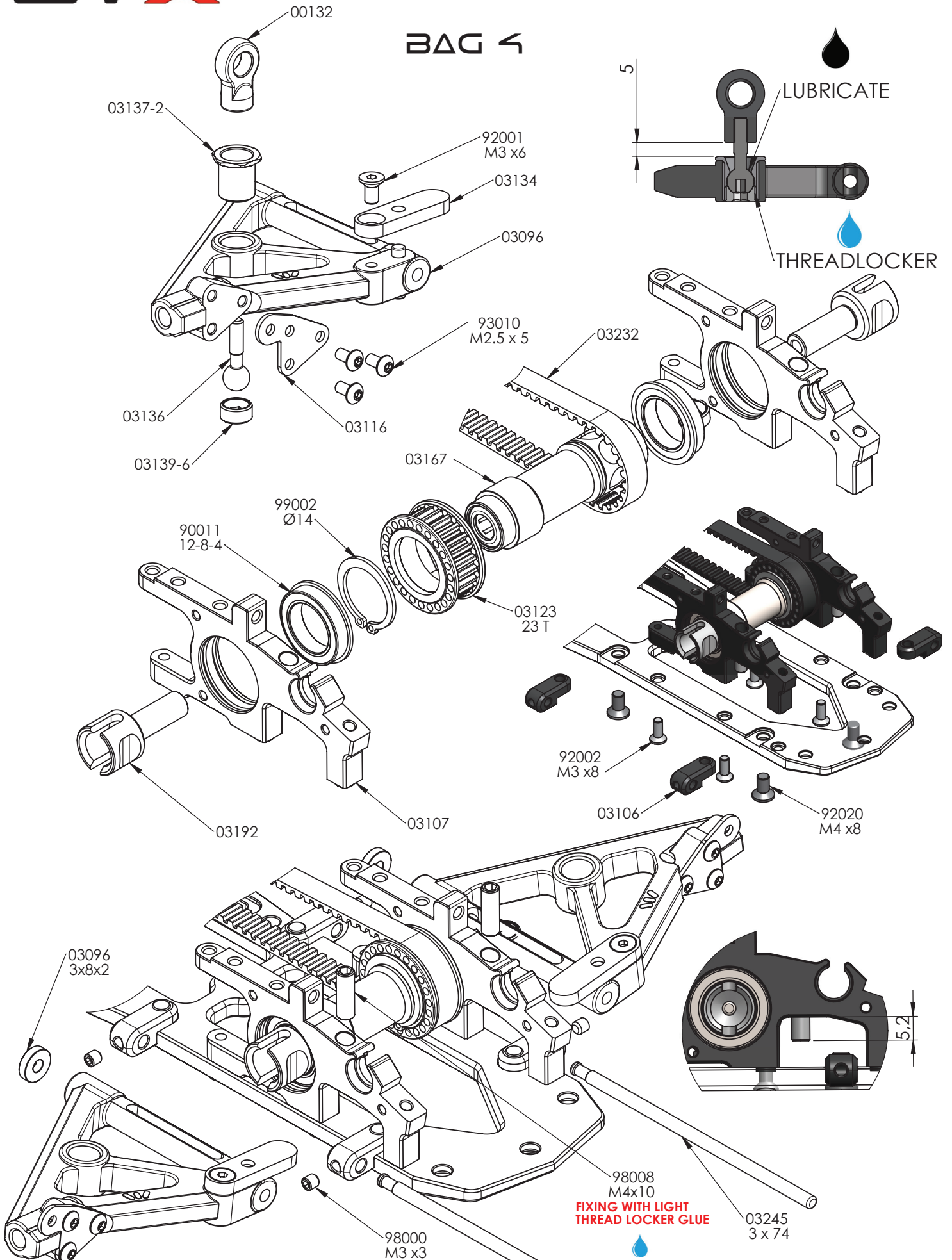


CLUTCH ADJUST

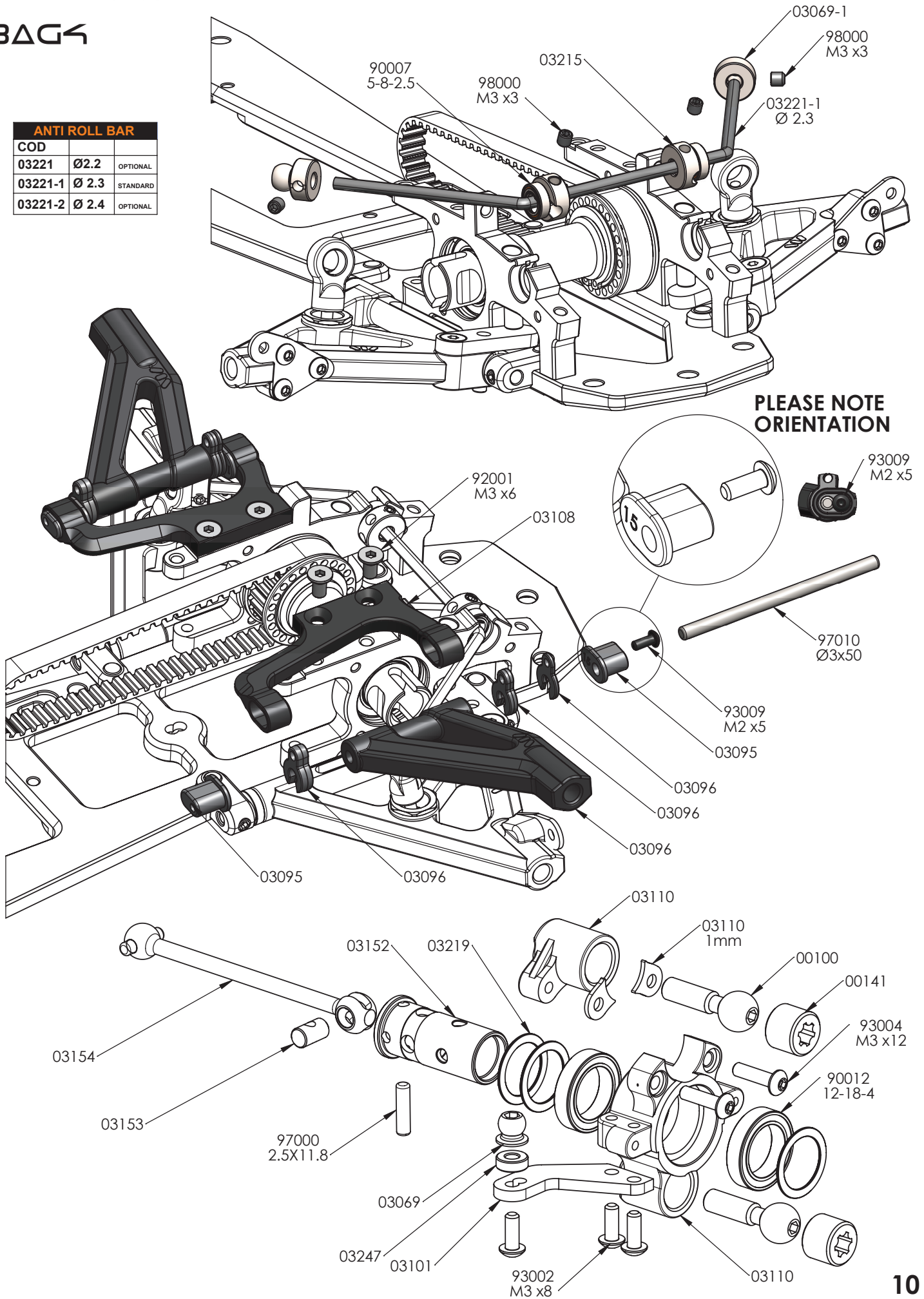


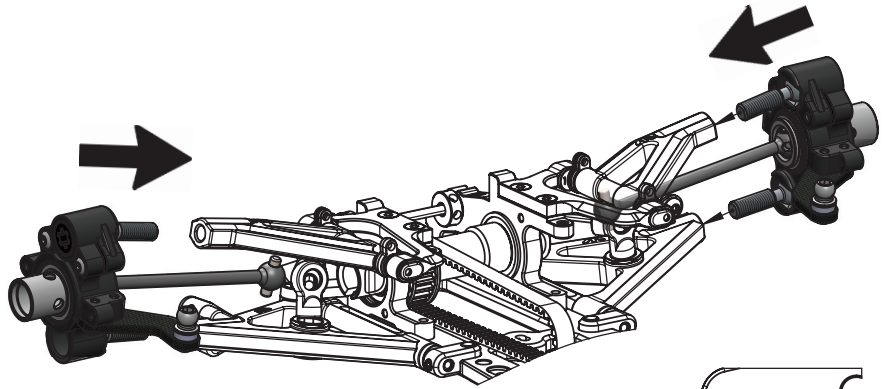
SPEED GEAR					
COD (1ST)			COD (2ND)		
03171-1	60T	OPTIONAL	03173-1	56T	OPTIONAL
03171-2	61T	STANDARD	03173-2	57T	STANDARD
03171-3	62T	OPTIONAL	03173-3	58T	OPTIONAL

BAG 4

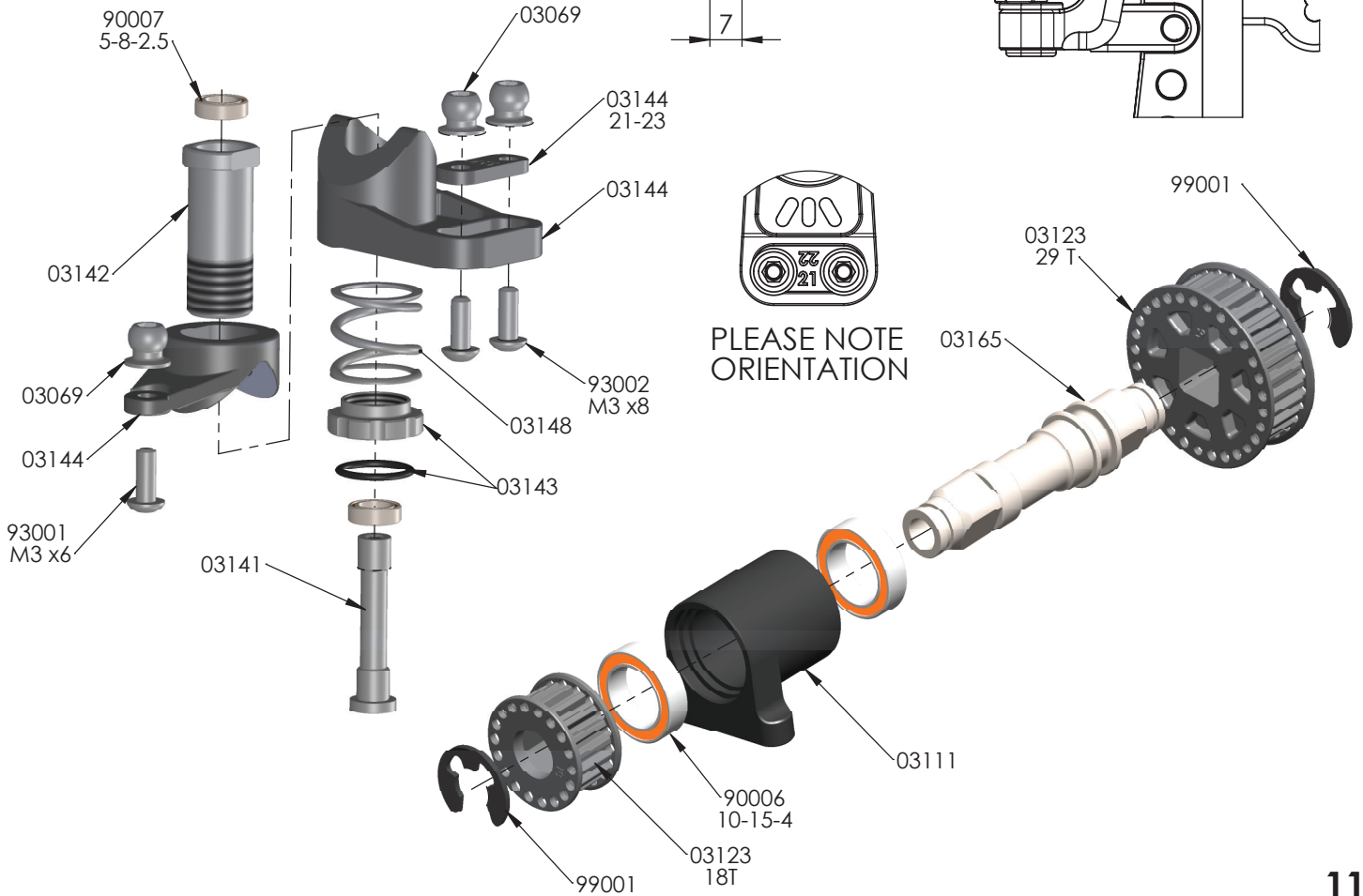
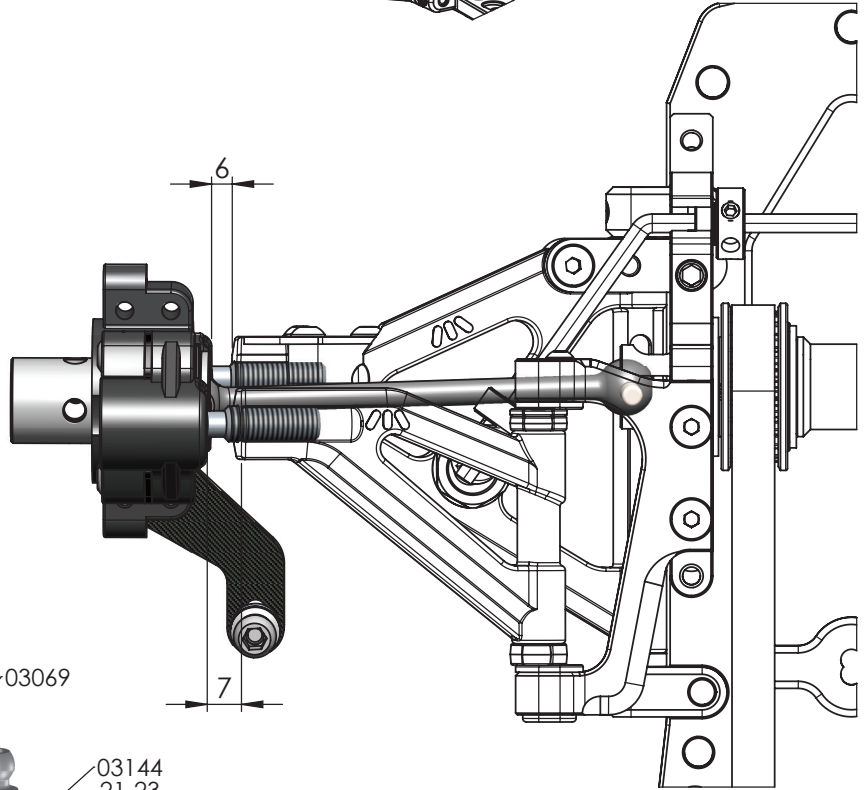


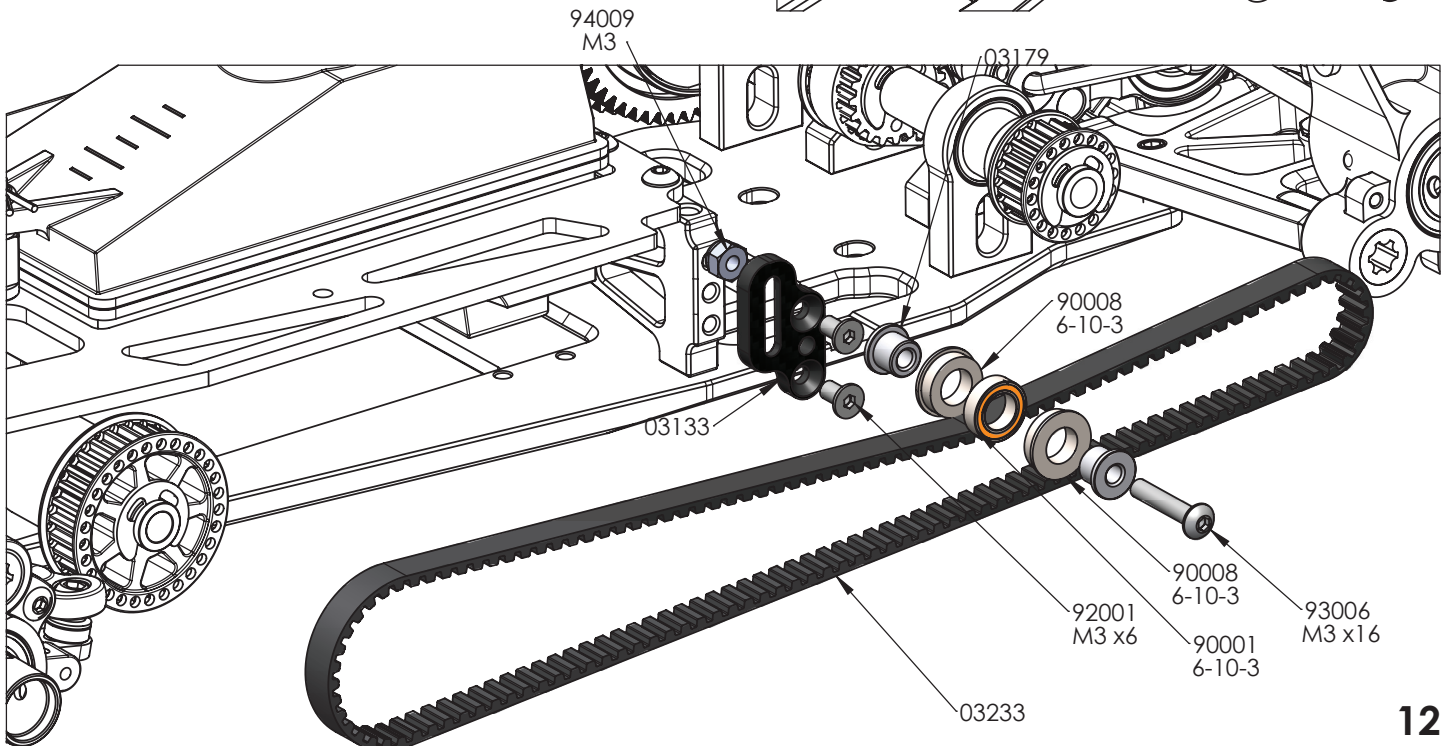
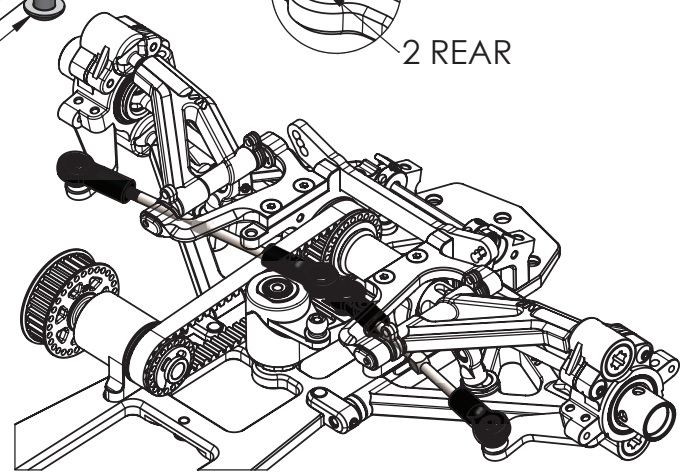
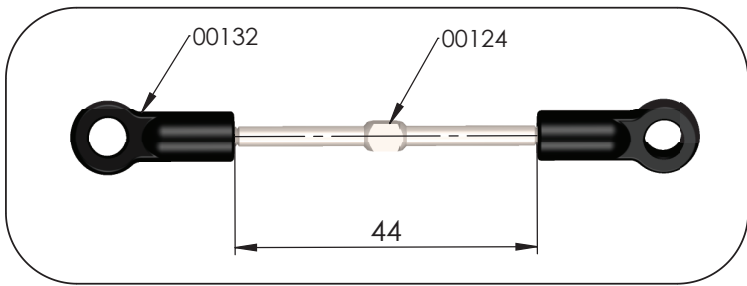
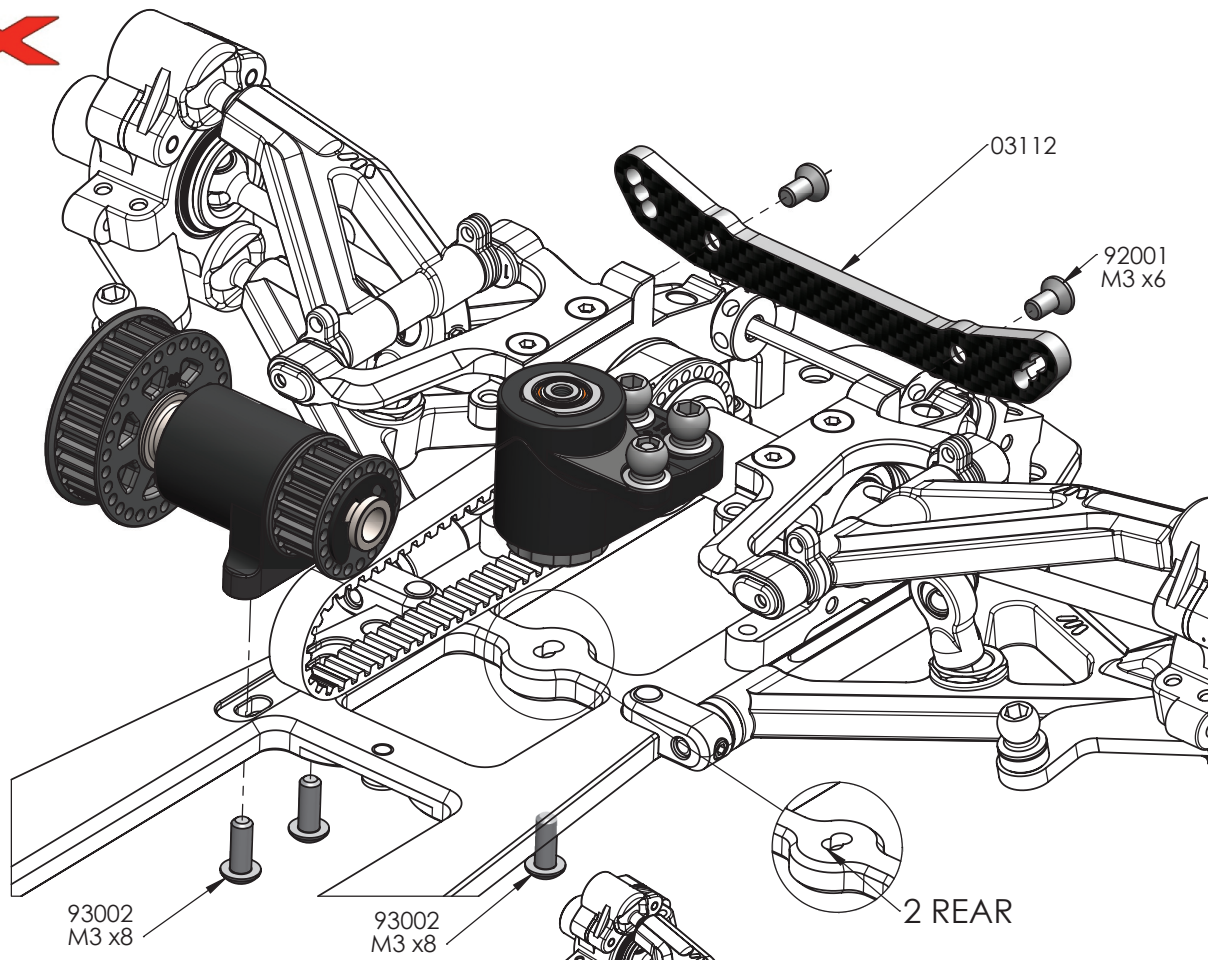
ANTI ROLL BAR		
COD		
03221	Ø 2.2	OPTIONAL
03221-1	Ø 2.3	STANDARD
03221-2	Ø 2.4	OPTIONAL

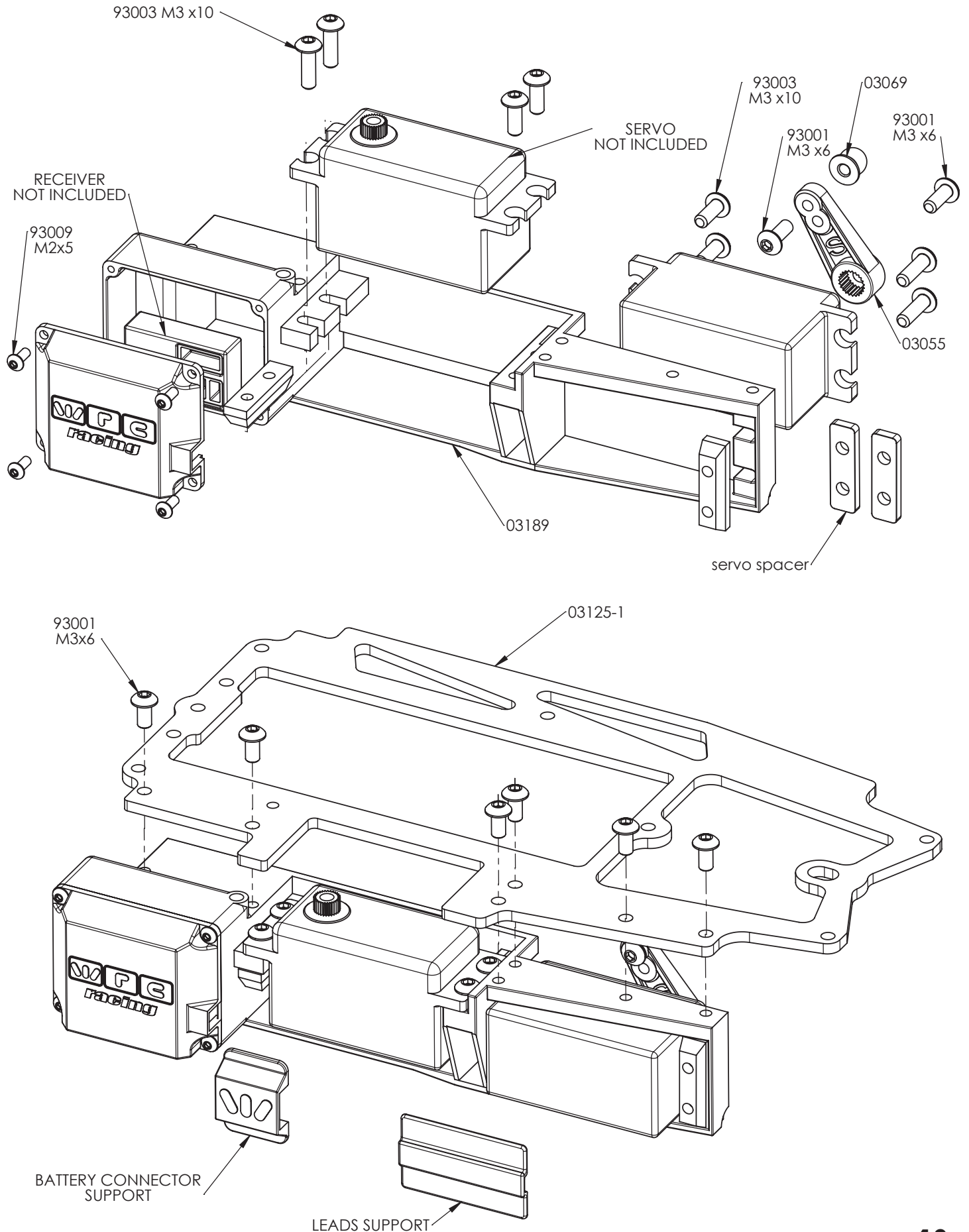


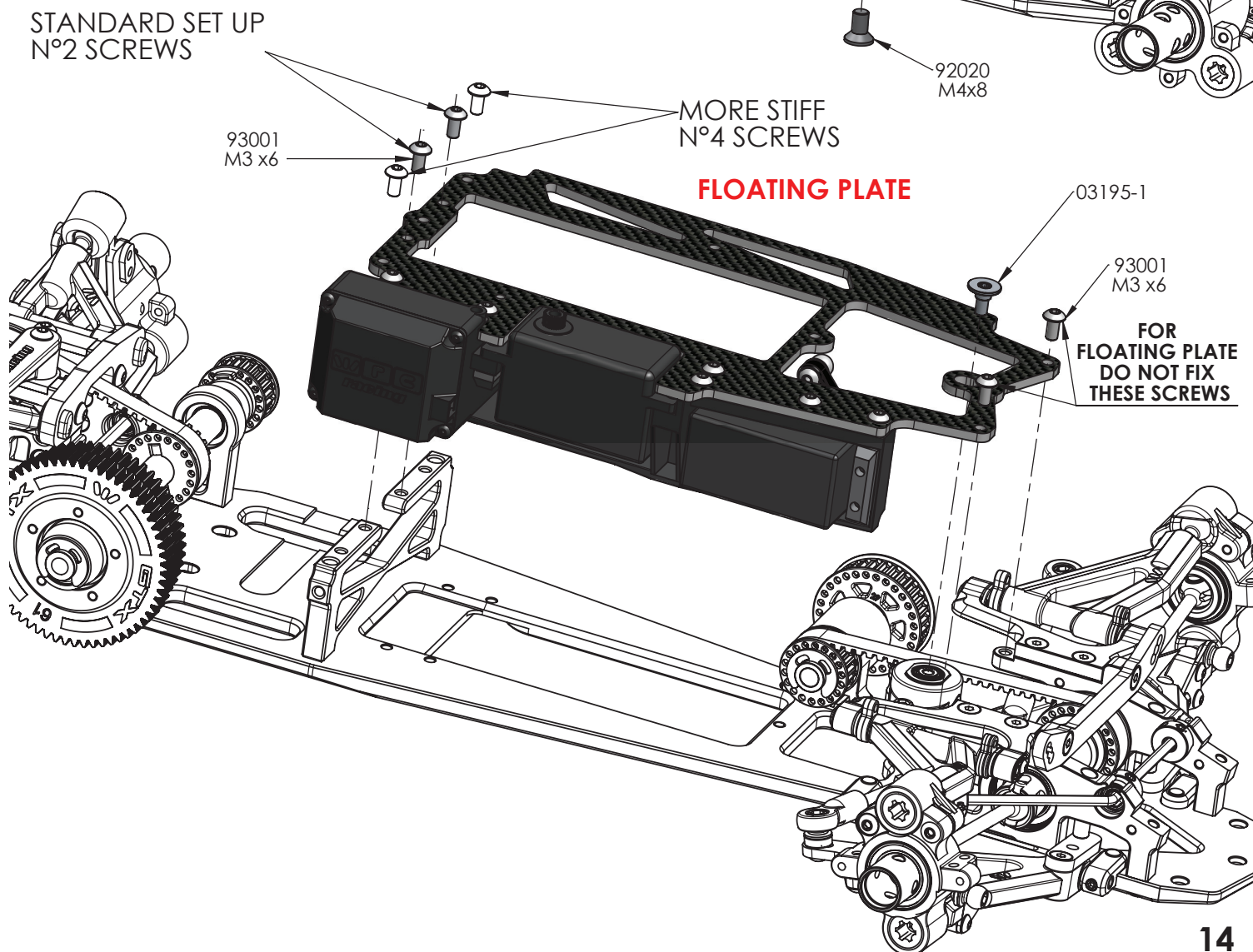
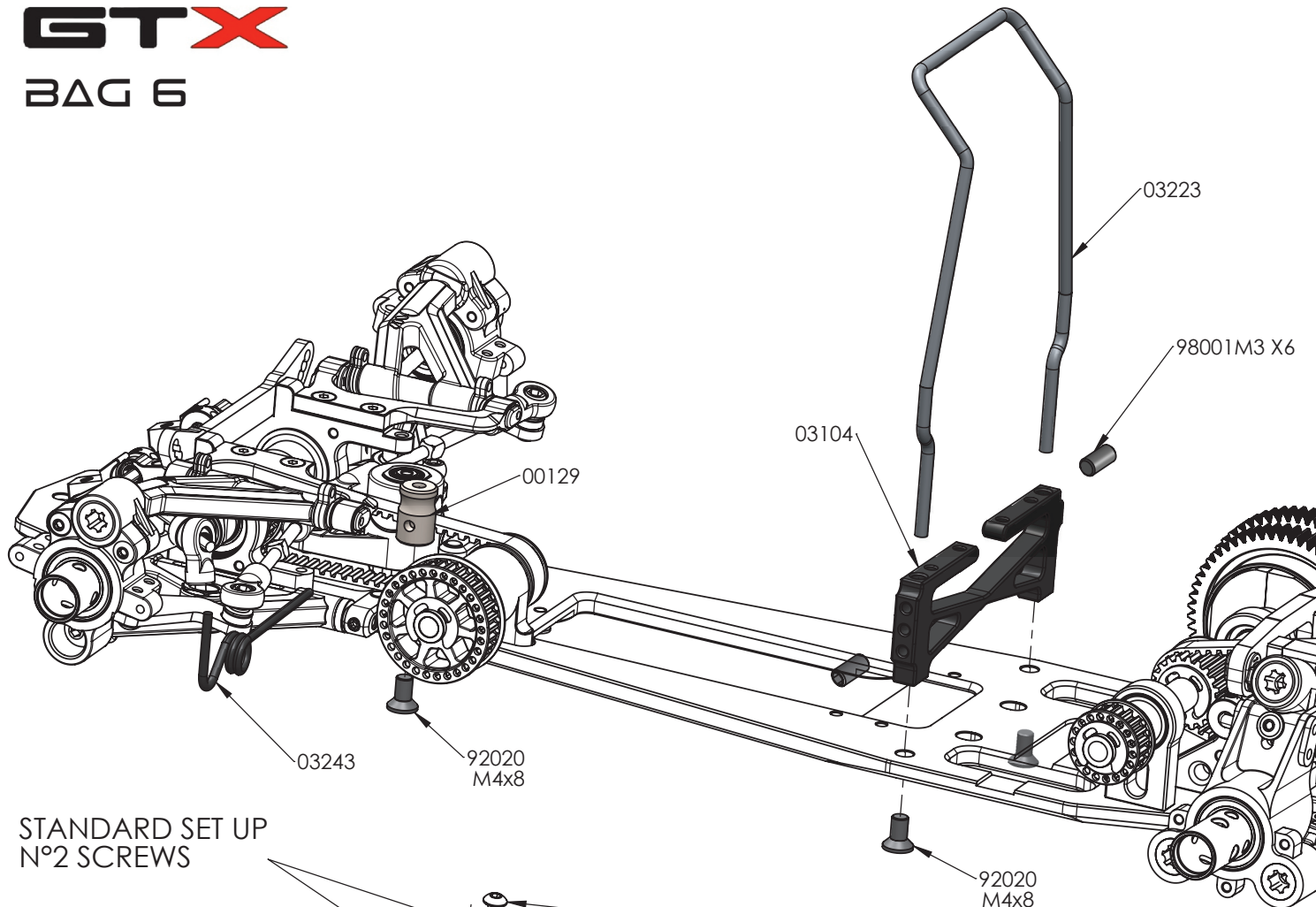


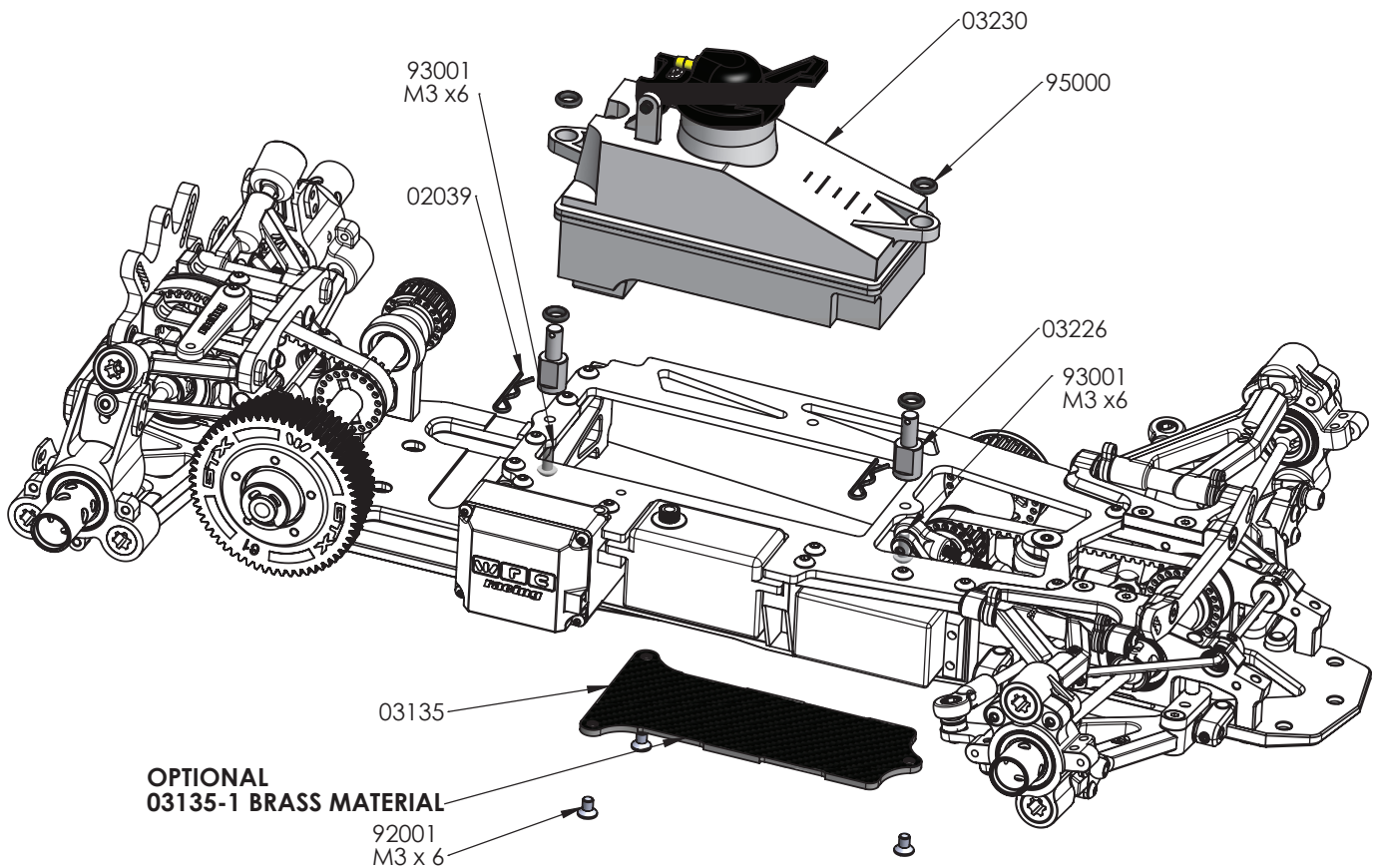
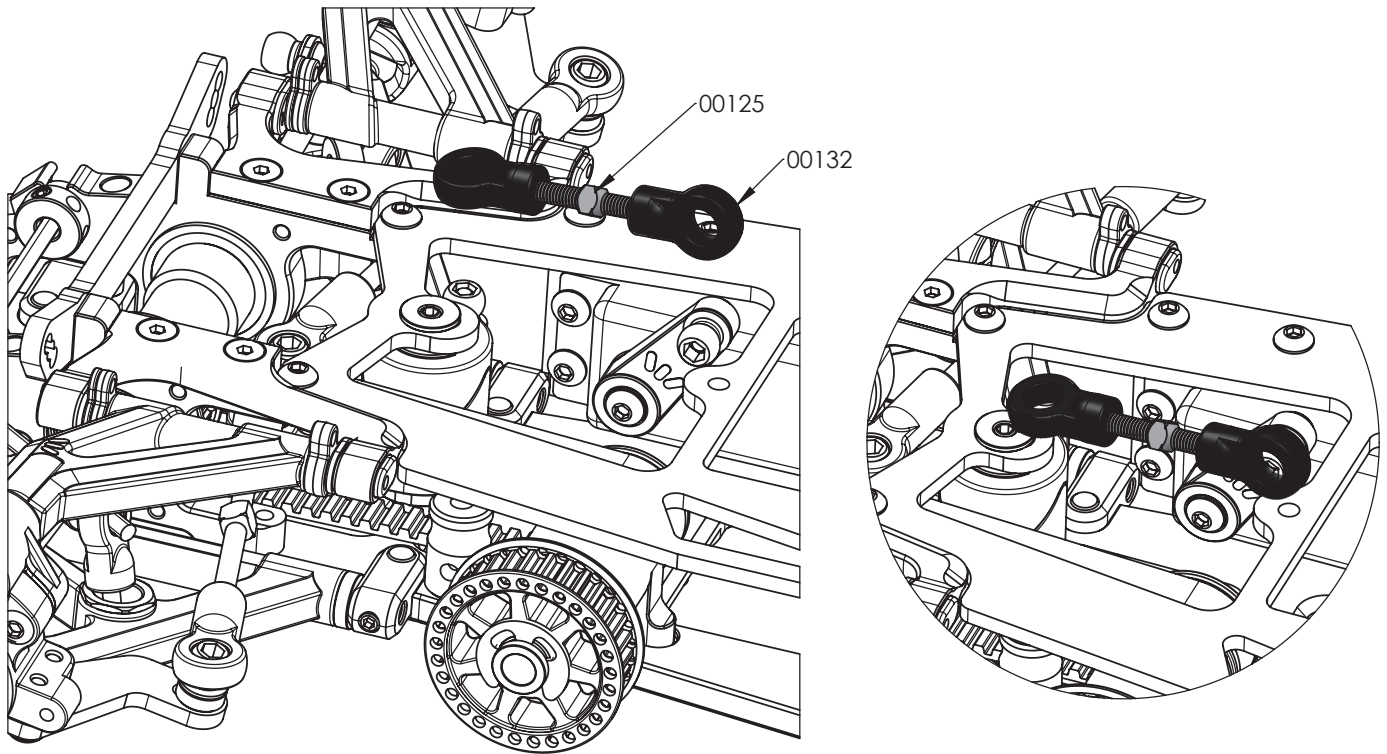
**FRONT CAMBER
REGULATION**



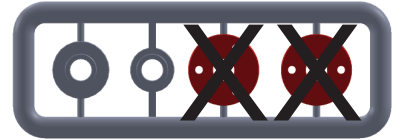




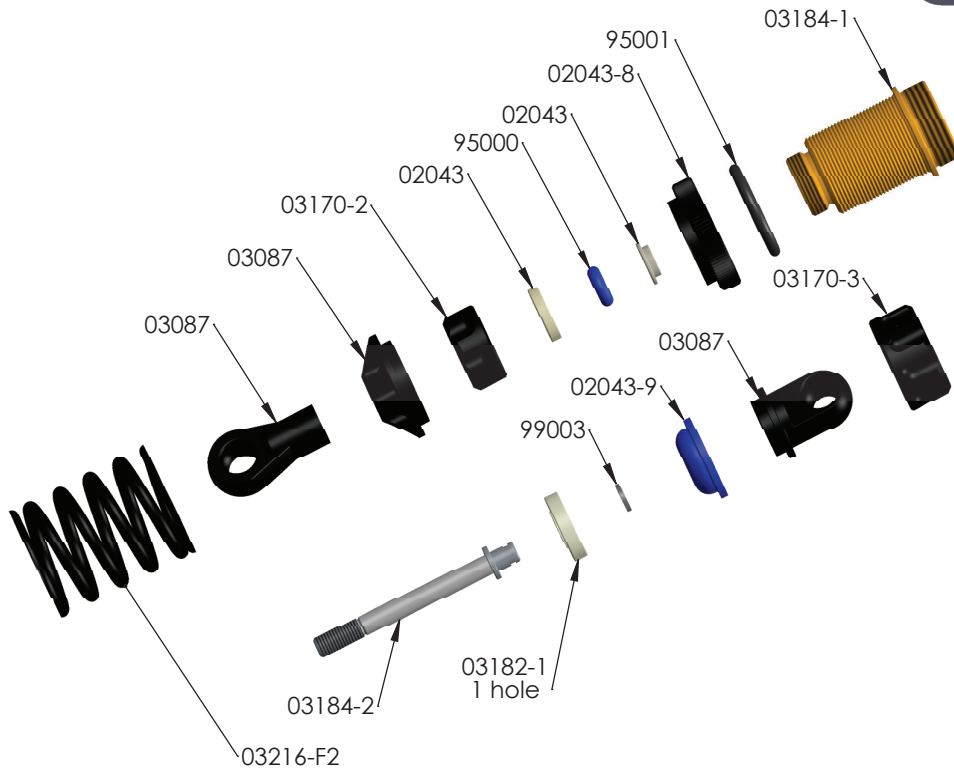




FRONT

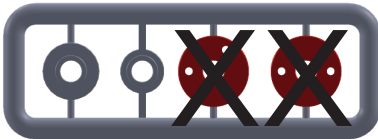


DO NOT USE

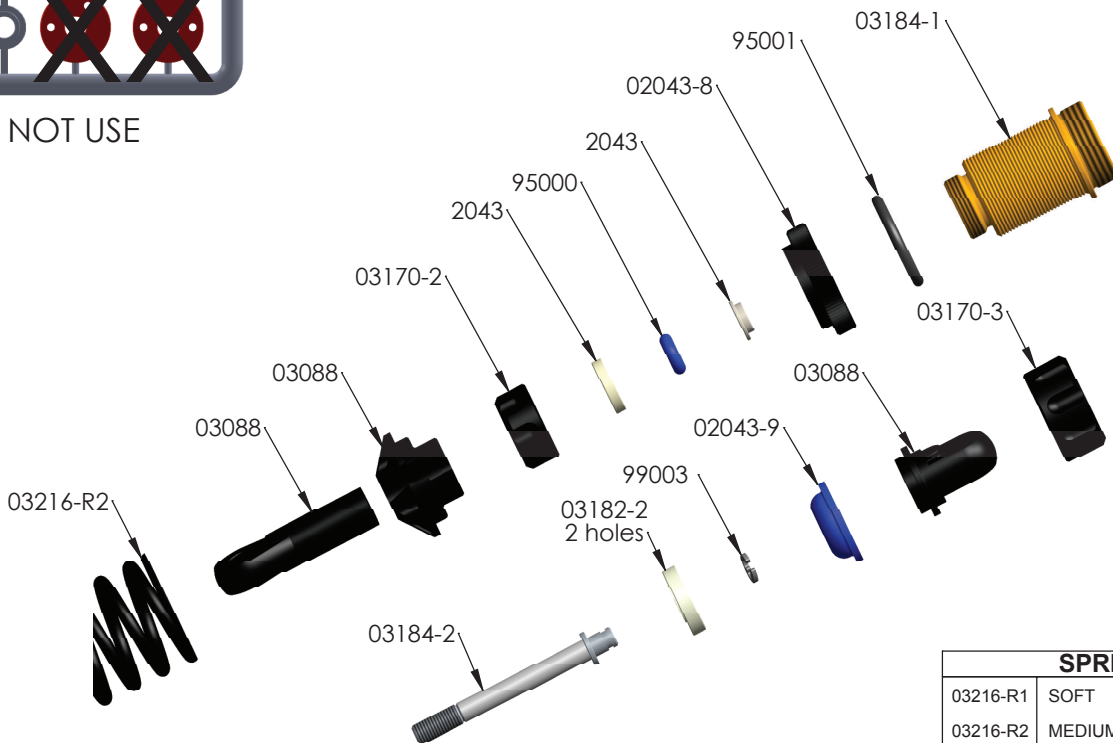


SPRINGS		
03216-F1	SOFT	YELLOW
03216-F2	MEDIUM (IN KIT)	WHITE
03216-F3	HARD	RED
03216-F4	PROGRESSIVE	BLUE

REAR

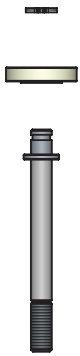


DO NOT USE



SPRINGS		
03216-R1	SOFT	YELLOW
03216-R2	MEDIUM (IN KIT)	WHITE
03216-R3	HARD	RED
03216-R4	PROGRESSIVE	BLUE

1



2



3



4



5



6



SHOCK FILLING

Fully extend the piston rod so the piston is at the bottom of the shock body.

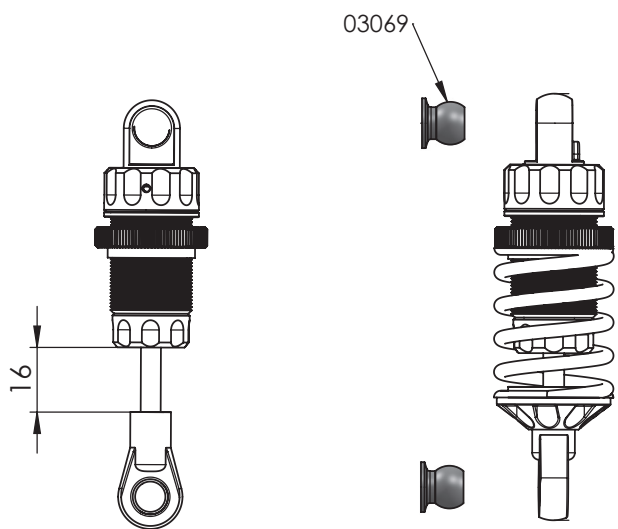
Hold the shock upright and fill the shock body with shock oil as in the picture.

Let the oil settle and allow air bubbles to rise to the top. Slowly move the piston up and down until no more air bubbles appear. Add shock oil as necessary.

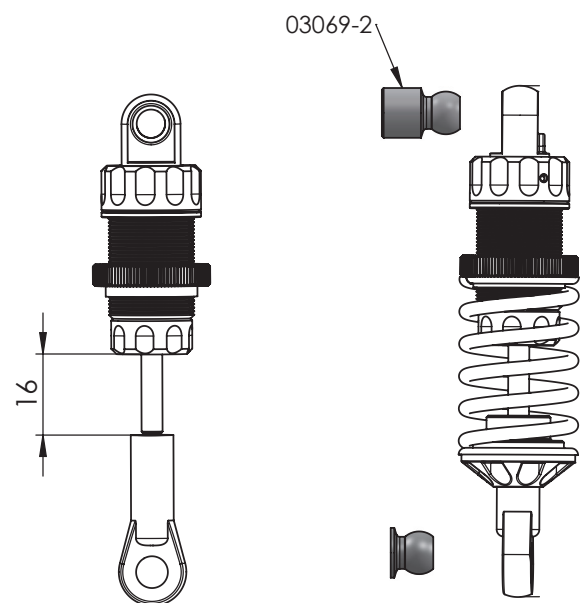
Pull the piston rod most of the way out of the shock bod. Let the shock rest for 5 minutes to allow the air bubbles to scape.

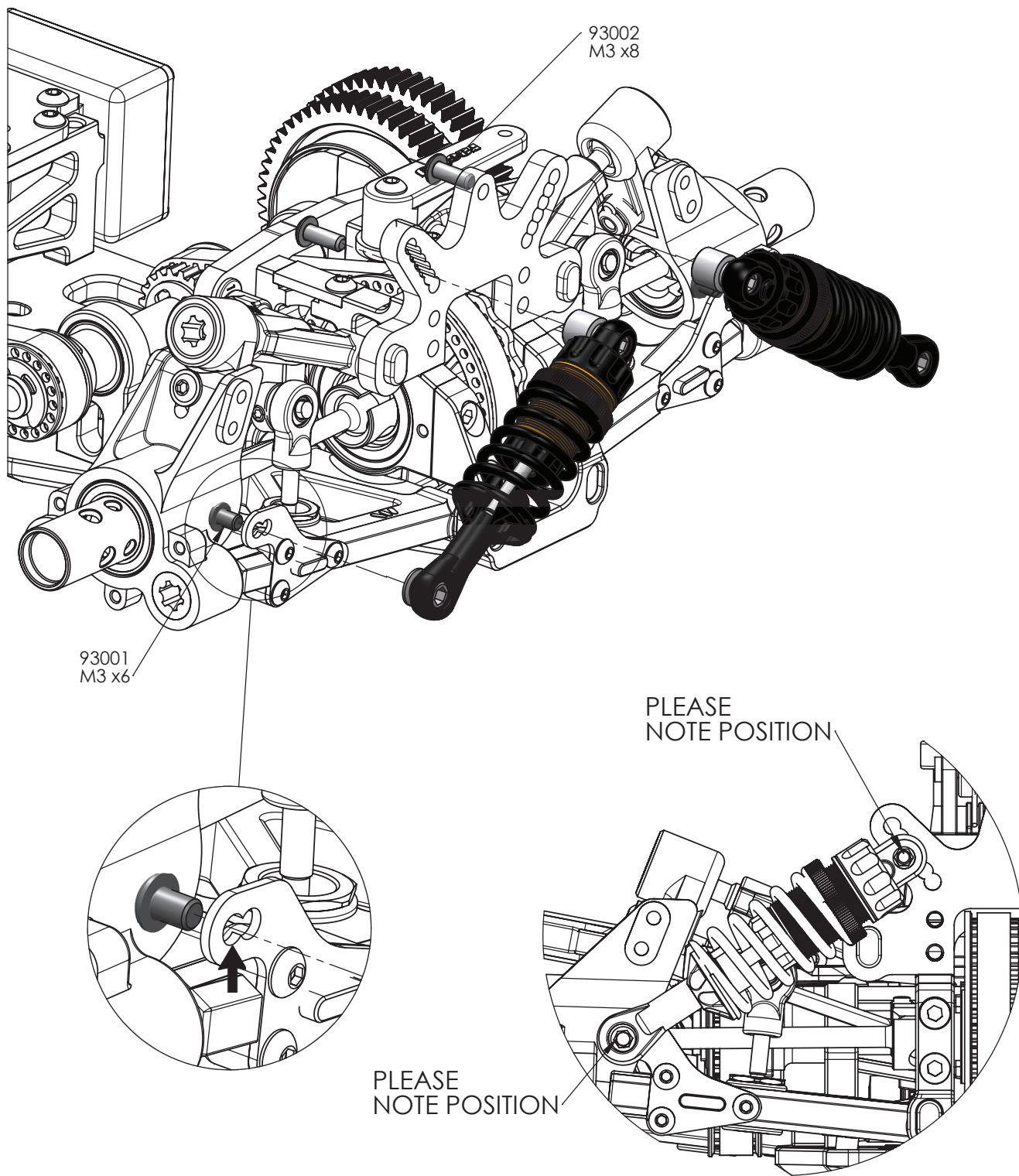
WRC SHOCKS OIL	
CODE	CST
RC0029	400
RC0062	500
RC0030	600 (IN KIT)
RC0063	700
RC0031	800

FRONT

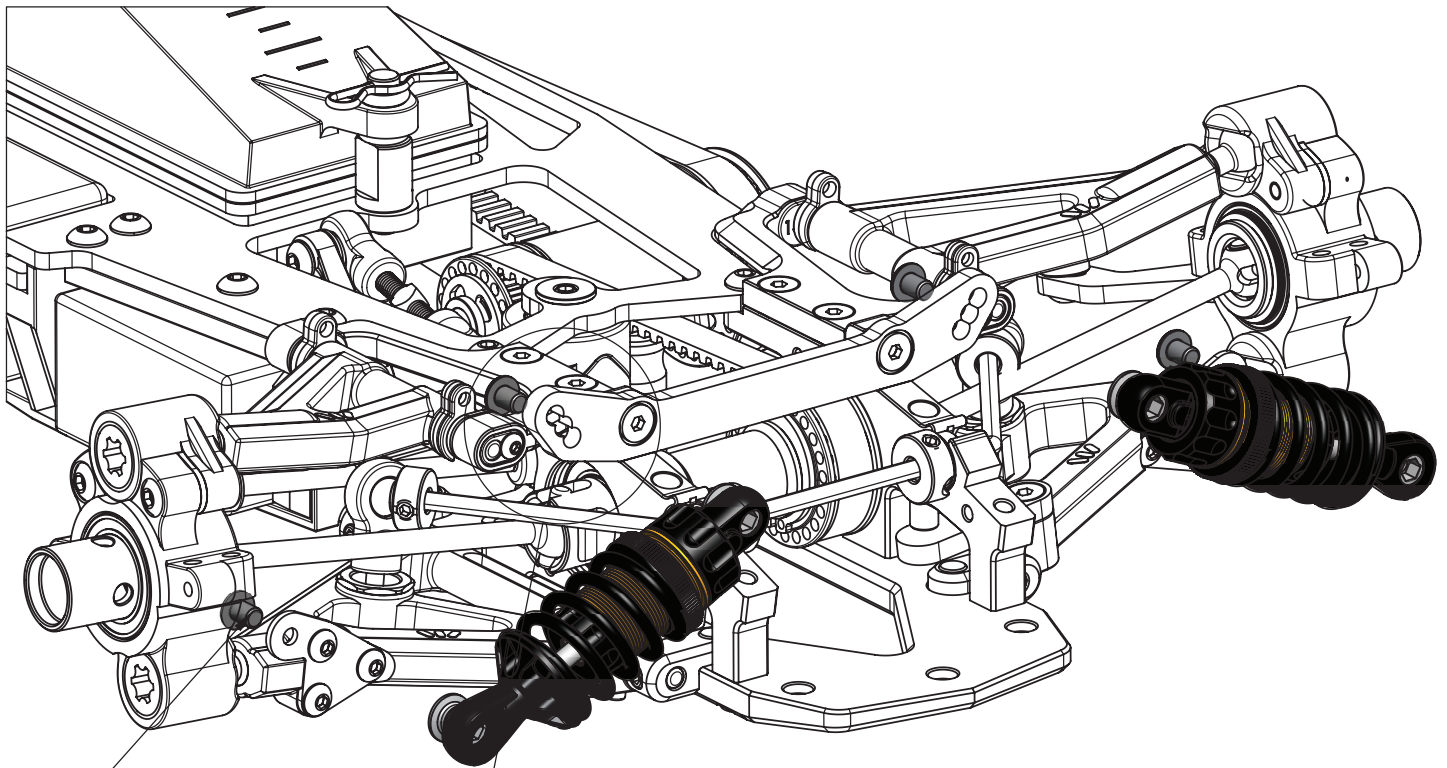


REAR

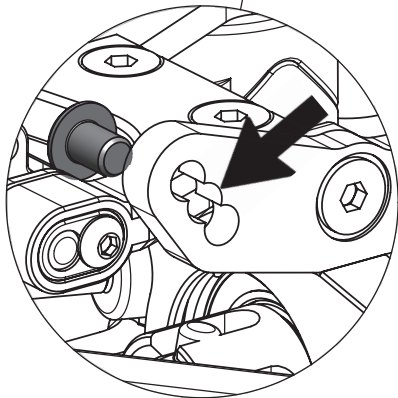




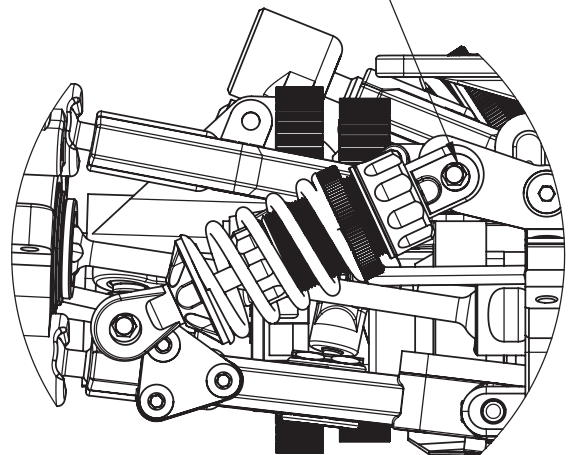
FRONT



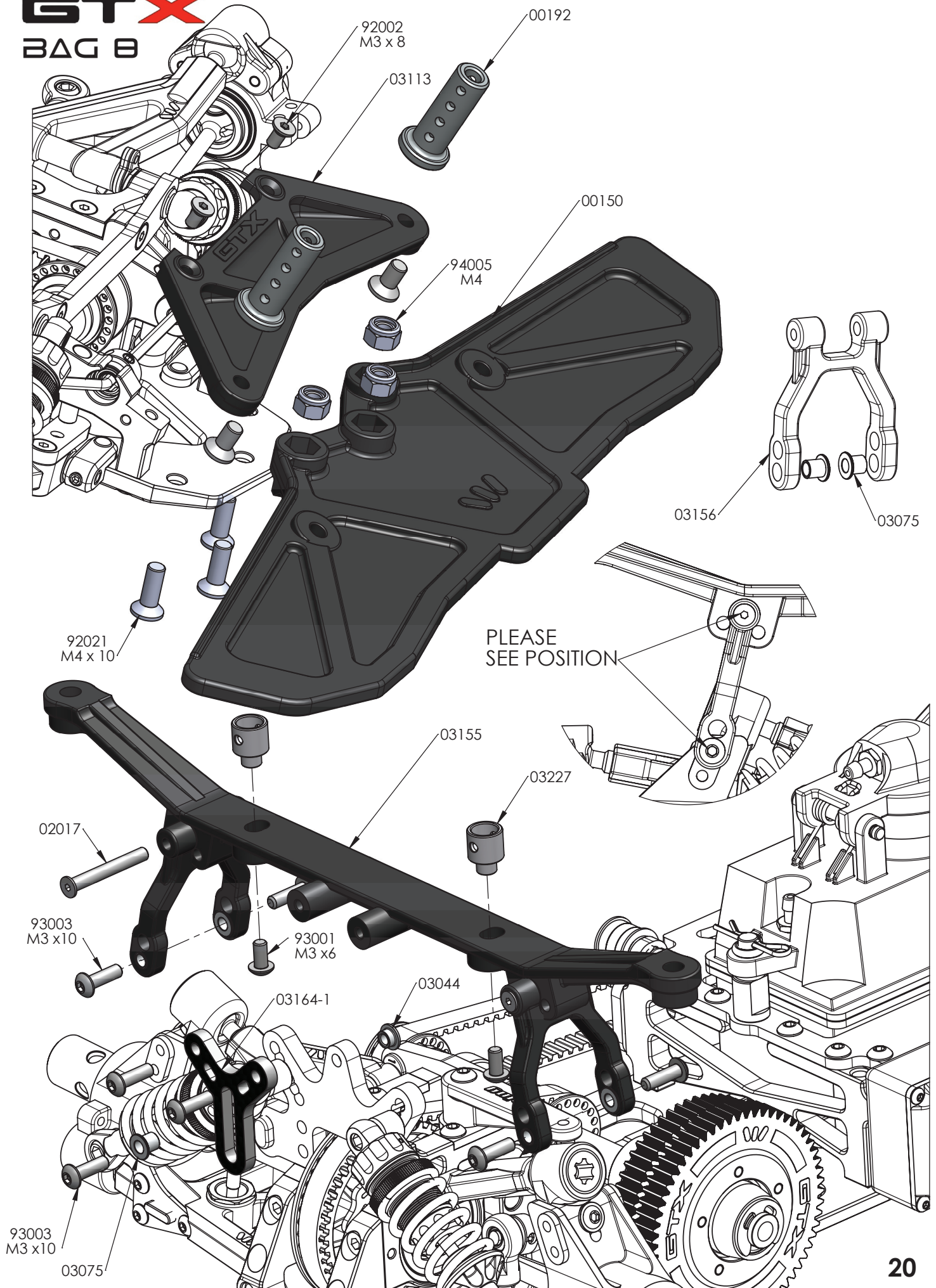
93001
M3 x6

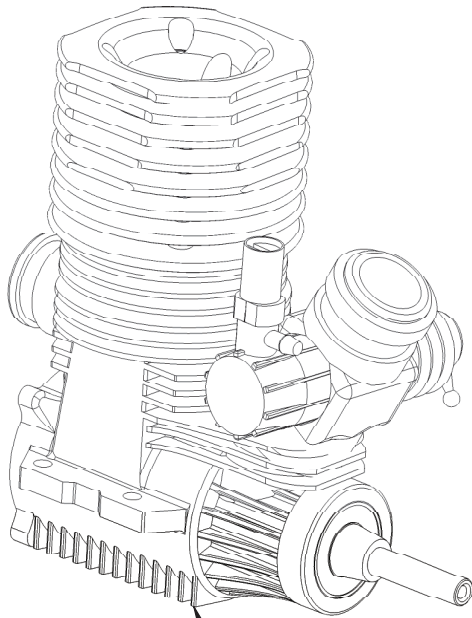


PLEASE SET IN THE
MIDDLE POIN POSITION

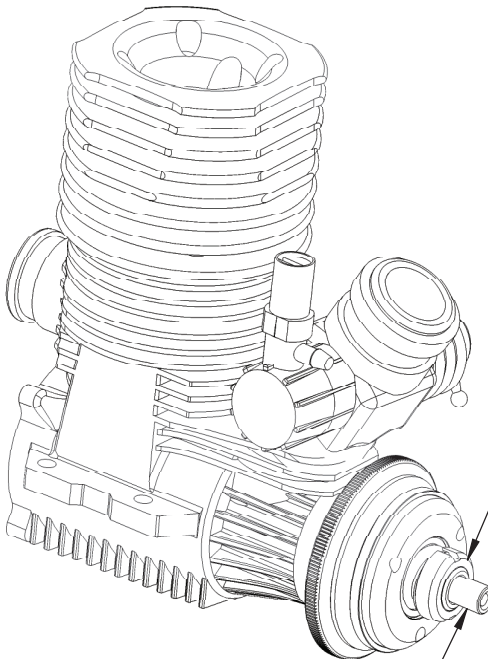
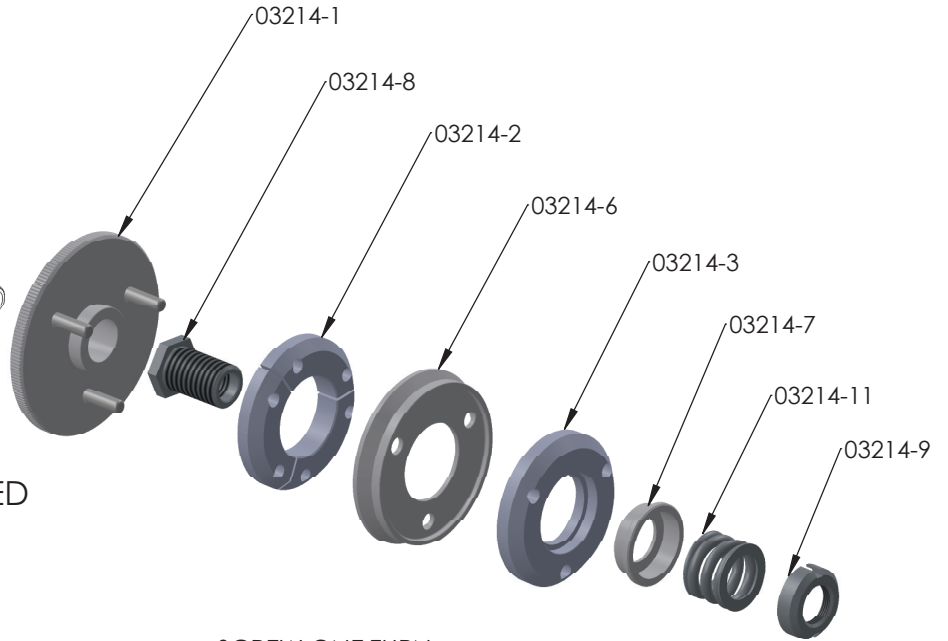


GT^X BAG 8





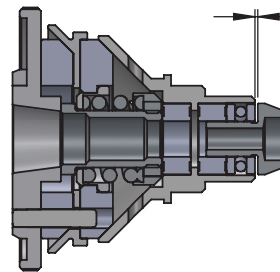
ENGINE NOT INCLUDED



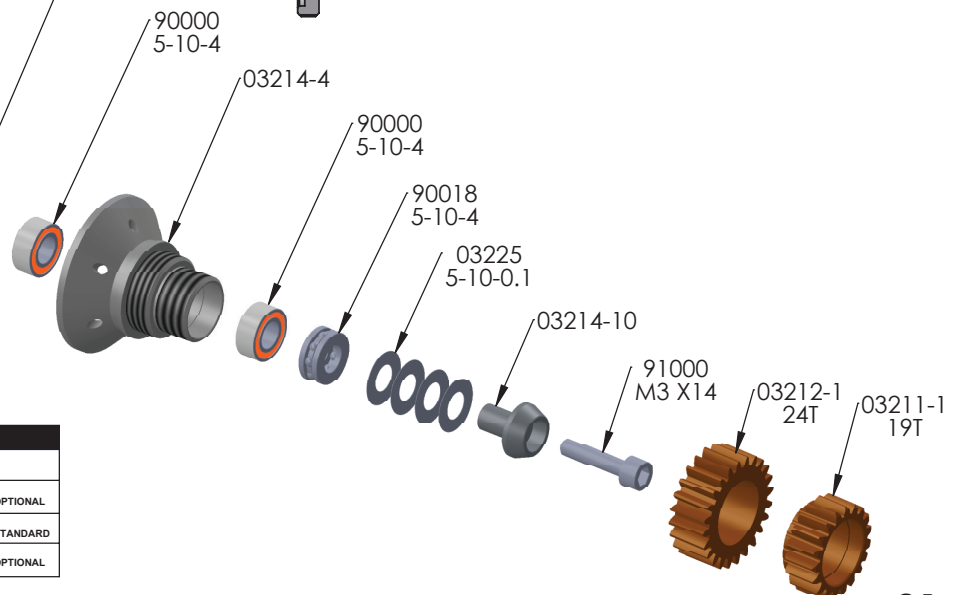
PUT SMALL SHIMS TO REDUCE THE GAP 0.6 TO 0.1/0.2mm



SCREW ONE TURN WHEN THE NUT TOUCH SPRING (PRELOAD 0.5mm)



GAP SHOULD BE 0.6 mm ADJUSTING WITH SMALL SHIMS

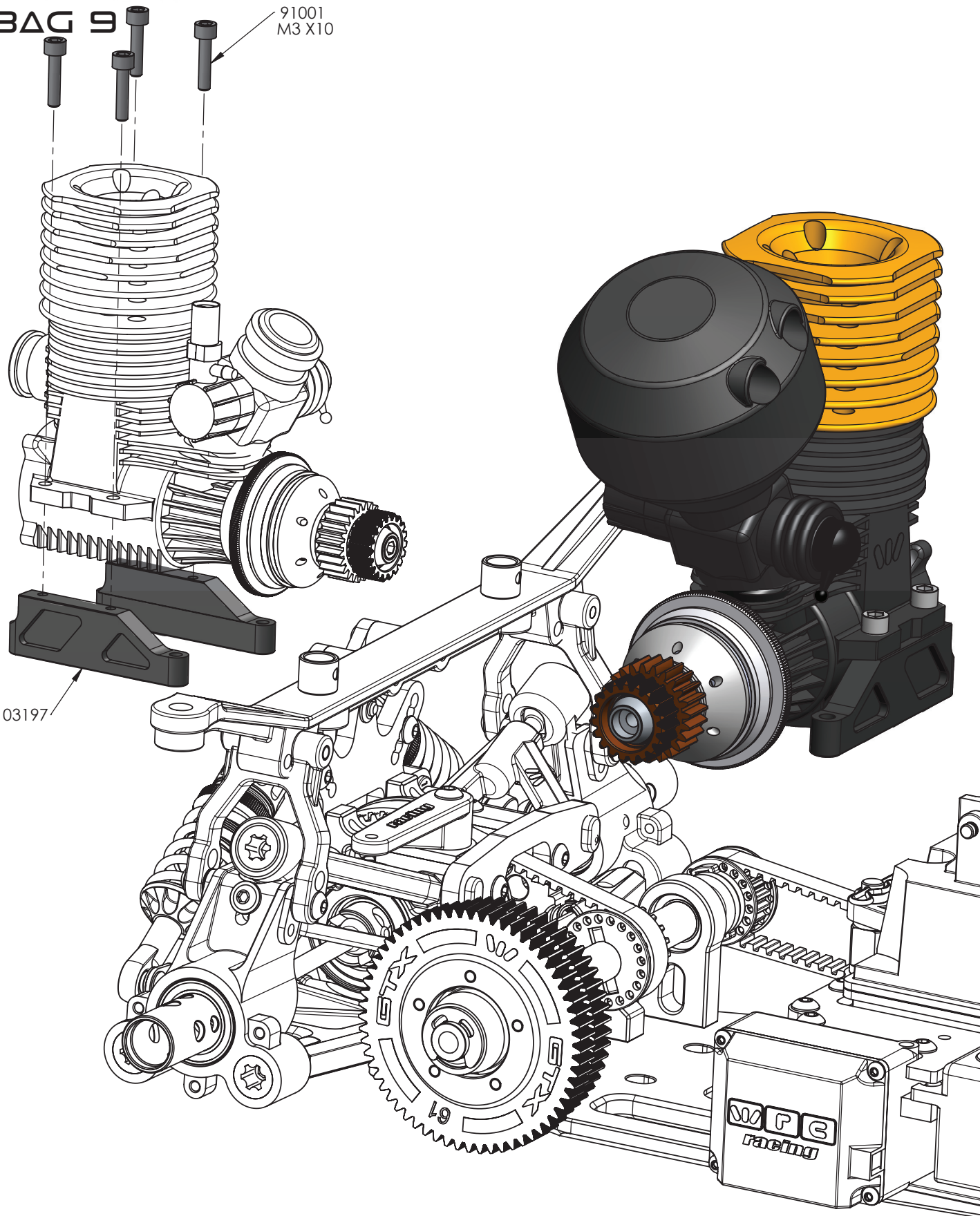


SPEED GEAR					
COD (1ST)			COD (2ND)		
03211	18T	OPTIONAL	03212	23T	OPTIONAL
03211-1	19T	STANDARD	03212-1	24T	STANDARD
03211-2	20T	OPTIONAL	03212-2	25T	OPTIONAL

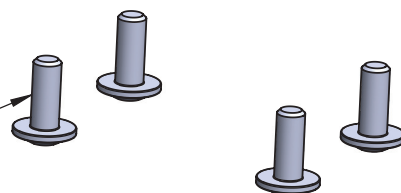
GT X

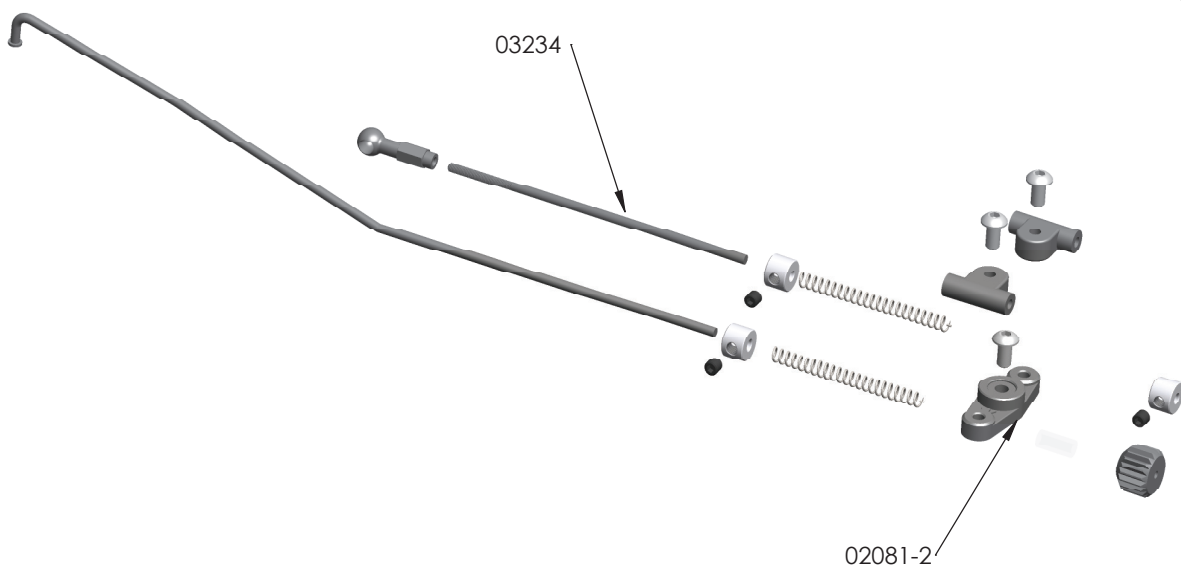
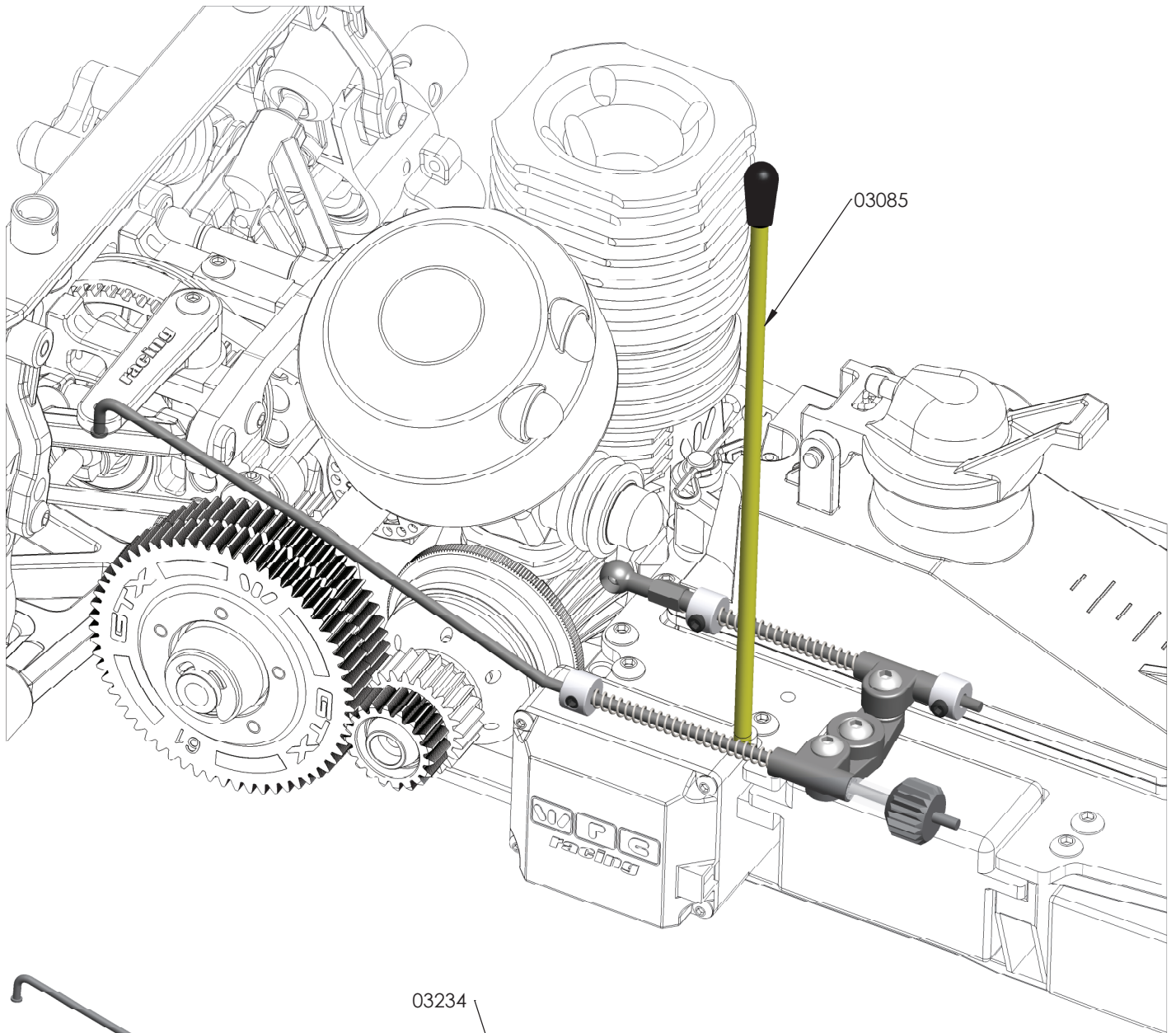
BAG 9

91001
M3 X10

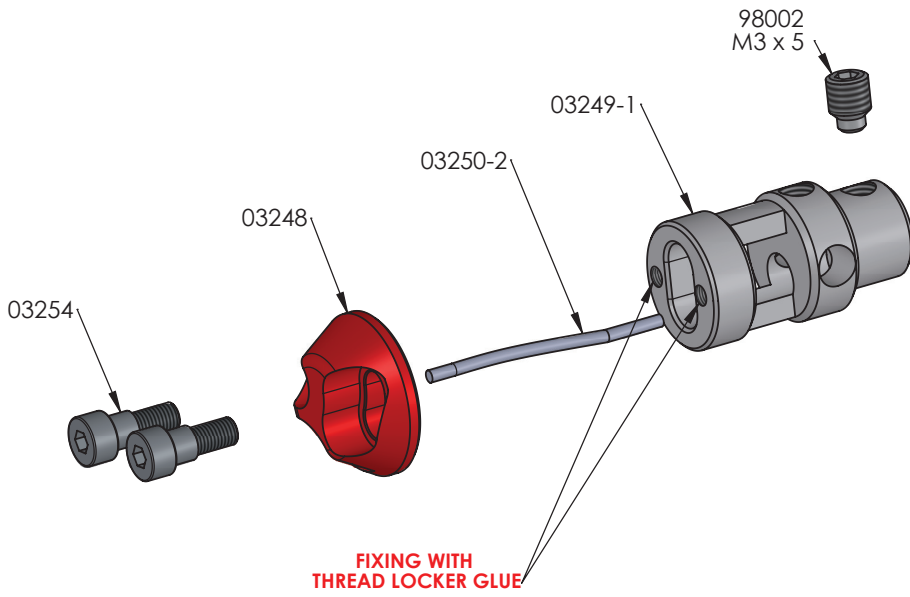


96001
M4 x10

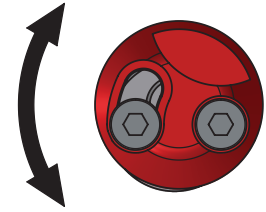




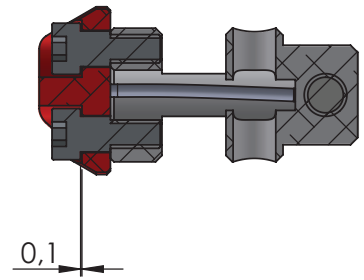
FRONT



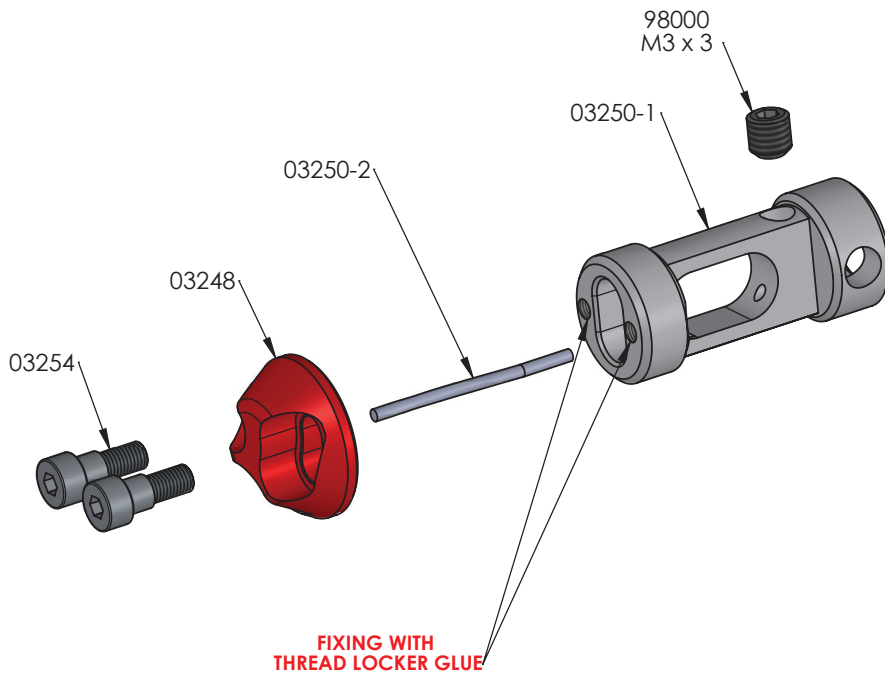
CLOSED



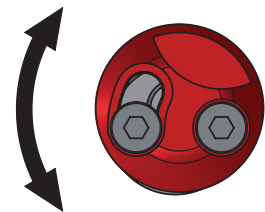
OPEN



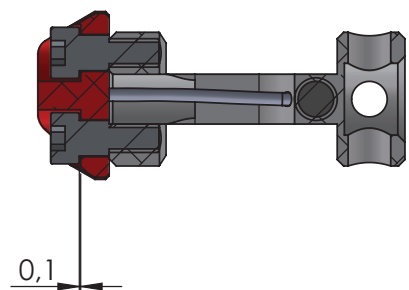
REAR



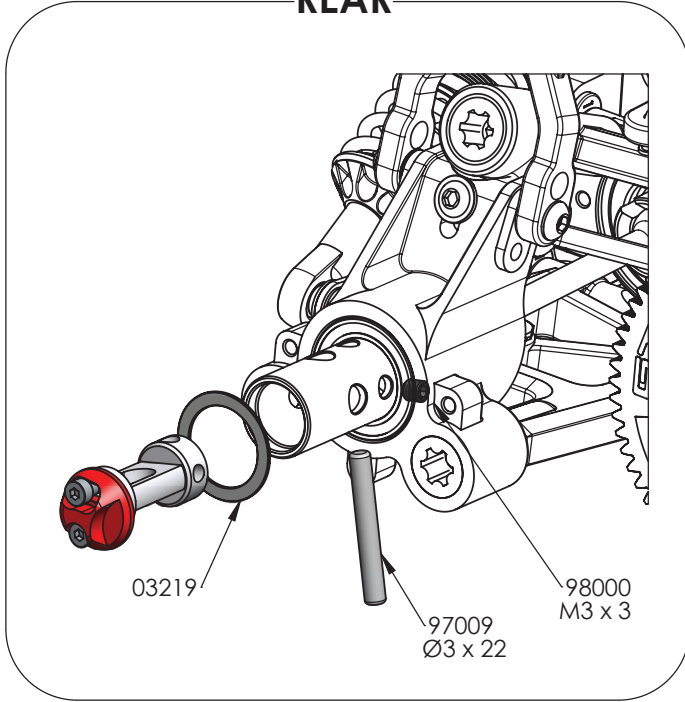
CLOSED



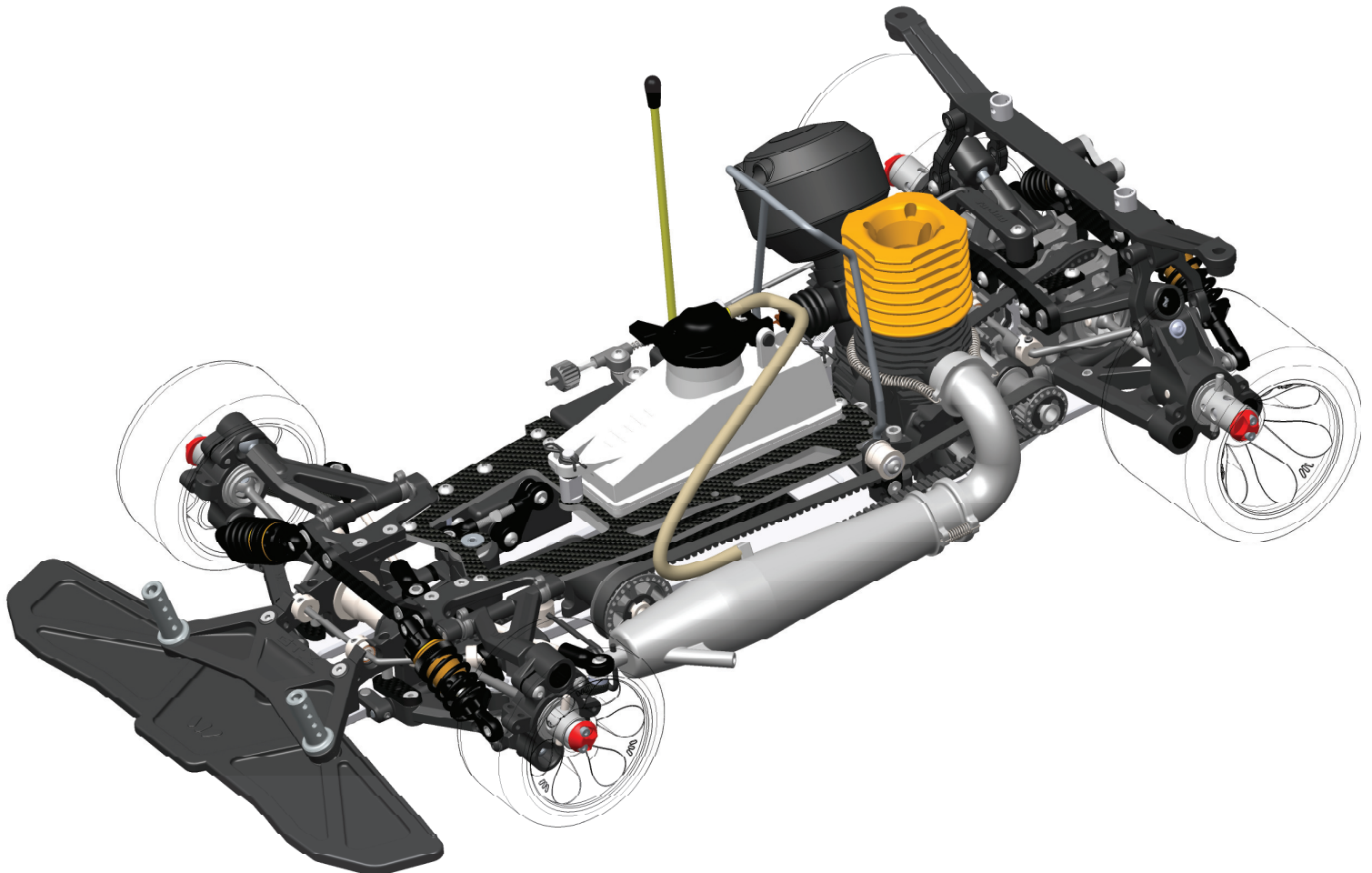
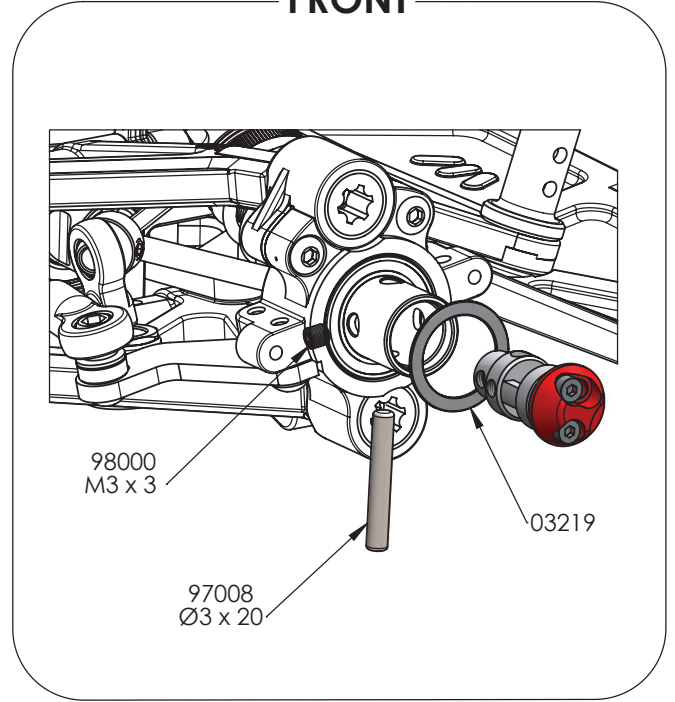
OPEN



REAR



FRONT



GT~~X~~ SETUP SHEET

NAME _____
 DATE _____
 TRACK _____




TRACK CONDITION	
SURFACE	<input type="radio"/> SMOOTH <input checked="" type="radio"/> MEDIUM <input type="radio"/> BUMPY
SIZE	<input type="radio"/> TIGHT <input checked="" type="radio"/> MEDIUM <input type="radio"/> FAST
TRACTION	<input type="radio"/> LOW <input checked="" type="radio"/> MEDIUM <input type="radio"/> HIGH

TRANSMISSION		
PINION	1st: 19	2nd: 24
SPUR GEAR	1st: 61	2nd: 57

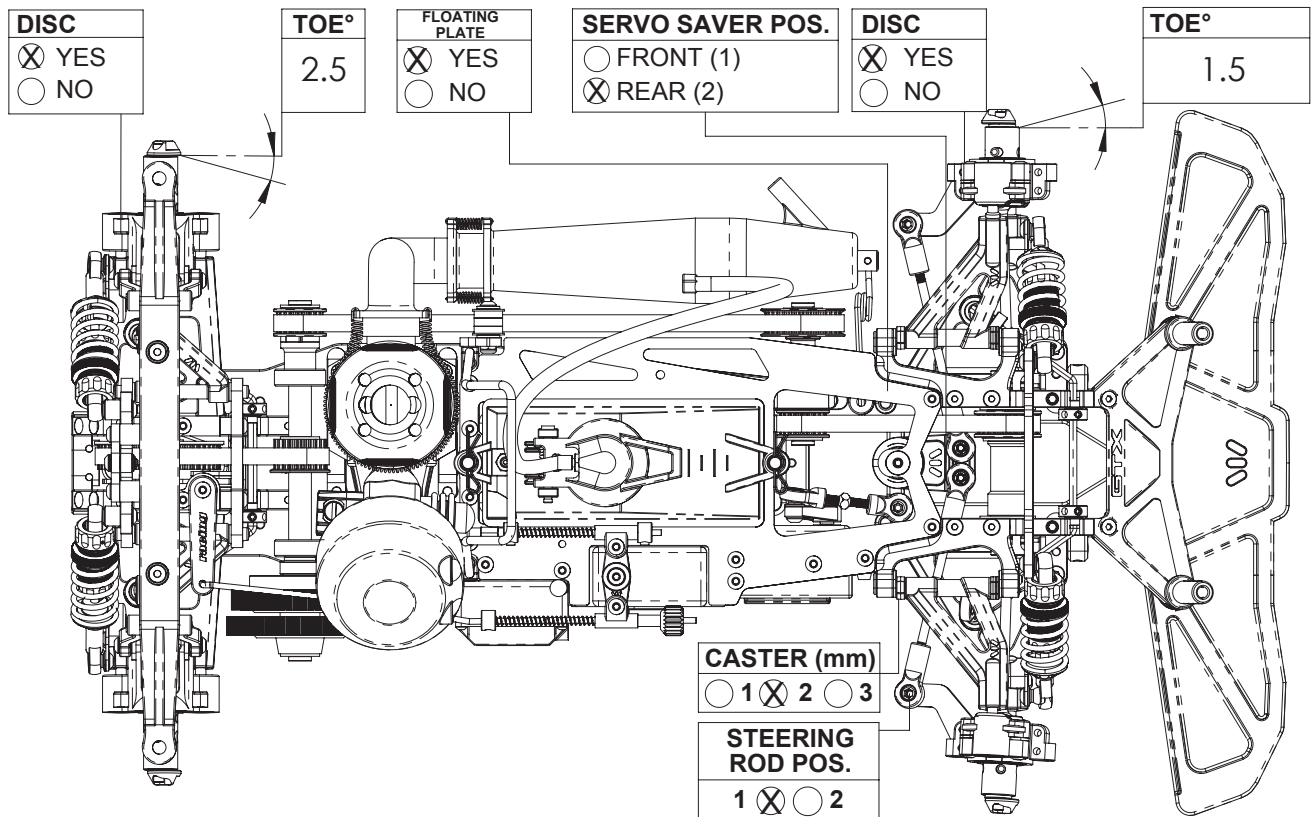
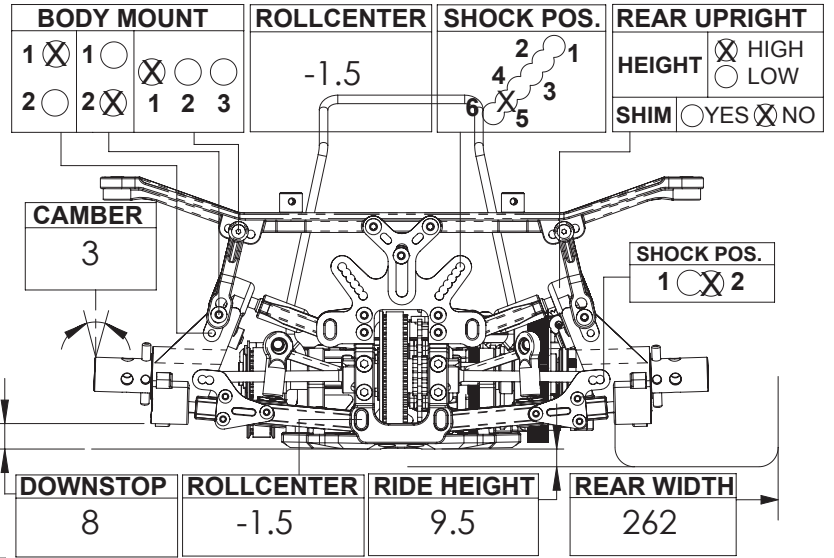
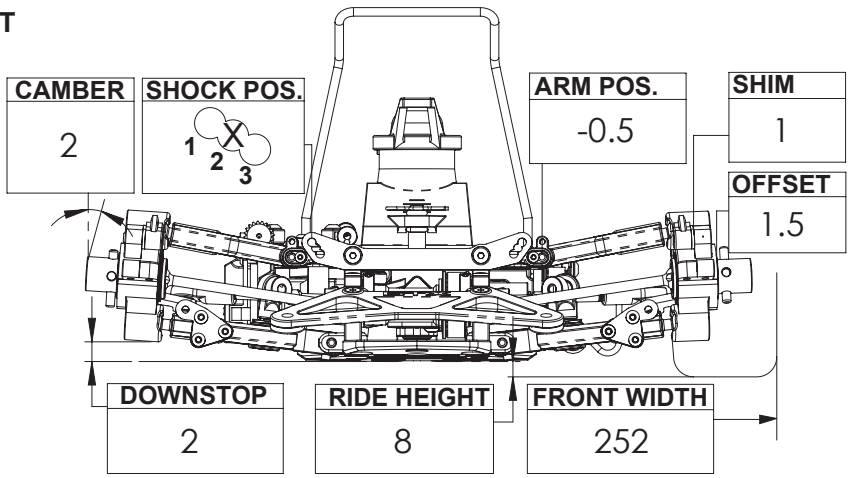
CLUTCH SETTINGS	
SHOE	<input checked="" type="radio"/> STANDARD <input type="radio"/> OPTIONAL
SPRING	0.50
BELL CLEARANCE /mm	0.50
BELL AXIAL PLAY /mm	0.10

SHOCKS SETTINGS		
	FRONT	REAR
SPRINGS		
OIL	600	600
PISTON	ORIGINAL	ORIGINAL
LENGHT /mm		
PRELOAD /mm		
REBOUND %	10%	10%

ANTI-ROLL BAR	
FRONT	2.3
REAR	3.2

ARM BUSHES ORIENTATION		
 +0.5mm -0.5mm	 +1.0mm -1.0mm	 +1.5mm -1.5mm

BATTERY MOUNT	ENGINE MOUNT
<input checked="" type="radio"/> STANDARD <input type="radio"/> BRASS	<input checked="" type="radio"/> STANDARD <input type="radio"/> BRASS





W.R.C. world racing car s.r.l. Via Meucci, 23/B 36040 Brendola (VI) ITALY
Phone: 0039 0 444 401138 fax: 0039 0 444 401139 info@wrc-racing.com
wrc-racing.com