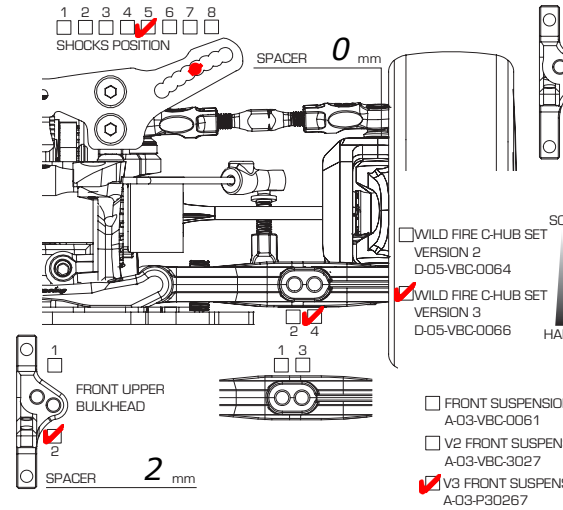
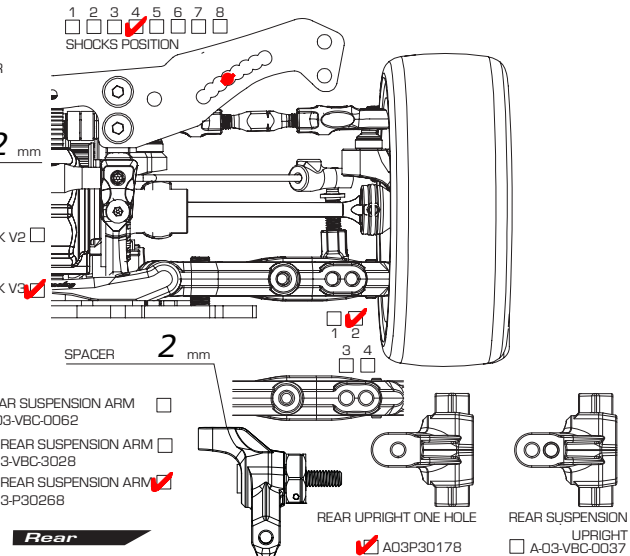


WILDFIREDOZ**SETUP SHEET**

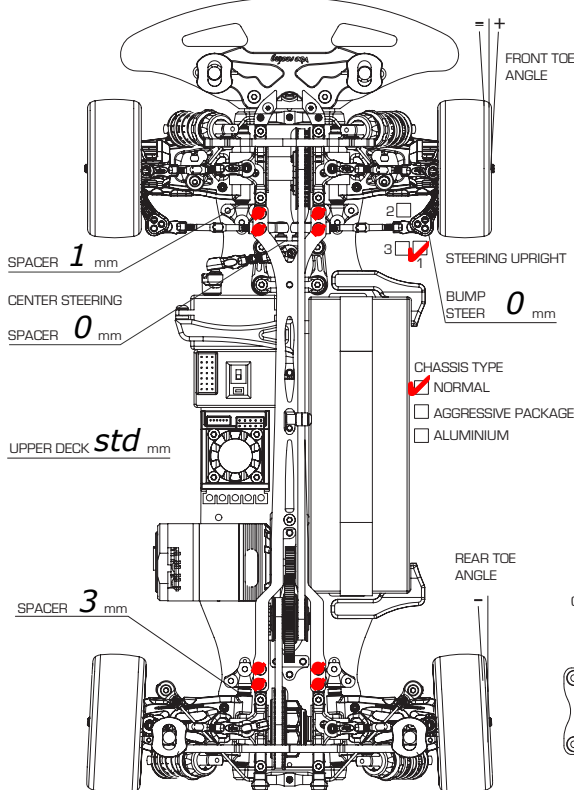
Arn0



Front	
GROUND CLEARANCE	5.0 mm DROOP 9.5 mm
CAMBER ANGLE	-1 ° TOE ANGLE 0 °
CASTER ANGLE	4 ° FRONT DRIVE DIFF (OIL)) / DIRECT <input checked="" type="checkbox"/>
STABILIZER	1.2 <input checked="" type="checkbox"/> 1.4 WHEEL SPACER 0 mm
SUSPENSION SHIM (FF)	1 mm SUSPENSION SHIM (FR) 1 mm
SUSPENSION MOUNT (FF)	F00 SUSPENSION MOUNT (FR) C0
AXLE TYPE / SIZE	TWO-PIECE JOINT / SINGLE JOINT (STEEL / ALUM) mm



Rear	
GROUND CLEARANCE	5.0 mm DROOP 9 mm
CAMBER ANGLE	-1.5 ° TOE ANGLE 3.5 °
REAR DRIVE	DIFF (OIL) 7k) DRIVE CUP ALL ALUMINUM / STEEL <input checked="" type="checkbox"/>
STABILIZER	1.2 <input checked="" type="checkbox"/> 1.4 WHEEL SPACER 0 mm
SUSPENSION SHIM (FF)	1 mm SUSPENSION SHIM (FR) 1 mm
SUSPENSION MOUNT (FF)	E30 SUSPENSION MOUNT (FR) C05
AXLE TYPE / SIZE	TWO-PIECE JOINT / SINGLE JOINT (STEEL / ALUM) mm



Front	
SHOCK LENGTH	59.5 mm
PISTON	<input checked="" type="checkbox"/> 4 hole(s) / OTHERS
OIL	400cst
SPRING	Yokomo Pink
OIL SEALER CAP	S / MS / <input checked="" type="checkbox"/> / H
REBOUND	25 %
NOTES	
MOTOR	D4 1s
SPUR	96 T
PITCH	64
PINION	48 T
TIRE	Jacob Blue
TIRE INSERT	
WHEEL	Jacob
TIRE ADDITIVE	SXT
BODY	PF LW Dart
REAR WING	LW Dart
ESC	Tekin RSX
BATTERY	Trinity Revtech
REMARKS	Droop is measured to center outer pin

Chassis Flex Setting (Fill in the Circle)

