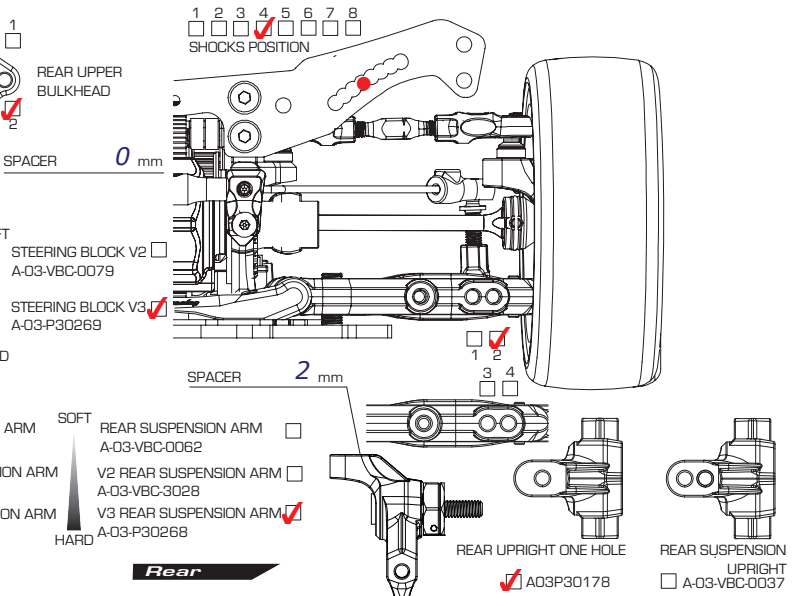
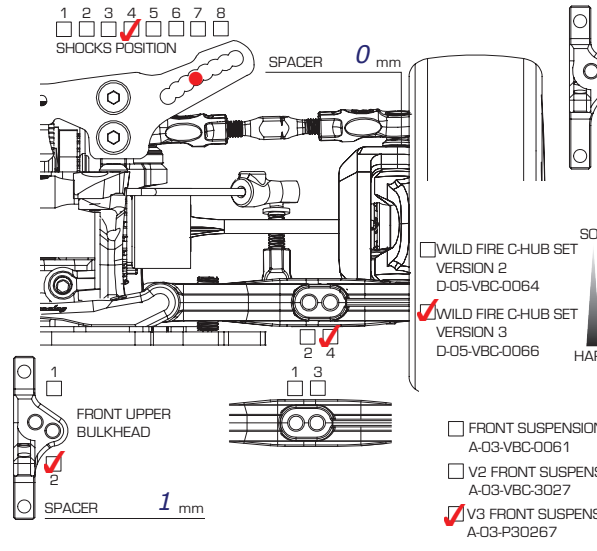


WILDFIRE DOT

1/10 4WD ELECTRIC COMPETITION TOURING CAR KIT

SETUP SHEET

Arn0



Front

GROUND CLEARANCE *5.4* mm DROOP *5.5* mm

CAMBER ANGLE *1.5*° TOE ANGLE *0.5*°

CASTER ANGLE *4*° FRONT DRIVE DIFF (OIL) *]/DIRECT*

STABILIZER 1.2 1.4 WHEEL SPACER *0.0* mm

SUSPENSION SHIM (FF) *0* mm SUSPENSION SHIM (FR) *0* mm

SUSPENSION MOUNT (FF) *0* SUSPENSION MOUNT (FR) *0*

AXLE TYPE / SIZE TWO-PIECE JOINT / SINGLE JOINT (STEEL/ALUM) *51* mm

Rear

GROUND CLEARANCE *5.6* mm DROOP *0.5 under hub* mm

CAMBER ANGLE *1.5*° TOE ANGLE *2*°

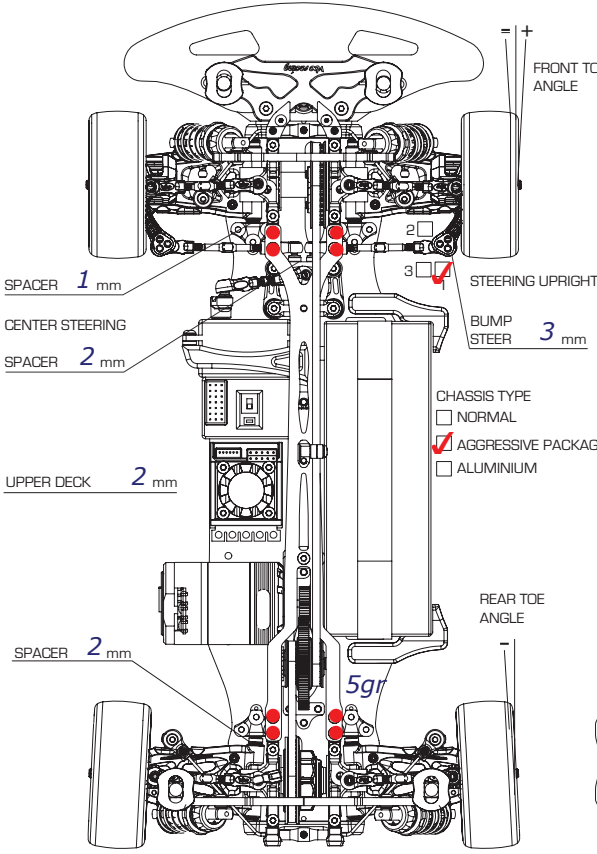
REAR DRIVE DIFF (OIL) *2000* DRIVE CUP ALUMINUM / STEEL

STABILIZER 1.2 1.4 WHEEL SPACER *0.0* mm

SUSPENSION SHIM (FF) *0* mm SUSPENSION SHIM (FR) *0* mm

SUSPENSION MOUNT (FF) *0* SUSPENSION MOUNT (FR) *0*

AXLE TYPE / SIZE TWO-PIECE JOINT / SINGLE JOINT (STEEL/ALUM) *49* mm



Front

SHOCK LENGTH *59.5* mm

PISTON 4 hole(s) / OTHERS drilled 1.3

OIL *450*

SPRING *oranje*

OIL SEALER CAP S / VS / M / H

REBOUND *0* %

NOTES *caps drilled*

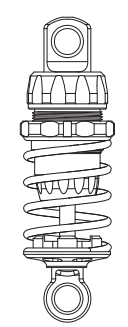
MOTOR *muchmore 10.5 zero* SPUR *108* T PITCH *64* PINION *38* T

TIRE *ride 34* TIRE INSERT WHEEL

TIRE ADDITIVE *spider blue* BODY *dodge LW* REAR WING

ESC *muchmore zero* BATTERY *Team silverback*

REMARKS



Rear

SHOCK LENGTH *59.5* mm

PISTON 4 hole(s) / OTHERS drilled 1.3

OIL *450*

SPRING *red*

OIL SEALER CAP S / VS / M / H

REBOUND *0* %

NOTES *caps drilled*

