

# INTRODUCTION

## BEFORE YOU START

The Sabre S4 is a professional 1/10 scale touring car and should be built only by persons aged 16 years or older with previous experience building and operating R/C model cars. This is not a toy and is not intended for use by beginners or by children without direct supervision of a responsible, knowledgeable adult. Read the instruction manual carefully before building.

T.O.P. Racing shall not be liable for any loss, injury or damages, whether direct, indirect, special, incidental, or consequential, arising from the use, misuse, or abuse of this product and/or any product or accessory required to operate this product.

## GENERAL PRECAUTIONS

- This product is not suitable for children under 16 years of age without the direct supervision of a knowledgeable adult.
- Assemble this kit only in places away from the reach of small children.
- First-time builders and users should seek advice from people who have building experience in order to assemble the model correctly and to allow the model to reach its performance potential.
- Exercise care when using tools and sharp instruments.
- Take care when building, as some parts may have sharp edges.
- Keep small parts out of reach of small children. Children must not be allowed to put any parts in their mouth, or pull vinyl bag over their head.
- Immediately after using your model, do not touch equipment on the model such as the motor and speed controller, because they generate high temperatures. You may seriously burn yourself by touching them.
- Follow the operating instructions for the radio equipment at all times.
- Do not put fingers or any objects inside rotating and moving parts, as this may cause damage or serious injury as your finger, hair, clothes, etc. may get caught.
- Be sure that your operating frequency is clear before turning on or running your model, and never share the same frequency with somebody else at the same time. Ensure that others are aware of the operating frequency you are using and when you are using it.
- Always turn on your transmitter before turning on the receiver in the car. Always turn off the receiver before turning off your transmitter.
- Keep the wheels of the model off the ground when checking the operation of the radio equipment.
- Disconnect the battery pack before storing your model.
- To prevent any serious personal injury and/or damage to property, be responsible when operating all remote controlled models.
- The model car is not intended for use on public places and roads or areas where its operation can conflict with or disrupt pedestrian or vehicular traffic.
- Do not use your model:
  1. Near real cars, animals, or people that are unaware that an RC car is being driven.
  2. In places where children and people gather
  3. In limited indoor spaces
  4. In wet conditions
  5. In the street
  6. In areas where loud noises can disturb others such as hospitals and residential areas
  7. At night or anytime your line of sight to the model may be obstructed or impaired in any way.

To prevent any serious personal injury and/or damage to property, please be responsible when operating all remote controlled models.

## ELECTRICAL PRECAUTIONS

- Insulate any exposed electrical wiring (using heat shrink tubing or electrical tape) to prevent dangerous short circuits. Take maximum care in wiring, connecting and insulating cables. Make sure cables are always connected securely. Check connectors for if they become loose. And if so, reconnect them securely. Never use R/C models with damaged wires. A damaged wire is extremely dangerous, and can cause short-circuits resulting in fire.
- Low battery power will result in loss of control. Loss of control can occur due to a weak battery in either the transmitter or the receiver. Weak running battery may also result in an out of control car if your car's receiver power is supplied by the running battery. Stop operation

immediately if the car starts to slow down.

- When not using RC model, always disconnect and remove battery.
- Do not disassemble battery or cut battery cables. If the running battery short-circuits, approximately 300W of electrical power can be discharged, leading to fire or burns. Never disassemble battery or cut battery cables.
- Use a recommended charger for the receiver and transmitter batteries and follow the instructions correctly. Over-charging, incorrect charging, or using inferior chargers can cause the batteries to become dangerously hot. Recharge battery when necessary. Continual recharging may damage battery and, in the worst case, could build up heat leading to fire. If battery becomes extremely hot during recharging, please ask your local hobby shop for check and/or repair and/or replacement.
- Regularly check the charger for potential hazards such as damage to the cable, plug, casing or other defects. Ensure that any damage is rectified before using the charger again. Modifying the charger may cause short-circuit or overcharging leading to a serious accident. Therefore do not modify the charger.
- Always unplug charger when recharging is finished.
- Do not recharge battery while battery is still warm. After use, battery retains heat. Wait until it cools down before charging.
- Do not allow any metal part to short circuit the receiver batteries or other electrical/electronic device on the model.
- Immediately stop running if your RC model gets wet as may cause short circuit.
- Please dispose of batteries responsibly. Never put batteries into fire.

## EQUIPMENT RECOMMENDED (NOT INCLUDED)

- Radio Transmitter
- Radio receiver
- Batteries for Transmitter
- Electronic Speed Control
- Steering Servo
- Brushless Motor System
- Pinion Gear (48P)
- 7.4V, 2 Cell Li-Po (Single Pack)
- 1/10 Touring Car Body Shell
- 1/10 Touring Car Tire Set

## TOOLS RECOMMENDED (NOT INCLUDED)

- 1.5mm, 2.0mm, 3.0mm Allen Wrench
- 5.5mm & 7.0mm Hex Socket Wrench
- Modelers Craft Knife
- Turnbuckle Wrench
- Calipers/Ruler
- Camber Gauge
- Battery Strapping Tape
- Instant Glue/Thread Lock
- Shock & Gear Diff. Oil
- Joint Grease
- Paint (for Bodyshell)

## NOTE:

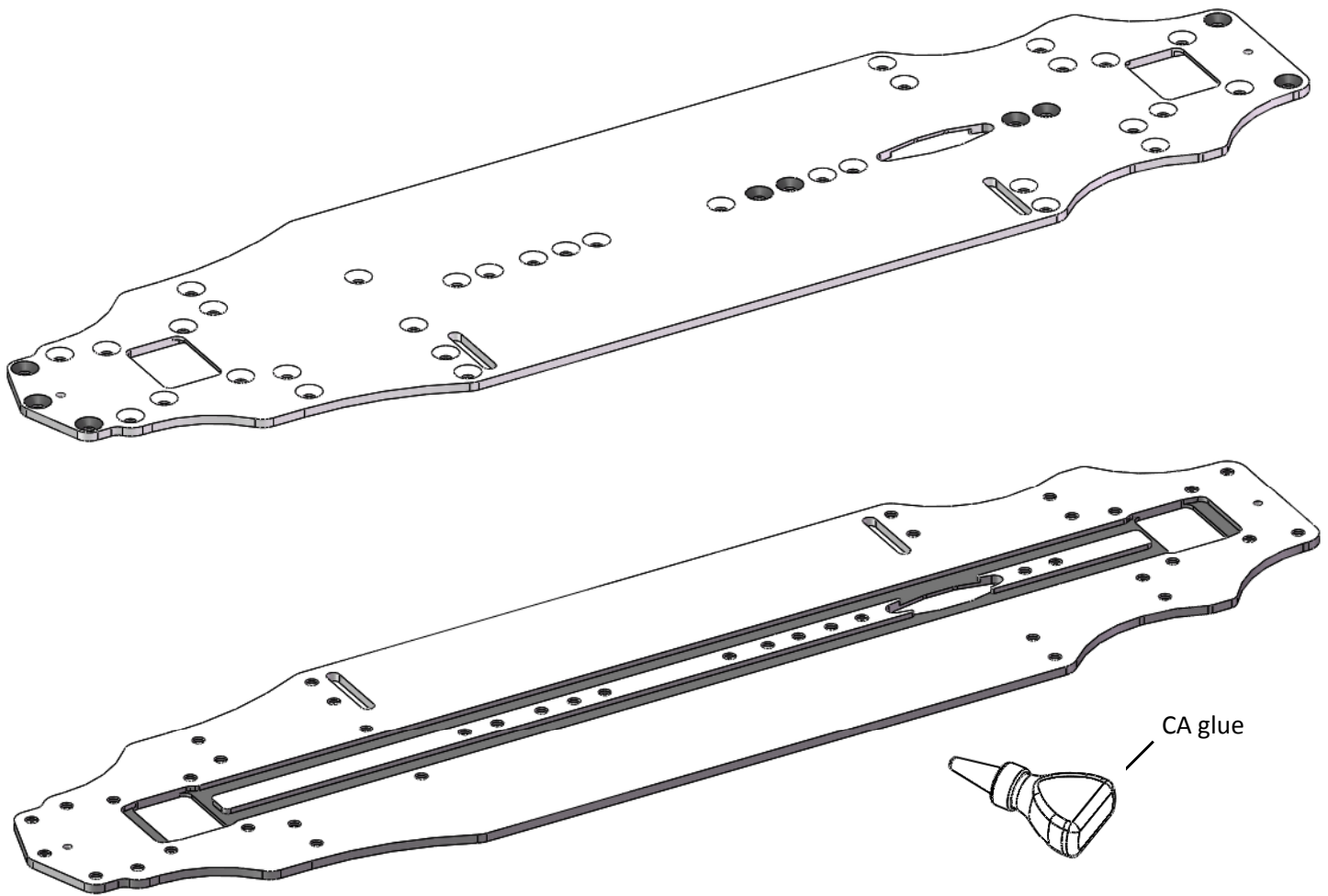
- The Sabre S4 chassis uses the best available components. All replacement parts can be purchased from your local hobby or model shops who carry our products.
- This instruction manual contains a blank setup sheet for your own setup record.

**Enjoy building and driving your Sabre S4S!!**

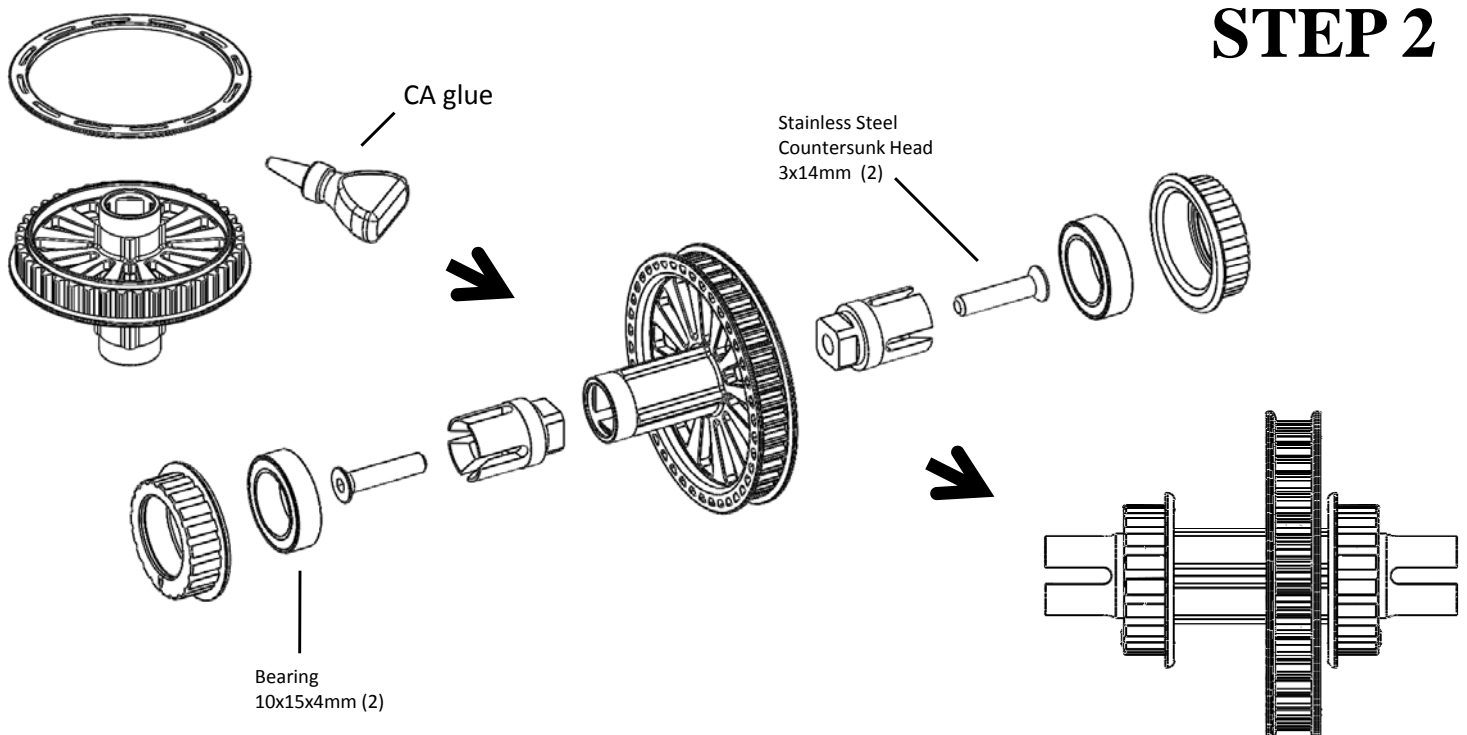
**4WD**  
**Sabre S4S**  
**SINGLE BELT DRIVE TRAIN**

# Sabre 4WD - Single Belt 1/10 Touring Car Kit

## STEP 1



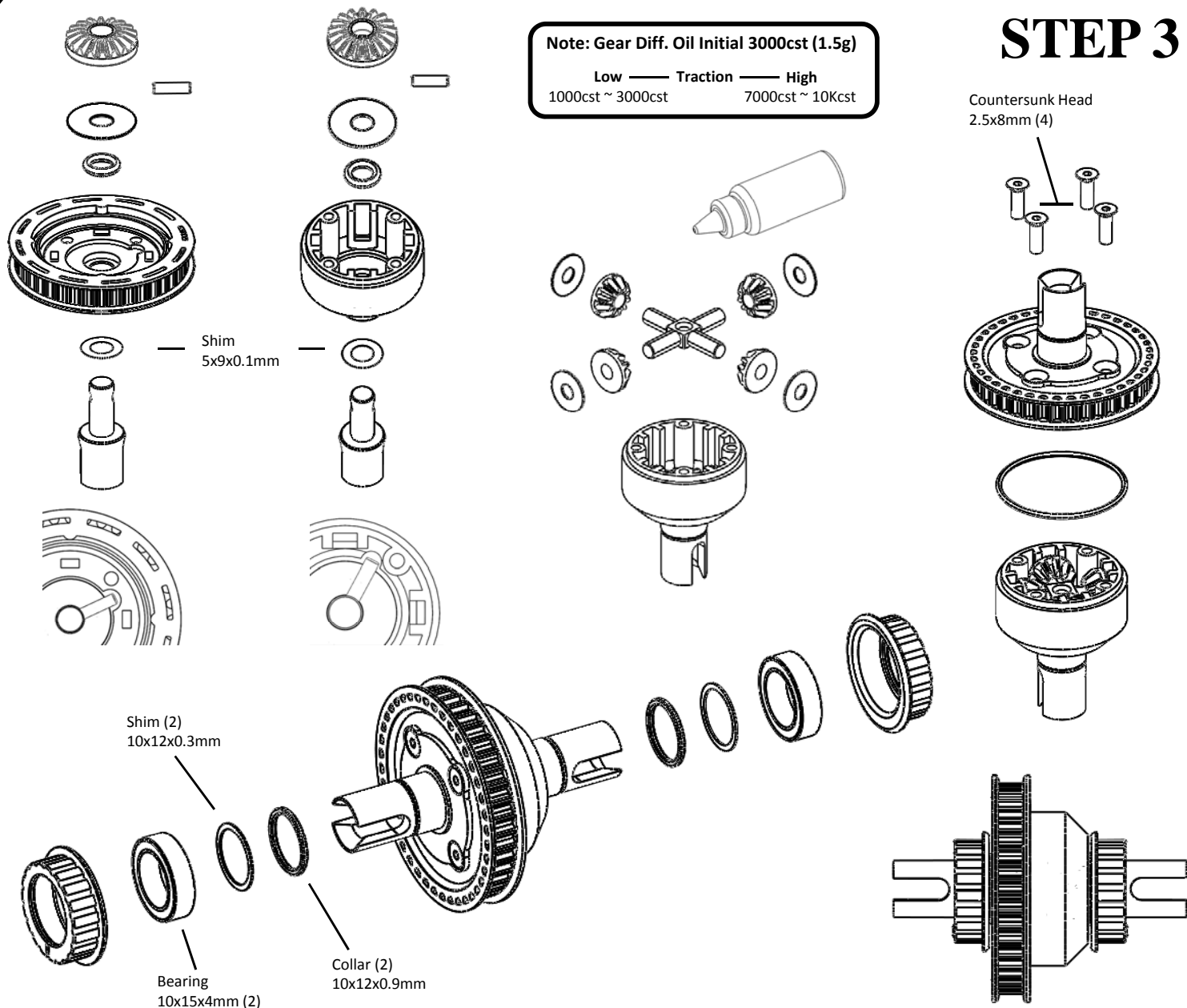
## STEP 2



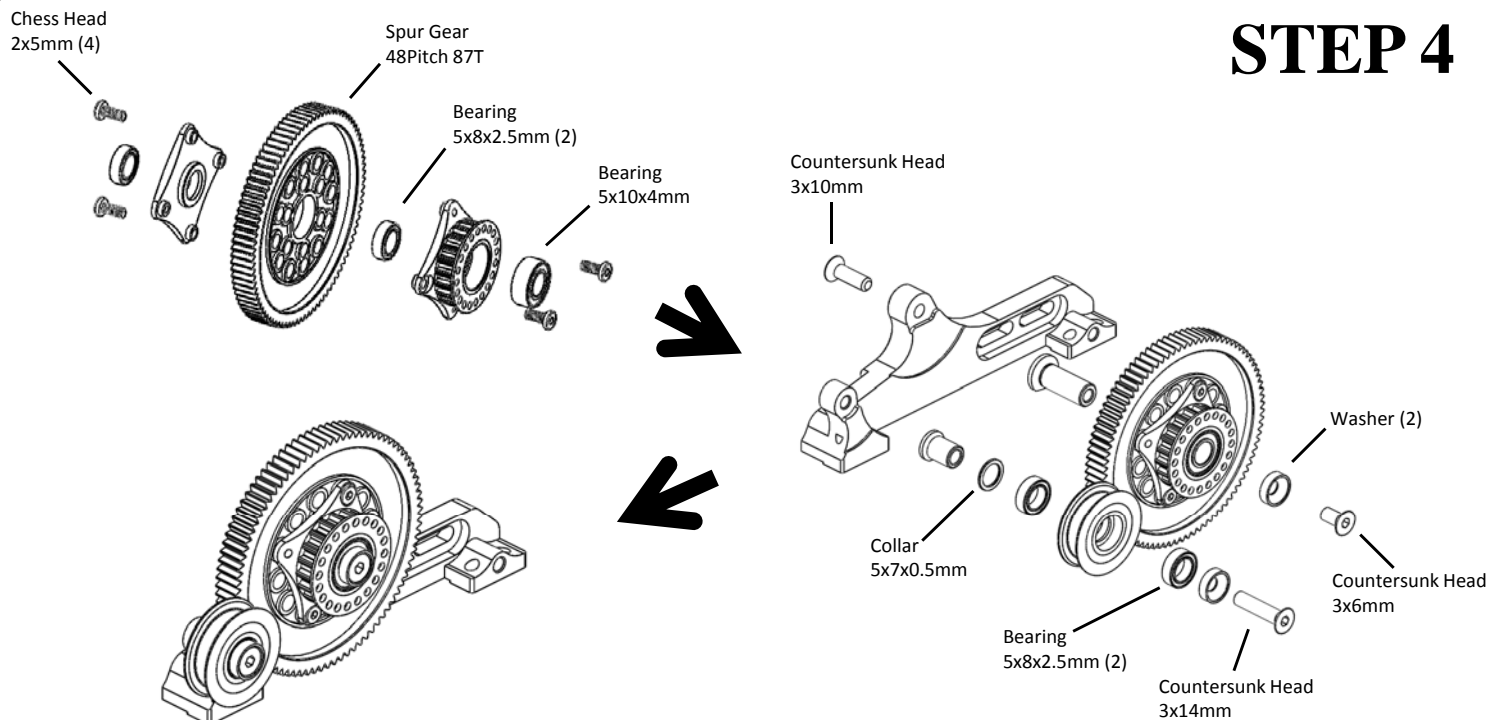
# STEP 3

Note: Gear Diff. Oil Initial 3000cst (1.5g)

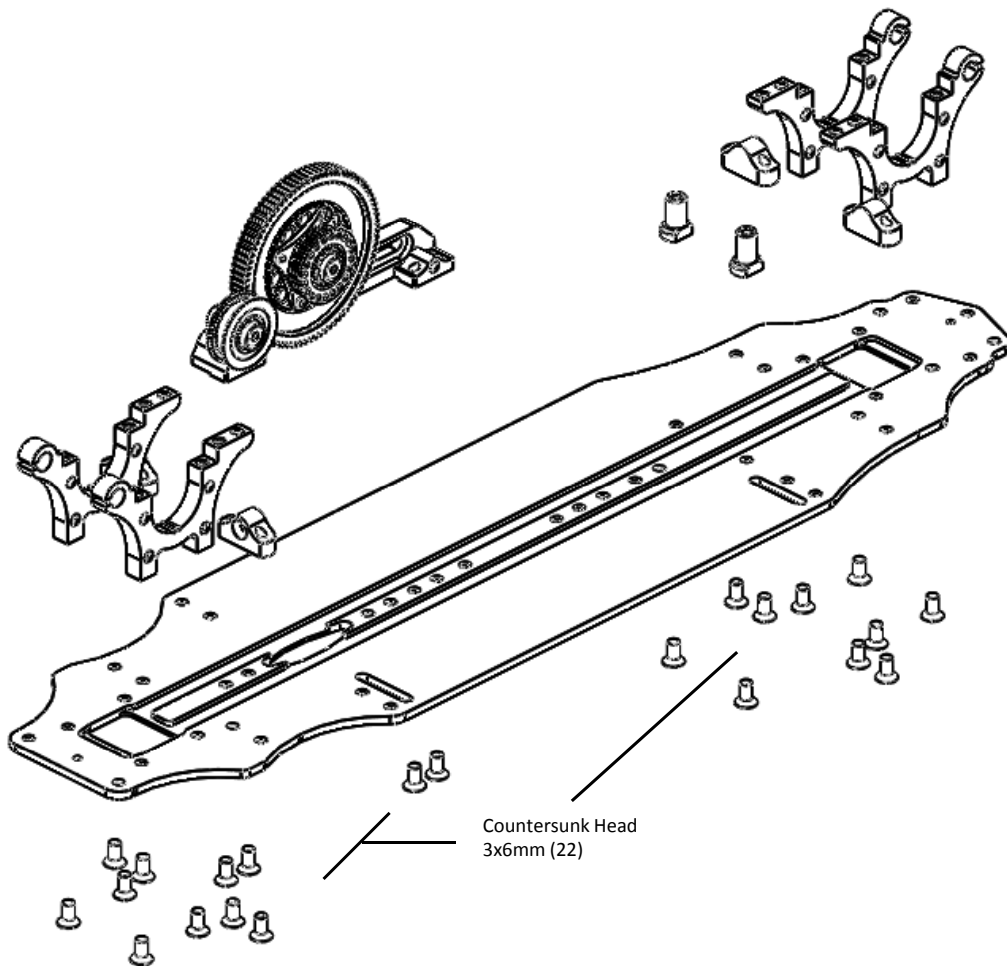
Low ——— Traction ——— High  
1000cst ~ 3000cst      7000cst ~ 10Kcst



# STEP 4

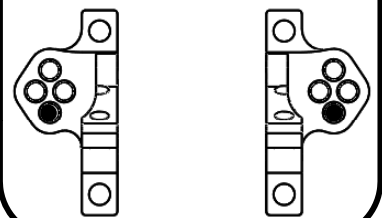


# STEP 5



Countersunk Head  
3x6mm (22)

Front & Rear  
Camber Link Position



Countersunk Head  
3x8mm (8)

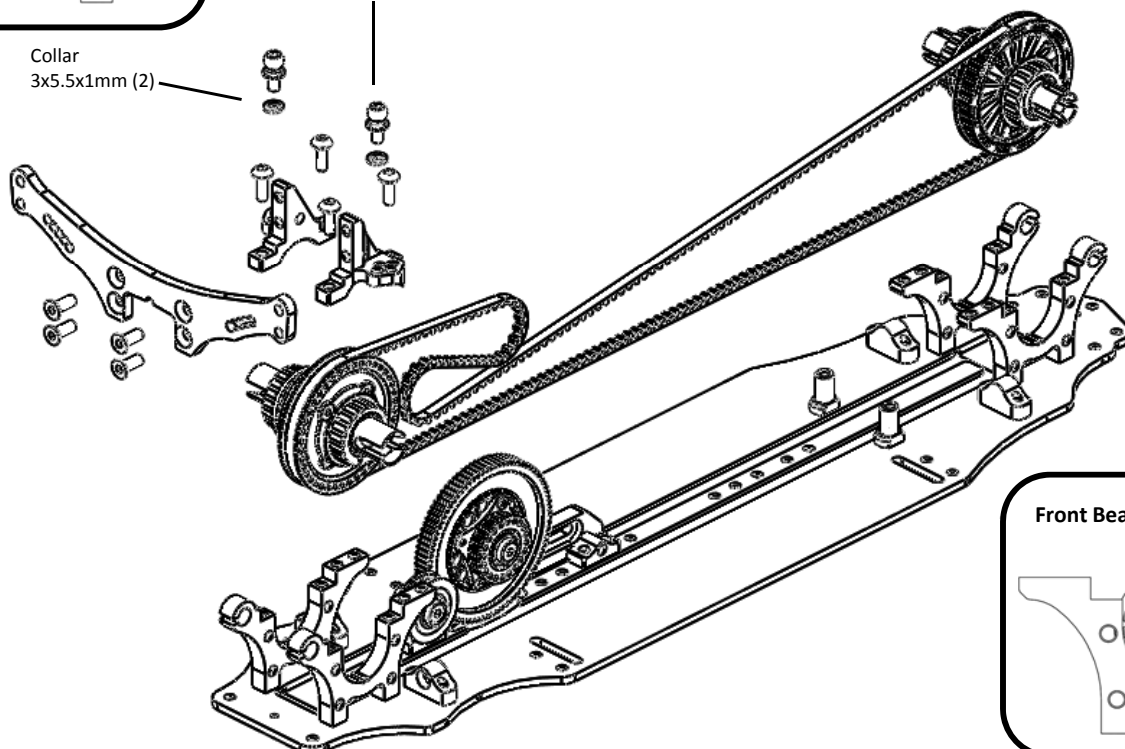
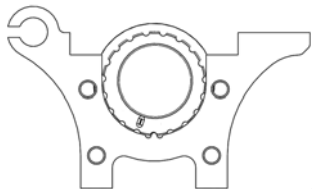
Collar  
3x5.5x2mm (2)

Button Head  
3x8mm (8)

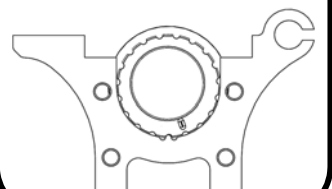
Ball Stud  
5.3x5mm (4)

Collar  
3x5.5x1mm (2)

Rear Bearing Cam Position

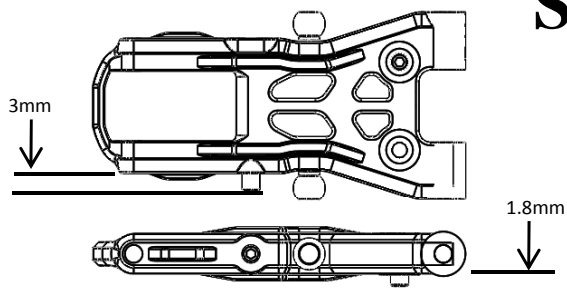
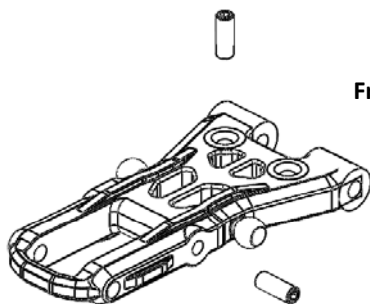


Front Bearing Cam Position



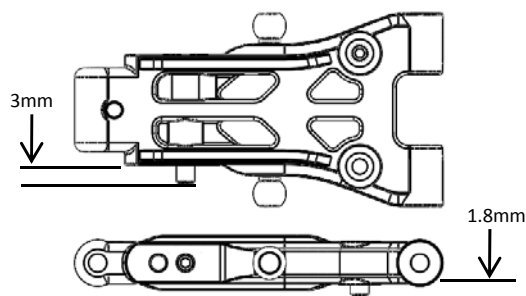
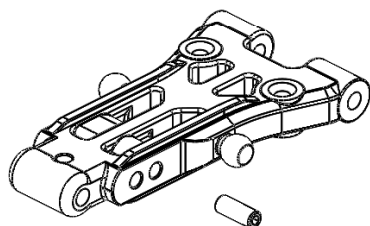
# STEP 6

Front Suspension Arm



Set Screw  
3x8mm (8)

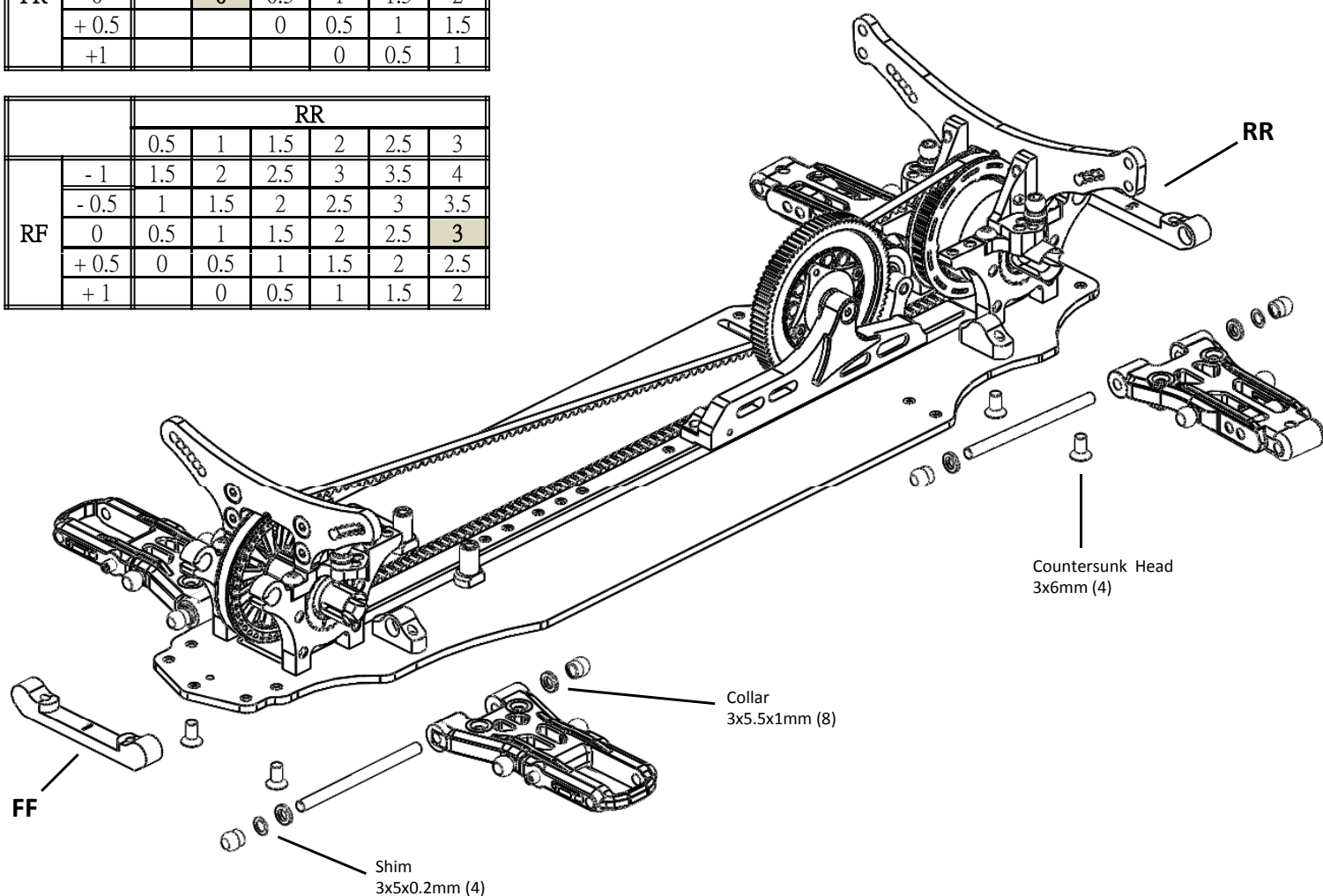
Rear Suspension Arm



Sus. Mount Toe Angle Chart

		FF					
		0.5	1	1.5	2	2.5	3
FR	-1	0.5	1	1.5	2	2.5	3
	-0.5	0	0.5	1	1.5	2	2.5
	0		0	0.5	1	1.5	2
	+0.5			0	0.5	1	1.5
	+1				0	0.5	1

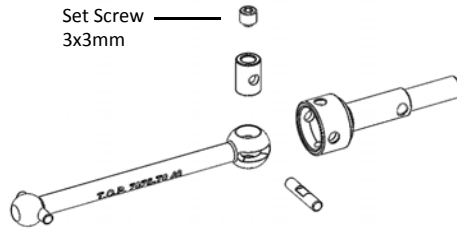
		RR					
		0.5	1	1.5	2	2.5	3
RF	-1	1.5	2	2.5	3	3.5	4
	-0.5	1	1.5	2	2.5	3	3.5
	0	0.5	1	1.5	2	2.5	3
	+0.5	0	0.5	1	1.5	2	2.5
	+1		0	0.5	1	1.5	2



# STEP 7

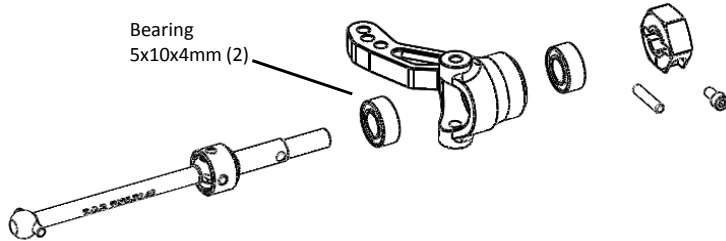
Make 2 pairs  
46 for Front,  
44.5 for Rear

Set Screw  
3x3mm



Make 2 – Steering Block Set

Bearing  
5x10x4mm (2)

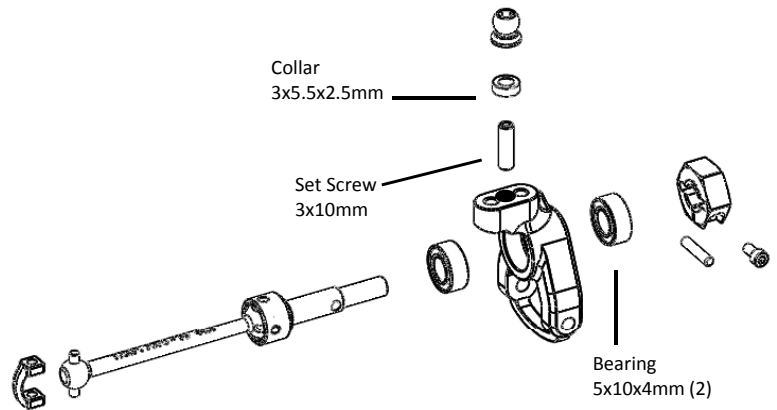


Make 2 – Rear Hub Set

Collar  
3x5.5x2.5mm

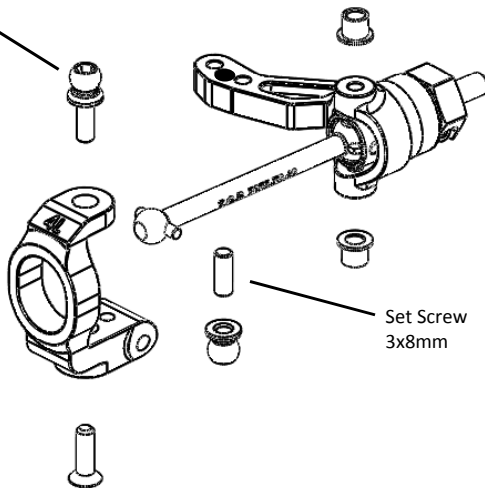
Set Screw  
3x10mm

Bearing  
5x10x4mm (2)

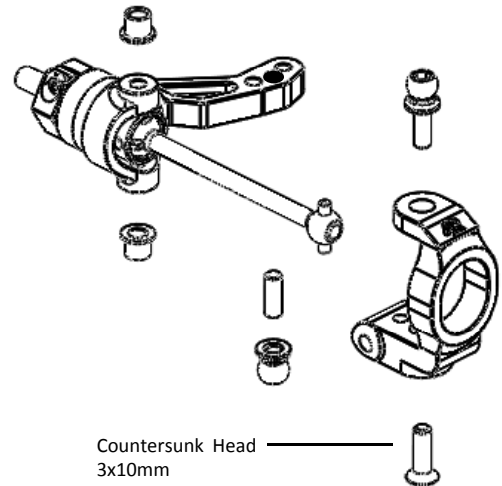


Ball Stud  
5.3x8mm

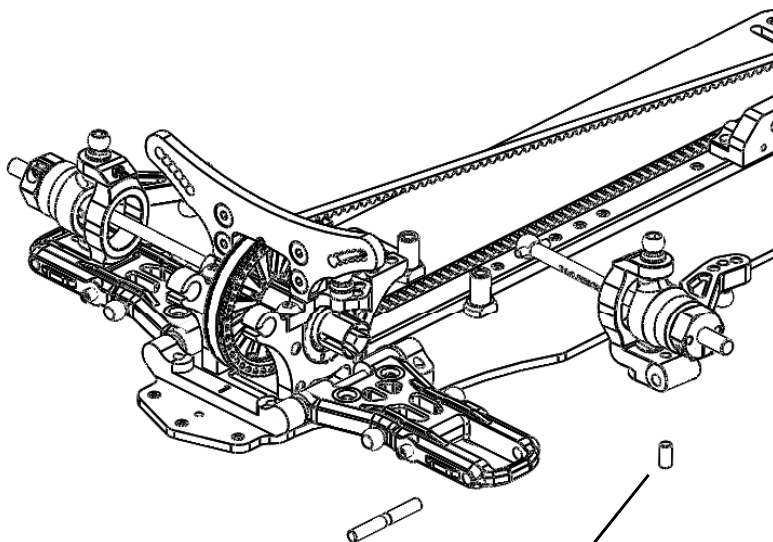
Left ——— Castor Assm. ——— Right



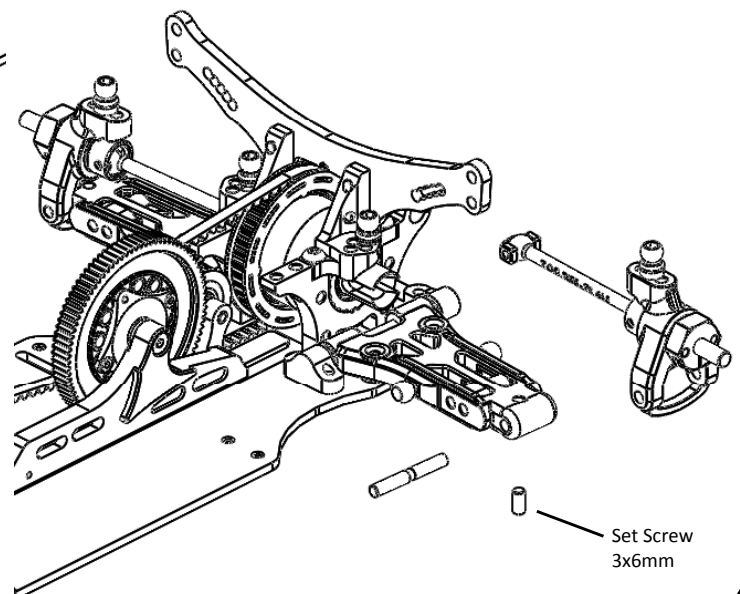
Set Screw  
3x8mm



Countersunk Head  
3x10mm



Set Screw  
3x6mm



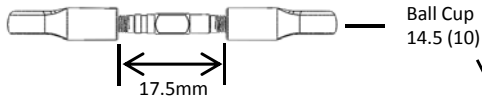
Set Screw  
3x6mm



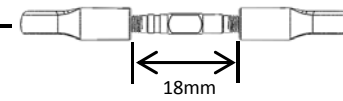
## Steering & Linkages

# STEP 8

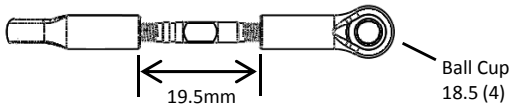
### Make 2 – Front Camber Link



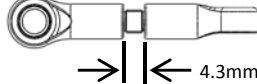
### Make 2 – Rear Camber Link



### Make 2 – Steering Link



### Servo Link



Countersunk Head  
3x8mm (2)

Ball Stud  
5.3x5mm (3)

Collar  
3x5.5x2mm (2)

Shim  
3x5x0.1mm (2)

Note: Use it when necessary

Button Head  
3x6mm (2)

Button Head  
3x6mm (9)

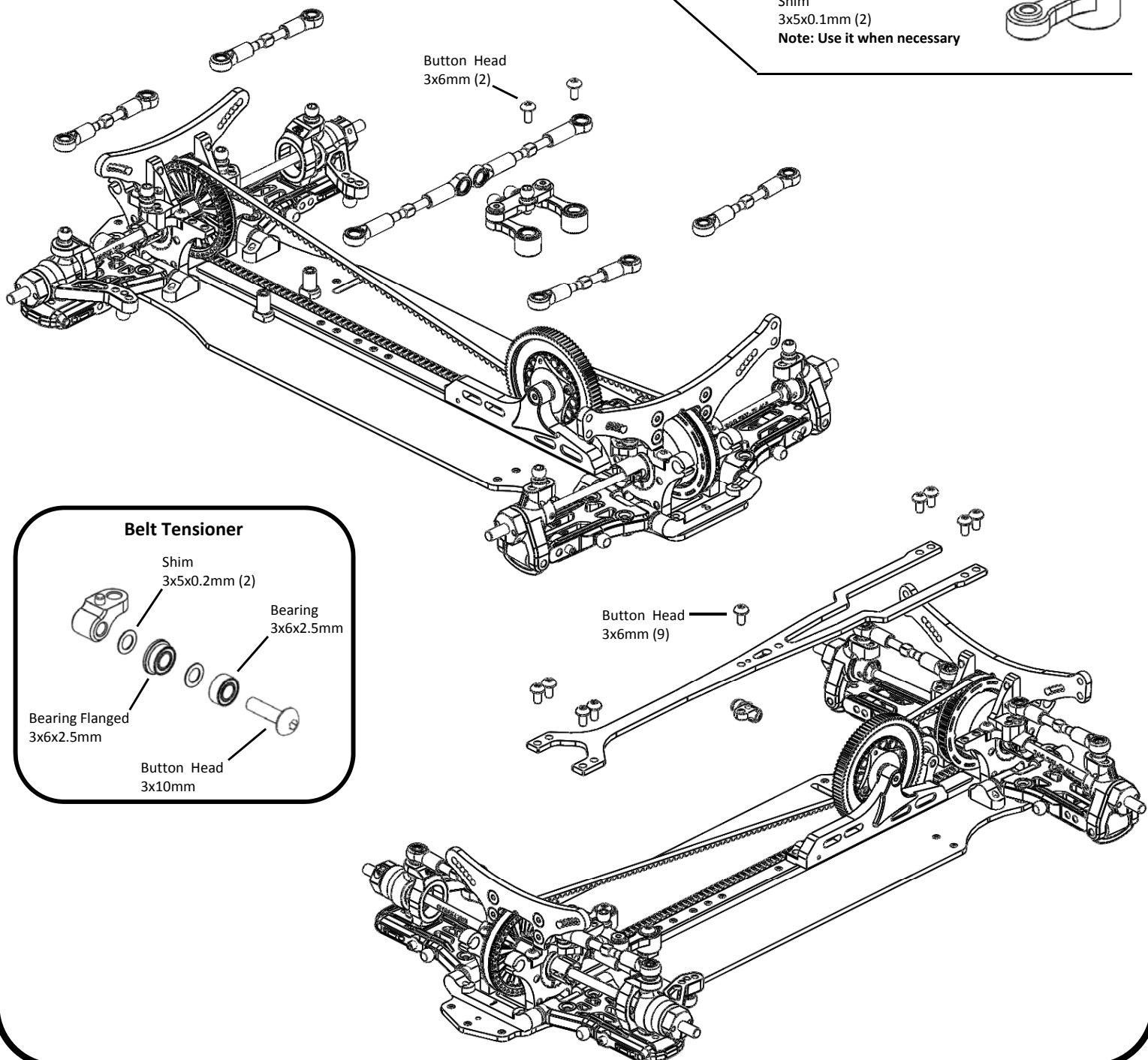
### Belt Tensioner

Shim  
3x5x0.2mm (2)

Bearing  
3x6x2.5mm

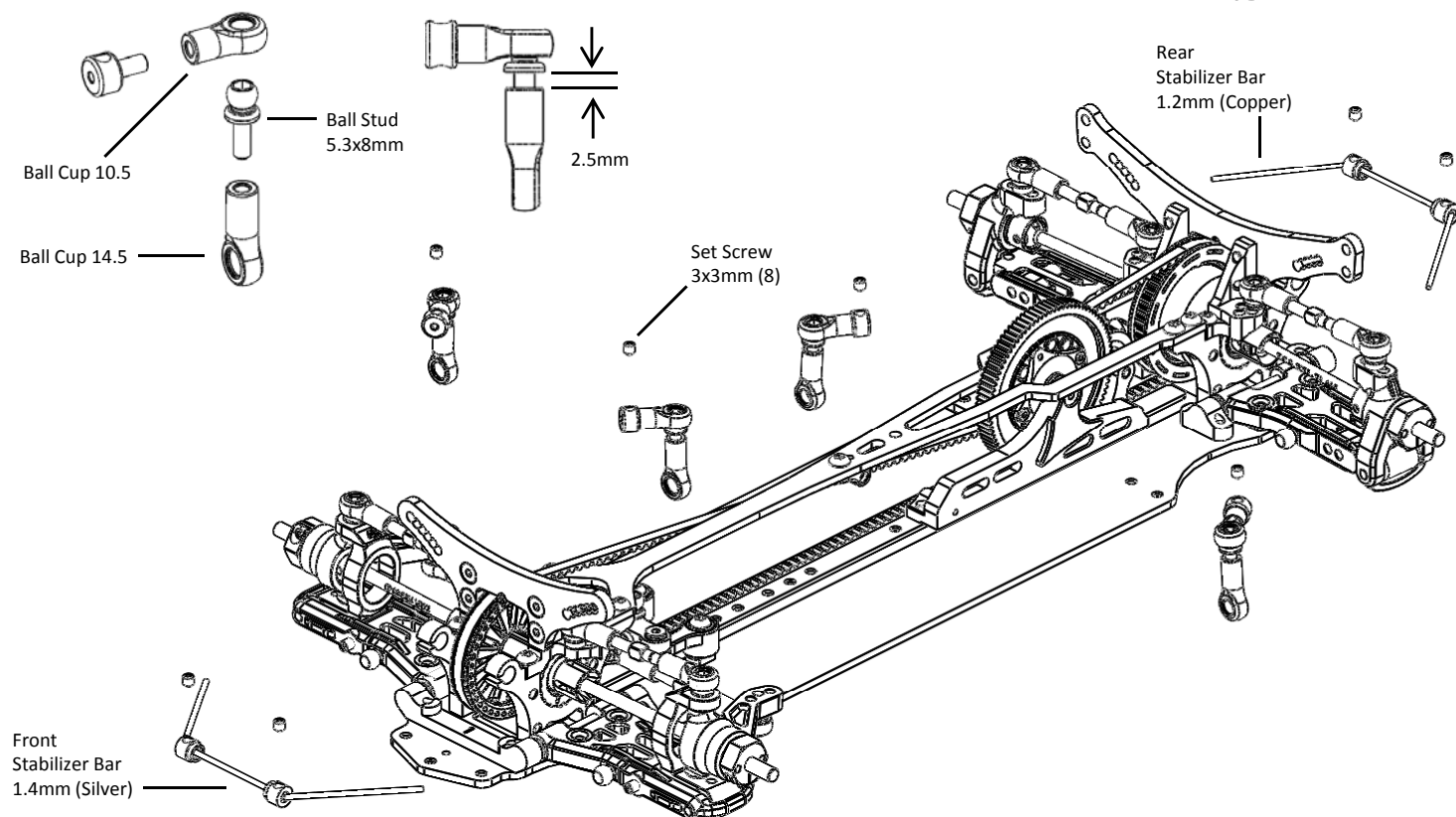
Bearing Flanged  
3x6x2.5mm

Button Head  
3x10mm



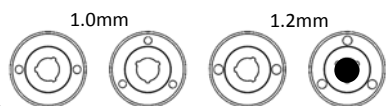
## Make 4 - Stabilizer Bar Link

# STEP 9



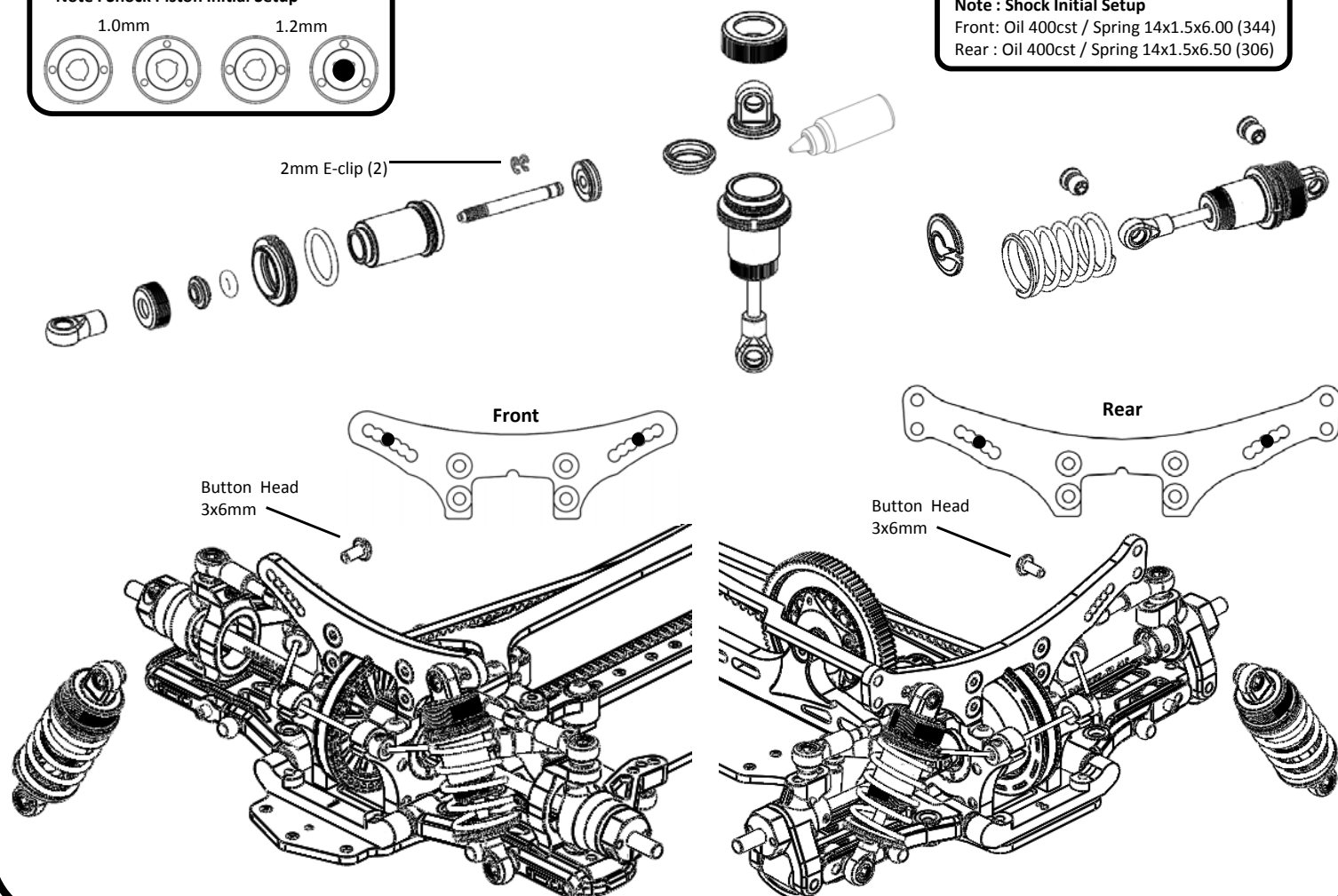
## Make 4 - Shock Assembly

### Note : Shock Piston Initial Setup



### Note : Shock Initial Setup

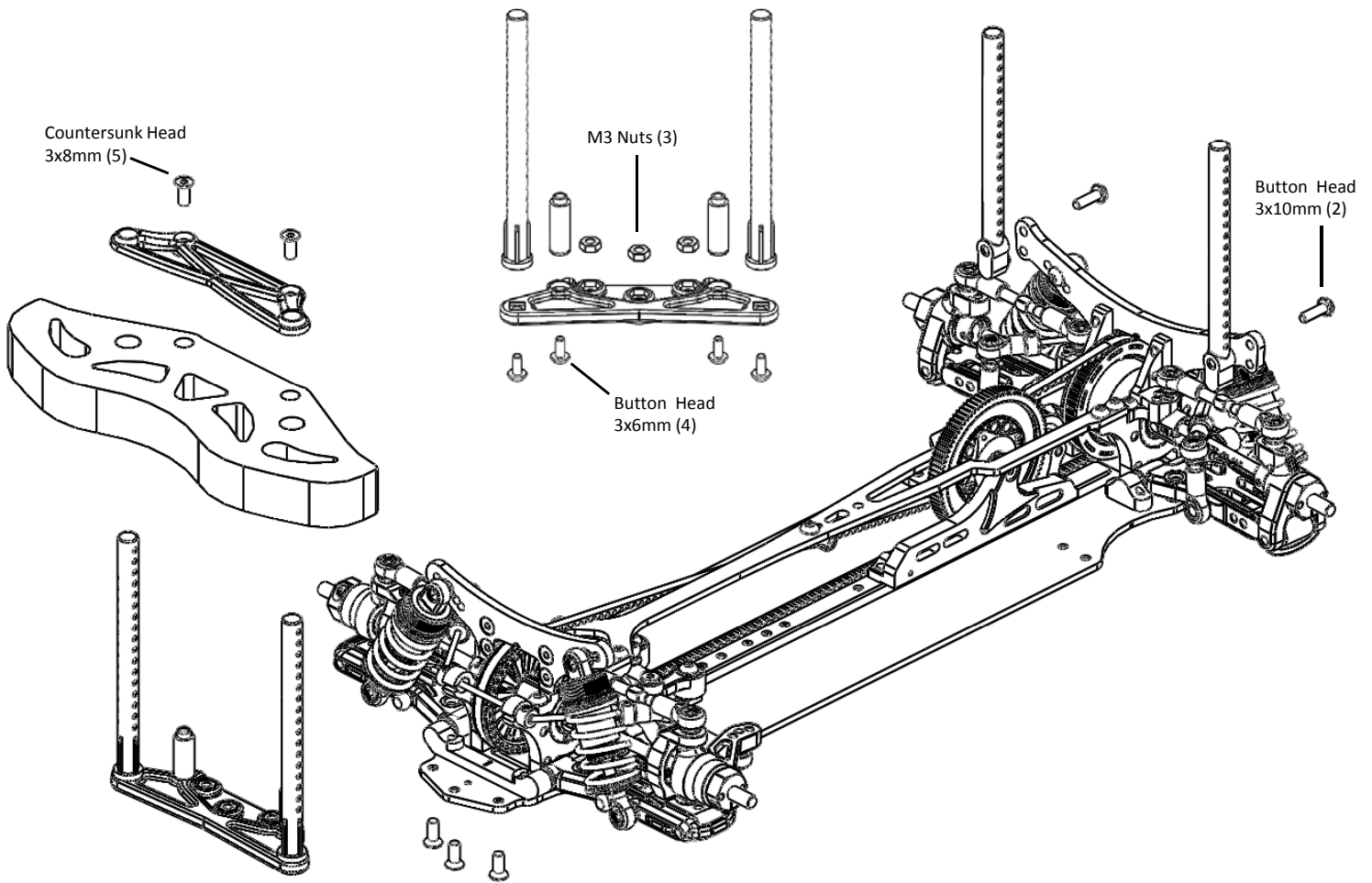
Front: Oil 400cst / Spring 14x1.5x6.00 (344)  
Rear : Oil 400cst / Spring 14x1.5x6.50 (306)



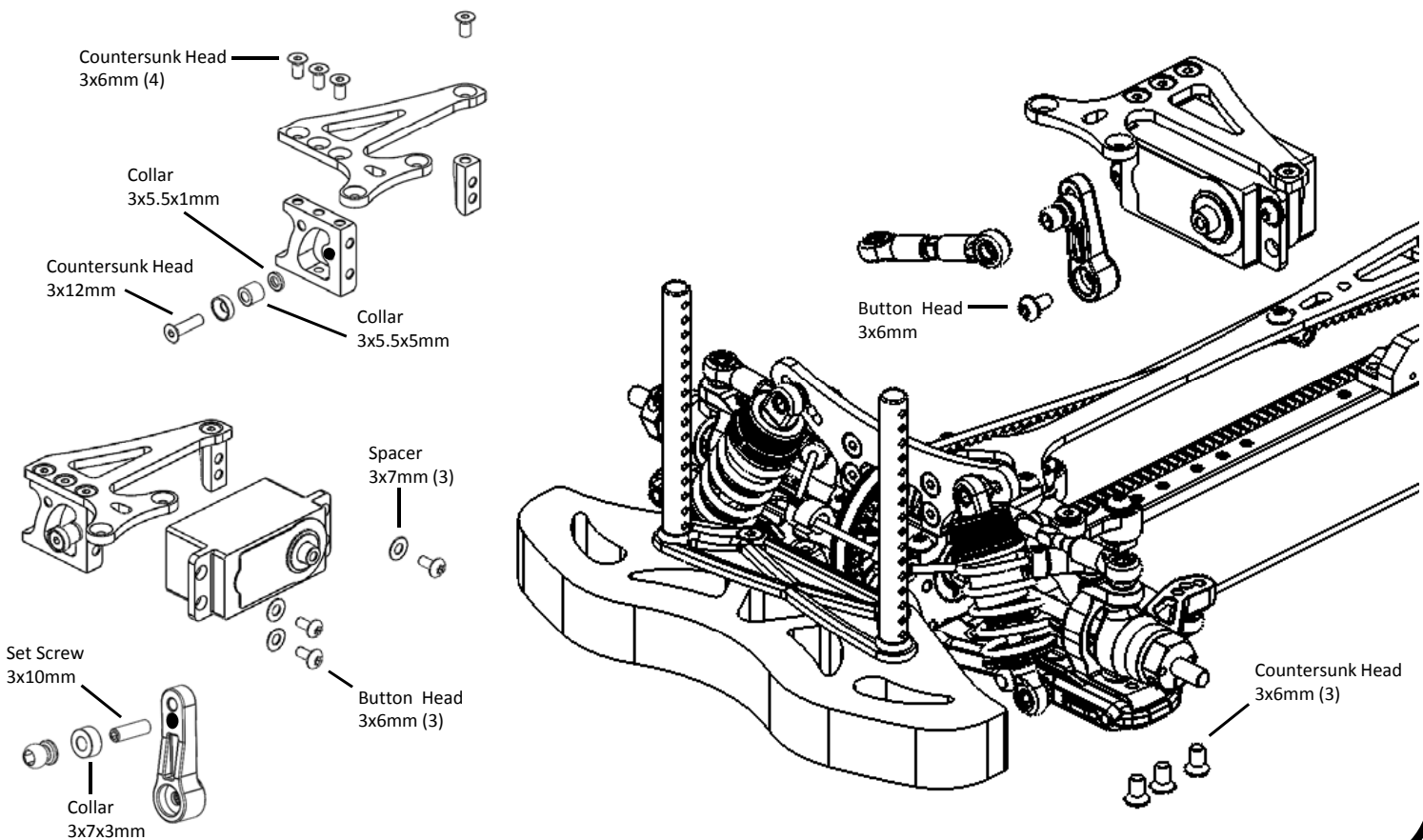


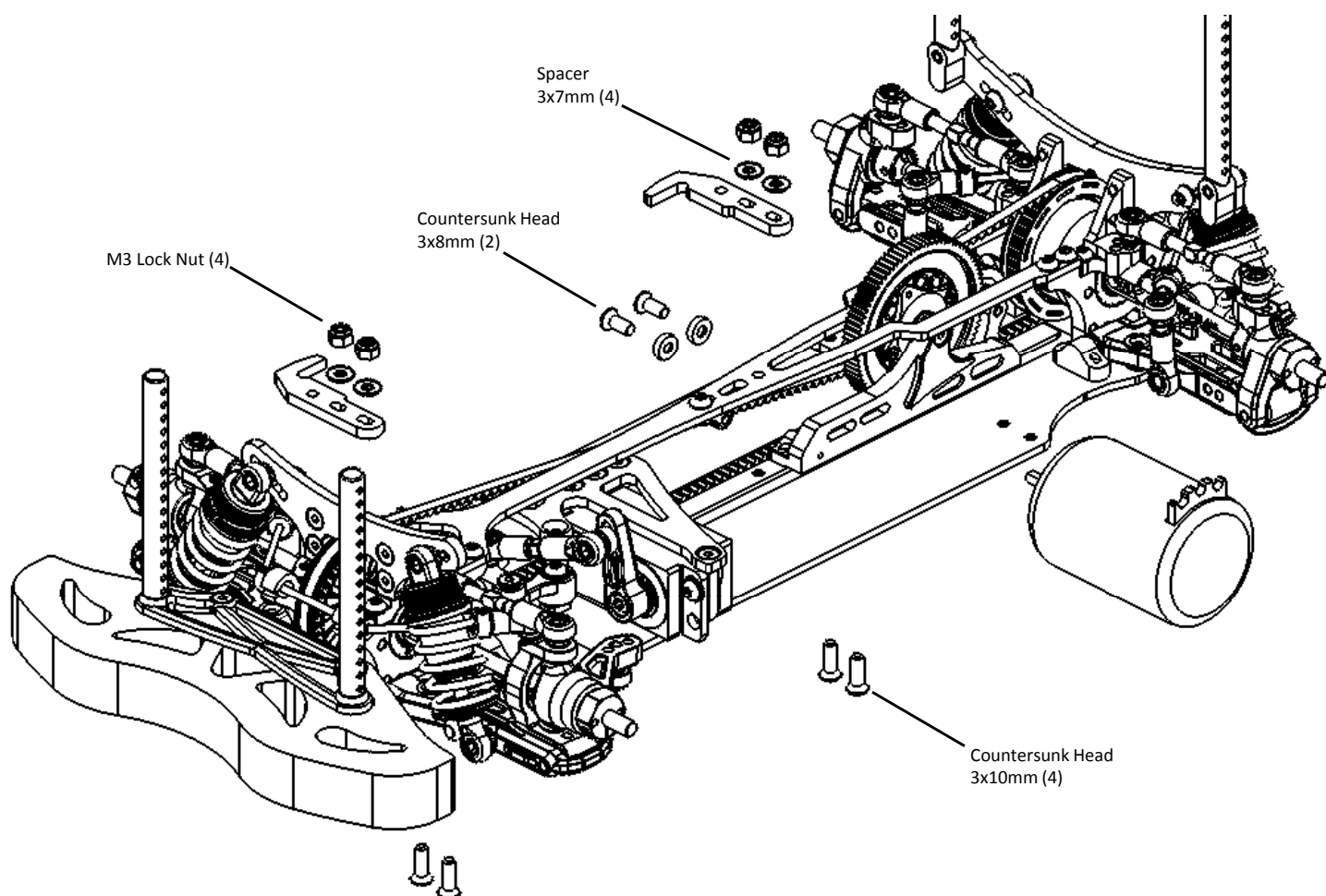
## Bumper & Body Post

# STEP 10

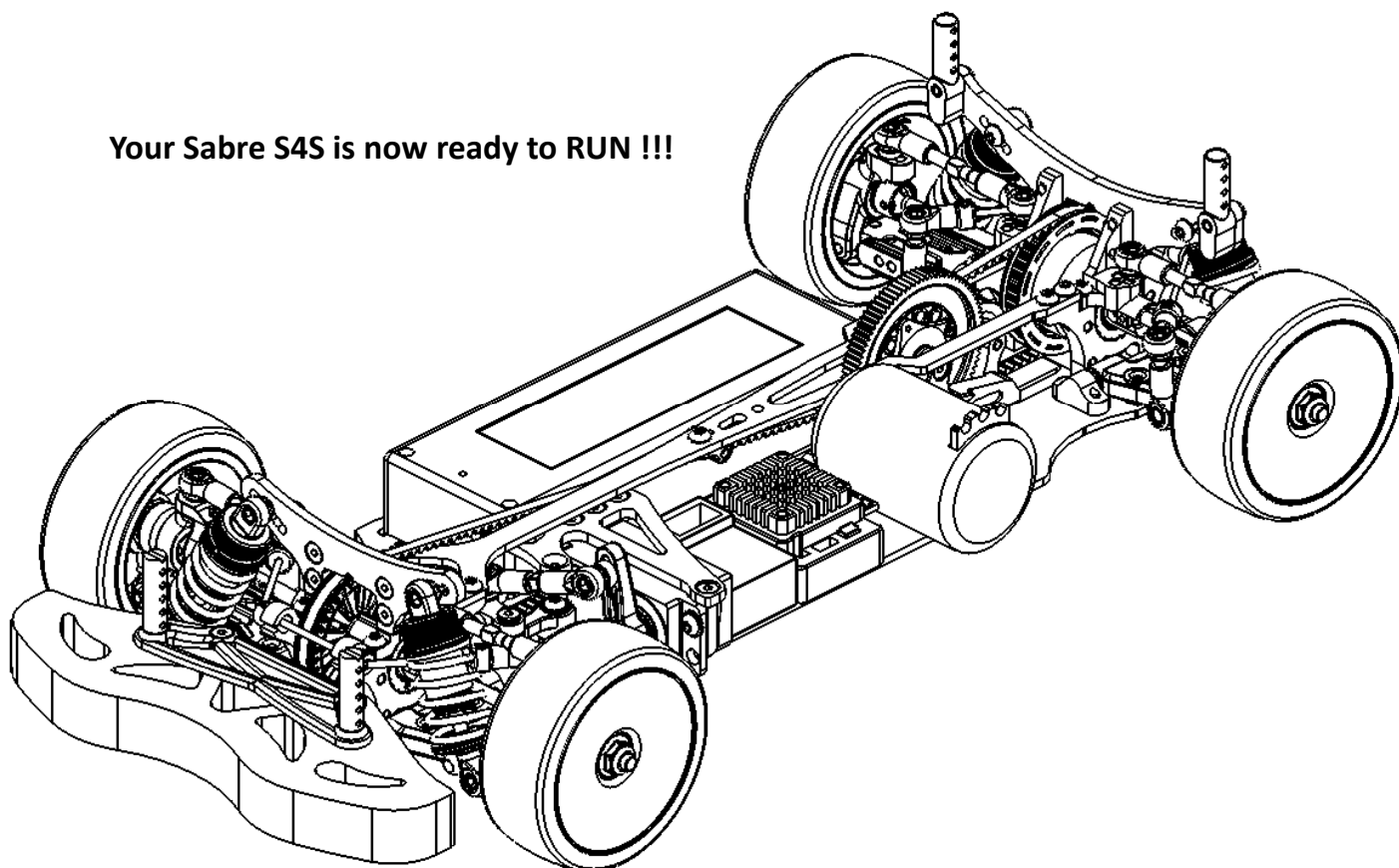


## Sevro Mount & Sevro Arm





**Your Sabre S4S is now ready to RUN !!!**



## S4S Standard Parts List

<b>Chassis</b>	
SK-CH1002	Body Post Set
TC-PCH20H	Foam Bumper
TC-PMPS01	Servo Arm & Mount
TC-PMQS01	Bumper & Body Post Set
TC-PXCH020RD	Optional Top Deck Post
TC-SCH018RD	Sabre Series Bulkhead Cover LH & RH Ver.2 (Red 1pair)
TC-SCH028RD	Sabre - Bulkhead Ver.2 (Red)
TC-SCH031RD	S4 - Steering Post (1pc)
TC-SCH041RD	S4S - Belt Tensioner Set
TC-SCH042BK	S4S - Motor Mount
TC-SCH043RD	S4S - Floating Sevro Mount
TC-SCH044RD	Multi Sevro Mount Post (1pc)
TC-SCHC045	S4S - Main Chassis
TC-SCHC046	S4S - Top Deck
TC-SCHC047	S4S - Floating Sevro Mount Plate
TC-SCHC048	S4S - Front Shock Tower
TC-SCHC049	S4S - Rear Shock Tower
TC-SCHC050	Battery Mount Plate +1.5mm (1pc)

<b>Drive Train</b>	
PA-HSS101	Gear Diff Hard Shim Set ( Large 4pcs & Small 8pcs)
PA-SP0208	Steel Pin 2x8mm (8pcs)
PO-DT0018H	Alloy Gear Diff. Outdrive Hard (2pcs)
PO-DT1009RD	Gear Diff Spacer Set (each 2pcs)
PO-MGAS03	Small Bevel Gear Holder
PO-MGAS04	40T Gear Diff. Case & New O-ring Set
PO-MGBS01	Bevel Gear Set (Large 2pcs & Small 4pcs)
PO-PDT003	Spool Outdrives - Steel (2pcs)
PO-PDT101	40T Gear Differential Set (Belt Drive)
PP-GDRS02	Gear Diff. O-Ring Set (Large 3pcs & Small 6pcs)
TC-PMJ504	Front Spool Pulley Ver.2
TC-PML104	Bearing Cam (4pcs)
TC-SDT030	S4S - Main Belt
TC-SDT031	S4S - Centre Shaft
TC-SDT032RD	S4S - 20T Center Pulley Set
TC-SDT033RD	S4S - 20T Center Pulley (1pc)
TC-SDT035RD	S4S - Main Belt Holder Set
TC-SDT036	S4S - Main Belt Holder Shaft

<b>Drive Shaft</b>	
PO-DT0021	C - Joint Blades (8pcs)
PO-DT1004RD	Clamp Type 5.2mm Hex wheel Adapter Set (Red) (each 4pcs)
PO-DT0016	Universal Pin for Axle Pin Holder (8pcs)
PO-SDT009RD	Aluminium Universal Bone 46mm (Red) (1pc)
PO-SDT018	Axle Shaft (1pc)
PO-SDT019	Locked Universal Join Set (each 1pc)
PO-SDT021RD	Aluminium Universal Shaft Set 46mm (Red) (each 2pcs)
PO-SDT026RD	44.5mm Aluminum Universal Bone (1pc)
PO-SDT027RD	44.5mm Aluminum Universal Bone Set (each 2pcs)

<b>Ball Bearing</b>	
PA-SB0603	Ball Bearing 3 x 6 x 2.5mm (2pcs)
PA-SB0603F	Flanged Ball Bearing 3 x 6 x 2.5mm (2pcs)
PA-SB0805	Ball Bearing 5 x 8 x 2.5mm (2pcs)
PA-SB1005	Ball Bearing 5 x 10 x 4mm (8pcs)
PA-SB1005T	Steel Bearing 5 x 10 x 3mm (2pcs)
PA-SB1510	Ball Bearing 10 x 15 x 4mm (4pcs)

<b>Suspension</b>	
4152-P4S1	King Pin Collar (4pcs)
4216R-P4S1	Sus. Mount 3.0
PO-SSU005RD	Suspension Mount Separate (2pcs)
PO-SSU009RD	Sus. Mount 1
TC-MABS01	Castor Block - 4 (1pair)
TC-MACS01	Steering Block & Rear Hub Ver.2 (each 1pc)
TC-MACS02	Steering Block & Rear Hub Ver.3 (each 1pc)
TC-PMES01	Suspension Arm F&R (each 1pc)
TC-PSU001	23mm Hinge Pin (2pcs)
TC-SSU001	Mounting Ball (8pcs)
TC-SSU002	44mm Hinge Pin (2pcs)

<b>Shock Absorber</b>	
TC-PMMS02	Shock Parts
TC-PMRS01	Shock Piston Parts
TC-PSH002	Shock Bladder (4pcs)
TC-PSH008	Shock Shaft Ver.2 (2pcs)
TC-PSH101RD	Shock Body Set Ver.2 (each 1pc)
TC-PSHS01RD	Shock Set Ver.2 (2 sets)

<b>Shim</b>	
PA-100305	3 x 5 x 0.1,0.2,0.3mm Shim (each 10pcs)
PA-100507	5 x 7 x 0.1,0.2,0.3mm Shim (each 10pcs)
PA-101012	10 x 12 x 0.1,0.2,0.3mm Shim (each 10pcs)

<b>Shock Spring</b>	
PS-TR15600	Gamma Shock Spring (14 x 1.5 x 6.00) 344gf/mm , 19.2lb/in
PS-TR15650	Gamma Shock Spring (14 x 1.5 x 6.50) 306gf/mm , 17.1lb/in

<b>Spur Gear</b>	
SG-K48087	Spur Gear 48P 87T

<b>Stabilizer</b>	
4252R-SET4	Stabilizer Retainer (4pcs)
PA-HBS0508	5.3 x 8mm Ball Stud (5pcs)
TC-PSB012	1.2mm Stabilizer Bar (2pcs)
TC-PSB014	1.4mm Stabilizer Bar (2pcs)
TC-PSU003RD	Threaded Sway Bar Adjuster (2pcs)

<b>Steering</b>	
TC-SCH029RD	Bell Crank Bridge (included bearing)
TC-SCH030RD	Bell Crank Arm (included bearing)

<b>Linkage</b>	
MC-MLK001	3 x 15mm Tie Rod Steel (2pcs)
PA-HBS003	5.3mm Steel Ball ( 5pcs )
PA-HBS0505	5.3 x 5mm Ball Stud (5pcs)
TC-PMHS01	Ball Cup 14.5 (8pcs)
TC-PMHS02	Ball Cup 18.5 (4pcs)
TC-PSU005	3 x 30mm Tie Rod Steel (2pcs)

<b>Accessories</b>	
AW-BW31RD	Small M3 Bevel Washer Red (10pcs)
PA-AP0001	Aetenna Post (2 pcs)
PA-AT0001	Antenna Tube (4 pcs)
PA-ATC001	Antenna Tube Cap (4pcs)
PA-BPS3SV	Short Body Clip M6 Silver (20pcs)
PA-ER0020	M2 E-Clip (30 pcs)
PA-SP0307	Steel Flat Washer Black (10pcs)
PP-010320	Oil Mixed O-Ring for Dampers 30" (10pcs)
PT-NTW001	Nuts & Tie - Rod Wrench
TC-SLB001	Sabre Decal Sticker

<b>Spacer</b>	
AW-S100RD	3mm x 1.0T Collar Red (10pcs)
AW-S150RD	3mm x 1.5T Collar Red (10pcs)
AW-S200RD	3mm x 2.0T Collar Red (10pcs)
AW-M300RD	Ultra Wide 3mm x 3.0T Collar Red (10pcs)
AW-M050RD	5mm x 0.5T Collar Red (8pcs)

<b>Screw</b>	
PA-BM0306BK	Button Head Screw M3 x 6 (10pcs)
PA-BM0308BK	Button Head Screw M3 x 8 (10pcs)
PA-BM0310BK	Button Head Screw M3 x 10 (10pcs)
PA-CM0306BK	Countersunk Head Cap Screw M3 x 6 (10pcs)
PA-CM0308BK	Countersunk Head Cap Screw M3 x 8 (10pcs)
PA-CM0310BK	Countersunk Head Cap Screw M3 x 10 (10pcs)
PA-CM0312BK	Countersunk Head Cap Screw M3 x 12 (10pcs)
PA-CM0314BK	Countersunk Head Cap Screw M3 x 14 (10pcs)
PA-CM2508BK	M2.5x8mm Countersunk Head Screw (8pcs)
PA-SCM205BK	Chess Head Cap Screw M2 x 5 (8pcs)

<b>Nut</b>	
PA-FN00M3	Flat Nut M3 (10pcs)
PA-LN00M3	M3 Steel Nylon Lock Nut (10pcs)
PA-SNF4BK	M4 Steel Serrated Wheel Nut Black (10pcs)

<b>Set Screw</b>	
PA-SS0303BK	Steel Set Screw M3 x 3 (10pcs)
PA-SS0306BK	Steel Set Screw M3 x 6 (10pcs)
PA-SS0308BK	Steel Set Screw M3 x 8 (10pcs)
PA-SS0310BK	Steel Set Screw M3 x 10 (8pcs)

## S4S Option Parts List

<b>Chassis</b>	
PA-BMT01BK	Battery Mount Tape - Black
PA-BMT01RD	Battery Mount Tape - Red
PO-PCH019	Graphite Bumper Upper Plate Set
TC-PCH20L	Foam Bumper - Light Weight

<b>Drive Train</b>	
PO-DT0019	Steel Gear Diff. Outdrive (2pcs)
PO-SDT115	Hybrid Spool Set (S4 & S4 Mini)
TC-SDT029	Spool Outdrive - Steel (2pcs)
TC-PMJ502	Photon One-Way Pulley

<b>Drive Shaft</b>	
PO-DT1006RD	Clamp Type 6.2mm Hex wheel Adapter Set - Red (4pcs)
PO-DT1007RD	Al. Axle Pin Holder - Red (each 4pcs)
PO-DT1008RD	Clamp Type 4.5mm Hex wheel Adapter Set - Red (4pcs)
PO-SDT025RD	Aluminum Universal Bone 43mm - Red (1pc)
PO-SDT028	Steel Universal Bone 44.5mm (1pc)
PO-SDT029	Double-Joint Dog Bone (1pc)
PO-SDT030	Double-Joint Axle (1pc)
PO-SDT031	Double-Joint Holder (1pc)
PO-SDT035	Double-Joint Universal Set 46 (1pair)
PO-SDT037	Double-Joint Insert Set (each 2pcs)
PO-SDT038	Double-Joint Dog Bone 44.5 (1pc)
PO-SDT039	Double-Joint Universal Set 44.5 (1pair)

<b>Ball Bearing</b>	
PC-CB0805	Ceramic Ball Bearing 5x8x2.5mm
PO-CB1005	Ceramic Ball Bearing 5x10x4mm
PO-CB1510	Ceramic Ball Bearing 15x10x4mm
PC-CBST12	Ceramic Ball Bearing Set for T.O.P. S4S (17pcs)

<b>Suspension</b>	
4215R-P4S1	Suspension Mount 2.5 deg. Red
PO-PMZS01	Light Weight CF Suspension Arms F & R (each 1pc)
PO-PSU010RD	Aluminum Steering Block Ver.2 (2pcs)
PO-PSU011RD	Aluminum Rear Hub Ver.2 (2pcs)
PO-SSU001RD	Suspension Mount 1.5 deg. Red
PO-SSU002RD	Suspension Mount 2.0 deg. Red
PO-SSU011RD	Sep. Mount Height Spacer Set 0.5 & 1.0mm Red (each 4pcs)
PO-SSU010RD	Height Spacer Set 0.5 & 1.0mm Red
PO-SSU016RD	Suspension Mount Separate +/-0.5 (1pair)
TC-MABS02	Castor Block - 6 Ver.2 (1pair)
TC-MACS01	Steering Block & Rear Hub (each 1pc)

<b>Shock Absorber</b>	
PO-PSH009RD	Alloy Shock Spring Holder Ver.2 (4pcs)
PO-PSH002	Shock Teflon O-Ring Guide for Shock Ver.2 (4pcs)
PO-PSH102	Optional Shock Piston 1.0 x 2 Holes (4pcs)
PO-PSH103	Optional Shock Piston 1.0 x 3 Holes (4pcs)
PO-PSH122	Optional Shock Piston 1.2 x 2 Holes (4pcs)
PO-PSH123	Optional Shock Piston 1.2 x 3 Holes (4pcs)
PO-PSHT08	Titanium Coated Shock Shaft Ver.2 (2pcs)
PP-010321	Oil Mixed O-Ring for Dampers 40" (10pcs)
PP-XR50RD	Oil Mixed X-Ring for Dampers (10 pcs)

<b>Stabilizer</b>	
PO-PSB101WH	Stabilizer Bar Set 1.1, 1.3 & 1.5 (White) (each 1pc)
TC-PSB010	1.0mm Stabilizer Bar (2pcs)
TC-PSB016	1.6mm Stabilizer Bar (2pcs)
TC-PSB018	1.8mm Stabilizer Bar (2pcs)

<b>Shock Spring</b>	
PS-TR15550	Gamma Shock Spring (14 x 1.5 x 5.50) 393gf/mm , 22.0lb/in
PS-TR15575	Gamma Shock Spring (14 x 1.5 x 5.75) 367gf/mm , 20.5lb/in
PS-TR15625	Gamma Shock Spring (14 x 1.5 x 6.25) 324gf/mm , 18.1lb/in
PS-TR15675	Gamma Shock Spring (14 x 1.5 x 6.75) 289gf/mm , 16.2lb/in
PS-TR15700	Gamma Shock Spring (14 x 1.5 x 7.00) 274gf/mm , 15.3lb/in
PS-TR15725	Gamma Shock Spring (14 x 1.5 x 7.25) 260gf/mm , 14.6lb/in
PS-TR15750	Gamma Shock Spring (14 x 1.5 x 7.50) 248gf/mm , 13.9lb/in
PS-TF17625	Alpha Shock Spring (13 x 1.7 x 6.25) 626gf/mm , 35.0lb/in
PS-TF17650	Alpha Shock Spring (13 x 1.7 x 6.50) 591gf/mm , 33.1lb/in
PS-TF17675	Alpha Shock Spring (13 x 1.7 x 6.75) 560gf/mm , 31.3lb/in
PS-TF17700	Alpha Shock Spring (13 x 1.7 x 7.00) 532gf/mm , 29.8lb/in
PS-TF17725	Alpha Shock Spring (13 x 1.7 x 7.25) 507gf/mm , 28.3lb/in
PS-TF14575	Beta Shock Spring (13 x 1.4 x 5.75) 347gf/mm , 19.4lb/in
PS-TF14600	Beta Shock Spring (13 x 1.4 x 6.00) 325gf/mm , 18.2lb/in
PS-TF14625	Beta Shock Spring (13 x 1.4 x 6.25) 306gf/mm , 17.1lb/in
PS-TF14650	Beta Shock Spring (13 x 1.4 x 6.50) 294gf/mm , 16.2lb/in
PS-TF14675	Beta Shock Spring (13 x 1.4 x 6.75) 274gf/mm , 15.3lb/in

Spur Gear		64 Pitch	
48 Pitch			
SG-K48066	Spur Gear 48P 66T	SG-K64084	Spur Gear 64P 84T
SG-K48069	Spur Gear 48P 69T	SG-K64086	Spur Gear 64P 86T
SG-K48072	Spur Gear 48P 72T	SG-K64088	Spur Gear 64P 88T
SG-K48073	Spur Gear 48P 73T	SG-K64096	Spur Gear 64P 96T
SG-K48074	Spur Gear 48P 74T	SG-K64100	Spur Gear 64P 100T
SG-K48075	Spur Gear 48P 75T	SG-K64104	Spur Gear 64P 104T
SG-K48076	Spur Gear 48P 76T	SG-K64108	Spur Gear 64P 108T
SG-K48077	Spur Gear 48P 77T	SG-K64112	Spur Gear 64P 112T
SG-K48078	Spur Gear 48P 78T	SG-K64116	Spur Gear 64P 116T
SG-K48081	Spur Gear 48P 81T	SG-K64120	Spur Gear 64P 120T
SG-K48084	Spur Gear 48P 84T	SG-K64124	Spur Gear 64P 124T
SG-K48090	Spur Gear 48P 90T		
SG-K48093	Spur Gear 48P 93T		

<b>Linkage</b>	
PO-HBS0505RD	5.3 x 5mm 7075 Ball Studs (5pcs)
PO-HBS0508RD	5.3 x 8mm 7075 Ball Studs (5pcs)
PA-HBS0510	5.3 x 10mm Ball Stud (5pcs)
PO-HBS003RD	5.3mm Alum. Ball - Red (5pcs)
AW-TB0330RD	30mm Aluminum 7075 Tie Rod Red (2pcs)
PO-S4STRS1	S4S - Aluminum Tie Rod Set Red (7pcs)
AW-TB0335RD	35mm Aluminum 7075 Tie Rod Red (2pcs)
PO-SLK3015RD	15mm Al. Tie Rod Red (2pcs)

<b>Accessories</b>	
SS-KM01BK	Middle Size Sevro Savers

<b>Nut</b>	
AW-FN03RD	Aluminum Flat Nut M3 Red (5pcs)
AW-LNF4RD	M4 Aluminum Flange Nylon Nut Red (5 pcs)
AW-SNF4RD	M4 Alum.Serrated Wheel Nut Red (4pcs)

<b>Titanium Screw</b>	
TI-SF0305	M3x5 Titanium Button Head Hex Screws (6 pcs)
TI-SF0306	M3x6 Titanium Button Head Hex Screws (6 pcs)
TI-SF0308	M3x8 Titanium Button Head Hex Screws (6 pcs)
TI-SF0310	M3x10 Titanium Button Head Hex Screws (6 pcs)
TI-SC0305	M3x5 Titanium Countersunk Head Hex Screws (6 pcs)
TI-SC0306	M3x6 Titanium Countersunk Head Hex Screws (6 pcs)
TI-SC0308	M3x8 Titanium Countersunk Head Hex Screws (6 pcs)
TI-SC0310	M3x10 Titanium Countersunk Head Hex Screws (6 pcs)
TI-SC0314	M3x14 Titanium Countersunk Head Hex Screws (6 pcs)

<b>Set Screw</b>	
PA-SS0303	M3x 3mm Stainless Steel Hex Socket Set Screw (10 pcs)
PA-SS0304	M3x 4mm Stainless Steel Hex Socket Set Screw (10 pcs)
PA-SS0306	M3x 6mm Stainless Steel Hex Socket Set Screw (10 pcs)
PA-SS0308	M3x 8mm Stainless Steel Hex Socket Set Screw (10 pcs)
PA-SS0310	M3x10mm Stainless Steel Hex Socket Set Screw (8 pcs)
PA-SS0312	M3x12mm Stainless Steel Hex Socket Set Screw (8 pcs)





## SETUP RECORD

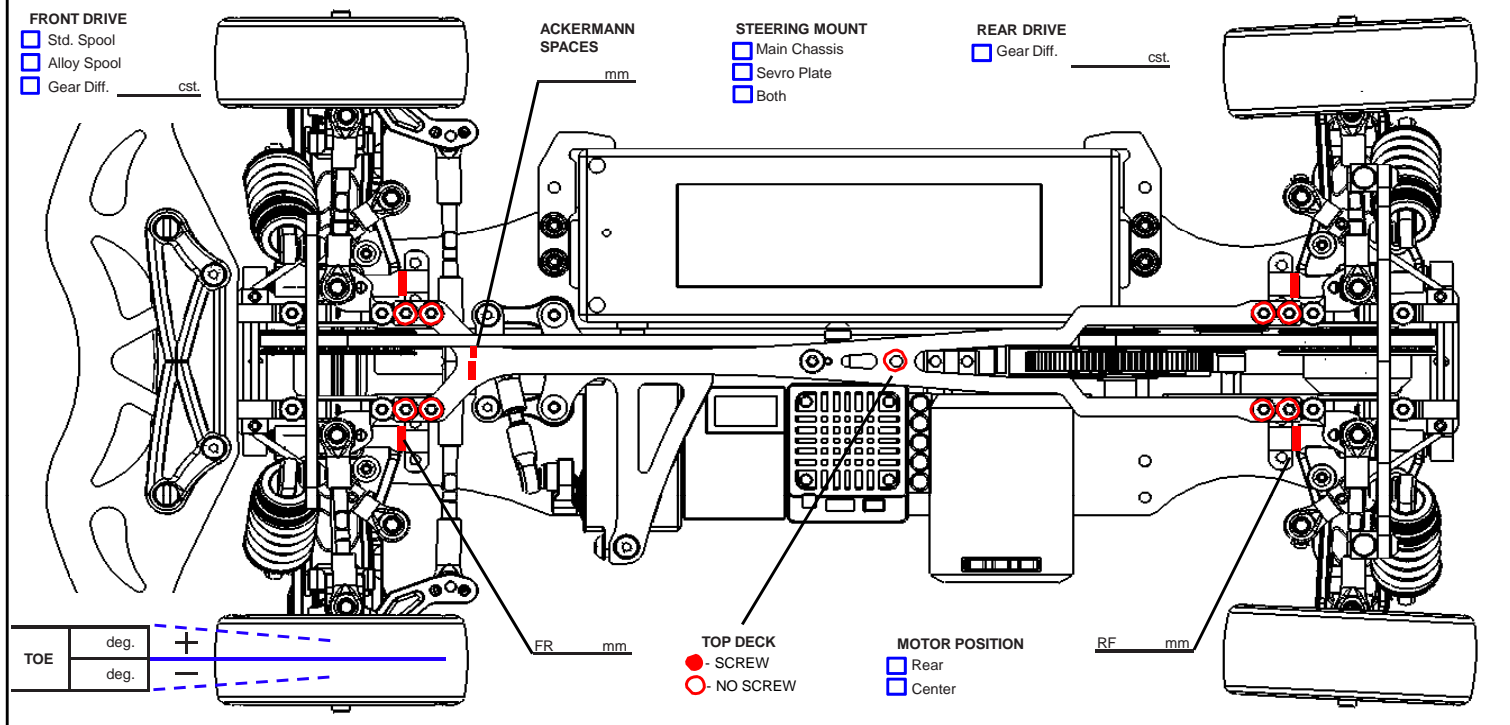
# S4S

Name: \_\_\_\_\_ Date: \_\_\_\_\_

Track: \_\_\_\_\_ Country: \_\_\_\_\_

## SINGLE BELT DRIVE TRAIN

Condition: \_\_\_\_\_ Temperature: \_\_\_\_\_

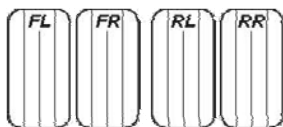


FRONT MEASUREMENTS		FRONT SHOCKS		
RIDE HEIGHT	mm	OIL WEIGHT	wt / cst	
CAMBER ANGLE	deg	PISTON <input type="checkbox"/> Opt. <input type="checkbox"/> 1.0mm <input type="checkbox"/> 2hole		
ROLL BAR	mm	<input type="checkbox"/> Std. <input type="checkbox"/> 1.2mm <input type="checkbox"/> 3hole		
DOG BONE		BLADDER		
NOTES:		SPRING		
		REBOUND		%

REAR MEASUREMENTS		REAR SHOCKS		
RIDE HEIGHT	mm	OIL WEIGHT	wt / cst	
CAMBER ANGLE	deg	PISTON <input type="checkbox"/> Opt. <input type="checkbox"/> 1.0mm <input type="checkbox"/> 2hole		
ROLL BAR	mm	<input type="checkbox"/> Std. <input type="checkbox"/> 1.2mm <input type="checkbox"/> 3hole		
DOG BONE		BLADDER		
NOTES:		SPRING		
		REBOUND		%

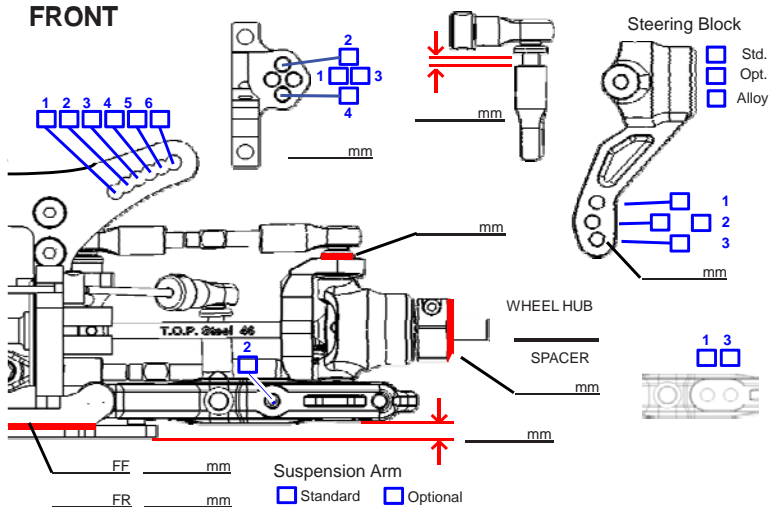
MOTOR	
PINION GEAR	
SPUR GEAR	
BATTERY	
BODY SHELLS	
WING	
ESC SETTING	

	FRONT	REAR
BRAND		
COMPOUND		
INSERT		
WHEEL		
TIRE TREATMENT		



NOTES:

## FRONT



## REAR

