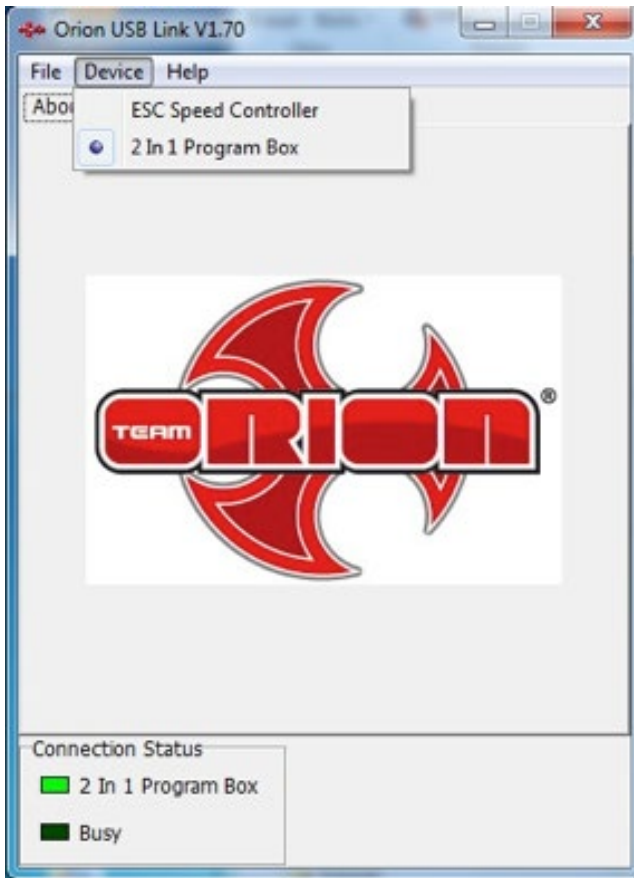
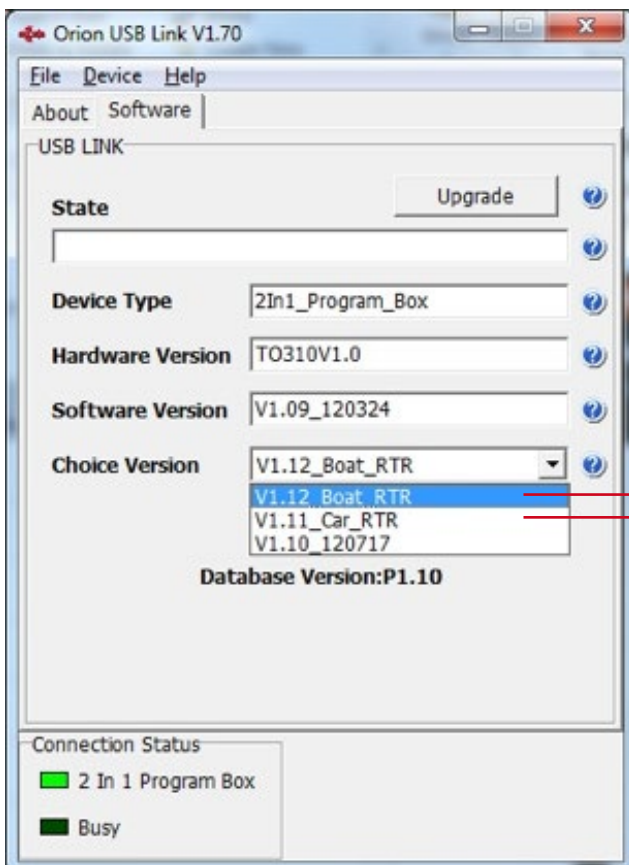




1 To change the program box software, connect the box to the computer via USB (without any ESC connected) and select 2-in-1 program box from the “DEVICE” dropdown menu.



2 Then select the software you wish to program into the box depending on the ESC type you are using.



V1.10_120717

Racing ESC software for
ORI65101-102-103-104-105-107-108-109-115-116

V1.11_Car_RTR

RTR ESC software for
ORI65106-65110-111-112-113-114

V1.12_Boat_RTR

Boat ESC software for
ORI65117-65118

WARNING! When the program box is using the V1.11_Car_RTR or V1.12_Boat_RTR software, the ESC can only be programmed from the box, it does not work with the PC software. The PC software only works with the V1.10_120717 program box software and the ESC compatible with that software.