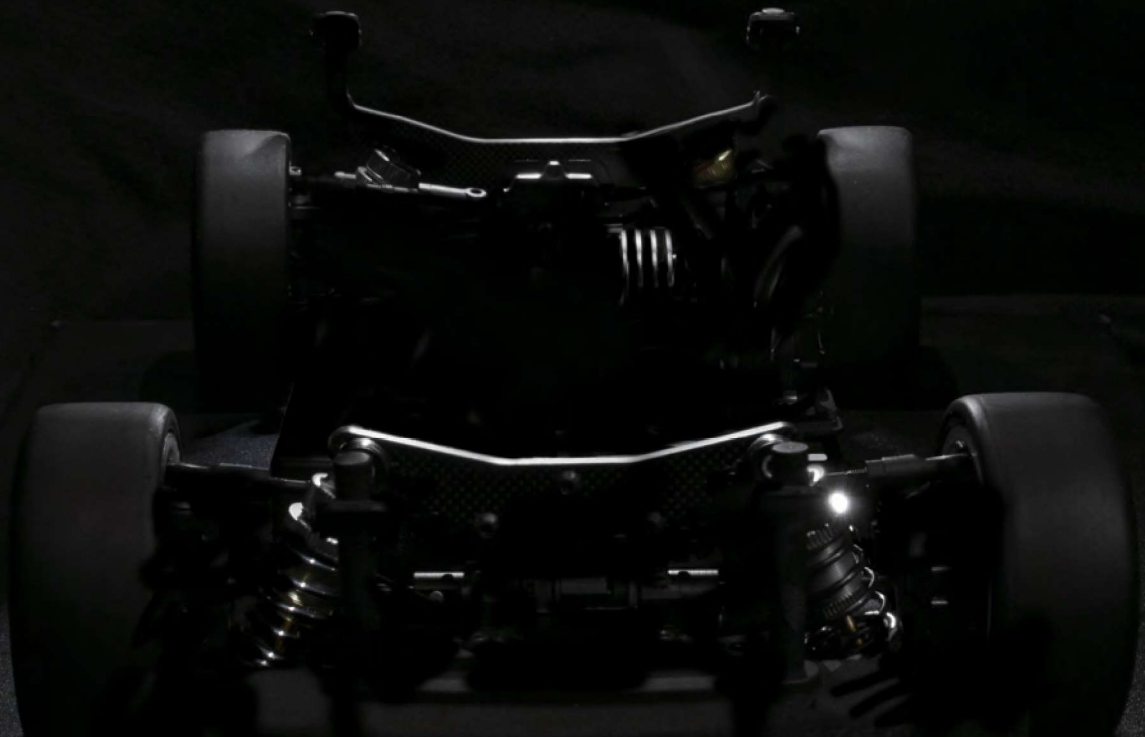


E4RSIII

507007 1/10 Electric Touring Car





Thank you for choosing the Team Magic E4RSIII , Before you start building the E4RSIII , we suggest you read through the instruction manual first. Be sure to check all assembly and performance tips before you start. We hope you enjoy the fine building processes.

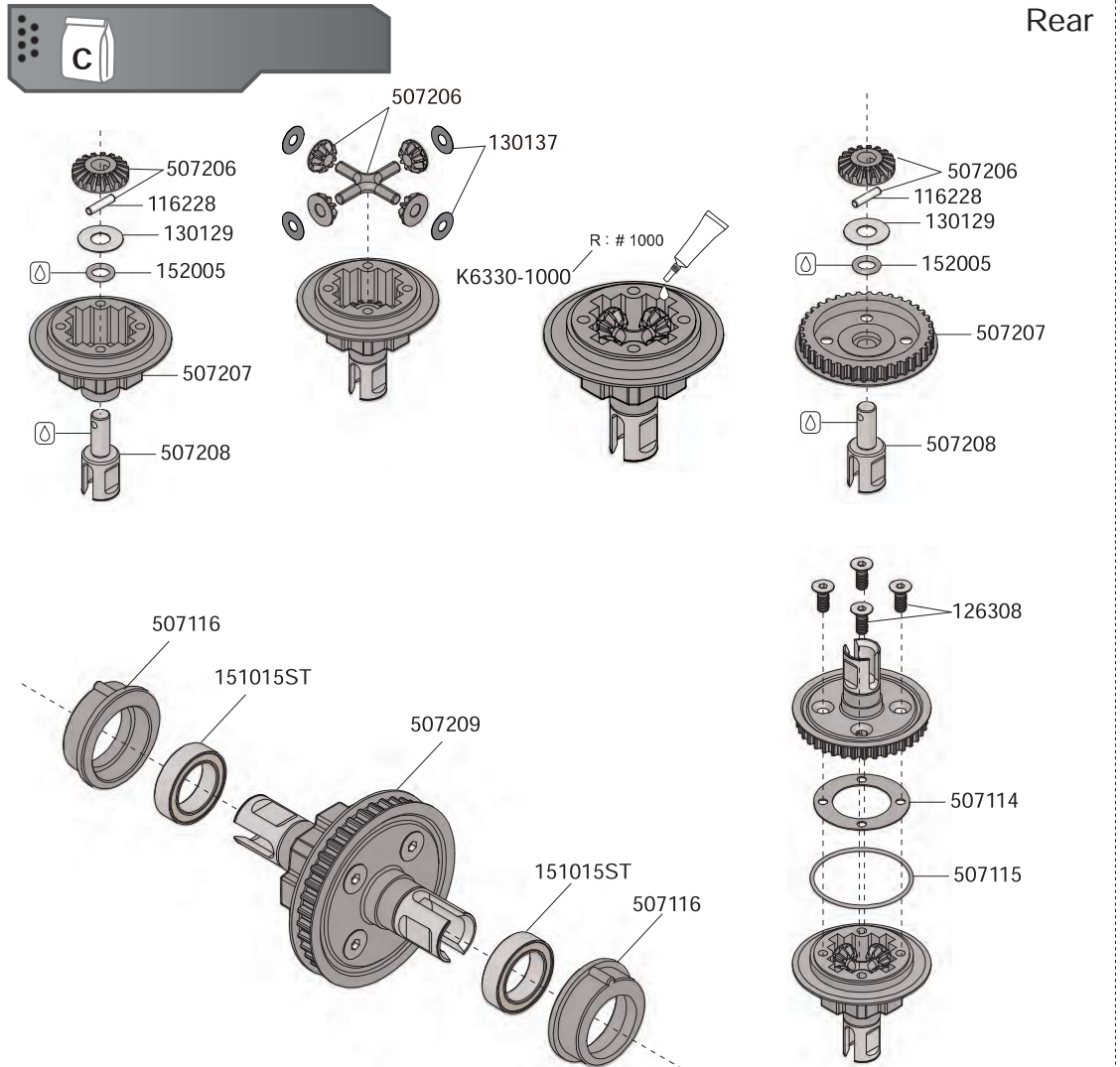
General Building Tips:

- ▶ Read the instruction manual before building.
- ▶ Clear a work area and try to work on a light color towel to avoid missing dropped parts.
- ▶ Don't forge the thread lock. Be certain to use thread-lock on all the machine screws that thread into metal. Put it on the screws that are secured with locknuts and the setscrews that secure the linkage stops, too. Don't skimp on the thread-lock or you'll be searching in the dirt for screws that vibrated loose.
- ▶ Don't over-tighten fasteners. Many assembly problems are caused by over-tightening screws or nuts. Don't use too large a grip. Please go slowly and feel the resistance build. Just snug it up.
- ▶ As you put more time and runs on the car, the suspension arms, and basically anything else that moves, can stretch and wear. Though we have a very rigorous quality control program and make every effort to ensure that the parts have the best possible fit when you get them. Unfortunately there is very little, or nothing we can do to prevent these parts from wearing out. When the arms begin to wear you will notice that some slop develops between the carrier or hub and the arms. This slop can be taken out by shimming the arm, hub or carrier. If you take a look at any of the factory driver's cars you will definitely find that they use shims to take up some of the slop that occurs over a period of time. The shims can also be used on the inside of the suspension arms in the same manner. When shimming the parts, care must be taken not to add too many shims. The parts must still move freely without binding.
- ▶ When it doesn't fit, please double check. If an assembly is not going together correctly, then either there really is a bad fit (e.g. a part is damaged or defective) or a mistake in assembly. Always re-read the instructions when there are any problems. If you cannot figure out what's wrong, always ask dealer, distributor or Team Magic. Don't use force beyond what the instructions call for.
- ▶ Using the right tools makes assembly much easier. The instructions below finely indicate you what tools to get to make things easier. We don't want to scare you by saying that all these tools are required, but you will have an easier time if you have them. Borrow them from a friend to check if necessary.
- ▶ The assembly is arranged so that you will open the bag and finish that bag before you go on to the next bag. Sometimes, you will have parts remaining at the end of a bag. These will become part of the following bags.

A Good Dealer Is Extremely Important!!

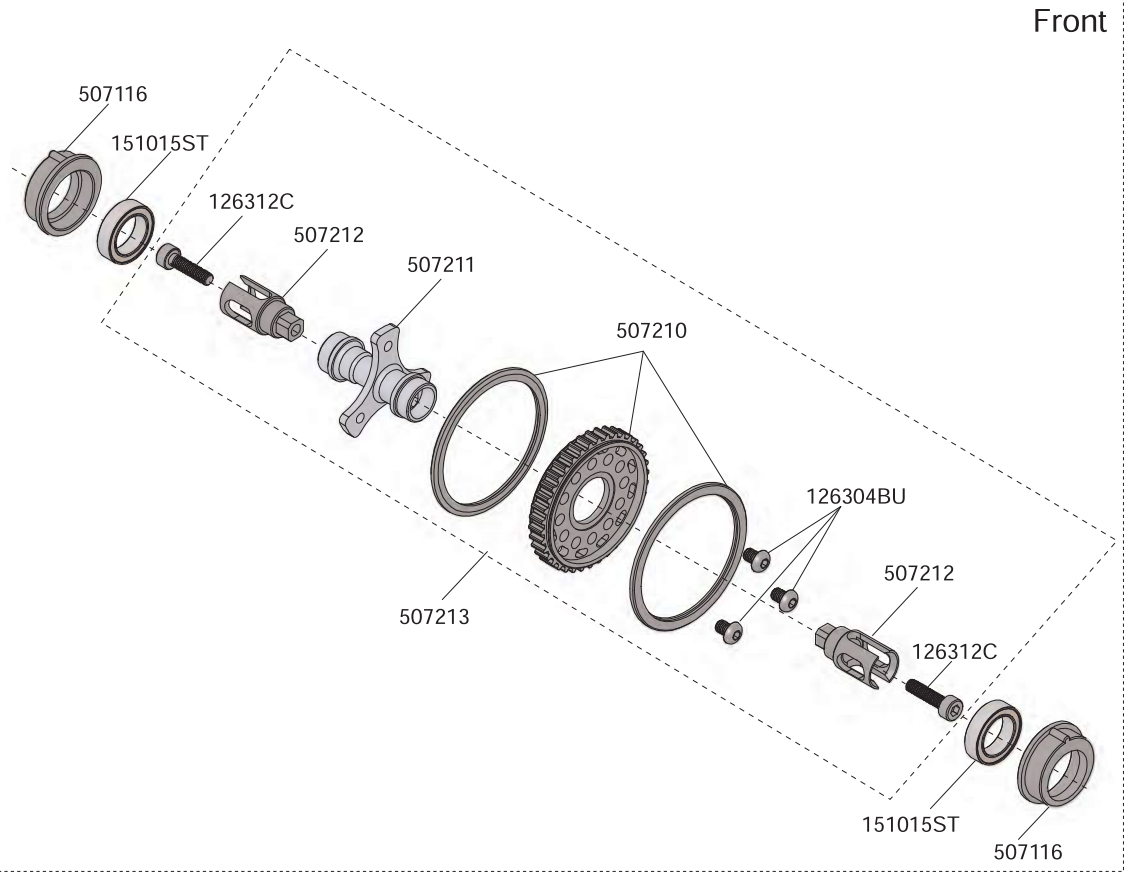
A good hobby dealer can help you with most assembly problems you might encounter. This is the main reason why you should buy your kits from a good dealer rather than from the cheapest dealer. Bring your problematic parts to the dealer and, most likely, you'll walk away soon thereafter with the problem solved. If you think that you really don't have the mechanical skills to complete the assembly, you may pay your dealer to finish the job for you. We can recommend good dealers to you if you need. Please send us mails for more information. Email: service@teammagic.com.tw

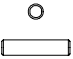
Rear





: Grease lubrication

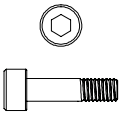
Front

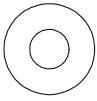



- 
116228
2x9.0mm Pin

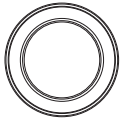
- 
126304BU
M3X4mm BH Screw


- 
126308
3x8mm Steel Flat
Head Screw

- 
126312C
3X12mm CAP Screw

- 
130129
5.2x12x0.2mm Shim

- 
130137
3.1x8x0.3mm Washer

- 
151015ST
10x15x4mm Steel
Bearing

- 
152005
4.7x1.42 O-RING



116216
3X6X1mm Washer



126305
3x5mm Steel FH
Screw



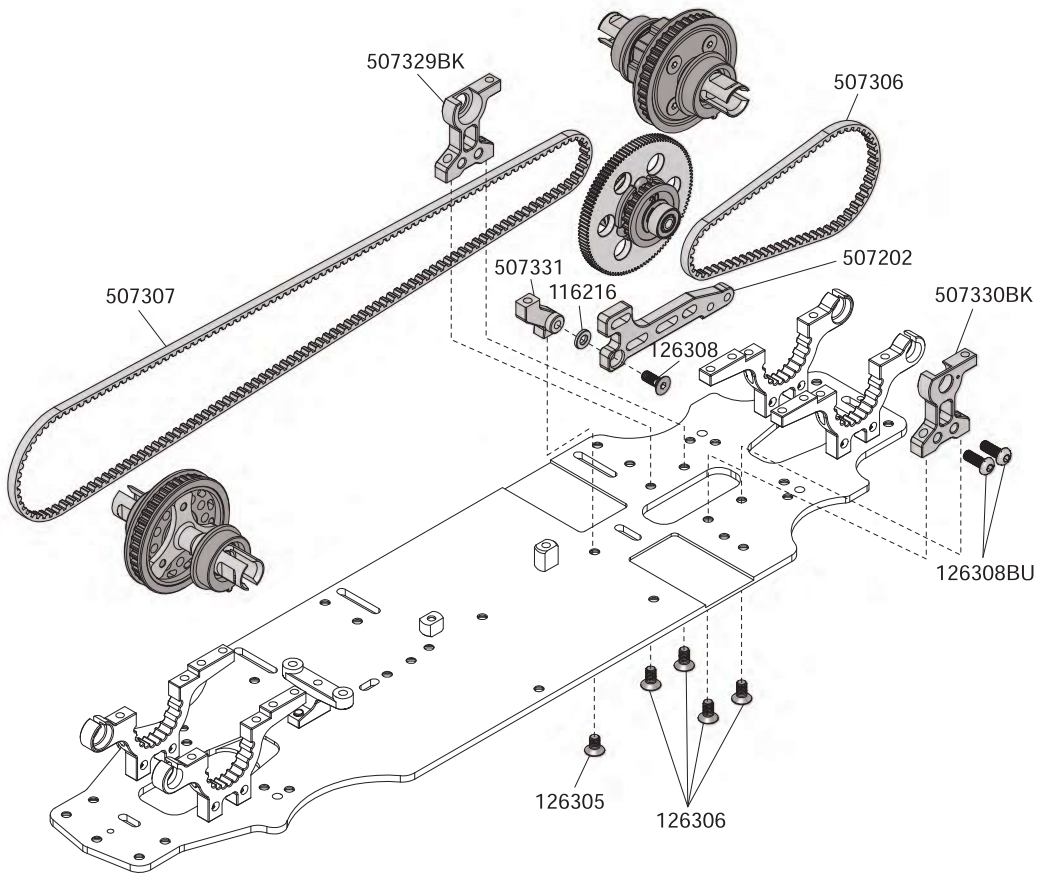
126306
3x6mm Steel F.H.
Screw



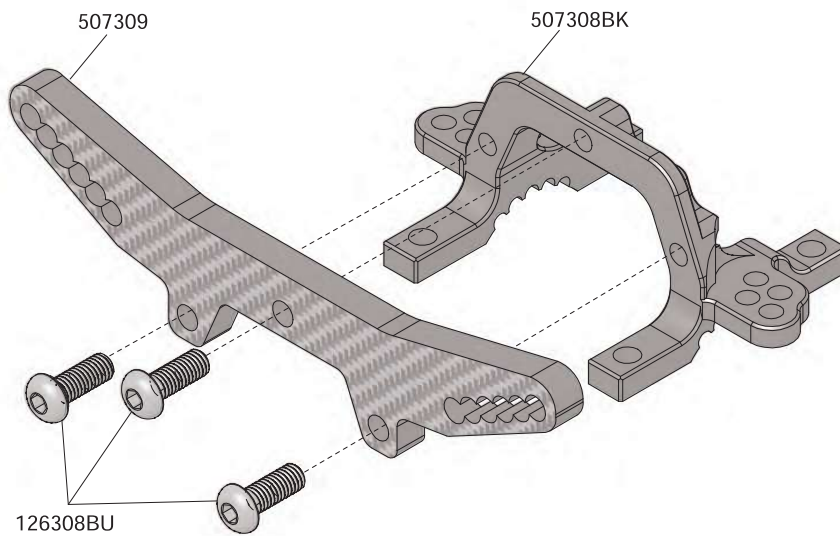
126308
3x8mm Steel F.H.
Screw



126308BU
3X8mm Button
Head Screw



Front





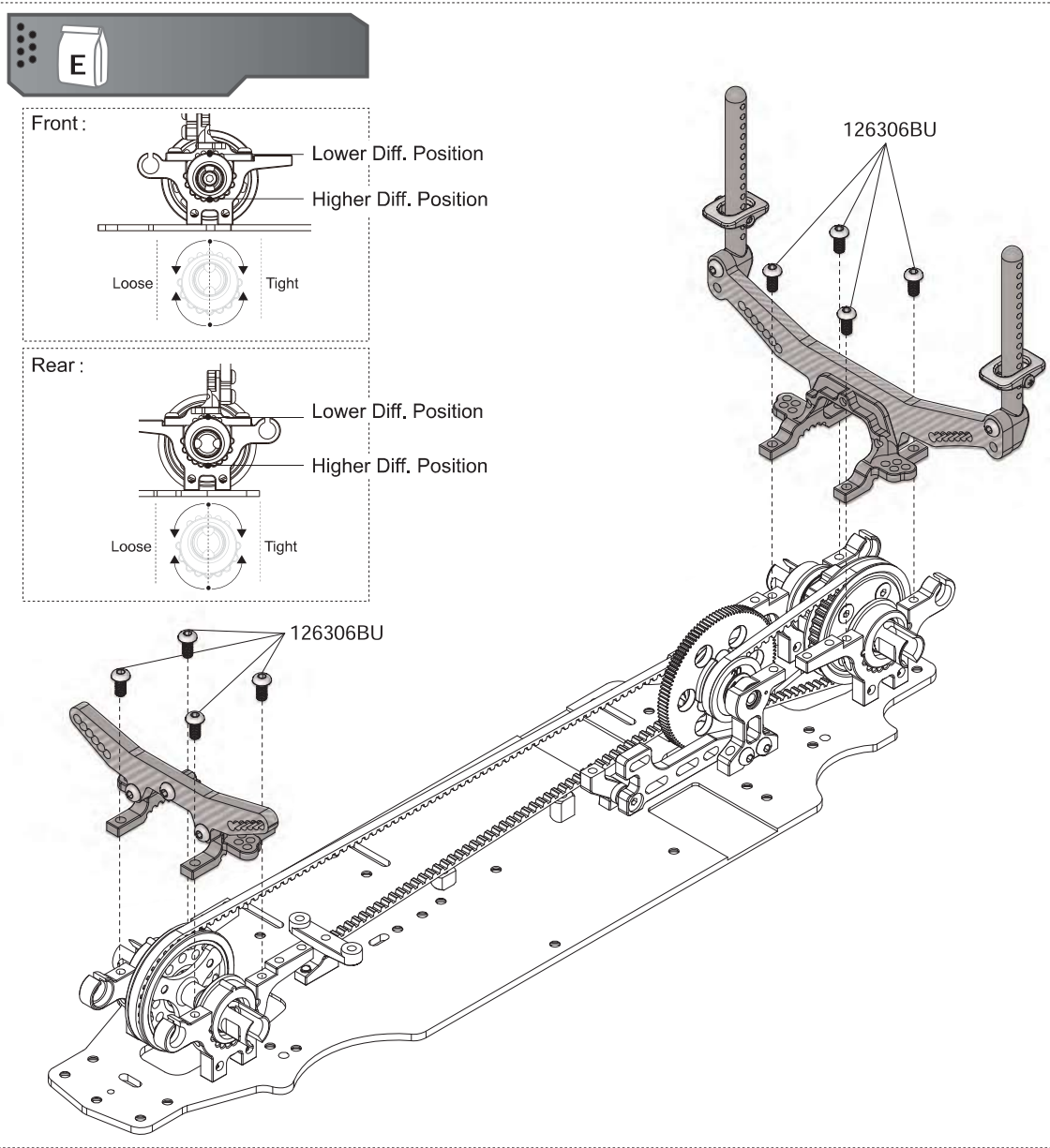
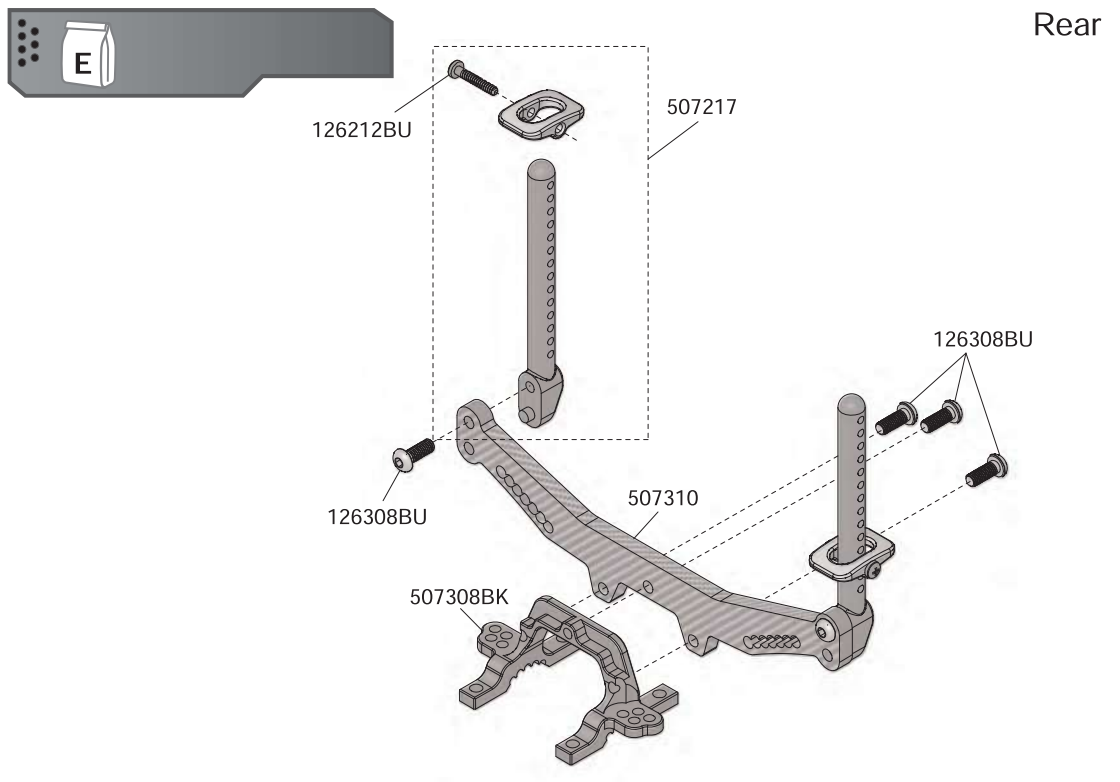
126212BU
2X12mm BH Screw



126306BU
3x6mm Button
Head Screw



126308BU
3x8mm Steel Button
Head Screw





126306BU
3x8mm Steel Button
Head Screw



126312BU
3x12mm Steel Button
Head Screw



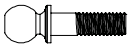
150306F
3x6x2.5mm Flanged
Bearing



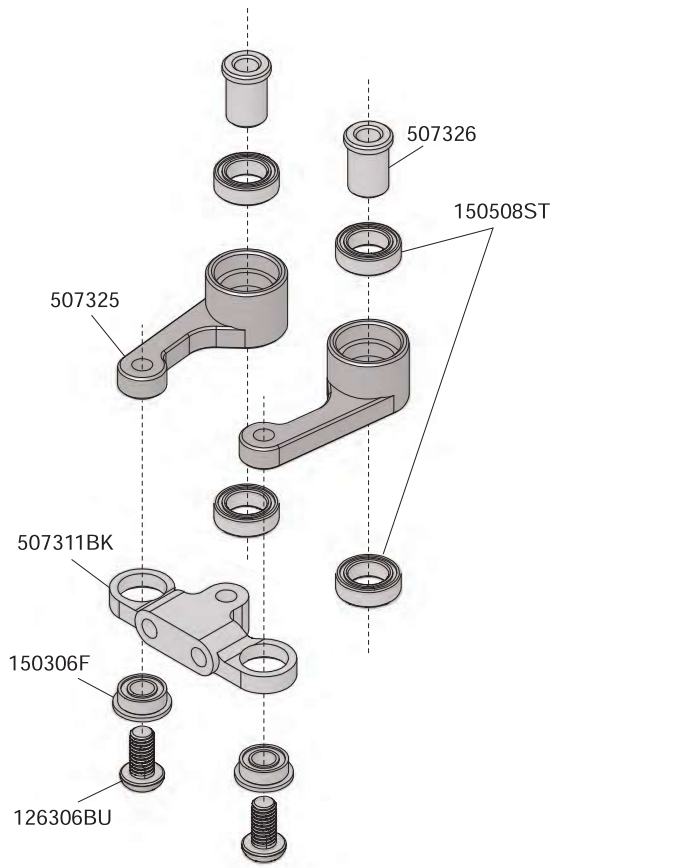
150508ST
5x8x2.5mm Steel
Bearing



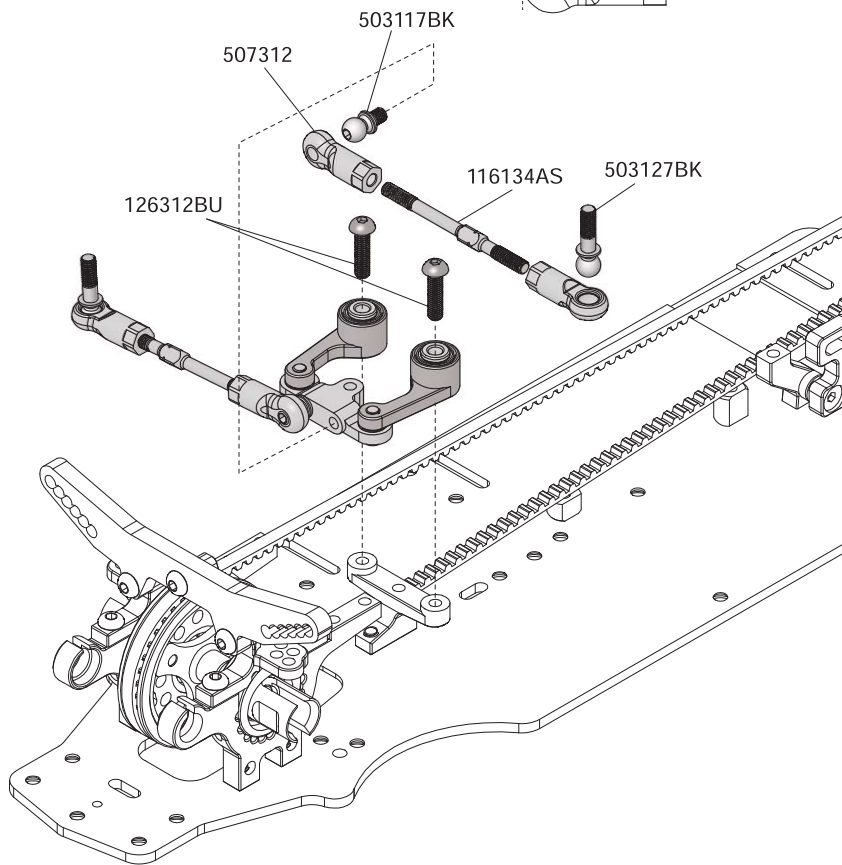
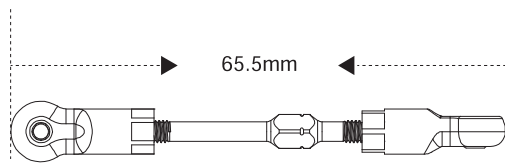
503117BK
5x4mm Ball Stud



503127BK
5x10mm Ball Stud



Front



Front



126204BU
2x4mm Steel Button
Head Screw



126307
3x7mm Steel FH
Screw



126308S
M3X8mm Set



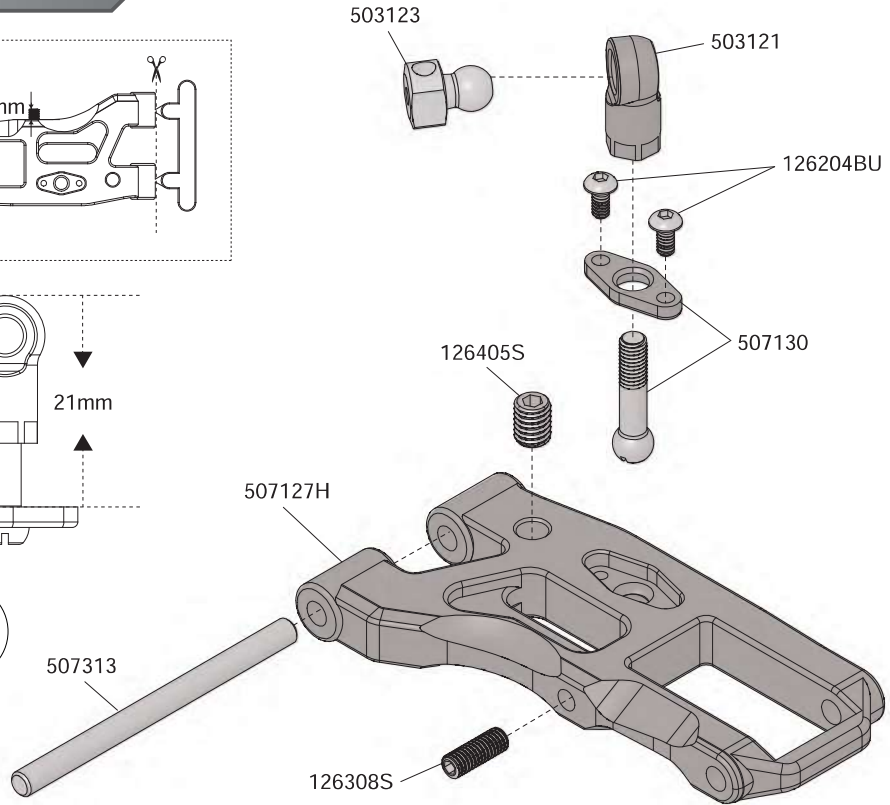
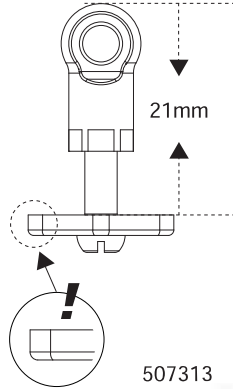
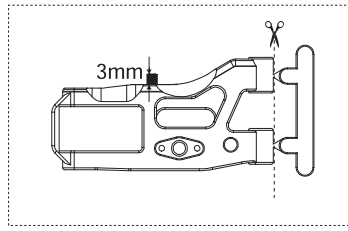
126405S
M4x5mm Set Screw



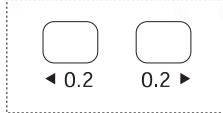
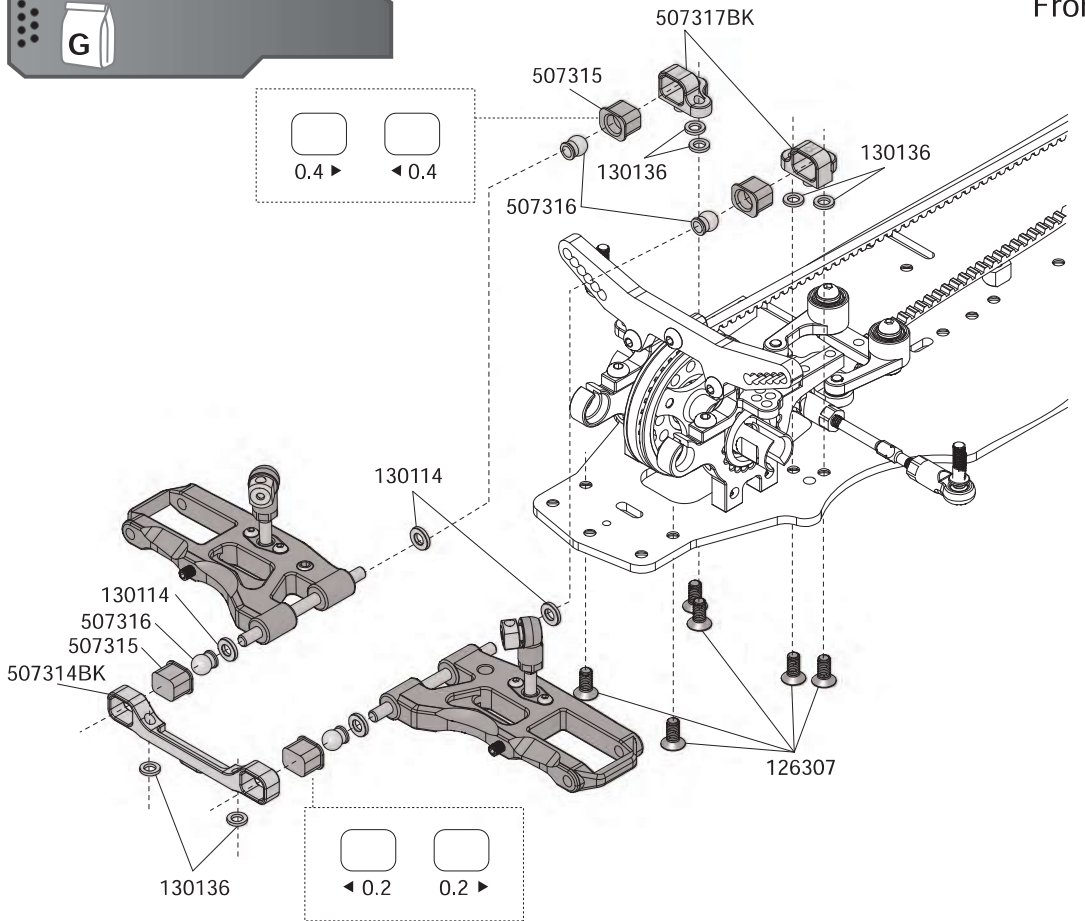
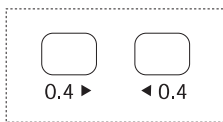
130114
3X6X1mm Washer



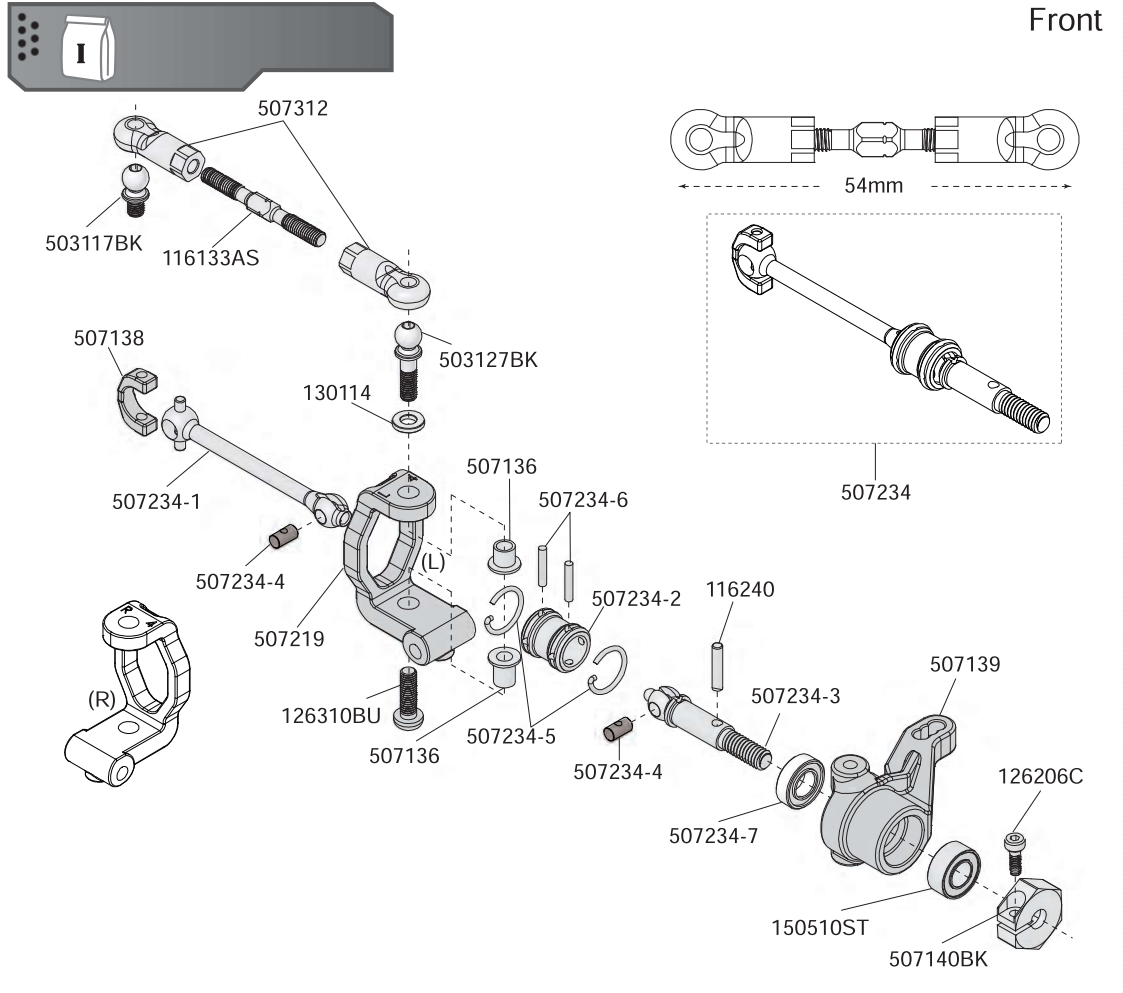
130136
3x5x0.75mm Alum.
Washer



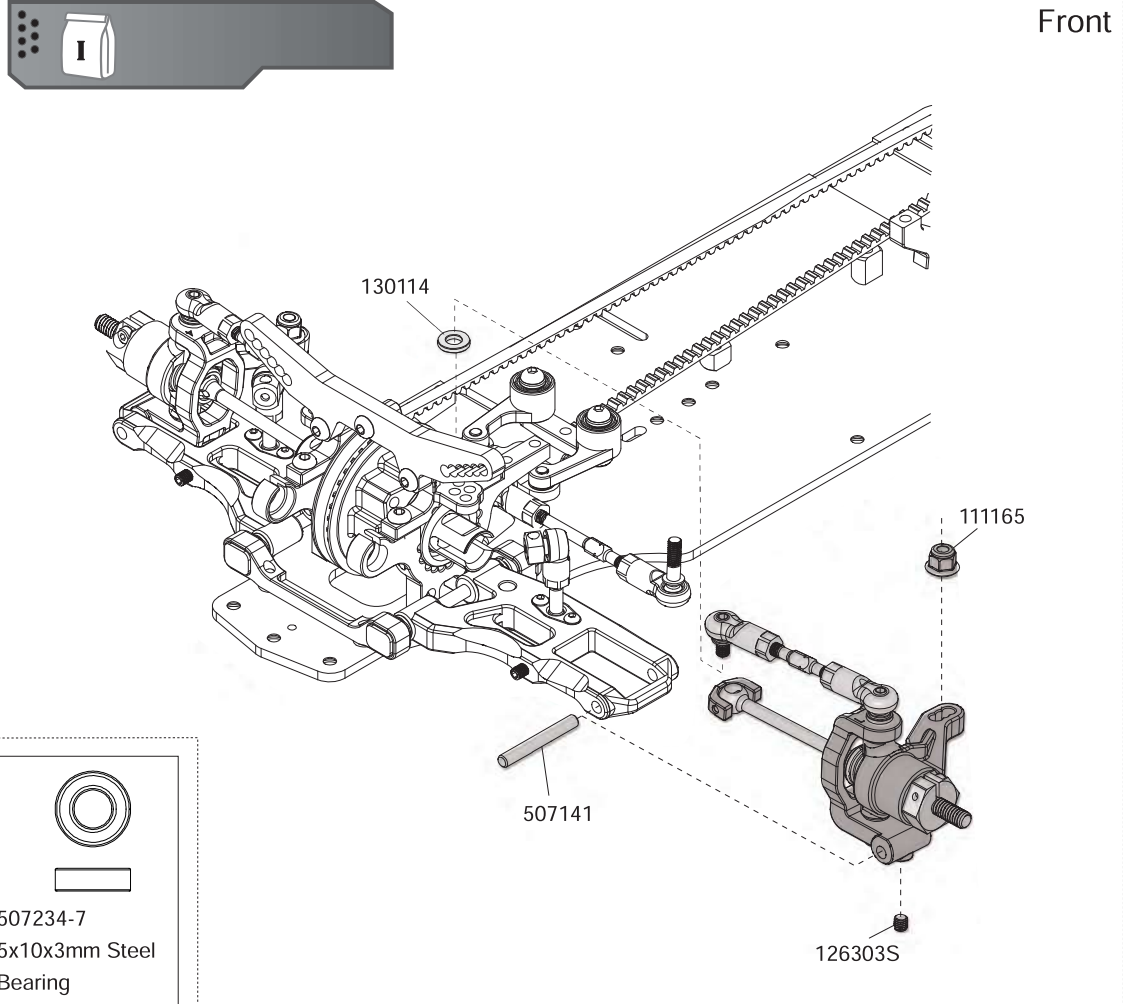
Front



Front



Front



111165
3mm Flanged Nut



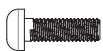
116240
2x9.8mm Pin



126206C
2x6mm Cap Screw



126303S
3x3mm Set Screw



126310BU
3x10mm Button Head
Screw



130114
3X6X1mm Washer



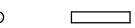
150510ST
5x10x4mm Steel
Bearing



503117BK
5x4mm Ball Stud



503127BK
Steering Block
5x10mm Ball Stud



507234-6
1.5x8.5mm Pin



507234-7
5x10x3mm Steel
Bearing

Rear



116219
3x6x2mm Alum.
Washer



116240
2x9.8mm Pin



126206C
2x6mm Cap Screw



126304S
3x4mm Set Screw



130114
3X6X1mm Washer



150510ST
5x10x4mm Steel
Bearing



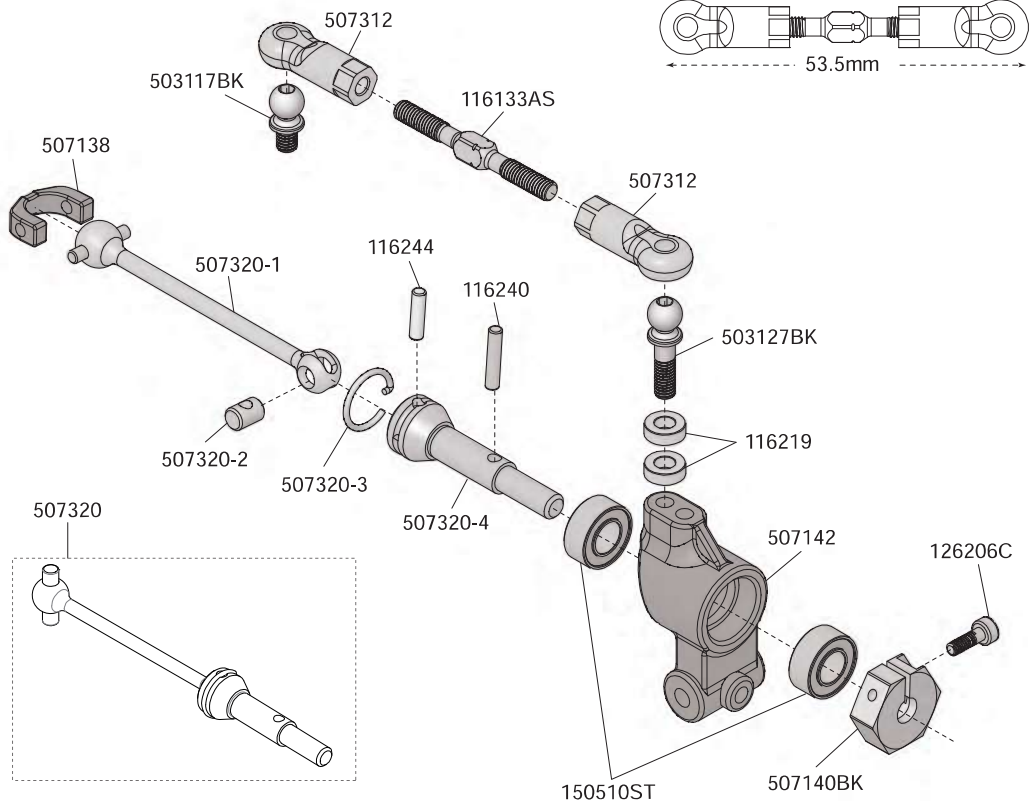
503117BK
5x4mm Ball Stud



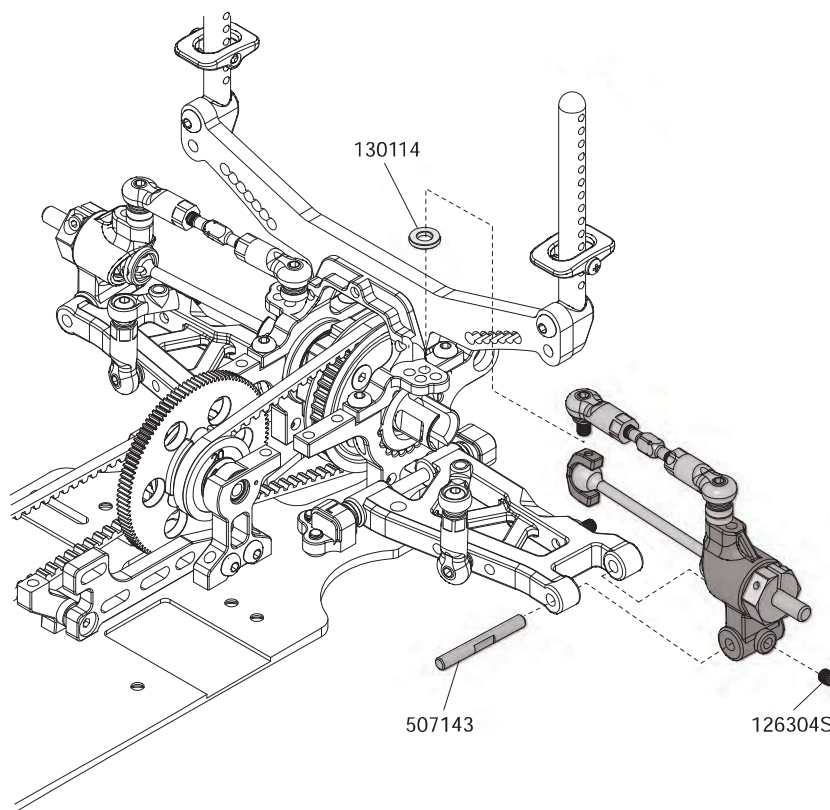
503127BK
Steering Block
5x10mm Ball Stud



116244
2x7.8mm Pin



Rear





126303S
3x3mm Set Screw



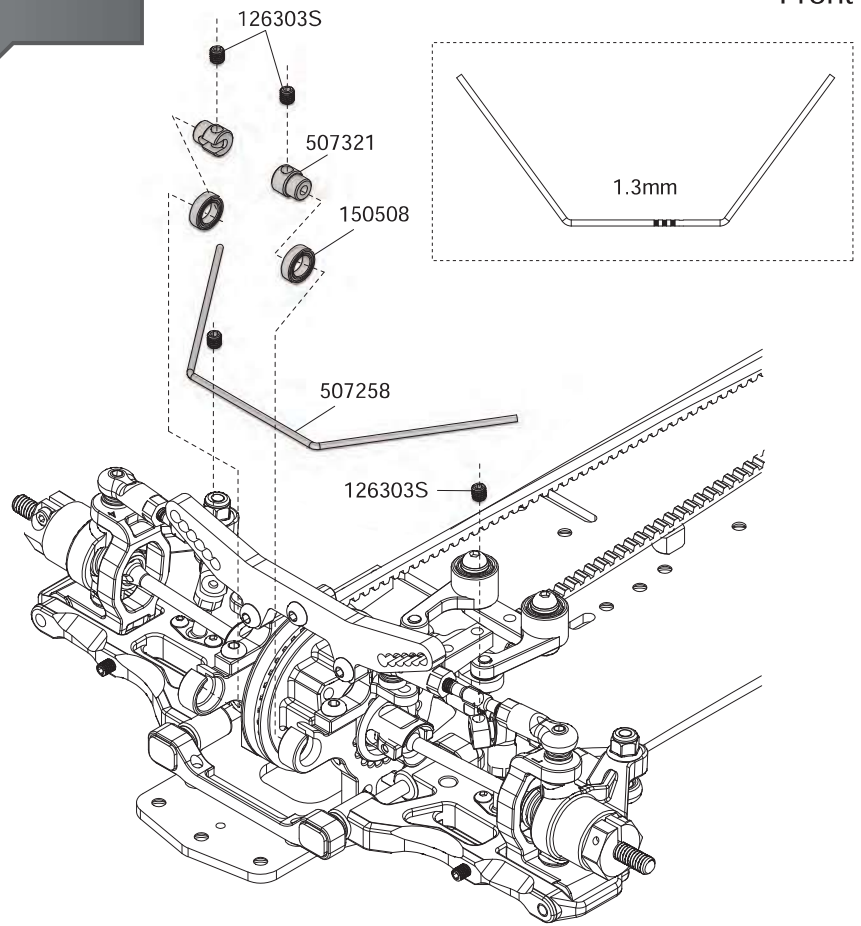
126304S
3x4mm Set Screw



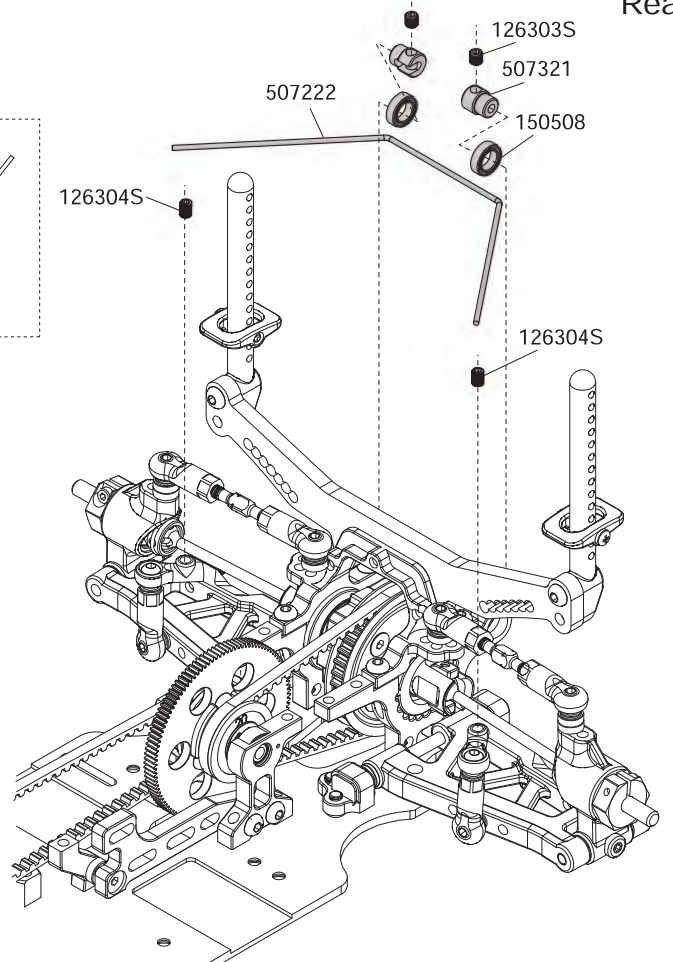
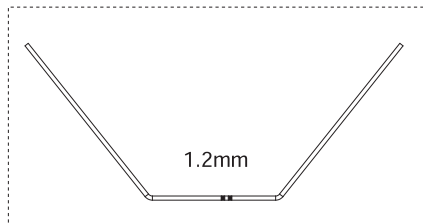
150508
5x8x2.5mm Bearing



Front

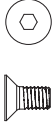


Rear

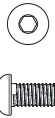




116219
3x6x2mm Alum.
Washer



126306
3x6mm Steel FH
Screw



126306BU
3x6mm Steel Button
Head Screw



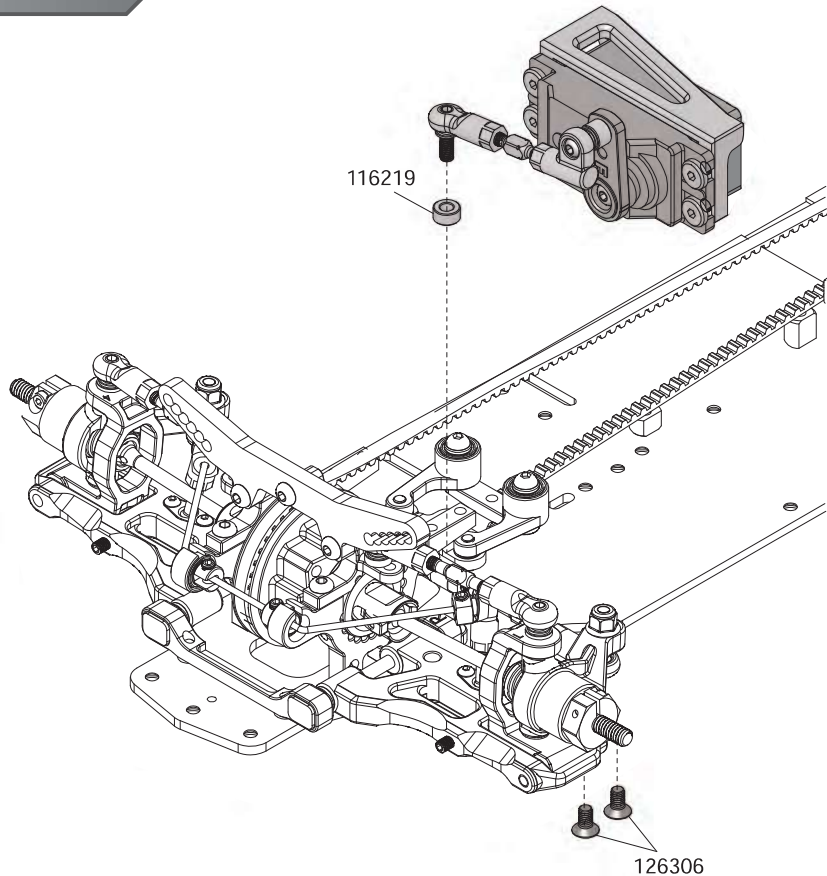
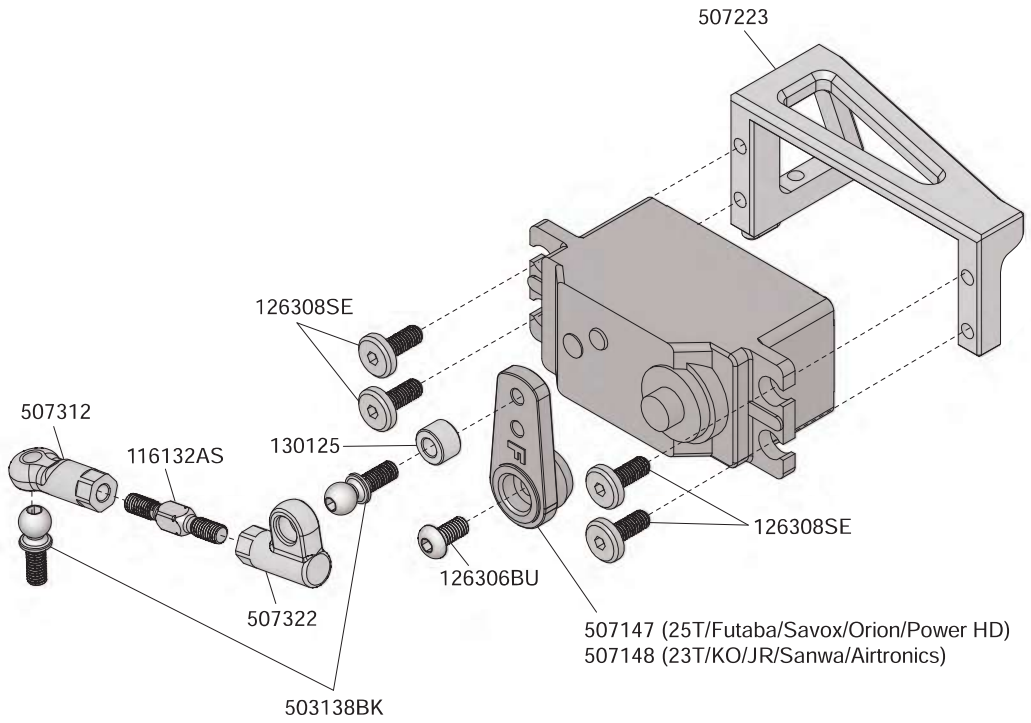
126308SE
3x8mm Steel Flat
Round Servo Mount
Screw



130125
3x6x4mm Alum.
Washer



503138BK
5x7mm Ball Stud





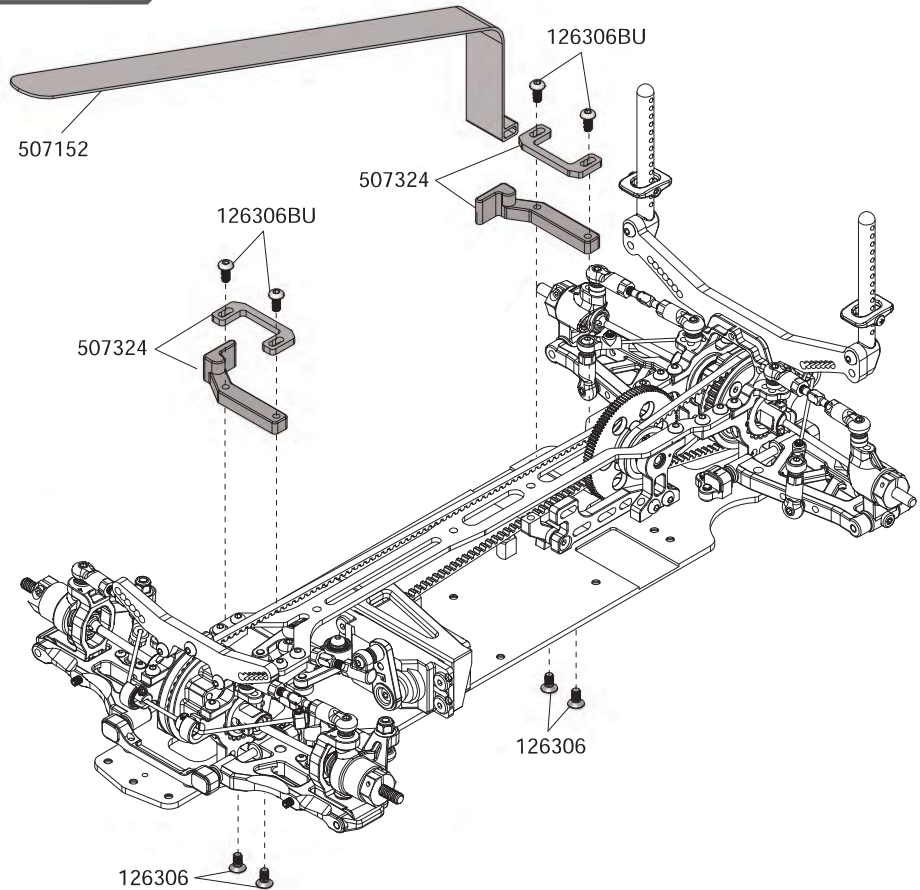
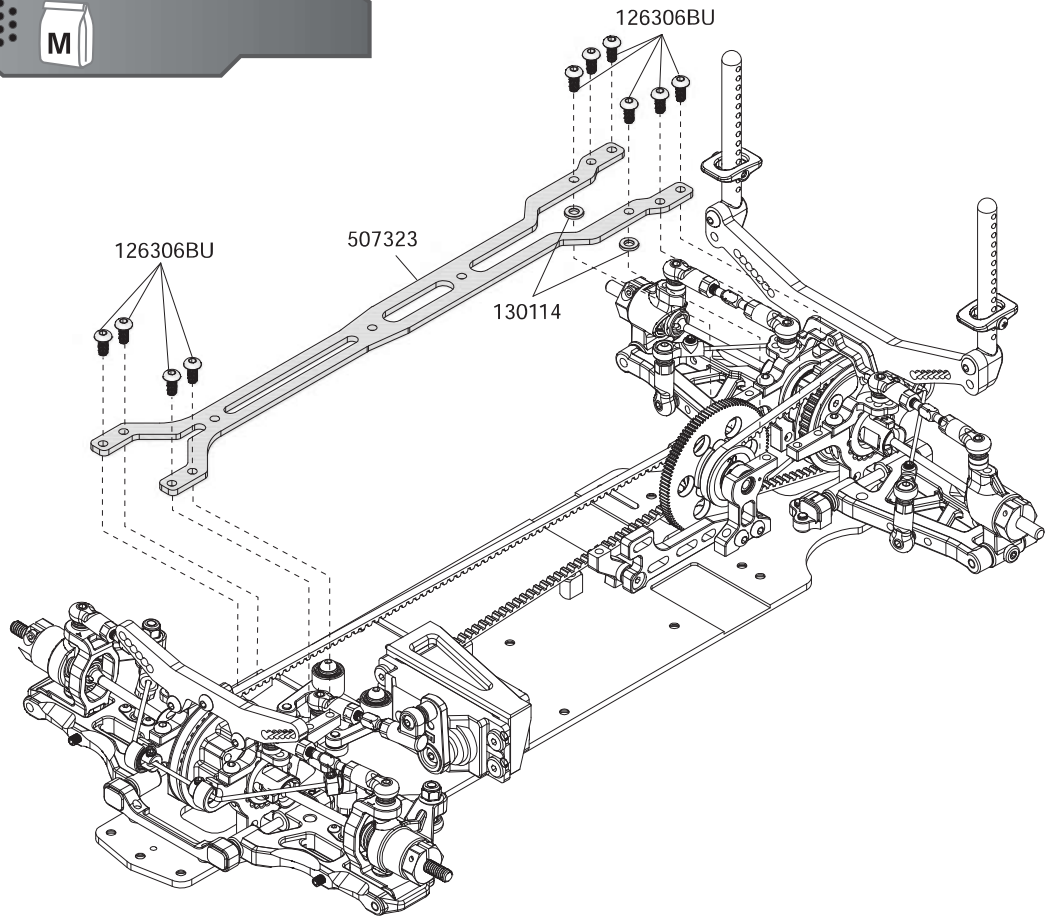
126306BU
3x6mm Steel Bolt
Head Screw



126306BU
3x6mm Steel Bolt
Head Screw



130114
3x6x2mm Washer
Washer





116219
3x6x2mm Alum.
Washer



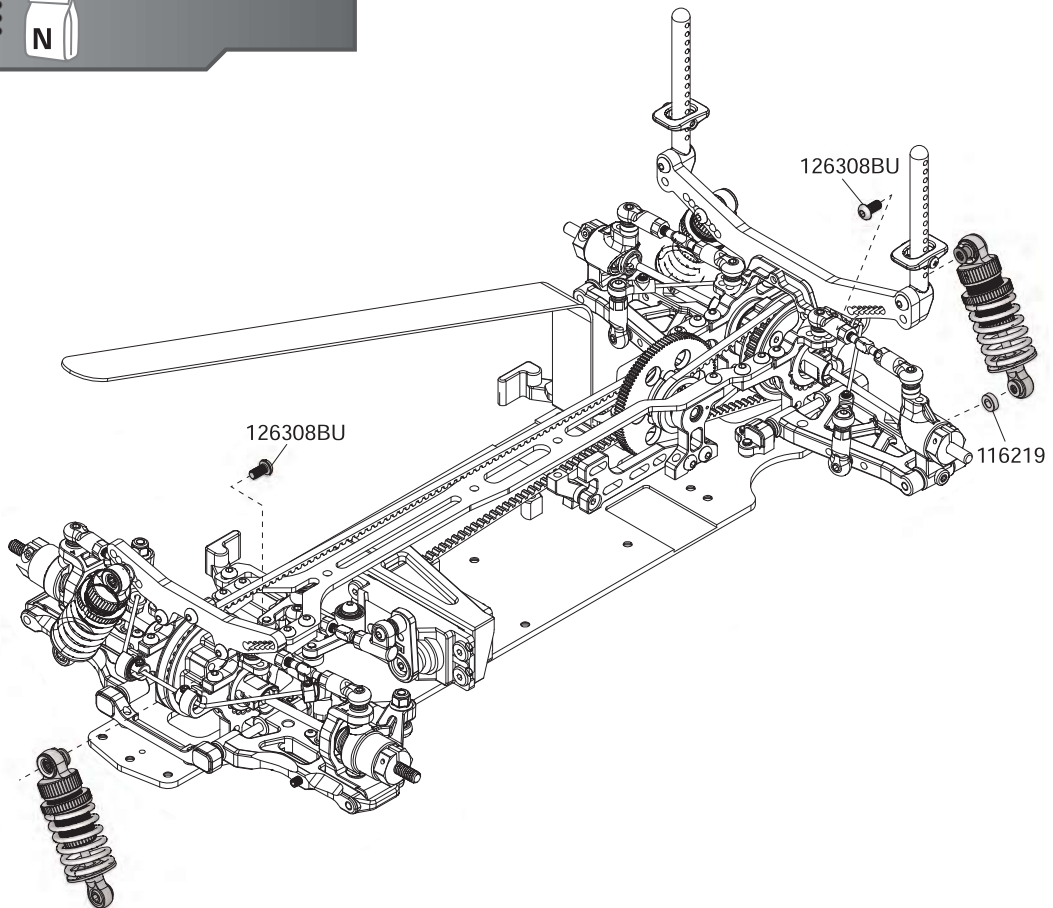
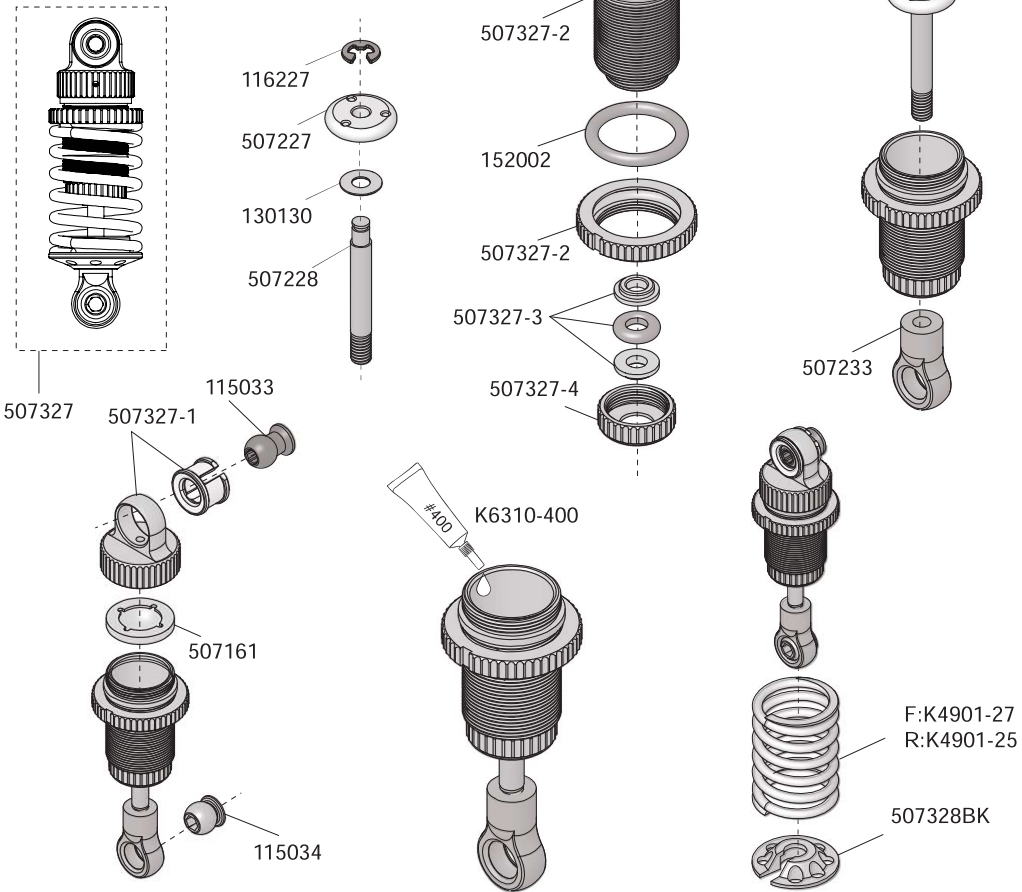
116227
E-clip 2.0



126308BU
3x8mm Steel Button
Head Screw



130130
2.6X6X0.3mm
Washer





111007ST
3mm Steel Locknut



126212BU
2X12mm BH Screw



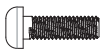
126306
3x6mm Steel FH
Screw



126308
3x8mm Steel F.H.
Screw



126310
3x10mm Steel FH
Screw



126310BU
3x10mm Button
Head
Screw



126212BU
507162

126310BU

507162

126212BU

507164

507163

507162

507164

111007ST

507164

126308



115016BK

507422

126310

126308

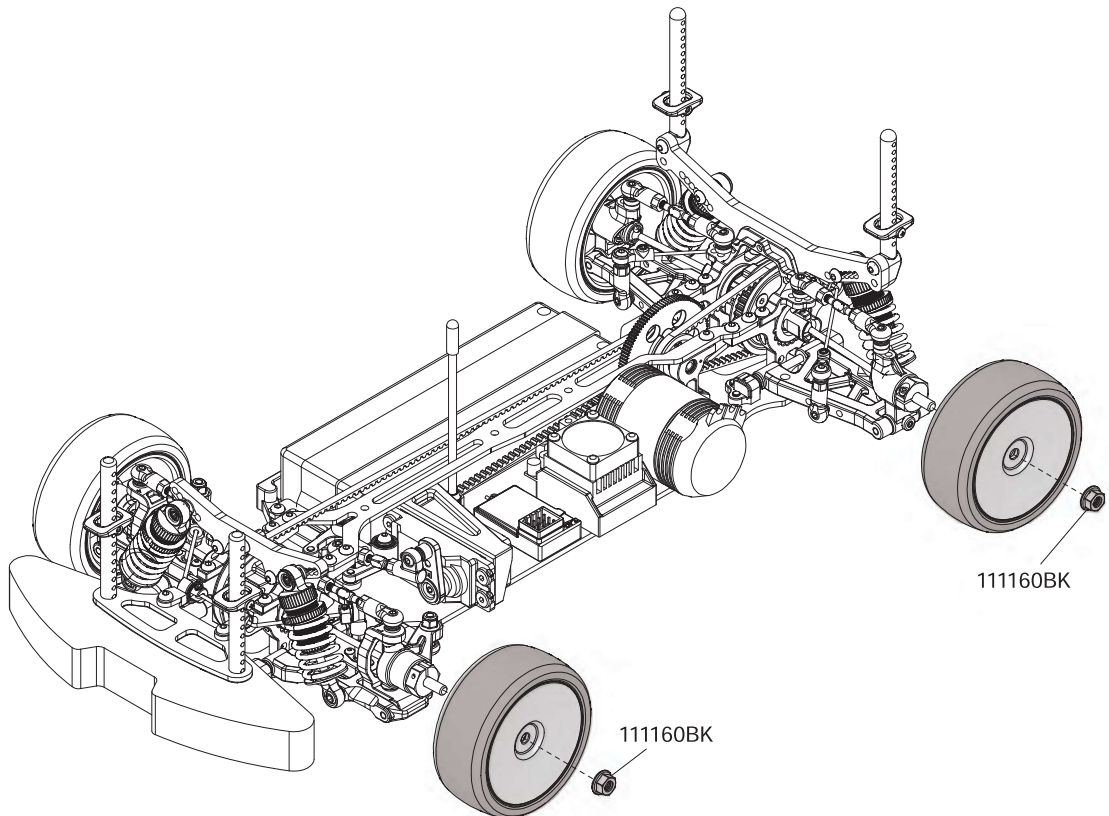
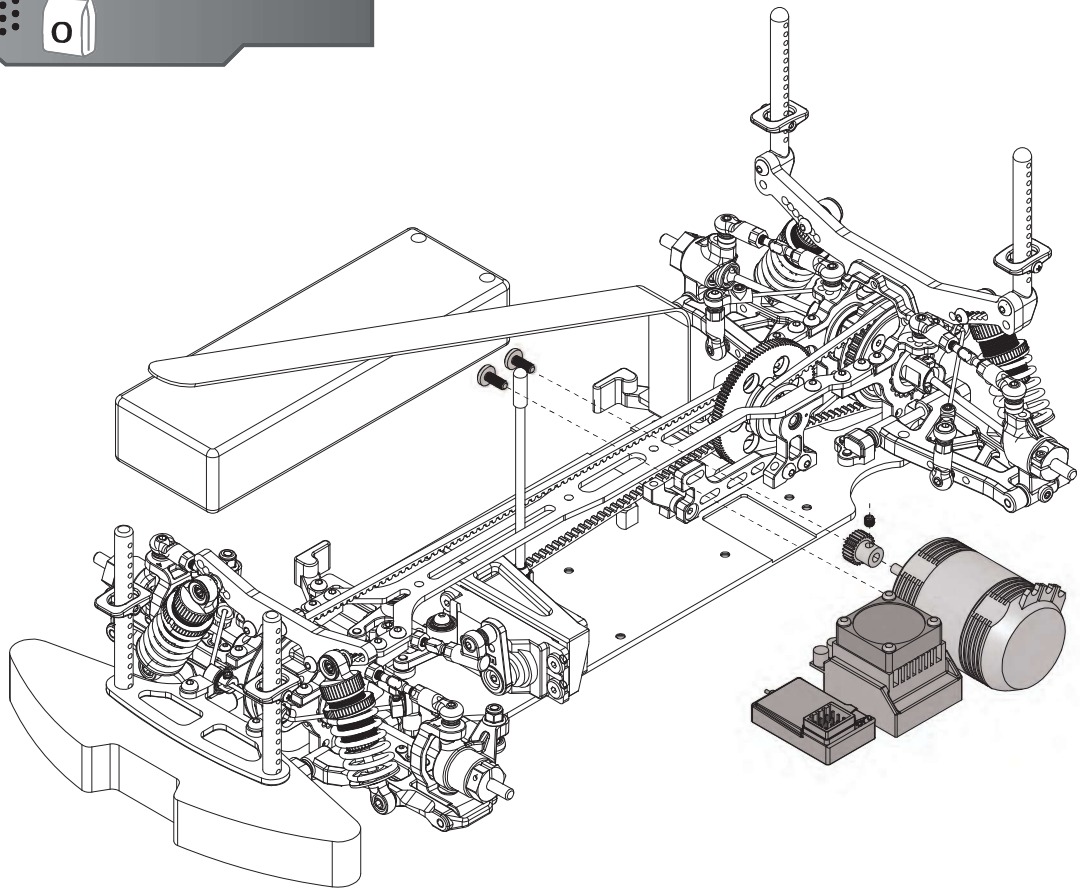
126306



111160BK
4mm Special Wheel
Lock Nut-Black



126308SE
3x8mm Steel Flat
Head Screw

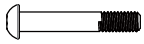




126314
3x14mm Steel Button
Head Screw

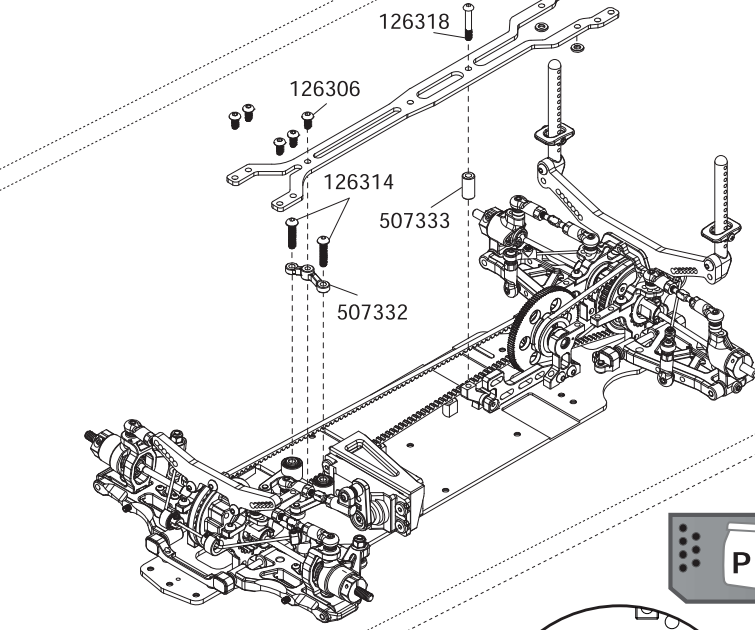
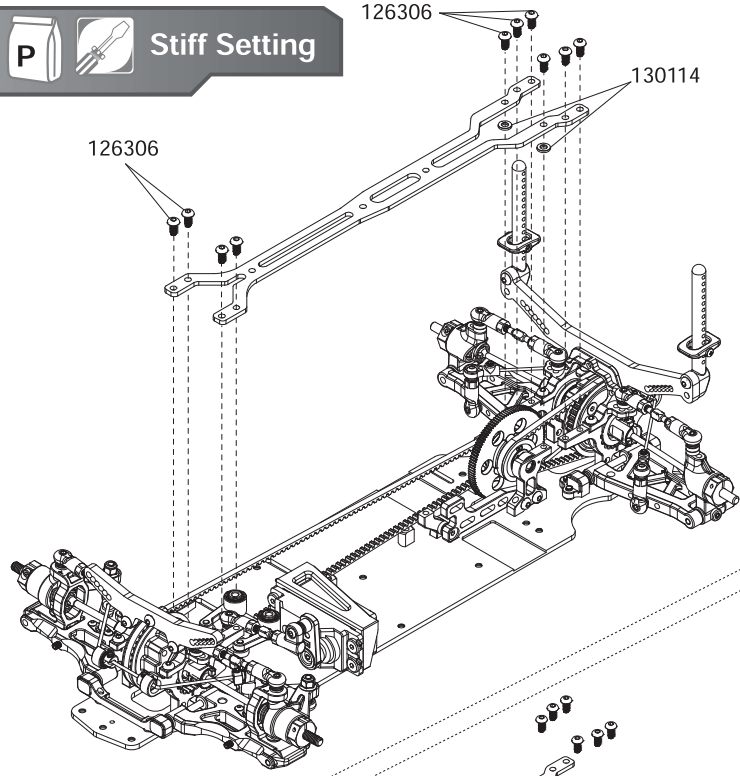


126306
3x6mm Steel FH
Screw

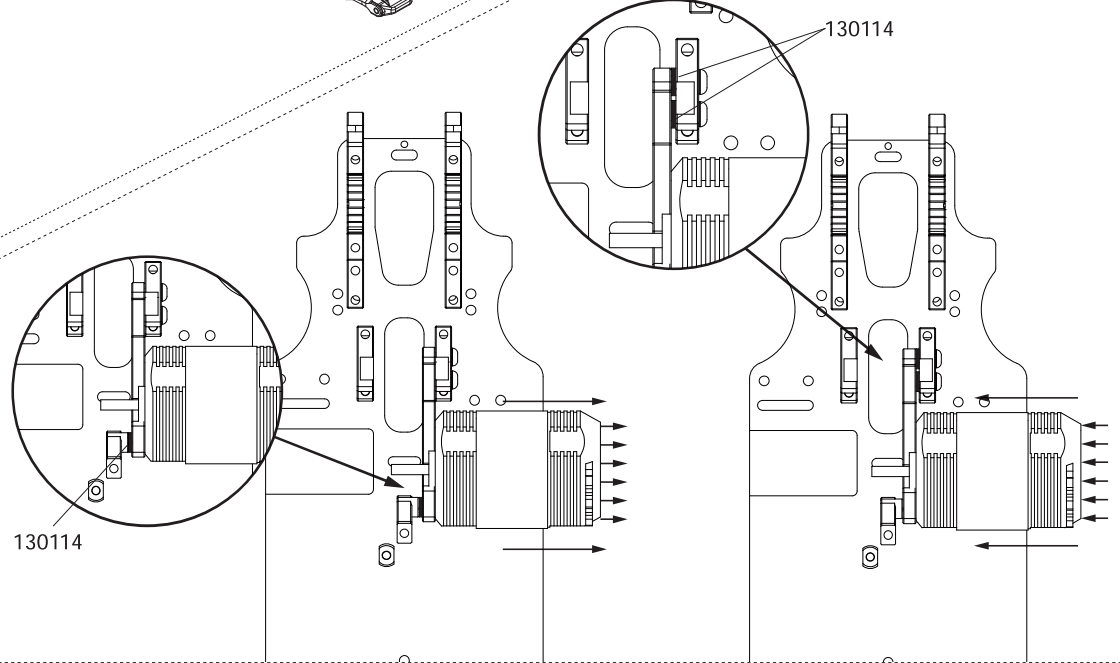


126318
3x18mm Steel Button
Head Screw

Stiff Setting



Motor Position Setting

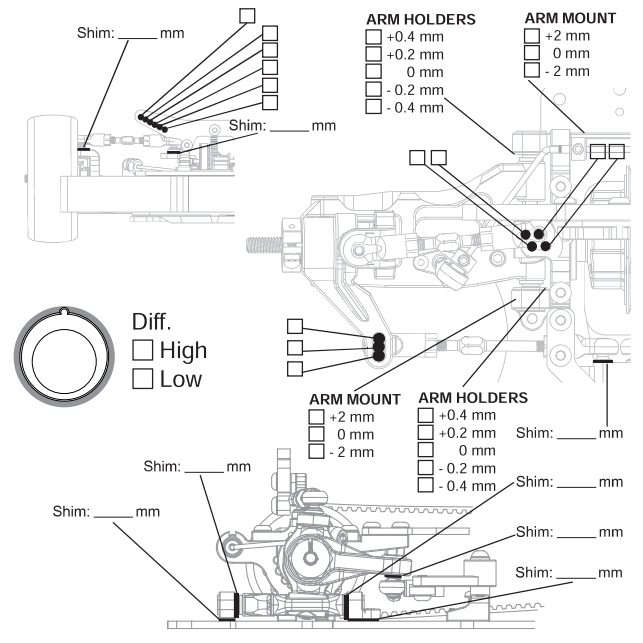


TRACK CONDITIONS

Type : Carpet Asphalt Open Med. Tight
 Place : Indoor Outdoor High Med. Low
 Surface: Smooth Med. Bumpy Track Temp/Air Temp: _____ / _____
 Note: _____

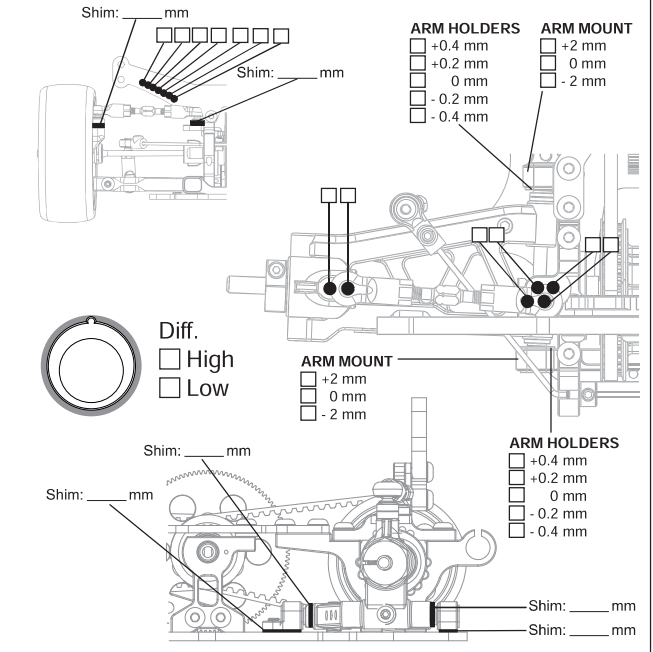
FRONT SUSPENSION

Track Width: _____ mm Gear Diff _____ wt
 Toe Angle: _____ Ball Diff
 Caster: _____ One Way
 Camber: _____ Spool
 Ride Height: _____ mm Anti-Roll Bar: \varnothing _____ mm
 Down Stop: _____ mm

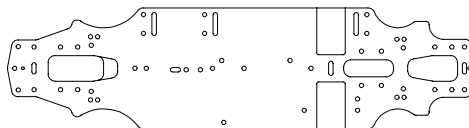


REAR SUSPENSION

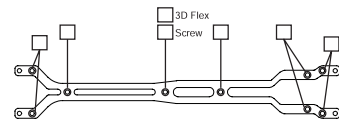
Track Width: _____ mm Gear Diff _____ wt
 Toe Angle: _____ Ball Diff
 Camber: _____ Spool
 Ride Height: _____ mm
 Down Stop: _____ mm Anti-Roll Bar: \varnothing _____ mm



Motor Position :
 Inside (0mm)
 Outside (1mm)
 _____ mm



2.3 mm 2.5 mm Aluminum



2 mm 2.3 mm 2.5 mm

ELECTRONICS

Servo: _____
 ESC: _____
 Battery: _____

DRIVE RATIO

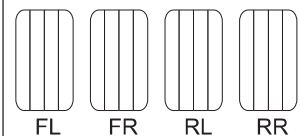
Spur $\frac{T}{T} \times 1.9 =$ _____
 Pinion

MOTOR

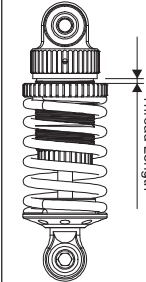
Brand: _____
 Turns: _____
 Timing: _____

TIRES

Insert : _____
 Wheel: _____
 Shore/deg: _____
 Compound: _____
 Tire Temp: _____
 Tire additive: _____
 Treated Area



SHOCKS

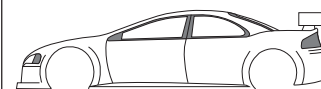


Hole Size: F _____ R _____
 Holes In Piston: F _____ R _____
 Oil wt: F _____ R _____
 Springs: F _____ R _____
 Rebound: F _____ R _____
 Bladder Note: _____
 Thread Length: F _____ R _____

ESC

Punch: _____
 Initial Brake : _____
 Drag Brake: _____
 ESC Timing Turbo Timing

BODY



Body: _____
 Wing Height: _____
 Wing Position: _____

TRACK CONDITIONS

Type:	<input type="checkbox"/> Carpet	<input type="checkbox"/> Asphalt	Size:	<input type="checkbox"/> Open	<input type="checkbox"/> Med.	<input type="checkbox"/> Tight
Place:	<input type="checkbox"/> Indoor	<input type="checkbox"/> Outdoor	Traction:	<input type="checkbox"/> High	<input type="checkbox"/> Med.	<input type="checkbox"/> Low
Surface:	<input type="checkbox"/> Smooth	<input type="checkbox"/> Med.	<input type="checkbox"/> Bumpy	Track Temp/Air Temp: _____ / _____		

Note: _____

FRONT SUSPENSION

Track Width: **186** mm Gear Diff _____ wt

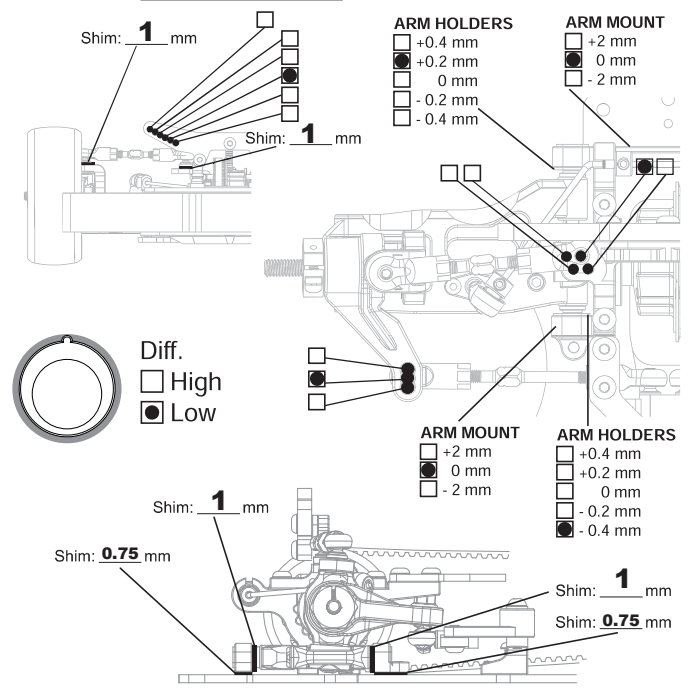
Toe Angle: **+1** ° Ball Diff

Caster: **4** ° One Way

Camber: **-2** ° Spool

Ride Height: **5** mm Anti-Roll Bar: Ø **1.3** mm

Down Stop: **6** mm



REAR SUSPENSION

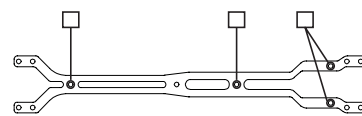
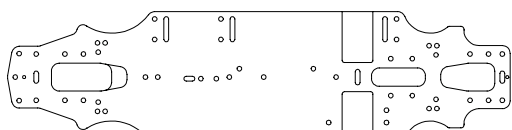
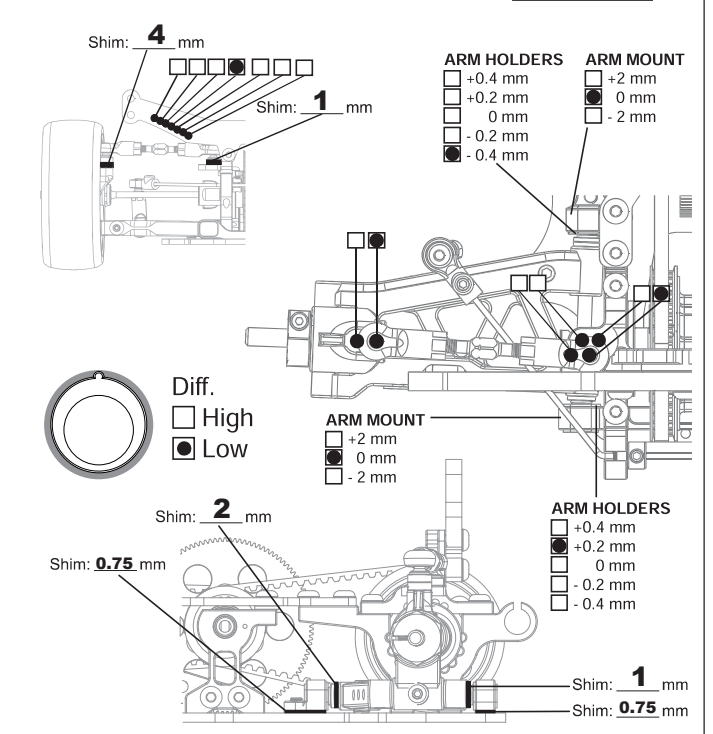
Track Width: **189** mm Gear Diff **1000** wt

Toe Angle: **-3** ° Ball Diff

Camber: **-1.5** ° Spool

Ride Height: **5.5** mm

Down Stop: **5** mm Anti-Roll Bar: Ø **1.2** mm



ELECTRONICS

Servo: _____

ESC: _____

Battery: _____

DRIVE RATIO

Spur **110** T
Pinion _____ T X1.9= _____

MOTOR

Brand: _____

Turns: _____

Timing: _____

TIRES

Insert: _____

Wheel: _____

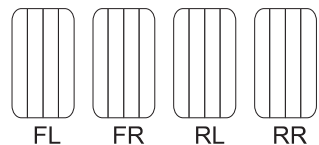
Shore/deg: _____

Compound: _____

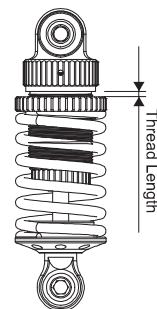
Tire Temp: _____

Tire additive: _____

Treated Area



SHOCKS



Hole Size: F **1.1** R **1.1**

Holes In Piston: F **3** R **3**

Oil wt: F **400** R **400**

Springs: F **K-factory 27** R **K-factory 25**

Rebound: F _____ R _____

Bladder Note: _____

Thread Length: F _____ R _____

ESC

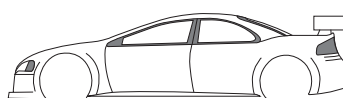
Punch: _____

Initial Brake: _____

Drag Brake: _____

ESC Timing Turbo Timing

BODY



Body: _____

Wing Height: _____

Wing Position: _____



Parts List

PARTS	
Item No.	Item Description
111007ST	3mm Steel Locknut (10)
111160BK	4mm Special Wheel Lock Nut-Black (4)
111165	3mm Flanged Nut(10)
115016BK	Antenna Rod (2) BLACK
115033	5.8mm Hex Socket Steel Ball-Long Neck (6)
115034	5.8mm Hex Socket Steel Ball-Short Neck (6)
116132AS	3x20mm Alum. 7075 Adjustable Rod (2)
116133AS	3x30mm Alum. 7075 Adjustable Rod (2)
116134AS	3x40mm Alum. 7075 Adjustable Rod (2)
116203	E-clip 5 (10)
116216	3x6x1mm Alum. Washer (6)
116219	3x6x2mm Alum. Washer (6)
116226	3.1x4.8x0.5mm Shim (10)
116227	E-clip 2.0 (10)
116228	2X9.0mm Pin(10)
116238	2x12.8mm Pin (10)
116240	2x9.8mm Pin (10)
116244	2x7.8mm Pin (10)
126204BU	2x4mm Steel Button Head Screw (6)
126206C	2x6mm Cap Screw (6)
126212BU	2X12mm BH Screw(10)
126303S	3x3mm Set Screw (6)
126304BU	M3X4mm BH Screw(10)
126304S	3x4mm Set Screw (6)
126305	3x5mm Steel FH Screw (6)
126305BU	M3X5mm BH Screw (10)
126306	3x6mm Steel FH Screw (6)
126306BU	3x6mm Steel Button Head Screw (6)
126307	3x7mm Steel FH Screw (6)
126308	3x8mm Steel F.H. Screw (6)
126308BU	3x8mm Steel Button Head Screw (6)
126308S	M3X8mm Set(10)
126308SE	3x8mm Steel Flat Round Servo Mount Screw (6)
126310	3x10mm Steel F.H. Screw (6)
126310BU	3x10mm Button Head Screw (6)
126310S	3x10mm Set Screw (6)
126312BU	3x12mm Button Head Screw (6)
126312C	3x12mm Cap Screw (6)
126405S	M4x5mm Set Screw(6)
130114	3X6X1mm Washer(10)
130125	3x6x4mm Alum. Washer (6)
130129	5.2x12x0.2 Washer (10)
130130	2.6X6X0.3mm Washer(10)
130136	3x5x0.75mm Alum. Washer (6)
130137	3.1x8x0.3mm Washer (10)
150306F	3x6x2.5mm Flanged Bearing (2)
150508	5x8x2.5mm Bearing (2)
150508ST	5x8x2.5mm Steel Bearing(4)
150510ST	5x10x4mm Steel Bearing (4)
151015ST	10x15x4mm Steel Bearing (4)
152002	"O-RING 11.2 x 1.7 (10)
152005	"O-Ring 4.7X1.4mm(10)
503117BK	E4 5x4mm Ball Stud (6)-Black
503121	E4 Short Ball Cup (6)
503123	E4 Alum. Anti-Roll Bar Ball (4)
503138BK	E4 5x7mm Ball Stud (6)-Black
507109	Alum. Spur Gear Holder
507110	20T Pulley (2)
507114	Diff. Case Gasket (4)
507115	Diff. Case O-ring (4)
507116	Belt Tension Adjuster (4)
507127H	Front Suspension Arm-Hard Material (2)
507130	Front Anti-roll Bar Rod (2)
507136	Bushing For Caster Block (2+2)
507138	Universal Driveshaft Plastic Pin Cover (8)
507139	Steering Block (2)
507140BK	Alum. Wheel Adapter-BK (4)
507141	Caster Block Pin (2)
507142	Rear Hub Carrier (2)
507143	Rear Hub Carrier Pin (2)
507147	Servo Arm (Futaba) (2)
507148	Servo Arm (Ko,Sanwa) (2)
507152	Quick Release Battery Strap

Item No.	Item Description
507161	Shock Membrane (4)
507162	Front Body Support (2)
507163	Foam Bumper
507164	Bumper Mount Set
507202	Alum. Motor Bulkhead
507206	Light Weight Bevel Gear Set (4)
507207	Light Weight Diff. Case
507208	Light Weight Alum. Diff. Joint (2)
507209	Light Weight Gear Diff. Set
507210	Front Spool 38T Pulley
507211	Front Spool Pulley Holder
507212	Front Spool ST Steel Joints (2)
507213	Front Spool Set
507217	Rear Body Support (2)
507218	Anti-Roll Bar Ball Cup (4)
507219	Caster Block (4 degree) (2)
507222	Rear Anti-Roll Bar 1.2mm (1)
507223	Alum. One Piece Servo Mount
507227	Shock Piston 3 Holes (1.1mm)(4)
507228	Low CG Shock Shaft (2)
507233	Low CG Shock Ball End & Nylon Set (4)
507234	Universal Driveshaft Nunchaku Type (2)
507234-1	Drive Shaft Only for Nunchaku (2)
507234-2	Joint for Nunchaku (2)
507234-3	Wheel Axel for Nunchaku (2)
507234-4	Joint Hinge Pin for Nunchaku (4)
507234-5	G-Clip for Nunchaku (4)
507234-6	1.5x8.5mm Pin for Nunchaku (4)
507234-7	5x10x3mm Bearing for Nunchaku (2)
507258	Front Anti Roll Bar 1.3mm
507301	Chassis 2.3mm
507302BK	FR/RL Lower Bulkhead
507303BK	FL/RR Lower Bulkhead
507304	Center Battery Guides (2)
507305BK	Steering Lower Floating Mount
507306	Rear Belt
507307	Front Belt
507308BK	Upper Bulkhead
507309	4mm Front Shock Tower
507310	4mm Rear Shock Tower
507311BK	"Alum. Middle Steering Plate
507312	"5mm Ball Cup (6)
507313	Front Suspension Axle (2)
507314BK	FF/RR Suspension Mount
507315	Suspension Mount Inserts (0,0.2,0.4)
507316	Suspension Mount Pivot Ball (4)
507317BK	FR/RF Suspension Mount
507318	Rear Suspension Axle (2)
507319H	Rear Lightweight Arms (2)
507320	Rear DriveShafts (2)
507320-1	Steel Drive Shaft Only (2)
507320-2	Pivot for 507320 (4)
507320-3	G-Clip for Universal Driveshaft (4)
507320-4	Steel Universal Joint Outdriver (2)
507321	Anti-Roll Bar Retainers (2)
507322	"L" Type Servo Ball Cup (2)
507323	2.0mm Upper Deck
507324	Battery Mount System
507325	Plastic Steering Levers
507326	Steering Lever Post (2)
507327	Shock Absorber Set (2)
507327-1	Shock Upper Cap (2)
507327-2	Shock Body Set (2)
507327-3	Shock Small O ring Set (4)
507327-4	Shock Lower Cap (2)
507328BK	Lower Spring Cups with lowered spring height (4)
507329BK	Right Middle Axle Mount
507330BK	Left Middle Axle Mount
507331	Motor Plate Support
507422	Antenna Rod Mount
K4901-25	LX Touring Shock Spring 13x23.5mm #25
K4901-27	LX Touring Shock Spring 13x23.5mm #27
K6310-400	K Factory Shock Oil 70ml/2.5oz #400
K6330-1000	K Factory Diff Oil 40ml #1000
K6330-500000	K Factory Diff Oil 30ml #500000
K6601-110	Special Precision 64P Spur Gear 110T