

## SETUP SHEET

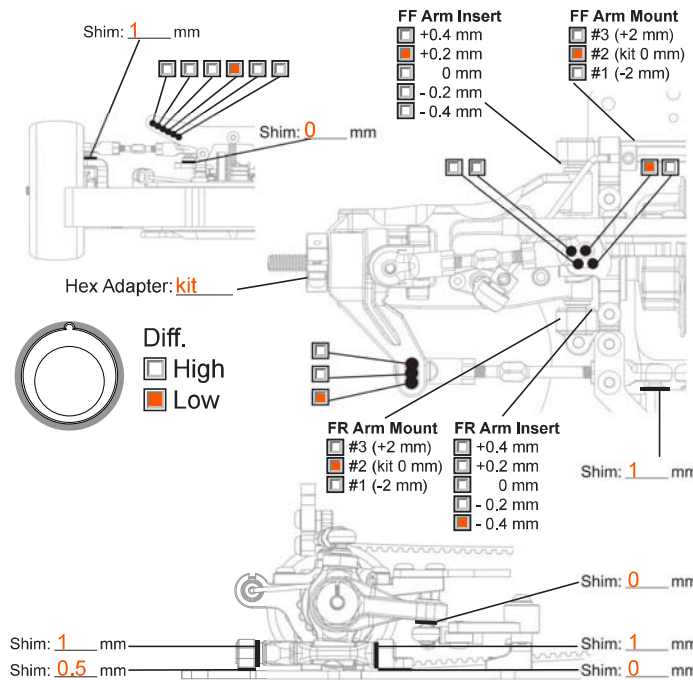


### TRACK CONDITIONS

Type:  Carpet  Asphalt Size:  Open  Med.  Tight  
 Place:  Indoor  Outdoor Traction:  High  Med.  Low  
 Surface:  Smooth  Med.  Bumpy Track Temp/Air Temp: **45** / **33**  
 Note: **Best Lap : 20,00**

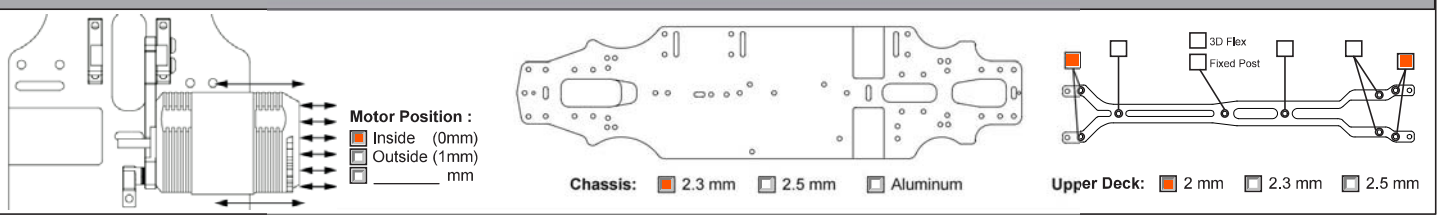
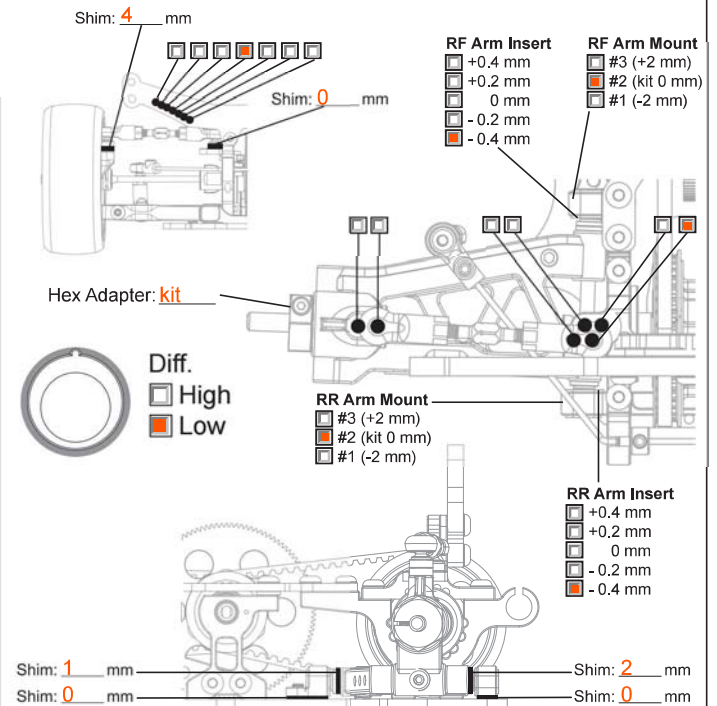
### FRONT SUSPENSION

Track Width: **187** mm  Gear Diff \_\_\_\_\_ wt  
 Toe Angle: **1** °  One Way  
 Caster: **4** °  Spool  
 Camber: **-2** °  
 Ride Height: **5.2** mm Anti-Roll Bar:  $\varnothing$  **1.3** mm  
 Down Stop: **5** mm



### REAR SUSPENSION

Track Width: **185.5** mm  Gear Diff **3000** wt  
 Toe Angle: **-2.2** °  
 Camber: **-2.3** °  
 Ride Height: **5.6** mm  
 Down Stop: **4.5** mm Anti-Roll Bar:  $\varnothing$  **1.2** mm



### ELECTRONICS

Servo: **Ko BSX-2 Response**  
 ESC: **Orion R10Pro**  
 Battery: **Orion 7200**

### MOTOR

Brand: **Fantom Racing Ion V4**  
 Turns: **10.5**  
 Timing: **55**

### ESC

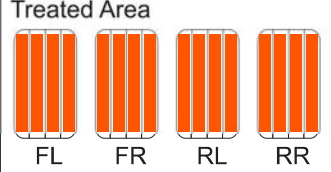
Punch: **9**  
 Initial Brake: **0**  
 Drag Brake: **0**  
 ESC Timing  Turbo Timing

### DRIVE RATIO

Spur **102** T  
 Pinion **43** T  $\times 1.9 =$  **4.51**

### TIRES

Insert: **Panaracer**  
 Wheel: **Panaracer**  
 Shore/deg: **36**  
 Compound: \_\_\_\_\_  
 Tire Temp: **45**  
 Tire additive: **MR33**



### SHOCKS

Hole Size: **F1.1** **R1.1**  
 Holes In Piston: **F3** **R3**  
 Shock Oil WT: **F350** **R350**  
 Shock Springs: **Fhpi silver** **Rhpi silver**  
 Shock Rebound: **F20%** **R20%**  
 Bladder Note: \_\_\_\_\_  
 Thread Length: **F2** **R2.5**  
 Shock Length: **F59** **R59**

### BODY

Body Position: \_\_\_\_\_  
 Body: **Protofom LTCR**  
 Wing Height: **-7mm/110mm**  
 Wing Position: **-10mm**