

SETUP SHEET

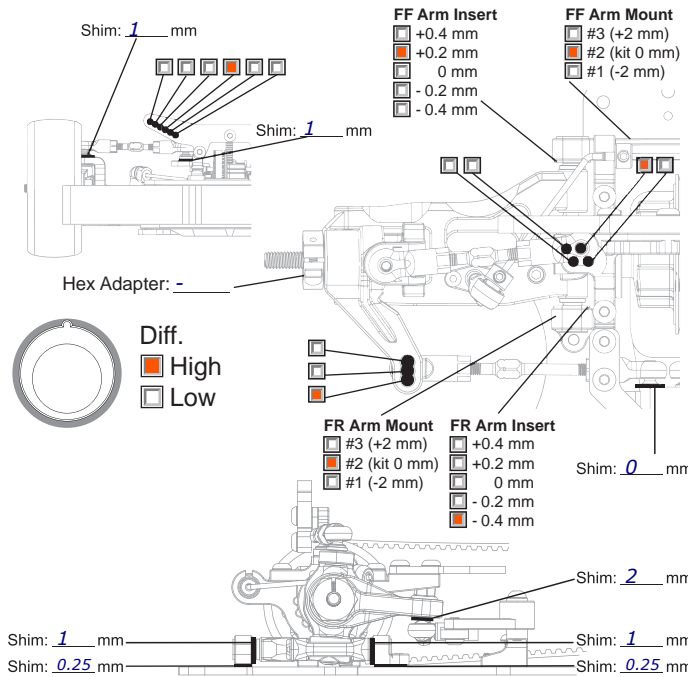


TRACK CONDITIONS

Type: Carpet Asphalt Size: Open Med. Tight
 Place: Indoor Outdoor Traction: High Med. Low
 Surface: Smooth Med. Bumpy Track Temp/Air Temp: 7 / 7
 Note: Wet all day, last 2 finals dry

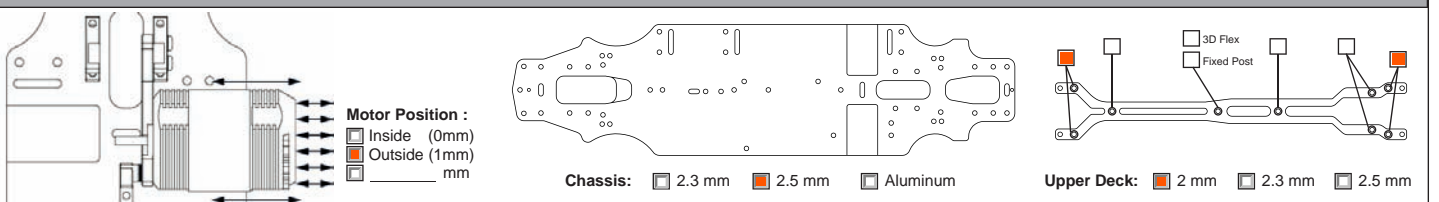
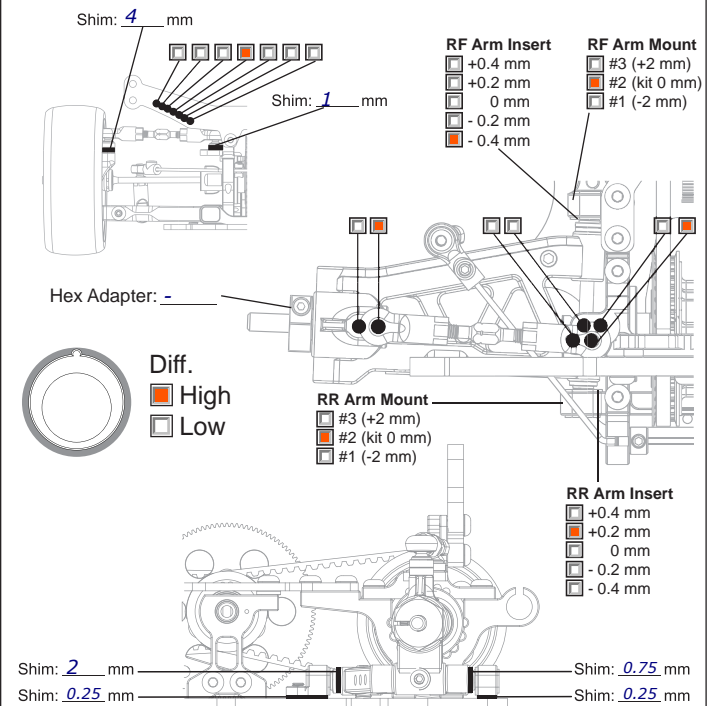
FRONT SUSPENSION

Track Width: _____ mm Gear Diff _____ wt
 Toe Angle: +0.5 ° One Way
 Caster: 4 ° Spool
 Camber: 1.5 °
 Ride Height: 5.0 mm Anti-Roll Bar: \varnothing 1.3 mm
 Down Stop: 6.0 mm



REAR SUSPENSION

Track Width: _____ mm Gear Diff 1000 wt
 Toe Angle: 3.0 °
 Camber: 1.2 °
 Ride Height: 5.2 mm
 Down Stop: 5.0 mm Anti-Roll Bar: \varnothing 1.2 mm



ELECTRONICS

Servo: HRC
 ESC: Much More
 Battery: Much More

MOTOR

Brand: Much More
 Turns: 13.5
 Timing: Fixed

ESC

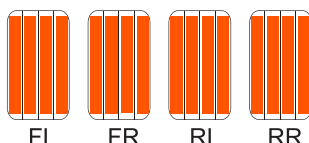
Punch: Blinky
 Initial Brake: _____
 Drag Brake: 0
 ESC Timing Turbo Timing

DRIVE RATIO

Spur 74 T
 Pinion 35 T $\times 1.9 =$ 4.02

TIRES

Insert: Sorex32
 Wheel: _____
 Shore/deg: _____
 Compound: _____
 Tire Temp: _____
 Tire additive: HRC Red
 Treated Area



SHOCKS

Hole Size: F std R std
 Holes In Piston: F 3 R 3
 Shock Oil WT: F 400 R 400
 Shock Springs: F Red/Blue R Red/Green
 Shock Rebound: F R
 Bladder Note: _____
 Thread Length: F R
 Shock Length: F R

BODY

Body Position: _____ Body: LTC2
 Wing Height: _____
 Wing Position: _____