



SETUP SHEET



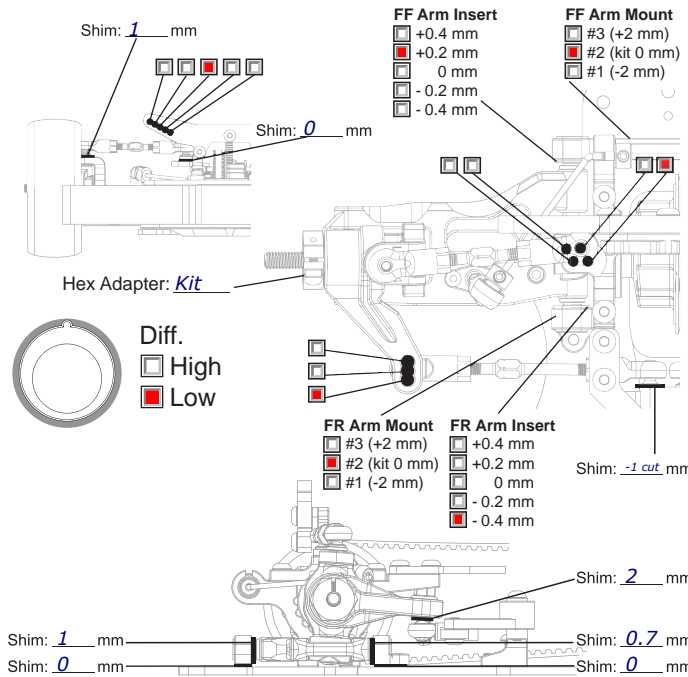
TRACK CONDITIONS

Type: Carpet Asphalt Size: Open Med. Tight
 Place: Indoor Outdoor Traction: High Med. Low
 Surface: Smooth Med. Bumpy Track Temp/Air Temp: _____ / _____

Note: Use E4RS III 2.3mm chassis (TM507301) and short front axles (TM507313)

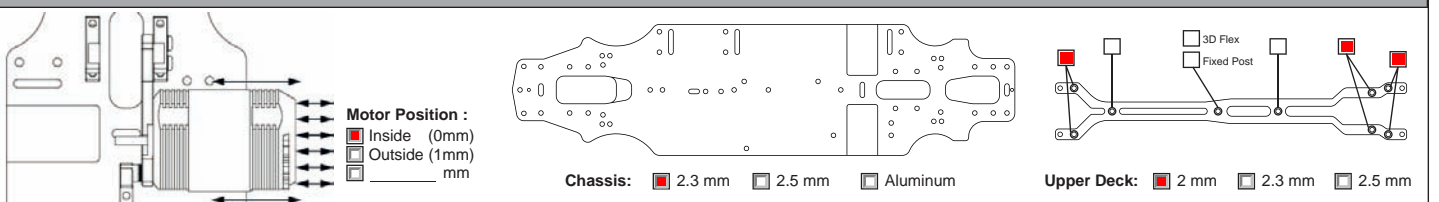
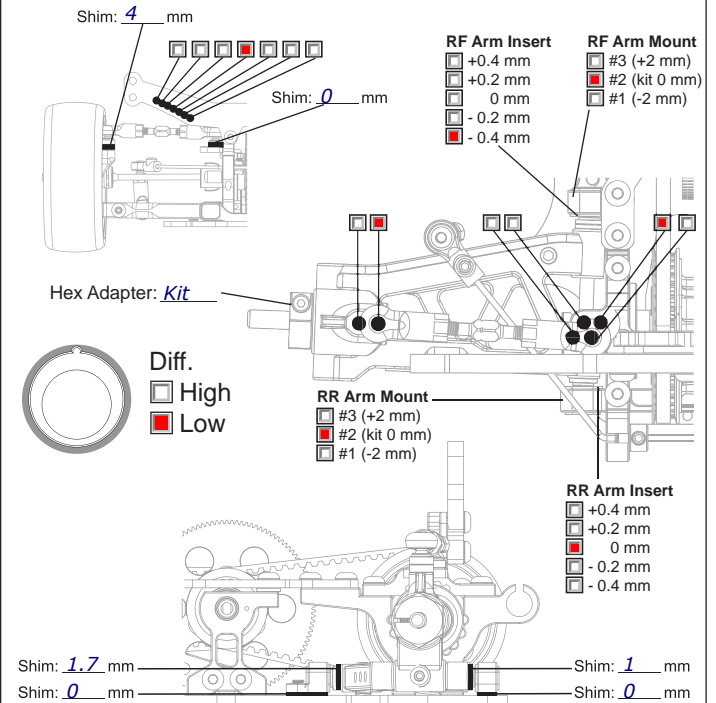
FRONT SUSPENSION

Track Width: _____ mm Gear Diff _____ wt
 Toe Angle: 1.5 ° One Way
 Caster: 4 ° Spool
 Camber: 1.5 °
 Ride Height: 5.2 mm Anti-Roll Bar: Ø 1.3 mm
 Down Stop: 5.8 mm



REAR SUSPENSION

Track Width: _____ mm Gear Diff 3'000 LRP wt
 Toe Angle: 2.7 °
 Camber: 2 °
 Ride Height: 5.4 mm
 Down Stop: 4.8 mm Anti-Roll Bar: Ø 1.3 mm



ELECTRONICS

Servo: _____
 ESC: _____
 Battery: _____

MOTOR

Brand: _____
 Turns: 4.5T
 Timing: _____

ESC

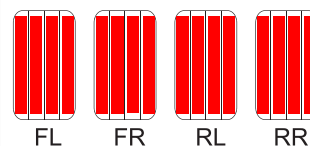
Punch: _____
 Initial Brake: _____
 Drag Brake: _____
 ESC Timing Turbo Timing

DRIVE RATIO

Spur 110 T
 Pinion 27 T x1.9 = 7.74

TIRES

Insert: Volante Outdoor ETS
 Wheel: _____
 Shore/deg: _____
 Compound: _____
 Tire Temp: _____
 Tire additive: Hudy ETS
 Treated Area



SHOCKS

Hole Size: F 1.1 R 1.1
 Holes In Piston: F 3 R 3
 Shock Oil WT: F 45 LRP R 45 LRP
 Shock Springs: F TM P2.9 R TM P3.1
 Shock Rebound: F 20% R 20%
 Bladder Note: _____
 Thread Length: F _____ R _____
 Shock Length: F _____ R _____

BODY

Body Position: 3mm Body: Protoform LTC-R
 Wing Height: _____
 Wing Position: _____