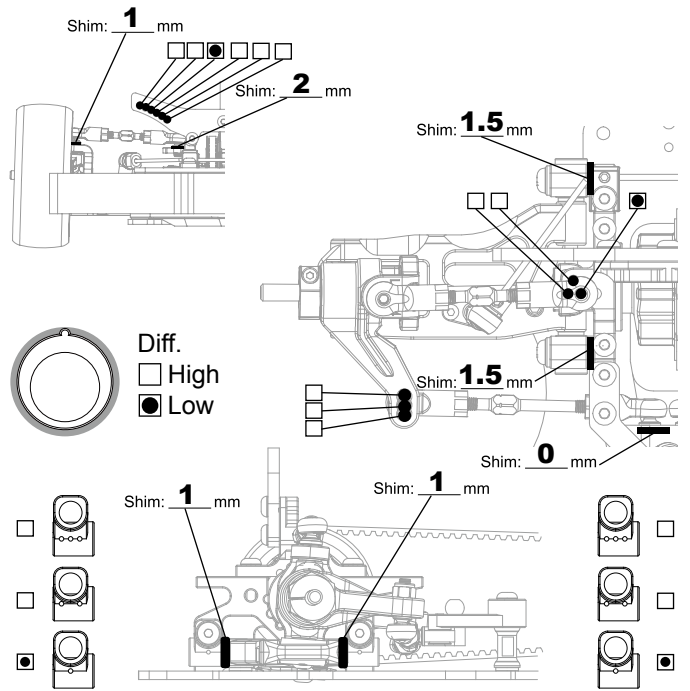


### TRACK CONDITIONS

Type:  Carpet  Asphalt      Size:  Open  Med.  Tight  
 Place:  Indoor  Outdoor      Traction:  High  Med.  Low  
 Surface:  Smooth  Med.  Bumpy      Track Temp/Air Temp: \_\_\_\_\_ / \_\_\_\_\_  
 Note: \_\_\_\_\_

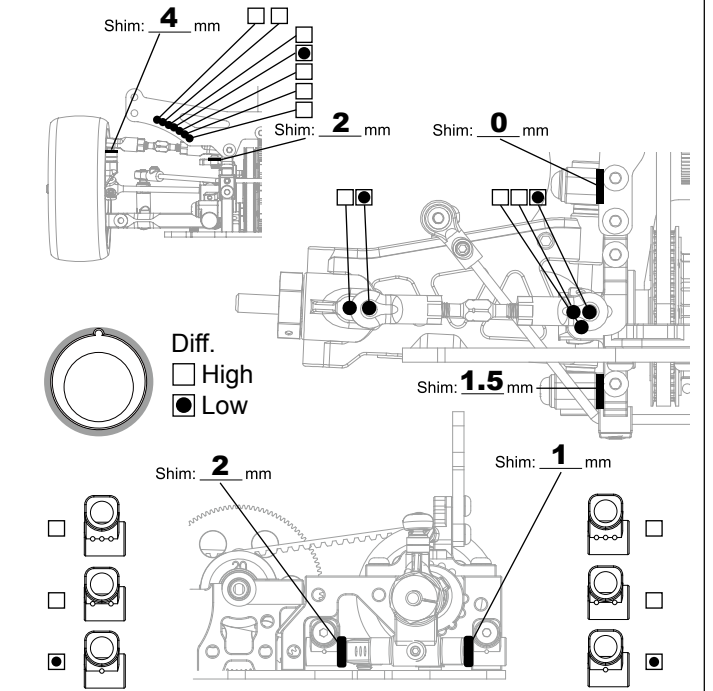
### FRONT SUSPENSION

Track Width: **186** mm  Gear Diff **500000** wt  
 Toe Angle: **+1°**  Ball Diff  
 Caster: **4°**  One Way  
 Camber: **-2°**  Spool  
 Ride Height: **5** mm Anti-Roll Bar:  $\varnothing$  **1.4** mm  
 Down Stop: **6** mm

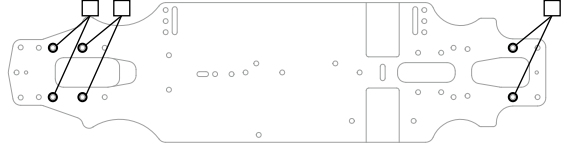
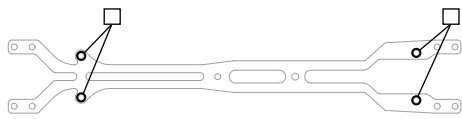


### REAR SUSPENSION

Track Width: **189** mm  Gear Diff **1000** wt  
 Toe Angle: **-3°**  Ball Diff  
 Camber: **-1.5°**  Spool  
 Ride Height: **5.5** mm  
 Down Stop: **5** mm Anti-Roll Bar:  $\varnothing$  **1.2** mm



### STIFF SETTING



### ELECTRONICS

Servo: \_\_\_\_\_  
 ESC: \_\_\_\_\_  
 Battery: \_\_\_\_\_

### DRIVE RATIO

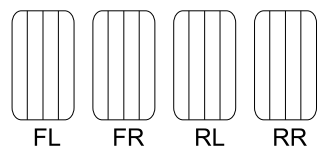
Spur **110** T  
 Pinion \_\_\_\_\_ T X1.9= \_\_\_\_\_

### MOTOR

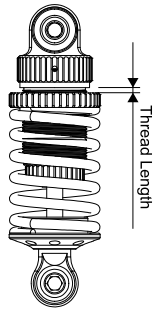
Brand: \_\_\_\_\_  
 Turns: \_\_\_\_\_  
 Timing: \_\_\_\_\_

### TIRES

Insert: \_\_\_\_\_  
 Wheel: \_\_\_\_\_  
 Shore/deg: \_\_\_\_\_  
 Compound: \_\_\_\_\_  
 Tire Temp: \_\_\_\_\_  
 Tire additive: \_\_\_\_\_  
 Treated Area



### SHOCKS

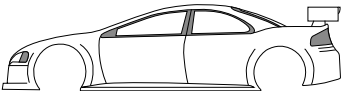


Hole Size: F **1.1 mm** R **1.1 mm**  
 Holes In Piston: F **3** R **3**  
 Oil wt: F **600** R **600**  
 Springs: F k-factory 27 R k-factory 25  
 Rebound: F \_\_\_\_\_ R \_\_\_\_\_  
 Bladder Note: \_\_\_\_\_  
 Thread Length: F \_\_\_\_\_ R \_\_\_\_\_

### ESC

Punch: \_\_\_\_\_  
 Initial Brake: \_\_\_\_\_  
 Drag Brake: \_\_\_\_\_  
 ESC Timing  Turbo Timing

### BODY



Body: \_\_\_\_\_  
 Wing Height: \_\_\_\_\_  
 Wing Position: \_\_\_\_\_