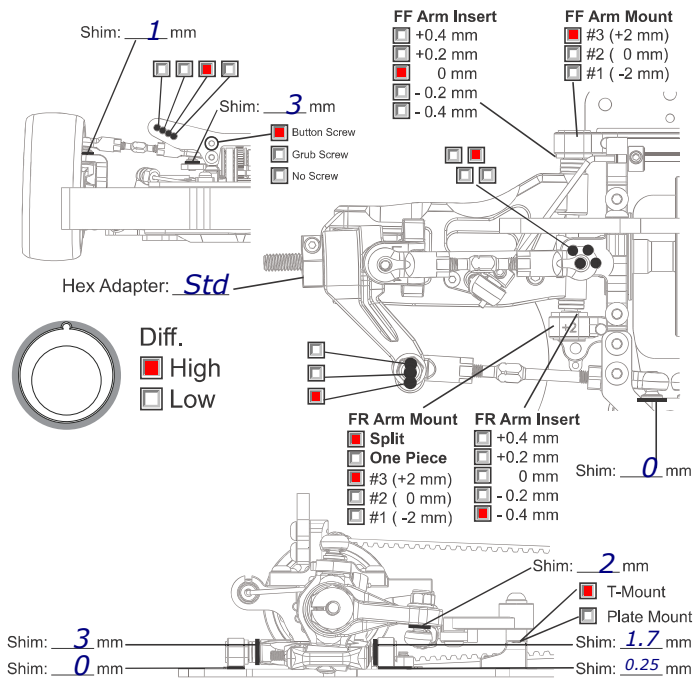


TRACK CONDITIONS

Type : Carpet Asphalt Size: Open Med. Tight
 Place : Indoor Outdoor Traction: High Med. Low
 Surface: Smooth Med. Bumpy Track Temp/Air Temp: _____ / _____
 Note: Fr arme insert -0,6

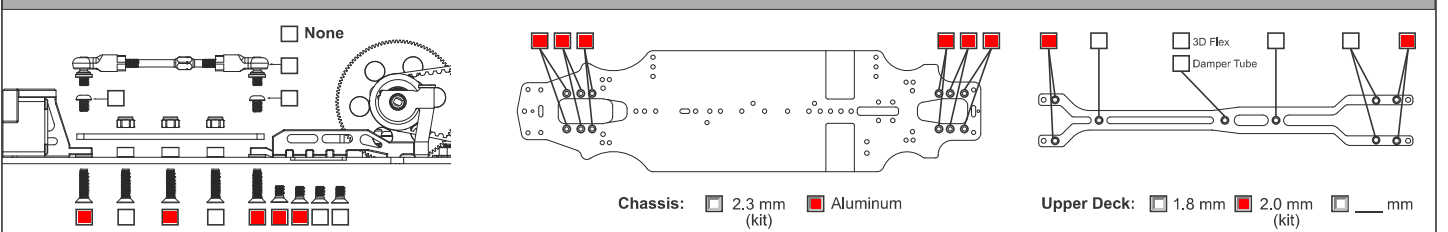
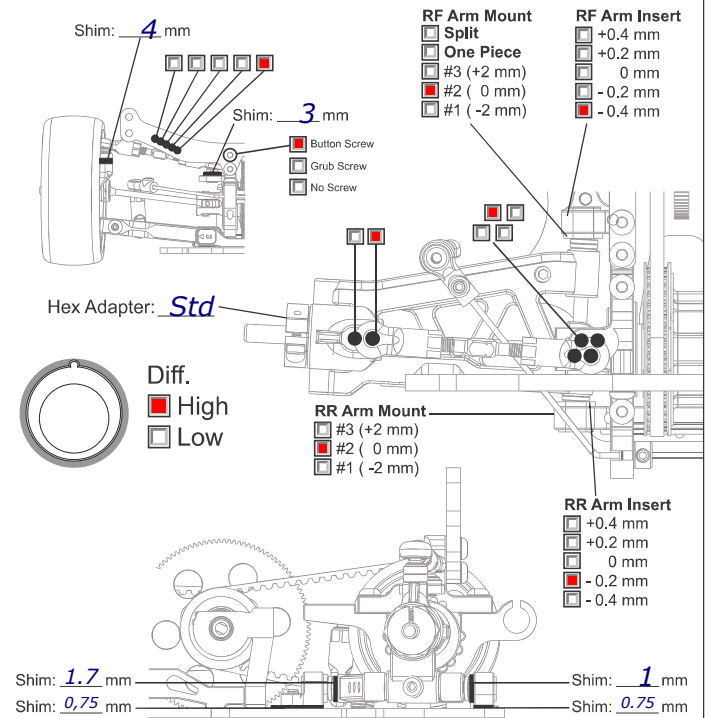
FRONT SUSPENSION

Track Width: _____ mm Gear Diff _____ wt
 Toe Angle: 1 ° Spool
 Caster: 4 °
 Camber: 1.8 °
 Ride Height: 5.0 mm Anti-Roll Bar: Ø 1.3 mm
 Down Stop: 5.6 mm



REAR SUSPENSION

Track Width: _____ mm Gear Diff 9000 wt
 Toe Angle: 2.5 °
 Camber: 2 °
 Ride Height: 5.2 mm
 Down Stop: 4.4 mm Anti-Roll Bar: Ø 1.3 mm

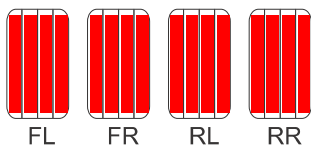


ELECTRONICS
 Servo: _____
 ESC: _____
 Battery: _____

DRIVE RATIO
 Spur 110 T
 Pinion 27 T $\times 1.9 = 7.74$

MOTOR
 Brand: X22
 Turns: 4.5
 Timing: -10

TIRES
 Insert: _____
 Wheel: Volante 28
 Shore/deg: _____
 Compound: _____
 Tire Temp: _____
 Tire additive: Cs
 Treated Area



SHOCKS

Hole Size: F Std R _____
 Holes In Piston: F _____ R _____
 Shock Oil WT: F 500 R 500
 Shock Springs: F P2.9 R P2.9
 Shock Rebound: F _____ R _____
 Bladder Note: _____
 Thread Length: F _____ R _____
 Shock Length: F _____ R _____

ESC
 Punch: _____
 Initial Brake: _____
 Drag Brake: _____
 ESC Timing Turbo Timing

BODY

Body Position: _____ Body: Type-s
 Wing Height: Max
 Wing Position: Max