

 performance and technology

ECLIPSE **2**



WHEELS AND SERVO NOT INCLUDED

Schumacher
racing-cars.com

SCHUMACHER RACING
71-73 TENTER ROAD
MOULTON PARK
NORTHAMPTON
NN3 6AX
U.K

S1475 ISS1


1/12TH LMP CHASSIS

Additional Items Required

Transmitter and receiver



CR044 Curved Body Scissors



U2818 Schumacher Body Reamer



1/12th Servo



CR528 Snipe Nose Serrated Pliers 125mm



U2789 Hex Driver - 1.5mm
U2790 Hex Driver - 2.0mm
U2791 Hex Driver - 2.5mm
U2792 Hex Driver - 3.0mm



Speed Controller



U2795 M3 Nut Driver



Soldering Iron
CR266 40w
CR275 80w



Li-Po Battery



U3107 - Solder



Motor



Pinion Gear



Battery Charger



CR161 UAC50 Charger 12v/110-240v 6A

Bodyshell and Paint



Wheels and tyres



ECLIPSE 2
A NEW BEGINNING

Schumacher Racing stocks and distributes the following manufacturers products and full product listings are available on our website at

www.racing-cars.com

PLEASE NOTE THAT SOME OF THE PRODUCT RANGES BELOW ARE ONLY AVAILABLE IN THE UNITED KINGDOM.

CS-ELECTRONIC TEAM SOREX

MonkeyKingRC

WLtoys

DIGITAL SERVO
HIGHEST

CORE-RC

HOBBY WING

HERO X

EDS
Specialised RC Tools

AM
ARROWMAX

Intellect

Speed
Passion

SXT
TRACTION COMPOUND

RHEINARD
R33D

Killerbody

DASH

RIDE

SKYRC

Team
Bomber

EP
Enrichpower

Mot
Tech

MIP

LC RACING

contact
RC RACING TYRES

ANDERSON
Racing

KO PROPO
DIGITAL PROPORTIONAL SYSTEM
http://www.kopropropo.co.jp/

HOBBYNOX

ISDT

RUSH

SANWA
1/10 2.4GHz SPECIALISTS

FANTOM

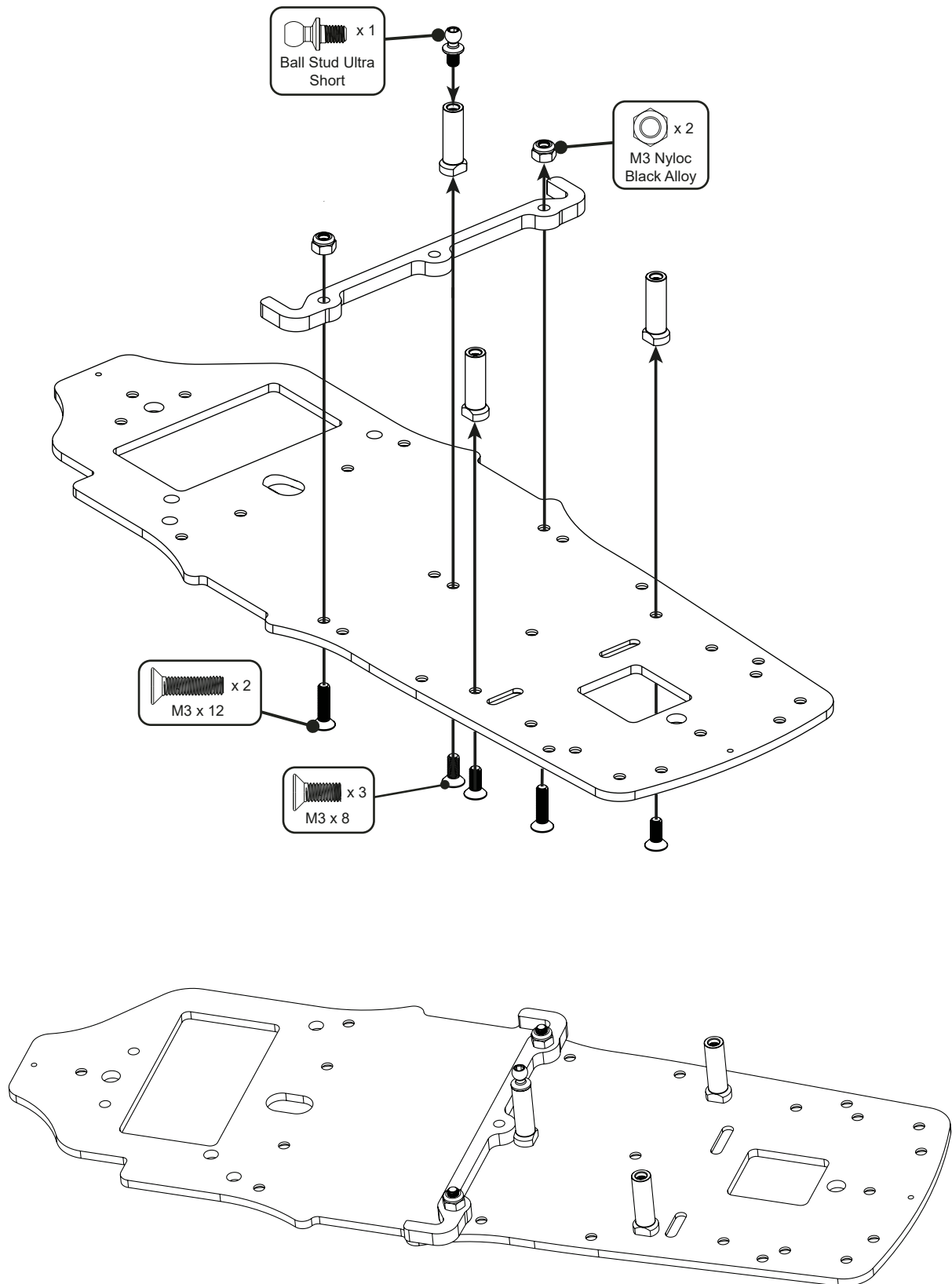
LRP
1/10 BLUE IS BETTER

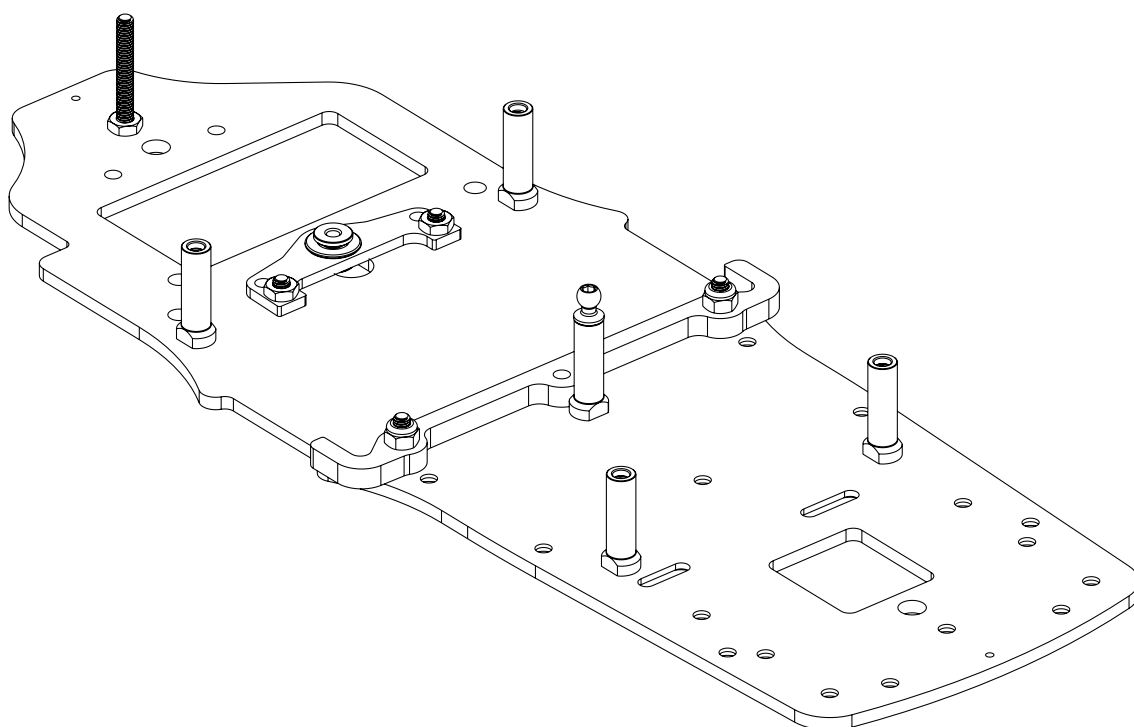
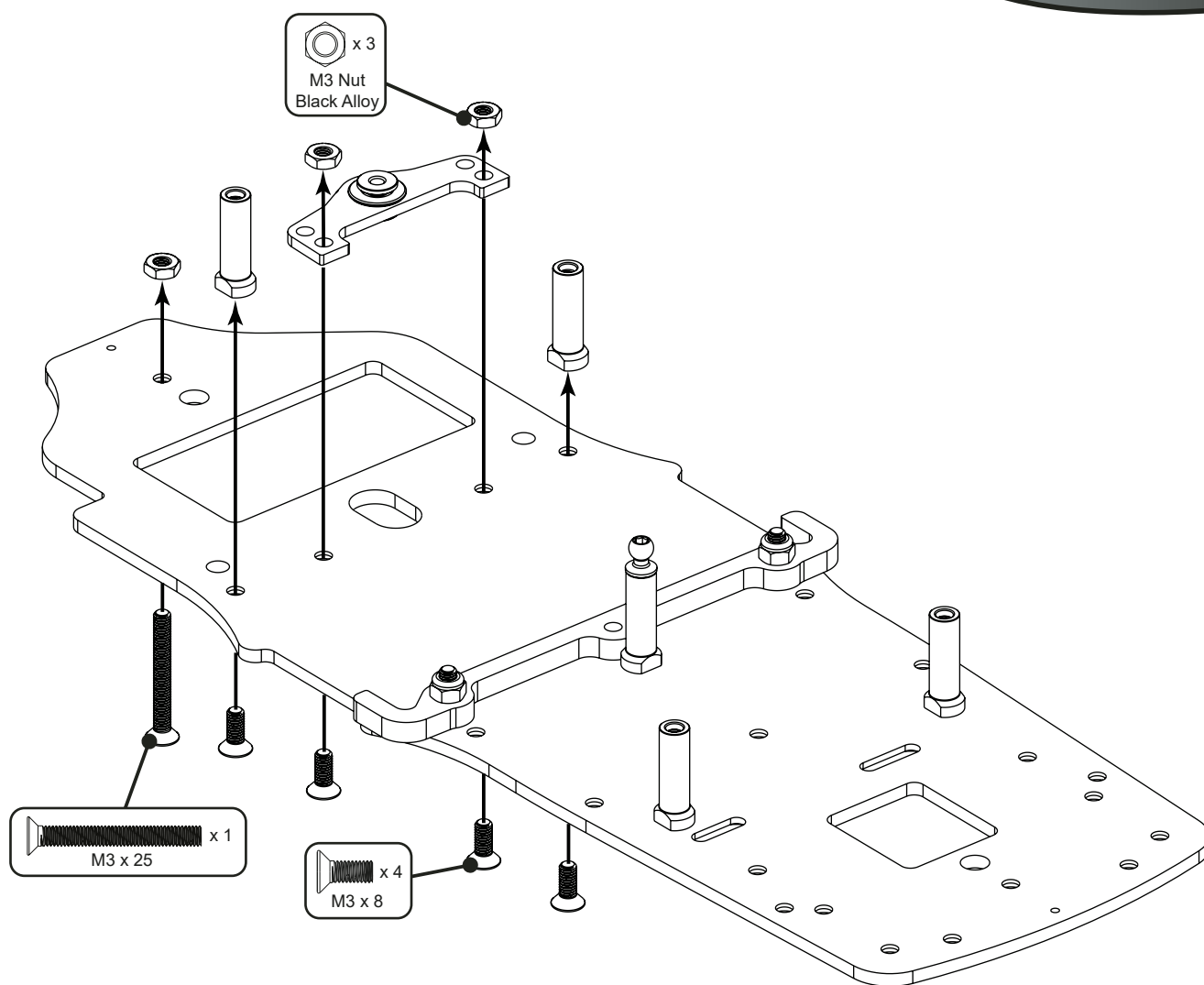
SHIMIZU
Racing

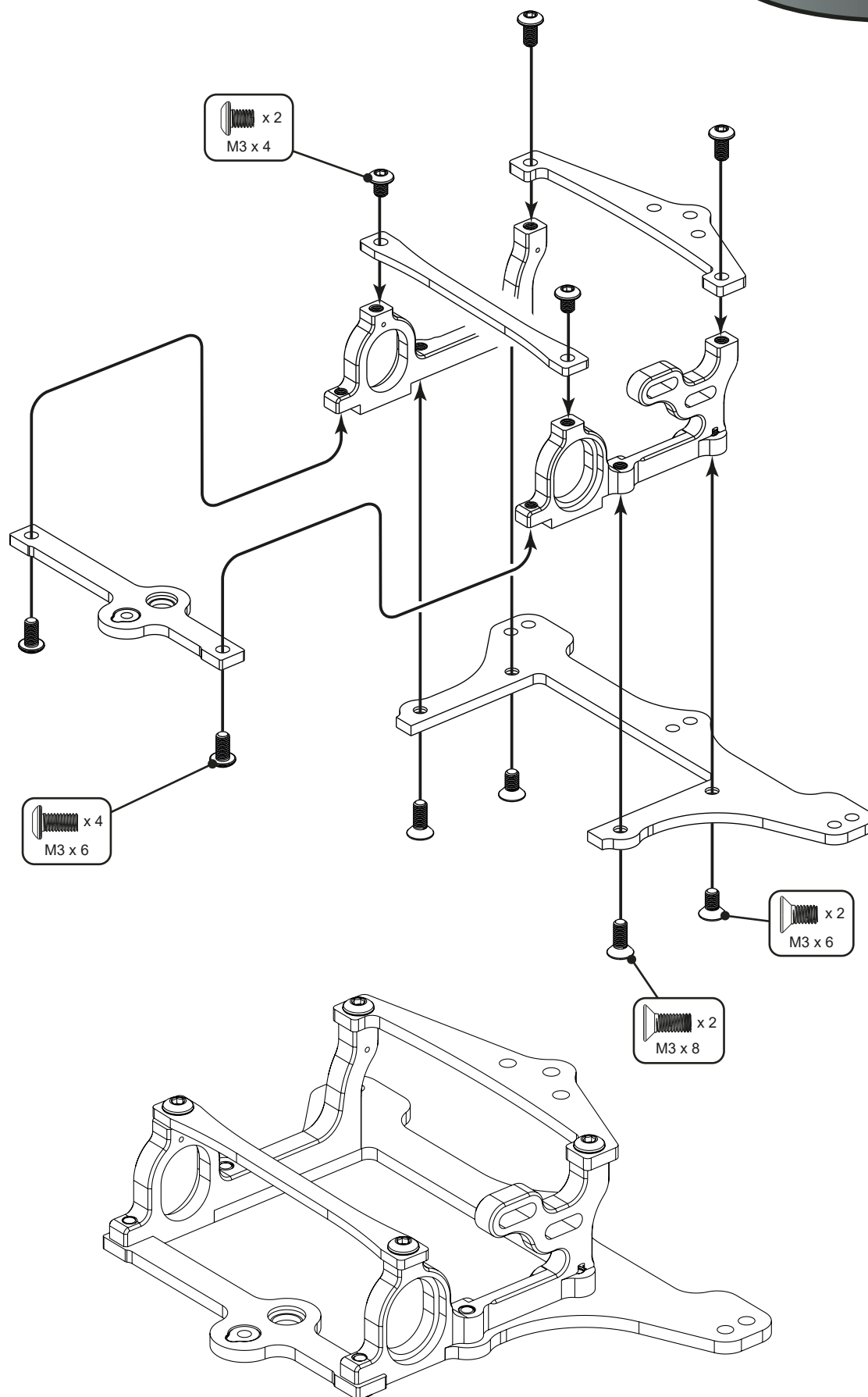
NANPA
RACING

IMPORTANT SAFETY NOTES

- This product is not suitable for children under the age of 14, without the direct supervision of a responsible adult.
- Select an area for assembly that is away from the reach of small children.
- The parts in this kit are small and can be swallowed by children causing choking and possible internal injuries.
- Exercise care when using hand tools and sharp instruments during assembly.
- Carefully read all manufacturers warnings and cautions for any additional items used in the construction.
- In line with our policy of continuous development the exact details of the kit may vary.
- DO NOT use this car on public roads or in places where it can interfere with traffic, people or animals.
- Always check the operation of the radio with the wheels off the ground, before using the car.
- Make sure the radio and car batteries are fully charged before use.
- Disconnect and remove the battery from the car when not in use.
- Always store and charge LiPo batteries in a fireproof container.
- DO NOT put fingers or any objects inside rotating or moving parts as this may cause injury.
- Make sure the charger is correctly set for the type of battery you are using. Incorrect charging may cause a fire.
- Insulate all exposed electrical wiring. Exposed or damaged wires can cause short circuits and fire.
- The motor and speed controller can become hot during use. DO NOT touch them immediately after using your car as this may cause injury.

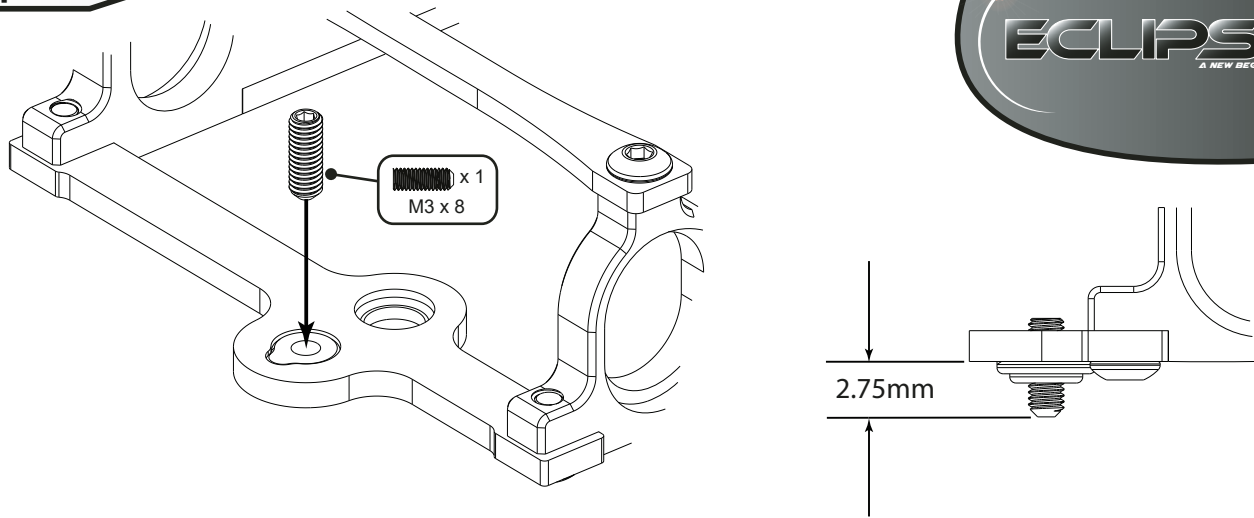




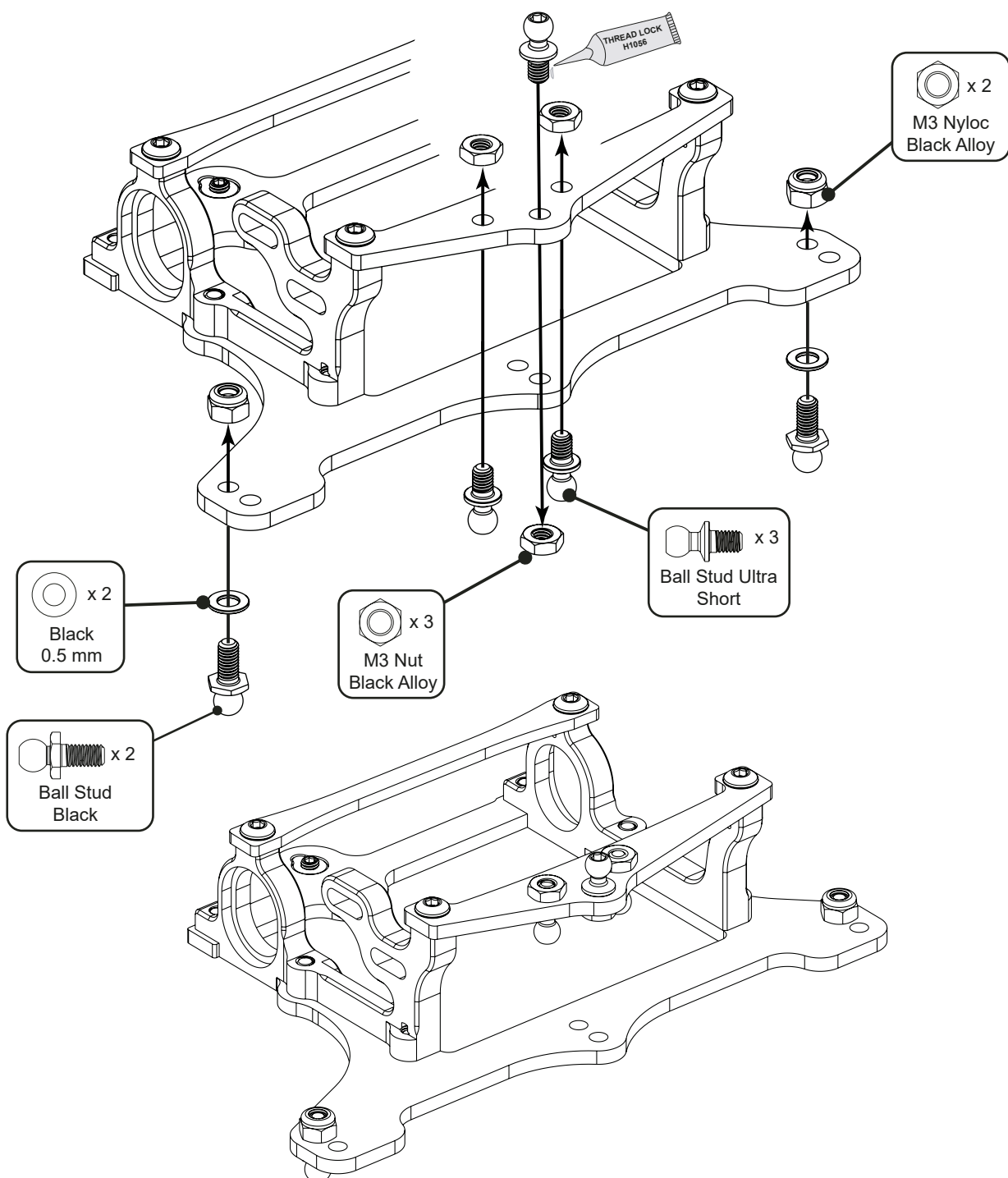


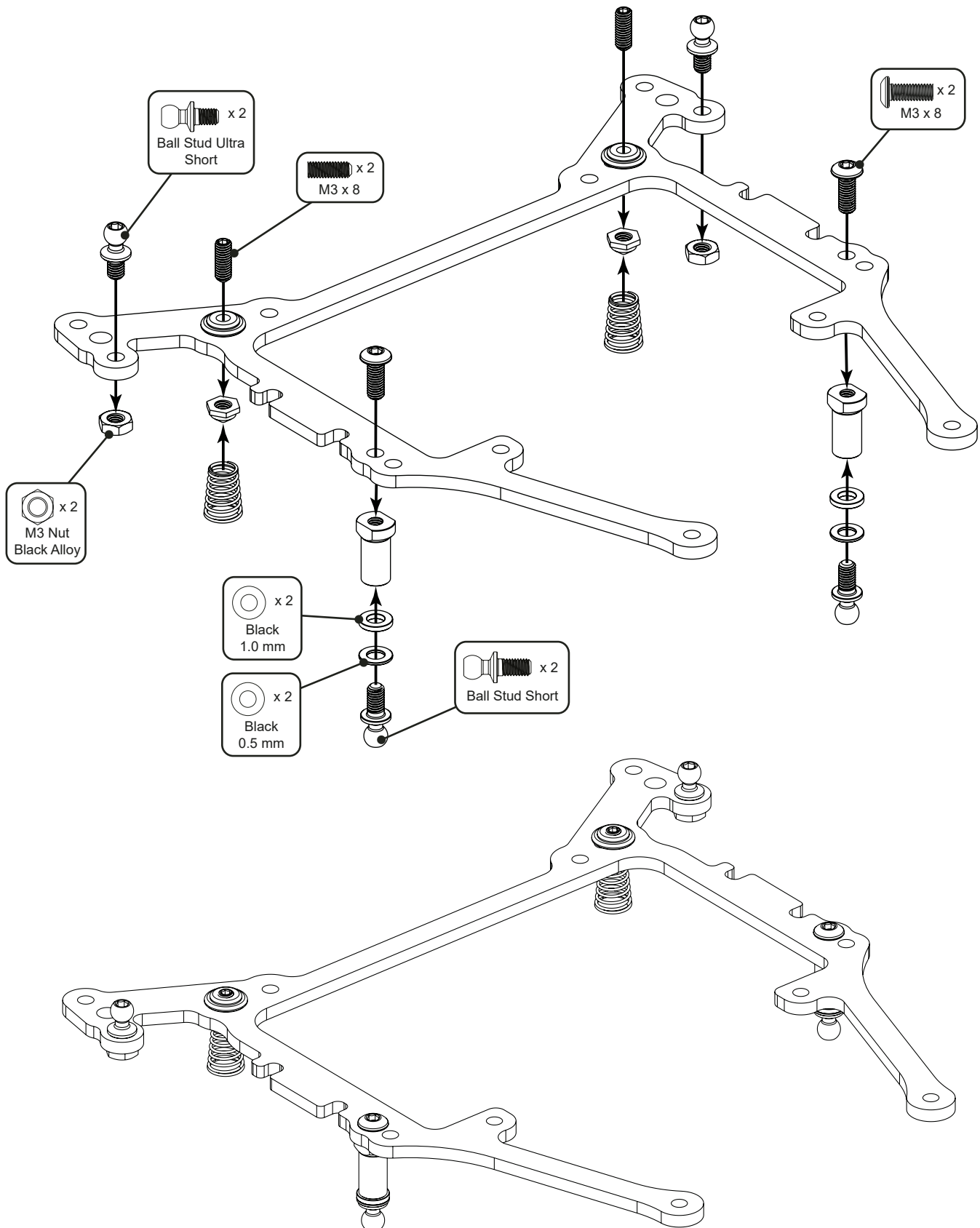
Step 4 A

ECLIPSE 2
A NEW BEGINNING

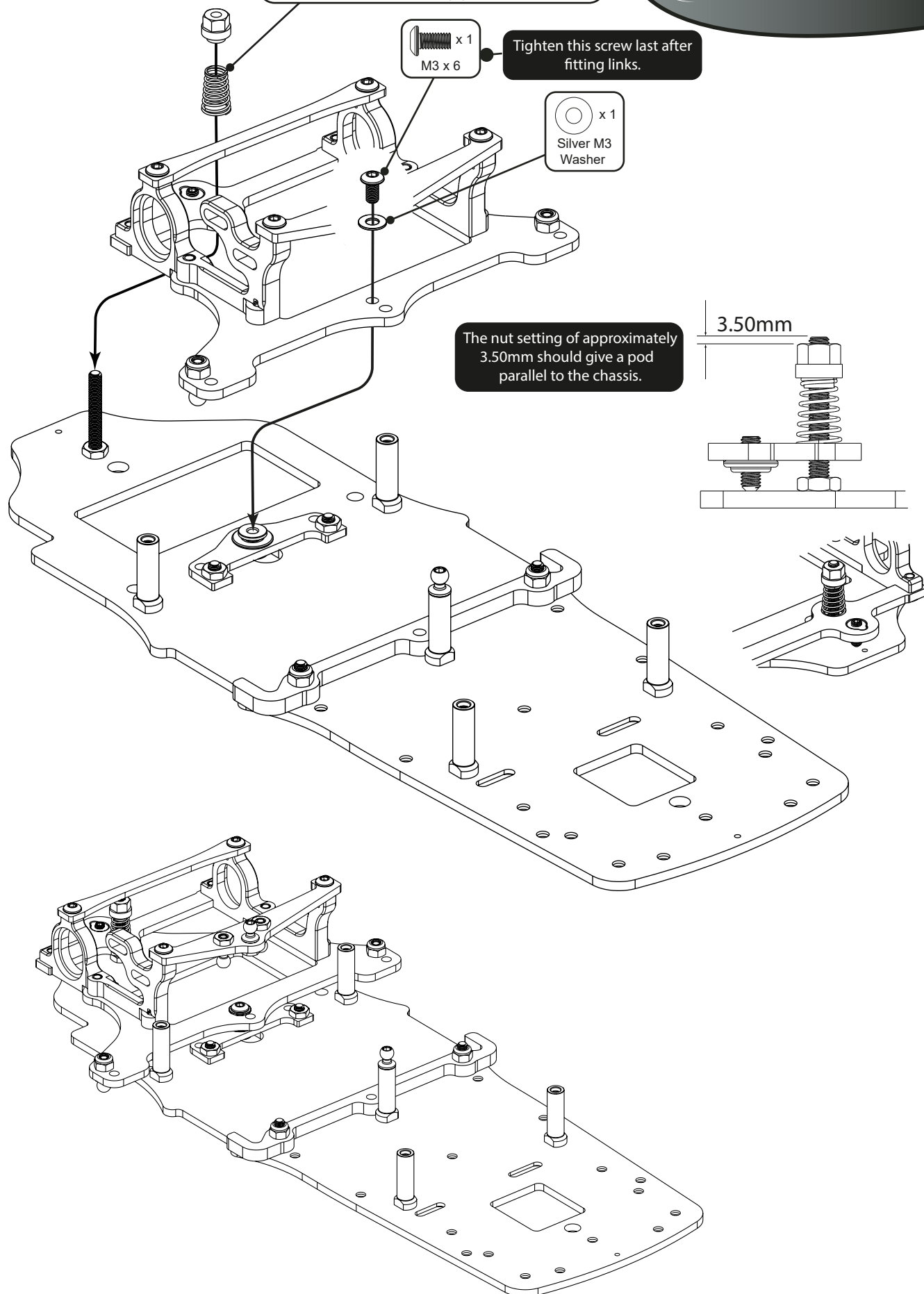


Step 4 B

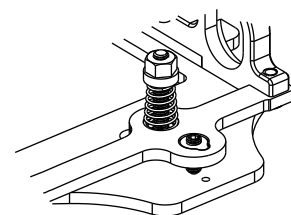
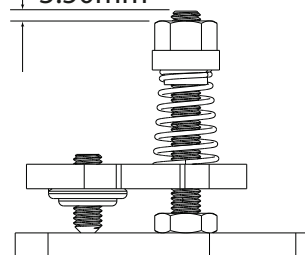


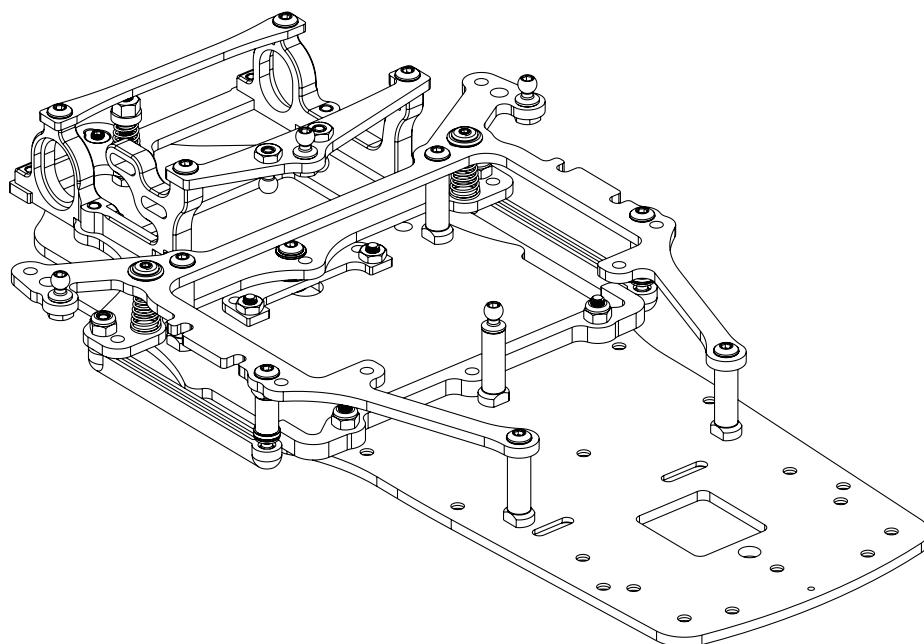
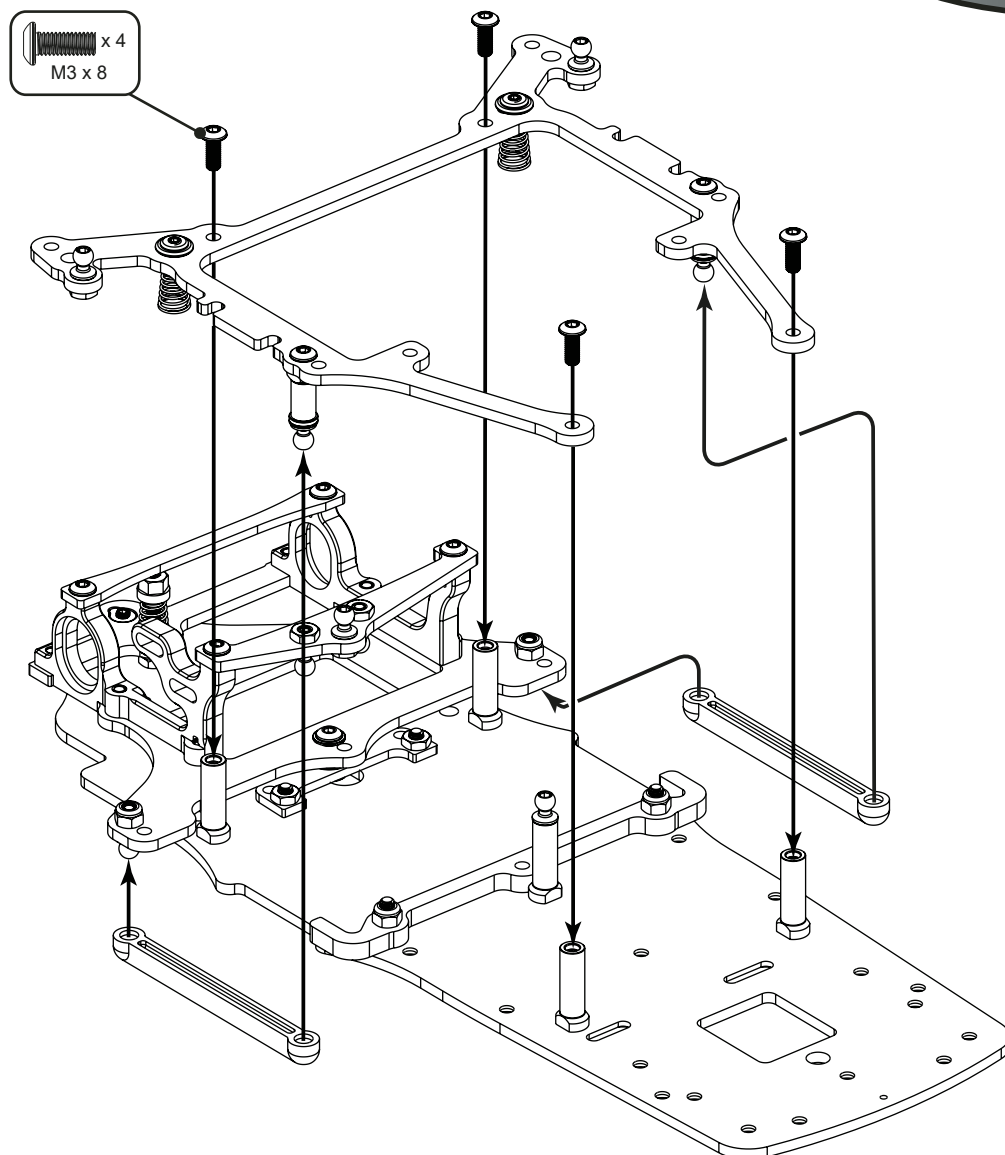


REAR SPRING OPTIONS					
SOFTER					HARDER
U4838 BLACK	U4839 SILVER	U4840 GOLD	U4841 NICKEL (KIT)	U7322 RED DOT	U7323 BLACK ULTRA



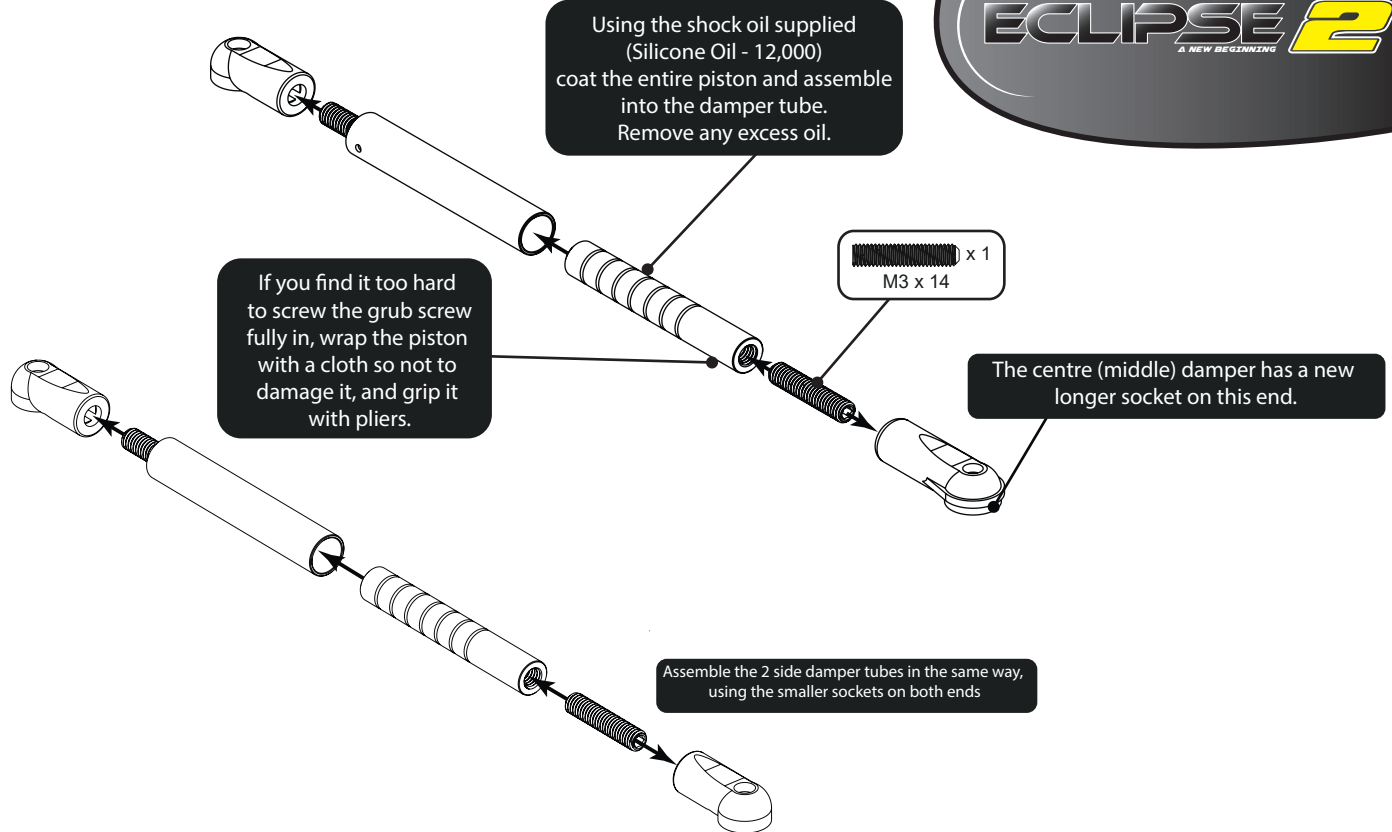
3.50mm



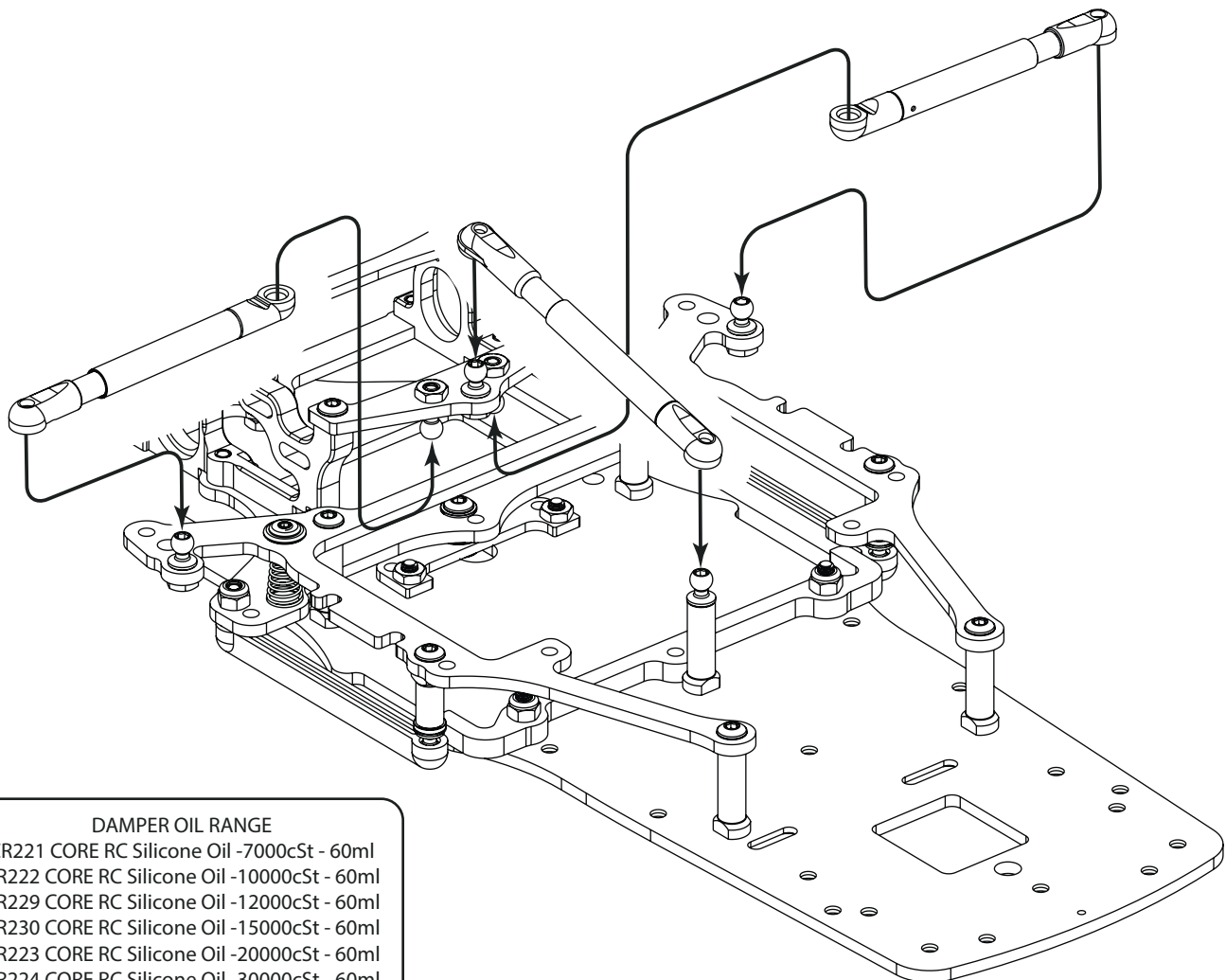


Step 7 A

ECLIPSE 2
A NEW BEGINNING

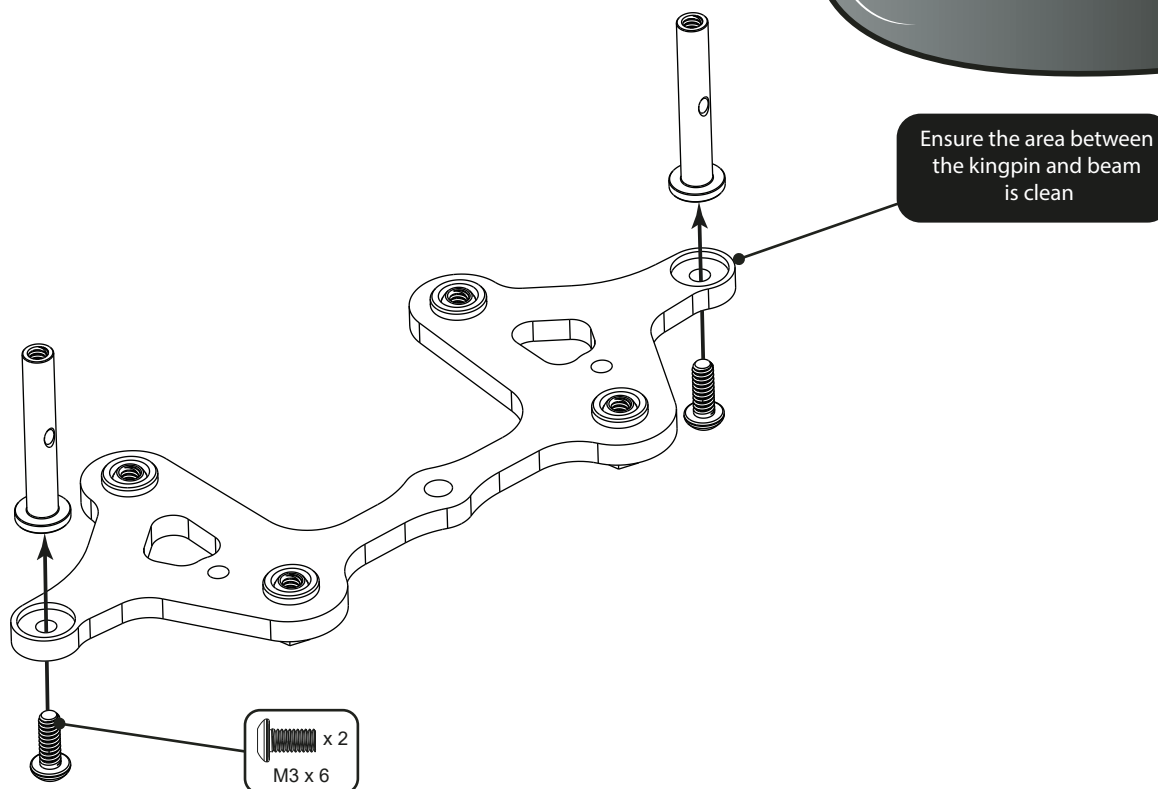


Step 7 B



Step 8

ECLIPSE 2
A NEW BEGINNING

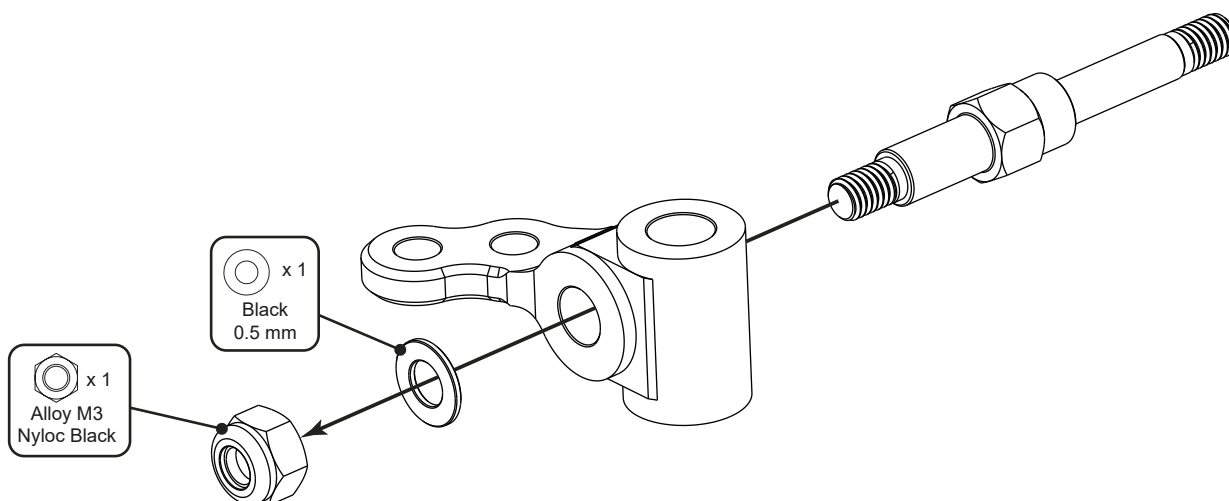


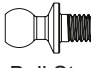
Step 9

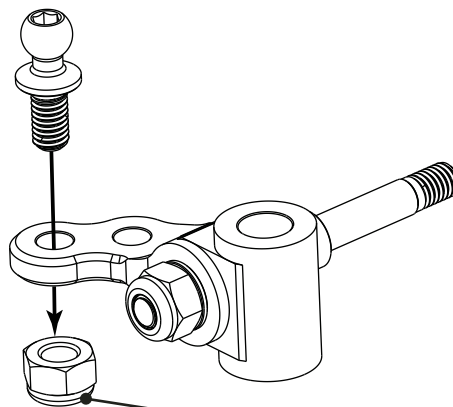
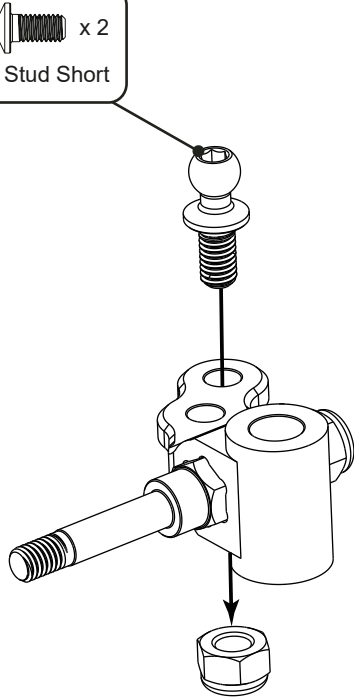
Please note step 9 has been removed from this build.

Step 10

Build two the same.

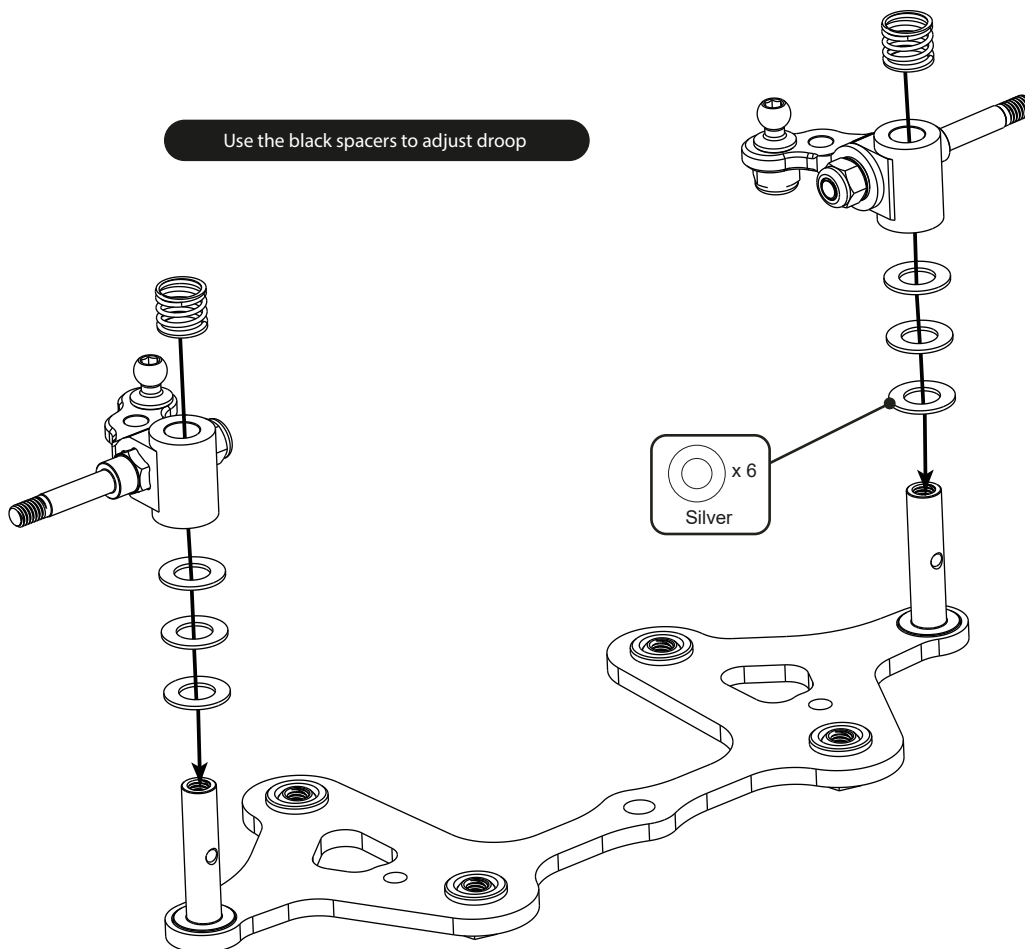


 x 2
Ball Stud Short



 x 2
Alloy M3
Nyloc Black

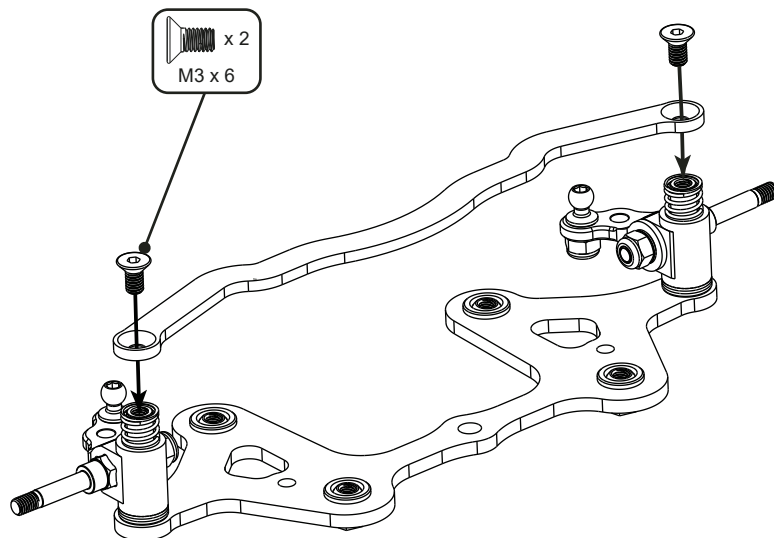
Use the black spacers to adjust droop



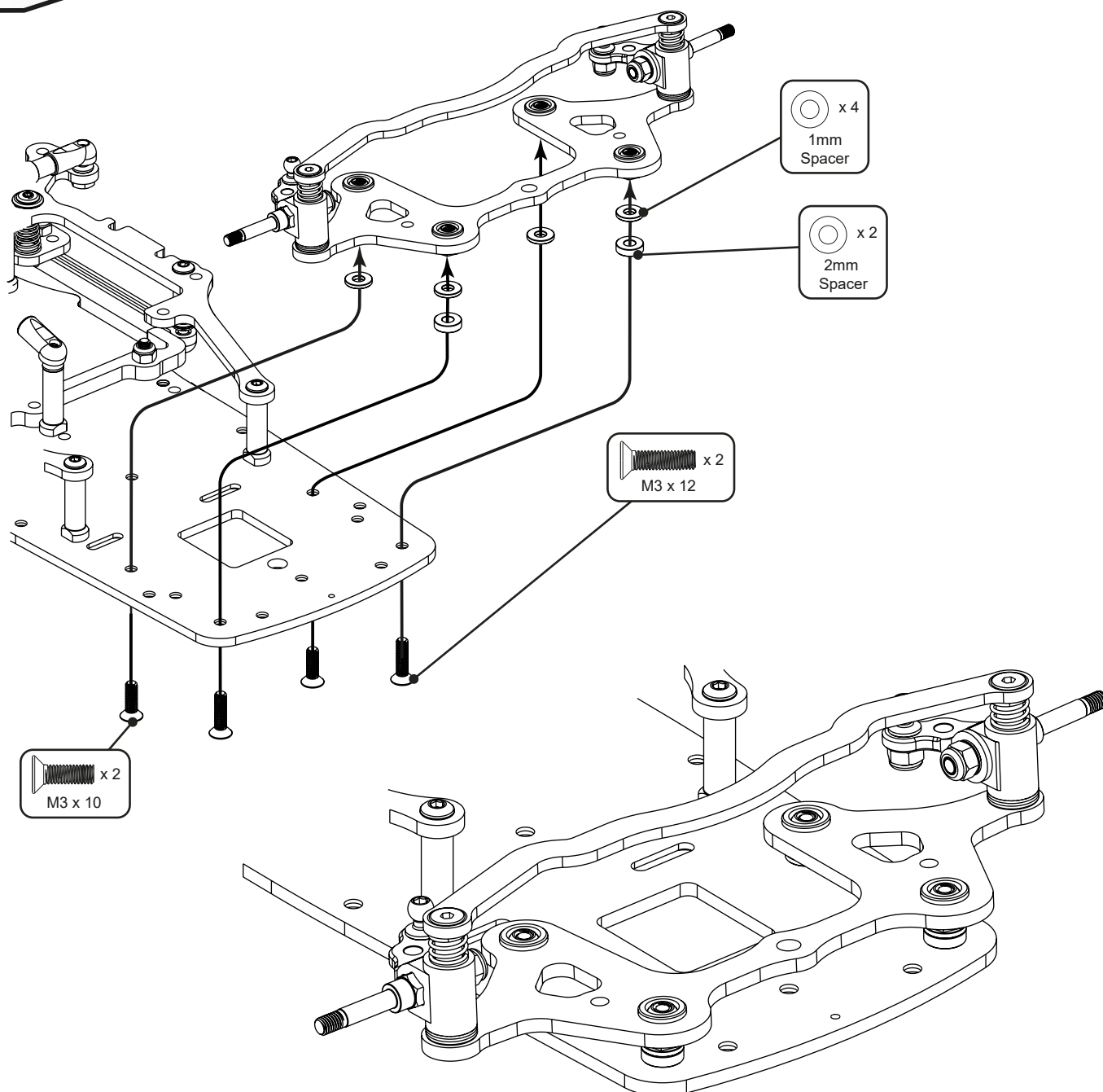
 x 6
Silver

Step 13

ECLIPSE 2
A NEW BEGINNING



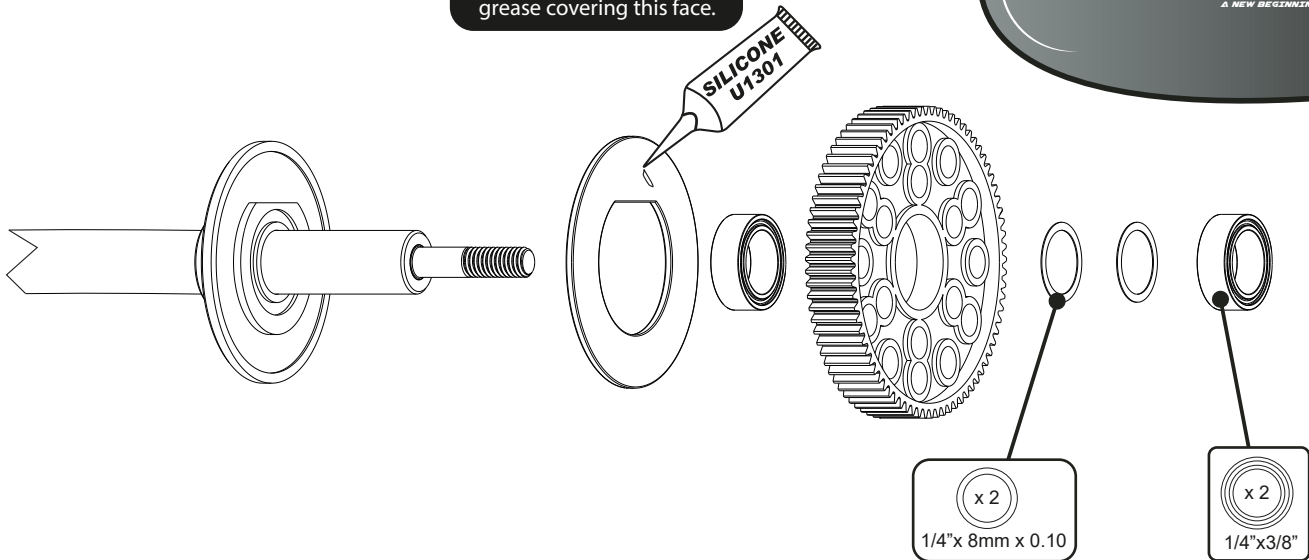
Step 14



Step 15

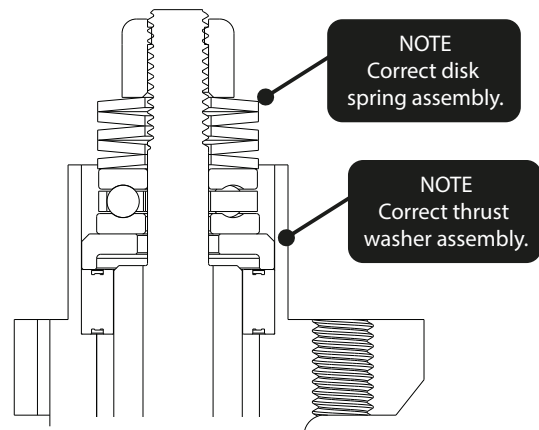
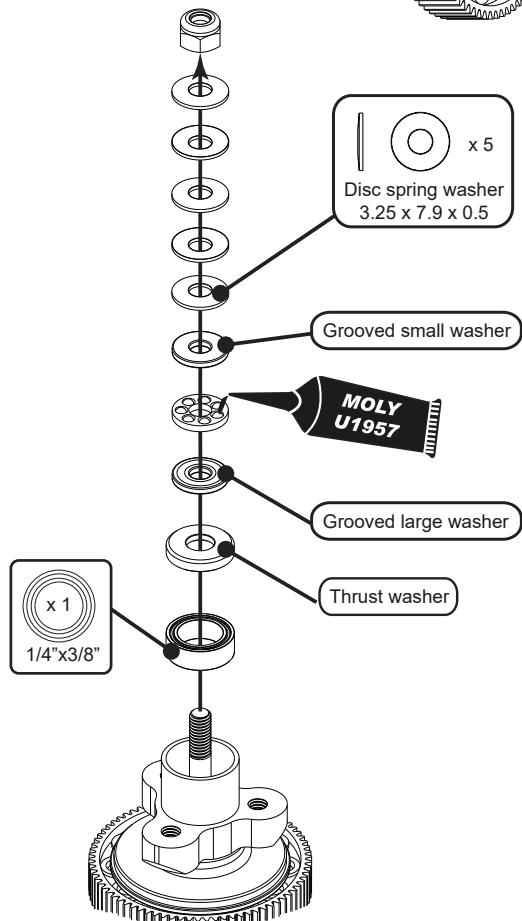
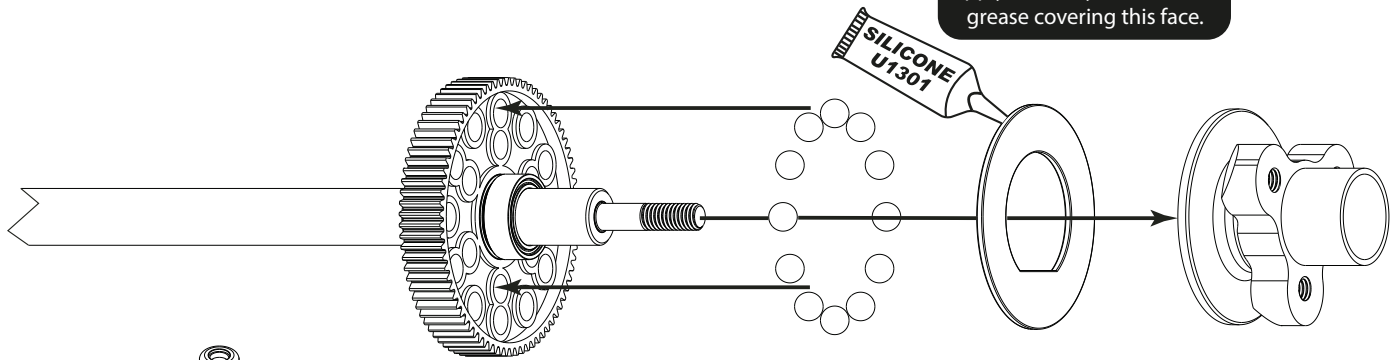
Apply a thin layer of silicone grease covering this face.

ECLIPSE 2
A NEW BEGINNING



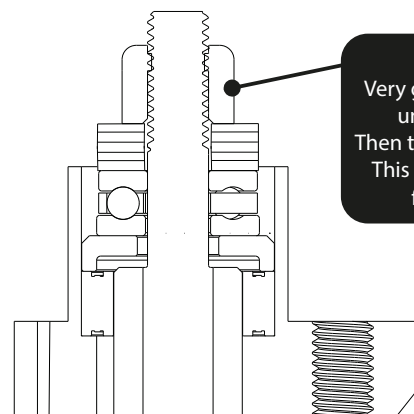
Step 16

Apply a thin layer of silicone grease covering this face.



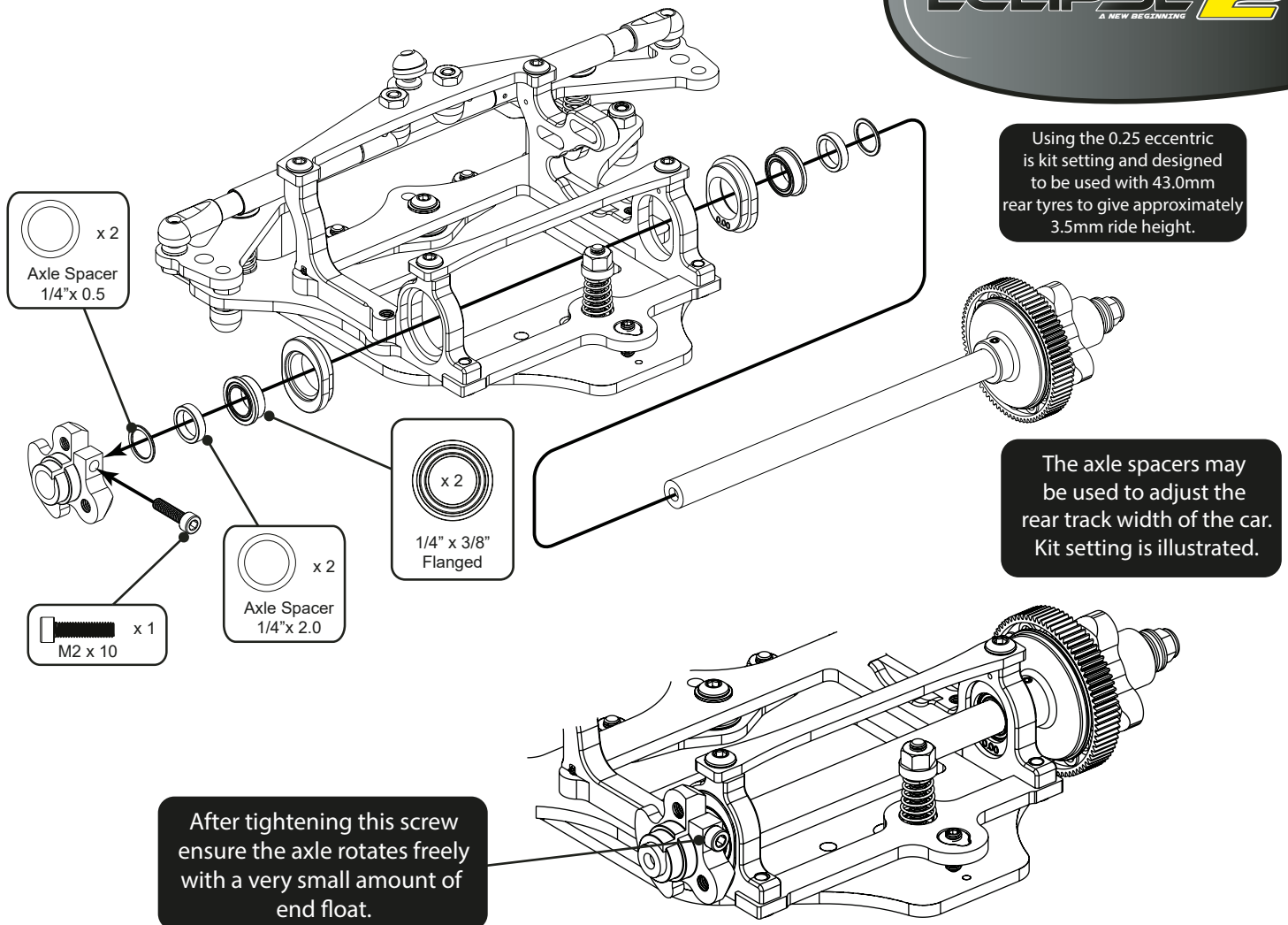
NOTE
Correct disk
spring assembly.

NOTE
Correct thrust
washer assembly.

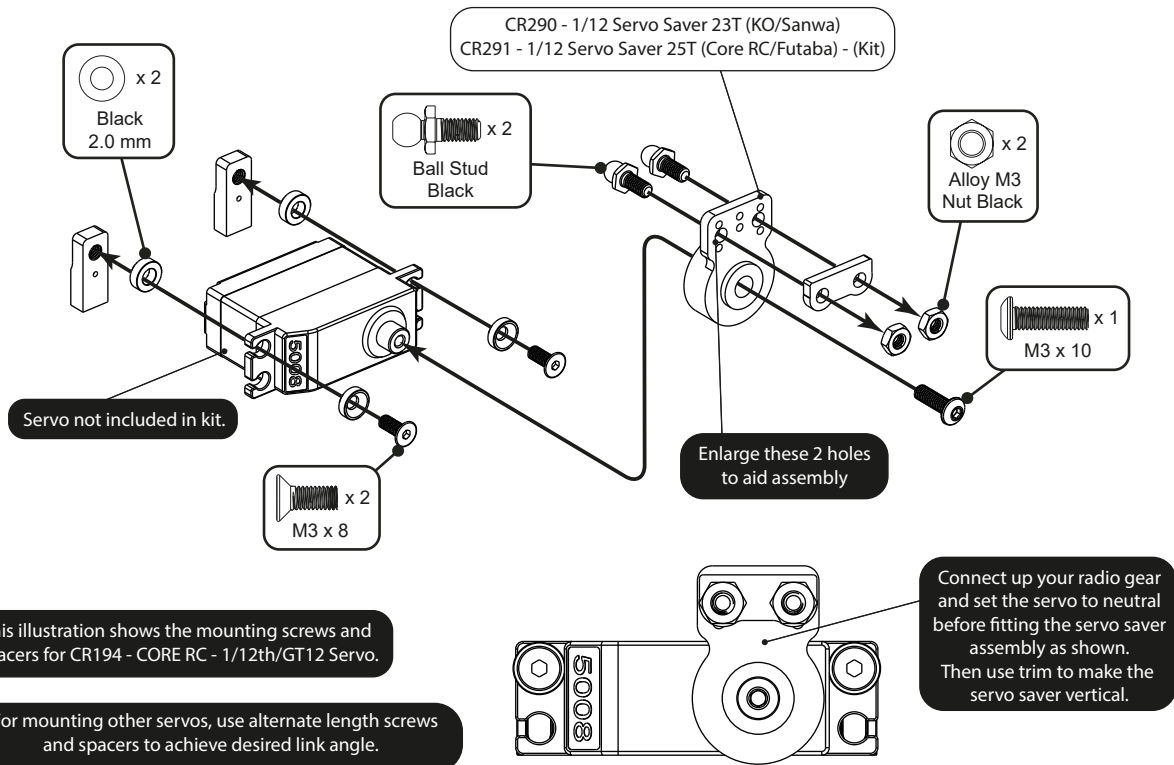


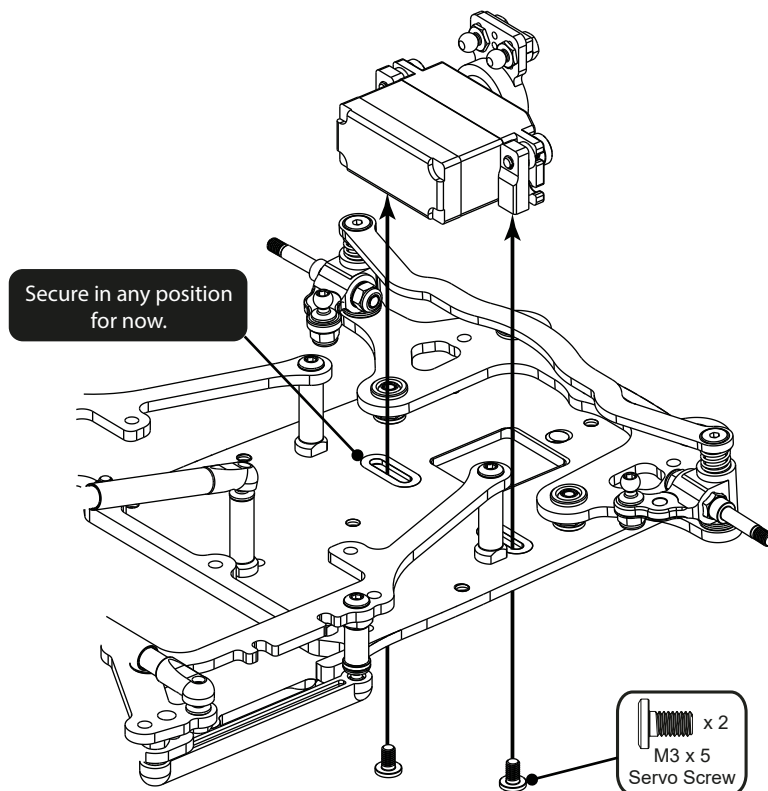
DIFF SETTING
Very gradually tighten the nut
until diff action begins.
Then tighten the nut 360° more.
This setting should be good
for most conditions.

Step 17

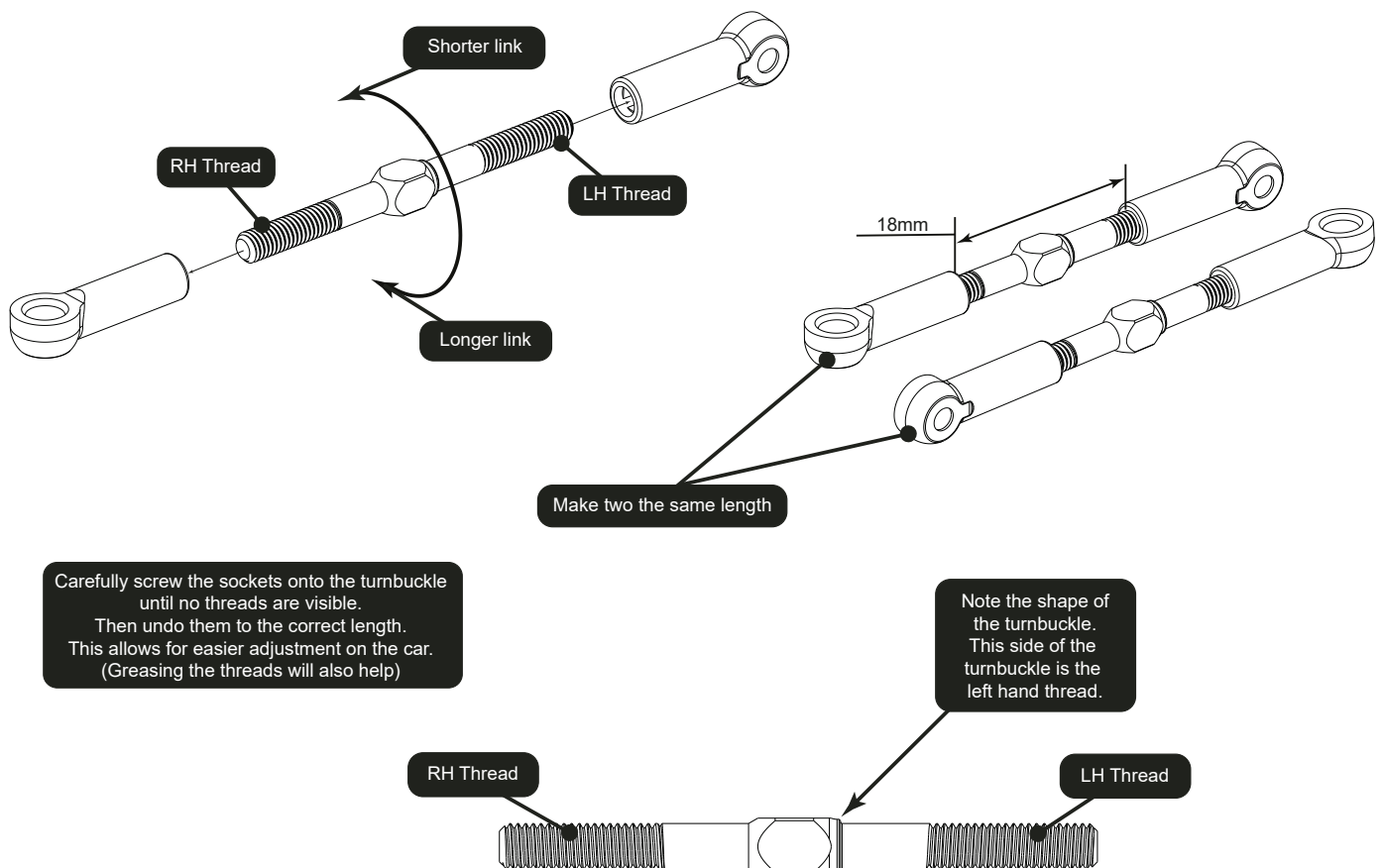


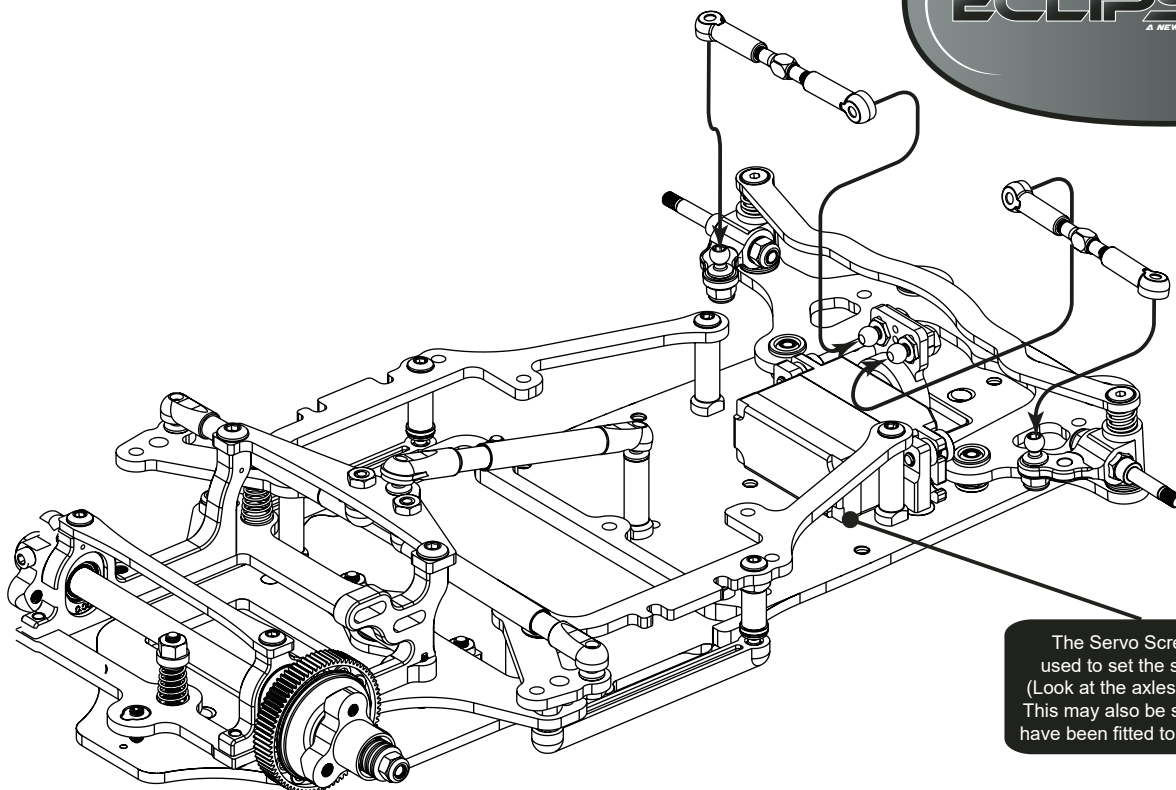
Step 18 A





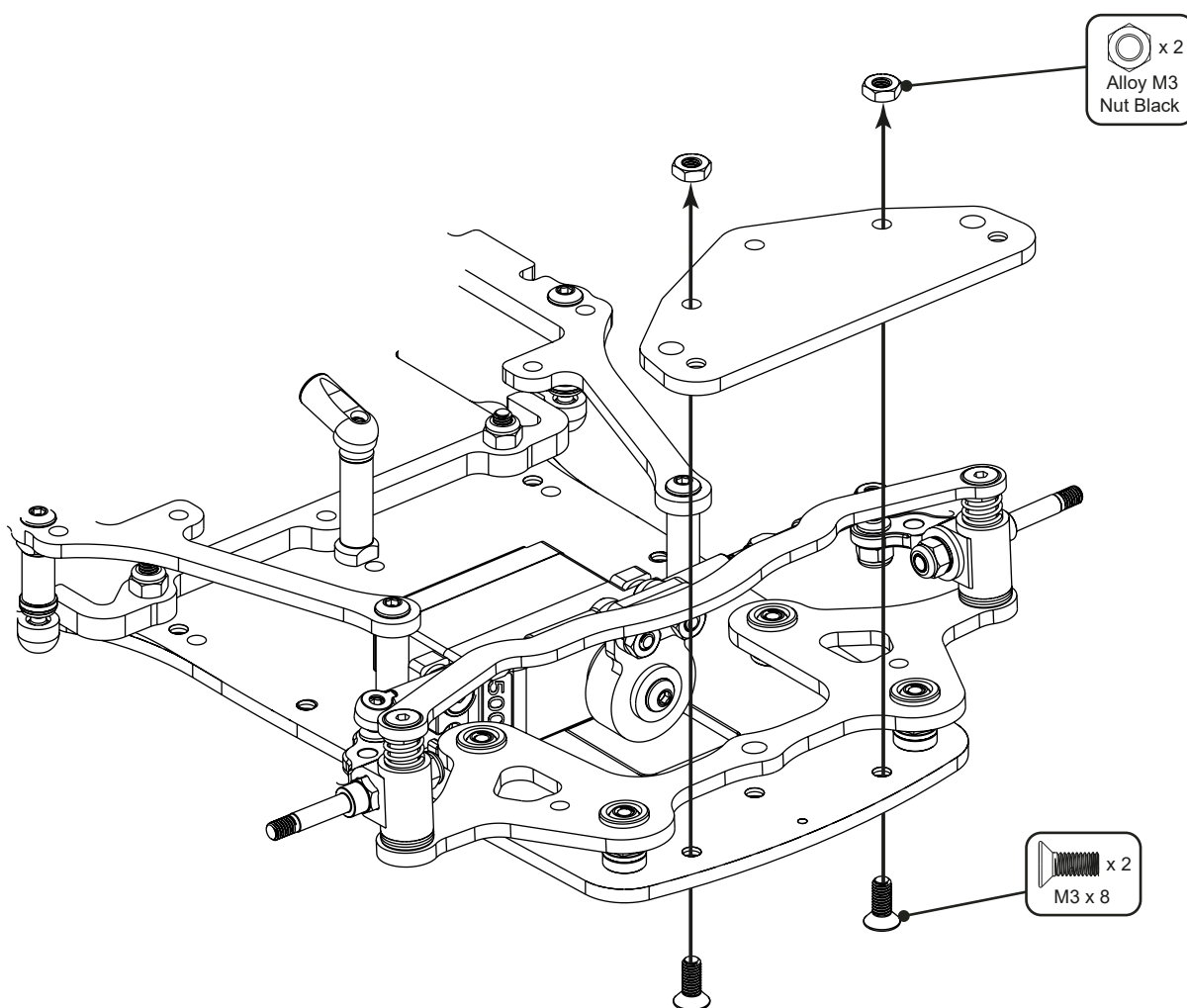
Step 19 A





The Servo Screws may now be used to set the servo in the center. (Look at the axles to check alignment. This may also be set when the wheels have been fitted to make it even easier)

Step 20



KIT

K177 Eclipse 2 - 1/12th Circuit - Kit

CHASSIS PARTS

CR290 1/12 Servo Saver 23T for Sanwa & KO
CR291 1/12 Servo Saver 25T for Core RC and Futaba
U4627 Chassis Post Long - Eclipse
U4950 Body Post Mouldings - Eclipse
U4951 Roll Mast Mount - Eclipse
U4952 Roll Mast - Eclipse
U4953 Foam Bumper - Eclipse
U4959 C/F - Lipo Nest - Eclipse
U4962 C/F - Bumper Mount - Eclipse
U4963 C/F - Pod Front Brace - Eclipse
U4964 C/F - Pod Rear Brace - Eclipse
U4965 C/F - Rear Spring Hanger - Eclipse
U4969 Chassis Post Short - Eclipse
U7475 C/F - Chassis - Eclipse 2
U7476 C/F - Front Beam - Eclipse 2
U7477 C/F - Top Deck - Eclipse 2
U7478 C/F - Pivot Mount - Eclipse 2
U7479 C/F - Camber Strap 0.75° (Kit) - Eclipse 2
U7481 C/F - Pod Base - Eclipse 2
U7485 King Pin - Eclipse 2
U7486 Alloy Servo Mounts - Eclipse 2
U7487 Manual - Eclipse 2
U7488 Lipo O Ring - Eclipse 2 - (pk6)

SUSPENSION

U3977 Moulded Links 57.2mm pk3 - SupaStox
U4243 Droop Screw Bush - Mi5 - pk4
U4244 Wishbone Sockets and Balls - Mi5 - pk4
U4273 Pro Ball Stud Ultra Short - pk4
U4274 Pro Ball Stud Short - pk4
U4298 Turnbuckle HT - 35mm - pr
U4547 Ball Sockets Long Pro-Mi5evo-(pk8) Black
U4551 Ball Sockets Short Pro-Mi5evo - pk8 Black
U4629 Damper Piston - Eclipse
U4630 Damper Unit - Eclipse
U4631 Damper Tube - Eclipse
U4814 Front Axle - Atom
U4850 Low Ball Stud (pk4) - Eclipse
U4851 Side Spring Seat (pr) - Eclipse
U4865 Kingpin Shim Set - Atom
U4866 Alloy Hub Carrier - Atom
U4968 Ball Sockets Low Profile - Eclipse - pk4

BODYSHELLS AND DECALS

MT014001 Montech - M12 Body for Pancar 1/12
MT016014 Montech - M16 Body 1/12th carpet
TB60011 Bomber TB-LMP Type A Bodyshell
TB60014 Bomber LMP Body Type Dera
TB60025 Bomber LMP Body Type Ketter - Light Weight
TB60027 Bomber LMP Body Type Ketter - Ultra Light
U3478 Decal sheet - Schumacher and Racing-Cars.Com pk3
U4966 Decal Sheet - Eclipse

SPRINGS

U4838 Rear Springs Black - Soft - Eclipse (pr)
U4839 Rear Springs Silver - Med/Soft - Eclipse (pr)
U4840 Rear Springs Gold -Med/Hard - Eclipse (pr)
U4841 Rear Springs Nickel - Hard - Eclipse (pr)
U4842 Front Springs Black - Soft - Atom (pr)
U4843 Front Springs Silver - Medium - Atom (pr)
U4844 Front Springs Gold - Hard - Atom (pr)
U4845 Spring Tuning Set Front - Atom
U4846 Spring Tuning Set Rear - Eclipse
U4847 Rear Spring Seat - Eclipse
U7322 Rear Springs Red Dot - Hard/Ultra - Atom / Eclipse (pr)
U7323 Rear Springs Black - Ultra - Atom / Eclipse (pr)
U7489 Front Springs White - Ultra - Atom/Eclipse 2 (pr)

BEARINGS AND BALLS

H1031 Bearing Blaster Aerosol 500ml
U1300 Axle Grease - Pot
U1301 Silicone Diff Lube - Pot
U1957 Moly Grease - Pot
U4808 1/8 Chrome Steel Ball (pk12) - Eclipse
U4809 Ball Bearing - 1/4x3/8x1/8 Shield - (pr)
U4811 1/8 Silicone Nitride Ball (pk12)
U4812 Ceramic Bearing 1/8x5/16x9/64 Flanged (pr)
U4979 Ceramic Bearing 1/4x3/8x1/8 Flanged (pr)
U4980 Ball Bearing - 1/4x3/8x1/8 Flanged Yellow Shield - (pr)
U4981 Ball Bearing - 1/8x5/16 Flanged Yellow Shield - (pr)

TRANSMISSION

CR509 Kimbrough - Thin Pro Spur Gear 88T - 64DP - #709
CR513 Kimbrough - Spur Gear 78T - 64DP - #202
CR514 Kimbrough - Spur Gear 88T - 64DP - #209
CR515 Kimbrough - Spur Gear 76T - 64DP - #199
CRW64072 Diff Spur 64P 72T - For Diff or Spur Adapters
U4112 S/Steel Shims 1/4x5/16"x0.004" - Eclipse
U4855 Diff Washer (pr) - Eclipse
U4861 Diff Rebuild Kit - Eclipse
U4970 Rear Axle - Eclipse
U4971 Diff Spacer Set - Eclipse
U4972 Ride Height Adjusters - 0.00, 0.50, 1.00, 1.50 4prs
U4973 Ride Height Adjusters - 0.25, 0.75, 1.25, 1.75 4prs
U4974 LH Wheel Clamp - Eclipse
U4975 RH Washer Carrier - Eclipse
U4976 Assembled Diff - Eclipse
U7483 Transmission Housing LH - Eclipse 2
U7484 Transmission Housing RH - Eclipse 2

SPEED PACKS

U1548 SPEED PACK - M3 Washers
U1550 SPEED PK-Socket Wrenches-1.5/2.0/2.5/3.0mm
U1552 SPEED PACK - R Clips
U1606 SPEED PACK - Servo Tape - 30pk
U1960 SPEED PACK - O rings; Various
U2128 SPEED PACK - Grub-Set Screws M3 M4
U2356 SPEED PACK - M3x16-30 Csk Screws (pk12)
U2856 SPEED PACK - Sticky Cable Clips (pk10)
U3021 SPEED PACK - M3x6 Csk Allen Hi-T
U3022 SPEED PACK - M3x8 Csk Allen Hi-T
U3023 SPEED PACK - M3x10 Csk Allen Hi-T
U3024 SPEED PACK - M3x12 Csk - M3 x 10 Button Screws
U3131 SPEED PACK - Alloy Spacers M3x7mm 0.5;1;2mm (pk18)
U3572 SPEED PACK - M3x14 Grub Srew pk4
U4155 SPEED PACK - M3 Csk Washers - Black Alloy (pk10)
U4210 SPEED PACK - Pinion Grub Screw Set pk10
U4241 SPEED PACK - M3 Alloy Nyloc Nuts - Black - pk10
U4314 SPEED PACK - Alloy Black M3 Washers - 18pc
U4351 SPEED PACK - Shims 3.2x6x0.1mm (pk8)
U4650 SPEED PACK - M3 Nyloc Nut Steel - Black (pk10)
U4836 SPEED PACK Grub Screw M3 x 8mm Cup Point (10pcs)
U4837 SPEED PACK M2.5x10 Cap Hd (pk8)
U4862 Black Alloy Washers 0.50mm (pk12)
U4983 SPEED PACK Servo Screws - Eclipse (2pcs)
U4984 SPEED PACK - M3 Alloy Nuts - Black - pk10
U4987 SPEED PACK - Needle Roller 1.5x11.8 (pk8)
U7102 SPEED PACK - M3 x 4 Button Hd (pk10)
U7103 SPEED PACK - M3 x 6 Button Hd (pk10)
U7104 SPEED PACK - M3 x 8 Button Hd (pk10)
U7105 SPEED PACK - M3 x 10 Button Hd (pk10)
U7112 SPEED PACK - M3 x 8 Cap Hd (pk10)
U7113 SPEED PACK - M3 x 10 Cap Hd (pk10)
U7122 SPEED PACK - M3 x 12 Csk Hd (pk10)
U7125 SPEED PACK - M3 x 25 Csk Hd (pk10)

SPEED SECRET - OPTION PARTS

CR310 Alloy Csk Hex Screws M3 x 6 pk10
CR311 Alloy Csk Hex Screws M3 x 8 pk10
CR312 Alloy Csk Hex Screws M3 x 10 pk10
CR314 Alloy Button Head Hex Screws M3 x 6 pk10
CR315 Alloy Button Head Hex Screws M3 x 8 pk10
CR316 Alloy Button Head Hex Screws M3 x 10 pk10
CR320 Titanium Csk Hex Screws M3 x 6 pk10
CR321 Titanium Csk Hex Screws M3 x 8 pk10
CR322 Titanium Csk Hex Screws M3 x 10 pk10
CR664 Alloy Motor Spacer - 1mm - pk2
U1905 Titanium Turnbuckle - 35mm - Purple - pr
U1954 Pro - Thrust Bearing
U3582 Precision Balance Pivot Set
U4862 Black Alloy Washers 0.50mm (pk12)
U7007 Aluminium Ball Stud Short - Eclipse - pk5
U7298 Alloy Rear Wheel Screws - Atom/Eclipse (pk6)
U7299 Alloy Chassis - Eclipse (forward pivot option only)
U7315 Titanium Turnbuckle - 35mm - Silver - pr
U7453 40mm Fan Mount Kit - ATOM
U7480 C/F - Camber Strap 1.5° - Eclipse 2
U7482 Alloy Pod Base - Eclipse 2



PINIONS

CR6422	Pinion Gear 64DP 22T (7075 Hard)
CR6423	Pinion Gear 64DP 23T (7075 Hard)
CR6424	Pinion Gear 64DP 24T (7075 Hard)
CR6425	Pinion Gear 64DP 25T (7075 Hard)
CR6426	Pinion Gear 64DP 26T (7075 Hard)
CR6427	Pinion Gear 64DP 27T (7075 Hard)
CR6428	Pinion Gear 64DP 28T (7075 Hard)
CR6429	Pinion Gear 64DP 29T (7075 Hard)
CR6430	Pinion Gear 64DP 30T (7075 Hard)
CR6431	Pinion Gear 64DP 31T (7075 Hard)
CR6432	Pinion Gear 64DP 32T (7075 Hard)
CR6433	Pinion Gear 64DP 33T (7075 Hard)
CR6434	Pinion Gear 64DP 34T (7075 Hard)
CR6435	Pinion Gear 64DP 35T (7075 Hard)
CR6436	Pinion Gear 64DP 36T (7075 Hard)
CR6437	Pinion Gear 64DP 37T (7075 Hard)
CR6438	Pinion Gear 64DP 38T (7075 Hard)
CR6439	Pinion Gear 64DP 39T (7075 Hard)
CR6440	Pinion Gear 64DP 40T (7075 Hard)
CR6441	Pinion Gear 64DP 41T (7075 Hard)
CR6442	Pinion Gear 64DP 42T (7075 Hard)
CR6443	Pinion Gear 64DP 43T (7075 Hard)
CR6444	Pinion Gear 64DP 44T (7075 Hard)
CR6445	Pinion Gear 64DP 45T (7075 Hard)
CR6446	Pinion Gear 64DP 46T (7075 Hard)
U3622	Pinion; Hard Alloy 64dp - 22T
U3623	Pinion; Hard Alloy 64dp - 23T
U3624	Pinion; Hard Alloy 64dp - 24T
U3625	Pinion; Hard Alloy 64dp - 25T
U3626	Pinion; Hard Alloy 64dp - 26T
U3627	Pinion; Hard Alloy 64dp - 27T
U3628	Pinion; Hard Alloy 64dp - 28T
U3629	Pinion; Hard Alloy 64dp - 29T
U3630	Pinion; Hard Alloy 64dp - 30T
U3631	Pinion; Hard Alloy 64dp - 31T
U3632	Pinion; Hard Alloy 64dp - 32T
U3633	Pinion; Hard Alloy 64dp - 33T
U3634	Pinion; Hard Alloy 64dp - 34T
U3635	Pinion; Hard Alloy 64dp - 35T
U3636	Pinion; Hard Alloy 64dp - 36T
U3637	Pinion; Hard Alloy 64dp - 37T
U3638	Pinion; Hard Alloy 64dp - 38T
U3639	Pinion; Hard Alloy 64dp - 39T
U3640	Pinion; Hard Alloy 64dp - 40T
U3641	Pinion; Hard Alloy 64dp - 41T
U3642	Pinion; Hard Alloy 64dp - 42T
U3643	Pinion; Hard Alloy 64dp - 43T
U3644	Pinion; Hard Alloy 64dp - 44T
U3645	Pinion; Hard Alloy 64dp - 45T
U3646	Pinion; Hard Alloy 64dp - 46T

TEAM MERCHANDISE

CR298	CORE RC Hauler Bag
G338	2 Tone Beanie Knitted Hat
G339L	Jacket - 3 Layer Softshell; Black - L 44inch
G339M	Jacket - 3 Layer Softshell; Black - M 41inch
G339S	Jacket - 3 Layer Softshell; Black - S - 38inch
G339XL	Jacket - 3 Layer Softshell; Black - XL 46inch
G339XS	Jacket - 3 Layer Softshell; Black - XS - 34inch
G339XXL	Jacket - 3 Layer Softshell; Black - XXL 48inch
G339XXXXL	Jacket - 3 Layer Softshell; Black - XXXL 50inch
G346L	Schumacher Gilet - Frost Grey - Large
G346M	Schumacher Gilet - Frost Grey - Medium
G346S	Schumacher Gilet - Frost Grey - Small
G346XL	Schumacher Gilet - Frost Grey - X-Large
G346XXL	Schumacher Gilet - Frost Grey - XX-Large
G347L	Schumacher "Arrows" T-Shirt - Large
G347M	Schumacher "Arrows" T-Shirt - Medium
G347S	Schumacher "Arrows" T-Shirt - Small
G347XL	Schumacher "Arrows" T-Shirt - X-Large
G347XS	Schumacher "Arrows" T-Shirt - X-Small
G347XXL	Schumacher "Arrows" T-Shirt - XXL
G347XXS	Schumacher "Arrows" T-Shirt - XX-Small
G347XXXXL	Schumacher "Arrows" T-Shirt - XXXL
G347XXXXXL	Schumacher "Arrows" T-Shirt - XXXXL
G347XXXXXXL	Schumacher "Arrows" T-Shirt - XXXXXL
G347XXXXXXXL	Schumacher "Arrows" T-Shirt - XXXXXXL

TEAM MERCHANDISE Cont....

G348L	Schumacher "Arrows" Hoody - Large
G348M	Schumacher "Arrows" Hoody - Medium
G348S	Schumacher "Arrows" Hoody - Small
G348XL	Schumacher "Arrows" Hoody - XL
G348XS	Schumacher "Arrows" Hoody -XS
G348XXL	Schumacher "Arrows" Hoody - XXL
G348XXXL	Schumacher "Arrows" Hoody - XXXL
G349L	Schumacher "Arrows" Zipped Hoody - Large
G349M	Schumacher "Arrows" Zipped Hoody - Medium
G349S	Schumacher "Arrows" Zipped Hoody - Small
G349XL	Schumacher "Arrows" Zipped Hoody - XL
G349XXL	Schumacher "Arrows" Zipped Hoody - XXL
G350L	Schumacher "Arrows" Polo Shirt-Large
G350M	Schumacher "Arrows" Polo Shirt-Medium
G350S	Schumacher "Arrows" Polo Shirt-Small
G350XL	Schumacher "Arrows" Polo Shirt-XL
G350XXL	Schumacher "Arrows" Polo Shirt-XXL
G350XXXL	Schumacher "Arrows" Polo Shirt-XXXL
G350XXXXL	Schumacher "Arrows" Polo Shirt-XXXXL
G350XXXXXL	Schumacher "Arrows" Polo Shirt-XXXXXL
G355	Schumacher Hauler Bag
G356	Handle for Hauler Bag
G357	Small Drawer for Hauler Bag
G358	Medium Drawer for Hauler Bag
G359	Large Drawer for Hauler Bag
G360	Schumacher Snapback Flatbill Cap-Grey
G361	Schumacher Flexifit Cap S/M - Grey
G362	Schumacher Flexifit Cap L/XL - Grey

ELECTRONICS

CR175	GT12 Power Plant-PACE ESC/SP 13.5/1S Lipo
CR249	Futaba Servo Wires Black
CR250	JR Servo Wires Black
CR251	Freeze Cooling Fan 40 x 40mm
CR665	LiPo Voltage Checker
MR33-CF40	MR33 Cooling Fan 40mm
SK-500015	Corner Weight System
SK-600114-01	DC Power Distributor

SERVO

CR194	CORE RC -5008- Servo 5Kg .08 Sec 12th
KO30126	RSx3-12 Servo
KO30127	RSx3-12 World Spec Version Servo
KO30128	RSx3-12 GT Version Servo
KO30129	RSx3-12 HC Servo
KO92392	RS Set w/RSx3-12
SA107A53811A	SRG-HR Mini Digital Servo

TRANSMITTERS AND RECIEVERS

CR277	CODE 2.4G FHSS Steerwheel Radio TxRx
CR278	CODE 2.4G FHSS - Rx Only
KO21005	KR-211FH 2.4GHz FHSS Receiver
KO21007	KR-413FH Micro Receiver
KO21008	KR-241FH 2.4GHz FHSS
KO21009	KR-415FHD
KO21010	KR-415FHD (Short Antenna)
KO21011	KR-418FH 4 Channels Receiver - 2.4GHz
KO80576	EX-RR w/KR-415FHD
KO80581	EX-RR w/KR-415FHD Double Rx Set
KO80700	Esprit IV - Stick Radio Combo
SA101A31971A	MT-S Radio Set with RX482
SA101A32071A	EXZES ZZ Radio Set with RX472
SA101A32171A	MT-44 Radio Set with RX-482
SA101A32371A	M12S-RS Radio Set with RX482
SA101A32471A	M17 Radio Set with RX491
SA101A32571A	MX-6 Radio Set with RX-391W
SA107A40843A	RX-371FS FHSS-2 Receiver
SA107A40973A	RX-451R Receiver
SA107A41044A	RX-461 Receiver for MT-4
SA107A41074A	RX-380 FHSS-3 Receiver
SA107A41111A	RX-471 Receiver
SA107A41117A	RX-472 Telemetry/SSL Receiver
SA107A41131A	RX-471WP FH4 Waterproof Receiver
SA107A41144A	RX-371WP FHSS-2 Waterproof Receiver
SA107A41151A	RX-471 Dual ID Receiver
SA107A41251A	RX-481 Receiver
SA107A41257A	RX-482 Telemetry/SSL Receiver
SA107A41341A	RX-391W Receiver
SA107A41353A	RX-491 Receiver

PAINT

CR599	Spraygun Pro for Core paint
CR600	Aerosol Paint - White Knight
CR601	Aerosol Paint - Yellow Taxi
CR602	Aerosol Paint - Fire Red
CR603	Aerosol Paint - French Blue
CR604	Aerosol Paint - Petrol Blue
CR605	Aerosol Paint - Racing Green
CR606	Aerosol Paint - Jet Black
CR607	Aerosol Paint - Lime Green
CR608	Aerosol Paint - Tangerine
CR609	Aerosol Paint - Hot Pink
CR610	Aerosol Paint - Berry Purple
CR611	Aerosol Paint - Neon Yellow
CR612	Aerosol Paint - Neon Orange
CR613	Aerosol Paint - Neon Red
CR614	Aerosol Paint - Neon Green
CR615	Aerosol Paint - Neon Fire
CR616	Aerosol Paint - Neon Carrot
CR617	Aerosol Paint - Neon Pink
CR618	Aerosol Paint - Neon Blue
CR619	Aerosol Paint - Metallic Blue
CR620	Aerosol Paint - Metallic Graphite
CR621	Aerosol Paint - Metallic Silver
CR622	Aerosol Paint - Metallic Purple
CR623	Aerosol Paint - Metallic Green
CR624	Aerosol Paint - Metallic Red
CR625	Aerosol Paint - Metallic White
CR626	Aerosol Paint - Clear Sparkle
CR627	Aerosol Paint - True Chrome
CR628	Aerosol Paint - Clear Backing
CR629	Aerosol Paint - Window Tint
CR631	Aerosol Paint - Spearmint
HN20000	Airbrush Bottle Adapter for 60ml/120ml
HN20020	Airbrush Color SP Reducer/Cleaner 60ml
HN20021	Airbrush Color SP Reducer/Cleaner 120ml
HN20030	Airbrush Color Intercoat-Clear 60ml
HN20031	Airbrush Color Intercoat-Clear 120ml
HN21000	Airbrush Color Chrome 60ml
HN22000	Airbrush Color Solid White 60ml
HN22001	Airbrush Color Solid White 120ml
HN22020	Airbrush Color Solid Grey 60ml
HN22030	Airbrush Color Solid Black 60ml
HN22031	Airbrush Color Solid Black 120ml
HN22040	Airbrush Color Solid Yellow 60ml
HN22050	Airbrush Color Solid Orange 60ml
HN22060	Airbrush Color Solid Red 60ml
HN22080	Airbrush Color Solid Aqua Blue 60ml
HN22090	Airbrush Color Solid Sky Blue 60ml
HN22100	Airbrush Color Solid Blue 60ml
HN22110	Airbrush Color Solid Green 60ml
HN22130	Airbrush Color Solid Brown 60ml
HN23000	Airbrush Color Transparent Yellow 60ml
HN23010	Airbrush Color Transparent Orange 60ml
HN23020	Airbrush Color Transparent Pink 60ml
HN23030	Airbrush Color Transparent Red 60ml
HN23040	Airbrush Color Transparent Purple 60ml
HN23050	Airbrush Color Transparent Blue 60ml
HN23060	Airbrush Color Transparent Green 60ml
HN23070	Airbrush Color Transparent Grey Tint 60ml
HN24000	Airbrush Color Pearl White 60ml
HN24010	Airbrush Color Pearl Silver 60ml
HN24020	Airbrush Color Pearl Gold 60ml
HN24030	Airbrush Color Pearl Orange 60ml
HN24050	Airbrush Color Pearl Red 60ml
HN24060	Airbrush Color Pearl Copper 60ml
HN24070	Airbrush Color Pearl Blue 60ml
HN24080	Airbrush Color Pearl Key-Lime Green 60ml
HN24090	Airbrush Color Pearl Green 60ml
HN24100	Airbrush Color Pearl Charcoal Grey 60ml
HN24110	Airbrush Color Pearl Black 60ml
HN25000	Airbrush Color Neon Yellow 60ml
HN25010	Airbrush Color Neon Flame Orange 60ml
HN25020	Airbrush Color Neon Orange 60ml
HN25030	Airbrush Color Neon Pink 60ml
HN25040	Airbrush Color Neon Razberry 60ml
HN25050	Airbrush Color Neon Red 60ml
HN25060	Airbrush Color Neon Purple 60ml
HN25070	Airbrush Color Neon Blue 60ml
HN25080	Airbrush Color Neon Green 60ml
HN26000	Airbrush Color Iridescent Yellow 60ml
HN26010	Airbrush Color Iridescent Candy Red 60ml
HN26020	Airbrush Color Iridescent Red 60ml
HN26030	Airbrush Color Iridescent Purple 60ml
HN26050	Airbrush Color Iridescent Teal Green 60ml
HN26060	Airbrush Color Iridescent Turquoise 60ml

BRUSHLESS ACCESSORIES

CR134	Core Sensor Lead; 180mm
CR254	150mm Flat Bonded Flex Sensor Wire
CR651	150mm Super Flex 26GA Silicone sensor Wire
CR652	125mm Super Flex 26GA Silicone Sensor Wire
HW2361200	XERUN-Sensor Cable-120mm
LRP819315	Sensor Wire Highflex 150mm
MR33-CF30	MR33 Cooling Fan 30mm

BRUSHLESS SPEEDCONTROLS

CR173	PACE 45R Brushless ESC 1s/2s
CR174	PACE 45R/60R Programming Card
CR199	PACE 60R Brushless ESC 1S/2S
HW30112121051	XERUN-V3.1-1S-BL-ESC-120A-Black
HW30112603	XERUN - XR10 - Pro - 1S - 120A - ESC
HW30112751	XERUN - XR10 - Pro - Stock Spec - 1S - V4 - Black
SK-300048	Toro 120A 1S BL Sensor ESC

BATTERIES

AM700301	AM Lipo 6200mAh 1s 3.7V - 65/130C
AM700302	AM Lipo 8000mAh 1s 3.7V - 55/110C
CR007	CORE RC Silicone Wire 12g - Red/Black 2x50cm
CR009	CORE RC RED Connector with 2x4mm Males
CR050	CORE RC Silicone Wire 12AWG - Red 1 Metre
CR051	CORE RC Silicone Wire 12AWG - Black 1 Metre
CR052	CORE RC Silicone Wire 12AWG - Blue 1 Metre
CR115	CORE RC Silicone Wire 12g - Red/Black/Blue 3x50cm
CR279	1S Lipo 8000mAh 100C Pro Series - 3.7V
CR287	Silicone Wire Black 14 AWG - 1Mtr
CR288	Silicone Wire Black 16 AWG - 1Mtr
CR292	CORE RC-3200mAh 3.7V 30/60C 1S Lipo
CR653	Core RC Silicone Wire 13AWG- Black-1 Mtr
DA771003	DASH 12AWG Wire Black
DA771004	DASH 13AWG Wire Black
DA771005	DASH 14AWG Wire Black
FAN26187	Fantom 1s 7800mAh lipo - 4mm
FAN26187-5	Fantom 1S 7800mAh Lipo - 5mm
IPCC1S7000HV3	LiHV Battery 7000mAh-120C-1s 3.8V
IPCC1S8200HV3	LiHV Battery 8200mAh-120C-1s 3.8V
LRP430268	Lipo 8000mAh - P4 1/12 Ultra LCG - 3.7V
LRP430270	Lipo 6200mAh - P4 1/12 Ultra LCG Stock Spec - 3.7V
MR-SB	MR33 Lipo Bag

GENERAL ACCESSORIES

CR005	CORE RC Battery Tape - Black 50m
CR006	CORE RC Battery Tape - Blue 50m
CR037	CORE RC - Battery Tape - Purple 50m
CR043	CORE RC - Silver X-Weights 16pcs
CR058	CORE RC - Black X-Weights 16pcs
CR060	Small Body Clip 1/10 - Gloss Black (8)
CR061	Small Body Clip 1/10 - Silver (8)
CR062	Small Body Clip 1/10 - Gold (8)
CR063	Small Body Clip 1/10 - Fluorescent Yellow (8)
CR064	Small Body Clip 1/10 - Fluorescent Green (8)
CR065	Small Body Clip 1/10 - Fluorescent Red (8)
CR066	Small Body Clip 1/10 - Metallic Green (8)
CR067	Small Body Clip 1/10 - Metallic Red (8)
CR068	Small Body Clip 1/10 - Metallic Blue (8)
CR069	Small Body Clip 1/10 - Metallic Purple (8)
CR159	Core RC - Battery Tape - Orange 50m
CR197	CORE RC - Glass Setup Board
CR297	CORE RC - Neoprene Bag
CR518	Super Glue Nozzles - pk10
CR519	Under LiPo Weight 35g brass 1S/Shorty
CR522	CORE RC - 522 Pro Tyre Glue + 2 Nozzles
CR548	CORE RC - Tool Bag
CR549	CORE RC - Oil Bag
CR663	Slim Battery Tape - Black - 12mm x 25M
G353	Schumacher Glass Setup Board
G354	Schumacher - Neoprene Bag
J003	Contact RC - Glass Setup Board
J004	Contact RC - Neoprene Bag
J005	Contact LMP12 Rear Wheel Centre Finder pr
LRP65221	ZIP Plus 3 Superglue
U4831	Aerial Tube Cap - Black - 6pk

1/12 Foams; Circuit

JT2-30FB	GT12-1/12 Front Bomber Gold Foam 44mm
JT2-30FJ	GT12-1/12 Front Pink 30Sh J Foam - 44mm
JT2-30RB	1/12 Rear Bomber Gold - 46mm
JT2-30RJ	1/12 Rear Pink 30Sh J Foam - 46mm
JT2-30RT	1/12 Rear 30Sh T Foam - 46mm
JT2-32FJ	GT12-1/12 Front Magenta 32Sh J Foam
JT2-32RJ	1/12 Rear Magenta 32Sh J Foam
JT2-35FJ	GT12-1/12 Front Double Pink 35Sh J Foam
JT2-35FT	GT12-1/12 Front T Foam 35Sh - 44mm
JT2-35RT	1/12 Rear 35Sh T Foam - 46mm
JT2-40FT	GT12-1/12 Front T Foam 40Sh - 44mm
JT28RA	Foam Tyres - 1/12 Rear SOFT PINK 28Sh
JT30FA	Foam Tyres - 1/12 Front PINK 30Sh
JT30RA	Foam Tyres - 1/12 Rear PINK 30Sh
JT32FA	Foam Tyres - 1/12 Front MAGENTA 32Sh
JT32RA	Foam Tyres - 1/12 Rear MAGENTA 32Sh
JT35FA	Foam Tyres - 1/12 Front DOUBLE PINK 35Sh
JTCF	1/12 Front 32Sh Control Tyre 44mm
JTCR	1/12 Rear 30Sh Control Tyre 46mm
U4828	Tyre Truer Rear Wheel Insert - Atom

BRUSHLESS MOTORS

DA740065	R-Tune 540 Sensored BL Motor 6.5T
DA740135	R-Tune 540 Sensored BL Motor 13.5T
DA740175	R-Tune 540 Sensored BL Motor 17.5T
DA741135	540 Sensored BL Motor 13.5T for AM Cup
FAN19411S	Fantom Motor 13.5T v3R Pro Spec
FAN19412S	Fantom Motor 13.5T v3T Pro Spec
FAN19413S	Fantom Motor 17.5T v3R Pro Spec
FAN19414S	Fantom Motor 17.5T v3T Pro Spec
FAN19456E	Fantom Motor 6.5T - FR-1 Euro - V2
HW30401103	XERUN-V10-13.5T-Black-G3-BL-Motor
HW30401104	XERUN-V10-17.5T-Black-G3-BL-Motor
HW30401106	XERUN-V10-3.5T-Black-G3-BL-Motor
HW30401109	XERUN-V10-6.5T-Black-G3-BL-Motor
HW30401112	XERUN-V10-10.5T-Black-G3-BL-Motor
HW30404310	QUICRUN - 3650 - G2 - Motor - 13.5T
HW30408005	XERUN - Justock - G2 - Motor - 13.5T -Fixed Timing
HW30408010	XERUN Justock G2.1 Motor 13.5T Fixed Timing
HW90040120	XERUN - 1/10 - Sensored - BL - Motor - 13.5T
LRP520006	X22 Modified Motor 6.5T
NR920003	Nosram N22 Modified Motor - 6.5T
SK-400003-34	ARES Pro BL Motor 13.5T Spec
SP000038	1/10 Competition MMM Series 13.5R BL Motor
SP138135V3	Speed Passion V3.0 Comp BL Motor; 13.5T

TYRE ADDITIVE

C6400	CS High Grip Additive
C6460	CS Speed Grip Carpet
LRP65011	Top Grip Carpet 2
LRP65012	Top Grip Carpet 3 Tyre Traction
MR33-0002	MR33 No 1 Black Indoor/Outdoor Tyre Additive
NR96010	NOSRAM Traction additive carpet
SXT00030	SXT 3.0 Traction Compound

TOOLS

CR044	CORE RC - Curved Body Scissors
CR045	CORE RC - Straight Body Scissors
CR102	Magnetic Parts Tray - Purple
CR103	Magnetic Parts Tray - Black
CR148	CORE RC - Polybutler Pit Box; Black
CR248	Hobby Bench Vice
CR271	4 Way Wrench Small - 4.0,4.5,5.5,7.0mm
U2789	Schumacher Hex Driver - 1.5mm
U2790	Schumacher Hex Driver - 2.0mm
U2791	Schumacher Hex Driver - 2.5mm
U2792	Schumacher Hex Driver - 3.0mm
U2795	Schumacher M3 Nut Driver
U2818	Schumacher Body Reamer
U4229	Steel Spanner - 5.5mm/3.9mm

CHARGERS

AM701000	AM Auto Balance Charger&Discharger
CR031	Charger Connector Set - 8pcs (10Amps max)
CR161	UAC50 Charger 12v/110-240v 6A
ISQ6PLUS-B	Q6 + Smart Charger - Black
SK-100064	T6755 Charger 7A 55W AC/DC Touch Screen
SK-100084	Imax B6 Mini Charger 6A 60W DC
SK-100104	Q200 Quattro Charger
SK-100106	S60 AC Charger 60W 6A
SK-100122	e450 Charger 50W - 4A -AC
SK-100123	D400 Charger
SK-100124	PC1080 Dual Charger
SK-100129	Ultimate Duo D250 Charger
SK-100130	E660 Charger AC/DC 60W 6A
SK-100131	D100 v2 AC/DC Dual Balance Charger
SK-100134	B6 nano Charger
SK-200013-01	eFuel 30A 540W Power Supply
SK-200015	eFuel 50A 1200W Power Supply
SK-200017-01	SKY RC 17A Power Supply (UK Plug)

G355 - Schumacher Hauler Bag

The Schumacher hauler bag sets a new standard of transporting all your race gear to the track. Super stylish black, grey and white provides a distinctive look but carries that traditional Schumacher branding!

The bag is super easy to manoeuvre with it's 2 position, push button, lightweight aluminium handle and robust moulded wheels. The bag also incorporates a shoulder strap for more carrying options. The handle is also replaceable if somehow it gets damaged. The zips on the Schumacher hauler are also super tough, with upgraded fastenings compared to other bags on the market.

Undo the main zips to unveil the 5 tough corrugated boxes, one large, three medium and one small, (all available separately as spare parts) with moulded supports to provide even more strength.

Underneath the top zipped cover you can find a handy tool tray and positions for all your favourite tools which can be securely fastened in with the elastic straps.

The bag also has handy pockets for many items including one large on the rear to take that all important set up board.

Dimensions

54 x 37 x 60cm

Not including handle.

Box sizes;

1x Large - 32x19.5x50cm

3x Medium - 32x24.5x12cm

1x Small - 32x21.5x12cm

The Schumacher Hauler bag requires assembly.

Schumacher Set up board and tools not included.

Spare Parts

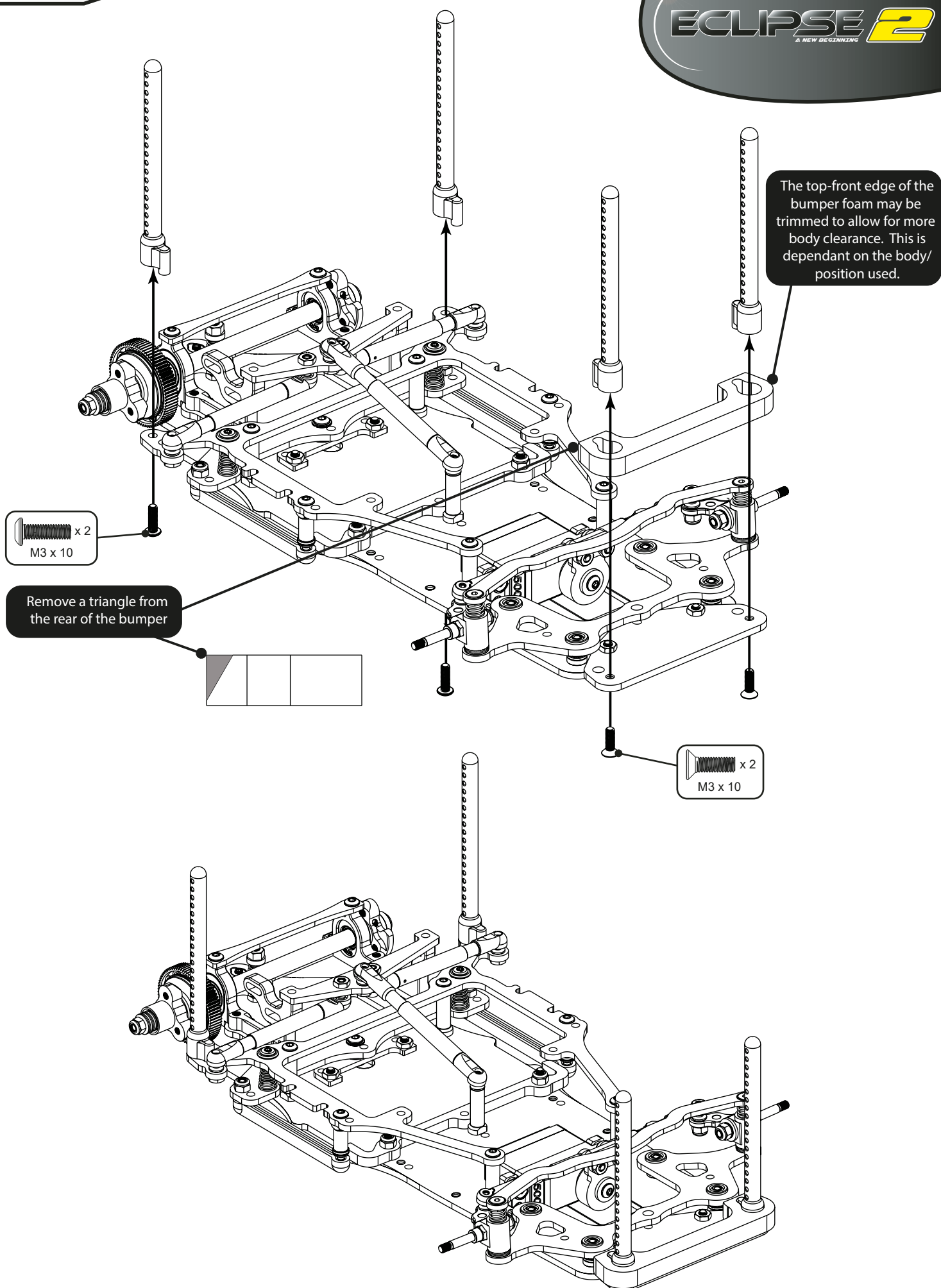
G356 - Handle For Hauler Bag

G357 - Small Draw for Hauler Bag

G358 - Medium Draw for Hauler Bag

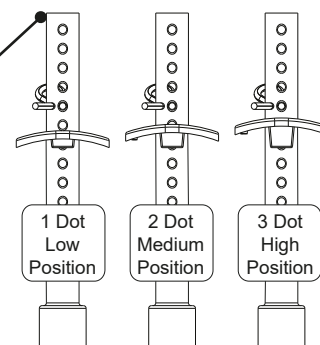
G359 - Large Draw for Hauler Bag





The bodyposts may be trimmed down for looks and aerodynamics. A sharp knife or side cutters may be used. Alternatively use: AM190041 - Arrowmax - Body Post Trimmer

Body Washers
Select the correct body washer to fine tune the bodyshell height. Each incremental change is 1.2mm.

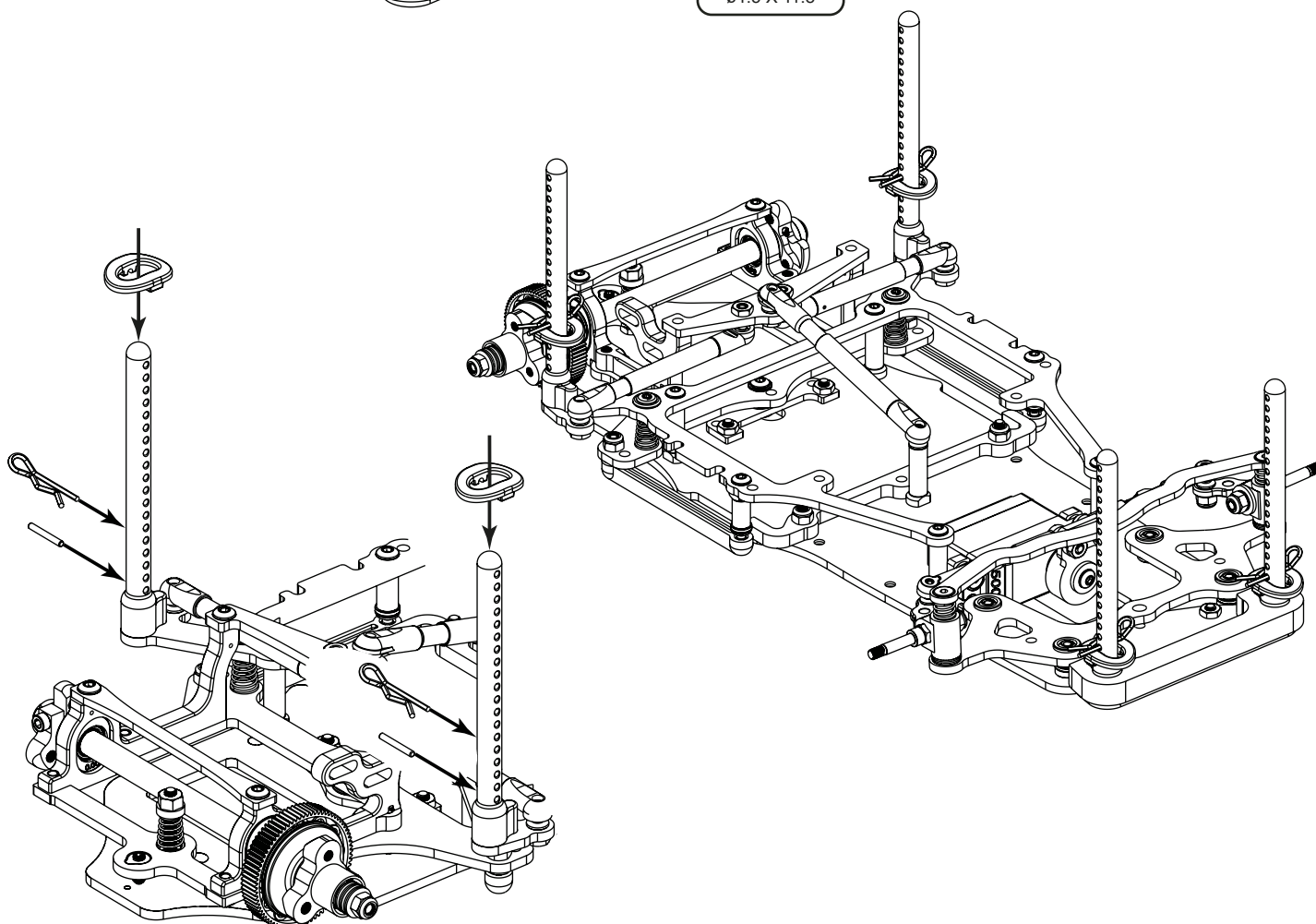


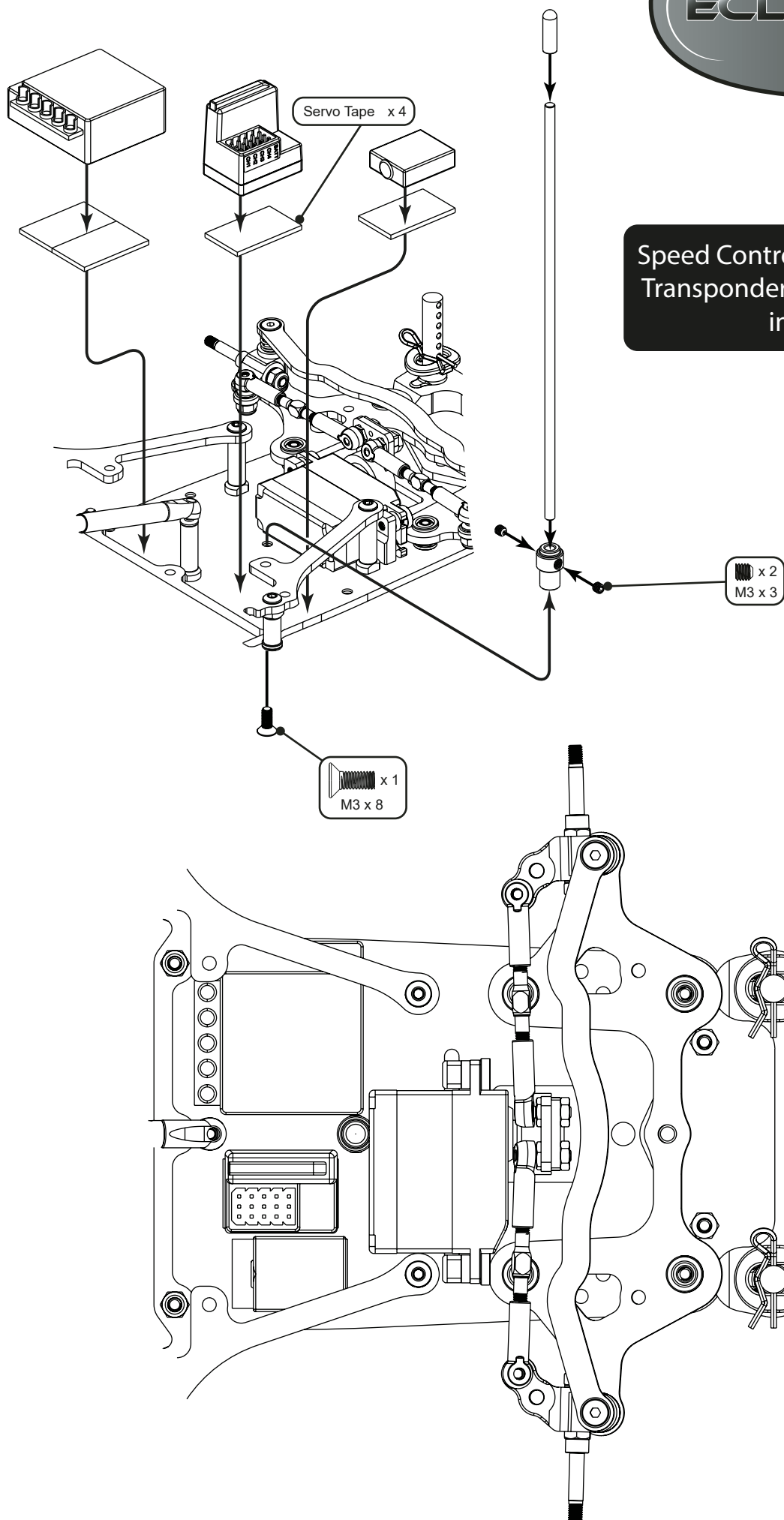
Snap the body washers onto the pins.

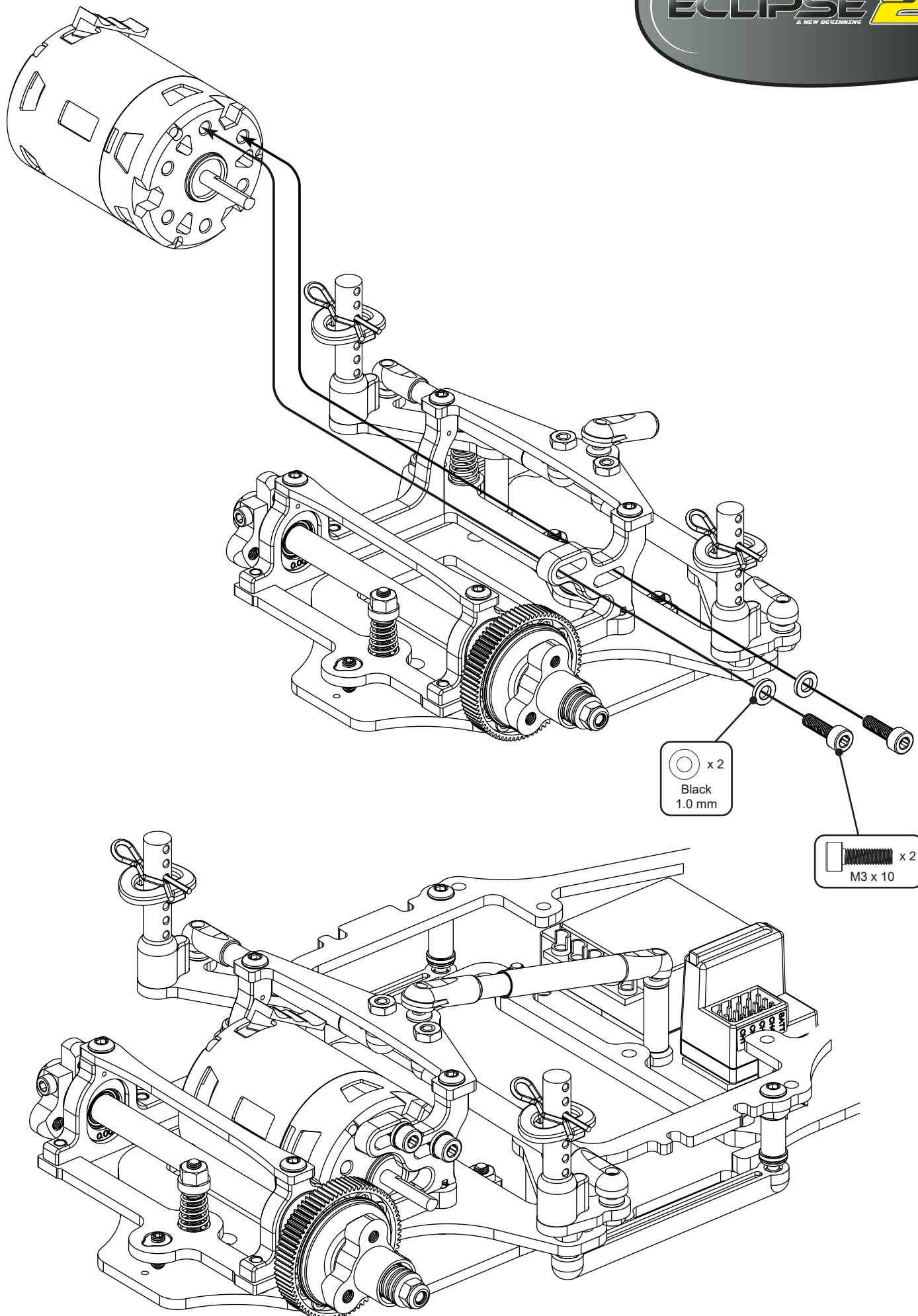
Attach Bodyclips on after the body washers.

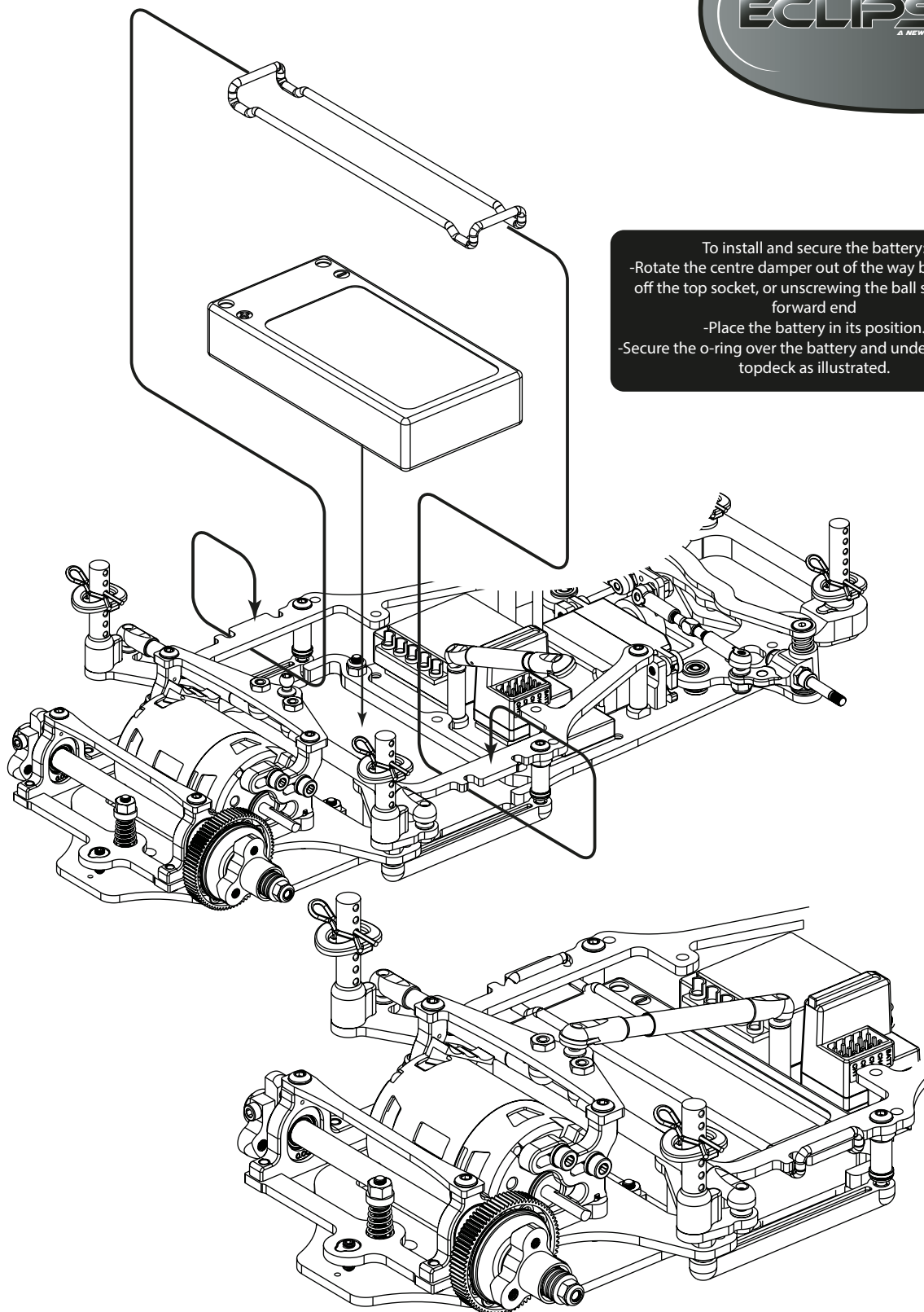
Press the pins centrally into the post.

x 4
ø1.5 X 11.8





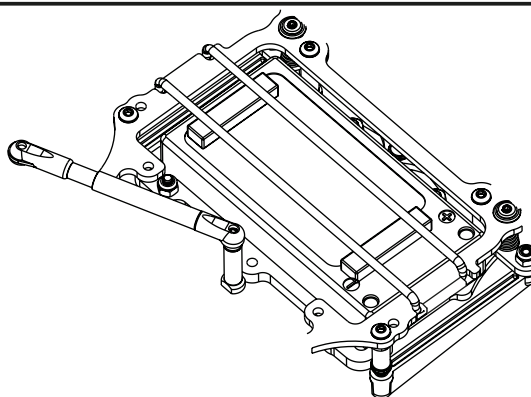


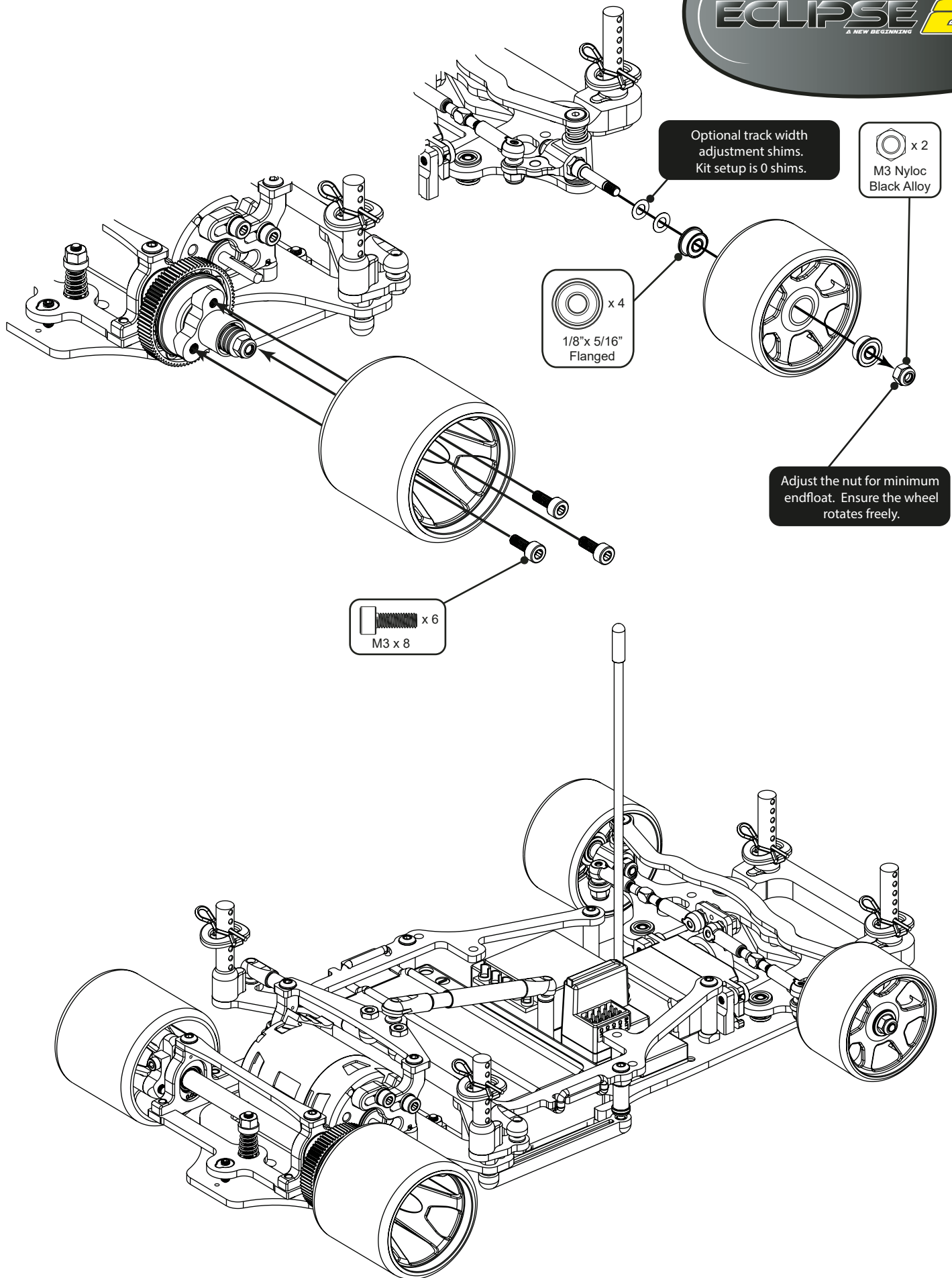


To install and secure the battery:

- Rotate the centre damper out of the way by popping off the top socket, or unscrewing the ball stud at the forward end
- Place the battery in its position.
- Secure the o-ring over the battery and under the carbon topdeck as illustrated.

As an alternative to mounting the o-ring under the carbon topdeck, you can attach 5mm thick foam to the top of the battery and stretch the o-ring over the top of the topdeck as illustrated.

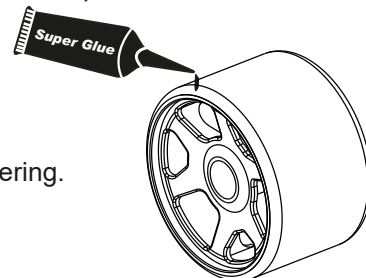
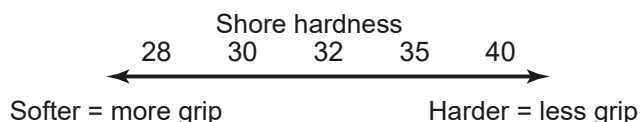




We recommend you start by building your Eclipse 2 to the specification shown in this instruction manual. Then there are many adjustments you can make to tune your car to your track and driving style.

Tyres

The most important factor is to get the tyres right. Contact foam tyres are designed for use on carpet tracks.



Use softer front tyres if you want more steering, and harder front tyres if you want less steering.

In high traction conditions sometimes you can have too much overall grip.

Using harder tyres all round should make you faster through the corners with less traction rolling in these conditions.

If the track grip is not high enough, or the tyres are too hard, the car may slide and stop in the corners, if this is the case, reduce the shore rating until the track condition changes.

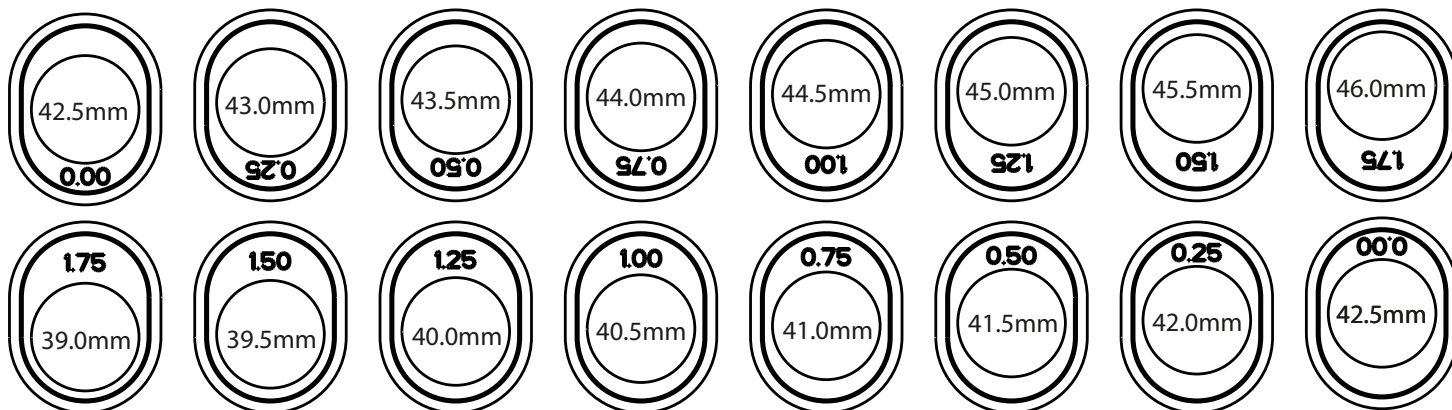
RACERS TIPS

- 43mm Rear, 41.5mm Front is a good all around tyre size, reducing this size is only an advantage in extreme conditions to prevent grip roll.

- If you have too much steering then add a thin layer of superglue (**CR522 or MR-Superglue**) to the outside edge of the front tyre to reduce the front tyre grip. This can be used to prevent grip roll in extreme conditions.

Rear Ride Height

Using these Eccentrics for the foam diameter stated will give the kit rear ride height setting of approximately 3.5mm.



Gear Ratio's

First work out the gear ratio from the spur gear and pinion (For example $76/40 = 1.9$).

Then complete the following equation.

$$\frac{43 \text{ (tyre dia)} \times \pi (3.142)}{1.9 \text{ (gear ratio)}} = 71.1 \text{ mm/rev}$$

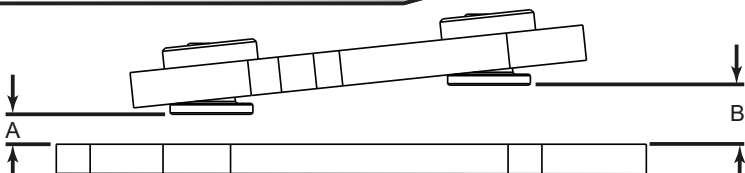
In this chart we have given the mm/rev figures for our suggested tyre size 43mm, for a range of spurs and pinions.

64DP GEARS

	19T	20T	21T	22T	23T	24T	25T	26T	27T	28T	29T	30T	31T	32T	33T	34T	35T	36T	37T	38T	39T	40T	41T	42T	43T	44T	45T	46T	47T	48T	49T	50T	51T	52T	53T	54T
72T																	65.67	67.54	69.42	71.3	73.17	75.05	76.93	78.8	80.68	82.55	84.43	86.31	88.18	90.06	91.94	93.81	95.69	97.56	99.44	101.32
76T													55.1	56.88	58.66	60.43	62.21	63.99	65.77	67.54	69.32	71.1	72.88	74.65	76.43	78.21	79.99	81.76	83.54	85.32	87.1	88.87				
78T												50.23	51.96	53.69	55.42	57.15	58.88	60.62	62.35	64.08	65.81	67.54	69.28	71.01	72.74	74.47	76.2	77.94	79.67	81.4	83.13					
88T	29.17	30.7	32.24	33.77	35.31	36.84	38.38	39.91	41.45	42.98	44.52	46.05	47.59	49.12	50.66	52.19	53.73	55.26	56.8	58.33																

Minimum Combined Tooth Sum 107T - Maximum Combined Tooth Sum 126T

Front Ride Height and Caster



Tire Size (mm)	Ride Height (mm)	Caster	Spacer A (mm)	Spacer B (mm)
39.5	3.0	3°	0.0	2.0
41.5	3.0	3°	1.0	3.0
43.5	3.0	3°	2.0	4.0
39.5	3.0	4°	0.0	2.5
41.5	3.0	4°	1.0	3.5
43.5	3.0	4°	2.0	4.5
39.5	3.0	5°	0.0	3.0
41.5	3.0	5°	1.0	4.0
43.5	3.0	5°	2.0	5.0

Note: The ride height shown assumes 3x silver kingpin spacers below the hubs. Fine ride height adjustment can be achieved by changing the king pin shims. Gold, Silver and Black front springs may affect ride height slightly.

Ride Height and Caster Adjustment

Dimensions A and B seen in the diagram offer simple adjustment of both ride height and caster.

-0.5mm difference between A and B changes caster by 1°.

-Increasing both A and B by the same amount decreases Ride Height.

-Decreasing both A and B by the same amount increases Ride height.

- More caster gives more steering with a slightly harder to drive car.

- Less caster gives less steering, an easier to drive car, and can help when traction roll is an issue.

Camber

Increasing the negative camber angle will increase the cars steering. This will make the car more difficult to drive but often faster on a lap.

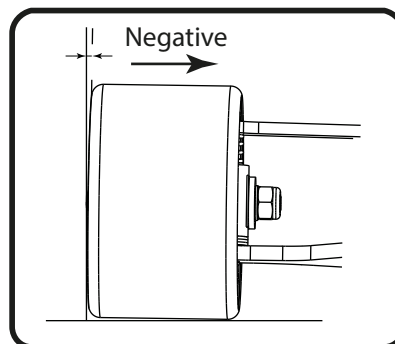
Reducing the negative camber angle is a good setting change if traction roll is a problem.

As a general rule, setting the camber so that the tyres wear without any coning will give the most ideal setting in usual conditions.

Camber is changed using the camber straps.

U7479- Kit camber strap (0.75°)

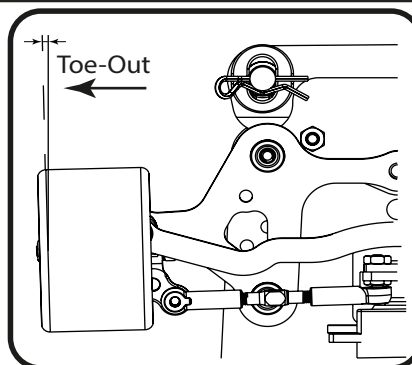
U7480- Speed secret camber strap (1.5°)



Front Toe

Parallel front wheels or a slight Toe-out (up to 1degree per side) is our suggested setting range.

Toe-out gives more initial steering. It does however make the car more difficult to drive on the straight, due to the increased responsiveness.



Centre Pivot Length

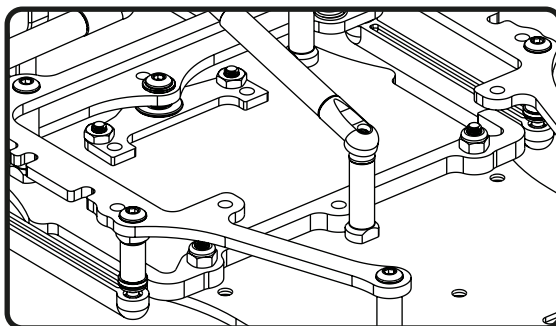
This is adjusted with the 2 hole options in the centre pivot mount and the 2 hole options for mounting the sidelinks to the topdeck and pod plate.

-Front Holes = Short Pivot.

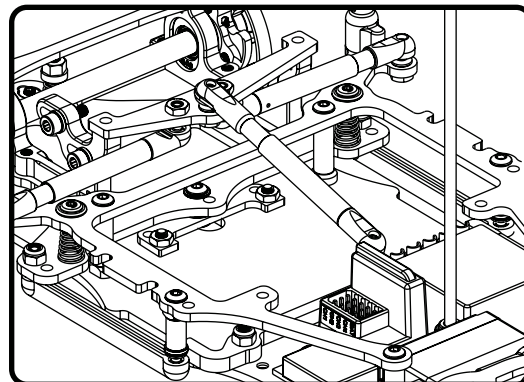
This makes the car rotate better in the corners with slightly less stability.

-Rear Holes = Long Pivot.

This makes the car smoother to drive with slightly less steering.

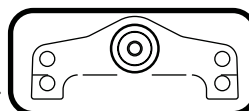


Long Pivot Option



Short Pivot Option

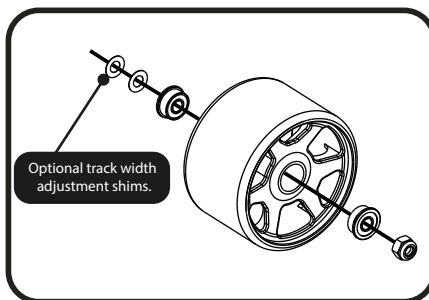
Please note: To use the long pivot option with the lipo fully rearward, the pivot mount needs to be modified at the front, for lipo clearance. An alternative is to use the Eclipse 1 pivot mount for this position, when wanting to use lipo rearward with long pivot.



Track Width

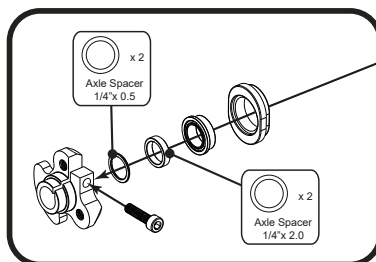
Front

- Wider front track width will make the car easier to drive, provide less steering and give a slower response.
- Narrower front track width will make the car harder to drive, provide more steering and give a faster response.



Rear

- Wider rear track width provides increased rear grip and an easier to drive car.
- Narrower rear track width increases corner speed, steering and is harder to drive.



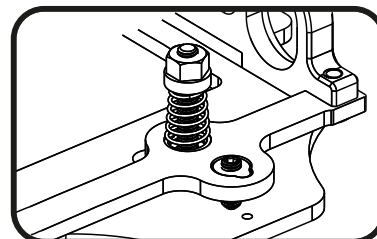
Kit rear width has a 2mm and a 0.5mm spacer on either side. Adjust this spacing to suit. (Keep equal on both sides!)

Rear Centre Spring

This spring is used to set the pod angle.

Adjust the spring tension so that the pod is horizontal when the car is on a flat surface. This gives the kit setting with zero anti-squat or pro-squat.

- A harder rear spring can give more initial steering.
- A softer rear spring will give more aggressive mid corner steering and improve the cars bump handling ability.



Anti-Squat

If the rear centre spring is screwed down further, the pod will no longer be horizontal. Angled down at the rear is Anti-squat. If the spring is unscrewed from horizontal, the pod will be angled forwards. This is Pro-squat.

Anti-squat resists the weight transfer to the rear under power. This will increase on power steering. Typically anti-squat may be used but pro-squat is rarely useful.

Rear Droop

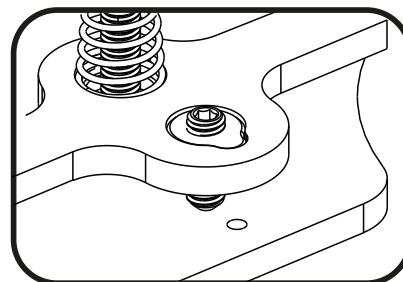
Rear droop adjusts the balance of the cars handling. Less droop makes the car more aggressive, squaring up the turns. More droop gives less corner rotation but an easier to drive car. More droop also improves the cars bump handling.

Start with 1mm of droop.

To set this start with the droop screw backed out and screw in to reduce droop.

Measure this by measuring the cars rear ride height, then take all the weight off the car by lifting from the rear of the top damper tube. (The wheels must still just be touching the floor)

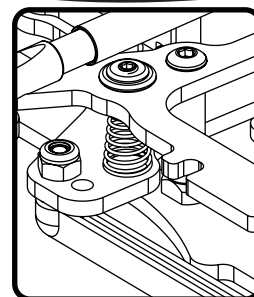
Measure the chassis from the floor in this position and subtract the ride height to calculate the droop.



Roll Springs

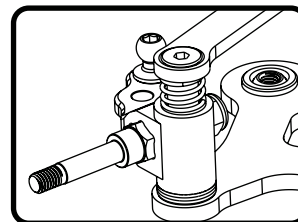
Roll springs are used to control the cars steering balance. A softer spring will give an easier to drive car. Stiffer roll springs can be used to give a more aggressive steering car. The standard setting has the roll springs not compressed and both just touching the lower pod plate when the car is stationary. Screwing these downward and compressing the springs creates more steering while loosening them gives an easier to drive car.

Adjusting these screws allow tweak settings to be finely adjusted. Ensure they are not too unevenly set. If more than 0.5mm different further investigation is required.



Front Springs

Softer springs will ride the bumps better and generally allow the car to roll more which increases traction. Harder springs make the car more responsive and are more suitable for high grip tracks.

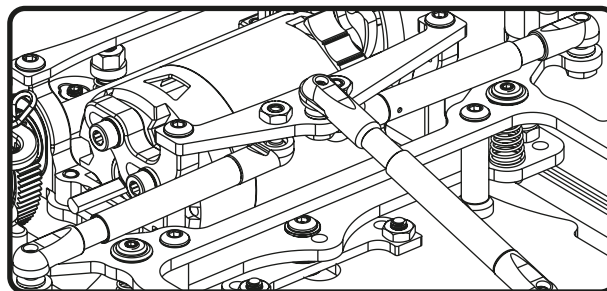


Rear Roll Damping

Generally in high traction track conditions, thinner roll damping oil is better. Low traction tracks may require thicker damping.

Thicker roll damping oil slows the weight transfer of the rear and makes the car easier to drive. Thicker oil can help if the track surface is bumpy and there are issues with bumps in the middle of the corner.

A good range is between 7000cst and 20,000cst.

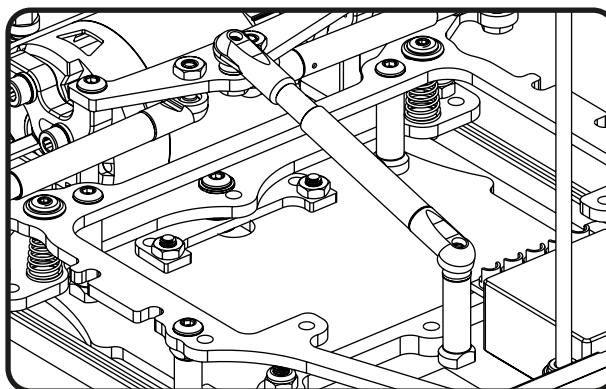


Rear Bump Damping

Generally in high traction track conditions, thinner bump damping oil is better. Low traction tracks may require thicker damping.

Thicker bump damping oil slows the weight transfer of the rear and makes the car easier to drive when coming off power. Thicker oil can help if the track surface is bumpy and there are issues with bumps when the car is moving in a straight line.

A good range is between 15,000cst -50,000cst.

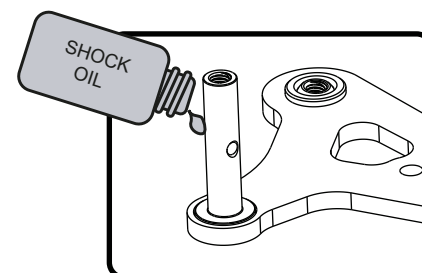


Front Damping

Front damping can be used to tune the car depending on the track traction levels also. Like rear damping, in high traction track conditions, thinner oil is required, compared to low traction track conditions, where thicker oil can improve the cars drivability.

Thicker oil on the kingpin generally always gives a less responsive, easier to drive car. Too thick oil on the kingpin may lead to a 'lazy' feeling car which lacks corner speed.

We suggest a wide range of possibilities here starting from 12,000cst - 40,000cst.





U7298 - Alloy Rear Wheel Screws - Atom/Eclipse (pk6)



CR513 - Kimbrough - Spur Gear 78T - 64DP

CR514 - Kimbrough - Spur Gear 88T - 64DP

CRW64072 - Core RC - Diff Spur 64DP 72T

CR509 - Kimbrough - Thin 88T - 64Dp- # 709



U3582 - Precision Balance Pivot Set



U4314 - SPEED PACK - Alloy Black M3 Washers - (18pc)



U7480 - C/F - Camber Strap 1.5° - Eclipse 2



U1954 - Pro - Thrust Bearing



U4979 - Ceramic Bearing 1/4 x 3/8 x 1/8 Flanged - (pr)



CR664 - Alloy Motor Spacer - 1mm - pk2



U4811 - 1/8 Silicone Nitride Ball - (pk12)



U7453 - 40mm Fan Mount Kit - ATOM



U7315 - Titanium Turnbuckle - 35mm - Silver - pr



U7299 - Alloy Chassis - Eclipse
(Long Pivot Option Only)



U7482 - Alloy Pod Base - Eclipse 2



U4812 - Ceramic Bearing 1/8x5/16x9/64 Flanged (pr)



CR251 - Freeze Cooling Fan 40 x 40mm



Titanium and Alloy Button Head Screws

CR314 - Alloy Button Head Hex Screws M3 x 6 (pk10)

CR315 - Alloy Button Head Hex Screws M3 x 8 (pk10)

CR316 - Alloy Button Head Hex Screws M3 x 10 (pk10)

CR327 - Titanium Button Head Hex Screws M3 x 6 (pk10)

CR328 - Titanium Button Head Hex Screws M3 x 8 (pk10)

CR329 - Titanium Button Head Hex Screws M3 x 10 (pk10)



Titanium and Alloy Csk Screws

CR310 - Alloy Csk Hex Screws M3 x 6 (pk10)

CR311 - Alloy Csk Hex Screws M3 x 8 (pk10)

CR312 - Alloy Csk Hex Screws M3 x 10 (pk10)

CR320 - Titanium Csk Hex Screws M3 x 6 (pk10)

CR321 - Titanium Csk Hex Screws M3 x 8 (pk10)

CR322 - Titanium Csk Hex Screws M3 x 10 (pk10)