

Name: CHRIS H. Date: 01/04 Event: SLCC
 City: _____ State: UK Track: ALDBERSHOT

Track Conditions: Indoor Tight Asphalt Scaled Low Bite
 Outdoor Open Concrete Smooth Med Bite
 Carpet Rough High Bite

Front Suspension

Toe: +1°
 Ride Height: 5.5 mm
 Camber: -1°
 Kick/Anti-Dive: NONE
 Caster: 4°
 Droop: 4 mm
 Front Pivot: 0° 1° 2°
 Roll Center: LOW +1.35 mm
 Arm Spacing: _____
 Shock Position: 2
 Steering Rack: _____
 Spindle Ackerman: _____
 Camber Link: _____
 Camber Ball Stud: _____
 Sway Bar: NONE

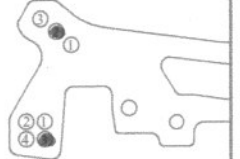
Up Travel: _____
 Arm Length: Short Long
Front Drivetrain
 Front Drive: Spool One-way Diff
 Grease Type: _____
 Pulley: 41 42
 Diff Height: High Low
 Drive Axle: _____
 Hex Width: .165 stk. .195 .225

Shocks

Oil: 40 WT
 Oil Brand: LOSI
 Piston: 54
 Spring: 25 LB
 Bladder: STD
 Above Bladder: 2 x O RINGS

"JR" Link

High Low



— # of Washers Under Ball Stud
 — Size Of Washer
 — Type of Ball Stud

Steering Rack

— # of Washers Under Ball Stud
 — Size Of Washer
 — Type of Ball Stud

Spindle

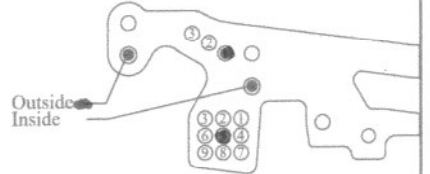
Rear Suspension

Toe: 3°
 Ride Height: 6 mm
 Droop: 4 mm
 Camber: -1.5 mm
 Anti/Pro Squat: _____
 Hub: STD. Offset 0° 1/2° 1° 2°
 Rear Pivot: 0° 1° 2°
 Roll Center: LOW +1.35 mm
 Arm Spacing: MIDDLE
 Shock Position: 1 GATOR
 Camber Link: SB
 Camber Link Ball Stud: _____
 Sway Bar: NONE

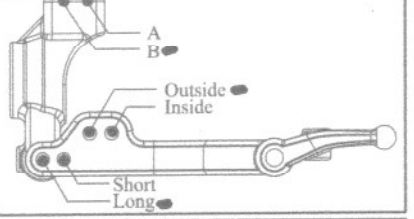
Up Travel: _____
 Arm Length: Short Long
Rear Drivetrain
 Diff Height: High Low
 Drive Axle: _____
 Hex Width: .165 stk. .195 .225

Shocks

Oil: 35 WT
 Oil Brand: LOSI
 Piston: 54
 Spring: 20 LB
 Bladder: STD
 Above Bladder: 2 x O RINGS



— # of Washers Under Ball Stud
 — Size Of Washer



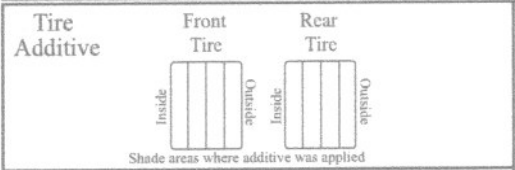
Body MAZDA 6 (S&B)
 Wing _____
 FR Body Hole _____
 RR Body Hole Inside Outside
 5th Body Hole _____
 Body Height _____

Motor BROAD MONSTER
 Turns 27 T
 Brushes 4499
 Springs GRABIN
 Timing _____

Spur Gear 126
 Pinion Gear 39
 Ratio 5.912
 Roll Out _____
 Fans NONE

Servo _____
 ESC QUANTUM 2
 Receiver _____
 Battery _____
 Transponder Location _____

Tires: _____ Brand/Compound _____ Size (mm) _____ Insert _____ Wheel _____ Tire Warmers YES 45 Temp °F or °C
 Front: RP 30
 Rear: RP 30 NO



NOTES:
WITH HIGH ROLL CENTER CAR TOO TWICKY.

