

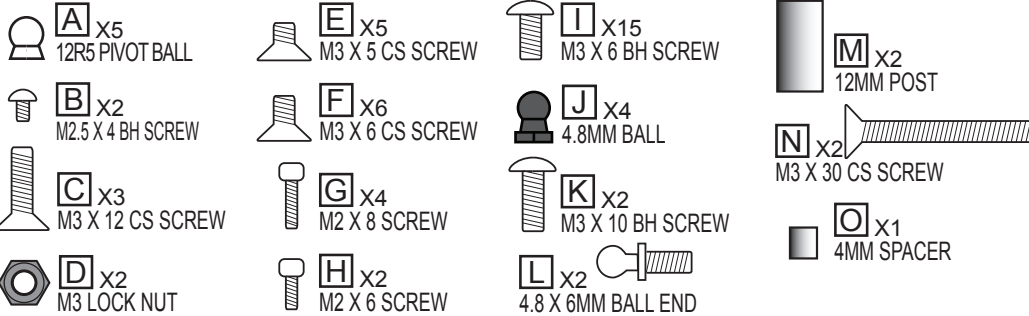


Recommended tools/ shop items:  
 - 3mm, 2mm & 1.5mm hex wrenches  
 - 5.5mm Socket Wrench  
 - BLUE thread lock (Loctite or Pacer)

Hardware list:

**TAMIYA F104 OR F103 REQUIRED (not TRF101).**

**Also required:**  
**PROTOFORM F1-14 OR F1-13 body or similar wide f1 body (Xray F1 ok) t**  
**Low profile servo (KO or Futaba is suggested)**  
**Rear wing mount (unless you have the F104v2)(OK =Tamiya 54375, Exotek 1376, etc)**  
**Dampening lube (example CRC blue or Tamiya)**  
**Tamiya TRF damper #53901 (if you don't already have this)**



This kit is for experienced modelers and you build and use it at your own risk. Follow the TAMIYA manual for build up, care and safety procedures. Except where noted this kit was designed to work with TAMIYA parts only.

### Secure metal thread with a **SMALL** amount of **BLUE** thread lock.

1. **ASSEMBLY PREP:** Note the parts included with the conversion below.

2. **CARBON PREP:** Gluing the edges of the chassis is NOT needed. This will make the chassis stiffer and may alter performance. For darker appearing edges simply coat the edges with some blue thread lock.

3. **REAR POD:** Assemble the center pivot as shown. Attach it and the 2 swivel balls as shown to the pod plate.

4. **ASSEMBLY:** Attach posts, balls and rear center pivot as shown.

5. **ASSEMBLY:** Snap 2 nylon links onto ball ends. Next insert screws.

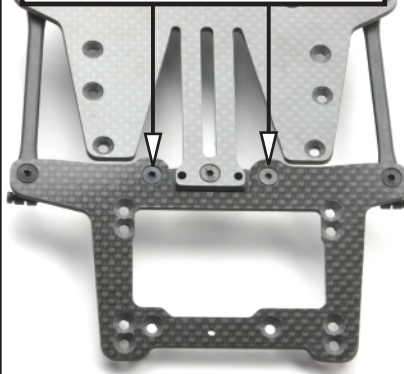
**PATENT PENDING (#61903117)**  
**'Hybrid Link' suspension**

Secure metal thread with a **SMALL** amount of **BLUE** thread lock.

6. CHECK ALIGNMENT

IMPORTANT- DO NOT OVERTIGHTEN 2 SCREWS HERE. INSURE THAT THE POD MOTION IS SMOOTH AND FREE.

TO RESET POD ALIGNMENT; Slightly loosen the 2 center pod link holder screws, flex the rear pod a few times and then retighten screws slightly. **THE LOOSER THESE 2 SCREWS ARE THE FREER THE POD WILL BE.**



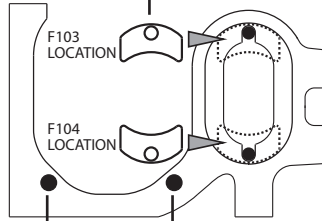
7. MOTOR PLATES

INSTALL AXLE SPACERS IN UPPER OR LOWER LOCATIONS.

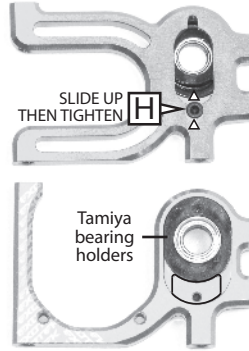
F103 LOCATION

F104 LOCATION

MOUNTING HOLES FOR 24X24 FAN. USE M2.5 SCREWS.

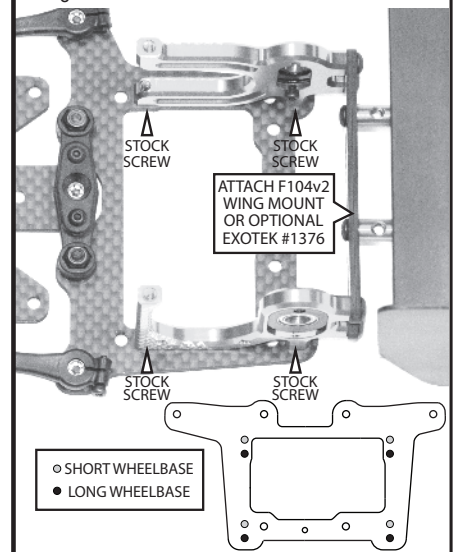


RIGHT MOTOR PLATE



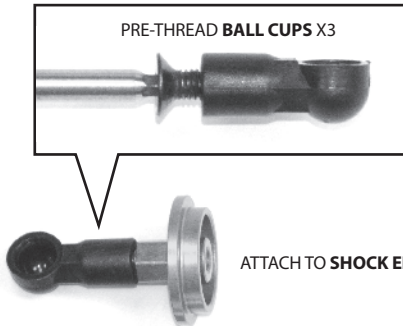
LEFT MOTOR PLATE

8. ASSEMBLE: Attach motor plates and stock wing mount.



9. BALL CUPS

PRE-THREAD BALL CUPS X3

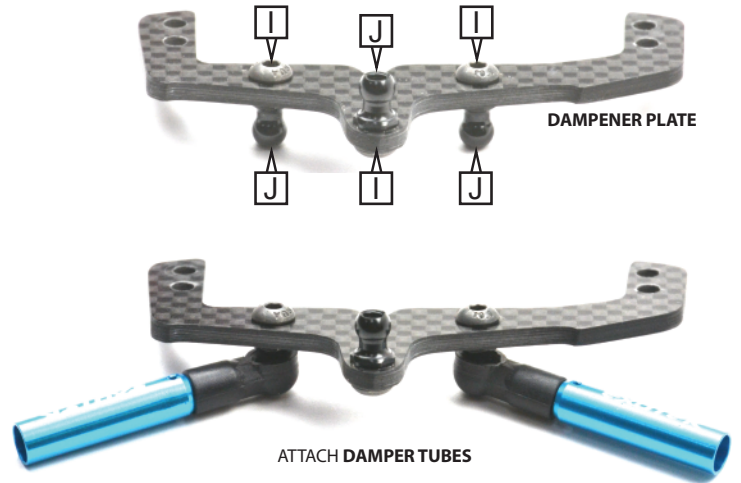


ATTACH TO SHOCK END

ATTACH TO DAMPER TUBE

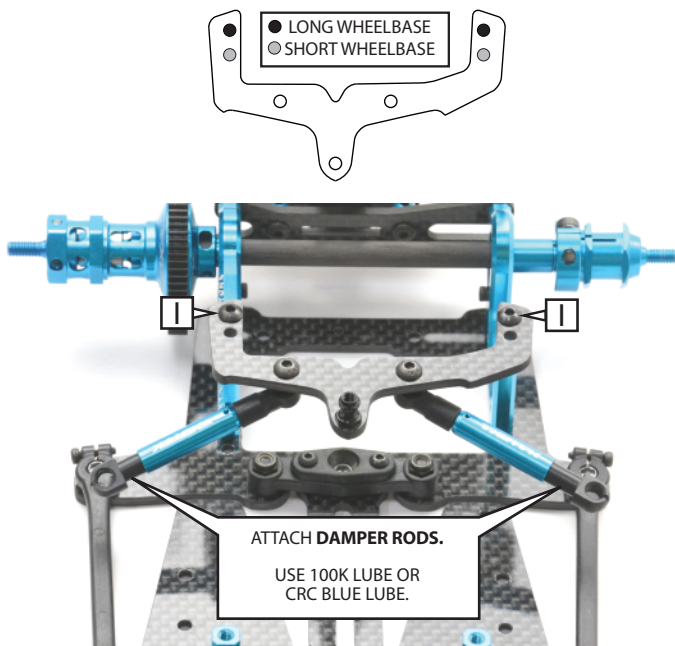
ATTACH TO DAMPER TUBE

10. ASSEMBLE AS SHOWN

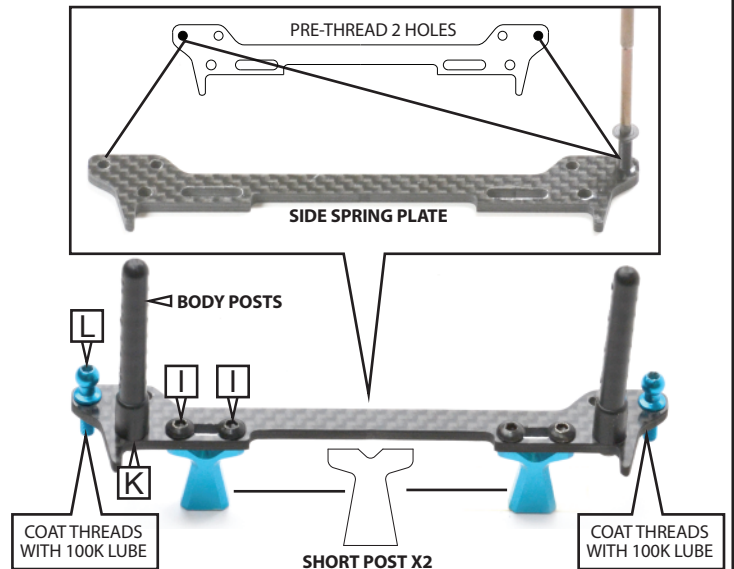


11. ASSEMBLE AS SHOWN

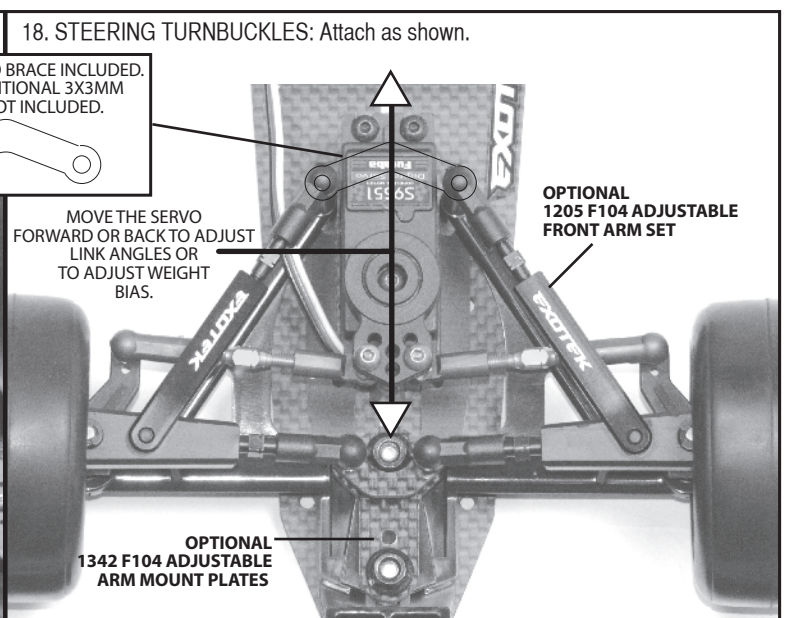
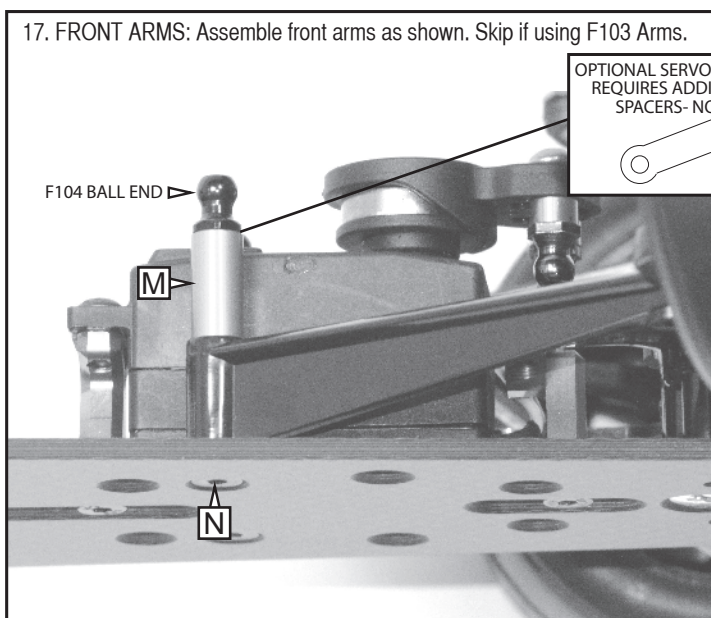
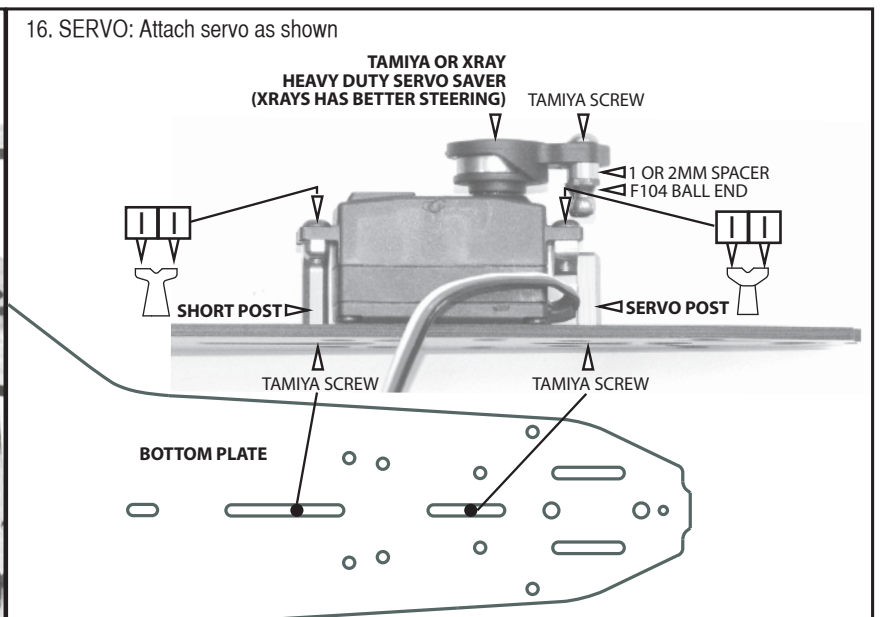
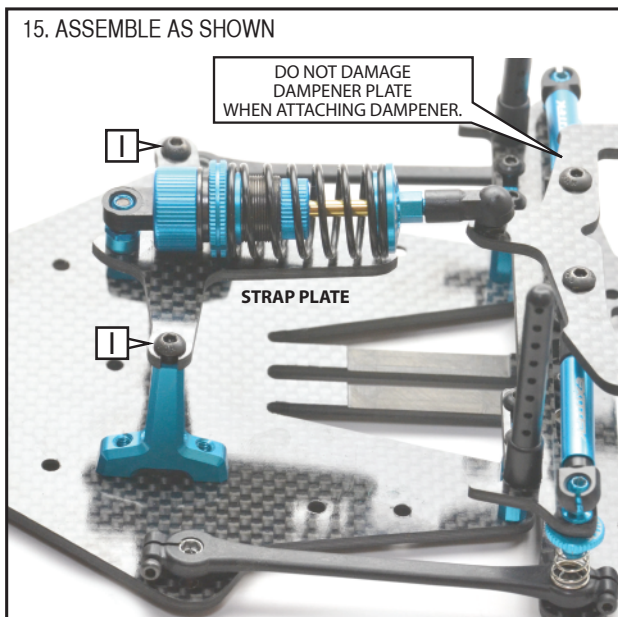
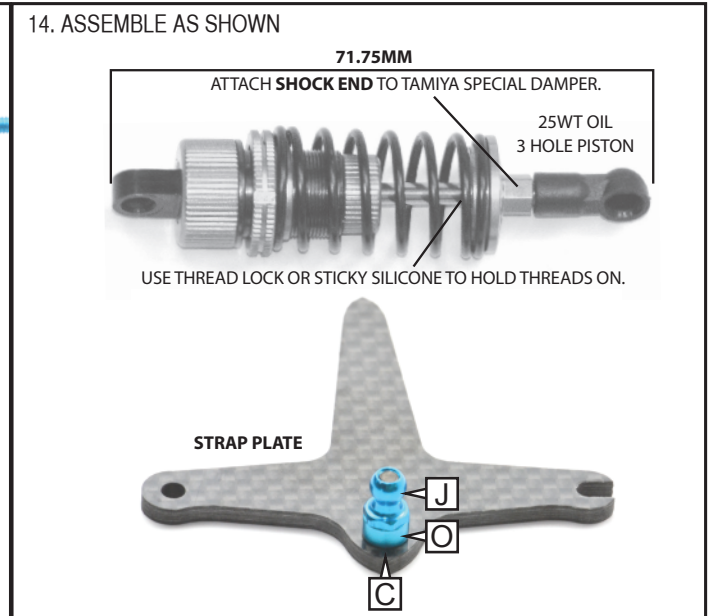
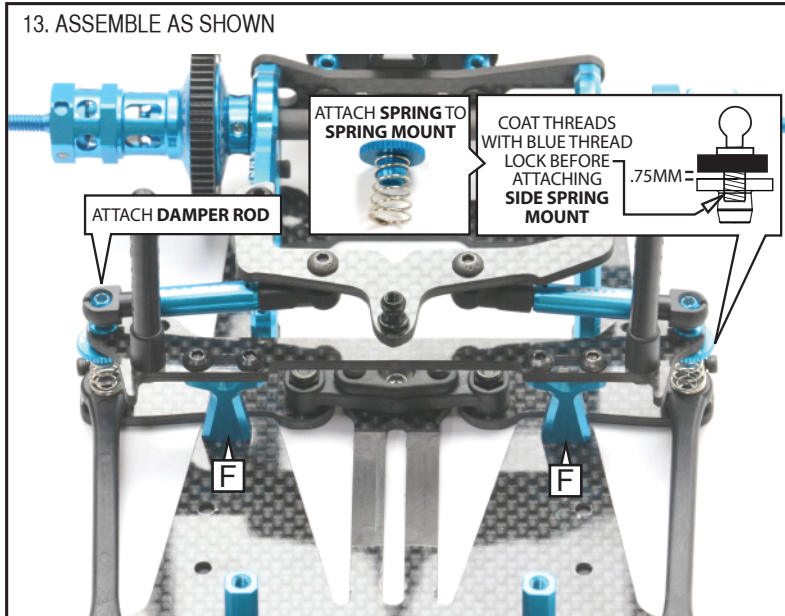
● LONG WHEELBASE  
○ SHORT WHEELBASE



12. ASSEMBLE: Pre thread 2 holes then assemble as shown. Do not damage part L when installing.



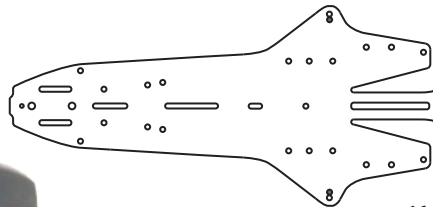
Secure metal thread with a **SMALL** amount of **BLUE** thread lock.



# FR3

## F104/ F103 CHASSIS CONVERSION

TAMIYA F60 WING



BE CAREFUL THAT THE CHASSIS HERE DOES NOT BOTTOM OUT OR SPIN OUTS MAY OCCUR.

DIFF - TIGHT  
F104 DIFF BEARING- MORE STEERING (MORE DIFFING)  
F103 THRUST BEARING- MORE STABILITY (LESS DIFFING)

SOFT SPRING- MORE STEERING  
MED/ HARD SPRINGS- LESS STEERING

USE THIN HIGH FLEX  
16 GAUGE WIRES FOR THE MOTOR  
AND SOFT SENSOR WIRE FOR  
BETTER REAR TRACTION.  
www.tqracing.com

USE SOFTER SPRING FOR ON POWER  
GRIP (53163 TAMIYA FLO RED SPRING).  
USE FIRMER SPRING FOR MORE  
ON POWER STEERING.

-1.5° CAMBER  
+.5° TOE OUT

25WT OIL  
3 HOLE PISTON

OPTIONAL  
1365 F1 / PAN CAR HEAT SINK

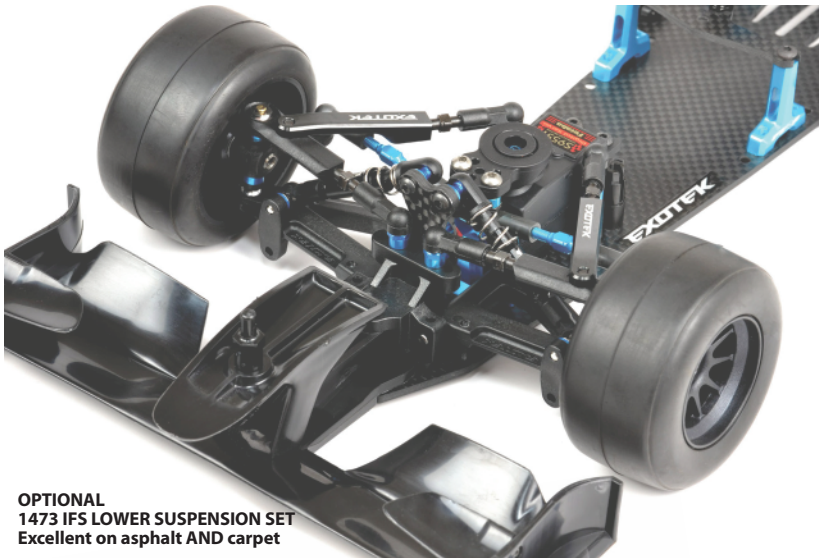
PIT SHIMIZU  
0572 HOT WEATHER/ ASPHALT  
0575 COOL WEATHER/ CARPET

CHANGE FRONT TIRES TO TUNE FOR MORE OR LESS STEERING  
51399 TAMIYA F1 MEDIUM FRONT- GREAT STABLE HANDLING FOR ASPHALT  
SHIMIZU 0571 SOFT- GOOD STEERING CARPET (VERY EDGY)  
SHIMIZU 0574 SOFT- MORE STEERING CARPET (VERY EDGY)  
SHIMIZU 0573 MED- EXTRA STABLE

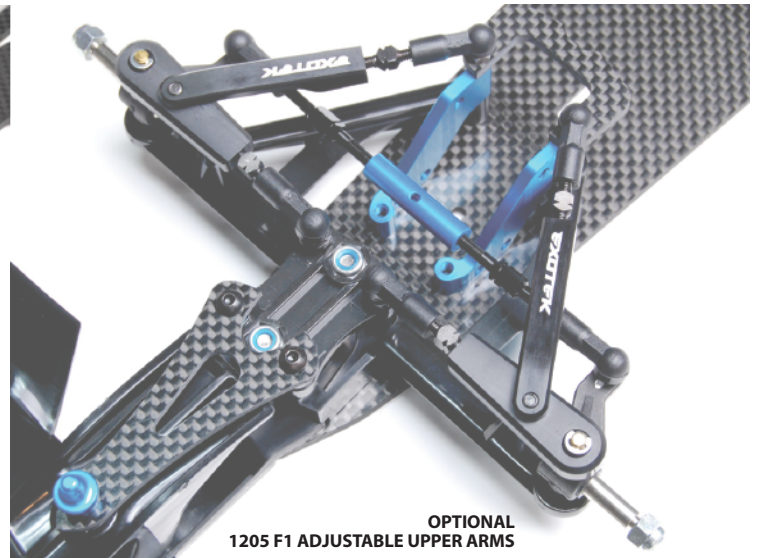


WWW.EXOTEKRACING.COM

THANK YOU FOR SUPPORTING EXOTEK RACING!



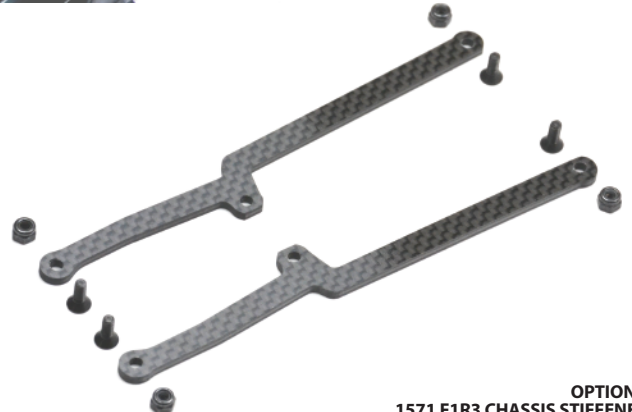
OPTIONAL  
1473 IFS LOWER SUSPENSION SET  
Excellent on asphalt AND carpet



OPTIONAL  
1205 F1 ADJUSTABLE UPPER ARMS



OPTIONAL  
1572 F1R3 ALLOY MAIN PLATE, 7075



OPTIONAL  
1571 F1R3 CHASSIS STIFFENERS