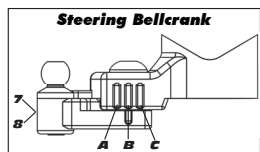
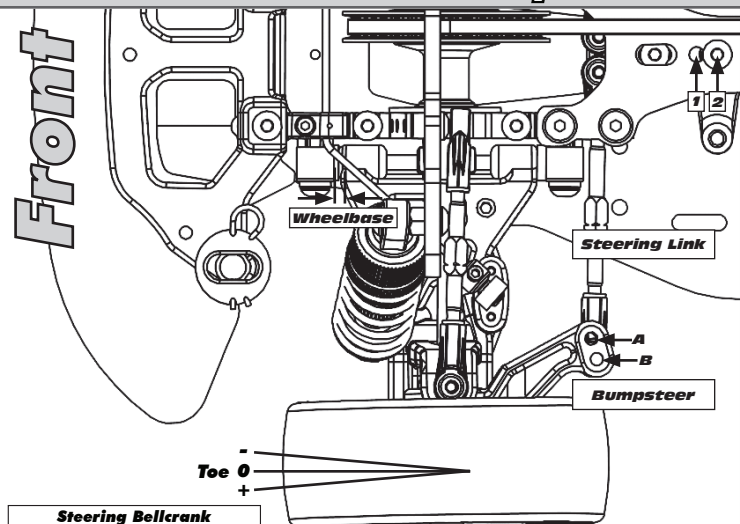


Driver:  
Track:  
Conditions:

Date:  
Event:

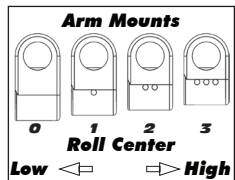
Rev.1



Camber  
+ 0 -

Outer Ball & Shims

Hex Spacing



### Transmitter

Turning Circle:

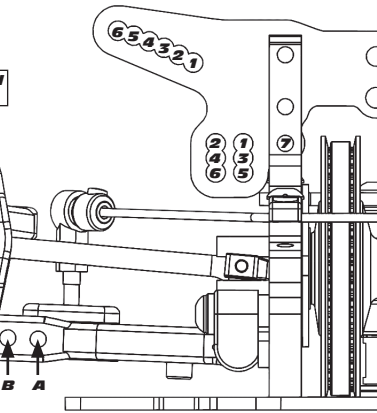
Steering Expo:

Brake E.P.:

Throttle Expo:

Motor

Notes:



FRONT OF CAR



Gearing

Notes:

Front	Alignment	Rear
	Ride Height	
	Camber	
	Caster	N/A
N/A	Rear Hub Toe	
	Toe (Total)	
	Hex Spacing	
	Wheelbase	
	Steering Bellcrank	N/A
	Steering Link	N/A
	Bumpsteer	N/A

Notes:

### Suspension Geometry

	Shock Position	
	Camber Link Position	
	Outer Ball & Shims	
	FWD Arm Mount	
	FWD Mount Shim	
	RWD Arm Mount	
	RWD Mount Shims	
	Drop	
	Anti-Roll Bar	

Notes:

### Shocks

	Oil	
	Piston	
	Rebound	
	Spring	

Notes:

### Differentials

	Type	
	Setting	
	Cam Holder	
	Belt Tension Number	

Notes:

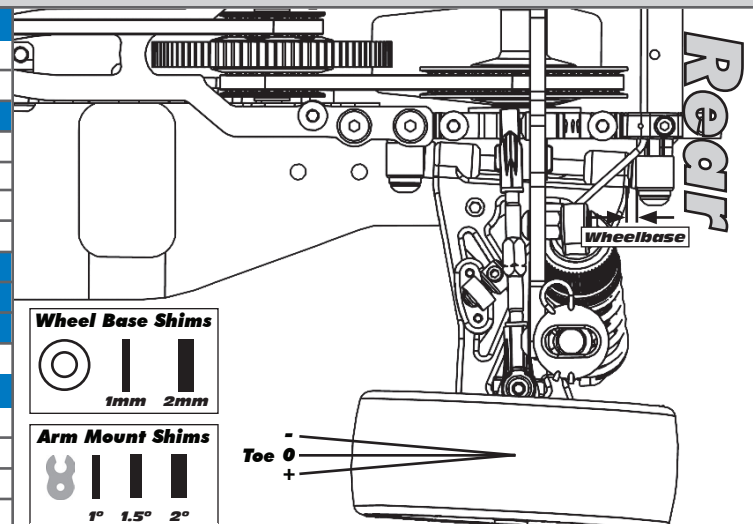
### Tires

	Type	
	Tire Diameter	
	Insert & Wheel	
	Additive & Amount	

Notes:

### Chassis

Chassis
Top Plate
Notes:



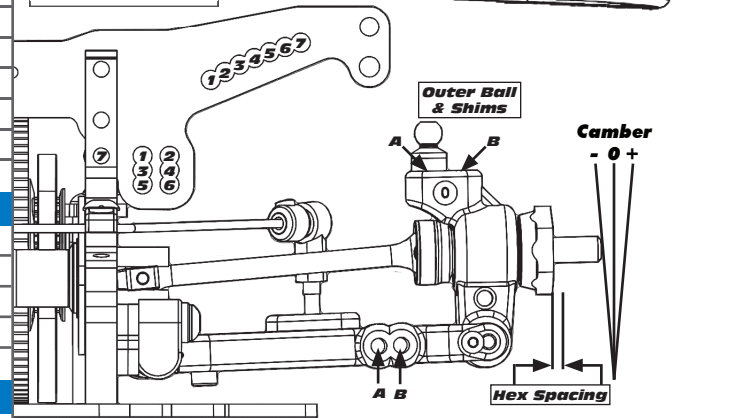
Wheel Base Shims



Arm Mount Shims



Toe 0



Outer Ball & Shims

Camber  
- 0 +

Hex Spacing

FRONT OF CAR



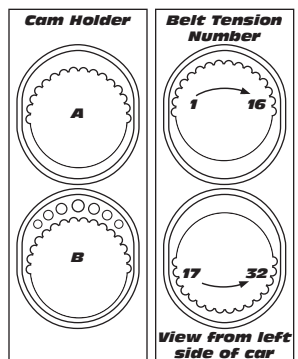
### Speed Control

E.S.C. Type:

E.S.C. Settings:

Body & Wing

Notes:



Battery Placement

Notes: