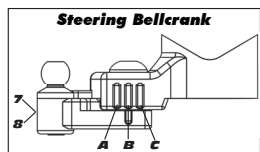
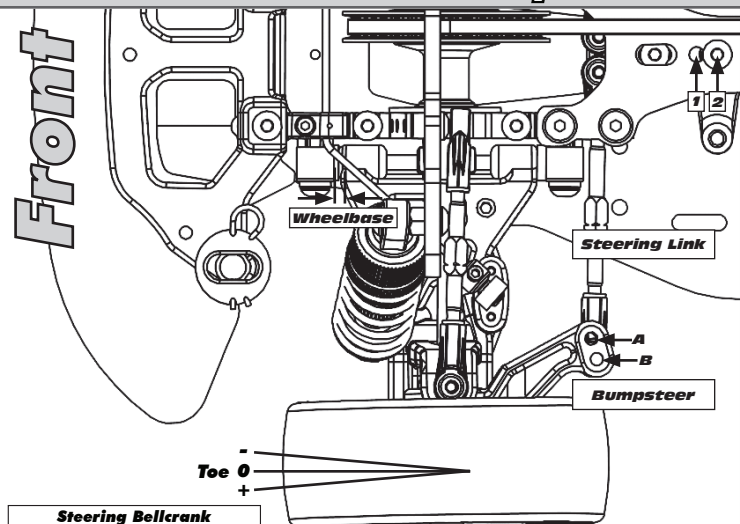


Driver:
Track:
Conditions:

Date:
Event:

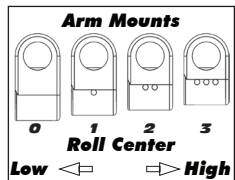
Rev.1



Camber
+ 0 -

Outer Ball & Shims

Hex Spacing



Transmitter

Turning Circle:

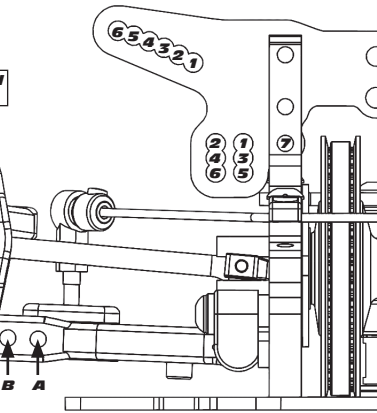
Steering Expo:

Brake E.P. :

Throttle Expo:

Motor

Notes:



FRONT OF CAR

B A

FWD Mount

RWD Mount

Gearing

/

Notes:

Front	Alignment	Rear
	Ride Height	
	Camber	
	Caster	N/A
N/A	Rear Hub Toe	
	Toe (Total)	
	Hex Spacing	
	Wheelbase	
	Steering Bellcrank	N/A
	Steering Link	N/A
	Bumpsteer	N/A

Notes:

Suspension Geometry

	Shock Position	
	Camber Link Position	
	Outer Ball & Shims	
	FWD Arm Mount	
	FWD Mount Shim	
	RWD Arm Mount	
	RWD Mount Shims	
	Drop	
	Anti-Roll Bar	

Notes:

Shocks

	Oil	
	Piston	
	Rebound	
	Spring	

Notes:

Differentials

	Type	
	Setting	
	Cam Holder	
	Belt Tension Number	

Notes:

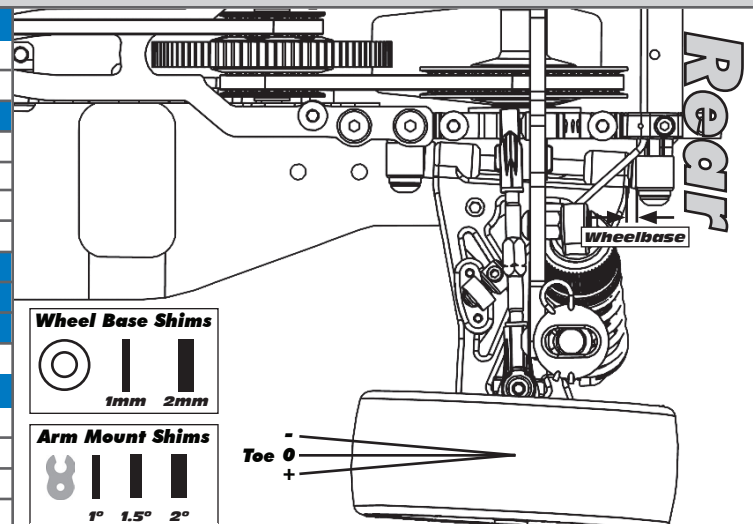
Tires

	Type	
	Tire Diameter	
	Insert & Wheel	
	Additive & Amount	

Notes:

Chassis

Chassis
Top Plate
Notes:



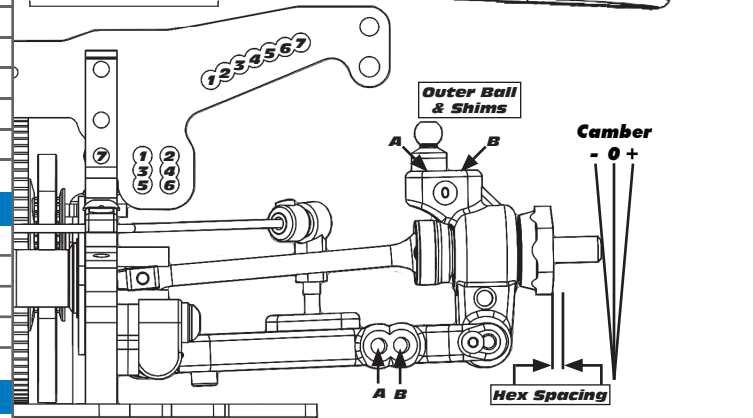
Wheel Base Shims



Arm Mount Shims



Toe 0



Outer Ball & Shims

Camber
- 0 +

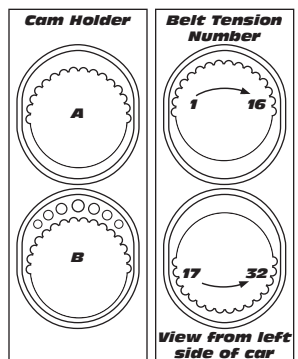
Hex Spacing

FRONT OF CAR

B A

FWD Mount

RWD Mount



View From left side of car

Speed Control

E.S.C. Type:

E.S.C. Settings:

Body & Wing

Notes:

Battery Placement

Notes:

:: For more setups, visit RC10.com and click on "Racing"