

R802110
Servo Saver Tower

R802008
Servo Saver Alu

R807010
Servo Saver Spring

R801108
Ackermen Adjustment Shims (2) 0/+1.5

R808010
Ackermen Plate 8.5mm Carbon

R105104
3x6 Round Screw

R106010
5x8x4mm Ball Bearing

BAG 01

When track "High Traction" or want to reduce steering

Default Setup

When track "Low Traction" or want to increase steering

R801090
Ball End 5.8mm Short (2)

R803015
Anti Roll Bar Ball Screw (2)

R803014
Anti Roll Bar Ball Head (2)

R802041
Front Shock Mount S (2)

R801015
Front Low Arm Set

R105104
3x6 Round Screw

R105105
3x8 Round Screw

R105101
2x5mm Cap Screw

BAG 02

R805104
4x12 Round Screw

R805102
4x8 Round Screw

R801021 (Optional)
Front Low Arm Holder (4)

R801022
Front Low Arm Holder +2mm (4)

R802006
Front Upper Arm Bracket

R803031
Front Low Arm Pin 3x77.8

R801094
Spacer 1mm/2mm/3mm

BAG 02

R801021 (Optional)
Front Low Arm Long

R802042 (Optional)
Front Shock Mount L

Can increase steering best for low traction track.

Default Setup

R801022
Front Low Arm Short

R802041

R801072
Front Upper Arm (2)

R803033
Front Upper Arm Pin 3x49

R801023
Suspension Bracket Insert-Open (8)

R801094
Spacer 3mm+2mm+1mm

R105401
3x3mm Set

BAG 02

Default

Front Upper Arm Short

Front Upper Arm Medium

Front Upper Arm Long

R801055
Steering Block

R803018
7.9mm Ball End Long (2)

R802045
Front Steering Plate (2)

R803062
Front CVD Shaft (2)

R803063
Front Wheel Axle (2)

R802032
Front Tire Hook (2)

R807004
Tire Hook Spring (4)

R803064
CVD Insert (2)

R804003
7.9mm Ball End Nut (4)

R105104
3x6 Round Screw

R105401
3x3mm Set

R806100
Ø2.5x11.8 Pin

R806101
Ø3x19.8 Pin

R806020
12x18x4mm Ball Bearing

R803051
12.1x15x0.5mm

BAG 02


R803016
Ball Head 4.9mm (4)

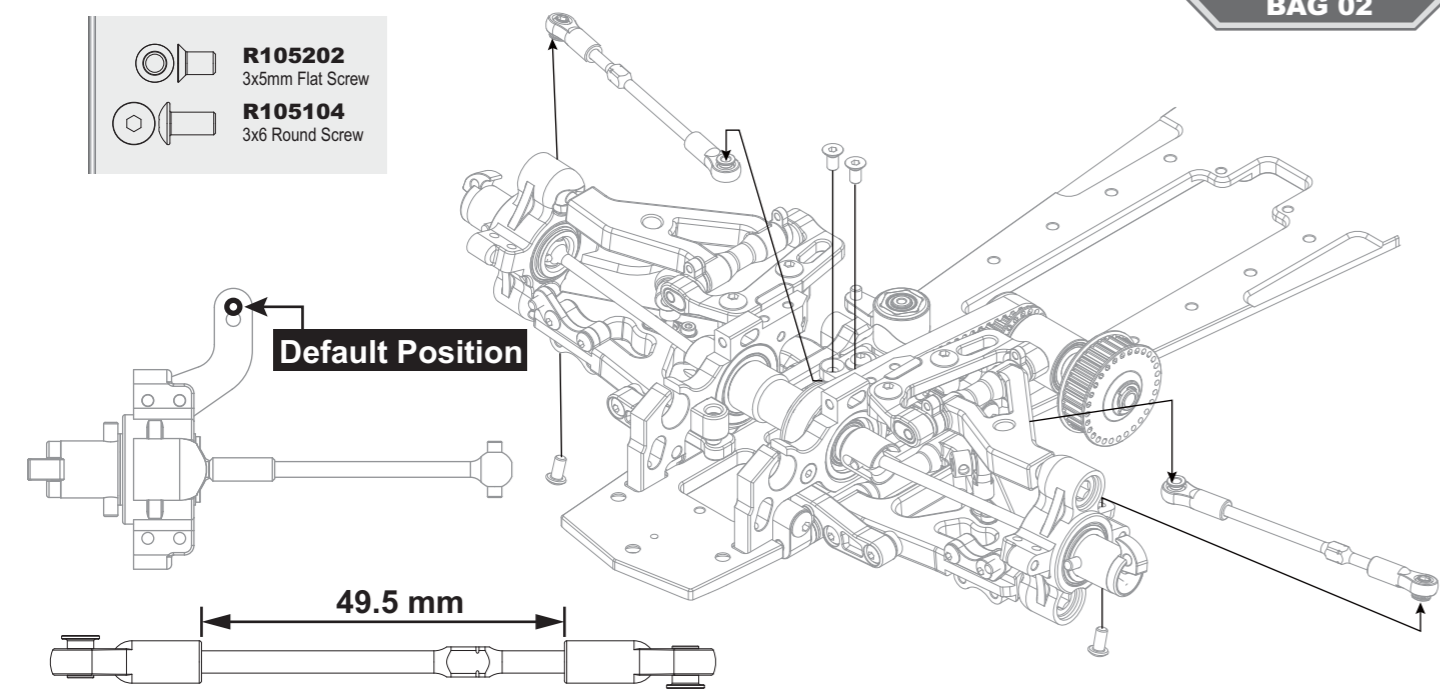
R101070
Ball Joint 4.9mm Open (4)

R803035
3mmX62mm Rod (2)

BAG 02

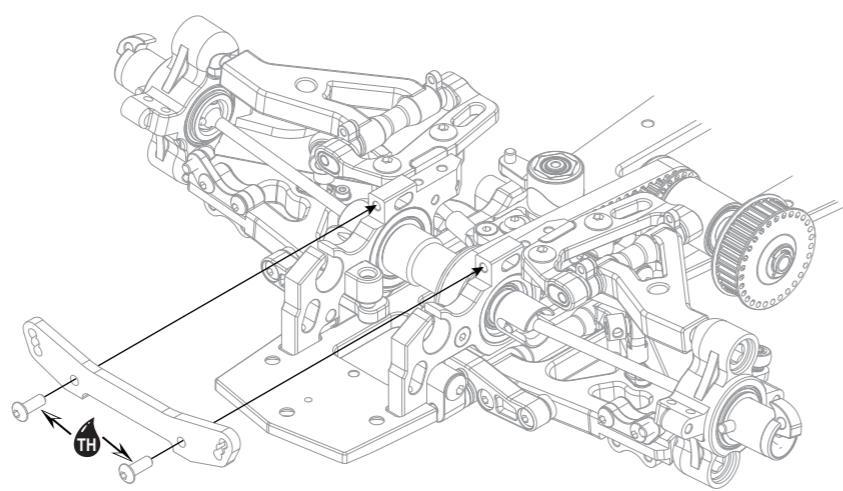
BAG 02

-  **R105202**
3x5mm Flat Screw
-  **R105104**
3x6 Round Screw








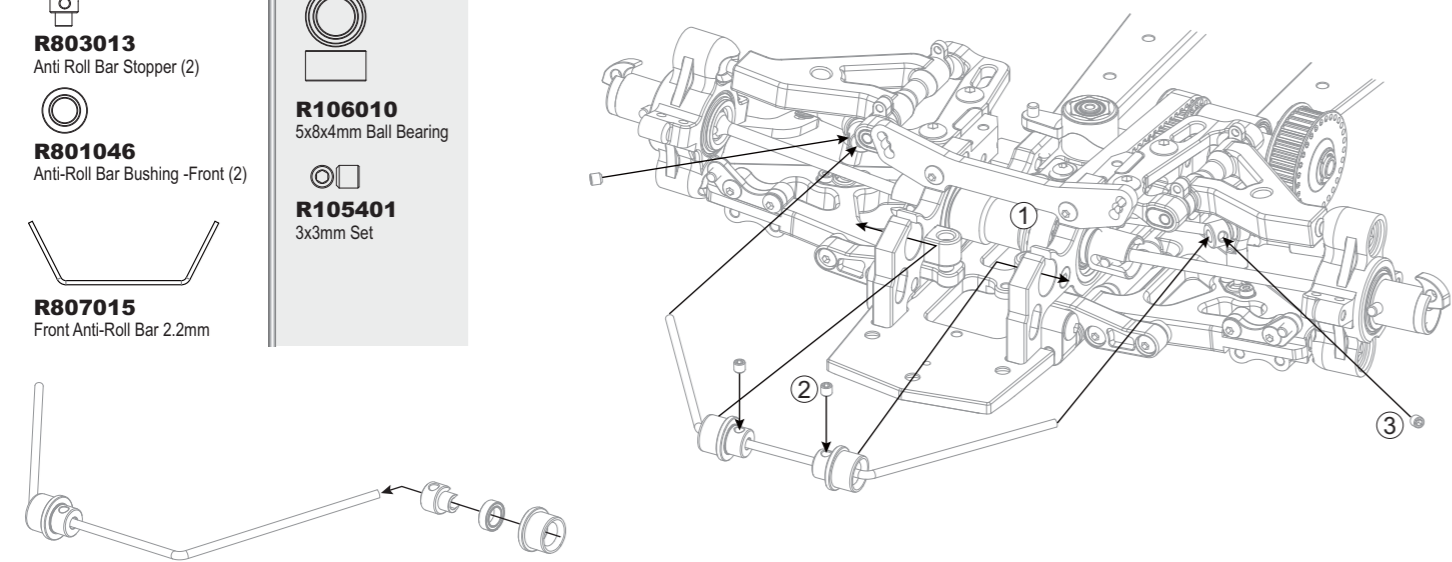
BAG 02

-  **R808002**
Front Shock Tower
-  **R105105**
3x8 Round Screw




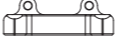










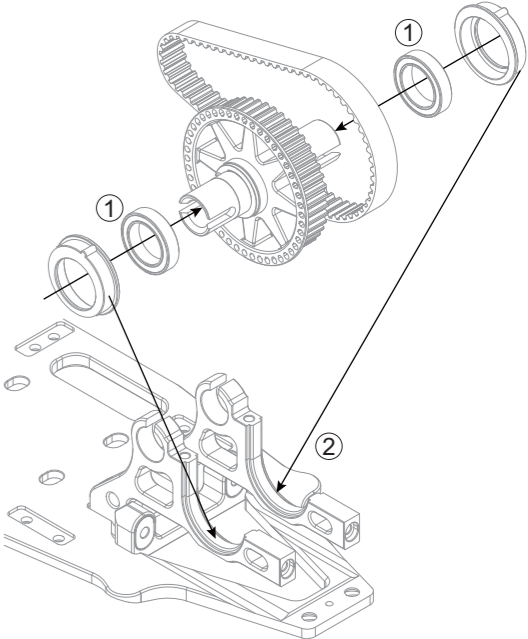
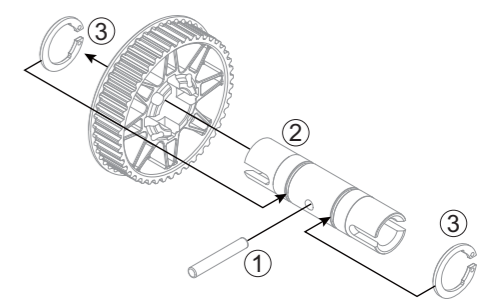
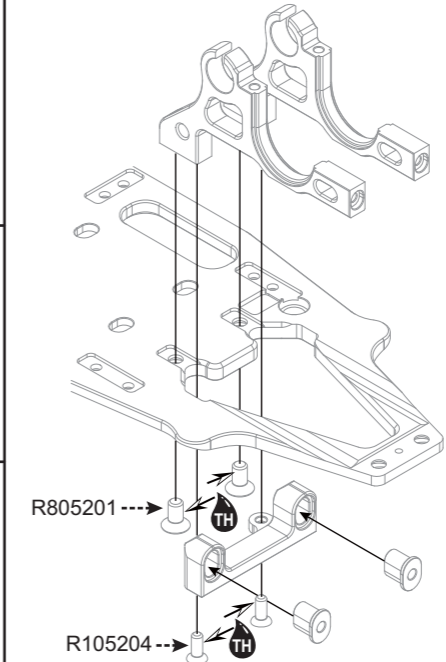
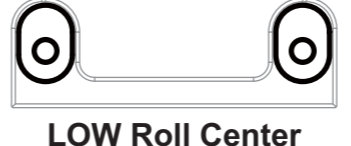
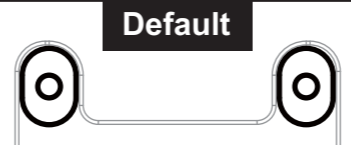
BAG 02

-  **R803013**
Anti Roll Bar Stopper (2)
-  **R801046**
Anti-Roll Bar Bushing -Front (2)
-  **R807015**
Front Anti-Roll Bar 2.2mm
-  **R106010**
5x8x4mm Ball Bearing
-  **R105401**
3x3mm Set








BAG 03

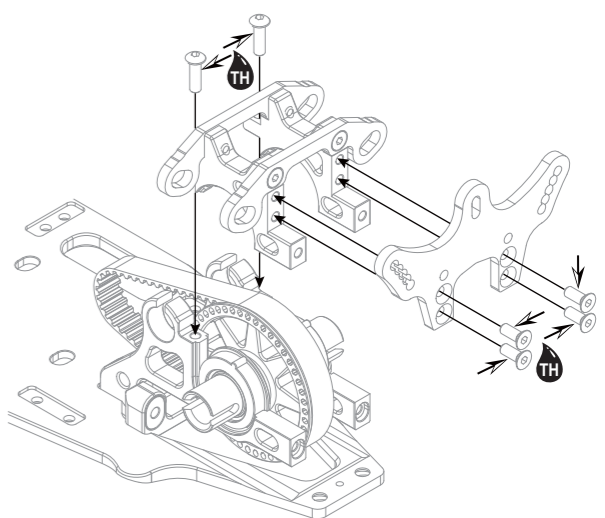
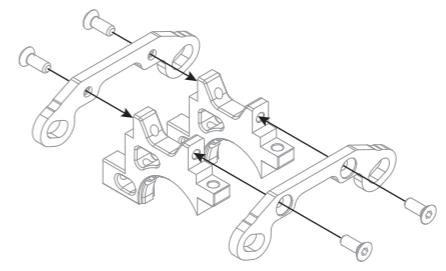
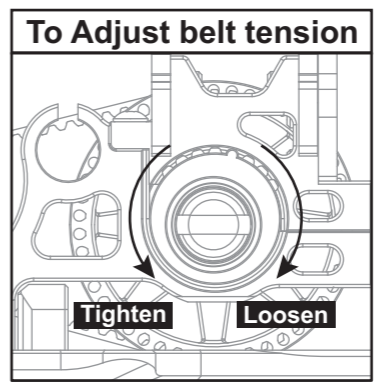
-  **R801113**
Pulley Set-Rear
-  **R803010**
Rear Solid Axle
-  **R805040**
12mm C Clip (6)
-  **R802060**
Rear Low Arm Brackets RF
-  **R802021**
Rear Bulkhead Low
-  **R801024**
Suspension Bracket Insert-Closed (8)
-  **R804031**
Rear Belt 201-8
-  **R801040**
Excenter Bushing Solid Axle (2)
-  **R805201**
4x8mm Flat Screw
-  **R105204**
3x8mm Flat Screw
-  **R806101**
Ø3x19.8 Pin
-  **R806020**
12x18x4mm
Ball Bearing



BAG 03

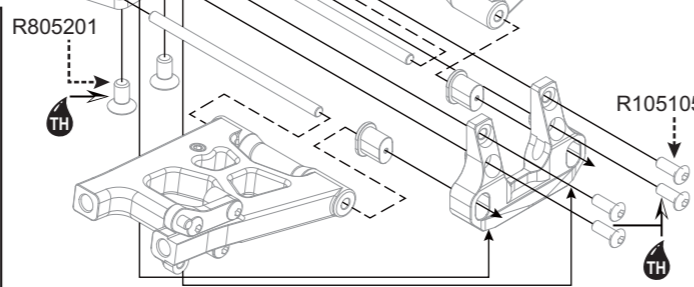
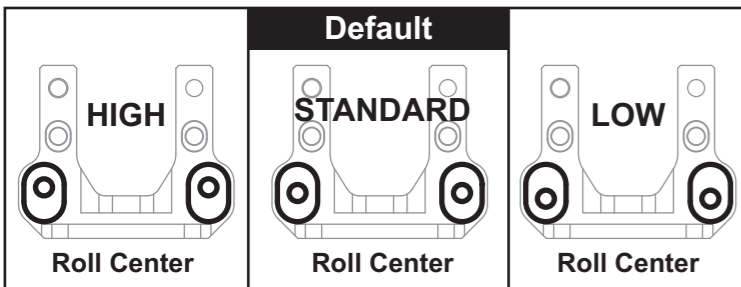
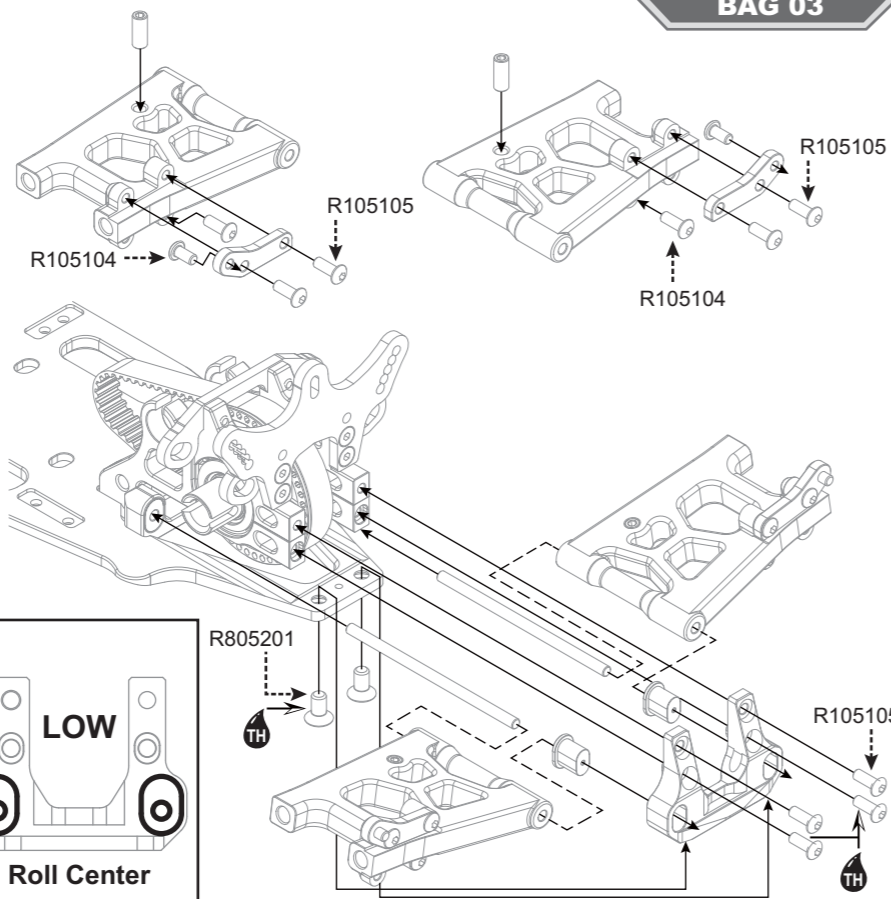
-  **R808006**
Rear Upper Link Plate
-  **R808003**
Rear Shock Tower
-  **R802022**
Rear Bulkhead Upper

-  **R105204**
3x8mm Flat Screw
-  **R105106**
3x10 Round Screw



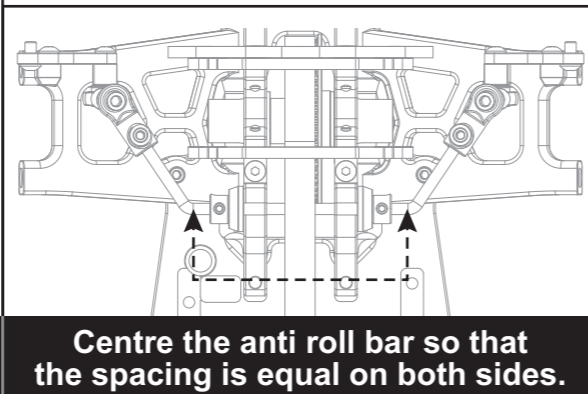
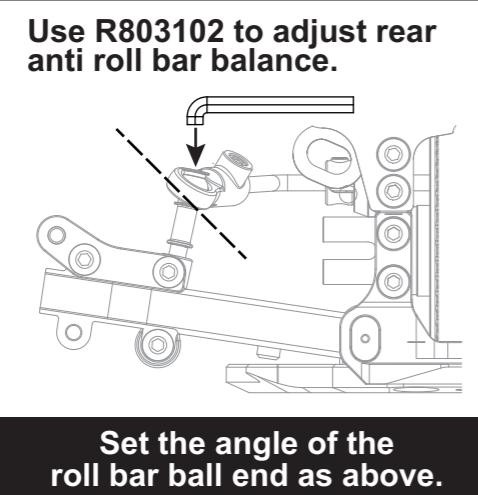
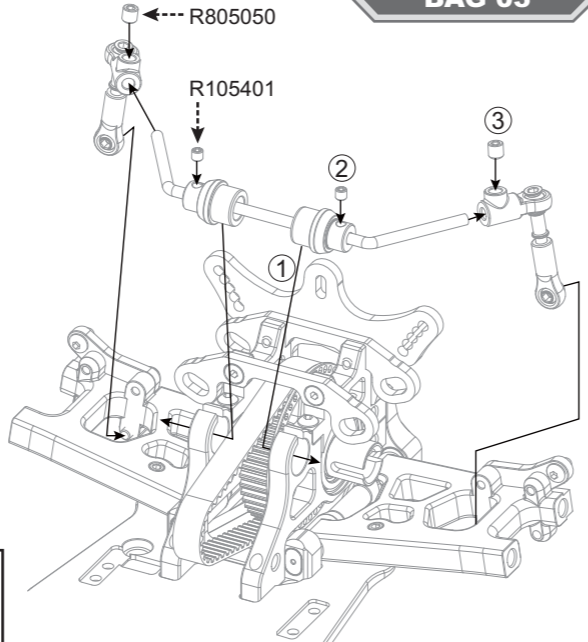
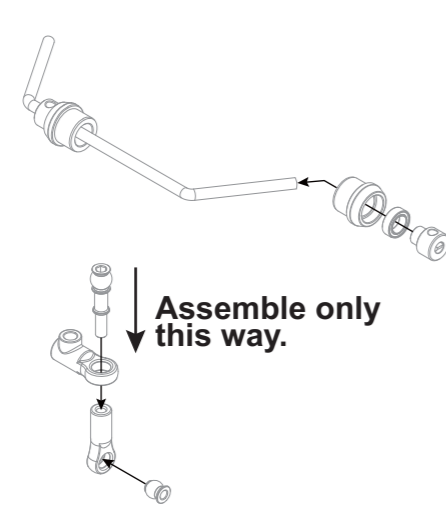
- R801010**
Rear Low Arm
- R802061**
Rear Low Arm Brackets RR
- R801024**
Suspension Bracket Insert-Closed (8)
- R802044**
Rear Shock Mount S (2)
- R803032**
Rear Low Arm Pin (2)

- R105104**
3x6 Round Screw
- R105105**
3x8 Round Screw
- R805201**
4x8mm Flat Screw
- R805053**
4x10mm Set



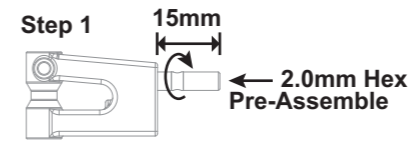
BAG 03

- R807021**
Rear Anti-Roll Bar 2.6mm
- R801047**
Anti-Roll Bar Bushing -Rear (2)
- R803013**
Anti-Roll Bar Stopper (2)
- R803019**
Anti-Roll Bar Adj Screw (2)
- R801092**
Rear Anti-Roll Bar Ball End (2)
- R803016**
Ball Head 4.9mm (4)
- R101070**
Ball Joint 4.9mm Open (4)
- R803102**
Anti-Roll Bar Tool

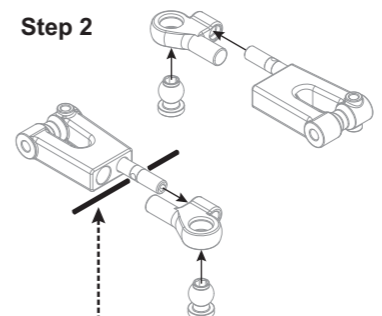


- R106010**
5x8x4mm Ball Bearing
- R105401**
3x3mm Set
- R805050**
4x4mm Set

- R801093**
Rear Upper Arm Set

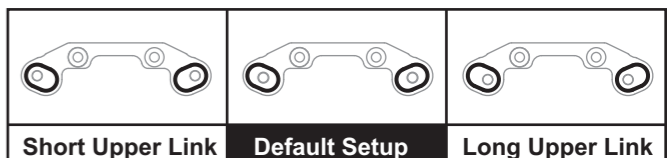
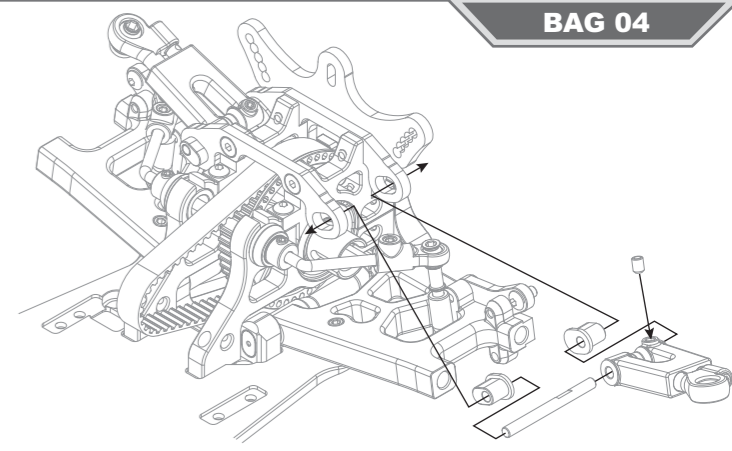


- R803024**
Ball Head 6.8mm (2)
- R803037**
3mmx17mm Turnbuckle (2)
- R801023**
Suspension Bracket Insert-Open (8)
- R803038**
Rear Upper Arm Pin 3x32.5 (2)



Use 1.5mm Steel bar to turn the turnbuckle
PS:DO NOT OVER TIGHT THE UPPER ARM BY 2.0mm HEX TOOL

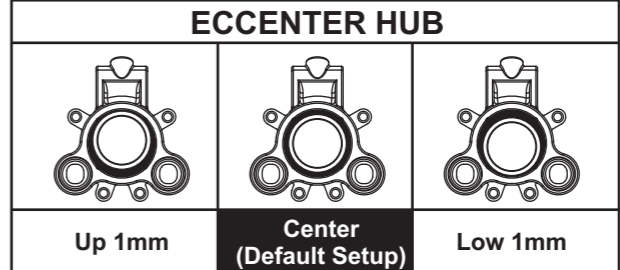
- R105401**
3x3mm Set



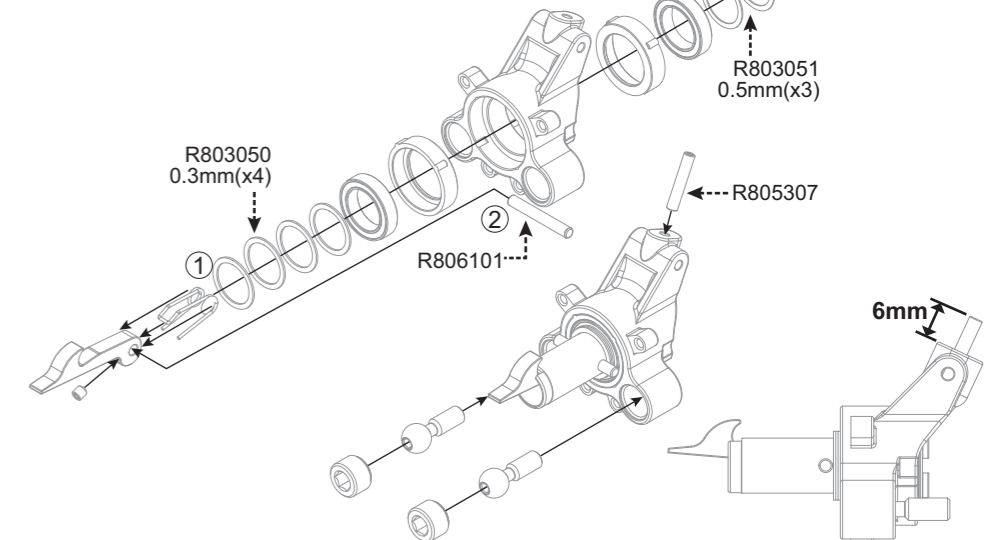
BAG 04

- R802033**
Rear Tire Hook (2)
- R807004**
Tire Hook Spring (4)
- R804003**
7.9mm Ball end Nut (4)
- R803017**
7.9mm Ball End Short (2)

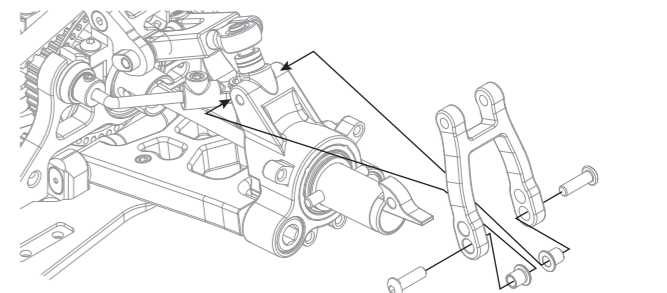
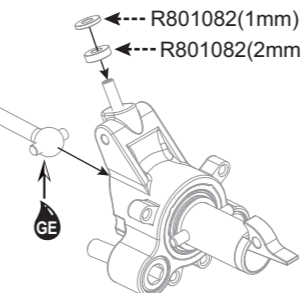
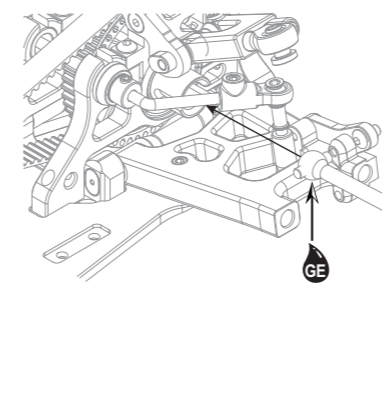
- R801050**
Rear Upright
- R803060**
Rear Wheel Axle (2)
- R801043**
Excenter rear upright bushing +1mm (x4)
+0mm (x4)



- R803050**
12.1x15x0.3mm
- R803051**
12.1x15x0.5mm
- R105401**
3x3mm Set
- R806020**
12x18x4mm Ball Bearing
- R806101**
Ø3x19.8 Pin
- R805307**
3x16 Set Screw



BAG 04



- R801070**
Rear Body Mount Arm (2)

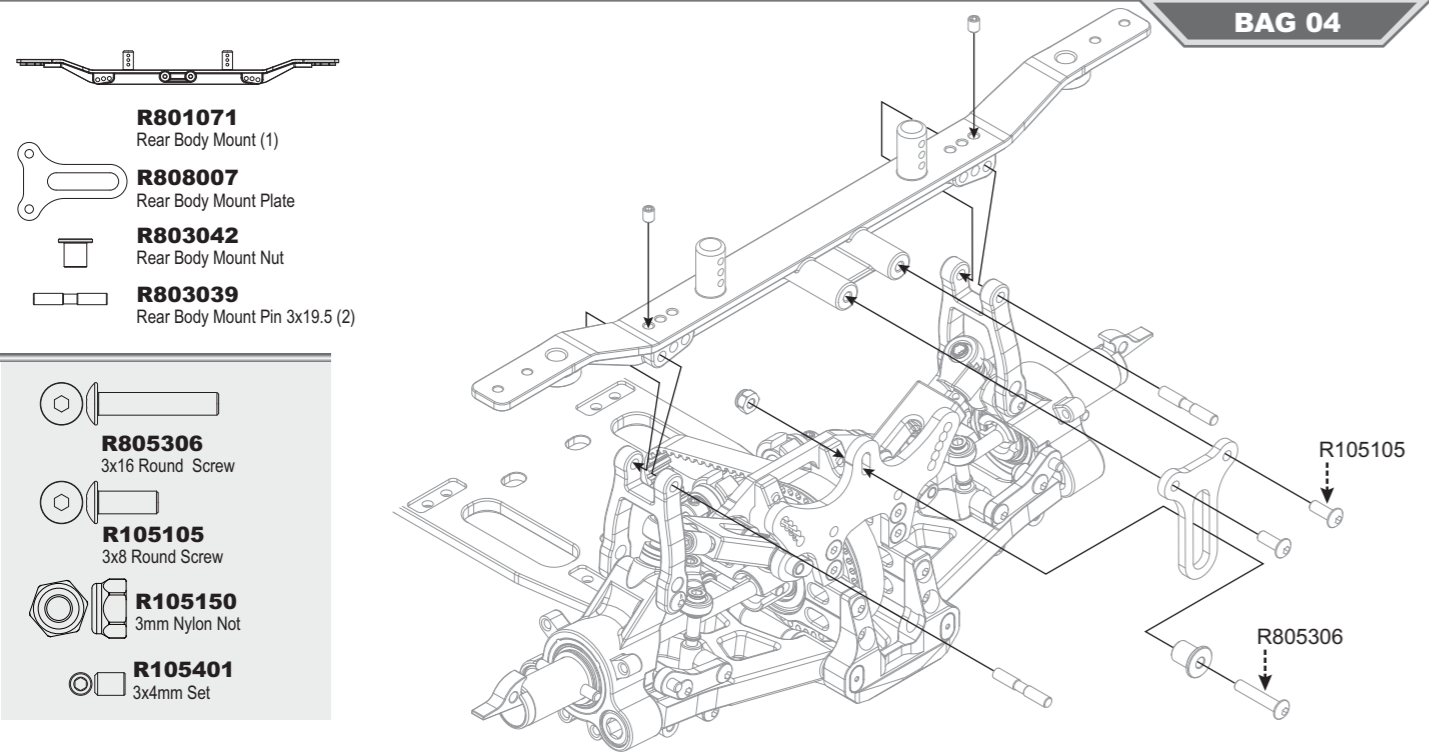
- R803061**
Rear Drive Shaft (2)

- R103007**
Steering Block Bushing (4)

- R801082**
3x7x1mm Shims
3x7x2mm Shims

- R105106**
3x10 Round Screw

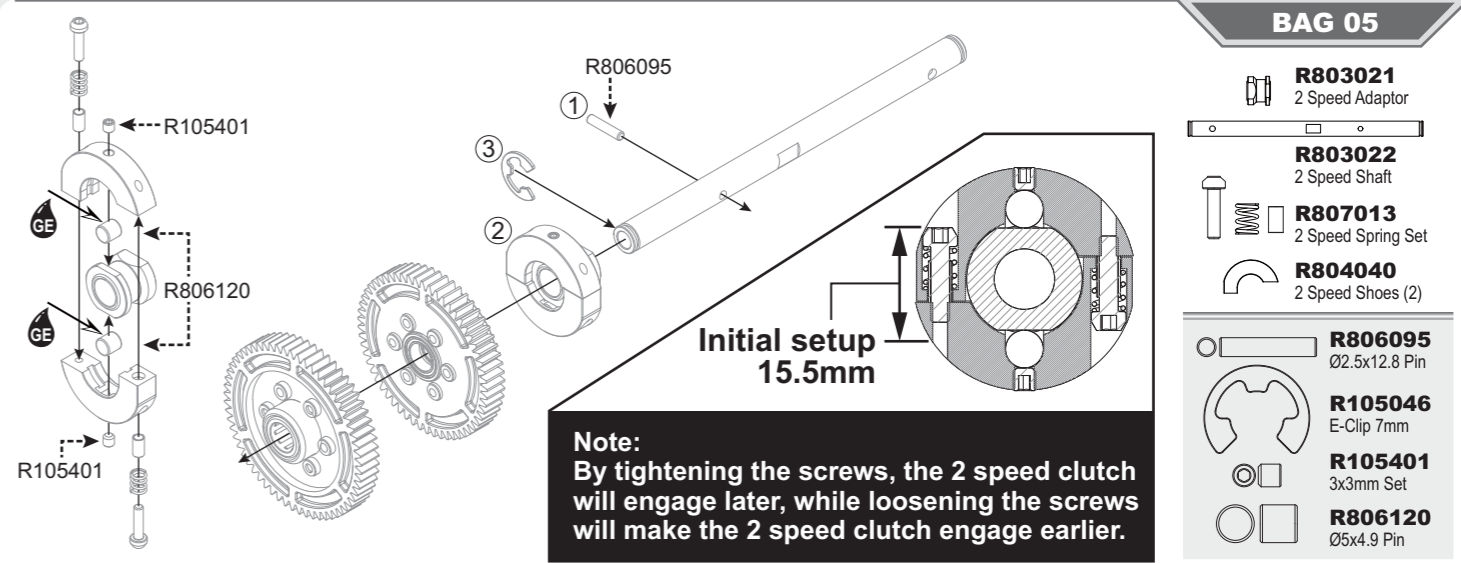
BAG 04



- R801071**
Rear Body Mount (1)
- R808007**
Rear Body Mount Plate
- R803042**
Rear Body Mount Nut
- R803039**
Rear Body Mount Pin 3x19.5 (2)

- R805306**
3x16 Round Screw
- R105105**
3x8 Round Screw
- R105150**
3mm Nylon Nut
- R105401**
3x4mm Set

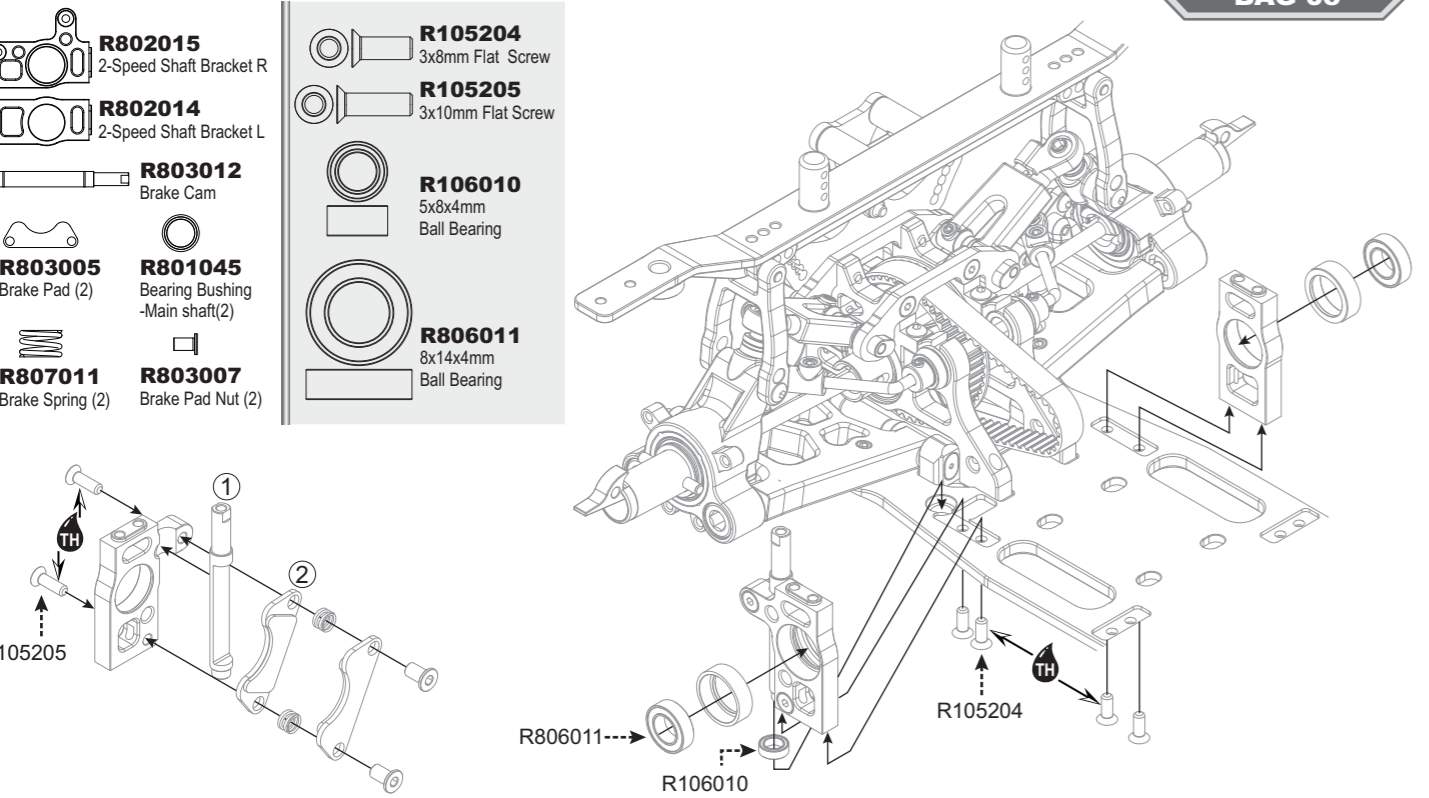
BAG 05



- R803021**
2 Speed Adaptor
- R803022**
2 Speed Shaft
- R807013**
2 Speed Spring Set
- R804040**
2 Speed Shoes (2)
- R806095**
Ø2.5x12.8 Pin
- R105046**
E-Clip 7mm
- R105401**
3x3mm Set
- R806120**
Ø5x4.9 Pin

Note:
By tightening the screws, the 2 speed clutch will engage later, while loosening the screws will make the 2 speed clutch engage earlier.

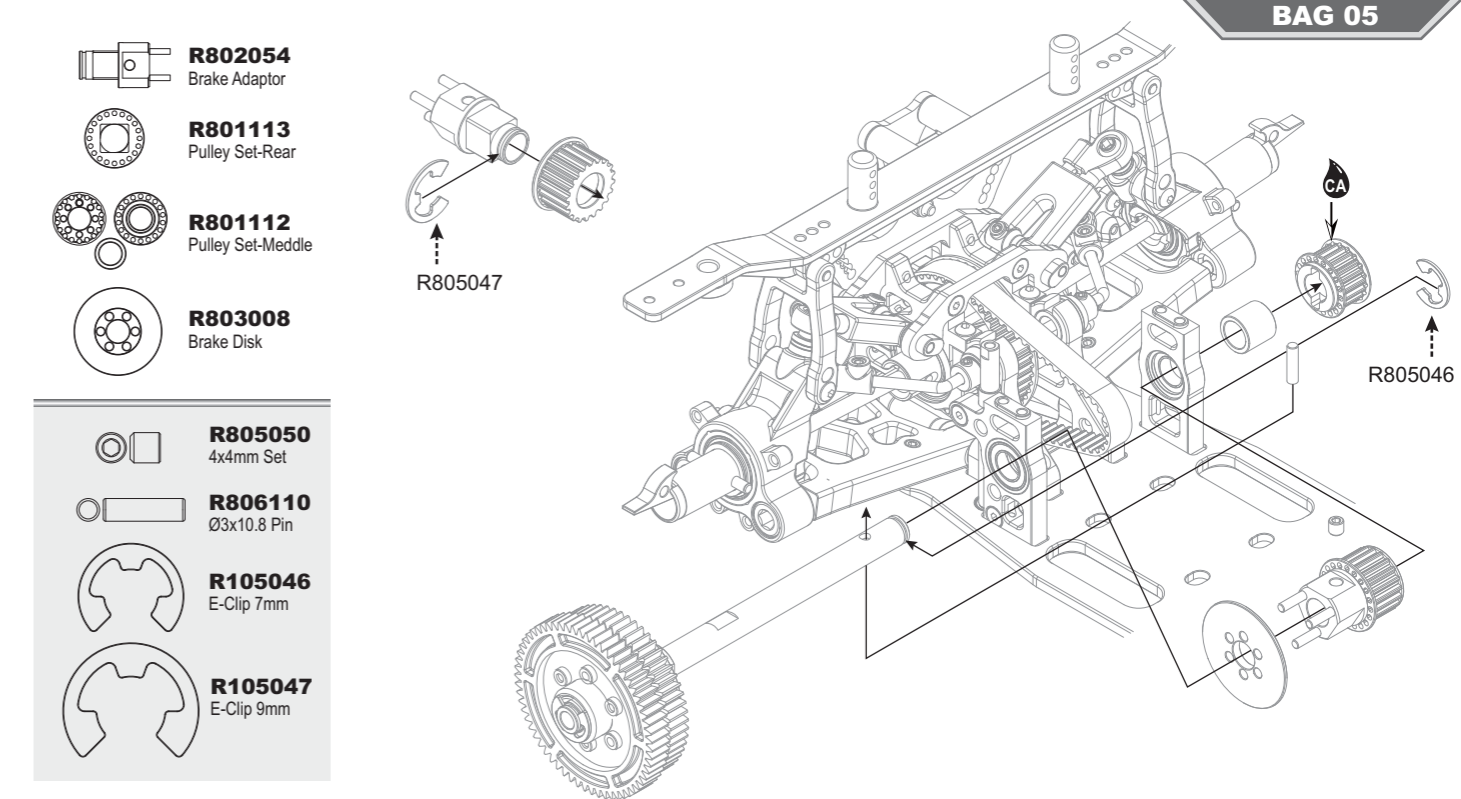
BAG 05



- R802015**
2-Speed Shaft Bracket R
- R802014**
2-Speed Shaft Bracket L
- R803012**
Brake Cam
- R803005**
Brake Pad (2)
- R807011**
Brake Spring (2)
- R801045**
Bearing Bushing -Main shaft(2)
- R803007**
Brake Pad Nut (2)

- R105204**
3x8mm Flat Screw
- R105205**
3x10mm Flat Screw
- R106010**
5x8x4mm Ball Bearing
- R806011**
8x14x4mm Ball Bearing

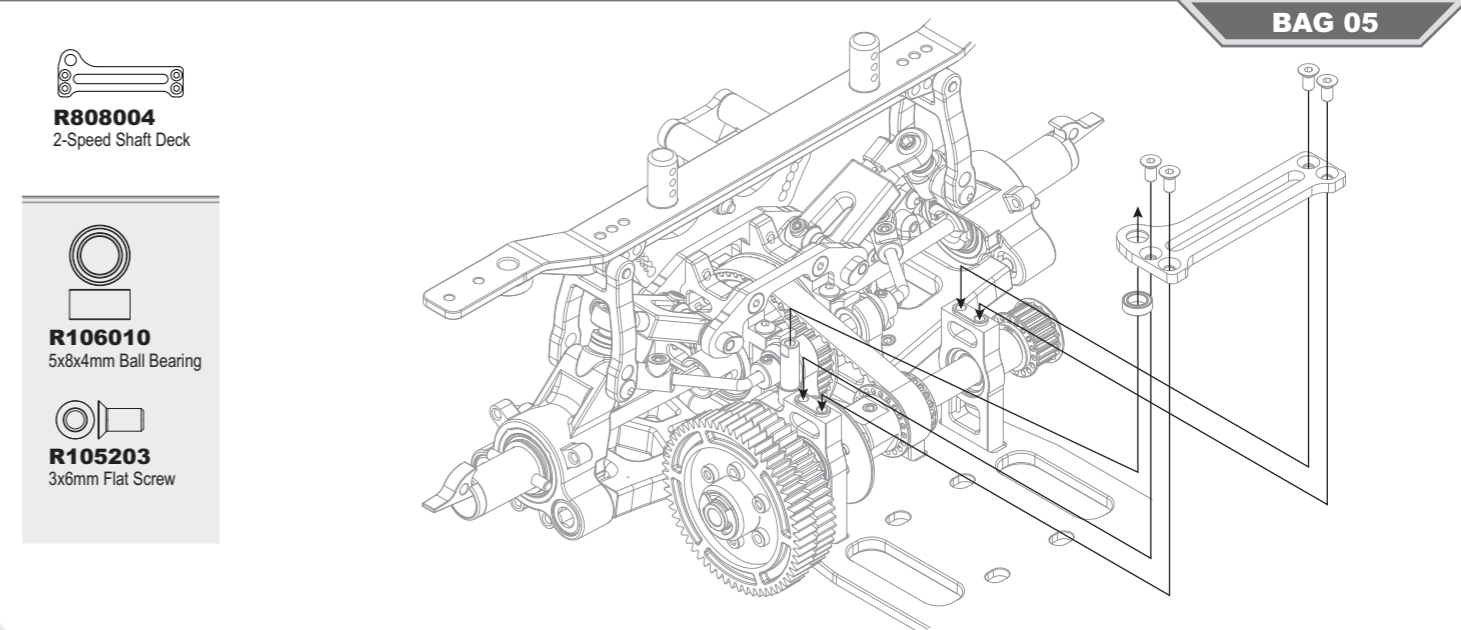
BAG 05



- R802054**
Brake Adaptor
- R801113**
Pulley Set-Rear
- R801112**
Pulley Set-Meddle
- R803008**
Brake Disk

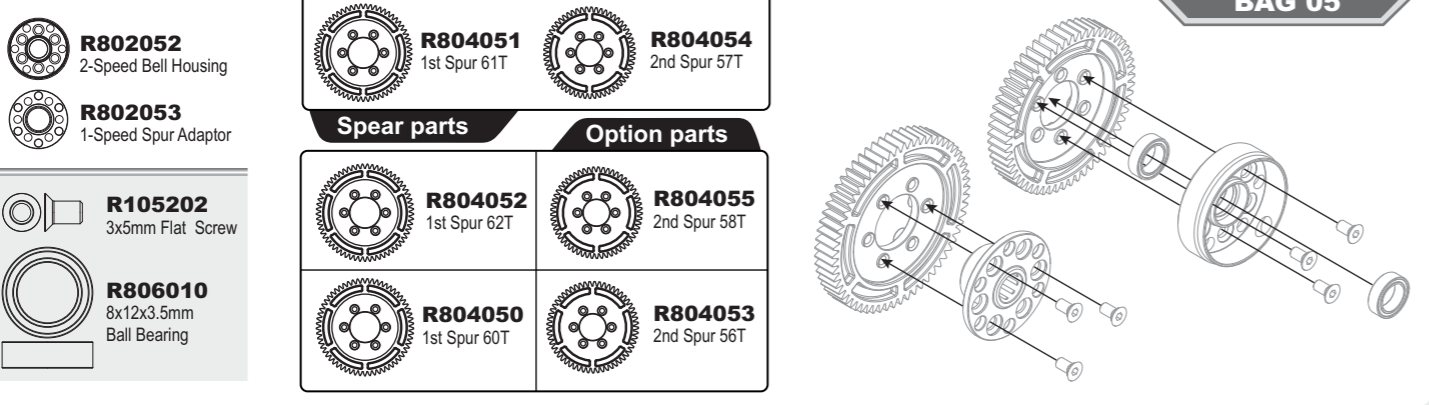
- R805050**
4x4mm Set
- R806110**
Ø3x10.8 Pin
- R105046**
E-Clip 7mm
- R105047**
E-Clip 9mm

BAG 05



- R808004**
2-Speed Shaft Deck
- R106010**
5x8x4mm Ball Bearing
- R105203**
3x6mm Flat Screw






BAG 05




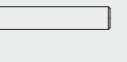
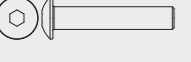


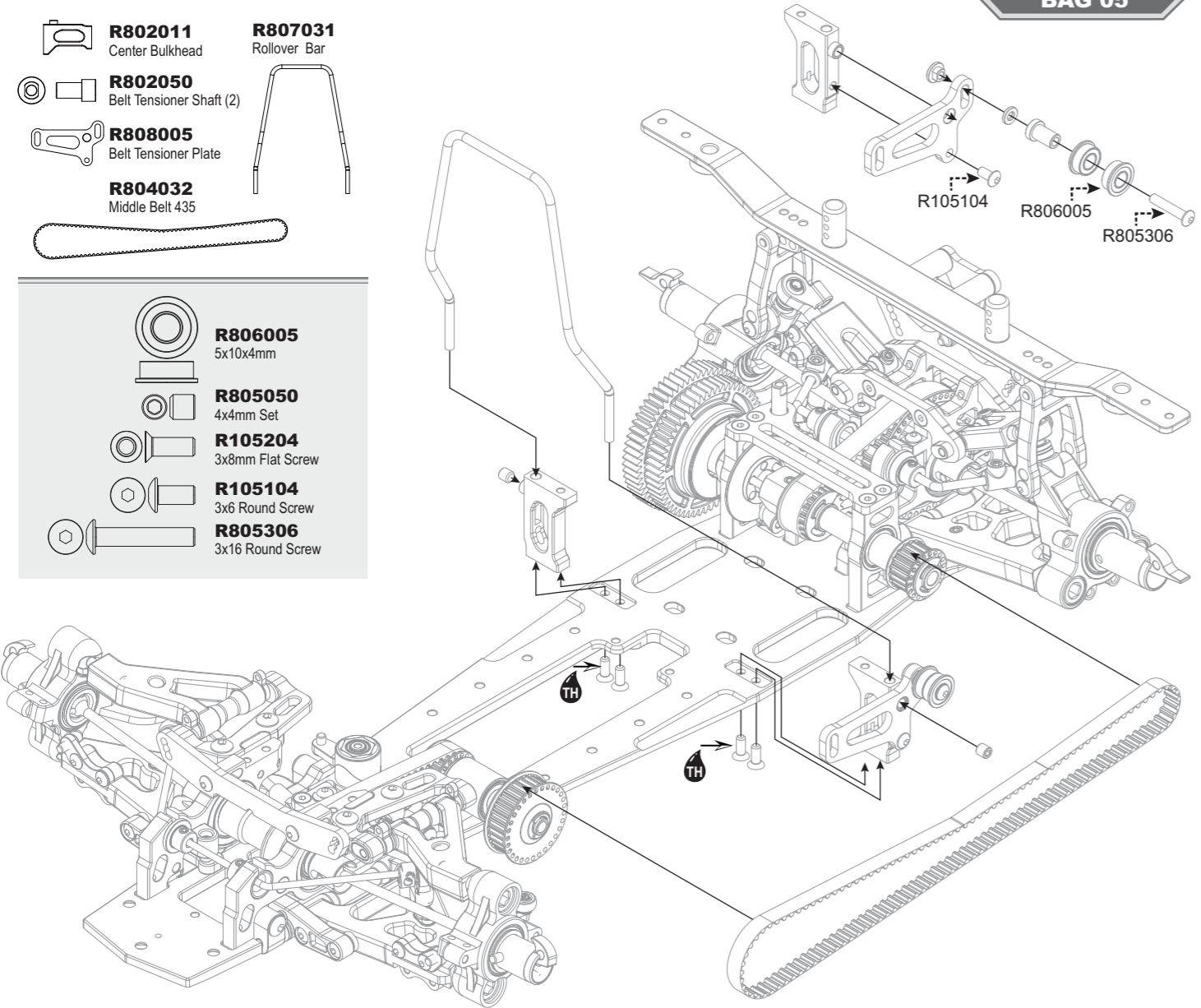
- R802052**
2-Speed Bell Housing
- R802053**
1-Speed Spur Adaptor
- R105202**
3x5mm Flat Screw
- R806010**
8x12x3.5mm Ball Bearing

Spear parts		Option parts	
R804051 1st Spur 61T	R804054 2nd Spur 57T	R804052 1st Spur 62T	R804055 2nd Spur 58T
R804050 1st Spur 60T	R804056 2nd Spur 56T		

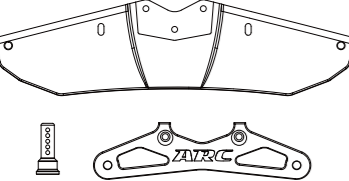
BAG 05




-  **R802011**
Center Bulkhead
-  **R807031**
Rollover Bar
-  **R802050**
Belt Tensioner Shaft (2)
-  **R808005**
Belt Tensioner Plate
-  **R804032**
Middle Belt 435

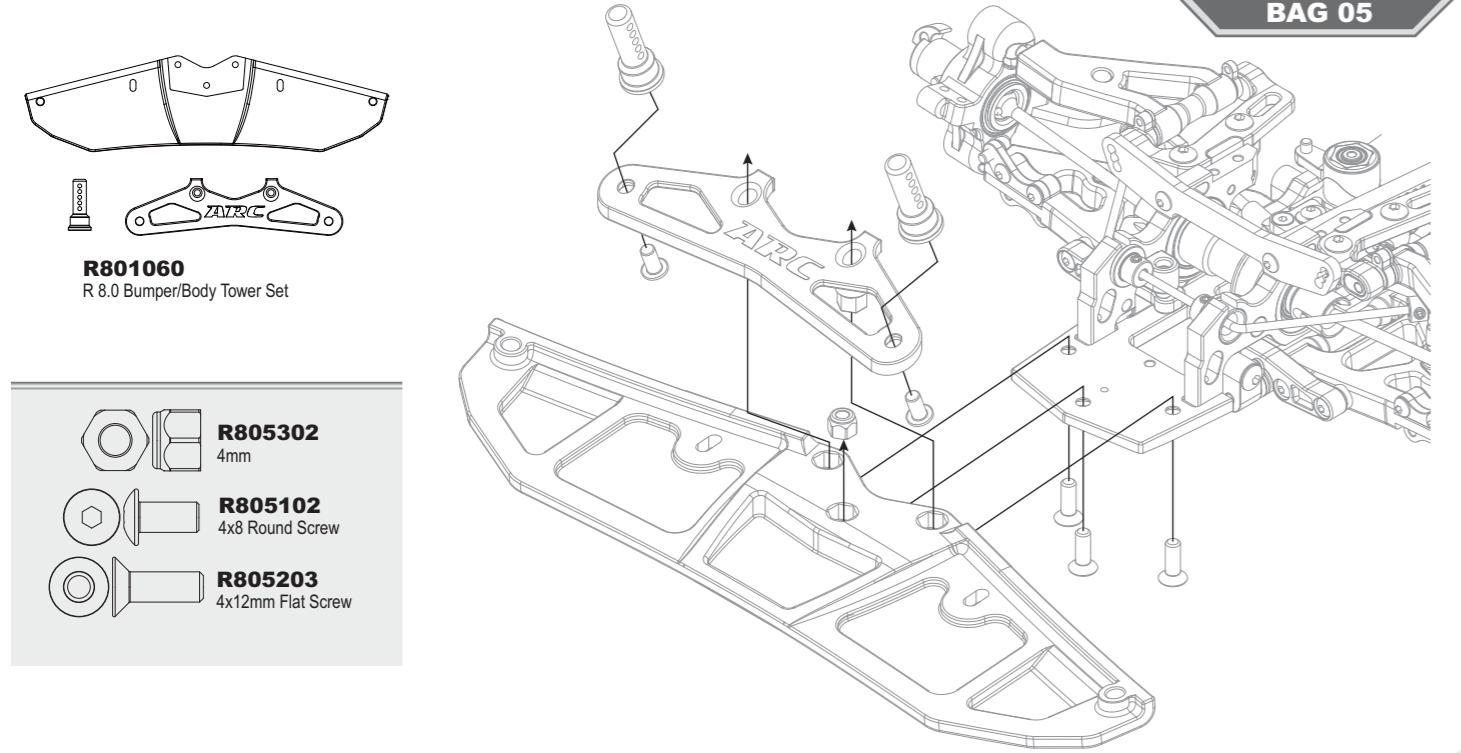
-  **R806005**
5x10x4mm
-  **R805050**
4x4mm Set
-  **R105204**
3x8mm Flat Screw
-  **R105104**
3x6 Round Screw
-  **R805306**
3x16 Round Screw














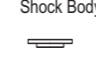
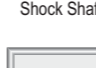
BAG 05

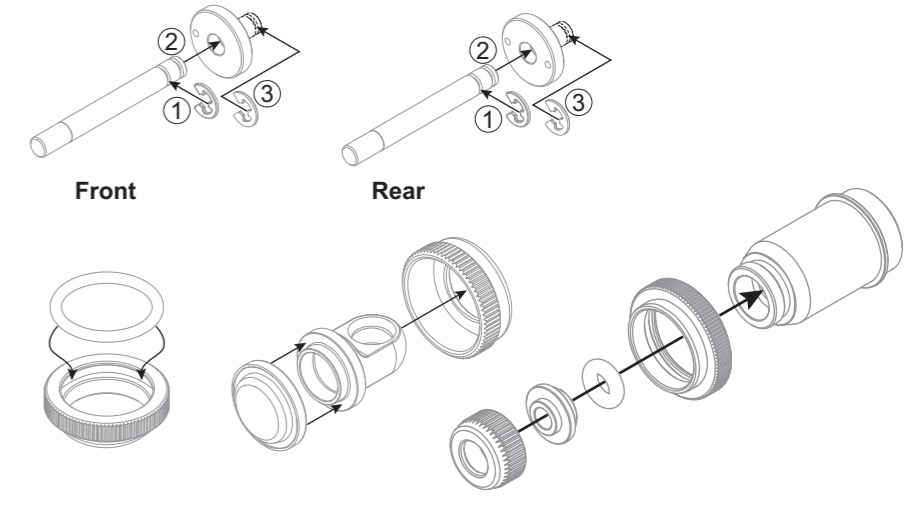
-  **R801060**
R 8.0 Bumper/Body Tower Set


-  **R805302**
4mm
-  **R805102**
4x8 Round Screw
-  **R805203**
4x12mm Flat Screw



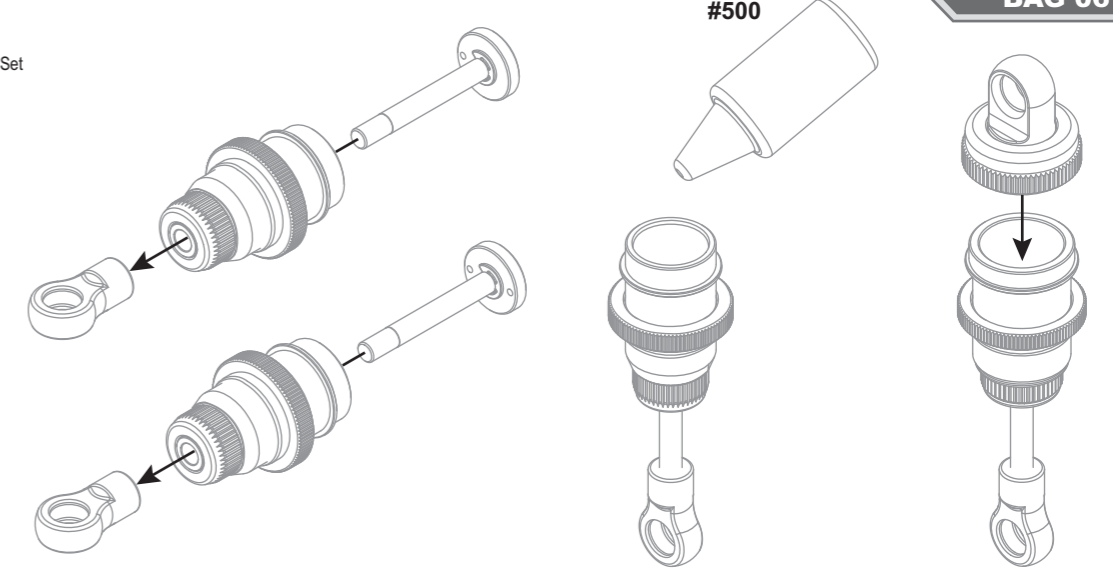
BAG 06

-  **R104021**
Shock Piston Big Bore Long 1.1mm x2
-  **R104022**
Shock Piston Big Bore Long 1.1mm x1
-  **R103013**
Shock Shaft (2)
-  **R102008**
Shock Cap Alu (2)
-  **R104013**
O'ring 13x1
-  **R101040**
Shock Ball Joint Set
-  **R102009**
Shock Low Cap Alu (2)
-  **R102010**
Shock ADJ Nut Alu (2)
-  **R104002**
O'ring 3x2
-  **R104007**
Shock Membrane
-  **R102068**
Shock Body Long
-  **R104015**
Shock Shaft Shim
-  **R105501**
E-Clip 2mm




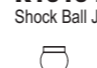

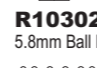

-  **R101040**
Shock Ball Joint Set

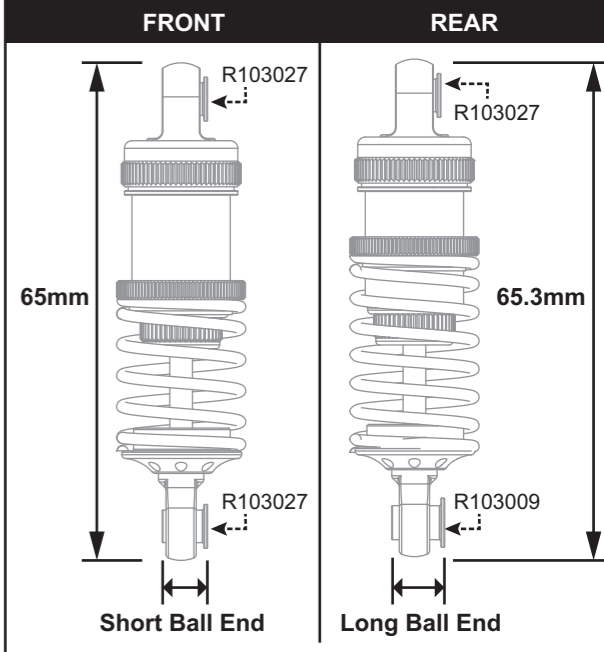
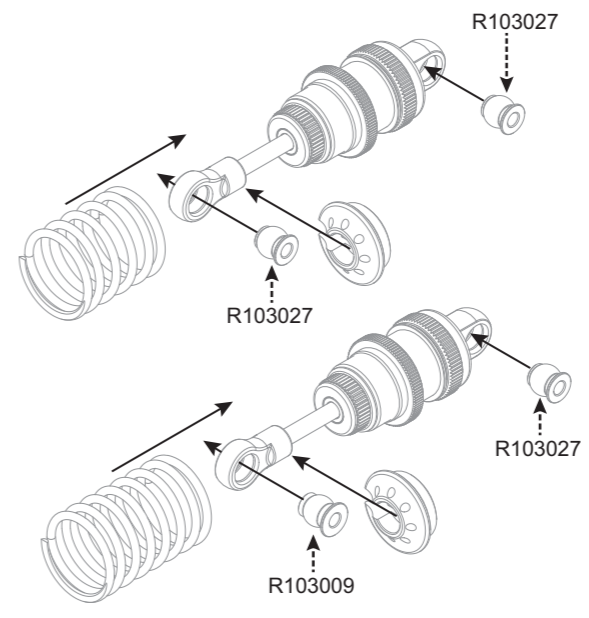
#500



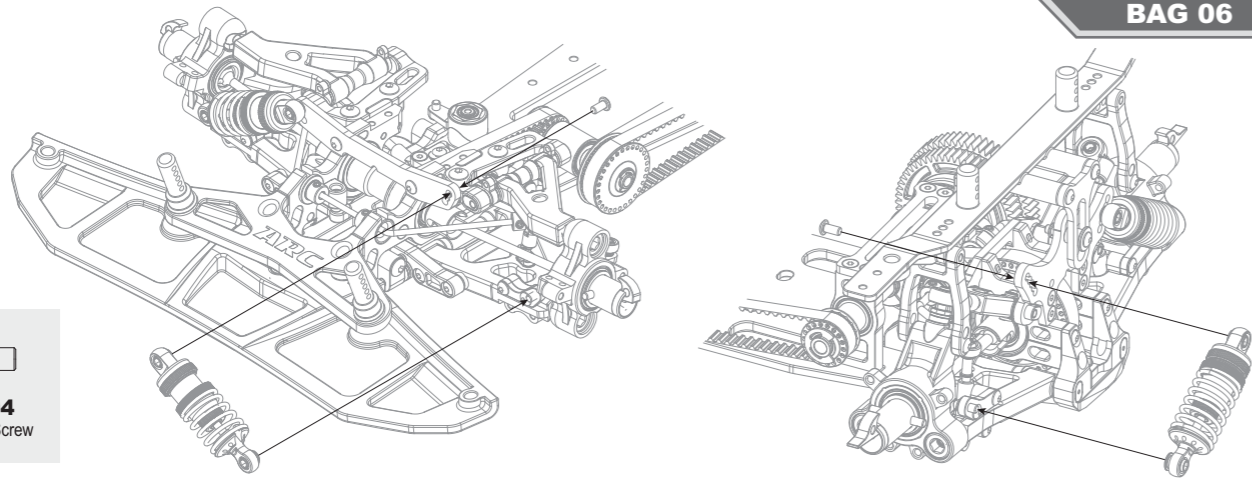
BAG 06

BAG 06

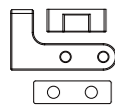
-  **R101040**
Shock Ball Joint Set
-  **R103009**
5.8mm Ball End (4)
-  **R103027**
5.8mm Ball End Short (4)
-  **R807051**
Shock Spring Front (Yellow)
-  **R807061**
Shock Spring Rear (Blue)



BAG 06

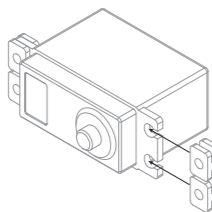


R105104
3x6 Round Screw

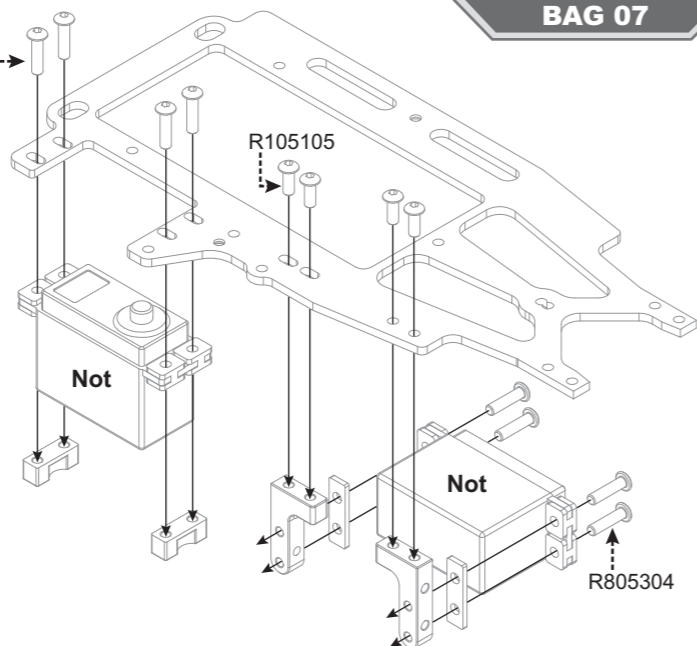


R801200
Servo Mount

R805304



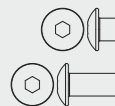
Servo Not Included



Not

Not

R805304

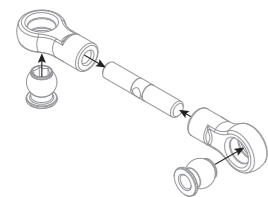
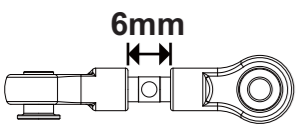


R105105
3x8 Round Screw



R805304
3x12 Round Screw

BAG 07



R801091
Ball End 4.9mm Short



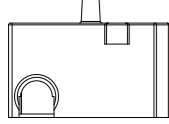
R803016
Ball Head 4.9mm



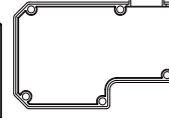
R803034
3mm X 15mm Turnbuckle



R101060
Servo Horn Dual Steering Arm



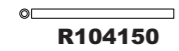
R801080
Radio Box



R801081
Radio Box



R804021
Rubber Grommet



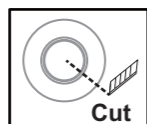
R104150
Antenna



R805305
2x8 Flat Screw

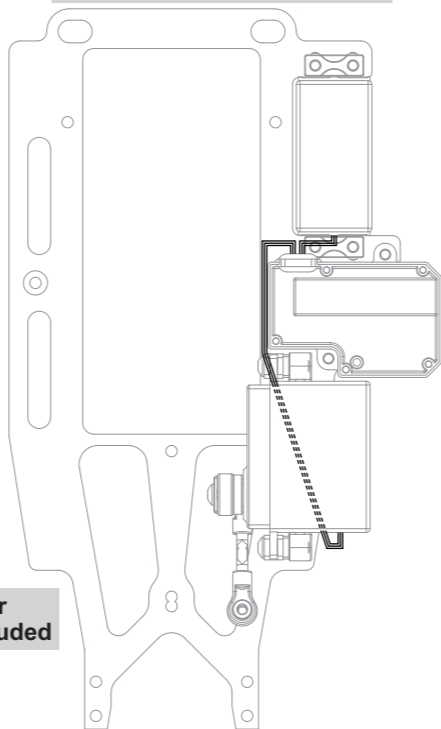


R105104
3x6 Round Screw



R804021
Cut

BAG 07
Suggested Servo wire layout



Receiver Not Included

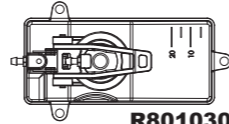
BAG 07



R104002
O-ring 3x2 (4)



R802051
Fuel Tank Mount (3)



R801030
Fuel Tank



R801109
Upper Deck Insert (2)



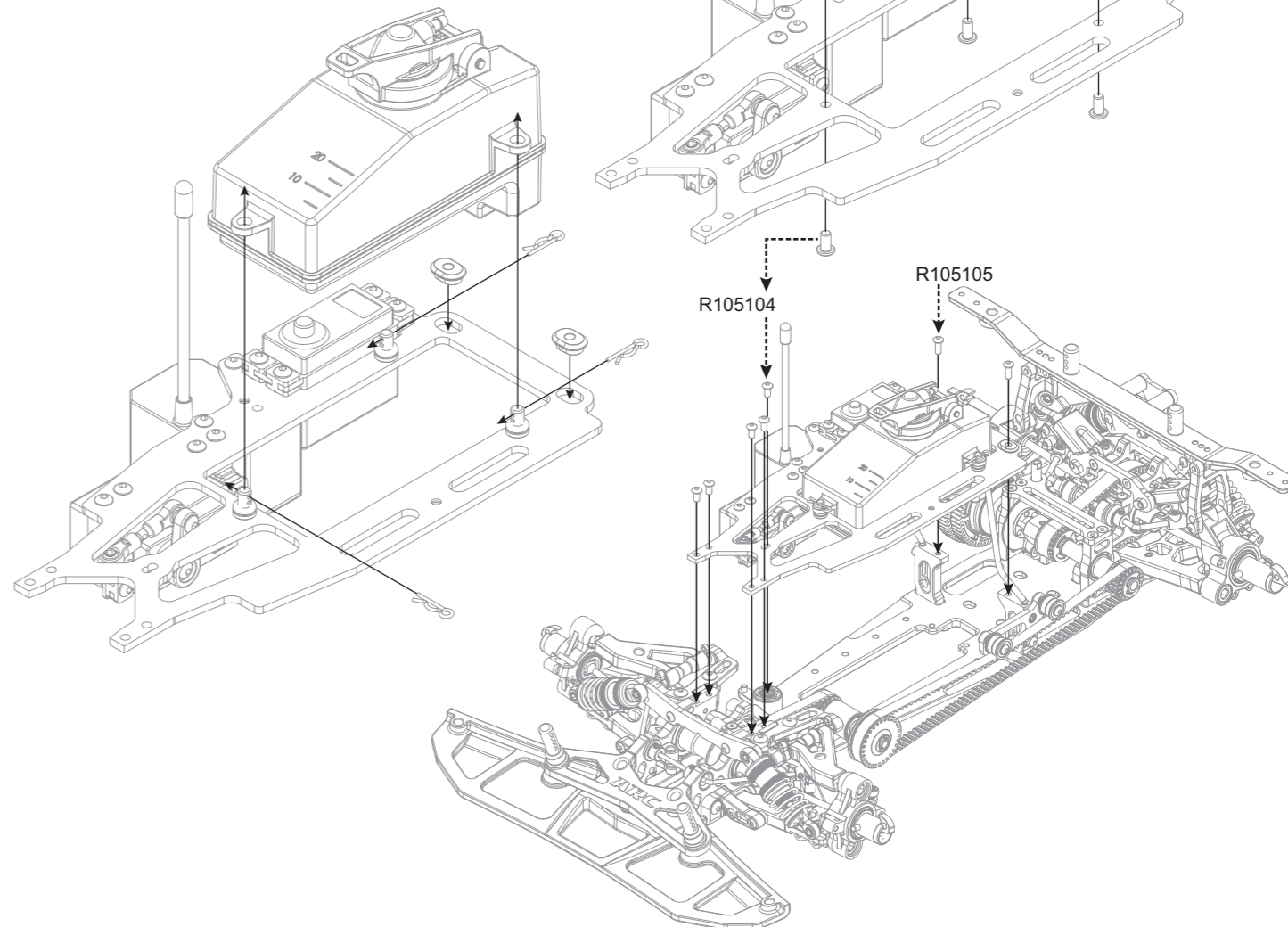
R807008
3mm R Clip (10)



R105104
3x6 Round Screw



R105105
3x8 Round Screw



R105104

R105105

BAG 07

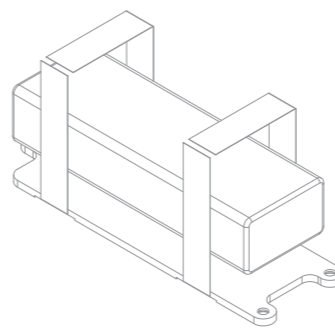


R808015
Battery Mount Carbon

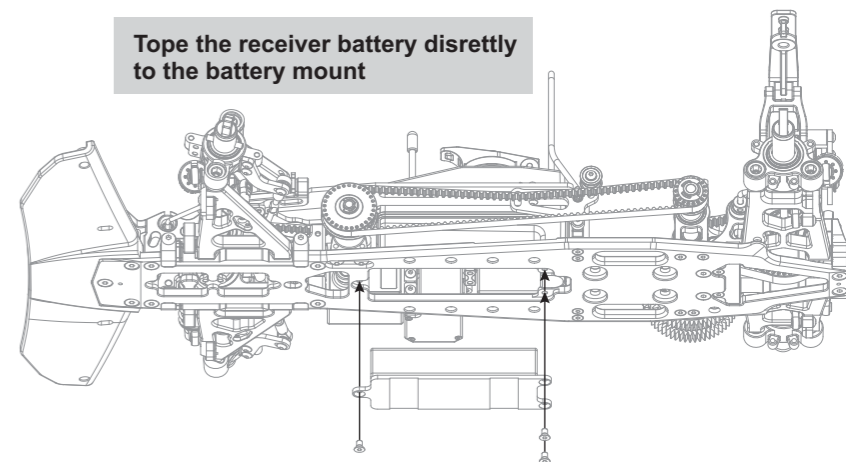


R105202
3x5mm Flat Screw




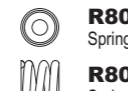




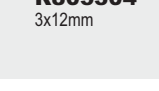
Top the receiver battery discreetly to the battery mount

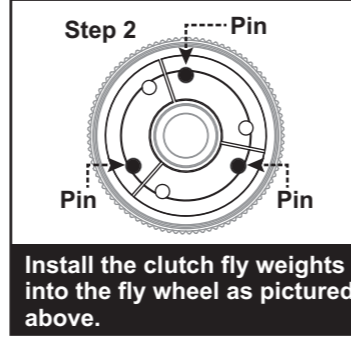
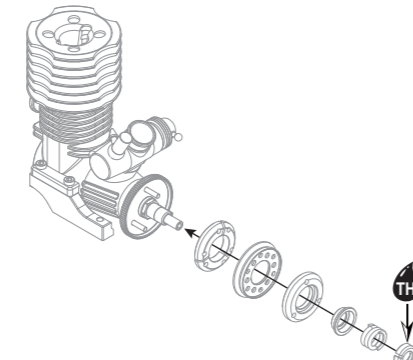
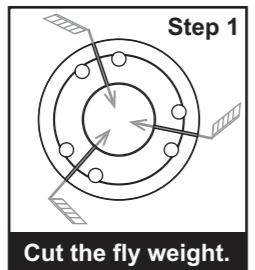
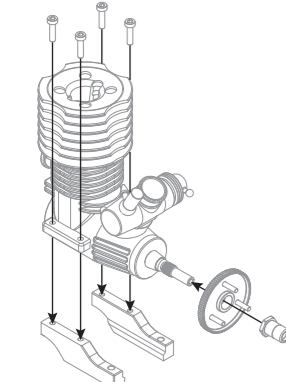


NiMH/Lipo Receiver Battery (Not Included)

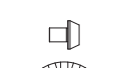

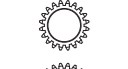



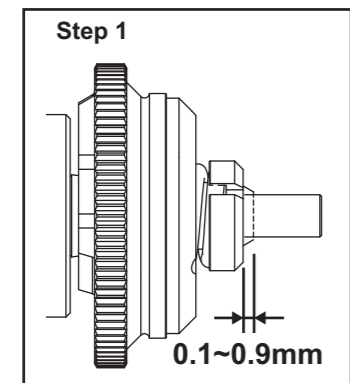
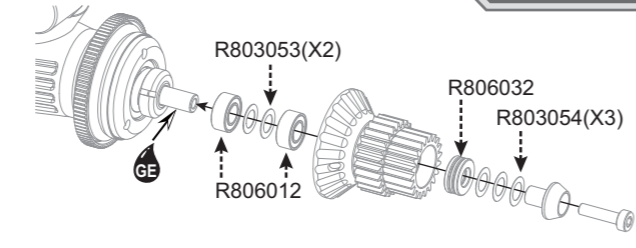
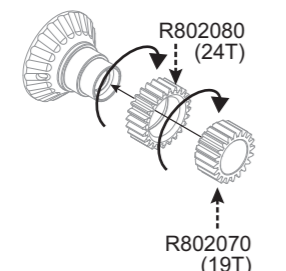
BAG 07

-  **R802012**
Engine Mount
-  **R802001**
Fly Wheel
-  **R804001**
Clutch Pad Yellow
-  **R802100**
Spring Base
-  **R805304**
3x12mm
-  **R803004**
Fly Wheel Nut
-  **R802002**
Clutch Pad Base
-  **R804002**
Clutch Fly Weight
-  **R807001**
Spring 2.0mm
-  **R803006**
Clutch Spring Nut

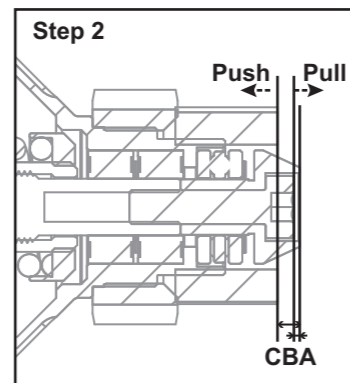


BAG 07

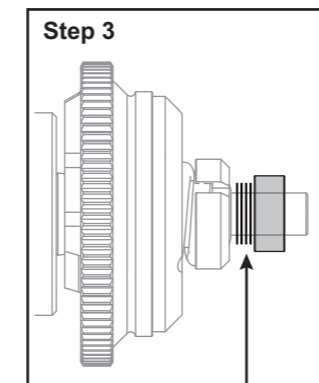
-  **R803002**
Clutch Bearing Nut
-  **R803003**
Clutch Bell
-  **R802070**
1st Gear Pinion 19T
-  **R802080**
2nd Gear Pinion 24T








Use 0.1mm to break-in the clutch pad bell, after break-in setup into 0.6mm~0.9mm during race.









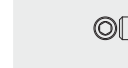
$(A \leftrightarrow C) - (A \leftrightarrow B) = 0.6 \sim 0.7 \text{MM}$
Adjust the Clutch Gap B-C by add / remove R803054 Shims and set the cleance of gap into 0.6mm.

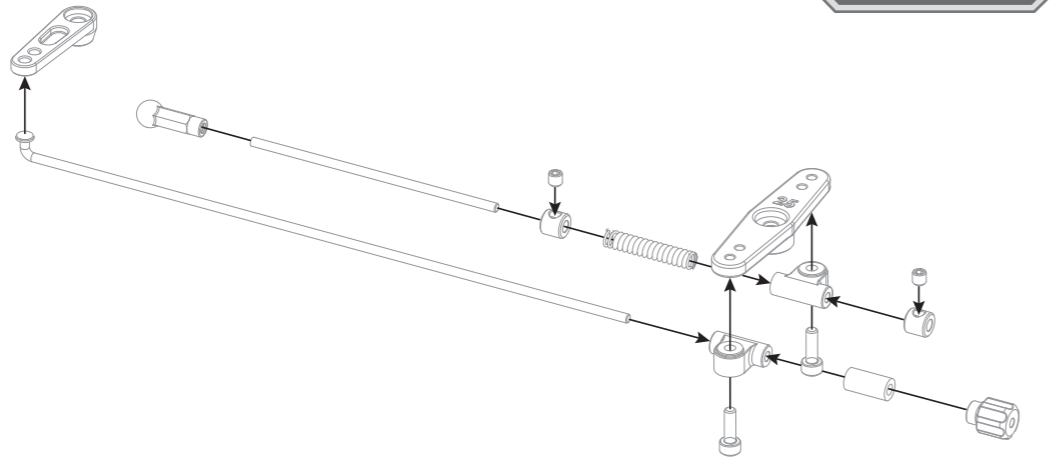


After step2 finished, add the distance shims (0.6mm~0.7mm) back to shaft to keep clutch bell not touch the pad.

-  **R806032**
5x8x4mm Thrust Bearing
-  **R106012**
5x10x4mm Ball Bearing
-  **R803053**
5x8x0.1mm
-  **R803054**
5x8x0.2mm
-  **R805304**
3x12mm

BAG 07



-  **R802057**
Break Lever
-  **R804035**
Fuel Tube
-  **R807006**
Throttle Linkage (2)
-  **R102006**
Collar Alu
-  **R801100**
Throttle Servo Horn Set
-  **R805300**
2.5x8mm
-  **R105401**
3x3mm Set

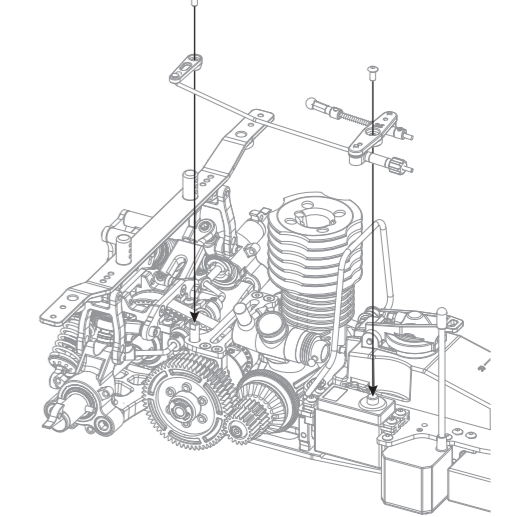
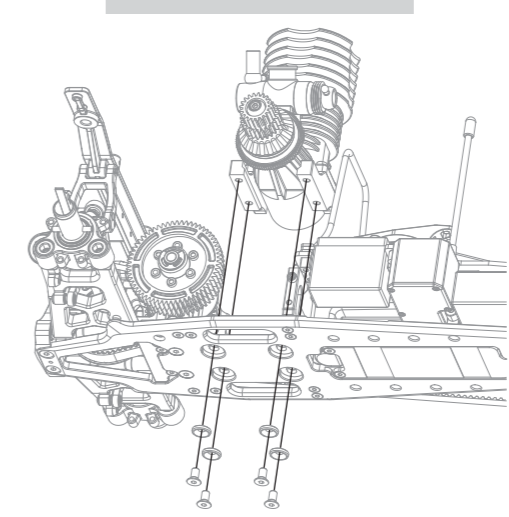


BAG 07


-  **R802035**
4mm Sink Shims Alu

Countersunk shims Alu.

-  **R805201**
4x8mm Flat Screw
-  **R105104**
3x6 Round Screw

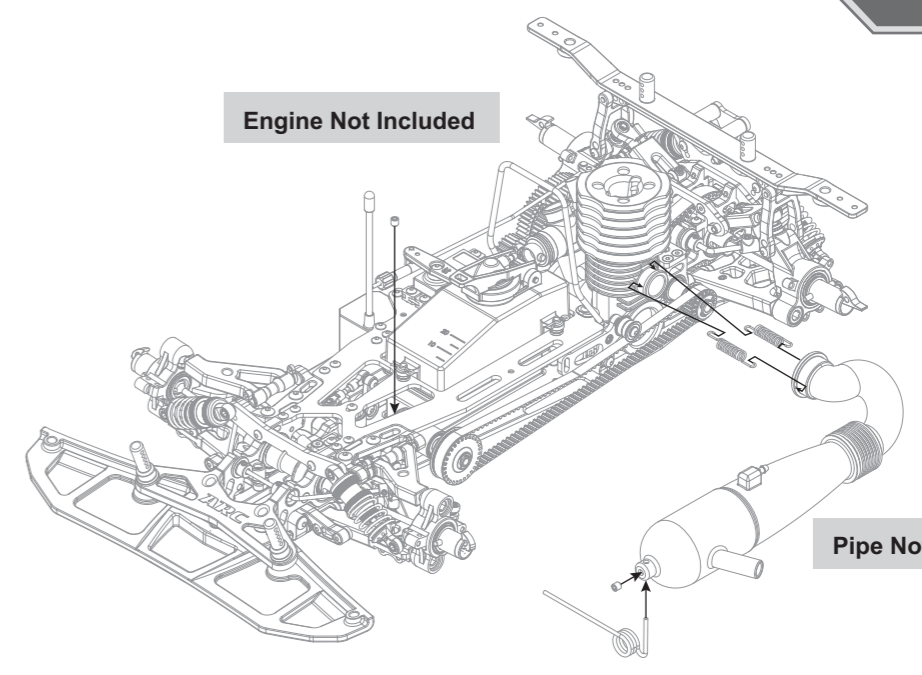


BAG 07

-  **R807033**
Exhaust Pipe Spring

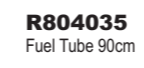
-  **R805050**
4x4mm

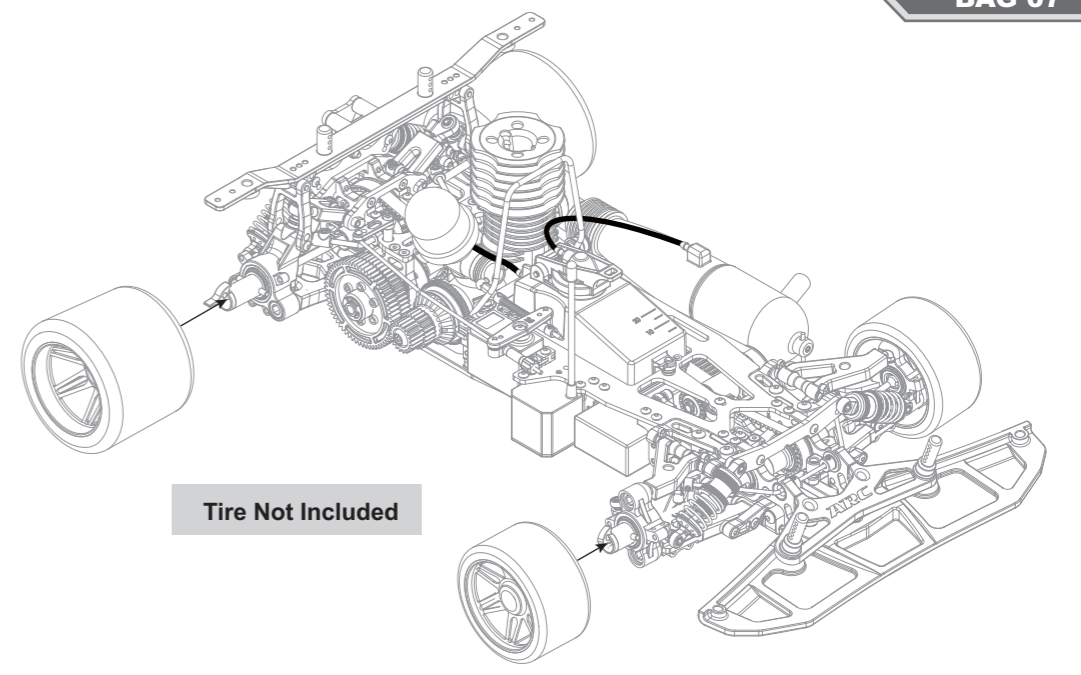
Engine Not Included



Pipe Not Included

BAG 07

-  **R804035**
Fuel Tube 90cm



Tire Not Included

RACE
 TRACK
 NAME
 CITY / COUNTRY
 DATE

TEMPERATURE AIR TRACK
 QUALIFYING POSITION BEST LAP TIME FINAL POSITION RACE LENGTH
 TRACK CONDITION TECHNICAL MIXED FAST
 TRACTION LOW MEDIUM HIGH

GEAR RATIO CHART

Spur	Spur 1st			Spur 2nd		
Pinion	60	61	62	56	57	58
1st 19T	<input type="checkbox"/>	<input checked="" type="checkbox"/>	<input type="checkbox"/>	5.37	5.46	5.56
2nd 24T	7.26	7.38	7.51	<input type="checkbox"/>	<input checked="" type="checkbox"/>	<input type="checkbox"/>

Front SHOCK Rear
 OIL 1 HOLE SHOCK PISTON 1 HOLE OIL
 500 CST 2 HOLE HOLE SIZE 2 HOLE 500 CST
 SPRING Yellow mm mm Blue

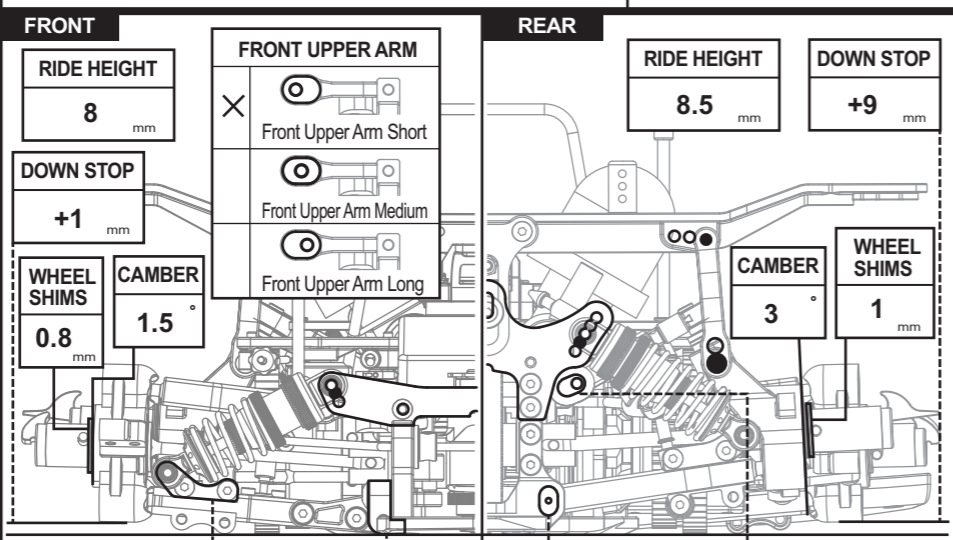
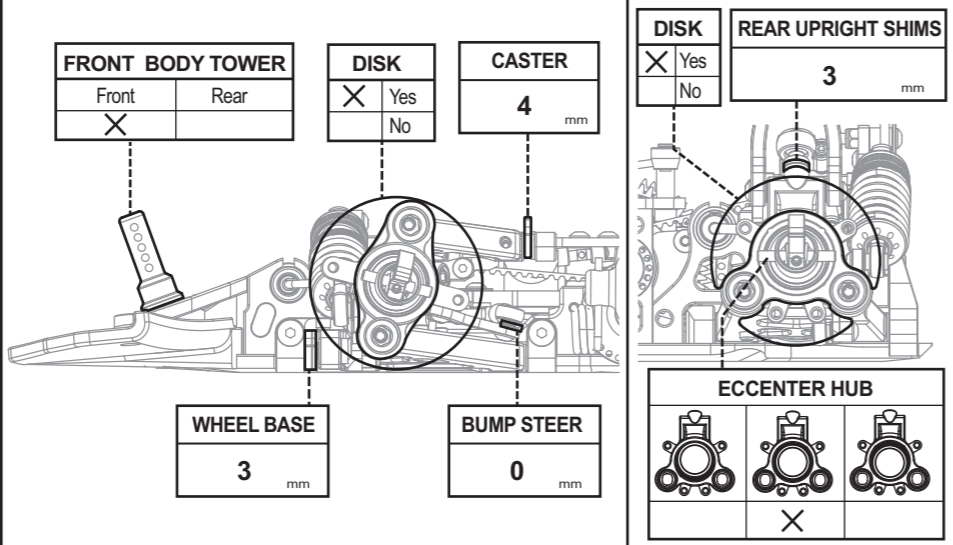
Front TIRE Rear
 Front Left 32° Tire Shore Rear Left 35°
 Front Right 32° Tire Shore Rear Right 35°
 Front Left 68 mm Tire Ø Rear Left 75 mm
 Front Right 68 mm Tire Ø Rear Right 75 mm
 Tire Additive

Bumper Standard Cut BODY MOUNT DISTANCE 26 mm
 BODY TS030 WING 6 mm

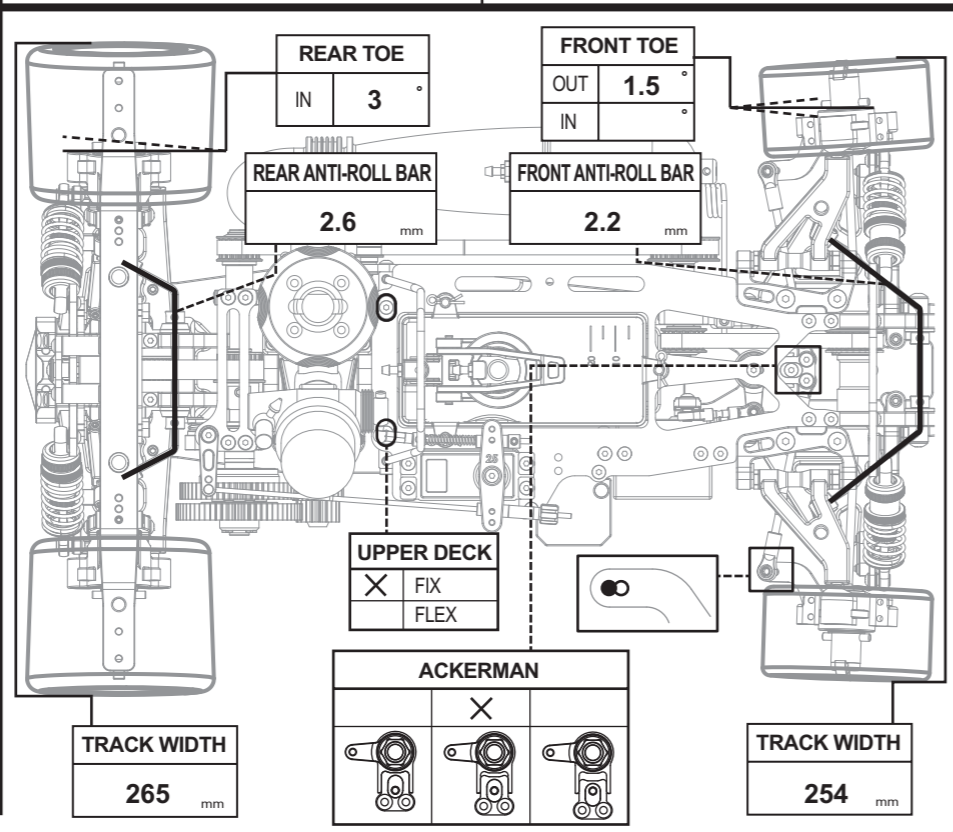
ENGINE
 Engine NOVA VIRTUS Pipe EFRA 2015
 Plug C8TGH Carb Dia 8.5 mm
 Fuel TORNANDO Head Shims 0.7 mm

CLUTCH
 Clutch Bell STEEL Clutch Shoes YELLOW
 Spring Load 0.8 mm Bell Clearance 0.6 mm

NOTE



LONG SHORT +0mm +2mm REAR ROLL CENTER REAR UPPER LINK
 R802042 R802041 R801021 R801022



RACE
 TRACK
 NAME
 CITY / COUNTRY
 DATE

TEMPERATURE AIR TRACK
 QUALIFYING POSITION BEST LAP TIME FINAL POSITION RACE LENGTH
 TRACK CONDITION TECHNICAL MIXED FAST
 TRACTION LOW MEDIUM HIGH

GEAR RATIO CHART

Spur	Spur 1st			Spur 2nd		
Pinion	60	61	62	56	57	58
1st 19T	<input type="checkbox"/>	<input type="checkbox"/>	<input type="checkbox"/>	5.37	5.46	5.56
2nd 24T	7.26	7.38	7.51	<input type="checkbox"/>	<input type="checkbox"/>	<input type="checkbox"/>

Front SHOCK Rear
 OIL 1 HOLE SHOCK PISTON 1 HOLE OIL
 CST 2 HOLE HOLE SIZE 2 HOLE CST
 SPRING mm mm

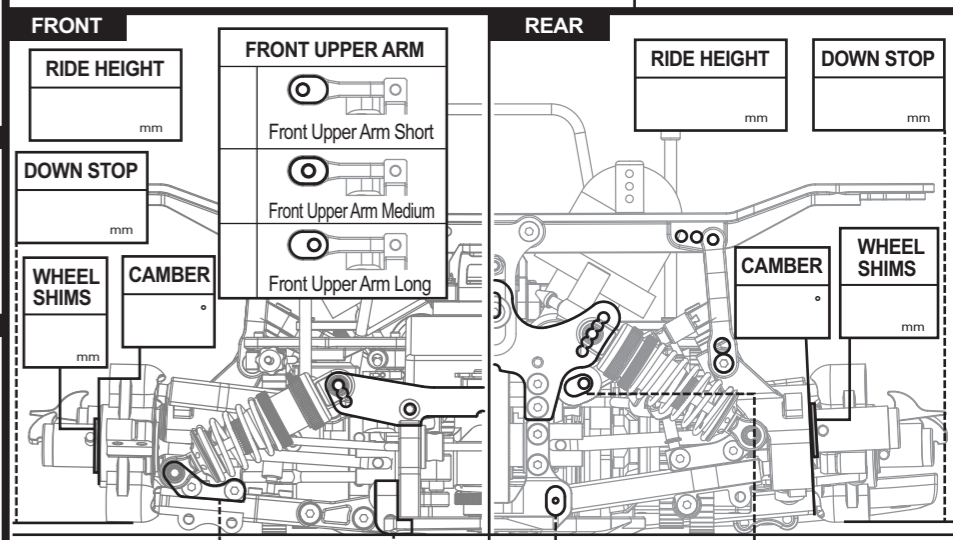
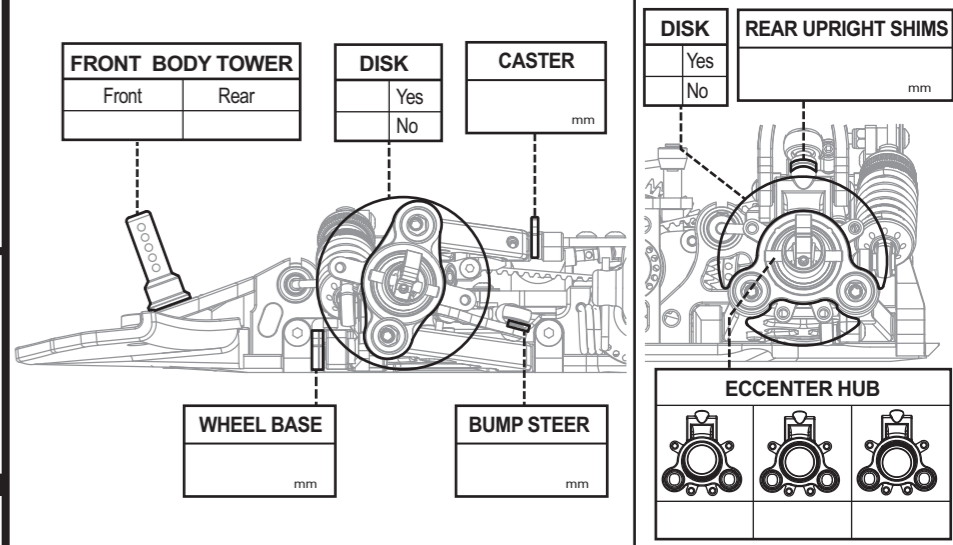
Front TIRE Rear
 Front Left ° Tire Shore Rear Left °
 Front Right ° Tire Shore Rear Right °
 Front Left mm Tire Ø Rear Left mm
 Front Right mm Tire Ø Rear Right mm
 Tire Additive

Bumper Standard Cut BODY MOUNT DISTANCE mm
 BODY WING mm

ENGINE
 Engine Pipe
 Plug Carb Dia mm
 Fuel Head Shims mm

CLUTCH
 Clutch Bell Clutch Shoes
 Spring Load mm Bell Clearance mm

NOTE



LONG SHORT +0mm +2mm REAR ROLL CENTER REAR UPPER LINK
 R802042 R802041 R801021 R801022

